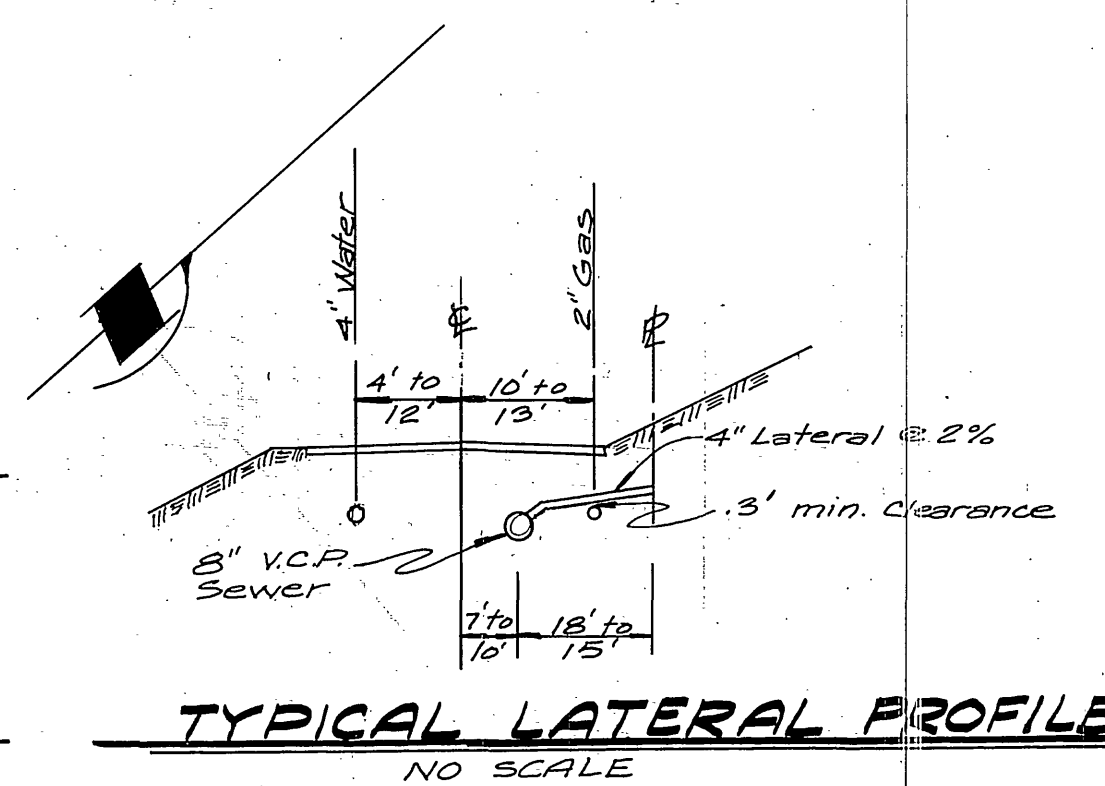
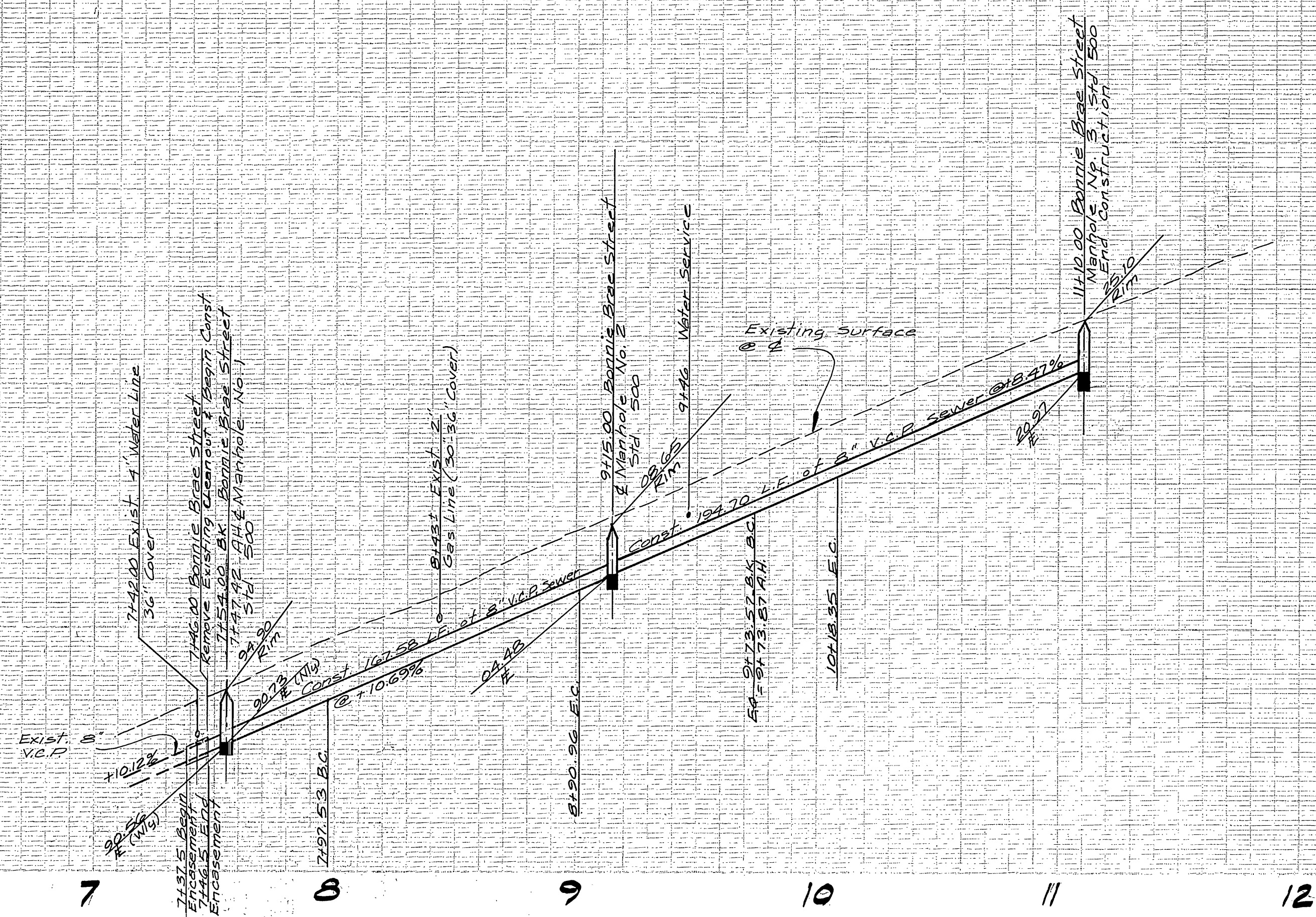


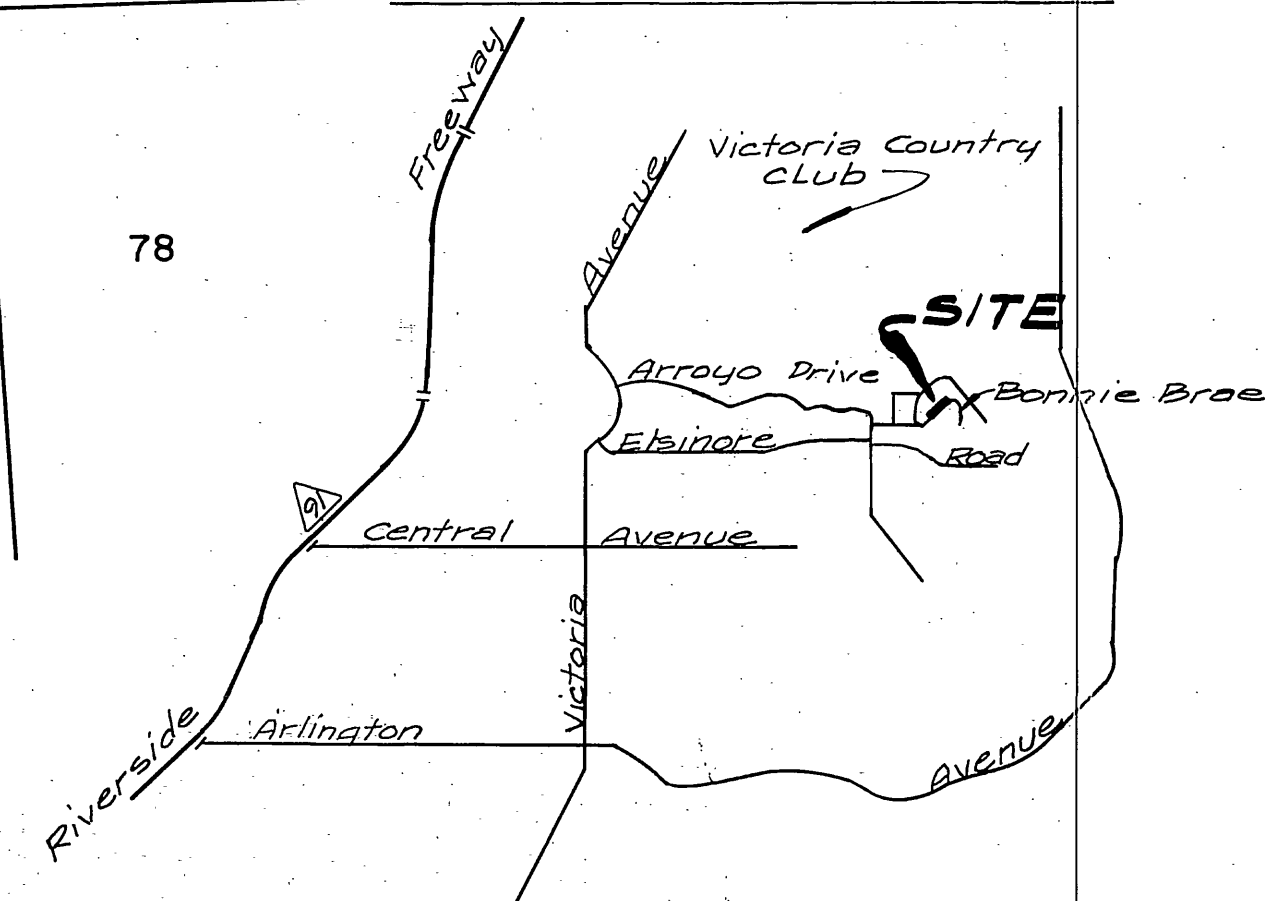
1040
1030
1020
1010
1000
990
980



GENERAL NOTES

1. The private engineer signing these plans is responsible for the accuracy and acceptability of the work hereon. In the event of discrepancies arising during construction, the private engineer signing these plans shall be responsible for determining an acceptable solution and revising the plans for approval by the City.
2. Construction shall be in accordance with the standard specifications for Public Works Construction 1976 Edition and per City of Riverside Standard Drawings.
3. It shall be the responsibility of the Contractor to clear the right of way in accordance with the provisions of law as it affects each utility, including irrigation lines and appurtenances, and at no cost to the City.
4. Location of Wyes and laterals to be determined in the field at the direction of the owner.
5. All Laterals to be constructed in accordance with standard Drawing No. 562, and extended to property line.
6. Manhole frames and covers to be set as noted in profile by the sewer contractor.
7. Prior to construction of the sewer, the Contractor is to expose the existing sewer line and verify location and elevation.
8. Plugs shall be installed and will remain in place where the new sewer connects with the existing sewer until such time as the new sewer is accepted by the City.

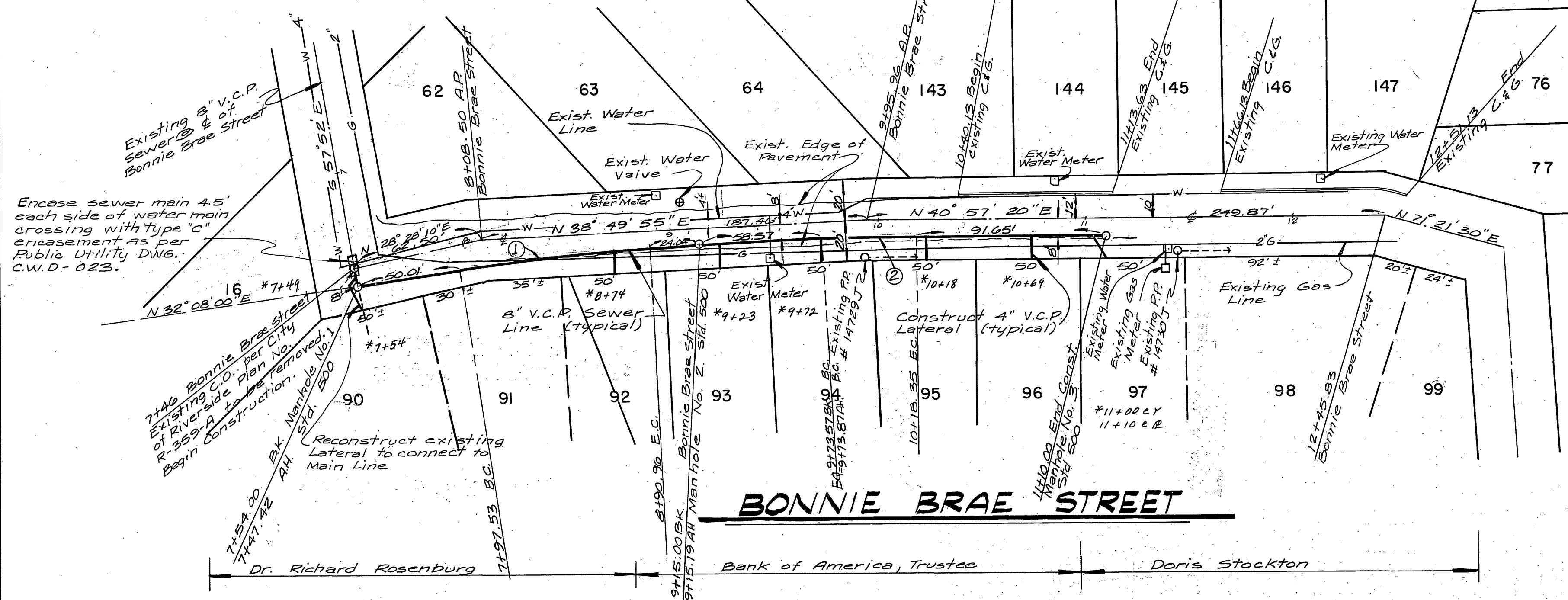
LOCATION MAP



NOTICE TO CONTRACTORS

The existence and location of underground utility pipes or structures shown on these plans were obtained by a search of the available records and located in the field. To the best of our knowledge there are no existing utilities except as shown on these plans.

The Contractor is required to take due precautionary measures to protect the utility lines shown and any other lines not of record or not shown on these plans.



CURVE DATA TABLE

No.	Δ	R	L	T
1	6° 41' 55"	800'	93.53'	46.82'
2	2° 07' 25"	1200'	44.48'	22.24'

CITY OF RIVERSIDE
DOMESTIC SYSTEM

BY: *Wally Hyler*
Chief Utilities Engineer - Water Date: 8-10-77

KICAK WAINSCOTT & ASSOCIATES
CIVIL ENGINEERS
GRAND TERRACE, CALIFORNIA
(714) 824-1775

APPROVED BY: *L.S. Waincott* DATE: 7-22-77

R.C.E. 16056

MARK REVISIONS APPR. DATE

DESIGNED BY: J.M. & W. DRAWN BY: J.M. CHECKED BY:

BENCH MARK:
Lead and Spk on top of curb
at North west corner
of Rincon and Arroyo
Drive, per City of Riverside
Map 359 A

Elevation: 973.72

CITY OF RIVERSIDE, CALIFORNIA
DEPARTMENT OF PUBLIC WORKS

APPROVED BY:
PRINCIPAL ENGINEER: *W.D. Vandeweyer*
TRAFFIC DIVISION
CHIEF P/W ENG.

DATE: 8/16/77

*AS BUILT 877 KET

INDEXED P.P.

SEWER PLAN AND PROFILE
BONNIE BRAE STREET

LOTS 90 THRU 98
VICTORIA PARK ADDITION

SHT. 1 OF 1

SCALE: HORIZ. 1" = 40' VERT. 1" = 8'

W.O. 043-01