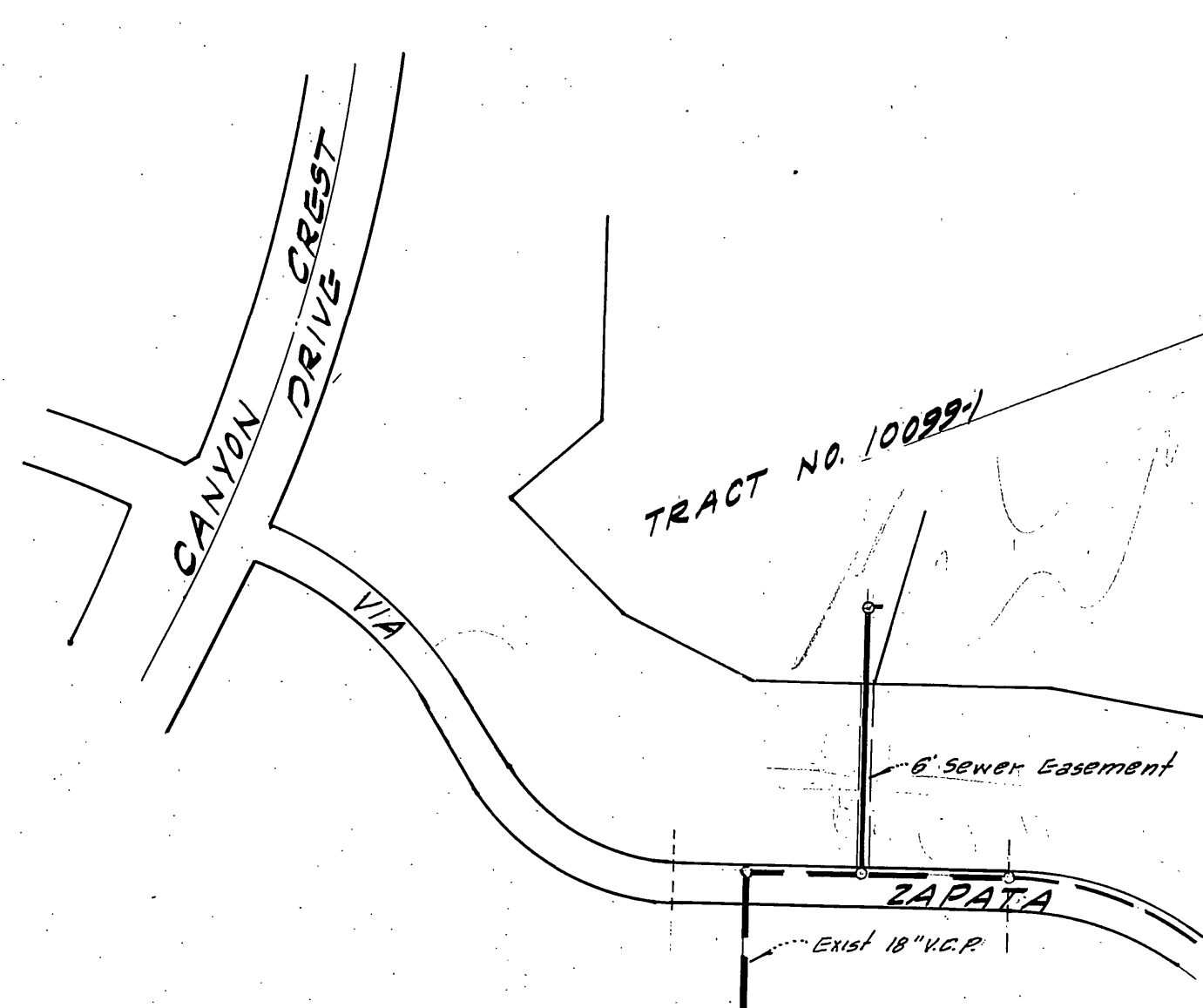


PLAN  
6" SEWER EASEMENT



VICINITY MAP

GENERAL NOTES:

- BENCH MARK: P.K. nail in center of leg, City of Riverside H-8-C in lamp post at Southwest corner of Central Ave. and Canyon Crest Drive City F.B. 868-40 Elev. 1103.51
- Location of Laterals to be determined in the field at the direction of the owner. Avoid conflict with proposed and or existing facilities.
- Construction shall be in accordance with the City of Riverside Department of Public Works, Standard Drawings, and the Standard Specifications for Public Works Construction, 1976 Edition.
- It shall be the responsibility of the Contractor to clear the Right of Way in accordance with the provisions of law as it affects each utility including irrigation lines and appurtenances, and at no extra cost to the City.
- Contractor is to verify existing sewer elevation prior to construction.
- It shall be the contractor's responsibility to familiarize himself with the jobsite and any underground facilities shown or not shown on these plans. The Engineer will not be responsible for any damage to underground facilities.
- A plug shall be installed and will remain in place where the new sewer connects with the existing sewer until the new sewer is accepted by the City.
- Quantities shown herein are for information only and the City of Riverside is not responsible for their accuracy.

QUANTITIES:

Std. No. 500 Manhole - 2 Each  
12" V.C.P. - 306 L.F.

ENGINEER'S NOTE:

The private engineer signing these plans is responsible for assuring the accuracy and acceptability of the work hereon. In event of discrepancies arising during construction as a result of errors or omissions the private engineer shall be responsible for determining an acceptable solution and revising the plans for approval by the City.

W.J. McKEEVER Inc. CIVIL ENGINEERING RIVERSIDE CALIFORNIA APPROVED BY <i>William J. McKeever</i> DATE 7-77 R.C.E. 22502	Moved M.H. No. 1, 2' west 7/2/77	CITY OF RIVERSIDE CALIFORNIA DEPARTMENT OF PUBLIC WORKS	SEWER PLAN & PROFILE TRACT NO. 10,099-1 SEWER EASEMENT FROM VIA ZAPATA TO 306' NORTH	PROJ. NO. S-1117 SHEET 1 OF 1 FILE NO.
	DESIGNED BY DRAWN BY CHECKED BY	APPROVED BY PRINCIPAL ENGINEER PARK DEPARTMENT TRAFFIC DIVISION CHIEF P.W. ENGINEER	BY DATE APPROVED BY DIRECTOR OF PUBLIC WORKS DATE 7/2/77	HORIZ. SCALE 1"=40' VERT. 1"=4'