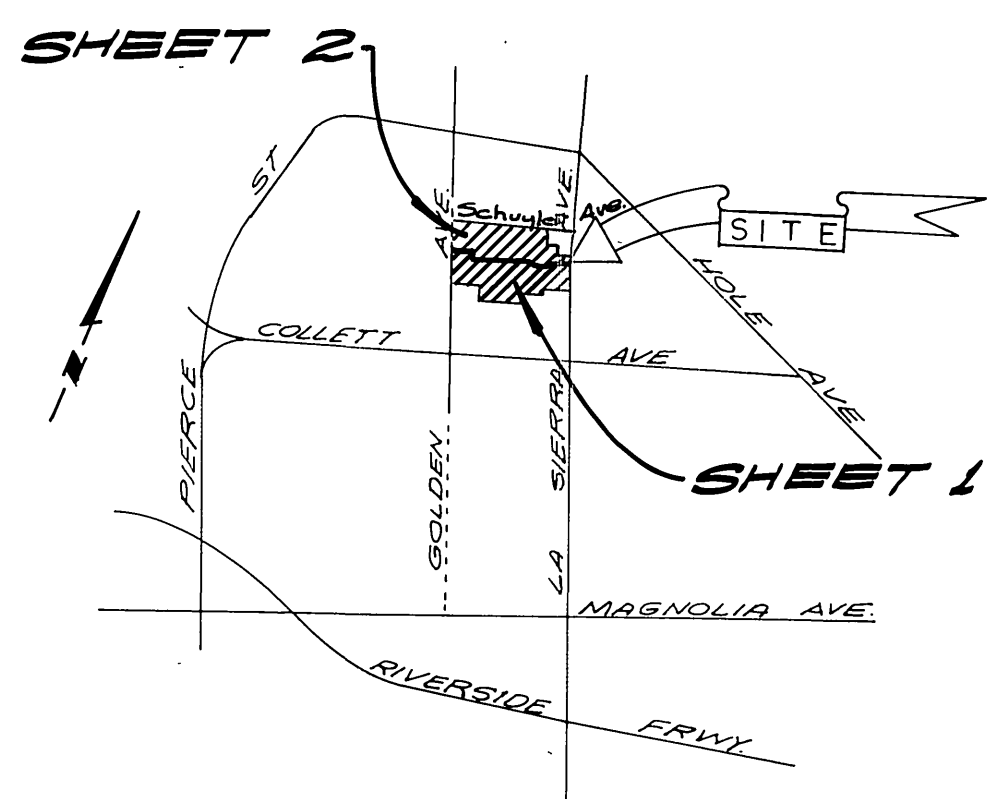


TRACT 6763-2

TRACT 6763-2

NOT A PART



LOCATION MAP
NO SCALE

INDEX MAP
NO SCALE

GENERAL NOTES

1. Construction shall be in accordance with Standard Specifications for Public Works Construction, 1976 Edition, and the City of Riverside Standard Drawings.
2. It shall be the responsibility of the Contractor to clear the right of way in accordance with the provisions of law as it affects each utility including irrigation lines and appurtenances and at no cost to the City.
3. Pipe shall be bedded per Case I, Standard Drawing No. 452, unless otherwise specified on plans.
4. Location of wyes and laterals to be determined at the direction of the owner.
5. All stubs and Laterals to be constructed in accordance with Standard Drawing No. 552, stubs to be plugged and capped, unless otherwise specified on plans.
6. The Sewer Contractor shall adjust Manholes to final grade after paving is completed.
7. Laterals are to be 4" and extended to property line.
8. Prior to construction of sewer, contractor is to expose existing sewer and contact the Engineer for verification of existing location and elevation.
9. A plug shall be installed and will remain in place where the new sewer connects with the existing sewer until the new sewer is accepted by the City.
10. The private engineer signing these plans is responsible for the accuracy and acceptability of the work shown. In the event of discrepancies arising during construction, the private engineer shall be responsible for determining an acceptable solution and revising the plans for approval by the City.

NOTICE TO CONTRACTOR

The existence and location of underground utility pipes or structures shown on these plans are obtained by a search of the available records. To the best of our knowledge, there are no existing utilities except as shown on these plans.

The Contractor is required to take due precautionary measures to protect the utilities lines shown and other lines not of record or not shown on these plans.

BENCH MARK
RR spike in power pole No. 24580 at Southwest corner of La Sierra Avenue and Collett Ave. City of Riv. R.B. 01815.
ELEVATION: 704.25

ALBERT A. WEBB ASSOCIATES
CIVIL ENGINEERS
RIVERSIDE, CALIFORNIA
APPROVED BY: *[Signature]* DATE: 4/13/77
R.E. No. 2072
W.O. 76-103 FOR: Pacesetter Homes Inc. F.B. 1032

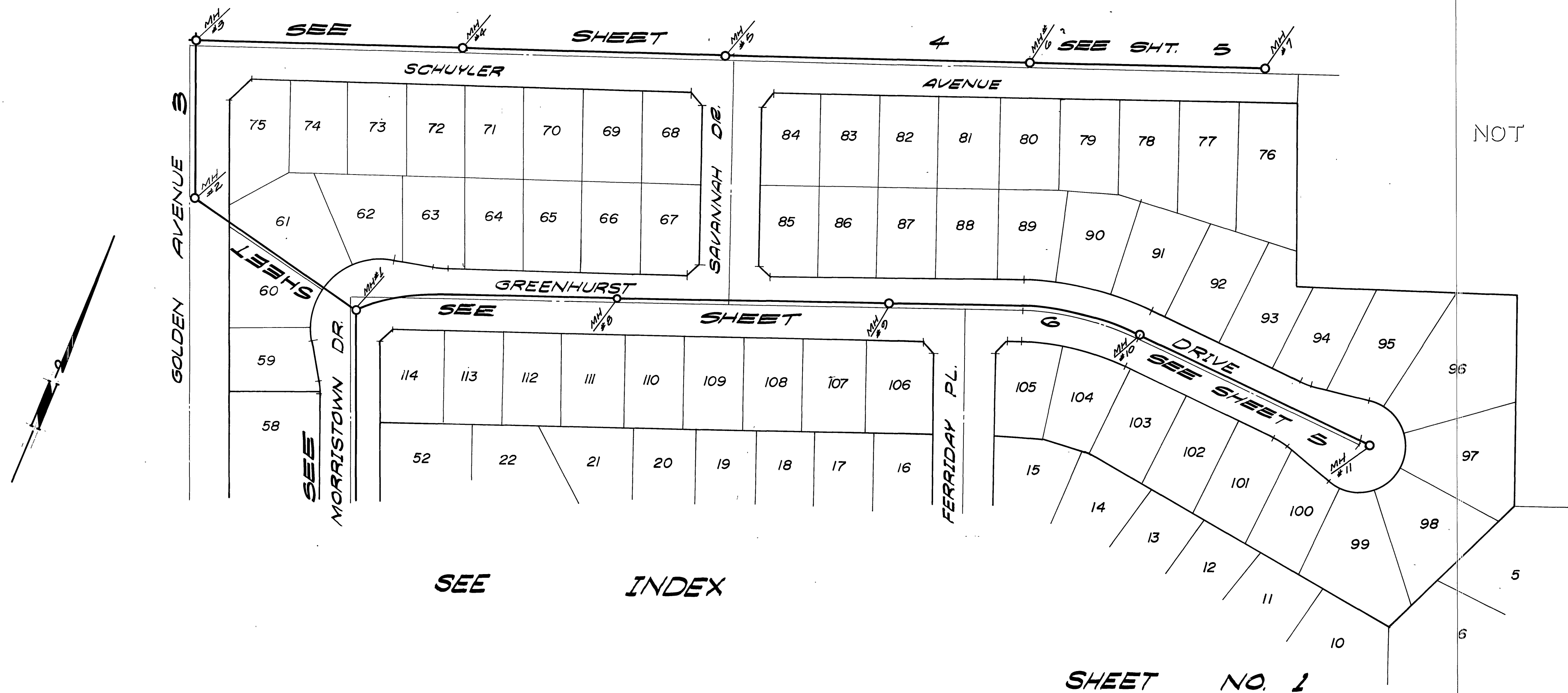
MARK	REVISIONS	APPR.	DATE

City of Riverside
Domestic System
By: *[Signature]* 5/11/77
Chief Utilities Engineer - Water Dept

CITY OF RIVERSIDE, CALIFORNIA
PUBLIC WORKS DEPARTMENT
APPROVED BY: *[Signature]* DATE: 4/13/77
PRINCIPAL ENGINEER
PARK DEPARTMENT
TRAFFIC DIVISION
CHIEF PUB. WKS. ENGR.

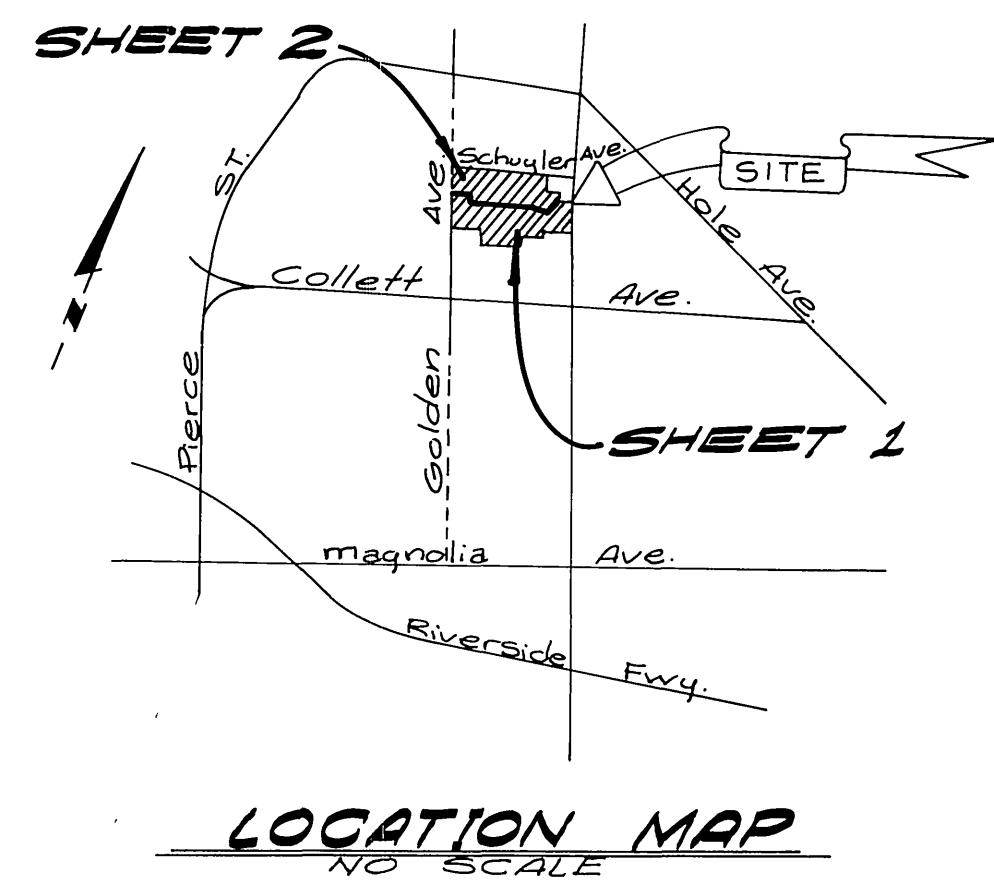
SEWER PLAN AND PROFILE
TRACT 6763
INDEX MAP
(SHT 1 of 2 SHTS)
SCALE: As Shown

ACCOUNT No.
DRAWING NUMBER
5-1121
SHEET 1 OF 2
76-103-B



NOT
A
PART

NOTE: SEE SHEET 1 FOR
GENERAL NOTES



ALBERT A. WEBB ASSOCIATES
CIVIL ENGINEERS
RIVERSIDE, CALIFORNIA
APPROVED BY: *[Signature]* DATE: 4/17/77
R.E. No. 9876

MARK	REVISIONS	APPR.	DATE

City of Riverside
Domestic System
By: *[Signature]* DATE: 5-11-77
Chief Utilities Engineer - Water

CITY OF RIVERSIDE, CALIFORNIA
PUBLIC WORKS DEPARTMENT

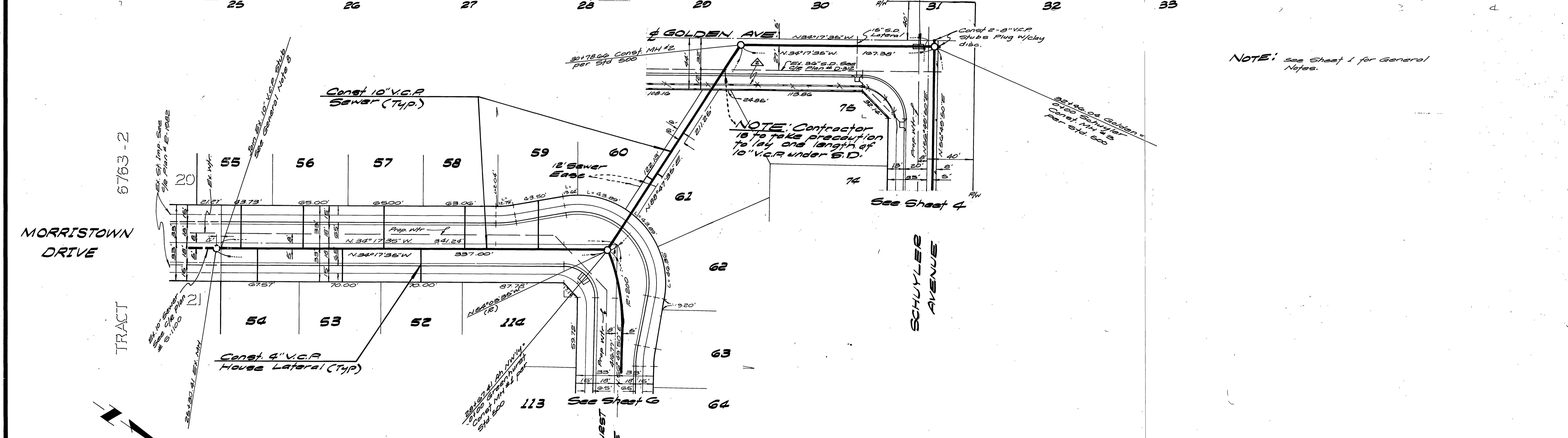
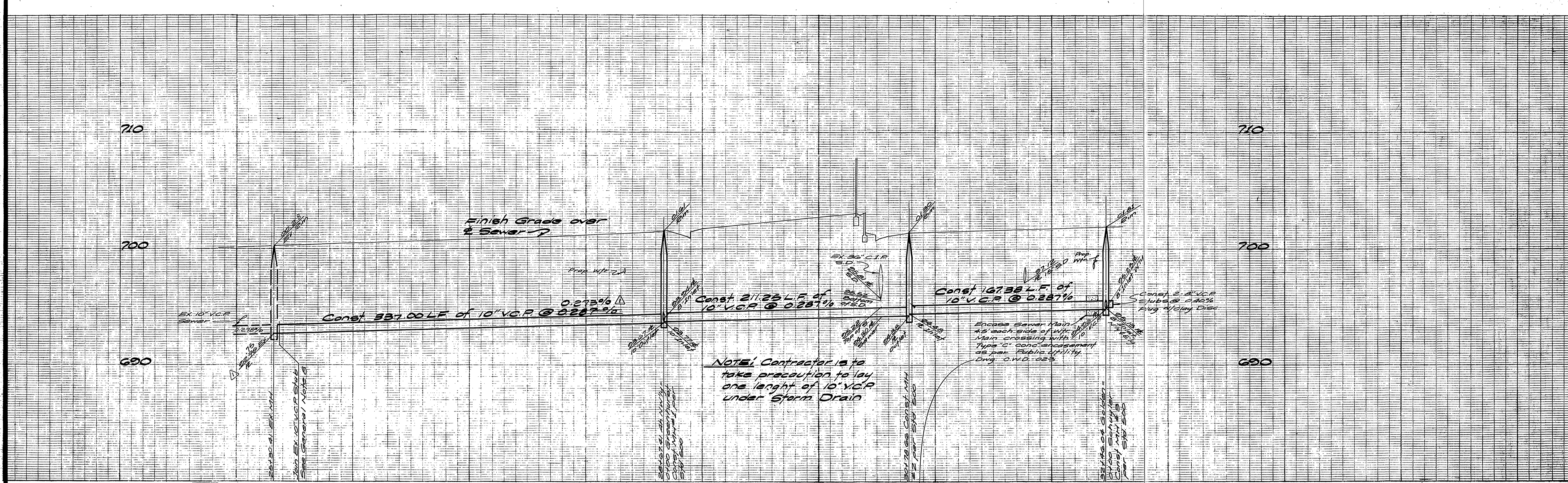
APPROVED BY: *[Signature]* DATE: 8/16/77
DIRECTOR OF PUBLIC WORKS

SEWER PLAN AND PROFILE

TRACT 6763
INDEX MAP
(SHT. 2 of 2)

SCALE: As Shown

ACCOUNT No.
DRAWING NUMBER
5-1121
SHEET 2 OF 2
76-109-B



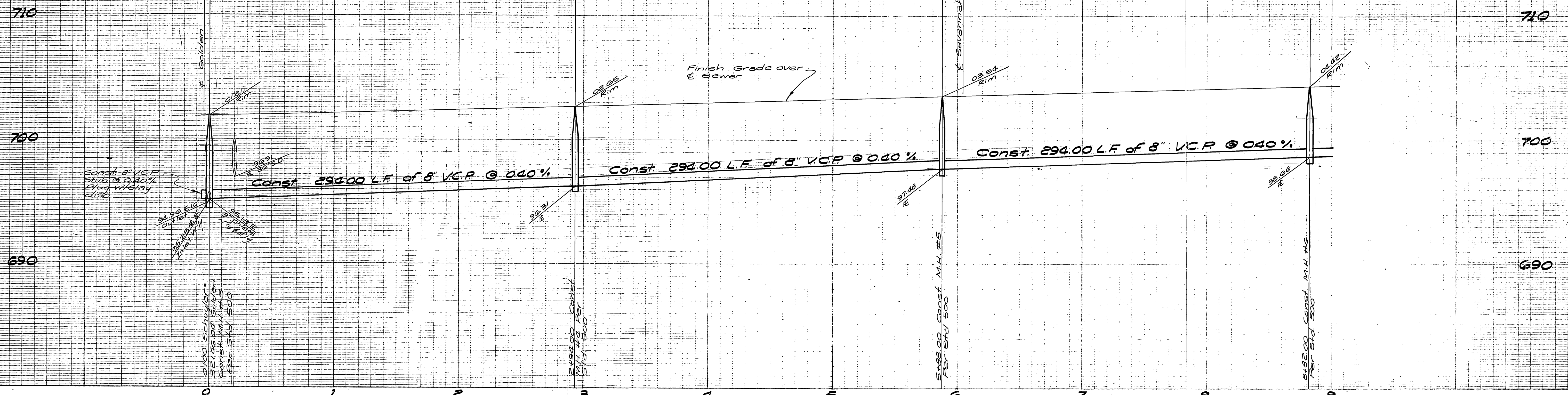
NOTE: See Sheet 1 for General Notes.

NOTE: Contractor is to take precaution to lay one length of 10" V.C.P. under S.D.

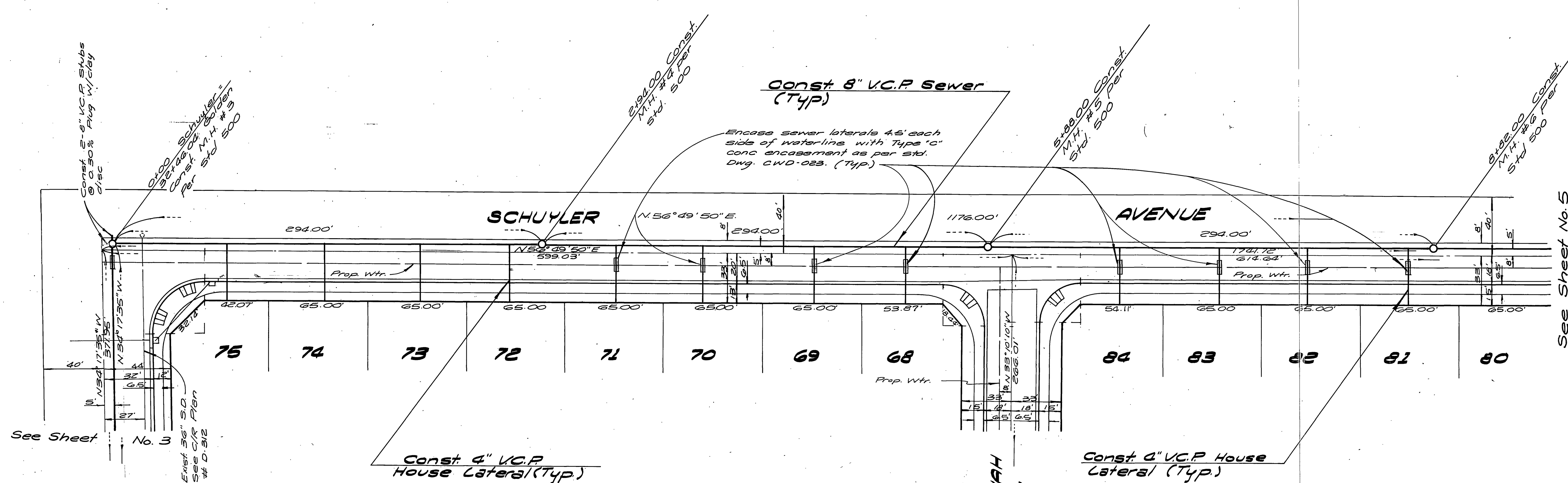
Setback of Golden Ave. 10' from 5th St. 500

BENCH MARK:
RR Spike in power pole No. 24599-1 at Southeast corner of La Sierra Ave. and Collier Ave. C.R. F.B. 376's Elev. 704.25

ALBERT A. WEBB ASSOCIATES CIVIL ENGINEERS RIVERSIDE, CALIFORNIA APPROVED BY: <i>[Signature]</i> DATE: 4/13/77 R.E. No. 0872		CITY OF RIVERSIDE, CALIFORNIA PUBLIC WORKS DEPARTMENT APPROVED BY: <i>[Signature]</i> DATE: 8/16/77 DIRECTOR OF PUBLIC WORKS		ACCOUNT No. -DRAWING NUMBER 5-1121 SHEET 3 OF 2 76-109-B
W.O. 76-109 FOR: Pacesetter Homes F.B. 1052		DESIGNED BY: <i>[Signature]</i> DRAWN BY: <i>[Signature]</i> CHECKED BY:		SCALE: Horiz: 1"=40' Vert: 1"=4' REVISIONS: DELETED SLOUGH WALL, GOLDEN Revised grades to meet at 5'



NOTE:
See Sheet No. 1 for General and Construction Notes



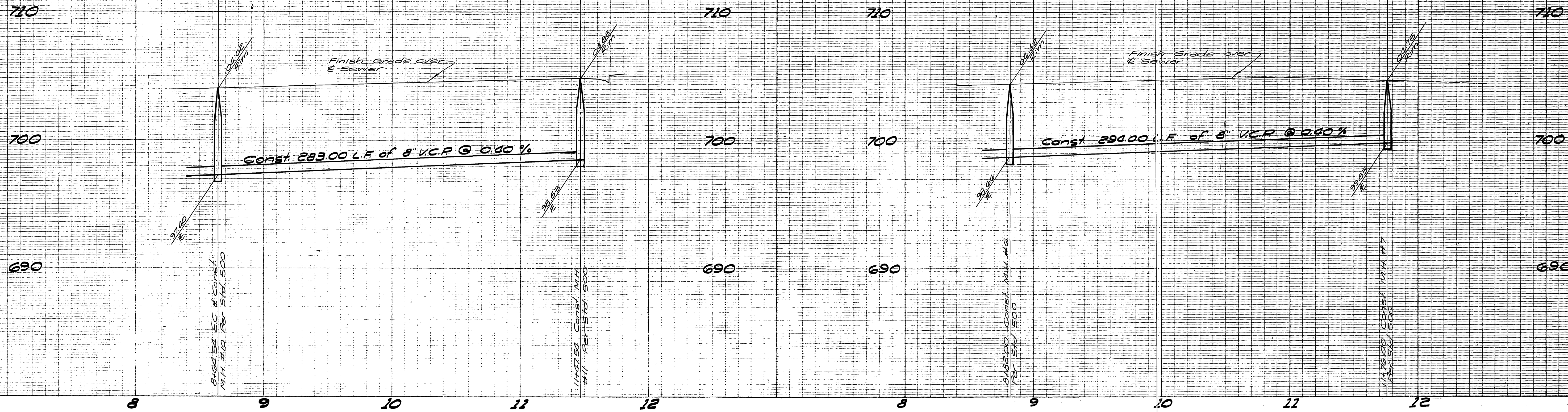
See Sheet No. 5

BENCH MARK:
R.R. Spike in power pole 24589-J at Southeast corner of La Sierra Ave and Collett Ave. C/R F.B. 91815 Elev. 704.25

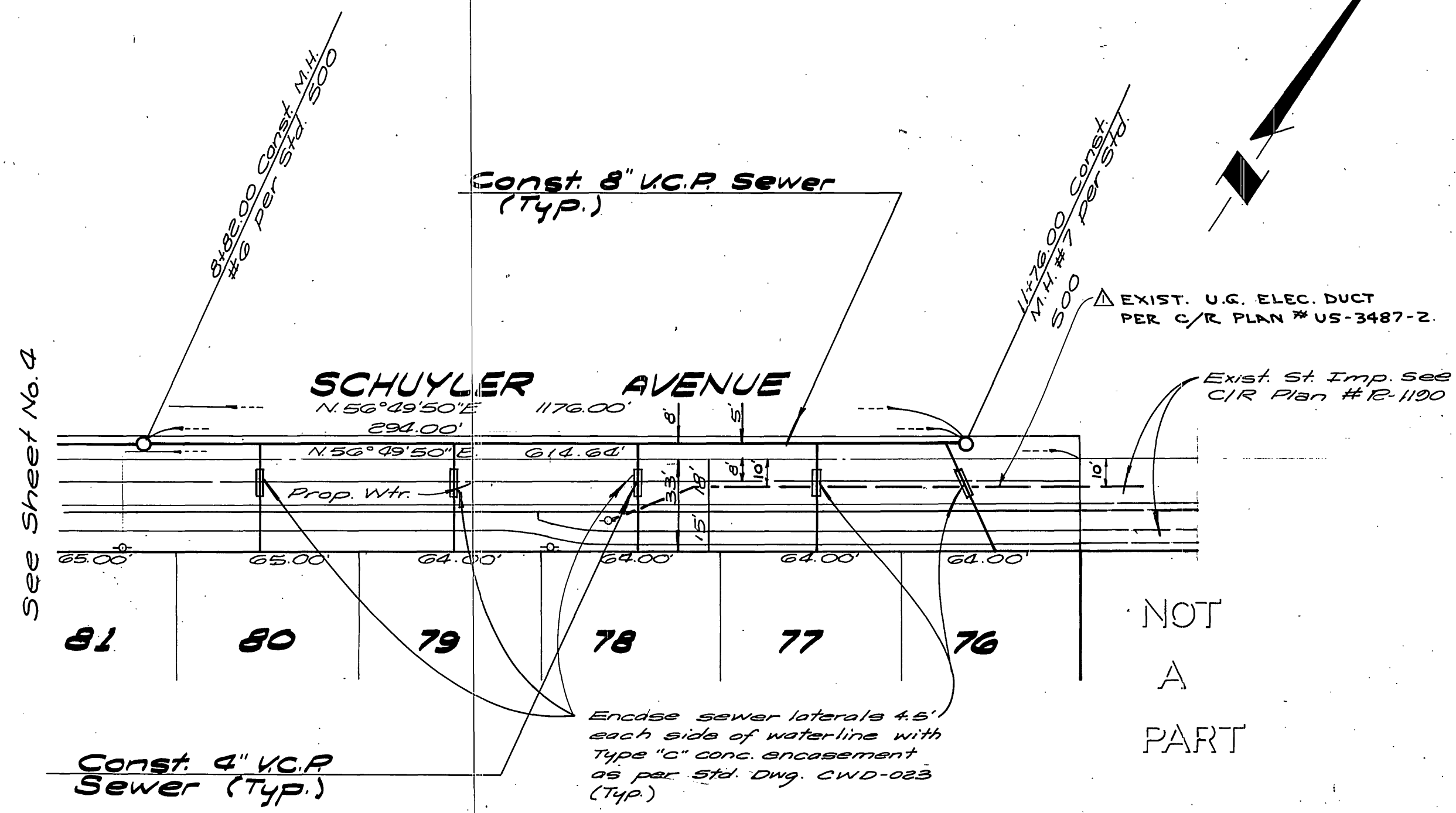
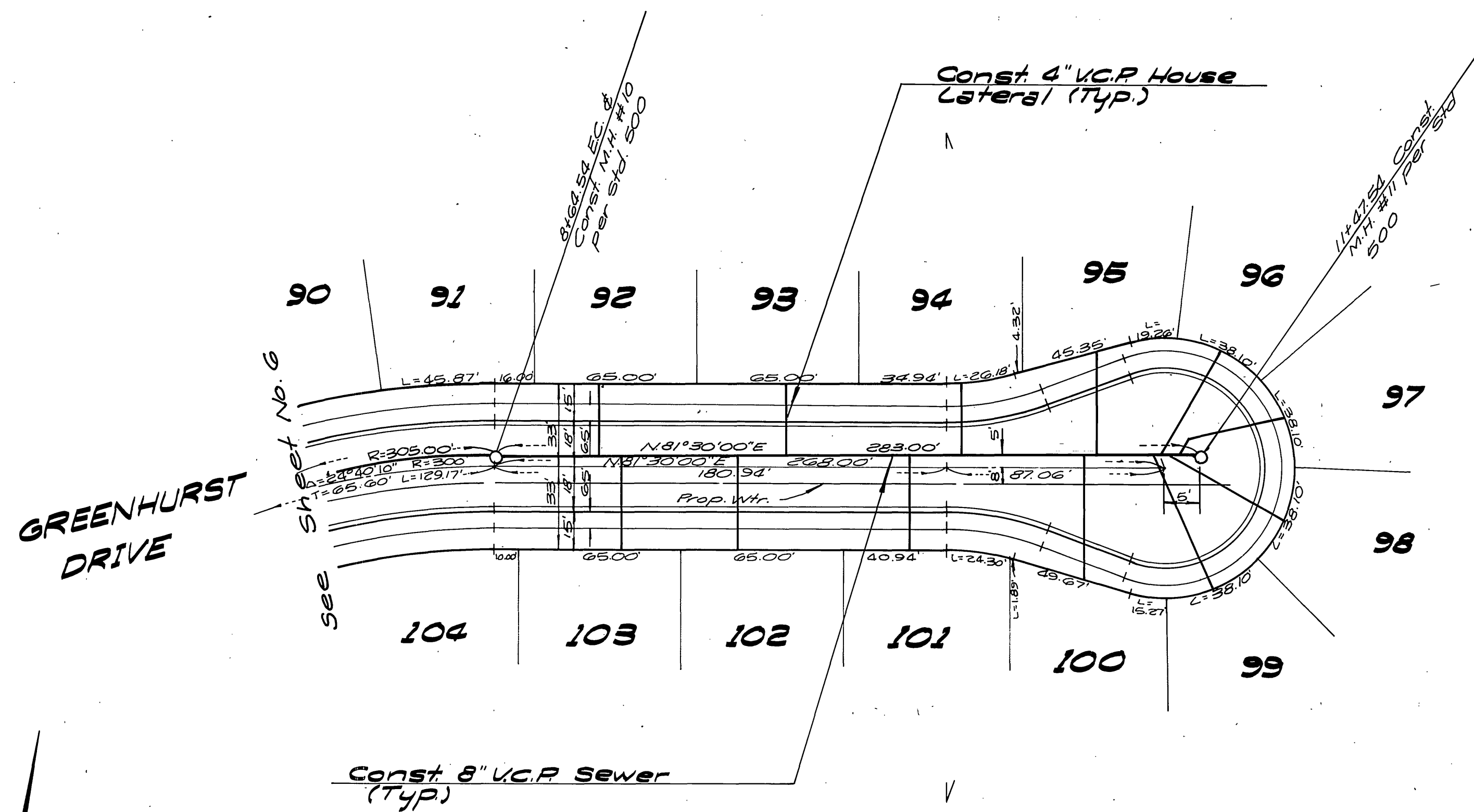
ALBERT A. WEBB ASSOCIATES CIVIL ENGINEERS RIVERSIDE, CALIFORNIA		CITY OF RIVERSIDE, CALIFORNIA PUBLIC WORKS DEPARTMENT	
APPROVED BY: <i>[Signature]</i>	DATE: 4/13/77	APPROVED BY: <i>[Signature]</i>	DATE: 5-11-77
R.E. No. 9876		PRINCIPAL ENGINEER	DIRECTOR OF PUBLIC WORKS
W.O. 76-103 FOR Processer Homes F.B. 1032	DESIGNED BY: RLT	TRAFFIC DIVISION	CHIEF PUB. WKS. ENGR.
	DRAWN BY: PH		DATE: 8/16/77
	CHECKED BY:		

City of Riverside Domestic System	
By: <i>[Signature]</i>	Date: 5-11-77
Chief Utilities Engineer - water	

SEWER PLAN AND PROFILE		ACCOUNT No.
TRACT 6763		DRAWING NUMBER
SCHUYLER AVENUE		5-1121
SCALE: Horiz. 1"=40', Vert. 1"=4'		SHEET 4 OF 9
		76-103-B

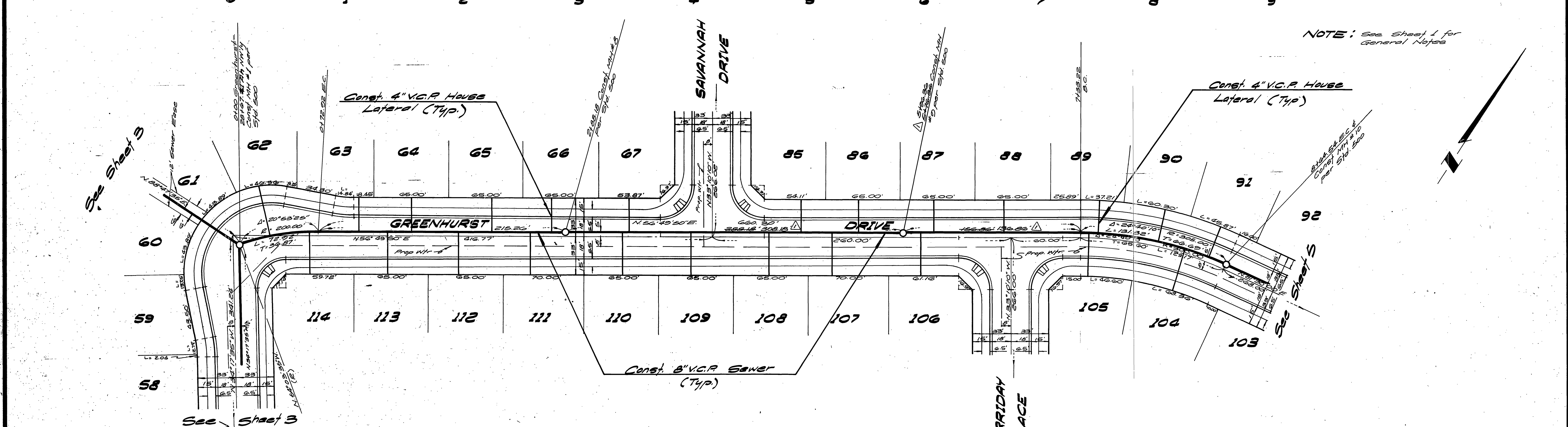
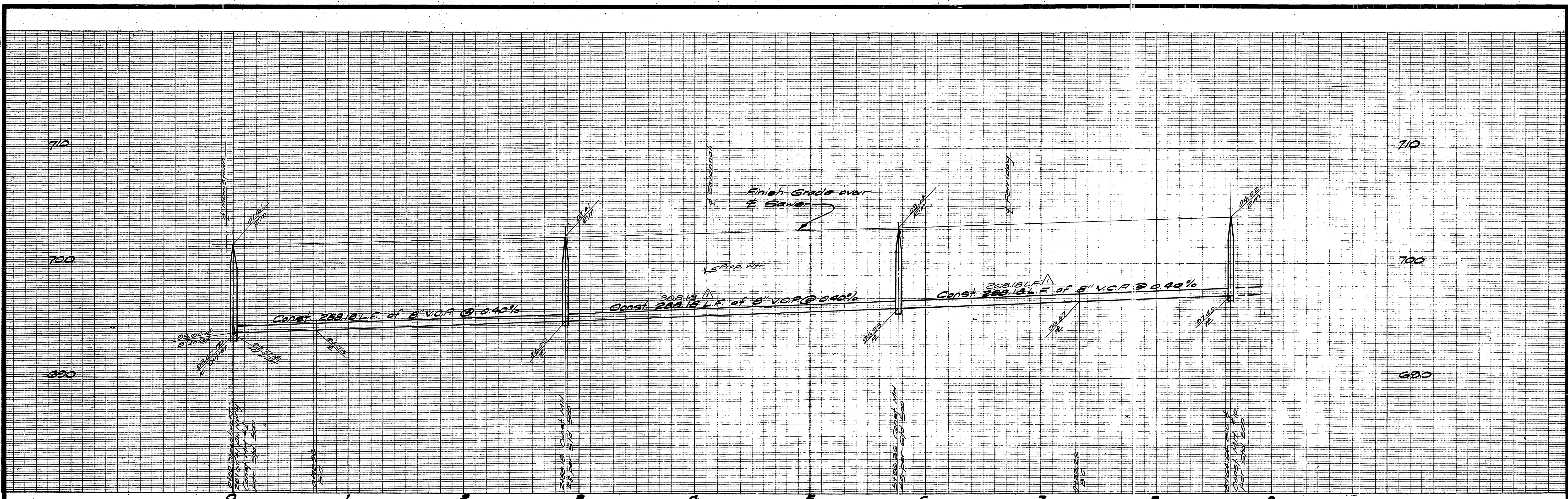


NOTE:
See Sheet No. 1 for General & Const. Notes.



BENCH MARK:
R.R. Spike in power pole No. 24589-1 at
Southeast corner of La Sierra Ave. and
Collett Ave. C/R R.B. 378/5 Elev. 704.25

ALBERT A. WEBB ASSOCIATES CIVIL ENGINEERS RIVERSIDE, CALIFORNIA APPROVED BY: <i>[Signature]</i> DATE: 4/3/77 R.E. No. 3876		City of Riverside Domestic System By: <i>[Signature]</i> DATE: 5-11-77 Chief Utilities Engineer - Water		CITY OF RIVERSIDE, CALIFORNIA PUBLIC WORKS DEPARTMENT APPROVED BY: <i>[Signature]</i> DATE: 8/16/77 DIRECTOR OF PUBLIC WORKS		SEWER PLAN AND PROFILE TRACT 6763 GREENHURST DRIVE SCHUYLER AVENUE SCALE: Horiz 1"=40', Vert 1"=4'		ACCOUNT No. DRAWING NUMBER S-1121 SHEET 5 OF 9 76.103.B	
W.O. 76-103 FOR: Pacesetter Homes F.B. 1032		DESIGNED BY: RLJ DRAWN BY: PH. CHECKED BY:		REVISIONS Δ ADDED U.G. ELEC. DUCT. 8" 30M N.O.H. 7/14/77		DATE: 8/16/77		NOT A PART	



NOTE: See Sheet 1 for General Notes

BENCH MARK:
 RR Spike in power pole No. 24539-T
 at Southeast corner of La Sierra Ave.
 and Collett Ave. C.R. F.B. 978/5.
 Elev. 704.25

ALBERT A. WEBB ASSOCIATES
 CIVIL ENGINEERS
 RIVERSIDE, CALIFORNIA
 APPROVED BY: *[Signature]* DATE: 4/13/77
 R.E. No. 2876

MARK	REVISIONS	APPRO. DATE
△	Revised MH Sta 5100.36	4/13/77

City of Riverside
 Domestic System
 By: *[Signature]* 5-11-77
 Chief Utilities Engineer - Water Date

CITY OF RIVERSIDE, CALIFORNIA
 PUBLIC WORKS DEPARTMENT

APPROVED BY: *[Signature]* DATE: 3/16/77
 PRINCIPAL ENGINEER
 PARK DEPARTMENT
 TRAFFIC DIVISION
 CHIEF PUB. WORKS ENGR.

SEWER PLANS AND PROFILE

TRACT 6763
GREENHURST DR.

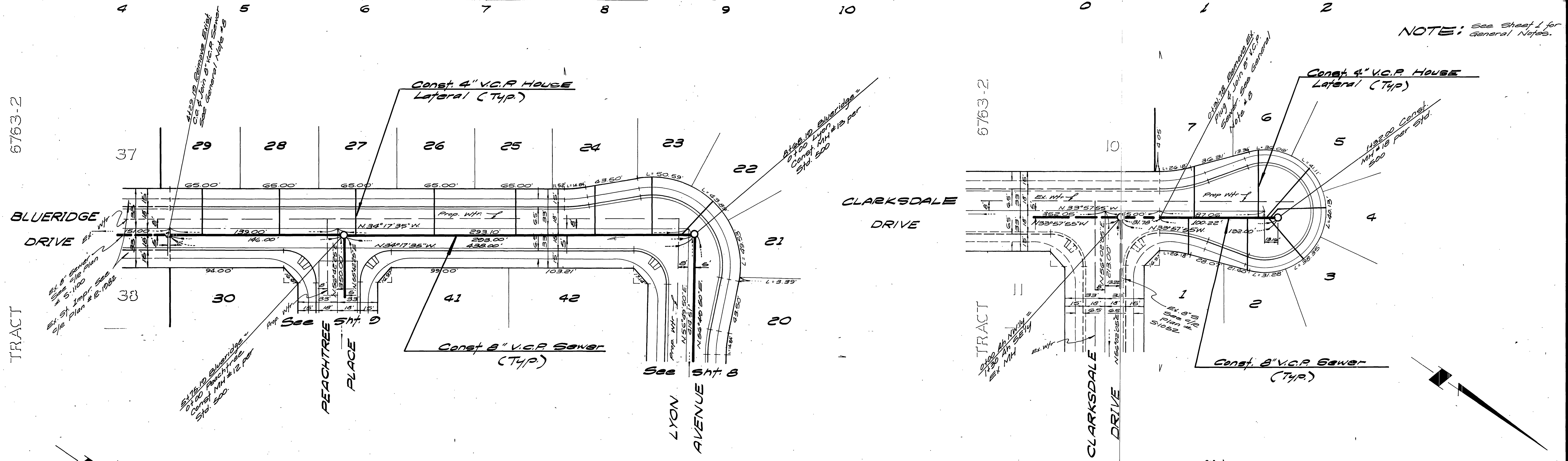
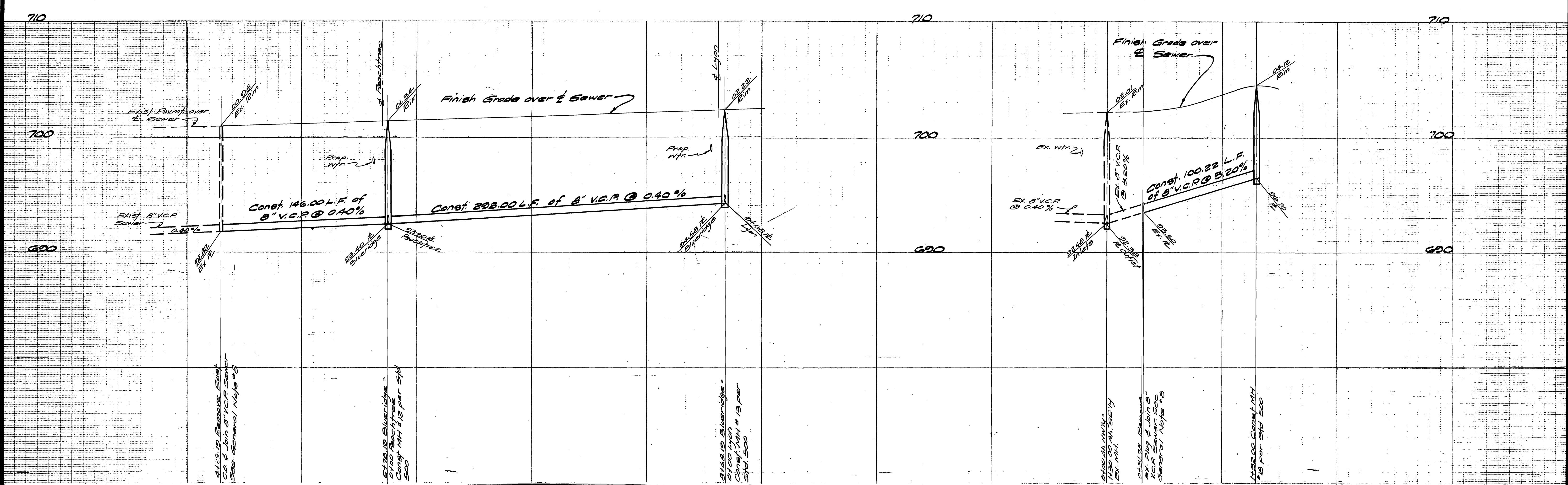
ACCOUNT No. **S-1121**
 DRAWING NUMBER
 SHEET **6** OF **9**
 76-103-B

SCALE: Hor: 1" = 40', Vert: 1" = 4'

See Sheet 3

See Sheet 3

See Sheet 5



NOTE: See Sheet 1 for General Notes.

BENCH MARK:
RR Spike in pp # 24589.7 at
S.E. corner La Sierra Ave. and
Collett Ave. C.R. F.B. 978/5
Elev. 704.25

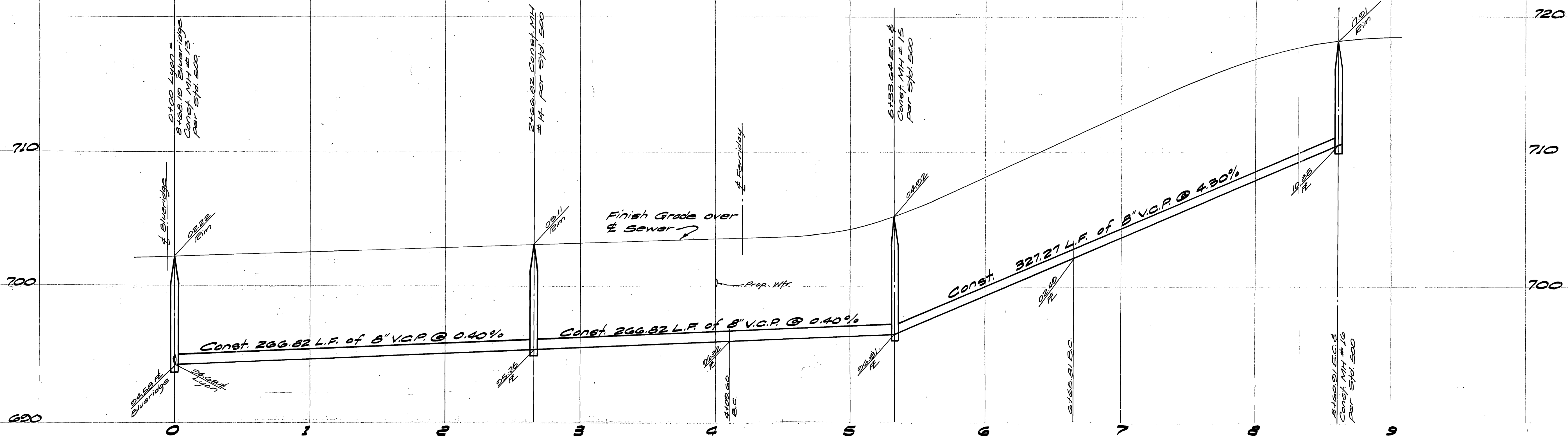
ALBERT A. WEBB ASSOCIATES
CIVIL ENGINEERS
RIVERSIDE, CALIFORNIA
APPROVED BY: *[Signature]* DATE: 4/13/77
R.E. No. 3872

MARK	REVISIONS	APPR.	DATE

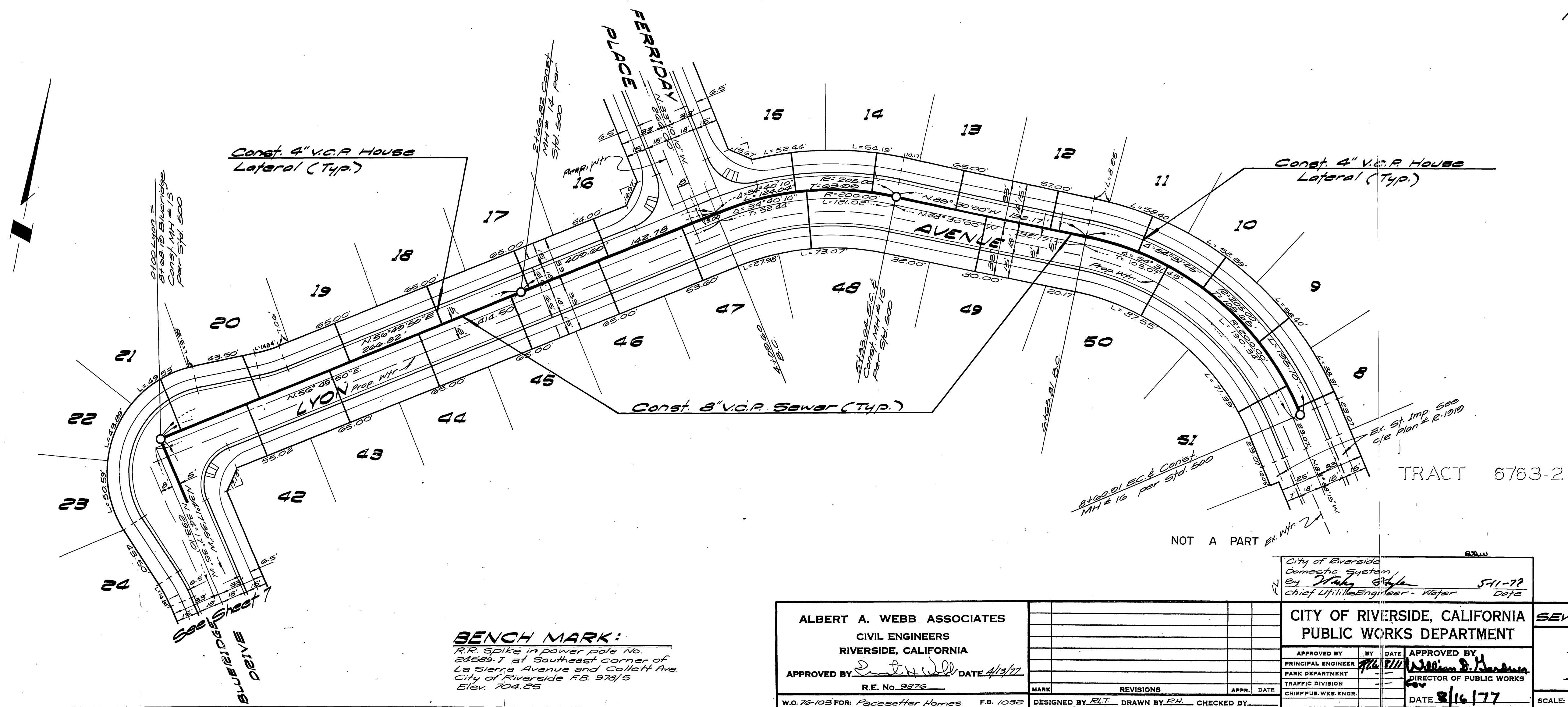
City of Riverside
Domestic System
By: *[Signature]* 5-11-77
Chief Utilities Engineer, Water Dept
CITY OF RIVERSIDE, CALIFORNIA
PUBLIC WORKS DEPARTMENT
APPROVED BY: *[Signature]* DATE: 8/16/77
PRINCIPAL ENGINEER
PARK DEPARTMENT
TRAFFIC DIVISION
CHIEF PUB. WKS. ENGR.

SEWER PLAN AND PROFILE
TRACT 6763
BLUERIDGE DR.
CLARKSDALE DR.
SCALE: Horiz. 1"=40', Vert. 1"=4'

ACCOUNT No.
DRAWING NUMBER
S-1121
SHEET 7 OF 9
76-103-B



NOTE: For General Notes See Sheet 1



BENCH MARK:
 R.R. Spike in power pole No. 24589-7 at Southeast corner of La Sierra Avenue and Collett Ave. City of Riverside F.B. 979/5 Elev. 704.25

ALBERT A. WEBB ASSOCIATES
 CIVIL ENGINEERS
 RIVERSIDE, CALIFORNIA
 APPROVED BY: *[Signature]* DATE 4/13/77
 R.E. No. 2276
 W.O. 76-103 FOR: Pacesetter Homes F.B. 1032

MARK	REVISIONS	APPR.	DATE

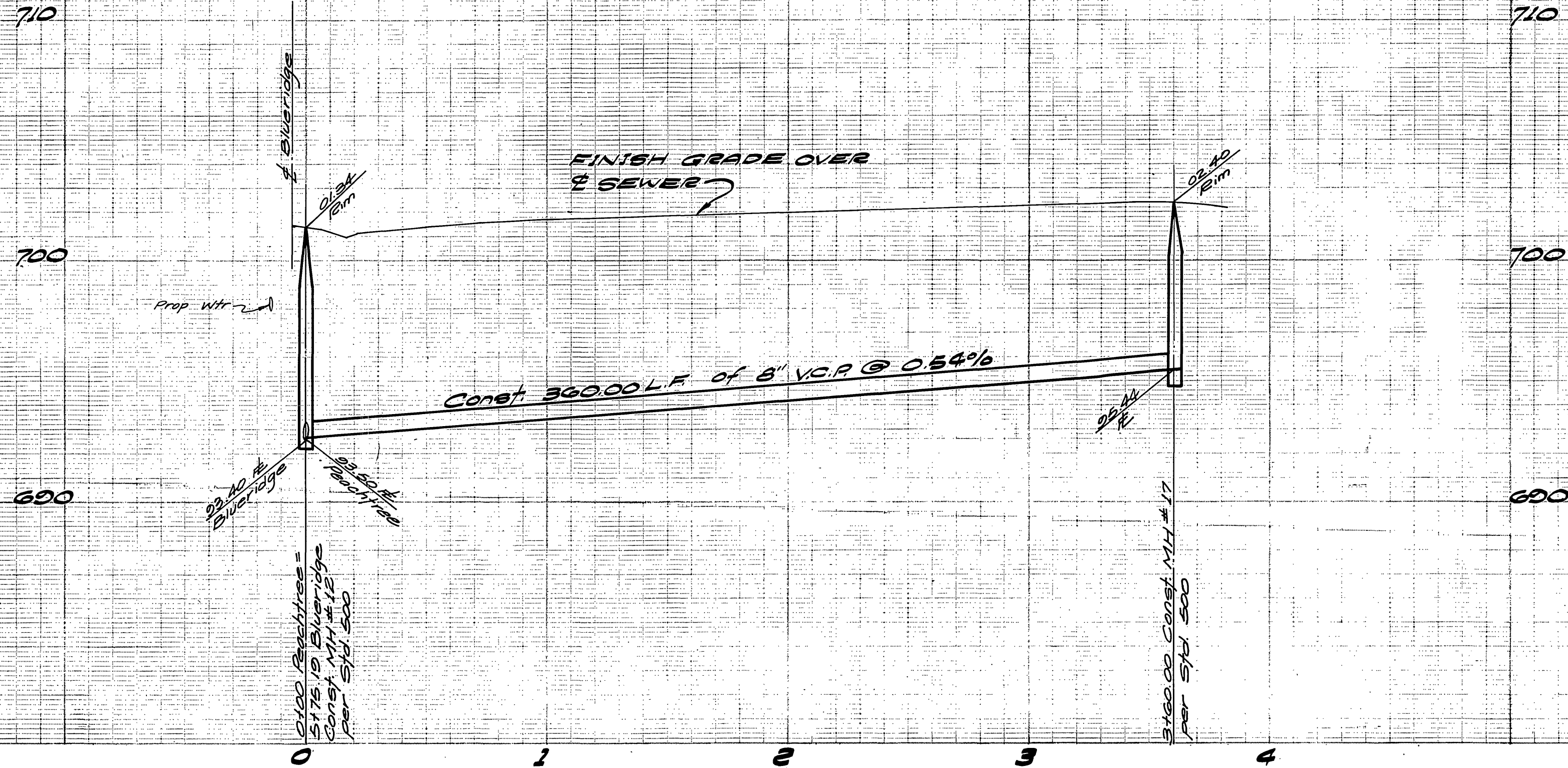
City of Riverside
 Domestic System
 By *[Signature]* 571-??
 Chief Utilities Engineer - Water Date

CITY OF RIVERSIDE, CALIFORNIA
 PUBLIC WORKS DEPARTMENT

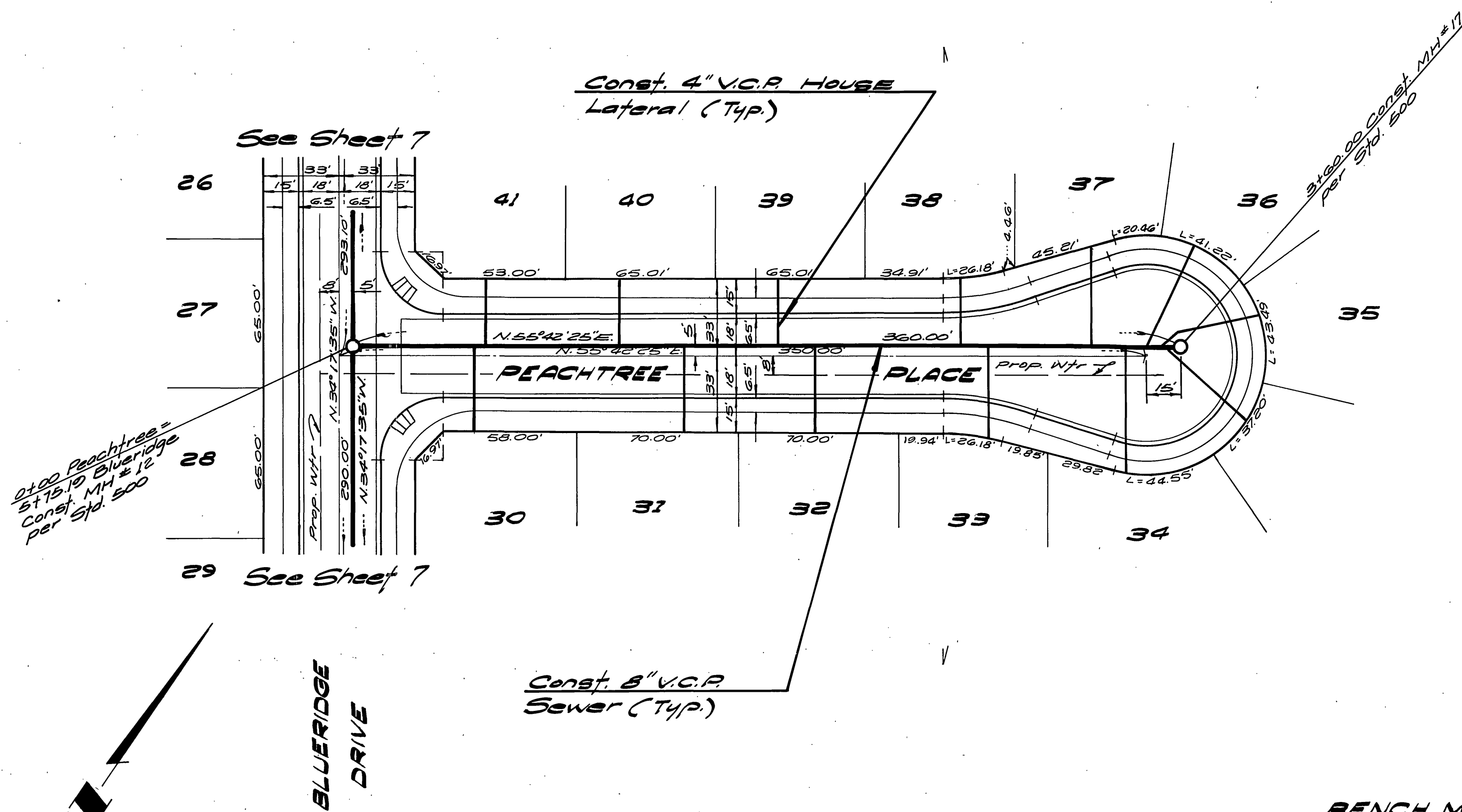
APPROVED BY: *[Signature]* DATE 3/16/77
 PRINCIPAL ENGINEER
 PARK DEPARTMENT
 TRAFFIC DIVISION
 CHIEF PUB. WKS. ENGR.

SEWER PLAN AND PROFILE
 TRACT 6763
 LYON AVENUE
 SCALE: Horiz. 1"=40', Vert 1"=4'

ACCOUNT No.
 DRAWING NUMBER
 S-1121
 SHEET 8 OF 2
 76-103-B



NOTE: See Sheet 1 for general notes



BENCH MARK:
 R.R. spike in p.p. # 24599-J @ S.E. corner La Sierra Ave. and Collett Ave. C.R. F.B. 978/5 Elev. 704.25

ALBERT A. WEBB ASSOCIATES.
 CIVIL ENGINEERS
 RIVERSIDE, CALIFORNIA
 APPROVED BY: *[Signature]* DATE 4/13/77
 R.E. No. 3976

MARK	REVISIONS	APPR.	DATE

CITY OF RIVERSIDE
 PUBLIC WORKS DEPARTMENT
 APPROVED BY: *[Signature]* DATE 5-11-77
 PRINCIPAL ENGINEER
 PARK DEPARTMENT
 TRAFFIC DIVISION
 CHIEF PUB. WORKS ENGINEER

SEWER PLAN AND PROFILE
 TRACT 6763
 PEACHTREE PL.

ACCOUNT No. _____
 DRAWING NUMBER
 S-1121
 SHEET 2 OF 2
 76-103-B

SCALE: Horiz 1"=40' Vert 1"=4'

DATE 8/16/77

W.O. 78-103 FOR Pacesetter Homes F.B. D32 DESIGNED BY R.L.T. DRAWN BY R.H. CHECKED BY _____