

INDEX MAP

**GENERAL NOTES**

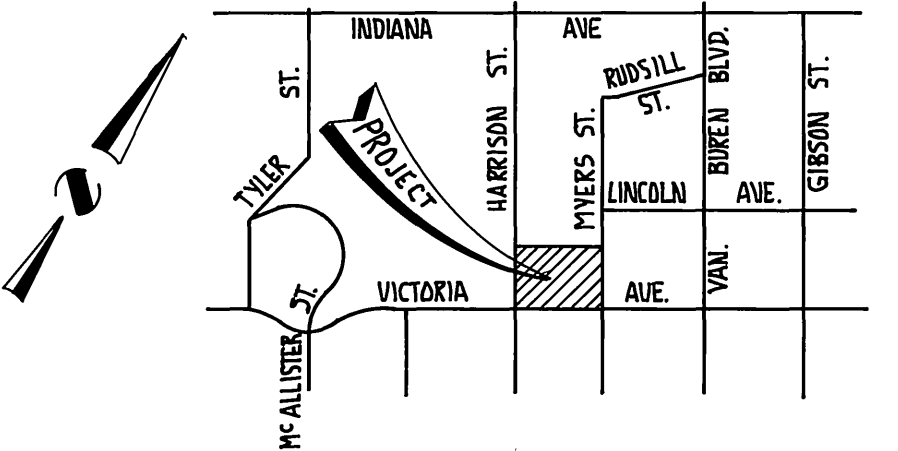
1. CONSTRUCTION SHALL BE IN ACCORDANCE WITH THE STANDARD SPECIFICATIONS FOR PUBLIC WORKS CONSTRUCTION, 1976 EDITION AND CITY OF RIVERSIDE STANDARD DRAWINGS.
2. IT SHALL BE THE RESPONSIBILITY OF THE CONTRACTOR TO CLEAR THE RIGHT-OF-WAY IN ACCORDANCE WITH THE PROVISIONS OF THE LAW AS IT EFFECTS EACH UTILITY INCLUDING IRRIGATION LINES AND APPURTENANCES AND AT NO COST TO THE CITY.
3. PIPE SHALL BE BEDDED PER CASE I, STANDARD DRAWING NO. 452, UNLESS OTHERWISE SPECIFIED ON PLANS.
4. LOCATION OF WYES AND LATERALS TO BE DETERMINED AT THE DIRECTION OF THE OWNER.
5. ALL STUBS AND LATERALS TO BE CONSTRUCTED IN ACCORDANCE WITH STANDARD DRAWING NO. 562. STUBS SHALL BE PLUGGED AND CAPPED.
6. MANHOLE FRAMES AND COVERS TO BE SET BY SEWER CONTRACTOR AFTER FINAL PAVING OF STREET.
7. LATERALS ARE TO BE 4" AND EXTENDED TO PROPERTY LINE.
8. PRIOR TO CONSTRUCTION OF SEWER CONTRACTOR IS TO EXPOSE EXISTING SEWER AND CONTACT THE ENGINEER FOR VERIFICATION OF EXISTING ELEVATIONS.
9. A PLUG SHALL BE INSTALLED AND WILL REMAIN IN PLACE WHERE THE NEW SEWER CONNECTS WITH THE EXISTING SEWER UNTIL THE NEW SEWER IS ACCEPTED BY THE CITY.

**NOTICE TO CONTRACTOR**

THE EXISTENCE AND LOCATION OF ANY UNDERGROUND UTILITY PIPES OR STRUCTURES SHOWN ON THESE PLANS ARE OBTAINED BY A SEARCH OF THE AVAILABLE RECORDS. TO THE BEST OF OUR KNOWLEDGE, THERE ARE NO EXISTING UTILITIES EXCEPT AS SHOWN ON THESE PLANS. THE CONTRACTOR IS REQUIRED TO TAKE DUE PRECAUTIONARY MEASURES TO PROTECT THE UTILITY LINES SHOWN AND ANY OTHER LINES NOT OF RECORD OR NOT SHOWN ON THESE PLANS.

**NOTICE TO ENGINEER**

THE PRIVATE ENGINEER SIGNING THESE PLAN IS RESPONSIBLE FOR ASSURING THE ACCURACY AND ACCEPTABILITY OF THE WORK HEREON. IN THE EVENT OF DISCREPANCIES ARISING DURING CONSTRUCTION AS A RESULT OF ERRORS OR OMISSIONS, THE PRIVATE ENGINEER SHALL BE RESPONSIBLE FOR DETERMINING AN ACCEPTABLE SOLUTION AND REVISING THE PLANS FOR APPROVAL BY THE CITY.



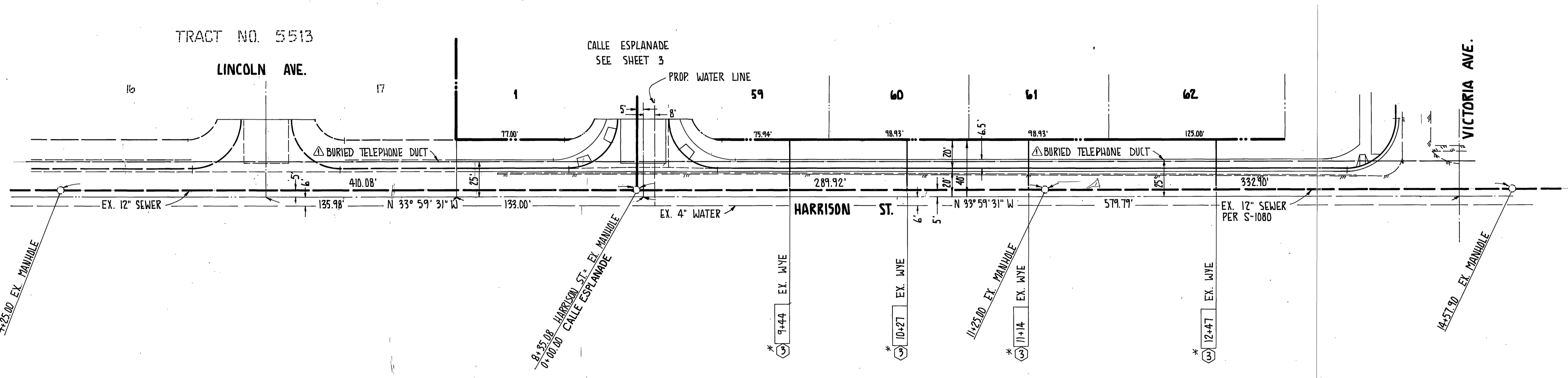
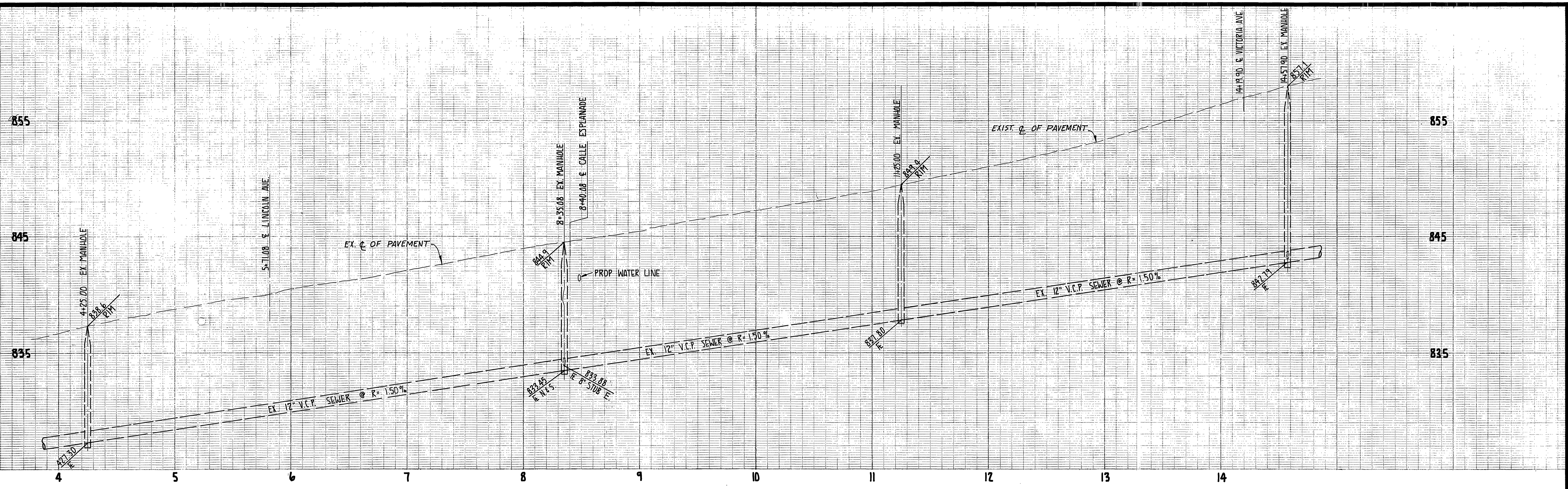
VICINITY MAP

**BENCH MARK**  
CITY OF RIVERSIDE B.M.# E-4-B, BEING A BRASS DISK IN A CAPPED WELL AT THE INTERSECTION OF VAN BUREN AND VICTORIA AVE. ELEV. 881.950

CITY OF RIVERSIDE DOMESTIC SYSTEM APPROVED BY:  <i>Wesley Taylor</i> 8-26-77 CHIEF UTILITIES ENGR., WATER DATE	<b>HALL &amp; FOREMAN, INC.</b> 2530 N. GRAND AVE. SANTA ANA, CALIF. 92711 (714) 558-8723	REVISIONS: NO. DESCRIPTION APP. BY. DATE	APPROVED BY: BY DATE PRINCIPAL ENGINEER: <i>[Signature]</i> 8/23 PARK DEPARTMENT TRAFFIC DIVISION CHIEF PUB. WKS. ENGR. 8/23 PLANNING DEPT.	PREPARED UNDER SUPERVISION OF: <i>[Signature]</i> REGISTERED CIVIL ENGINEER NO. 8340 DATE: 8-15-77	CITY OF RIVERSIDE, CALIFORNIA PUBLIC WORKS DEPARTMENT	SEWER PLAN & PROFILE TRACT NO. 8653	S-1126 SHEET 1 OF 7 SHEETS J.N. 2451
		ADDED TELEPHONE LINE # 9-12-77	APPROVED BY: <i>[Signature]</i> DIRECTOR OF PUBLIC WORKS DATE: 8-29-77	SCALE: AS SHOWN	W.O. FOR: STD. PACIFIC F.B. C 118		

\*AS BUILT 8-78 KBT

INDEXED R.R.



NOTE:  
SEE SHEET 1 FOR GENERAL NOTES.

**CONSTRUCTION NOTES**  
③ CONST. 4" SEWER LATERAL

**BENCH MARK**  
CITY OF RIVERSIDE B.M.#E-4-B. BEING A BRASS DISK IN A CAPPED WELL AT THE INTERSECTION OF VAN BUREN BLVD. AND VICTORIA AVE. ELEV. 881.950 INDEXED R.R.

CITY OF RIVERSIDE DOMESTIC SYSTEM  
APPROVED BY:  
*Wiley Hagan* 8-26-77  
CHIEF UTILITIES ENGR., WATER DATE

**HALL & FOREMAN, INC.**  
2530 N. GRAND AVE.  
SANTA ANA, CALIF. 92711  
(714) 558-8723

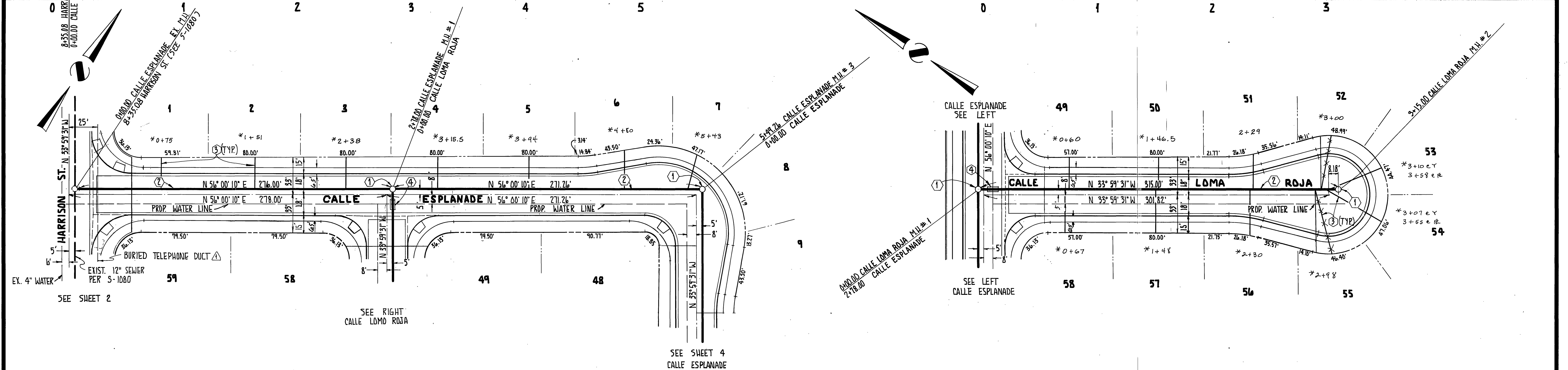
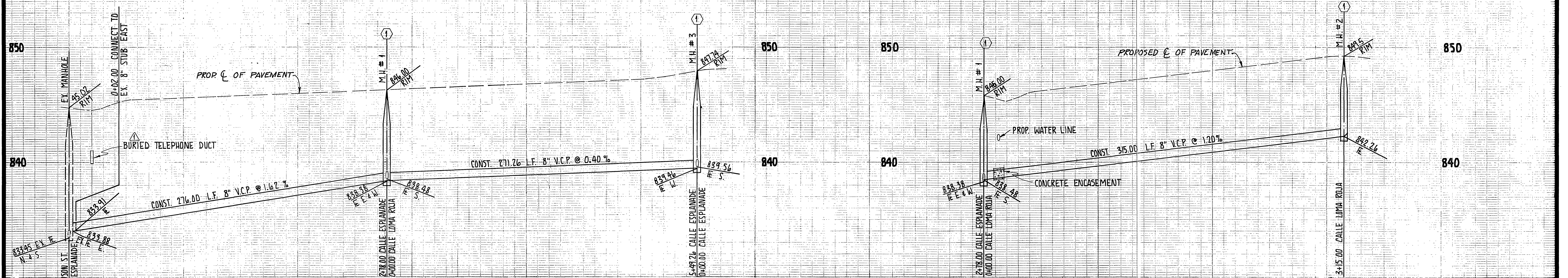
REVISIONS:		APPROVED BY		BY DATE	
NO.	DESCRIPTION	APP. BY	DATE	PRINCIPAL ENGINEER	DATE
1	ADDED TELEPHONE LINE		9-12-77		

PREPARED UNDER SUPERVISION OF:  
*Hugh H. Foreman Jr.*  
REGISTERED CIVIL ENGINEER NO. 8340  
DATE: 3-15-77  
APPROVED BY:  
*[Signature]*  
DIRECTOR OF PUBLIC WORKS  
DATE: 8-26-77

CITY OF RIVERSIDE, CALIFORNIA  
PUBLIC WORKS DEPARTMENT  
SCALE:  
HORIZ: 1"=40'  
VERT: 1"=4'  
DATE

SEWER PLAN & PROFILE  
TRACT NO. 8653  
**HARRISON STREET**  
W.O. FOR: STD. PACIFIC F.B. C 118

S-1126  
SHEET 2 OF 7 SHEETS



NOTE:  
SEE SHEET 1 FOR GENERAL NOTES.

**CONSTRUCTION NOTES**

- ① CONST. CITY OF RIVERSIDE STD. NO. 500 MANHOLE
- ② CONST. 8" V.C.P. SEWER
- ③ CONST. 4" SEWER LATERAL
- ④ CONST. PUBLIC UTILITY DWG. C.W.D. 023 CONCRETE ENCASEMENT (ENCASE SEWER MAIN 45" EACH SIDE OF WATER MAIN CROSSING WITH TYPE "C" CONCRETE)

**BENCH MARK**  
CITY OF RIVERSIDE B.M. #E-4-B, BEING A BRASS DISK IN A CAPPED WELL AT THE INTERSECTION OF VAN BUREN BLVD. AND VICTORIA AVE. ELEV. 881.950

CITY OF RIVERSIDE  
DOMESTIC SYSTEM  
APPROVED BY:  
*Wally S. ...*  
CHIEF UTILITIES ENGR., WATER DATE

**HALL & FOREMAN, INC.**  
2530 N. GRAND AVE.  
SANTA ANA, CALIF. 92711  
(714) 558-8723

REVISIONS:		APP. BY	DATE
NO.	DESCRIPTION		
1	ADDED TELEPHONE LINE		9-12-77

APPROVED BY: *[Signature]*  
PRINCIPAL ENGINEER  
DATE: 3-15-77

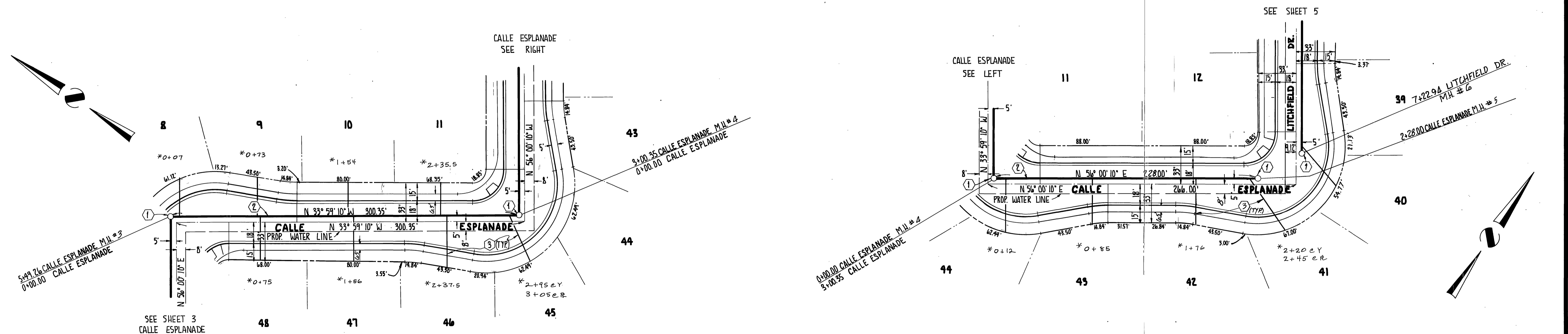
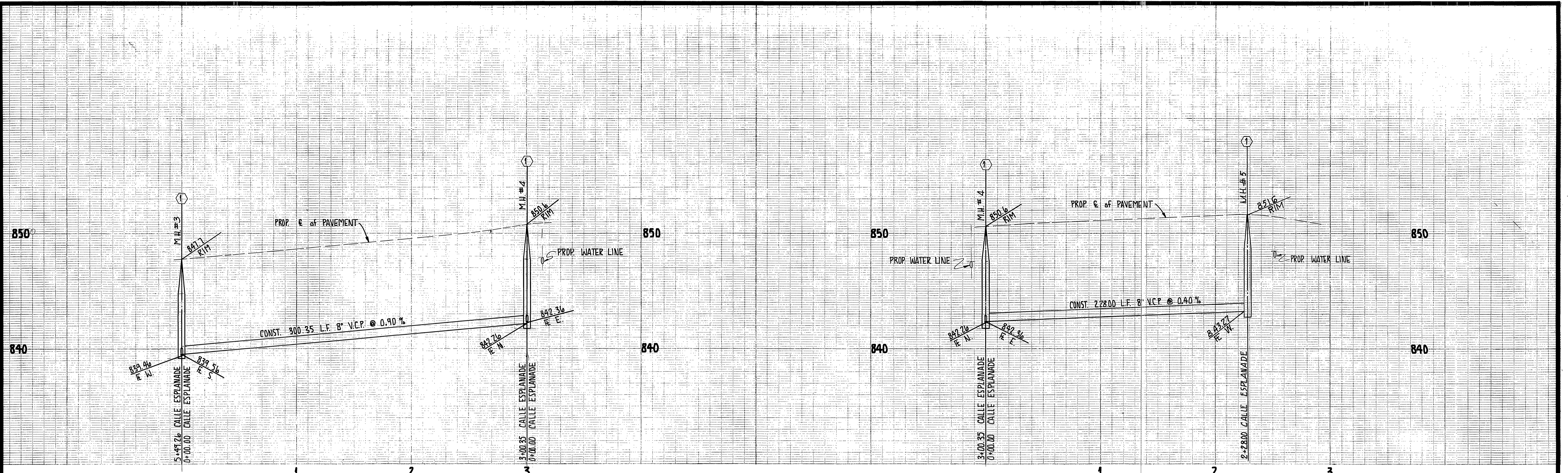
APPROVED BY: *[Signature]*  
DIRECTOR OF PUBLIC WORKS  
DATE: 8-29-77

CITY OF RIVERSIDE, CALIFORNIA  
PUBLIC WORKS DEPARTMENT

SCALE:  
HORIZ: 1" = 40'  
VERT: 1" = 4'

SEWER PLAN & PROFILE  
TRACT NO. 8653  
**CALLE ESPLANADE & CALLE LOMA ROJA**

SHEET 3 OF 7 SHEETS  
S-1126



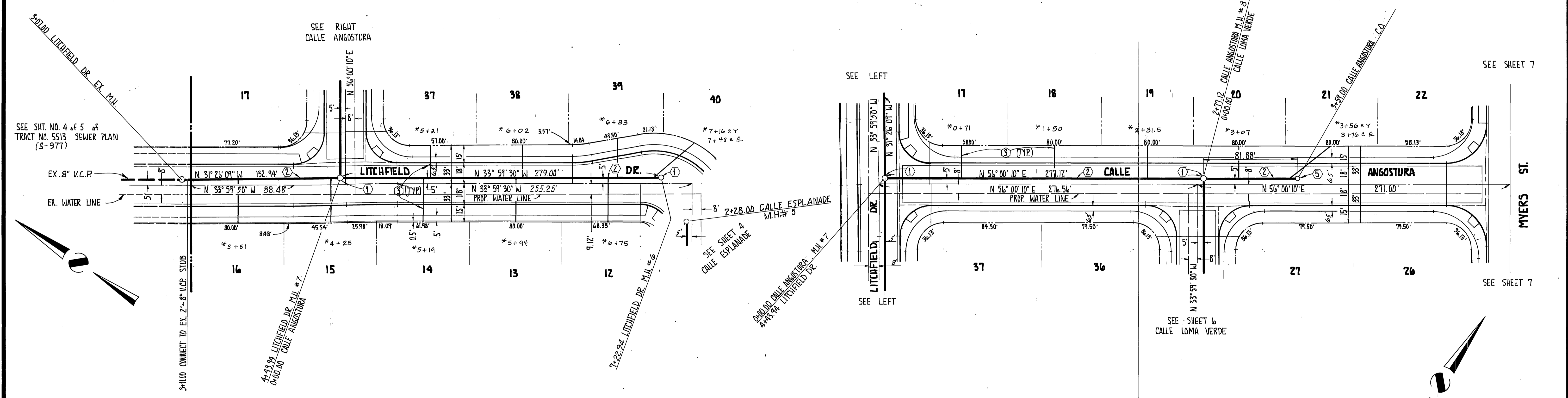
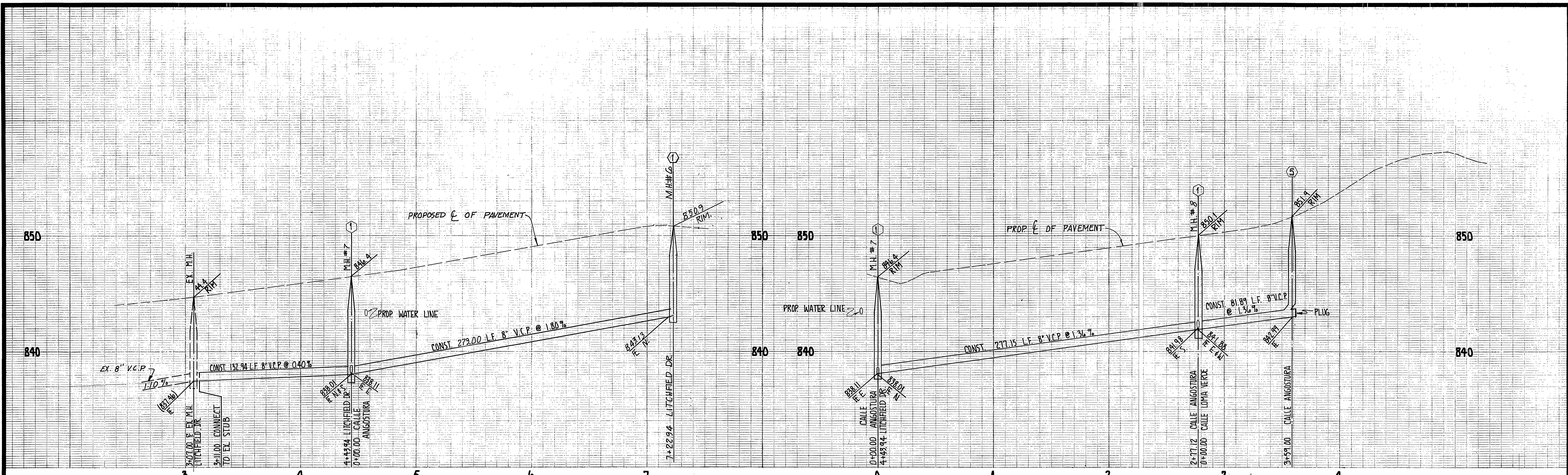
NOTE:  
SEE SHEET 1 FOR GENERAL NOTES.

**CONSTRUCTION NOTES**

- ① CONST. CITY OF RIVERSIDE STD. NO. 500 MANHOLE
- ② CONST. 8" V.C.P. SEWER
- ③ CONST. 4" SEWER LATERAL

**BENCH MARK**  
CITY OF RIVERSIDE B.M.\*E-4-B, BEING A BRASS DISK IN A  
IN A CAPPED WELL AT THE INTERSECTION OF VAN BUREAU BLVD.  
AND VICTORIA AVE. ELEV. 881.950

CITY OF RIVERSIDE DOMESTIC SYSTEM APPROVED BY:  <i>Walter Allen</i> 8-26-77 CHIEF UTILITIES ENGR. WATER DATE	<b>HALL &amp; FOREMAN, INC.</b> 2530 N. GRAND AVE. SANTA ANA, CALIF. 92711 (714) 558-8723	REVISIONS:	APPROVED BY: <i>[Signature]</i> BY DATE: 8/23/77 PRINCIPAL ENGINEER PARK DEPARTMENT TRAFFIC DIVISION CHIEF PUB. WKS. ENGR. PLANNING DEPT.	PREPARED UNDER SUPERVISION OF: <i>[Signature]</i> REGISTERED CIVIL ENGINEER NO. 8940 DATE: 3-15-77	CITY OF RIVERSIDE, CALIFORNIA PUBLIC WORKS DEPARTMENT	SEWER PLAN & PROFILE TRACT NO. 8653 <b>CALLE ESPLANADE</b>	SHEET 4 OF 7 SHEETS
		APPROVED BY: <i>[Signature]</i> DATE: 8-26-77 DIRECTOR OF PUBLIC WORKS	SCALE: HORIZ: 1"=40' VERT: 1"=4' DATE:	W.O. FOR: STD. PACIFIC F.B. C 118	S-1126		



**CONSTRUCTION NOTES**

- ① CONST. CITY OF RIVERSIDE STD. NO. 500 MANHOLE
- ② CONST. 8" V.C.P. SEWER
- ③ CONST. 4" SEWER LATERAL
- ④ CONST. CITY OF RIVERSIDE STD. NO. 560 CLEAN OUT

**BENCH MARK**  
 CITY OF RIVERSIDE B.M.\*E-4-B BEING A BRASS DISK IN A CAPPED WELL AT THE INTERSECTION OF VAN BUREN BLVD. AND VICTORIA AVE. ELEV. 881.950

CITY OF RIVERSIDE  
 DOMESTIC SYSTEM  
 APPROVED BY  
*Wesley Hyman* 8-26-77  
 CHIEF UTILITIES ENGR. WATER DATE

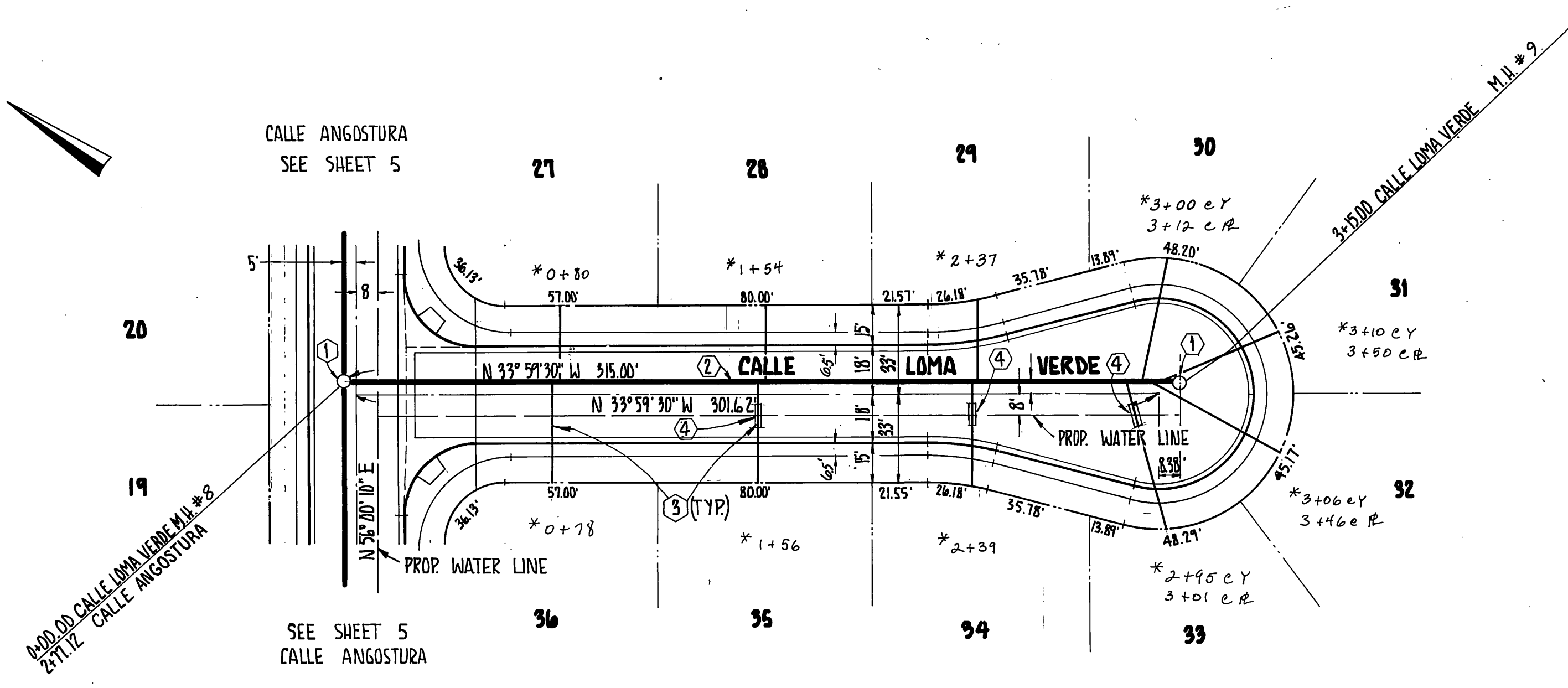
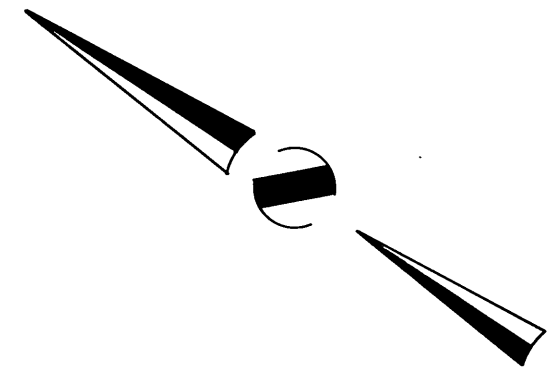
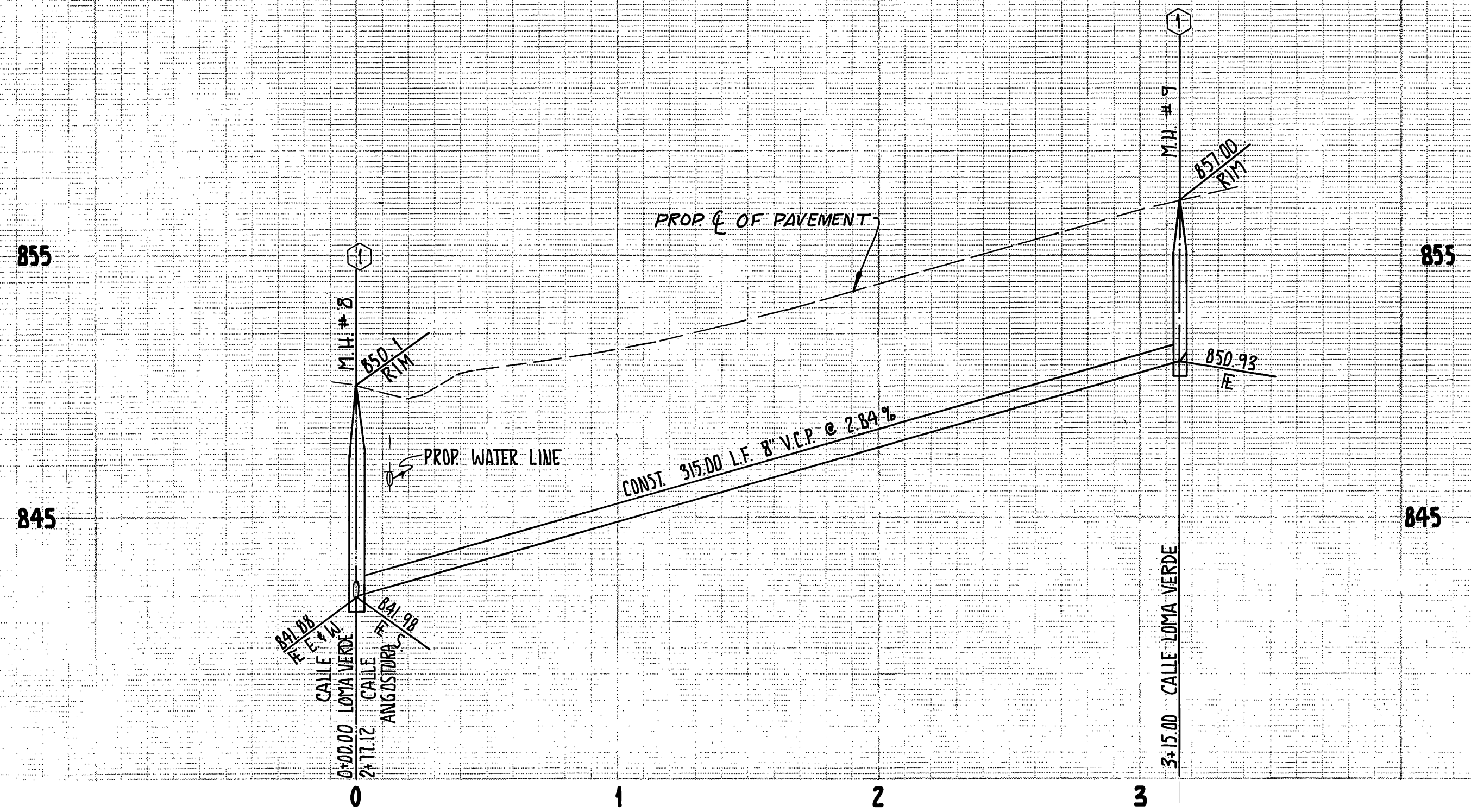
**HALL & FOREMAN, INC.**  
 2530 N. GRAND AVE.  
 SANTA ANA, CALIF. 92711  
 (714) 558-8723

REVISIONS:	APPROVED BY:	BY:	DATE:
	PRINCIPAL ENGINEER	<i>[Signature]</i>	8/29
	PARK DEPARTMENT		
	TRAFFIC DIVISION		
	CHIEF PUB. WKS. ENGR.	<i>[Signature]</i>	8/29
	PLANNING DEPT.		

PREPARED UNDER SUPERVISION OF:  
*Harold B. Jarama*  
 REGISTERED CIVIL ENGINEER NO. 8540  
 DATE: 3-15-77  
 APPROVED BY:  
*[Signature]*  
 DIRECTOR OF PUBLIC WORKS  
 DATE: 8-28-77

CITY OF RIVERSIDE, CALIFORNIA  
 PUBLIC WORKS DEPARTMENT  
 SCALE:  
 HORIZ: 1" = 40'  
 VERT: 1" = 4'

SEWER PLAN & PROFILE  
 TRACT NO. 8653  
 LITCHFIELD DRIVE &  
 CALLE ANGSTURIA  
 S-1126  
 SHEET 5 OF 7 SHEETS  
 W.O. FOR: STD. PACIFIC F.B. C 118



**NOTE:**  
SEE SHEET 1 FOR GENERAL NOTES.

- CONSTRUCTION NOTES**
- ① CONST. CITY OF RIVERSIDE STD. NO. 500 MANHOLE
  - ② CONST. 8" V.C.P. SEWER
  - ③ CONST. 4" SEWER LATERAL
  - ④ CONST. PUBLIC UTILITY DWG. C.W.D. 023 CONCRETE ENCASEMENT (ENCASE SEWER LATERALS 4.5' EACH SIDE OF WATER MAIN CROSSING WITH TYPE "C" CONCRETE)

**BENCH MARK**  
CITY OF RIVERSIDE B.M.\*E-4-B, BEING A BRASS DISK IN A CAPPED WELL AT THE INTERSECTION OF VAN BUREN BLVD AND VICTORIA AVE. ELEV. 881.950

CITY OF RIVERSIDE  
DOMESTIC SYSTEM  
APPROVED BY:  
*Walter Hoffman* 2-26-77  
CHIEF UTILITIES ENGR. WATER DATE

**HALL & FOREMAN, INC**  
2530 N. GRAND AVE.  
SANTA ANA, CALIF. 92711  
(714) 588-8723

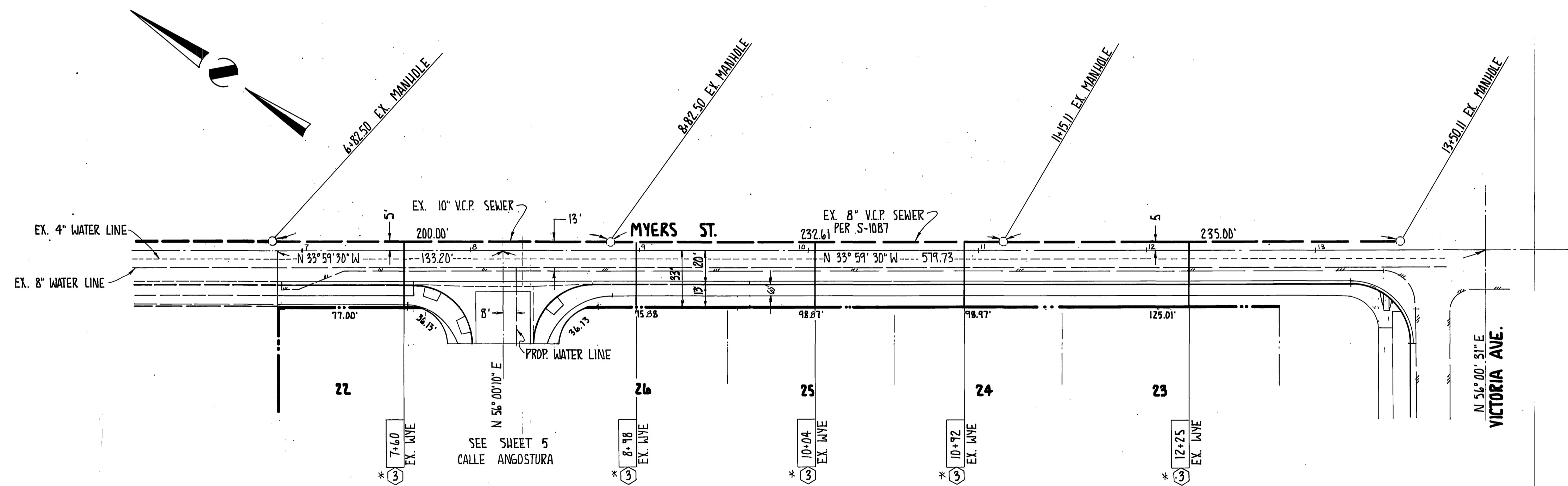
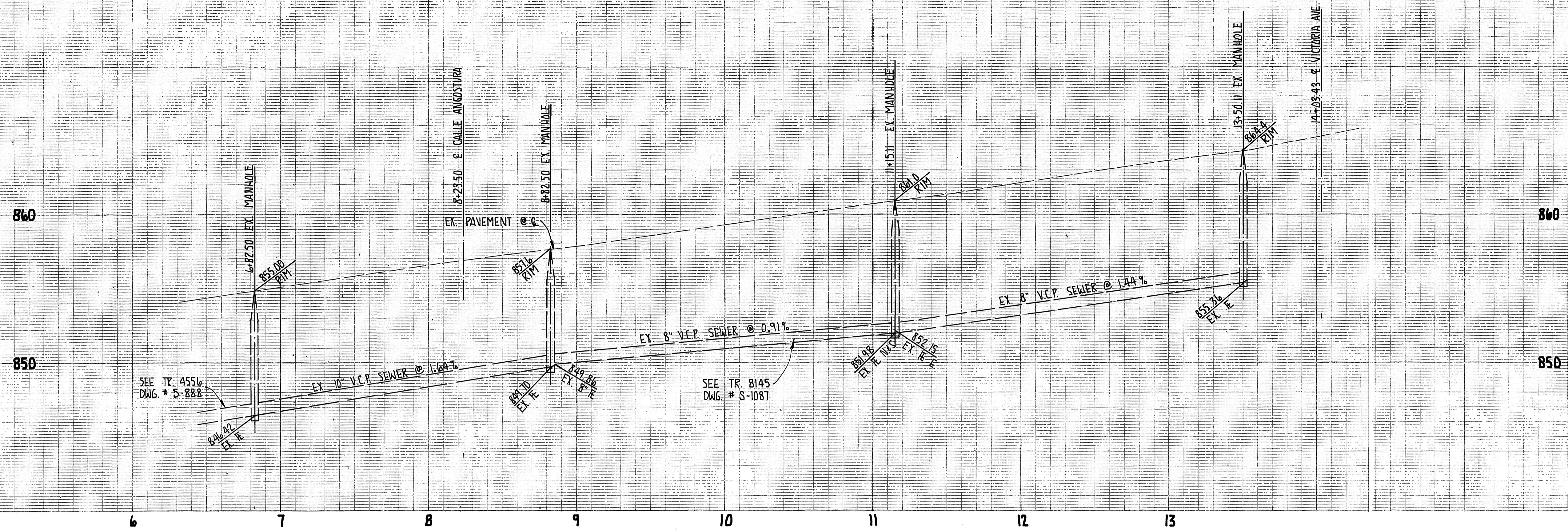
REVISIONS:	APPROVED BY:	BY:	DATE:
	PRINCIPAL ENGINEER	<i>[Signature]</i>	3-15-77
	PARK DEPARTMENT		
	TRAFFIC DIVISION		
	CHIEF PUB. WKS. ENGR.		3-29
	PLANNING DEPT.		

PREPARED UNDER SUPERVISION OF:  
*Neal W. Foreman Jr.*  
REGISTERED CIVIL ENGINEER NO. 6340  
DATE: 3-15-77  
APPROVED BY:  
*[Signature]*  
DIRECTOR OF PUBLIC WORKS  
DATE: 3-29-77

CITY OF RIVERSIDE, CALIFORNIA  
PUBLIC WORKS DEPARTMENT  
SCALE:  
HORIZ: 1" = 40'  
VERT: 1" = 4'

SEWER PLAN & PROFILE  
TRACT NO. 8153  
**CALLE LOMA VERDE**  
W.O. FOR: STD. PACIFIC F.B. C 118

S-1126  
SHEET 6 OF 7 SHEETS  
J.N. 2451



NOTE:  
SEE SHEET 1 FOR GENERAL NOTES.

**CONSTRUCTION NOTES**  
 ③ - CONST. 4" SEWER LATERALS

**BENCH MARK**  
 CITY OF RIVERSIDE B.M. #E-4-B, BEING A BRASS DISK IN A CAPPED WELL  
 AT THE INTERSECTION OF VAN BUREN BLVD. AND VICTORIA AVE.  
 ELEV. 881.950

CITY OF RIVERSIDE  
 DOMESTIC SYSTEM  
 APPROVED BY:  
*Wiley H. Hays* 8-26-77  
 CHIEF UTILITIES ENGR., WATER DATE

**HALL & FOREMAN, INC.**  
 2530 N. GRAND AVE.  
 SANTA ANA, CALIF. 92711  
 (714) 558-8723

REVISIONS:	APPROVED BY:	BY:	DATE:
	PRINCIPAL ENGINEER	<i>[Signature]</i>	8/28
	PARK DEPARTMENT		
	TRAFFIC DIVISION		
	CHIEF PUB. WKS. ENGR.		8-25
	PLANNING DEPT.		

APPROVED BY:  
*[Signature]*  
 DIRECTOR OF PUBLIC WORKS

PREPARED UNDER SUPERVISION OF:  
*Paul H. Joerns*  
 REGISTERED CIVIL ENGINEER NO. 8340  
 DATE: 3-15-77  
 APPROVED BY:  
 DATE: 8-29-77

CITY OF RIVERSIDE, CALIFORNIA  
 PUBLIC WORKS DEPARTMENT  
 SCALE:  
 HORIZ: 1"=40'  
 VERT: 1"=4'  
 DATE

SEWER PLAN & PROFILE  
 TRACT NO. 8653  
**MYERS STREET**  
 W.O. FOR: STD. PACIFIC F.B. C 118

S-1126  
 SHEET 7  
 OF 7  
 SHEETS