

GENERAL NOTES

1. Construction shall be in accordance with the standard specifications for public works construction 1978 Edition and the City of Riverside standard Drawings.
2. It shall be the responsibility of the Contractor to clear the Right of way in accordance with the provisions of law as it affects each utility including irrigation lines and appurtenances and at no cost to the City.
3. Pipe shall be bedded per Case 2, standard Drawing No. 452, unless otherwise specified on the plans.
4. Location of wyes and laterals to be determined in the field at the direction of the owner.
5. All stubs and laterals to be constructed in accordance with standard Drawing No. 562 stubs shall be plugged and capped.
6. Manhole frames and covers to be set as noted in profiles by sewer contractor after final paving of streets.
7. Laterals are to be 4" V.C.P. and extended to property line.
8. Prior to construction the sewer contractor is to expose the existing sewer and contact the engineer for verification of existing location and elevation.
9. Plugs shall be installed and will remain in place where the new sewer conflicts with the existing sewer until such time as the new sewer is accepted by the City.

NOTICE TO CONTRACTOR

The existence and location of underground utility pipes or structures shown on these plans are obtained by a search of the available records. To the best of our knowledge there are no existing utilities except as shown on these plans. The Contractor is required to take due precautionary measures to protect the utility lines shown and any other lines not of record or not shown on these plans.

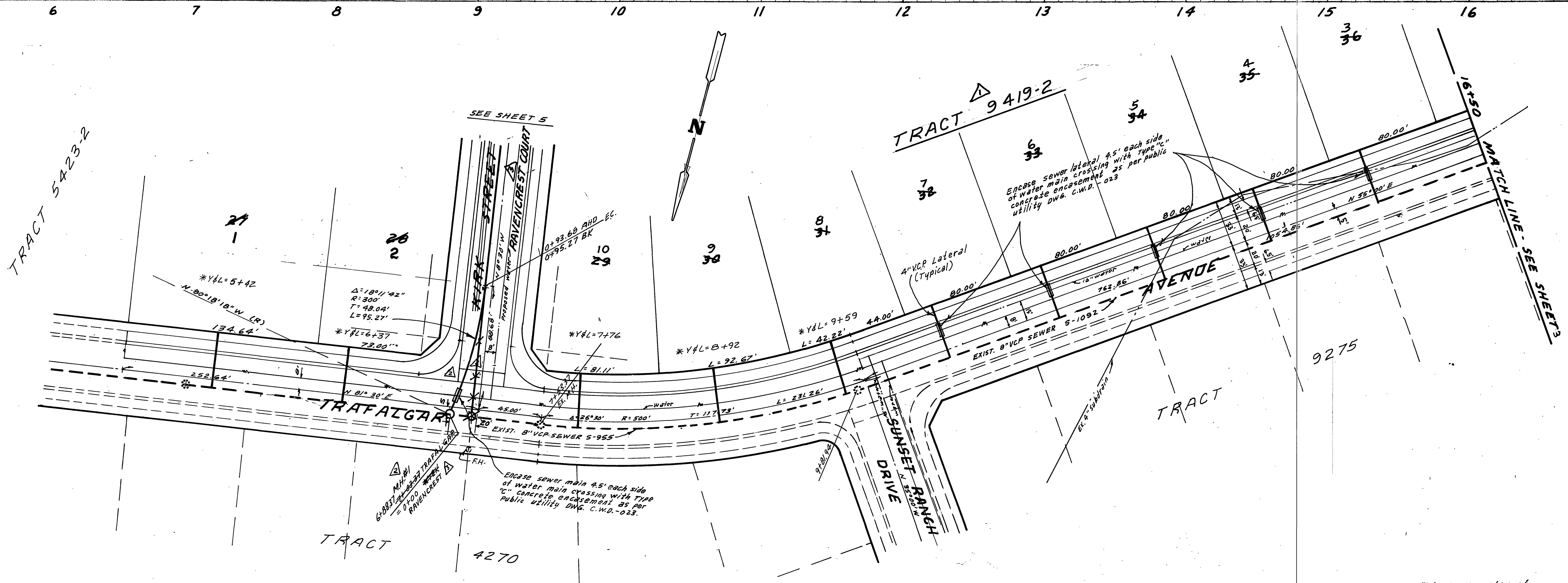
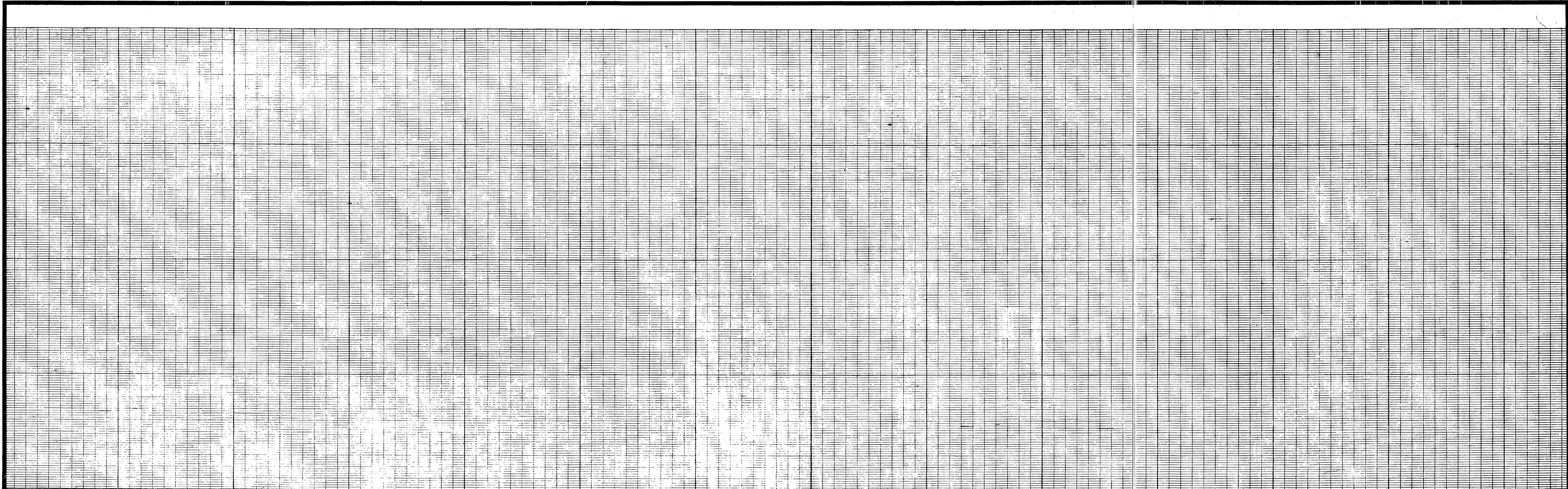
NOTE:

The private engineer signing these plans is responsible for the accuracy and acceptability of the work herein. In the event of circumstances arising during construction, the private engineer shall be responsible for determining an acceptable solution and revising the plans for approval by the City.

BENCH MARK: Elev 1136.542
C/R B.M. No. B-7-C P.K. nail in curb return S.E. Corner Chicago and Alessandro.

* As built 11/86 TE

CITY OF RIVERSIDE DOMESTIC SYSTEM APPROVED BY: <i>Harley Hylle</i> 6-16-77 CHIEF UTILITIES ENGINEER, WATER, DATE	ALBERT A. WEBB ASSOCIATES CIVIL ENGINEERS RIVERSIDE, CALIFORNIA APPROVED BY: <i>Paul N. Webb</i> DATE: 5/2/77 R.E. No. 9876	CITY OF RIVERSIDE, CALIFORNIA PUBLIC WORKS DEPARTMENT APPROVED BY: <i>John J. [Signature]</i> DATE: 10-5-77 PRINCIPAL ENGINEER PARK DEPARTMENT TRAFFIC DIVISION CHIEF PUB. WKS. ENGR.	ACCOUNT NO. DRAWING NUMBER 5-1130 SHEET 1 OF 7 77-46-B
	W.O. 77-46 FOR: A.C. Nejedly F.B. 1022 DESIGNED BY: BEL DRAWN BY: BEL CHECKED BY:	REVISIONS MARK APPR. DATE Added TR 9419-F 8-29-83 WE Added outline of Tract 9419-3 Added outline of Tract 9419-2 Added outline of Tract 9419-1	APPROVED BY: <i>John J. [Signature]</i> DATE: 10-5-77 DIRECTOR OF PUBLIC WORKS



BENCH MARK: Elev. 1136.542
 C/R B.M. No. G-7-C AK nail in curb return S.E. corner Chicago and Alessandro.

*As built 11/86 7E

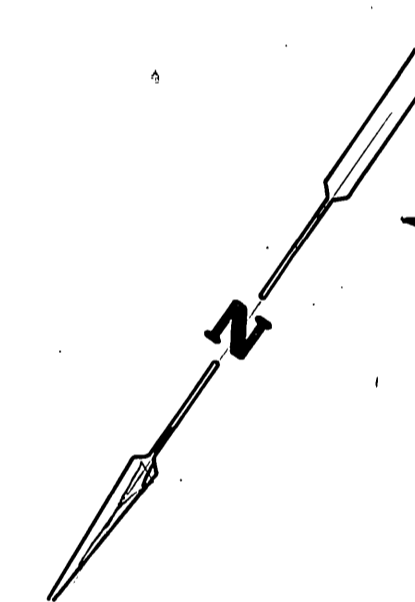
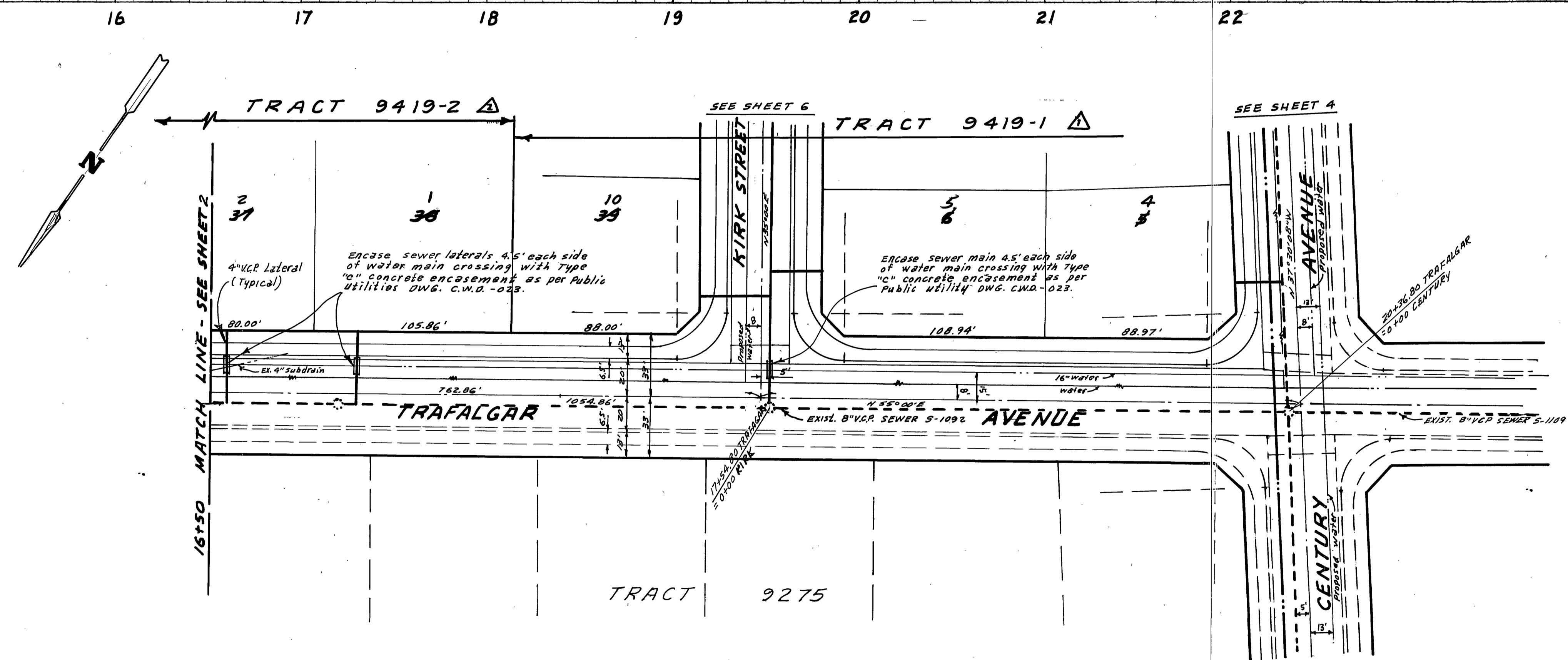
CITY OF RIVERSIDE
 DOMESTIC SYSTEM
 APPROVED BY: *[Signature]* 6-16-77
 CHIEF UTILITIES ENGINEER, WATER, DATE

ALBERT A. WEBB ASSOCIATES
 CIVIL ENGINEERS
 RIVERSIDE, CALIFORNIA
 APPROVED BY: *[Signature]* DATE
 R.E. No. 2876
 W.O. 77-46 FOR A.C. Weidly F.B. 10 22

REVISIONS	DATE	APP'D
Revised Street Line 6-8-81 ENW	6-8-81	<i>[Signature]</i>
Revised M.U. #1 11-12-80 ENW	11-12-80	<i>[Signature]</i>
Added TR 9419-2, 3-12-80 ENW	3-12-80	<i>[Signature]</i>

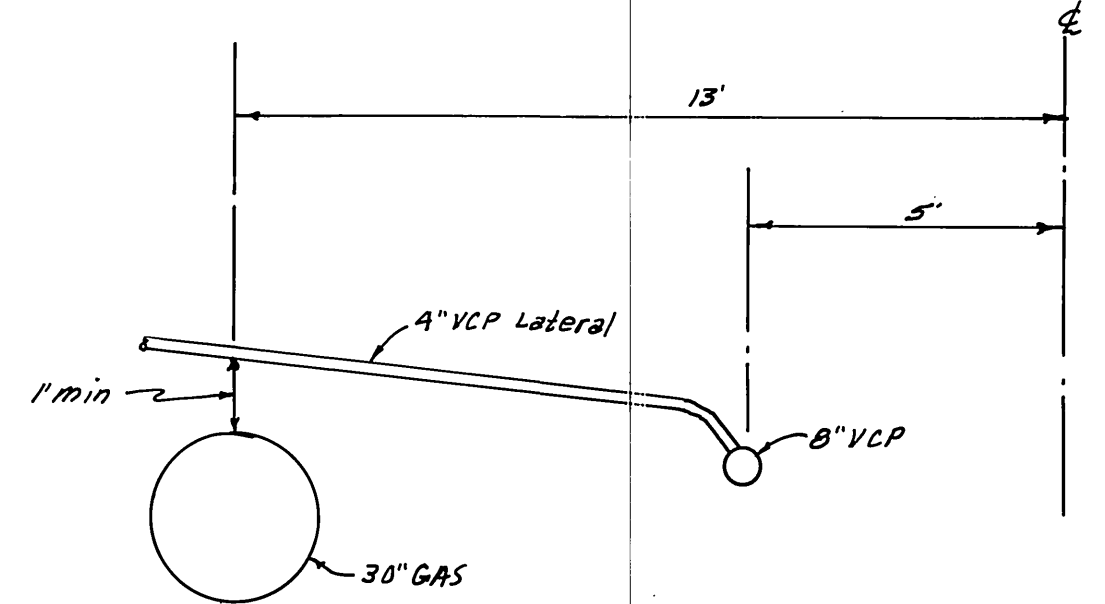
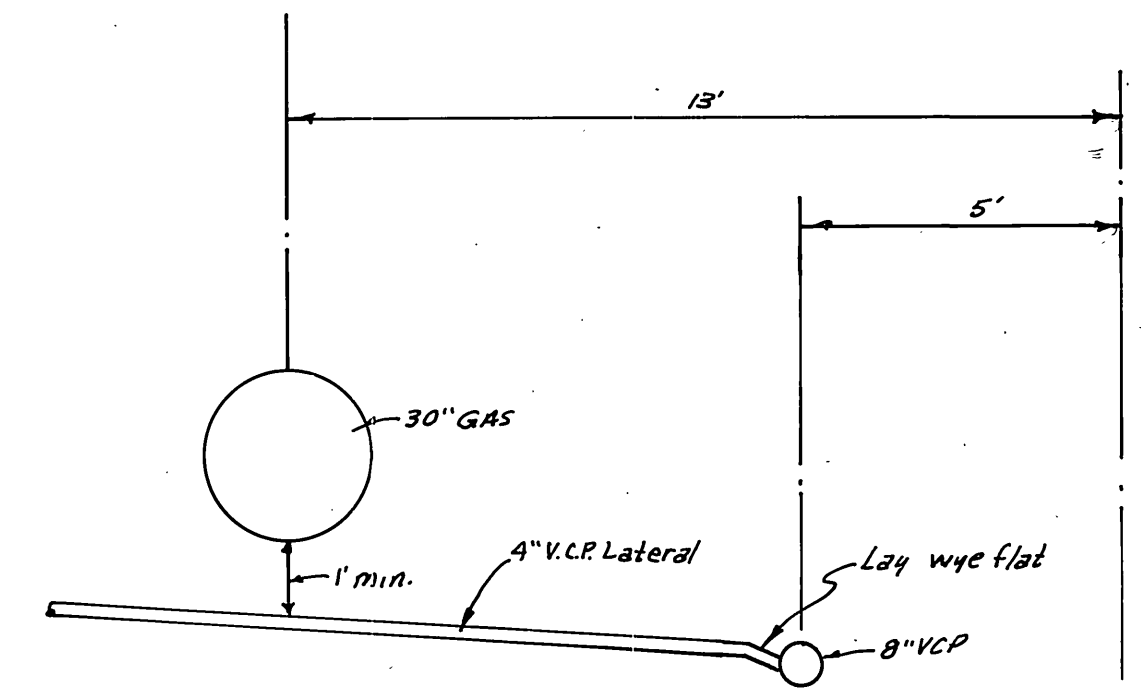
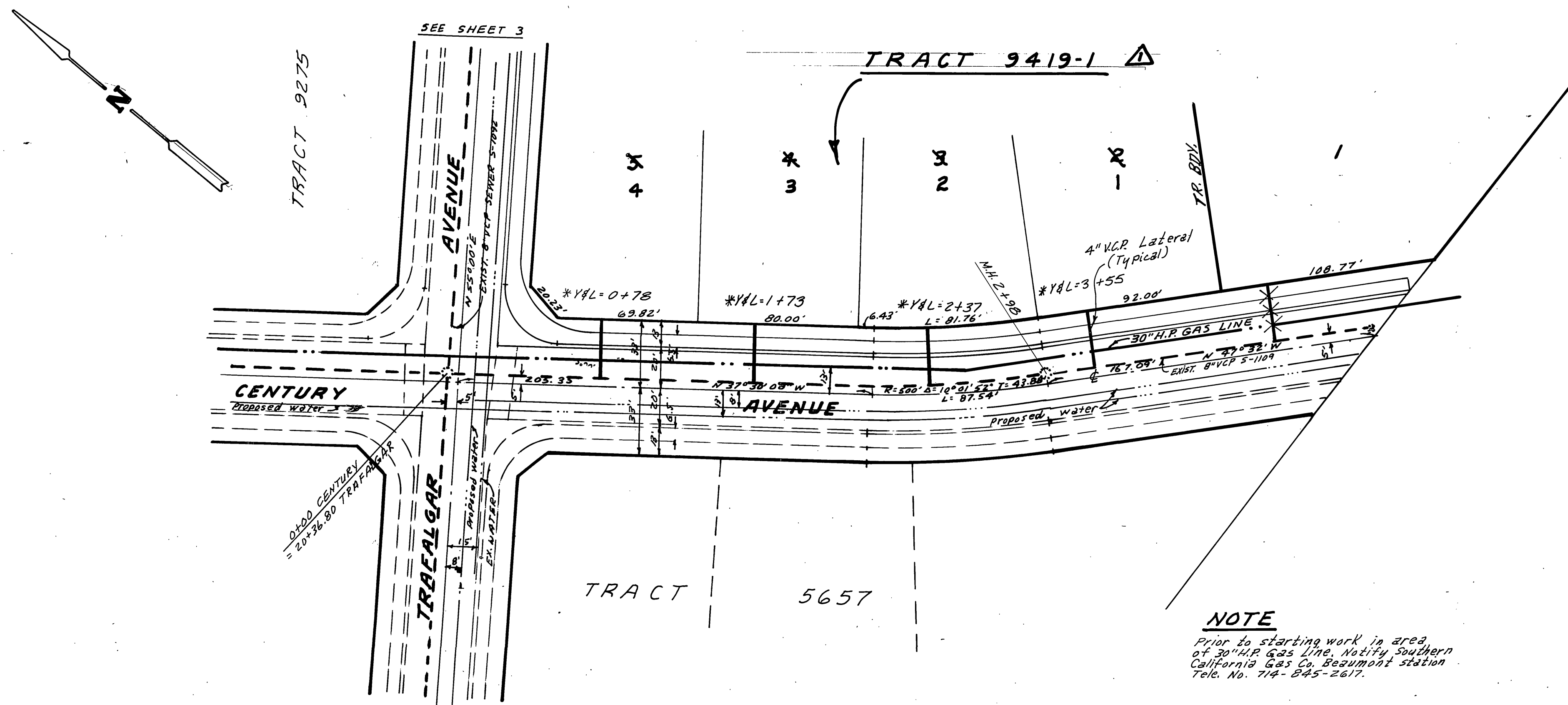
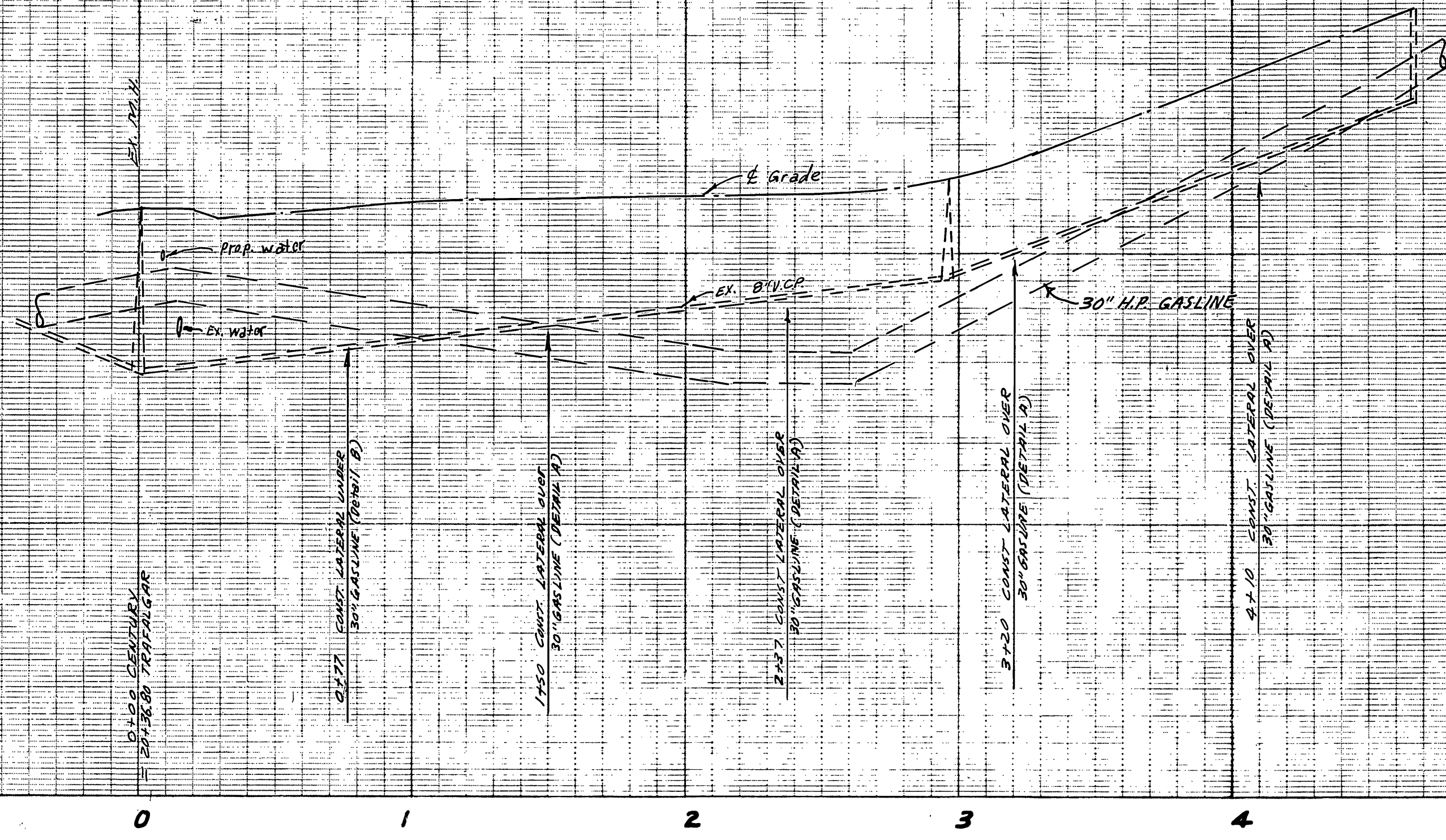
CITY OF RIVERSIDE, CALIFORNIA
 PUBLIC WORKS DEPARTMENT
 APPROVED BY: *[Signature]* DATE 12-5-77
 PRINCIPAL ENGINEER
 PARK DEPARTMENT
 TRAFFIC DIVISION
 CHIEF PUB. WKS. ENGR.

SEWER PLAN AND PROFILE		ACCOUNT No.
TRAFALGAR AVENUE		S-1130
TRACT 9419		SHEET 2 OF 7
SCALE: 1" = 40' Horiz. - 1" = 8' Vert.		77-46-B



BENCH MARK: Elev. 1136.542
 C/R B.M. No. G-7-C RE 1411 in curb return S.E. corner Chicago and Alessandro.

CITY OF RIVERSIDE DOMESTIC SYSTEM APPROVED BY: <i>Walter J. Hahn</i> 6-16-77 CHIEF UTILITIES ENGINEER, WATER, DATE	ALBERT A. WEBB ASSOCIATES CIVIL ENGINEERS RIVERSIDE, CALIFORNIA APPROVED BY: <i>Earl N. Webb</i> DATE: <i>5/17/77</i> R.E. No. 9876	CITY OF RIVERSIDE, CALIFORNIA PUBLIC WORKS DEPARTMENT APPROVED BY: <i>Walter J. Hahn</i> PRINCIPAL ENGINEER PARK DEPARTMENT TRAFFIC DIVISION CHIEF PUB. WKS. ENGR.	APPROVED BY: <i>Walter J. Hahn</i> DIRECTOR OF PUBLIC WORKS DATE: <i>10-5-77</i>	SEWER PLAN AND PROFILE TRAFALGAR AVENUE TRACT 9419	ACCOUNT No. DRAWING NUMBER S-1130 SHEET 3 OF 7 77-46-B
	W.D. 77-46 FOR: A.C. Navedly F.B. 1022	DESIGNED BY: <i>REL</i> DRAWN BY: <i>REL</i> CHECKED BY:	REVISIONS APPR. DATE Added TR 9419-2, 3-12-80 ENW Added TR 9419-1, 3-12-80 ENW	DATE: <i>10-5-77</i>	SCALE: 1" = 40' Horiz. - 1" = 8' Vert.



NOTE
 Prior to starting work in area of 30" H.P. Gas Line, notify Southern California Gas Co. Beaumont station. Tele. No. 714-845-2617.

DETAIL B
 4" LATERAL CONST. UNDER 30" GAS LINE
 TRACT 9419-1, LOT 4

DETAIL A
 4" LATERAL CONST. OVER 30" GAS LINE
 TRACT 9419-1, LOTS 1-3
 TRACT 9419, LOT 1

BENCH MARK: Elev. 1136.542
 C.R. B.M. No. G-7-C RE. 1011 in curb return S.E. corner Chicago and Alessandro.

APPROVED BY: *R.V. Lomona* 7-5-77
 SOUTHERN CALIF. GAS CO. DATE
 APPROVED BY: *Walter Joffe* 6-16-77
 CHIEF UTILITIES ENGINEER, WATER, DATE

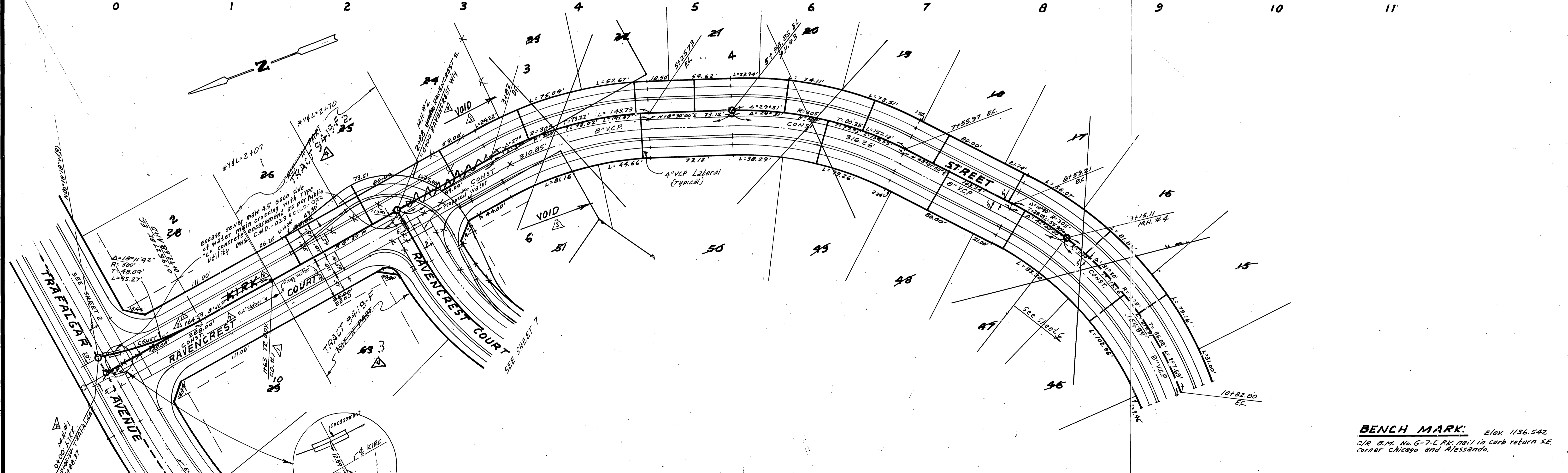
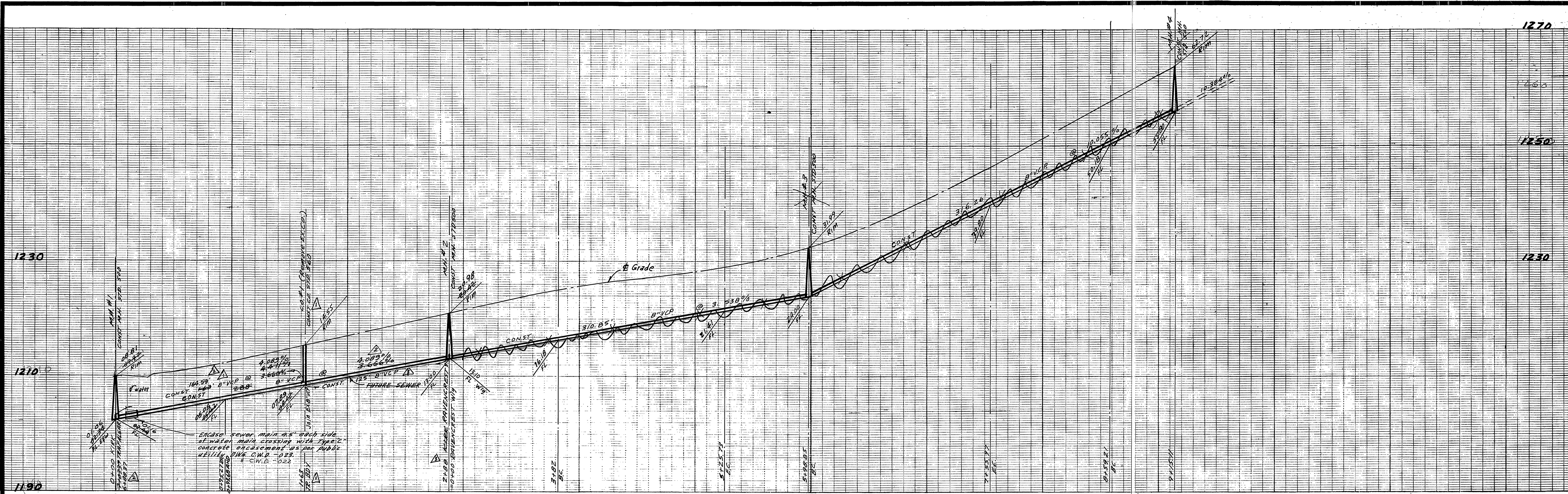
ALBERT A. WEBB ASSOCIATES
 CIVIL ENGINEERS
 RIVERSIDE, CALIFORNIA
 APPROVED BY: *Ernest Miller* DATE *5/6/77*
 R.E. No. 9876

DESIGNED BY: *BEL* DRAWN BY: *BEL* CHECKED BY: _____
 W.D. 77-46 FOR: A.C. Nojediy F.B. 1022

CITY OF RIVERSIDE, CALIFORNIA
 PUBLIC WORKS DEPARTMENT
 APPROVED BY: _____ DATE _____
 PRINCIPAL ENGINEER
 PARK DEPARTMENT
 TRAFFIC DIVISION
 CHIEF PUB. WKS. ENGR. DATE: 10-5-77

SEWER PLAN AND PROFILE
 CENTURY AVENUE
 TRACT 9419
 SCALE: 1" = 40' Horiz. - 1" = 8' Vert.

ACCOUNT No. _____
 DRAWING NUMBER
S-1130
 SHEET 4 of 7
77-46-B



BENCH MARK: Elev 1136.542
 C.R. B.M. No. G-7-C R.K. nail in curb return SE corner Chicago and Alessandro.

CITY OF RIVERSIDE DOMESTIC SYSTEM
 APPROVED BY: *[Signature]* DATE 11/10/80
 Chief Utilities Engineer, Water, Date

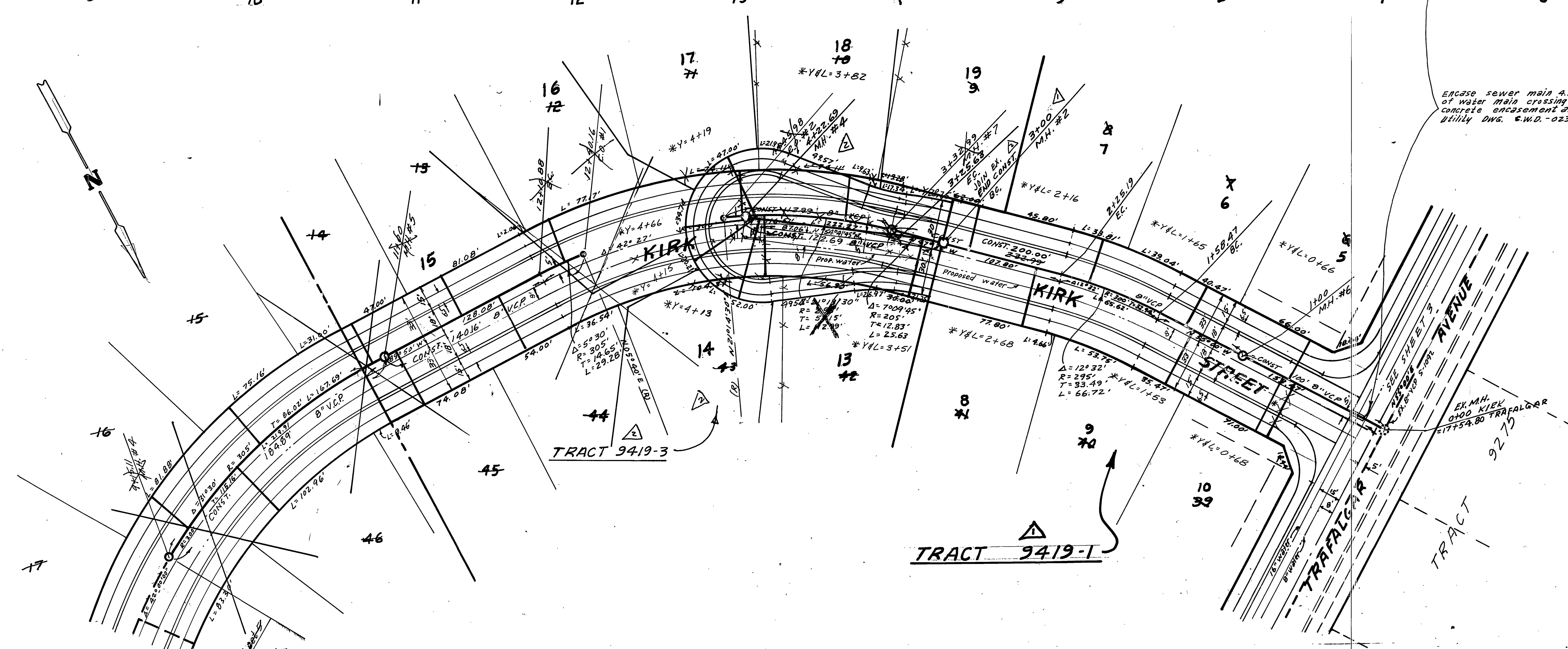
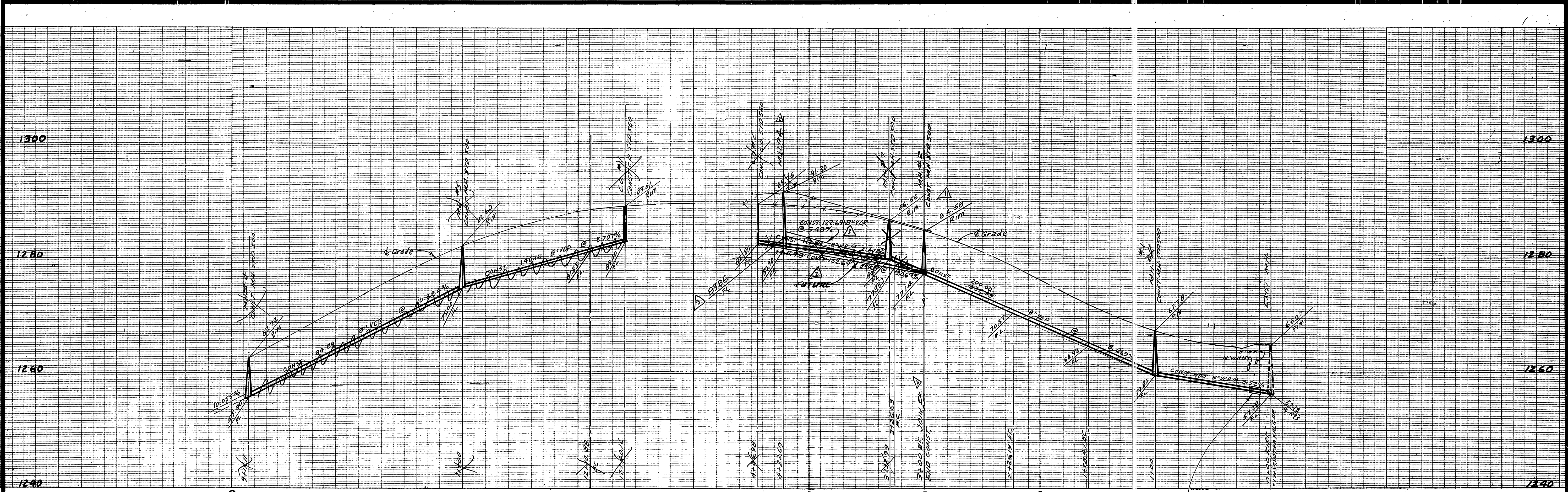
ALBERT A. WEBB ASSOCIATES
 CIVIL ENGINEERS
 RIVERSIDE, CALIFORNIA
 APPROVED BY: *[Signature]* DATE 5/1/77
 R.E. No. 9976
 W.D. 77-46 FOR: A.C. Nejedly F.B. 1022

MARK	REVISIONS	APPR.	DATE
▲	Added TR 9419-F at Nos. 8120/02 BE		
▲	Added Const for Tr. 9419-3		
▲	Relocated M.H.#1 11-12-80 ENW		
▲	Added Const for Tr. 9419-2, 3-10-80 ENW		

CITY OF RIVERSIDE, CALIFORNIA PUBLIC WORKS DEPARTMENT
 APPROVED BY: *[Signature]* DATE 10-5-77
 PRINCIPAL ENGINEER
 PARK DEPARTMENT
 TRAFFIC DIVISION
 CHIEF PUB. WKS. ENGR.

SEWER PLAN AND PROFILE
 KIRK STREET
 RAVENCREST COURT
 TRACT 9419
 SCALE: 1" = 40' Horiz. - 1" = 8' Vert.

INDEXED R.R.
 ACCOUNT No. 5-1130
 DRAWING NUMBER
 SHEET 5 OF 7
 77-46-B

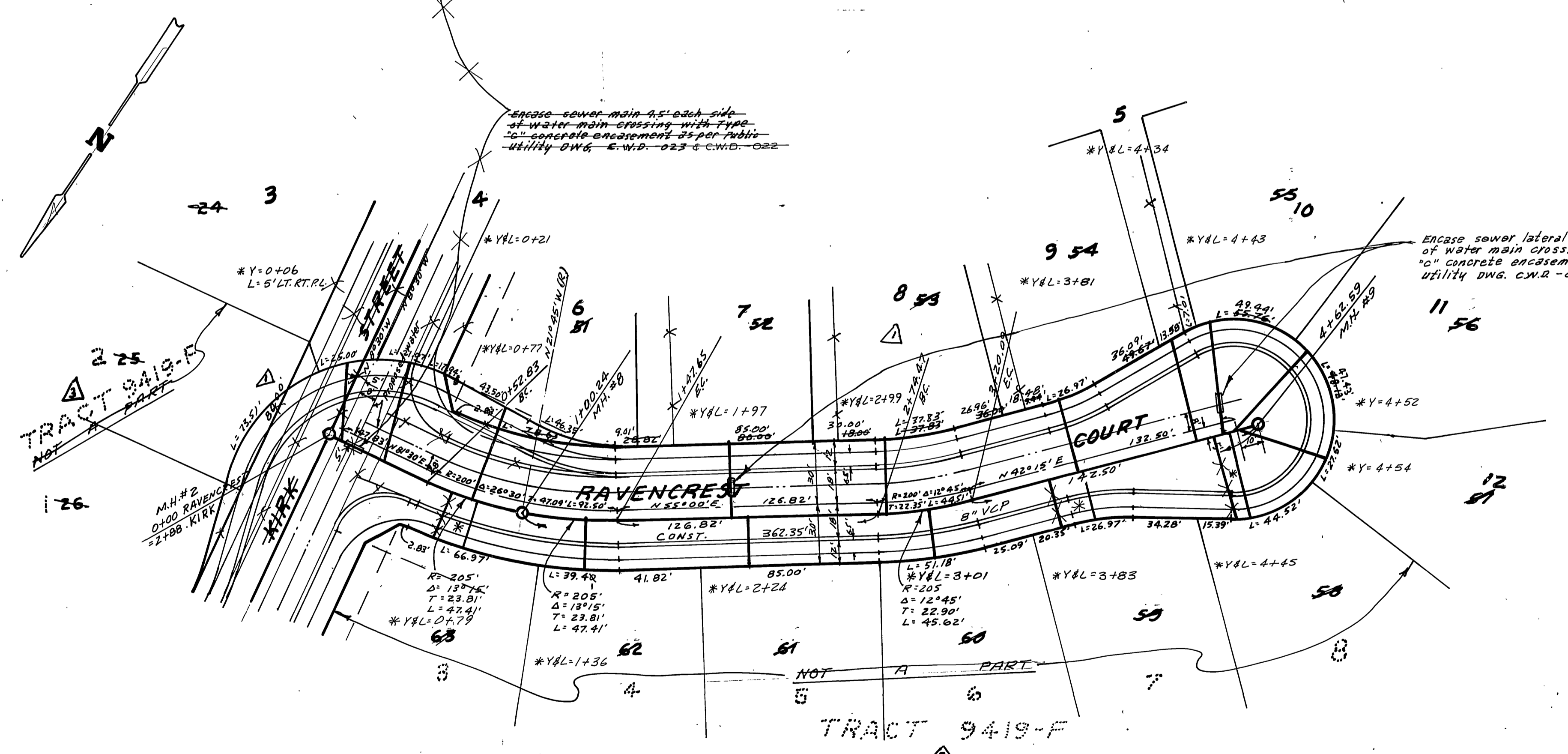
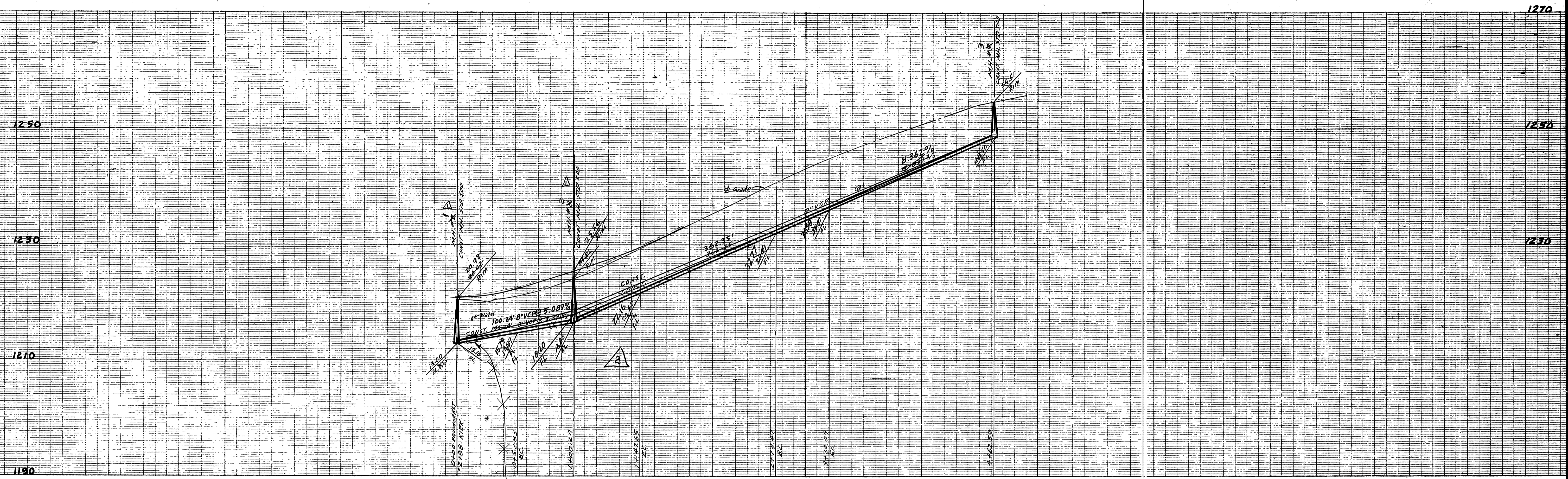


ENCASE sewer main 4.5' each side of water main crossing with type "C" concrete encasement as per Public Utility DWS. S.W.D. - 023.4 C.W.D. - 022.

BENCH MARK: Elev. 1136.542
 O/R B.M. No G-7-C R.C. nail in curb return S.E. corner Chicago and Alessandro.

*As built 11/86 TC

CITY OF RIVERSIDE DOMESTIC SYSTEM APPROVED BY: <i>Wally J. Miller</i> 6-16-77 CHIEF UTILITIES ENGINEER, WATER, DATE	ALBERT A. WEBB ASSOCIATES CIVIL ENGINEERS RIVERSIDE, CALIFORNIA APPROVED BY: <i>Wally J. Miller</i> DATE: 5/2/77 R.E. No. 2876	CITY OF RIVERSIDE, CALIFORNIA PUBLIC WORKS DEPARTMENT APPROVED BY: <i>Wally J. Miller</i> DATE: 10-7-77 DIRECTOR OF PUBLIC WORKS	SEWER PLAN AND PROFILE KIRK STREET TRACT 9419	ACCOUNT No. 5-1130 SHEET 6 OF 7 INDEXED RR
	W.D. 77-46 FOR A.C. Nojaily F.B. 102-	DESIGNED BY: <i>SEL</i> DRAWN BY: <i>SEL</i> CHECKED BY:	TRAFFIC DIVISION CHIEF PUB. WKS. ENGR.	SCALE: 1" = 40' Horiz. - 1" = 8' Vert.



Encase sewer lateral 4.5' each side of water main crossing with Type "C" concrete encasement as per Public Utility DWG. C.W.D. - 023 & C.W.D. - 022

BENCH MARK: Elev 1136.542
C.R. B.M. No. G-7-C PK. 1011 in curb return S.E. corner Chicago and Alessandro.

* As built 11/86 TE

CITY OF RIVERSIDE DOMESTIC SYSTEM APPROVED BY: <i>Wesley Hefner</i> CHIEF UTILITIES ENGINEER, WATER, DATE 6-16-77	ALBERT A. WEBB ASSOCIATES CIVIL ENGINEERS RIVERSIDE, CALIFORNIA APPROVED BY: <i>Albert A. Webb</i> DATE <i>5/17/83</i> R.E. No. 2876	CITY OF RIVERSIDE, CALIFORNIA PUBLIC WORKS DEPARTMENT APPROVED BY: <i>[Signature]</i> PRINCIPAL ENGINEER PARK DEPARTMENT TRAFFIC DIVISION CHIEF PUB. WKS. ENGR. DATE 10-5-77	SEWER PLAN AND PROFILE RAVENCREST COURT TRACT 9419 SCALE: 1" = 40' Horiz. - 1" = 8' Vert.	ACCOUNT No. DRAWING NUMBER 5-1130 SHEET 7 OF 7 77-46-B
	W.O. 77-46 FOR A.C. Nevedly F.S. 1022 DESIGNED BY: <i>BEL</i> DRAWN BY: <i>BEL</i> CHECKED BY:	REVISIONS 1. Added TRACT 9419-F 8-29-83 BE 2. Revised grade because of Pack 3-2-83 3. Added outline of Tract 9419-F 8-29-83 BE	DATE 10-5-77	INDEXED 00