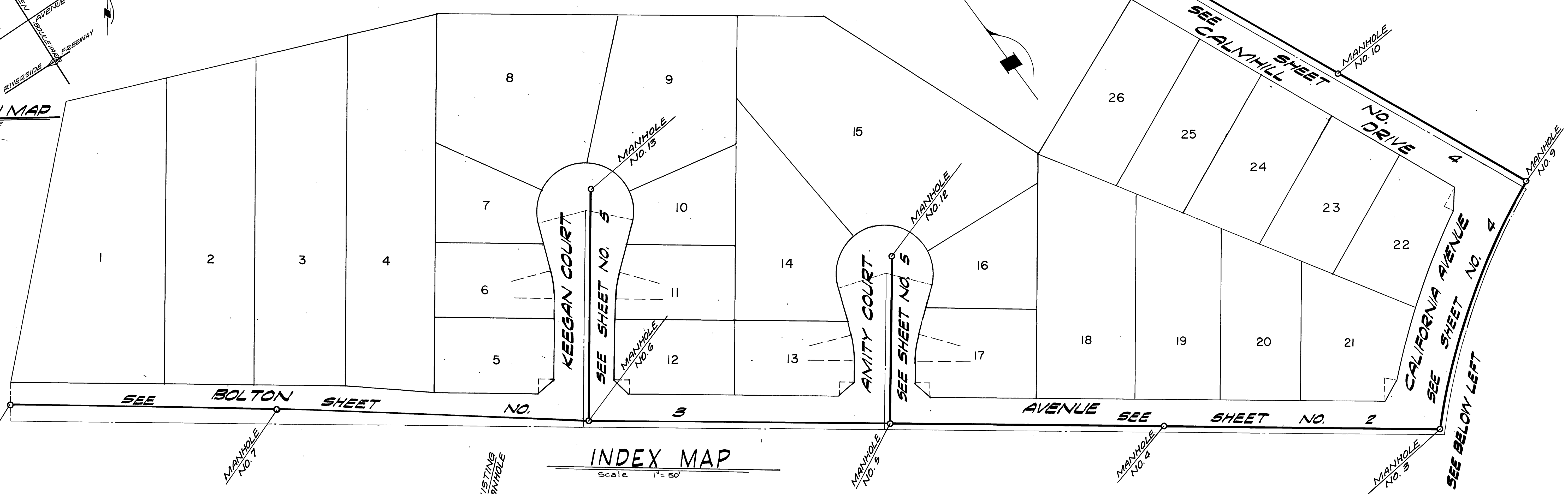
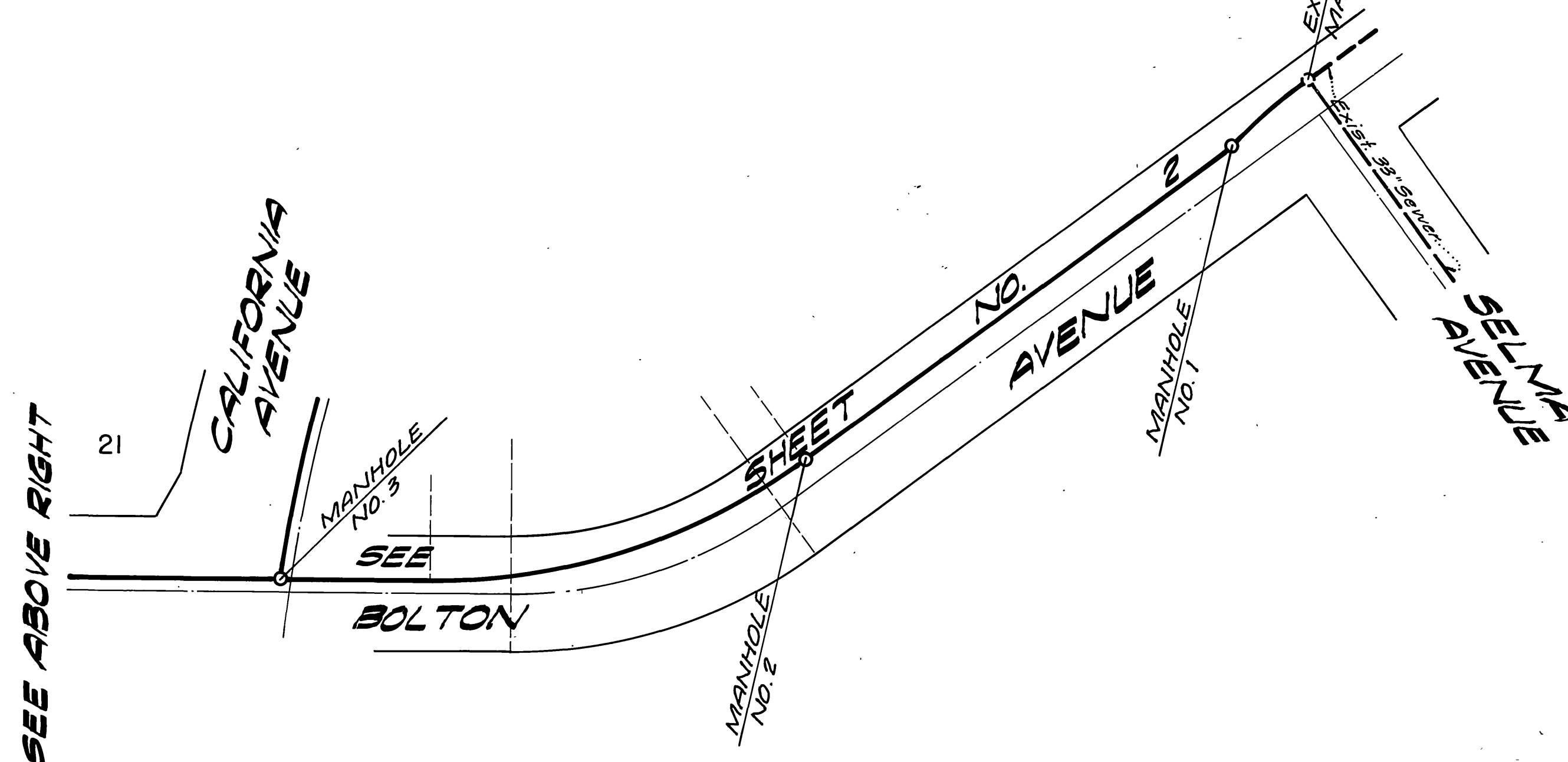


**LOCATION MAP**  
NO SCALE



**INDEX MAP**  
Scale 1" = 50'



**CONSTRUCTION NOTES:**

- 1 Construct 4" V.C.R. Lateral to property line.
- 2 Construct 8" V.C.R. Sewer Line.
- 3 Construct Manhole per City Standard No. 500.
- 4 Construct 8" x 4" Wye for future use. (Plug 4" Opening)
- 5 Construct 8" V.C.R. Stub and Plug.

**GENERAL NOTES:**

1. The private engineer signing these plans is responsible for the accuracy and acceptability of the work hereon. In the event of discrepancies arising during construction, the private engineer signing these plans shall be responsible for determining an acceptable solution and revising the plans for approval by the City.
2. Construction shall be in accordance with the Standard Specifications for Public Works Construction 1976 Edition and per City of Riverside Standard Drawings.
3. It shall be the responsibility of the Contractor to clear the Right of Way in accordance with the provisions of law as it affects each utility including irrigation lines and appurtenances and at no cost to the City.
4. Pipe shall be bedded per Case I, Standard Drawing No. 452, unless otherwise specified on the plans.
5. Location of Wyes, Laterals and Saddles to be determined in the field at the direction of the owner.
6. All stubs and laterals to be constructed in accordance with Standard Drawing No. 562. Stubs shall be plugged and capped.
7. Manhole frames and covers to be set as noted in profile by Sewer Contractor after final paving of streets.
8. Laterals are to be 4" V.C.R. and extended to property line.
9. Prior to construction of the Sewer. The Contractor is to expose the existing sewer and contact the Engineer for verification of existing location and elevation.
10. Plugs shall be installed and will remain in place where the new Sewer connects with the existing Sewer until such time as the new sewer is accepted by the City.

**NOTICE TO CONTRACTOR:**

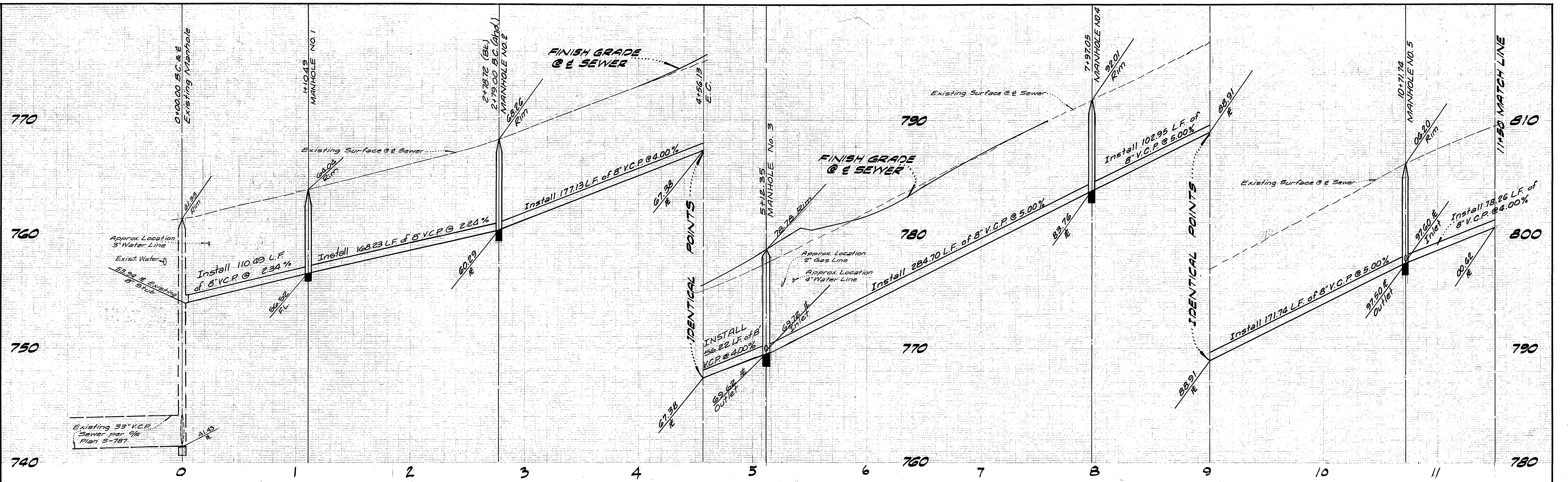
The existence and location of underground utility pipes or structures shown on these plans are obtained by a search of the available records. To the best of our knowledge there are no existing utilities except as shown on these plans. The Contractor is required to take due precautionary measures to protect the utility lines shown and any other lines not of record or not shown on these plans.

**BENCH MARK:**

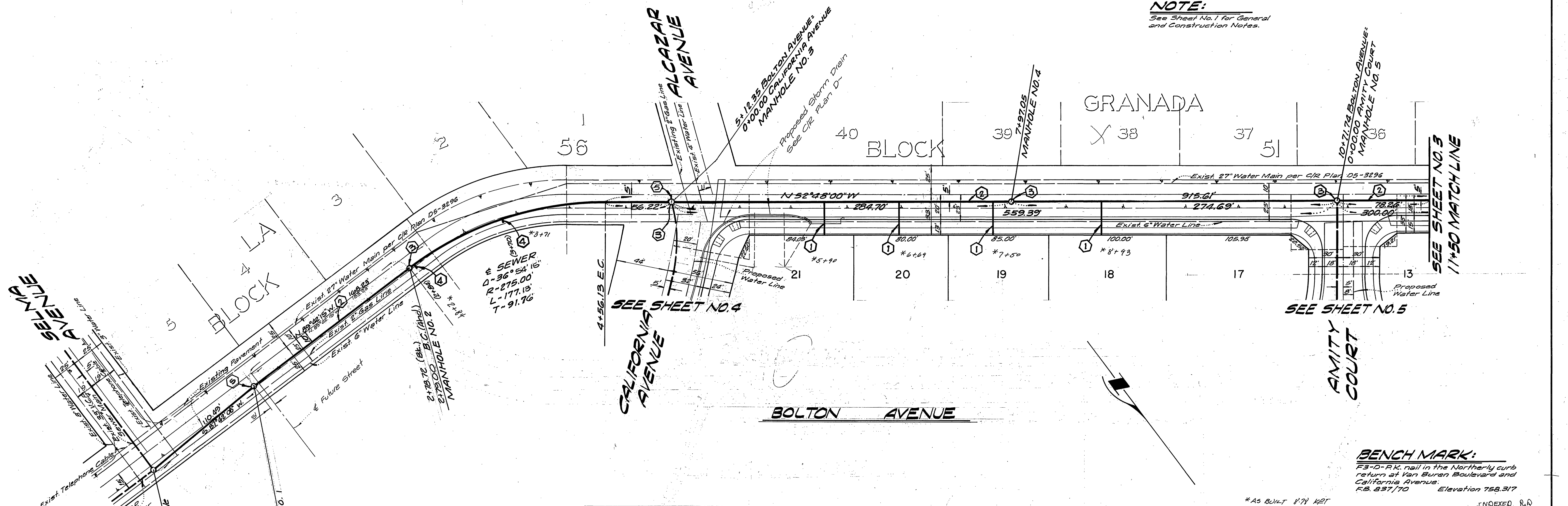
F3-D - R.K. nail in the Northernly curb return at Van Buren Boulevard and California Avenue. E.S. 637/70 Elevation 758.317

<p>CITY OF RIVERSIDE DOMESTIC SYSTEM</p> <p>Approved by: <i>Fred Lantz</i> 8-5-77 Chief Utilities Engineer - Water</p>	<p><b>KICAK WAINSCOTT &amp; ASSOCIATES</b> CIVIL ENGINEERS GRAND TERRACE, CALIFORNIA</p> <p>APPROVED BY: <i>L.A. Waincott</i> DATE 4-20-77 R.G.E. 16056</p>	<p>CITY OF RIVERSIDE, CALIFORNIA DEPARTMENT OF PUBLIC WORKS</p> <p>APPROVED BY: <i>William D. Hansen</i> OFFICE ENGINEER DATE 9/26/77 PARK DEPARTMENT TRAFFIC DIVISION DIRECTOR OF PUBLIC WORKS ASSISTANT CITY ENGINEER</p>	<p><b>SEWER PLAN &amp; PROFILE</b></p> <p><b>TRACT NO. 8492</b></p> <p><b>INDEX SHEET</b></p> <p>SCALE: As Shown</p>	<p>INDEXED R.R. PROJECT NO.</p> <p><b>5-1131</b></p> <p>SHEET 1 OF 5</p> <p>FILE NO. 021-01-B</p>
<p>* AS BUILT 8-78 RRT</p>				





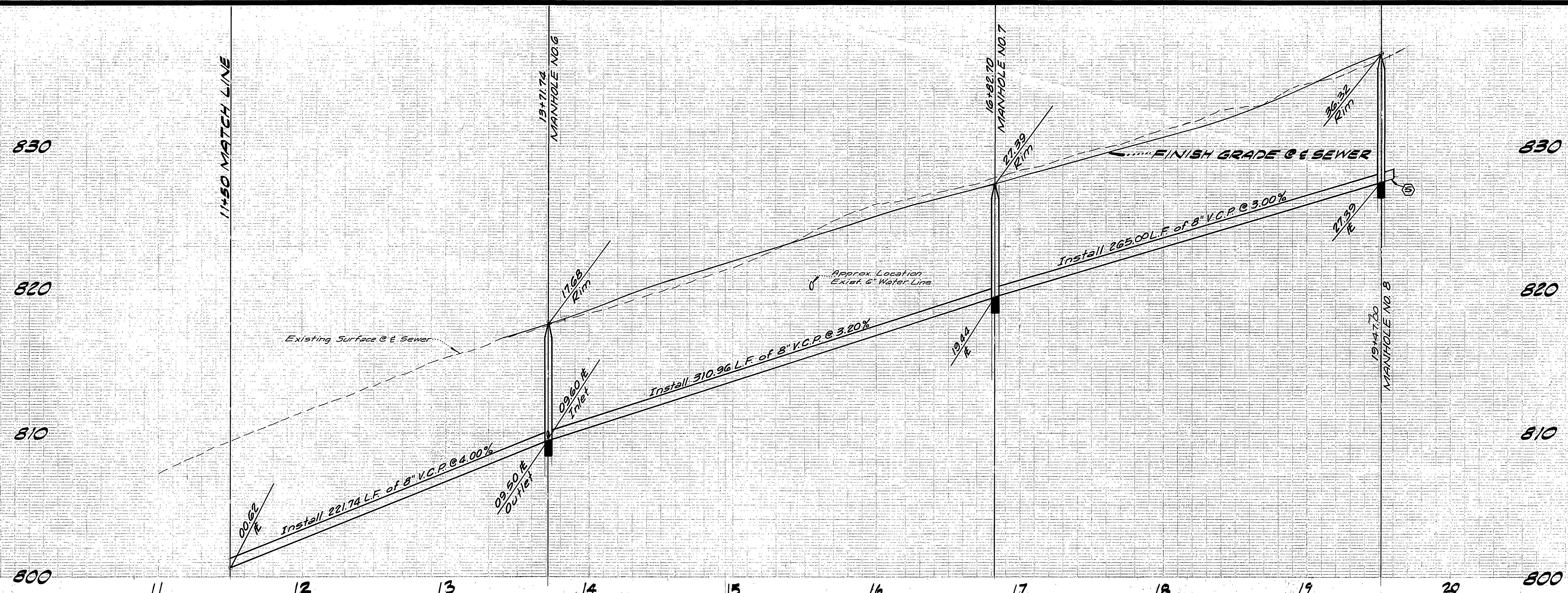
**NOTE:**  
See Sheet No. 1 for General and Construction Notes.



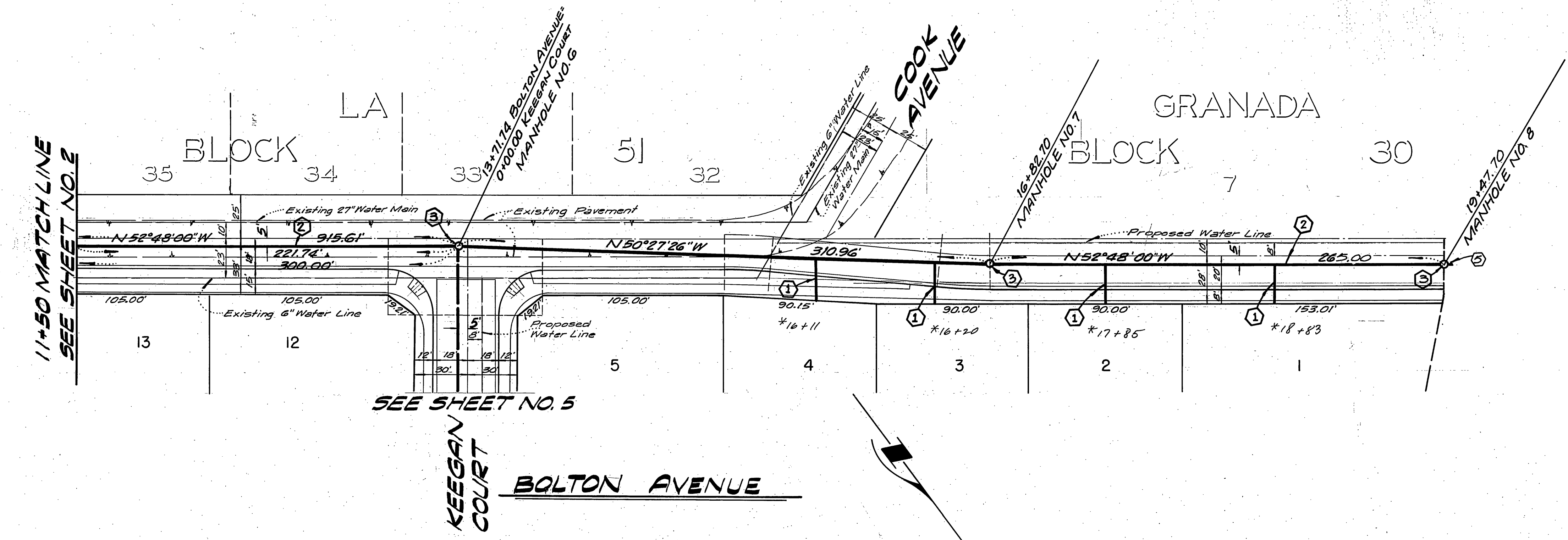
**BENCH MARK:**  
FB-D-RK nail in the Northernly curb return at Van Buren Boulevard and California Avenue.  
Elevation 758.317  
FB 837/70

CITY OF RIVERSIDE DOMESTIC SYSTEM Approved by: <i>Fred Kautz</i> 8-5-77 Chief Utilities Engineer - Water	<b>KICAK WAINSCOTT &amp; ASSOCIATES</b> CIVIL ENGINEERS GRAND TERRACE, CALIFORNIA Approved by: <i>L.A. Waincott</i> DATE 4-20-77 R.C.E. 14056		CITY OF RIVERSIDE, CALIFORNIA DEPARTMENT OF PUBLIC WORKS Approved by: <i>William D. Gardner</i> DIRECTOR OF PUBLIC WORKS DATE 9/26/77		<b>SEWER PLAN &amp; PROFILE</b> TRACT 8492 BOLTON AVENUE	PROJECT NO. <b>5-1131</b> SHEET <b>2</b> OF <b>5</b> FILE NO. 021-01-B
	W.O. 021-01 FOR B&L Development	DESIGNED BY <i>R.H.</i> DRAWN BY <i>R.H.</i> CHECKED BY <i>R.H.</i>	SCALE HORZ 1"=40' VERT 1"=4'	* AS BUILT 8/74 H2T	INDEXED R.D.	





**NOTE:**  
See Sheet No. 1 for General and Construction Notes



**BENCH MARK:**  
F3-D-PK nail in the Northern curb return at Van Buren Boulevard and California Avenue.  
F.B. 837170 Elevation 758.317

CITY OF RIVERSIDE  
DOMESTIC SYSTEM  
Approved by: *Red Kant* 8-5-77  
Chief Utilities Engineer - Water Date

**KICAK WAINSCOTT & ASSOCIATES**  
CIVIL ENGINEERS  
GRAND TERRACE, CALIFORNIA  
APPROVED BY: *L.A. Waincott* DATE 4-20-77  
R.C.E. 16056

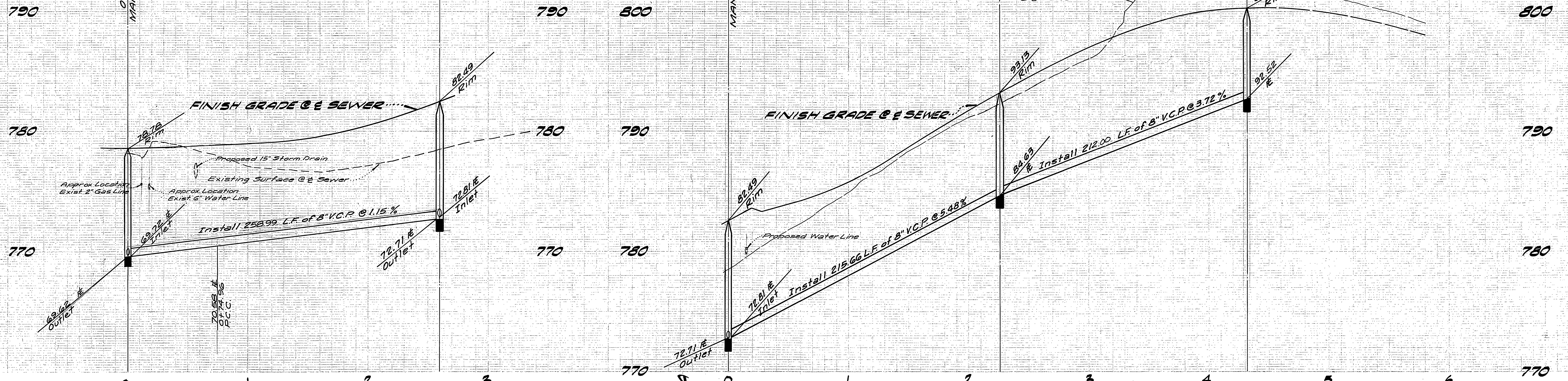
MARK REVISIONS APPR DATE  
DESIGNED BY: P.H. DRAWN BY: P.H. CHECKED BY:

CITY OF RIVERSIDE, CALIFORNIA  
DEPARTMENT OF PUBLIC WORKS  
APPROVED BY: *William S. Hansen*  
DIRECTOR OF PUBLIC WORKS  
DATE 9/26/77

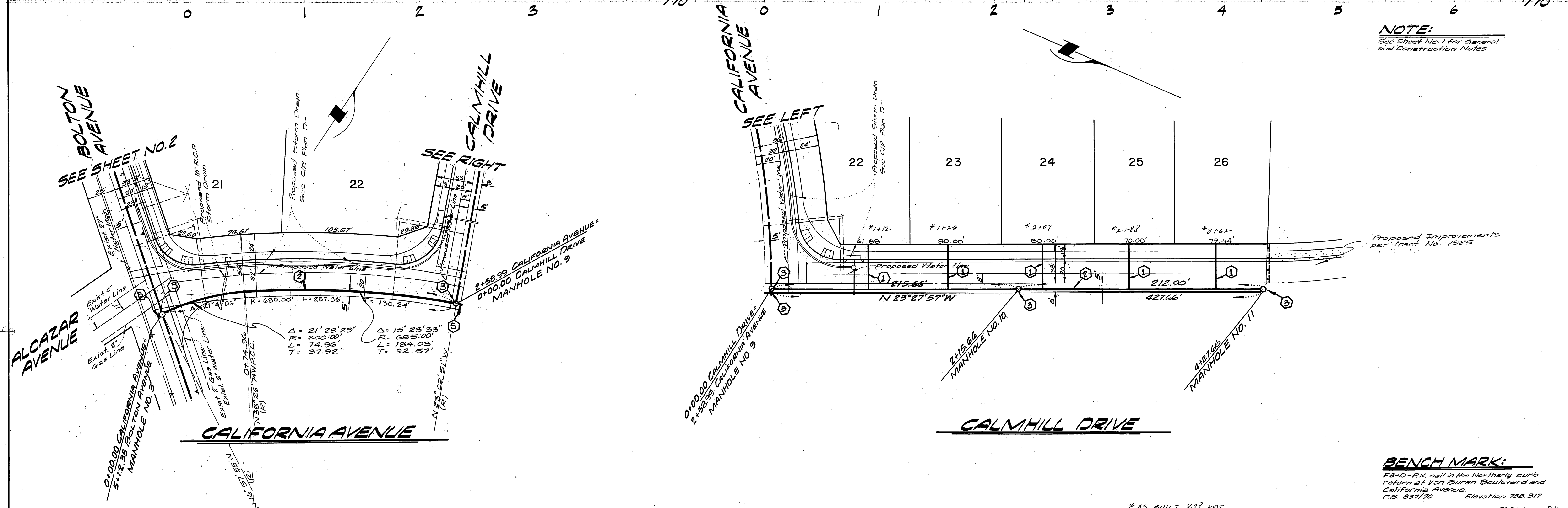
**SEWER PLAN & PROFILE**  
TRACT 8492  
BOLTON AVENUE  
SCALE: HORIZ 1"=40' VERT 1"=4'

PROJECT NO. 5-1131  
SHEET 3 OF 5  
FILE NO. OZI-DI-B





**NOTE:**  
See Sheet No. 1 for General and Construction Notes.



$\Delta = 21^\circ 28' 29"$   
 $R = 200.00'$   
 $L = 74.96'$   
 $T = 37.92'$

$\Delta = 15^\circ 23' 33"$   
 $R = 685.00'$   
 $L = 184.03'$   
 $T = 92.57'$

**BENCH MARK:**  
F3-D-PK nail in the Northernly curb return at Van Buren Boulevard and California Avenue. Elevation 758.317 F.B. 837/70

CITY OF RIVERSIDE  
DOMESTIC SYSTEM  
Approved by: *Red Cant*  
Chief Utilities Engineer-Water Date 8-5-77

**KICAK WAINSCOTT & ASSOCIATES**  
CIVIL ENGINEERS  
GRAND TERRACE, CALIFORNIA  
APPROVED BY: *L.A. Waincott* DATE 4-20-77  
R.C.E. 16056

MARK REVISIONS APPR DATE

CITY OF RIVERSIDE, CALIFORNIA  
DEPARTMENT OF PUBLIC WORKS  
APPROVED BY: *William D. Hansen*  
DIRECTOR OF PUBLIC WORKS  
DATE 9/26/77

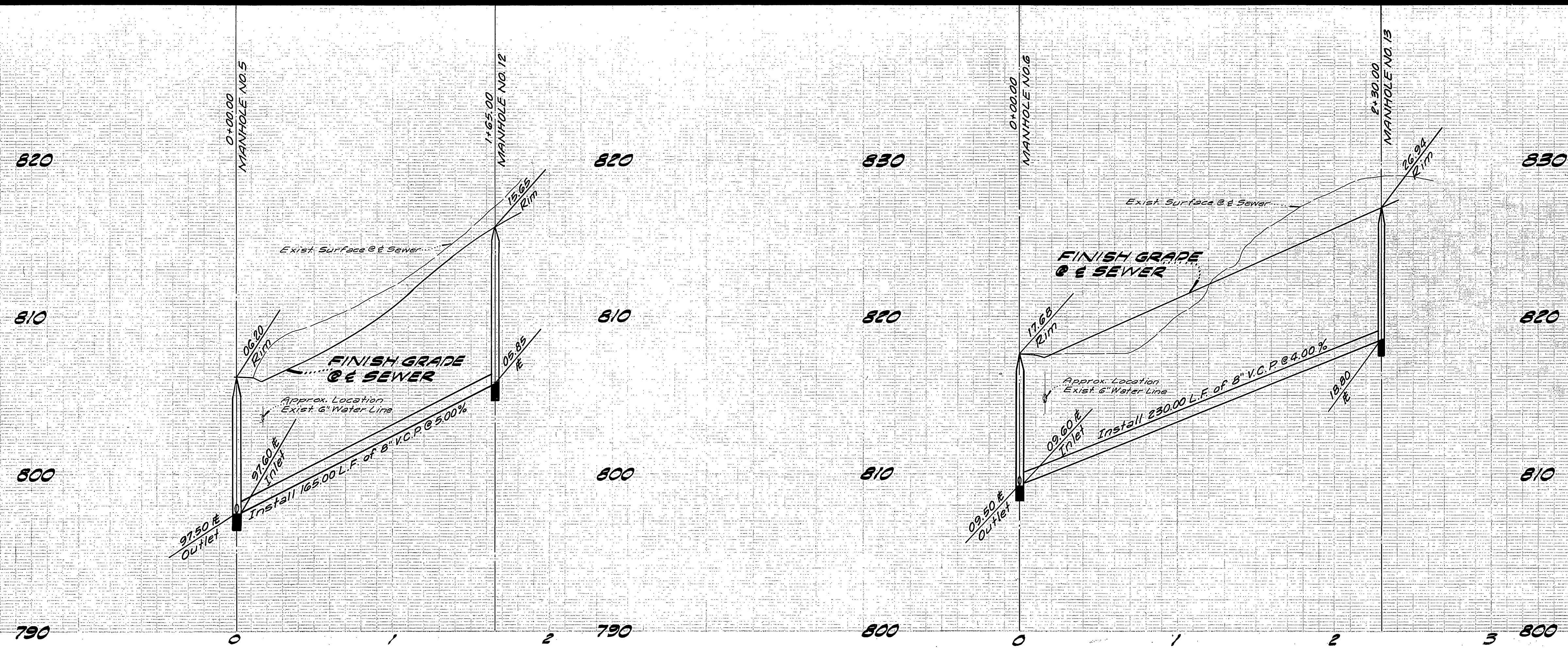
**SEWER PLAN & PROFILE**  
TRACT 8492  
CALIFORNIA AVENUE  
CALMHILL DRIVE  
SCALE HORZ 1"=40' VERT 1"=4'

PROJECT NO. 5-1131  
SHEET 4 OF 5  
FILE NO. 021-01-13

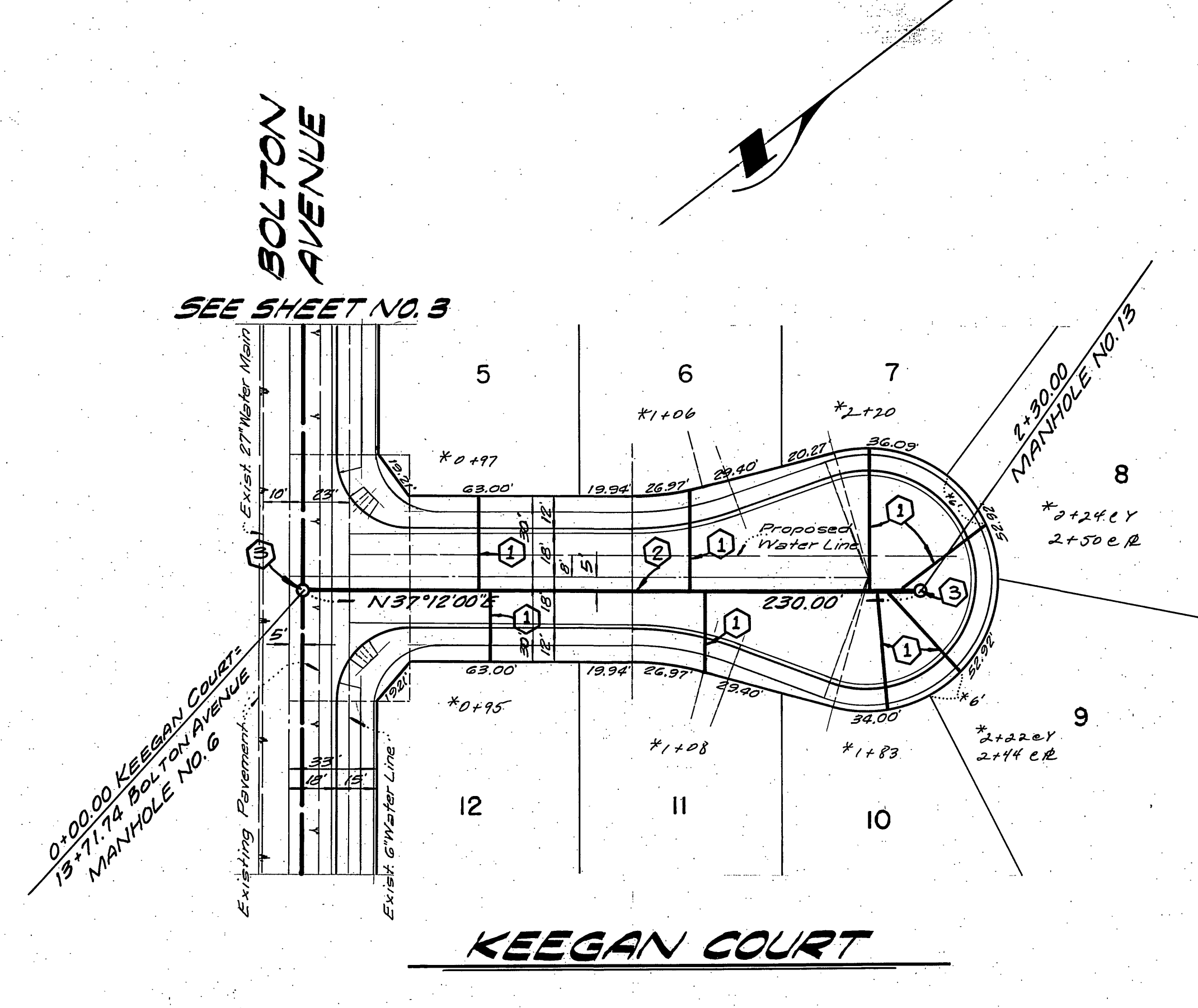
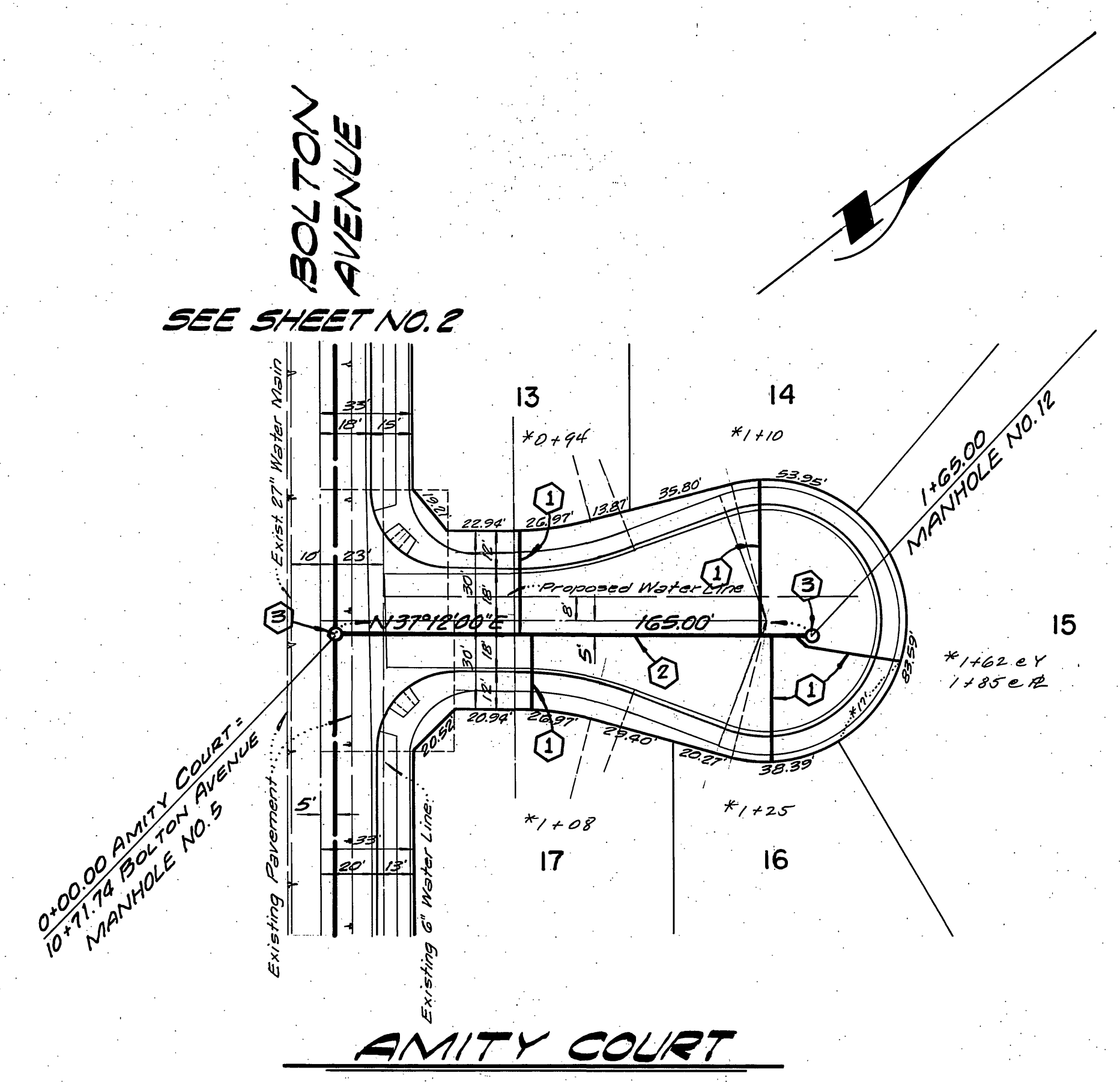
\*AS BUILT 877 RPT

INDEXED R.R.





**NOTE:**  
See Sheet No. 1 For General and Construction Notes.



**BENCH MARK:**  
F3-D-RK nail in the Northerly curb return at Van Buren Boulevard and California Avenue. F.B. 837/70 Elevation 758.317

Approved by:  
*Fred Kuntz*  
Chief Utilities Engineer-Water  
Date 8-5-77

**KICAK WAINSCOTT & ASSOCIATES**  
CIVIL ENGINEERS  
GRAND TERRACE, CALIFORNIA  
APPROVED BY *L.D. Waincott* DATE 4-20-77  
R.C.E. 16056

MARK	REVISIONS	APPR.	DATE

CITY OF RIVERSIDE, CALIFORNIA  
DEPARTMENT OF PUBLIC WORKS  
APPROVED BY: *William S. Hansen*  
DIRECTOR OF PUBLIC WORKS  
DATE 8/26/77

**SEWER PLAN & PROFILE**  
**TRACT NO 8492**  
**AMITY COURT**  
**KEEGAN COURT**

PROJECT NO. 5-1131  
SHEET 5 OF 5  
FILE NO. 021-01-B

SCALE: HORIZ. 1"=40' VERT. 1"=4'