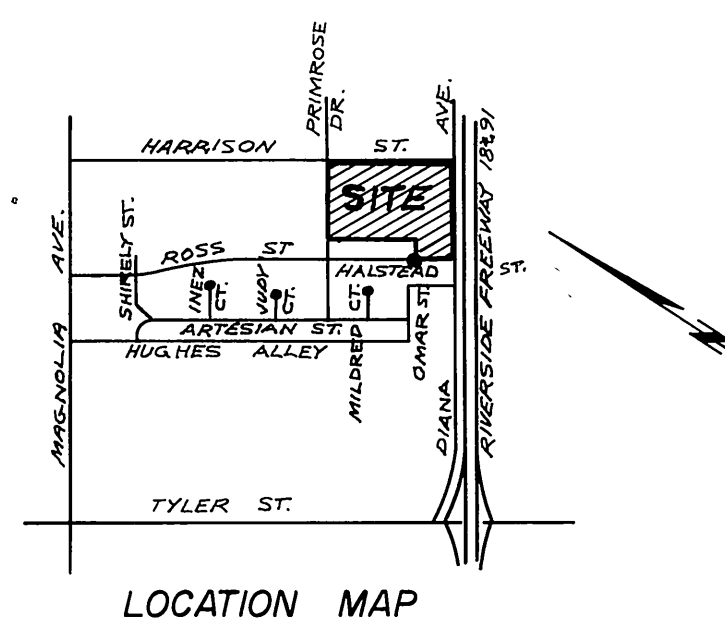


INDEX MAP
NO SCALE



LOCATION MAP

GENERAL NOTES

1. THE PRIVATE ENGINEER SIGNING THESE PLANS IS RESPONSIBLE FOR THE ACCURACY AND ACCEPTABILITY OF THE WORK HEREON. IN THE EVENT OF DISCREPANCIES ARISING DURING CONSTRUCTION, THE PRIVATE ENGINEER SHALL BE RESPONSIBLE FOR DETERMINING AN ACCEPTABLE SOLUTION AND REVISIONS THE PLANS FOR APPROVAL BY THE CITY.
2. CONSTRUCTION SHALL BE IN ACCORDANCE WITH STANDARD SPECIFICATIONS FOR PUBLIC WORKS CONSTRUCTION, 1976 EDITION, AND CITY OF RIVERSIDE STANDARD DRAWINGS.
3. IT SHALL BE THE RESPONSIBILITY OF THE CONTRACTOR TO CLEAR THE RIGHT OF WAY IN ACCORDANCE WITH THE PROVISIONS OF LAW AS IT AFFECTS EACH UTILITY INCLUDING IRRIGATION LINES AND APPURTENANCES AND AT NO COST TO THE CITY.
4. PIPE SHALL BE BEDDED PER CASE 1, STANDARD DRAWING NO. 452, UNLESS OTHERWISE SPECIFIED ON PLANS.
5. LOCATION OF WYES AND LATERALS TO BE DETERMINED AT THE DISCRETION OF THE OWNER, EXCEPT WHERE EXISTING WYES EXIST ON HARRISON.
6. ALL STUDIES AND LATERALS TO BE CONSTRUCTED IN ACCORDANCE WITH STANDARD DRAWING NO. 462; STUDS TO BE PLUGGED AND CAPPED, UNLESS OTHERWISE SPECIFIED ON PLANS.
7. THE SEWER CONTRACTOR SHALL ADJUST MANHOLES TO FINAL GRADE AFTER PAVING IS COMPLETED.
8. LATERALS ARE TO BE 4" AND EXTENDED TO THE PROPERTY LINE.
9. PRIOR TO CONSTRUCTION OF SEWER, CONTRACTOR IS TO EXPOSE EXISTING SEWER AND CONTACT THE ENGINEER FOR VERIFICATION OF EXISTING LOCATION AND ELEVATION.
10. A PLUG SHALL BE INSTALLED AND WILL REMAIN IN PLACE WHERE THE NEW SEWER CONNECTS WITH THE EXISTING SEWER UNTIL THE NEW SEWER IS ACCEPTED BY THE CITY.
11. CORE DRILLING TO BE USED WHEN INSTALLING SADDLES ON 18" V.C.P. IN HARRISON ST.

NOTICE TO CONTRACTOR

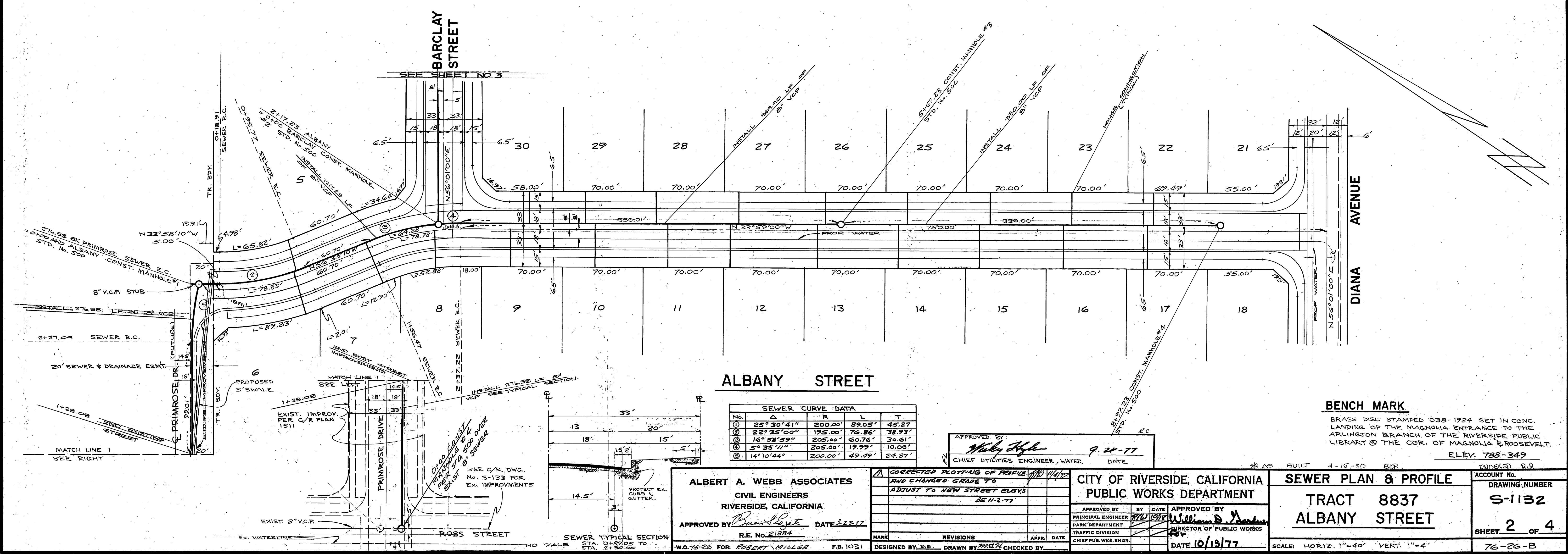
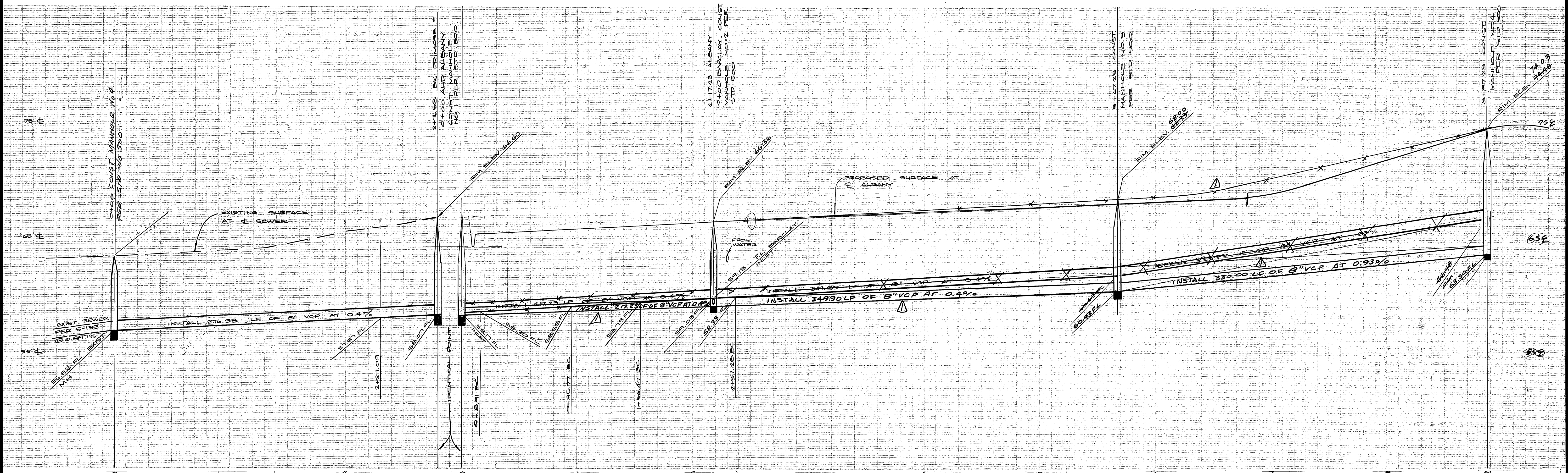
THE EXISTENCE AND LOCATION OF UNDERGROUND UTILITY PIPES OR STRUCTURES SHOWN ON THESE PLANS ARE OBTAINED BY A SEARCH OF THE AVAILABLE RECORDS TO THE BEST OF OUR KNOWLEDGE, THERE ARE NO EXISTING UTILITIES EXCEPT AS SHOWN ON THESE PLANS.

THE CONTRACTOR IS REQUIRED TO TAKE THE PRECAUTIONARY MEASURES TO PROTECT THE UTILITY LINES SHOWN AND ANY OTHER LINES NOT OF RECORD OR NOT SHOWN ON THESE PLANS.

BENCH MARK

BRASS DISC STAMPED 038-1924 SET IN CONC. LANDING OF THE MAGNOLIA ENTRANCE TO THE ARLINGTON BRANCH OF THE RIVERSIDE PUBLIC LIBRARY @ THE COR. OF MAGNOLIA & ROOSEVELT.
ELEV 788-349

ALBERT A. WEBB ASSOCIATES CIVIL ENGINEERS RIVERSIDE, CALIFORNIA APPROVED BY: <i>[Signature]</i> DATE: 3-25-77 R.E. No. 21884	APPROVED BY: <i>[Signature]</i> DATE: 9-28-77 CHIEF UTILITIES ENGINEER, WATER	CITY OF RIVERSIDE, CALIFORNIA DEPARTMENT OF PUBLIC WORKS APPROVED BY: <i>[Signature]</i> DATE: 10/19/77 OFFICE ENGINEER PARK DEPARTMENT TRAFFIC DIVISION ASSISTANT CITY ENG.	# OF BUICKS: 4-15-80 B/C/P INDEXED R.R.
	DESIGNED BY: <i>[Signature]</i> DRAWN BY: <i>[Signature]</i> CHECKED BY:		PROJECT NO. S-1132 TRACT NO. 8837 INDEX SHEET 1 OF 4 FILE NO. 76-26-B



ALBERT A. WEBB ASSOCIATES
 CIVIL ENGINEERS
 RIVERSIDE, CALIFORNIA

APPROVED BY: *Barry Scott* DATE: 3.25.77
 R.E. No. 21884

W.O. 76-26 FOR: ROBERT MILLER F.B. 1031

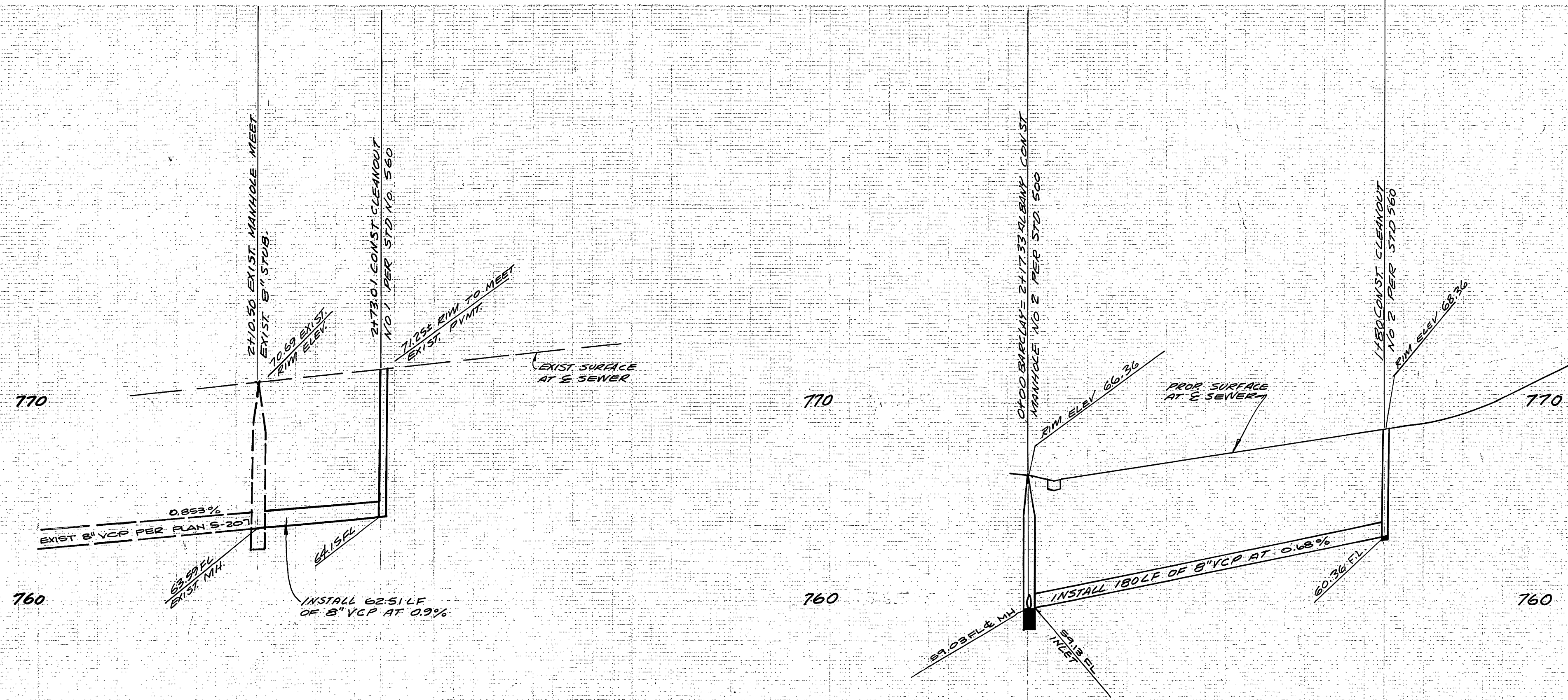
CITY OF RIVERSIDE, CALIFORNIA
 PUBLIC WORKS DEPARTMENT

APPROVED BY: *William D. ...* DATE: 10/19/77
 PRINCIPAL ENGINEER
 PARK DEPARTMENT
 TRAFFIC DIVISION
 CHIEF PUB. WKS. ENGR.

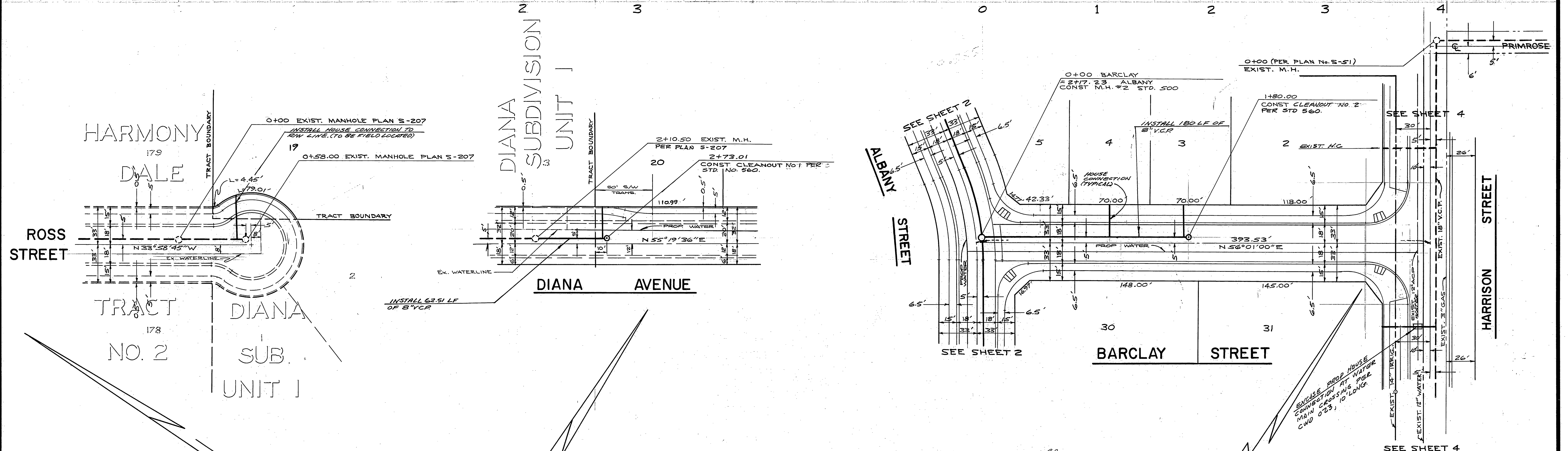
SEWER PLAN & PROFILE
 TRACT 8837
 ALBANY STREET

ACCOUNT No. INDEXED R.R.
 DRAWING NUMBER: S-1132
 SHEET 2 OF 4
 76-26-B

SCALE: HORIZ. 1"=40' VERT. 1"=4'



BENCH MARK:
BRASS DISK STAMPED 038-1924 SET IN CONC.
LANDING OF THE MAGNOLIA ENTRANCE TO THE
ARLINGTON BRANCH OF THE RIVERSIDE PUBLIC
LIBRARY AT THE CORNER OF MAGNOLIA & ROOSEVELT.
ELEV 786.349



APPROVED BY
Wesley Hylan
CHIEF UTILITIES ENGINEER, WATER
DATE 9-28-77

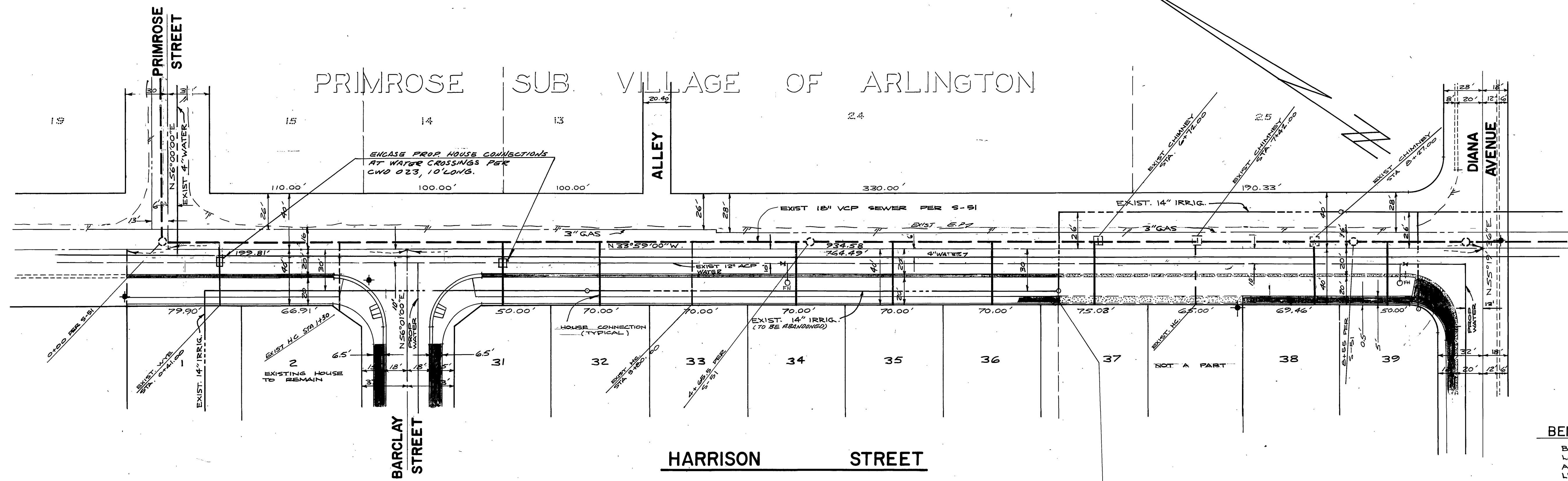
ALBERT A. WEBB ASSOCIATES
CIVIL ENGINEERS
RIVERSIDE, CALIFORNIA
APPROVED BY *David Lopez* DATE 3-25-77
R.E. No. 21884
W.O. 76-26 FOR ROBERT MILLER F.B. 1031

CITY OF RIVERSIDE, CALIFORNIA
PUBLIC WORKS DEPARTMENT
APPROVED BY *William D. Barber*
DIRECTOR OF PUBLIC WORKS
DATE 10/19/77

SEWER PLAN & PROFILE
ROSS STREET
DIANA AVENUE &
BARCLAY STREET
TRACT 8837
SCALE: HORIZ 1"=40' VERT. 1"=4'

ACCOUNT No.
DRAWING NUMBER
S-1132
SHEET 3 OF 4
76-26-B

14 13 12 11 10 9 8 7 6 5 4



BENCH MARK:
 BRASS DISC STAMPED 038-1924 SET IN CONC. LANDING OF THE MAGNOLIA ENTRANCE TO THE ARLINGTON BRANCH OF THE RIVERSIDE PUBLIC LIBRARY @ THE COR. OF MAGNOLIA & ROOSEVELT. ELEV. 788-349

NOTE
 MEET EXISTING HOUSE CONNECTION, CHIMNEY OR WYE WHERE SHOWN WITH STATIONS ON THIS SHEET.

ALBERT A. WEBB ASSOCIATES CIVIL ENGINEERS RIVERSIDE, CALIFORNIA APPROVED BY: <i>Paul S. Webb</i> DATE 3-25-77 R.E. No. 21884 W.O. 76-26 FOR: ROBERT MILLER F.B. 1031	APPROVED BY <i>Robert Miller</i> CHIEF UTILITIES ENGINEER, WATER DATE 9-28-77	CITY OF RIVERSIDE, CALIFORNIA PUBLIC WORKS DEPARTMENT	SEWER PLAN & PROFILE HARRISON STREET BETWEEN DIANA AND PRIMROSE TRACT 8837	ACCOUNT No. DRAWING NUMBER S-1132 SHEET 4 OF 4 INDEXED R/R
	MARK REVISIONS APPR. DATE DESIGNED BY <i>SE</i> DRAWN BY <i>2222</i> CHECKED BY	APPROVED BY PRINCIPAL ENGINEER <i>William S. Gardner</i> DATE 10/19/77 PARK DEPARTMENT TRAFFIC DIVISION CHIEF PUB. WKS. ENGR.	SCALE: HORIZ. 1"=40' VERT. 1"=4'	DATE 10/19/77