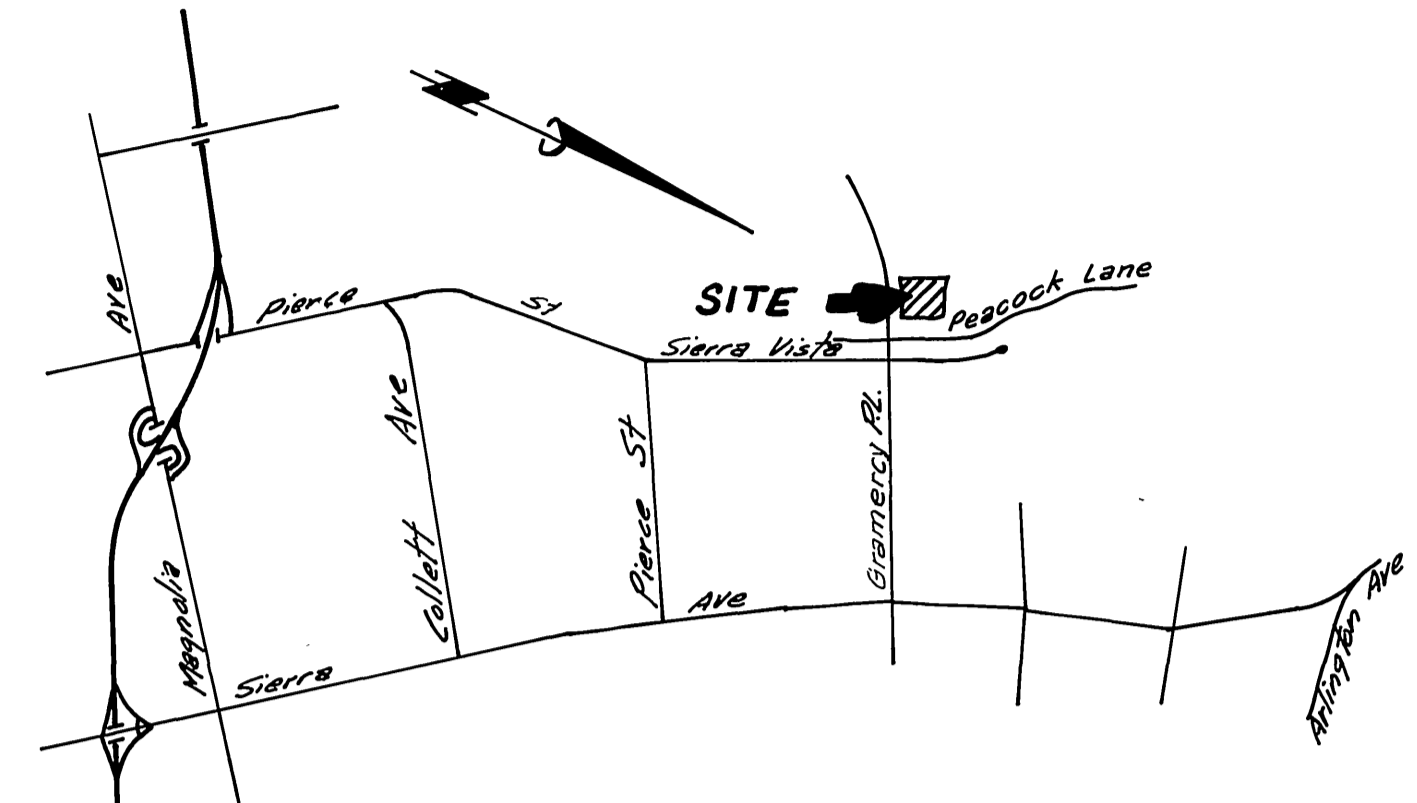


**INDEX MAP**  
NO SCALE



**LOCATION MAP**  
NO SCALE

**GENERAL NOTES:**

1. The private engineer signing these plans is responsible for the accuracy and acceptability of the work hereon. In the event of discrepancies arising during construction, the private engineer shall be responsible for determining a acceptable solution and revising the plans for the approval by the City.
2. Construction shall be in accordance with Standard Specifications for Public Works Construction, 1976 Edition, and City of Riverside Standard drawings.
3. It shall be the responsibility of the contractor to clear the right of way in accordance with the provisions of law as it affects each utility including irrigation lines and appurtenances and at no cost to the City.
4. Pipe shall be bedded per Case 1 Standard Drawing No 452 unless otherwise specified on plans.
5. Location of Wyes and Laterals to be determined at the direction of the owner.
6. All stubs and laterals to be constructed in accordance with Standard Drawing No 362. Stubs to be plugged and capped.
7. Manhole frames and covers to be adjusted to grade by Sewer Contractor after final paving of streets.
8. Laterals are to be 4" and extended to property line.
9. Encase Sewer 45' each side of proposed water line crossing per Public Utilities Drawing C.W.D. 023 Type B.
10. Plugs shall be installed and will remain in place where the new sewer connects with the existing sewer until such time as the new sewer is accepted by the City.
11. Contractor is to expose and verify elevation of existing 8" K.C.P. before installing any sewer lines.

**NOTICE TO CONTRACTOR**

The existence and location of underground utility pipes or structures shown on these plans are obtained by a search of the available records. To the best of our knowledge there are no existing utilities except as shown on these plans.

The Contractor is required to take due precautionary measures to protect the utility lines shown and any other lines not of record or not shown on these plans.

**BENCH MARK**

City B.M. F1-A Elev = 806.587  
Brass disc in 12" conc monument,  
SW Corner of Gramercy & Sierra  
Vista. On back of curb at the  
NW end of sidewalk planter.

ALBERT A. WEBB ASSOCIATES  
CIVIL ENGINEERS  
RIVERSIDE, CALIFORNIA  
APPROVED BY: *[Signature]* DATE 2-18-77  
R.E. No. 2876

MARK	REVISIONS	APPR.	DATE

Approved By: *[Signature]* 2-25-77  
Chief Utilities Engineer, Water Date

APPROVED BY: *[Signature]* DATE 2-25-77  
PRINCIPAL ENGINEER  
PARK DEPARTMENT  
TRAFFIC DIVISION  
CHIEF PUB. WKS. ENGR.

CITY OF RIVERSIDE, CALIFORNIA  
SEWER PLAN & PROFILE  
TRACT NO 630-1  
INDEX SHEET

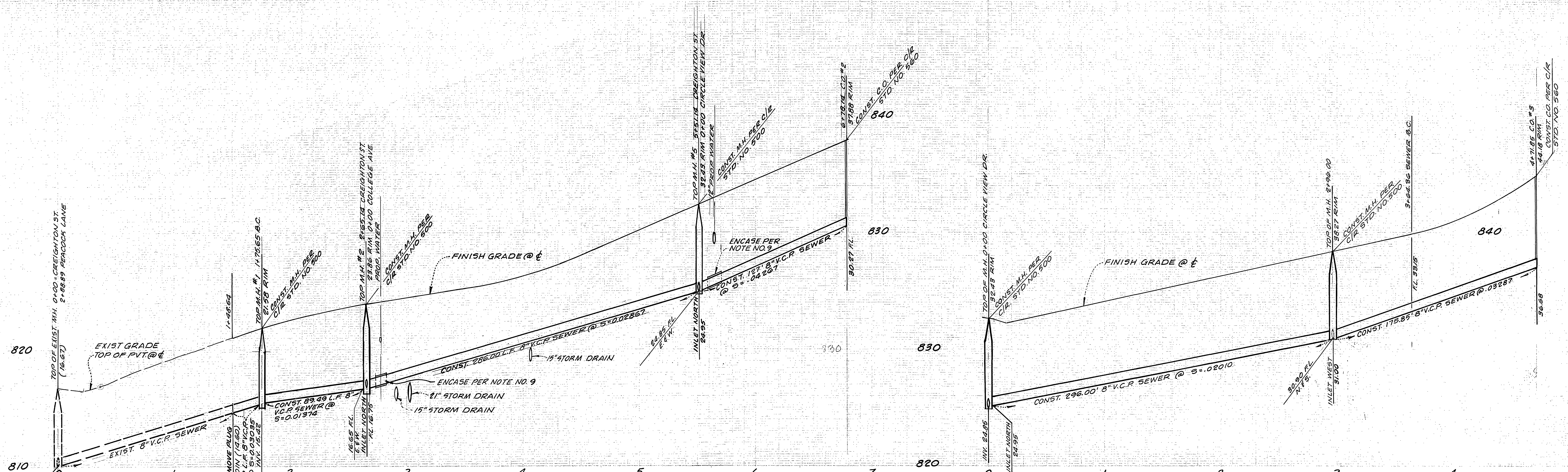
ACCOUNT No. INDEXED R.R.  
DRAWING NUMBER  
**S-1134**  
SHEET 1 OF 3  
76-327-B

W.O. 76-327 FOR: Silvers Investment Co. F.B. 1059

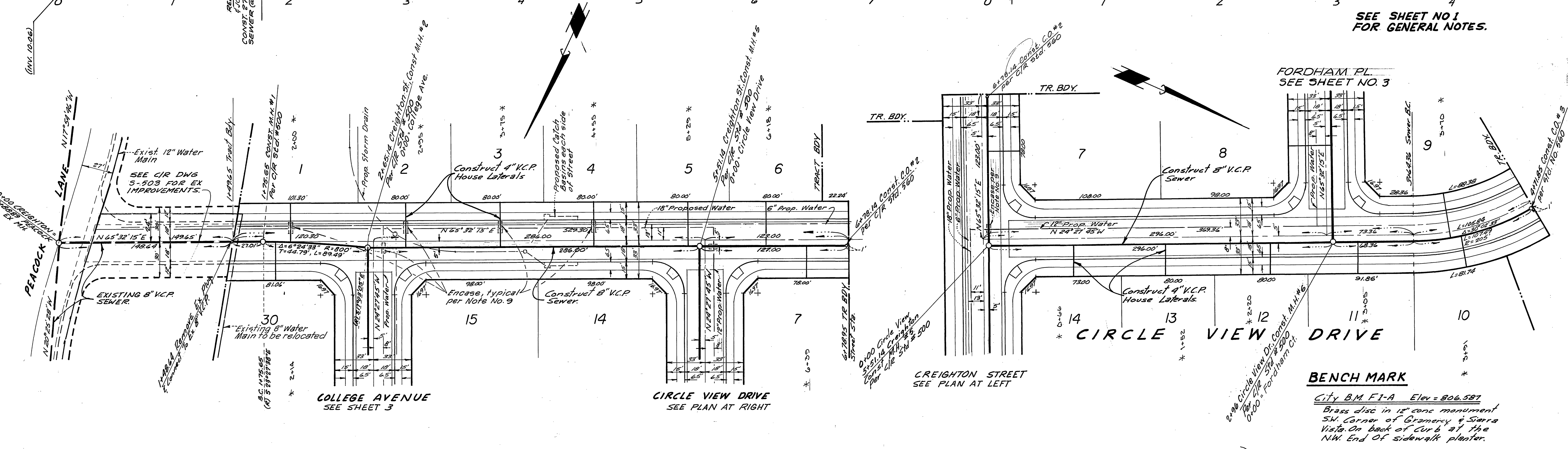
DESIGNED BY R.E.C. DRAWN BY L.E.M. CHECKED BY

SCALE:

76-327-B



SEE SHEET NO 1 FOR GENERAL NOTES.



**BENCH MARK**  
 City B.M. F1-A Elev = 806.587  
 Brass disc in 12" conc monument  
 SW. Corner of Gramercy & Sierra  
 Vists. On back of curb at the  
 NW. End of sidewalk planter.

CREIGHTON STREET

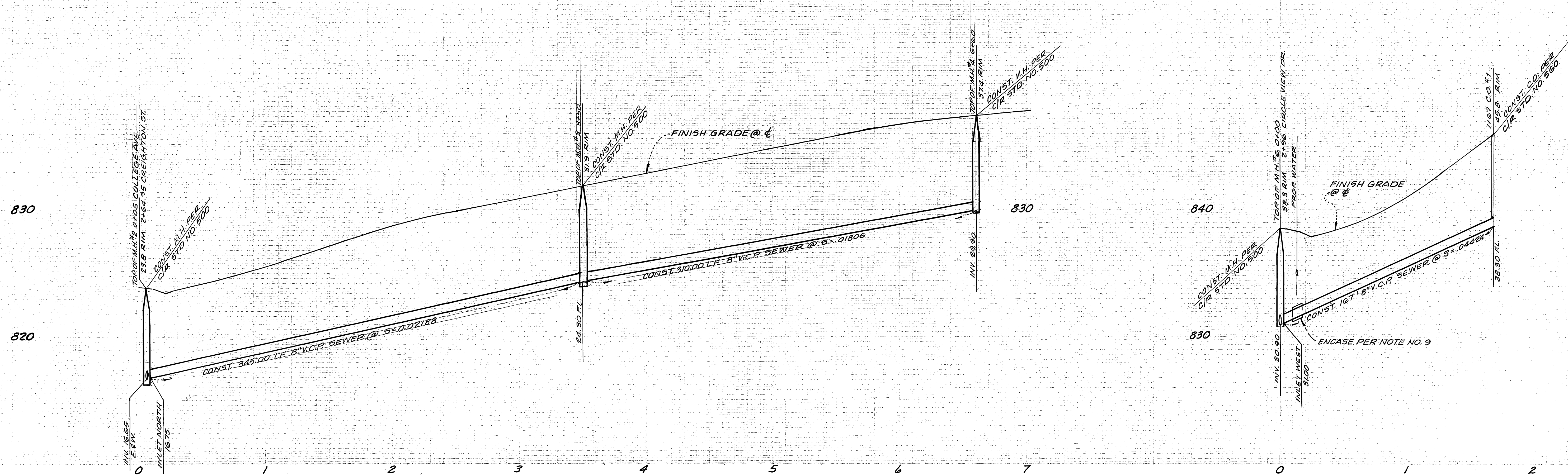
ALBERT A. WEBB ASSOCIATES  
 CIVIL ENGINEERS  
 RIVERSIDE, CALIFORNIA  
 APPROVED BY: *Carl H. Webb* DATE: 2-10-77  
 R.E. No. 2874

MARK	REVISIONS	APPR.	DATE

Approved By: *William D. Harlow* 2-25-77  
 Chief Utilities Engineer, Water Date  
 APPROVED BY: *William D. Harlow*  
 PRINCIPAL ENGINEER 2/20/77  
 PARK DEPARTMENT  
 TRAFFIC DIVISION  
 CHIEF PUB. WKS. ENGR.  
 DATE: 9/26/77

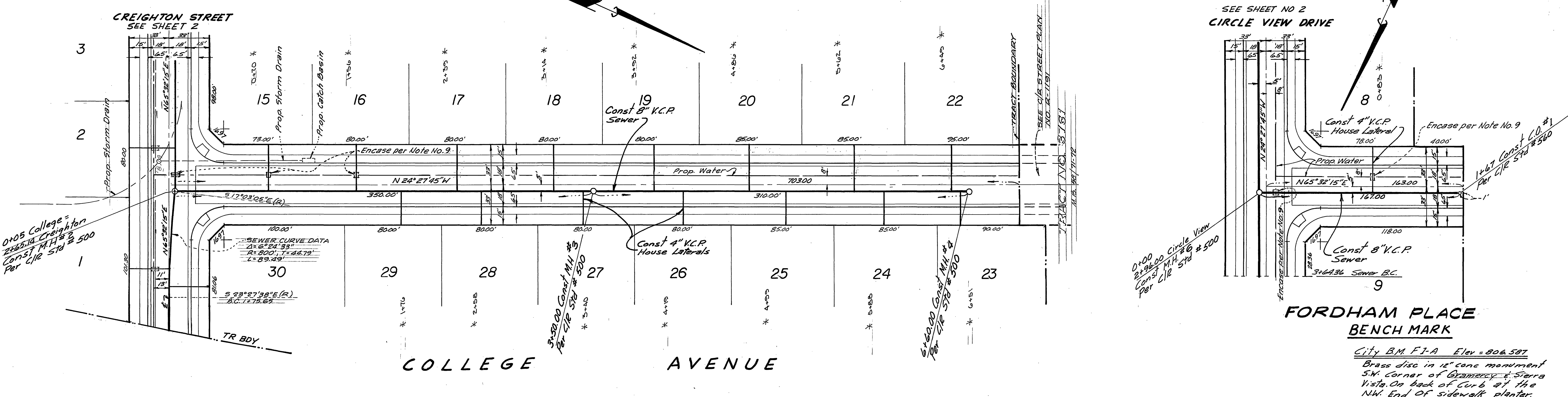
CITY OF RIVERSIDE, CALIFORNIA  
 PUBLIC WORKS DEPARTMENT  
 SEWER PLAN & PROFILE  
 TRACT NO 6301-1  
 CREIGHTON ST  
 CIRCLE VIEW DR

ACCOUNT No.  
 DRAWING NUMBER  
**S-1134**  
 SHEET 2 OF 3  
 76-327-B



SEE SHEET NO. 1 FOR GENERAL NOTES

SEE SHEET NO. 2 CIRCLE VIEW DRIVE



**FORDHAM PLACE BENCH MARK**  
 City B.M. F1-A Elev = 806.587  
 Brass disc in 12" cone monument SW corner of Bramercy & Sierra Vista. On back of curb at the NW End of sidewalk planter.

<b>ALBERT A. WEBB ASSOCIATES</b> CIVIL ENGINEERS RIVERSIDE, CALIFORNIA APPROVED BY: <i>[Signature]</i> DATE: 2-10-77 R.E. No. 2874 W.O. 76-327 FOR: <i>Stivers Investment Co. F.B. 1039</i>	DESIGNED BY: <i>[Signature]</i> DRAWN BY: <i>[Signature]</i> CHECKED BY:	APPROVED BY: <i>[Signature]</i> DATE: 2-25-77 Chief Utilities Engineer, Water	<b>CITY OF RIVERSIDE, CALIFORNIA</b> PUBLIC WORKS DEPARTMENT APPROVED BY: <i>[Signature]</i> DATE: 9/7/70 PARK DEPARTMENT TRAFFIC DIVISION CHIEF PUB. WKS. ENGR.	<b>SEWER PLAN &amp; PROFILE</b> TRACT NO 630-I COLLEGE AVE FORDHAM PLACE SCALE: H 1"=40' V 1"=4' ACCOUNT No. 5-1134 DRAWING NUMBER 3 OF 3 SHEET 3 OF 3 76-327-B
		APPROVED BY: <i>[Signature]</i> DATE: 9/26/77 DIRECTOR OF PUBLIC WORKS		