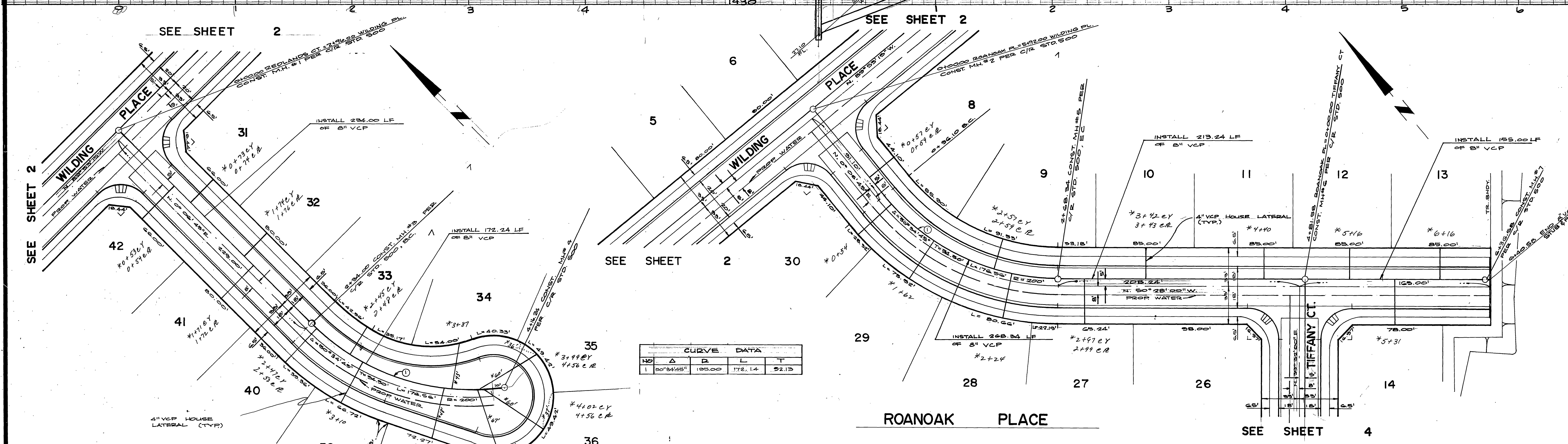
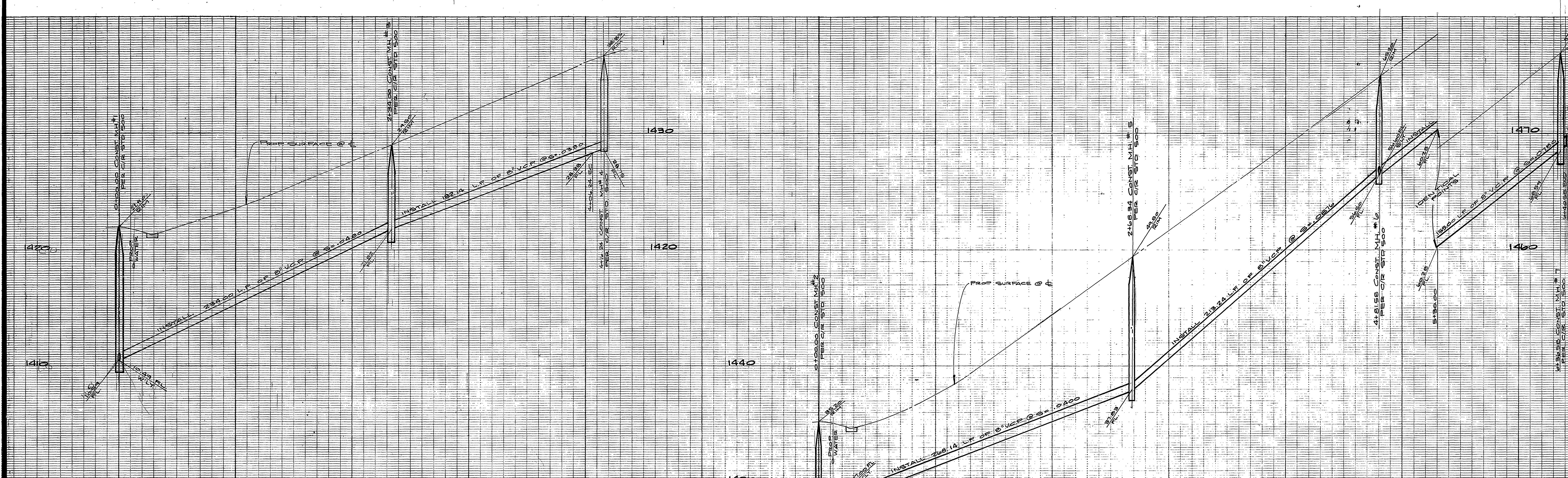


**MISSING SHEET**

**MISSING SHEET**



NO	Δ	D	L	T
1	50°34'45"	195.00	172.14	92.13

NOTE:  
SEE SHEET #1 FOR GENERAL NOTES

BENCH MARK:  
FD. 1 1/2" SQUARE ROD IN CONC. IN WELL 200' SOUTHWESTLY OF VIA VISTA DR.  
ON ALESSANDRO BLVD. CITY OF RIVERSIDE. S.M. F7A = ELEV. 1337.423  
TAKEN AS ELEVATION 1337.00 FOR THESE PLANS.

CITY OF RIVERSIDE  
DOMESTIC SYSTEM  
*Wesley Hyler* 9-23-77  
CHIEF UTILITIES ENGINEER, WATER DATE

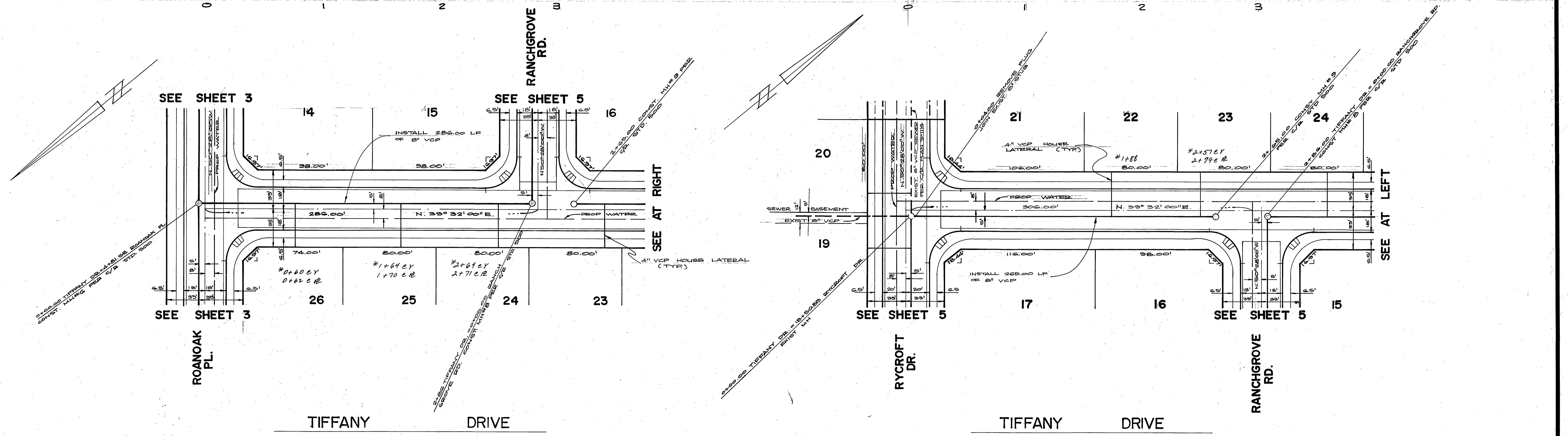
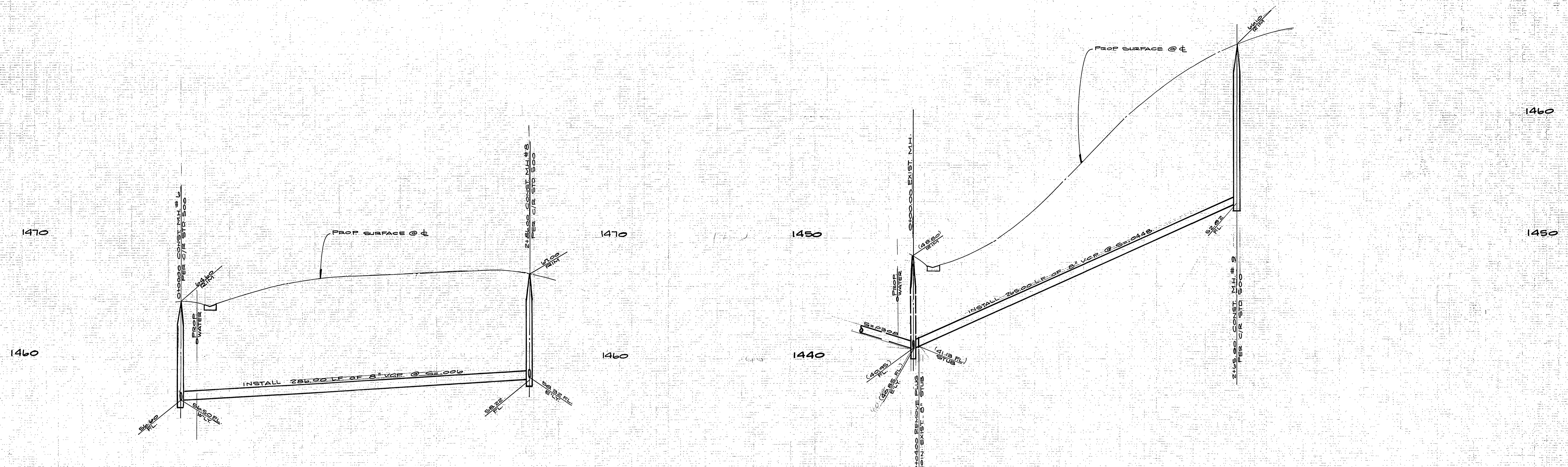
ALBERT A. WEBB ASSOCIATES  
CIVIL ENGINEERS  
RIVERSIDE, CALIFORNIA  
APPROVED BY *[Signature]* DATE *9/23/77*  
R.E. No. 27105

DESIGNED BY *[Signature]* DRAWN BY *[Signature]* CHECKED BY *[Signature]*

CITY OF RIVERSIDE, CALIFORNIA  
PUBLIC WORKS DEPARTMENT  
APPROVED BY *[Signature]* DATE *10/17/77*  
PRINCIPAL ENGINEER  
PARK DEPARTMENT  
TRAFFIC DIVISION  
CHIEF PUB. WKS. ENGR.

SEWER PLAN & PROFILE  
TRACT 9078-2  
REDLANDS COURT  
ROANOAK PLACE  
SCALE: HORIZ. 1"=40' VERT. 1"=4'

ACCOUNT No. 77-95  
DRAWING NUMBER  
**S-1135**  
SHEET 3 OF 5  
77-958



**NOTE:**

SEE SHEET #1 FOR GENERAL NOTES.

**BENCH MARK:**

FD 1 1/2" SQUARE ROD IN CONC. IN WELL 200' S'LY OF VIA VISTA DR. IN ALESSANDRO BLVD. CITY OF RIVERSIDE B.M. F7A = ELEV. 1337.423 TAKEN AS ELEV. 1337.90 FOR THESE PLANS. INDEXED & R

CITY OF RIVERSIDE  
DOMESTIC SYSTEM  
*Walter J. Ryan* 9-23-77  
CHIEF UTILITIES ENGINEER, WATER DATE

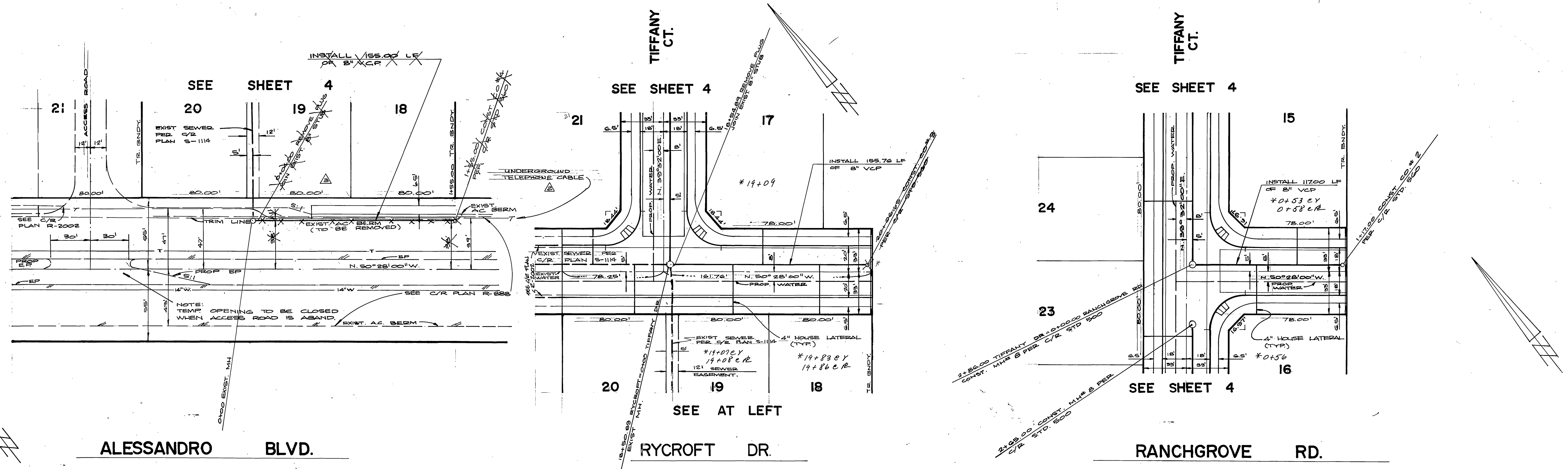
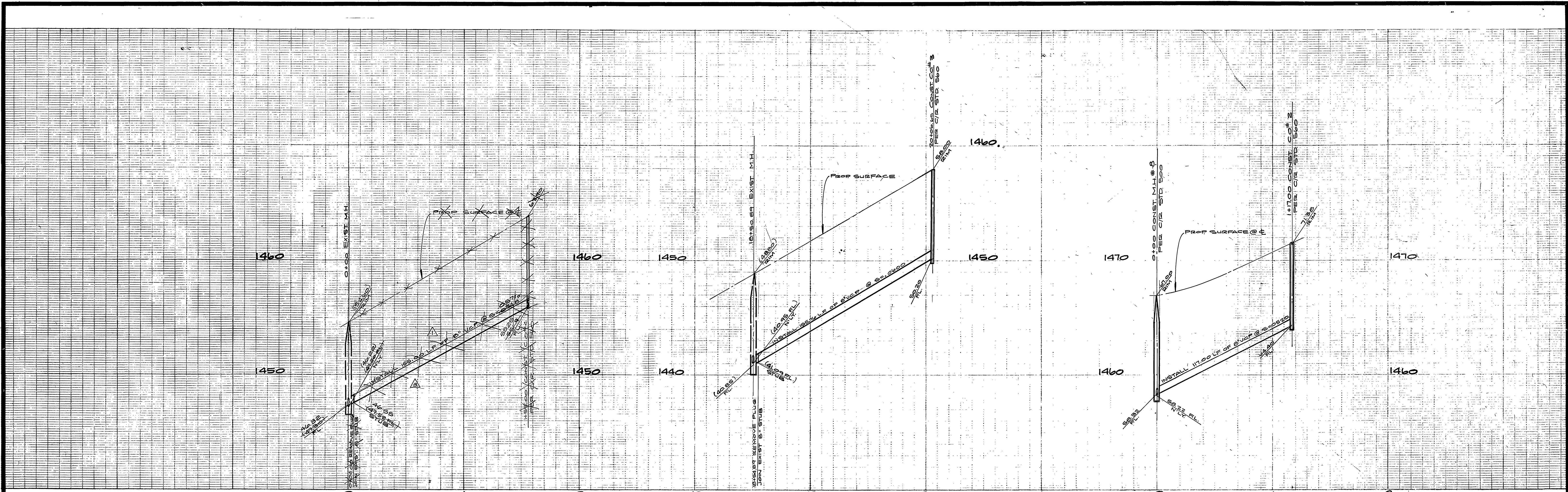
ALBERT A. WEBB ASSOCIATES  
CIVIL ENGINEERS  
RIVERSIDE, CALIFORNIA  
APPROVED BY *[Signature]* DATE 6/1/77  
R.E. No. 27125

MARK	REVISIONS	APPR.	DATE

CITY OF RIVERSIDE, CALIFORNIA  
PUBLIC WORKS DEPARTMENT  
APPROVED BY *[Signature]* DATE 10/17/77  
PRINCIPAL ENGINEER  
PARK DEPARTMENT  
TRAFFIC DIVISION  
CHIEF PUB. WKS. ENGR.  
DATE 10/17/77

SEWER PLAN & PROFILE  
TRACT 9078-2  
TIFFANY DRIVE  
SCALE: HORIZ. 1"=40' VERT. 1"=4'

ACCOUNT No. 77-95  
DRAWING NUMBER  
S-1135  
SHEET 4 OF 5  
77-95 B



**NOTE:**

SEE SHEET #1 FOR GENERAL NOTES. \*AS BUILT 8-78-KET. TO 1/2" SQUARE ROD IN CONC. IN WELL 200' S'LY OF VIA VISTA DR. ON ALESSANDRO BLVD. CITY OF RIVERSIDE. B.M. FTA 5 ELVE 1337.423. TAKEN AS ELEV. 1337.90 FOR THESE PLANS.

CITY OF RIVERSIDE DOMESTIC SYSTEM  <i>Wesley Hyman</i> 9-23-77 CHIEF UTILITIES ENGINEER, WATER DEPT.	ALBERT A. WEBB ASSOCIATES CIVIL ENGINEERS RIVERSIDE, CALIFORNIA  APPROVED BY <i>[Signature]</i> DATE <i>9/11/77</i> R.E. No. 27102	REVISIONS 1. REVISED GRADES ALESSANDRO BLVD BETWEEN ST 18 & 20 PER C/S PER 2102-80 2. ADDED TELEPHONE CABLE SEE PLAN 8-1114 3. DELETED SEWER MAIN #22 #4 SEE PLAN 8-1114	CITY OF RIVERSIDE, CALIFORNIA PUBLIC WORKS DEPARTMENT  APPROVED BY <i>[Signature]</i> BY DATE <i>9/21/77</i> PRINCIPAL ENGINEER PARK DEPARTMENT TRAFFIC DIVISION CHIEF PUB. WKS. ENGR.	SEWER PLAN & PROFILE TRACT NO. 9078-2 ALESSANDRO BLVD. RANCHGROVE RD. RYCROFT DR.	ACCOUNT No. 77-95 DRAWING NUMBER <b>S-135</b> SHEET 5 OF 5 77-95 B
	W.G. FOR: BIRTH DEV. CO. F.B. 1041		DESIGNED BY <i>[Signature]</i> DRAWN BY <i>[Signature]</i> CHECKED BY <i>[Signature]</i>	DATE <i>10/17/77</i> SCALE: HORIZ. 1"=40' VERT. 1"=4' DATE <i>10/17/77</i>	