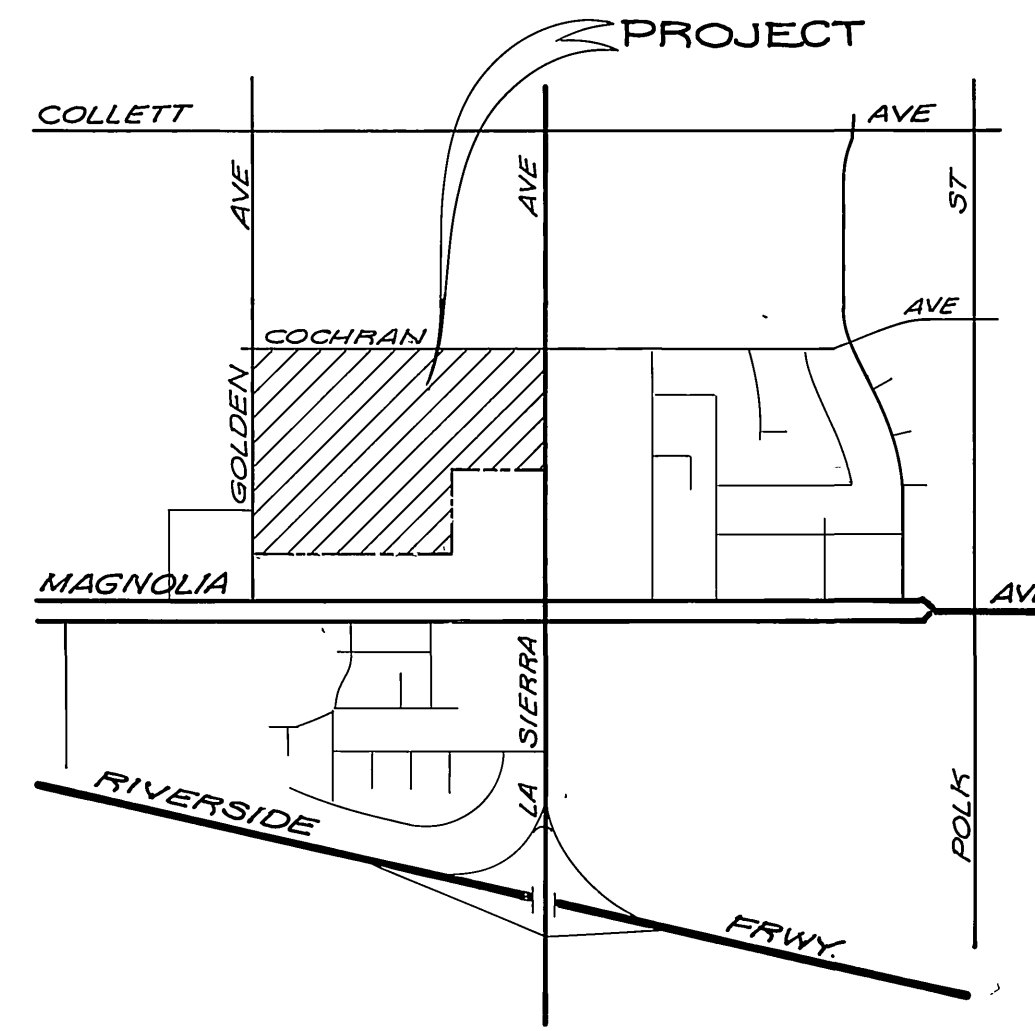


INDEX MAP
NO SCALE



VICINITY MAP
NO SCALE

GENERAL NOTES

Construction shall be in accordance with Standard Specifications for Public Works Construction, 1976 Edition, and City of Riverside Standard Drawings.

It shall be the responsibility of the Contractor to clear the right of way in accordance with the provisions of law as it affects each utility including irrigation lines and appurtenances and at no cost to the city.

Pipe shall be bedded per Case I, Standard Drawing No 452, unless otherwise specified on Plans.

Location of Wyes and Laterals to be determined at the direction of the owner.

All stubs and Laterals to be constructed in accordance with Standard Drawing No. 562; Stubs to be plugged and capped.

Manhole frames and covers to be set as noted in profile by sewer contractor after final paving of streets.

Laterals are to be 4" and extended to property line.

Prior to construction of sewer, Contractor is to expose existing sewer and contact the Engineer for verification of existing location and elevation.

Encase sewer 4.5' each side of proposed water main crossing per Public Utilities Drawing C.W.D. 023, Type B.

A plug shall be installed and will remain in place where the new sewer connects with the existing sewer until the new sewer is accepted by the City.

The Private Engineer signing these plans is responsible for assuring the accuracy and acceptability of the work hereon. In the event of discrepancies arising during construction as a result of errors or omissions, the private engineer shall be responsible for determining an acceptable solution and revising the plans for approval by the City.

NOTICE TO CONTRACTOR

The existence and location of underground utility pipes or structures shown on these plans are obtained by a search of the available records. To the best of our knowledge, there are no existing utilities except as shown on these plans.

The Contractor is required to take due precautionary measures to protect the utility lines and any other lines not of record or not shown on these plans.

BENCH MARK

R.R. Spike in Power Pole No 24589 J
at S.E. Corner La Sierra and Collett
C/R F.B. 978 Pg 5
Elev. 704.25

CITY OF RIVERSIDE
DOMESTIC SYSTEM
Wally Coffey 9-29-77
Chief Utilities Engineer, Water Date

J.P. KAPP & ASSOCIATES, INC.
501 PARK CENTER DRIVE, SUITE 200
SANTA ANA, CALIFORNIA 92750
(714) 347-8445

J.P. Kapp R.C.E. NO. 22015 DATE 4-1-77

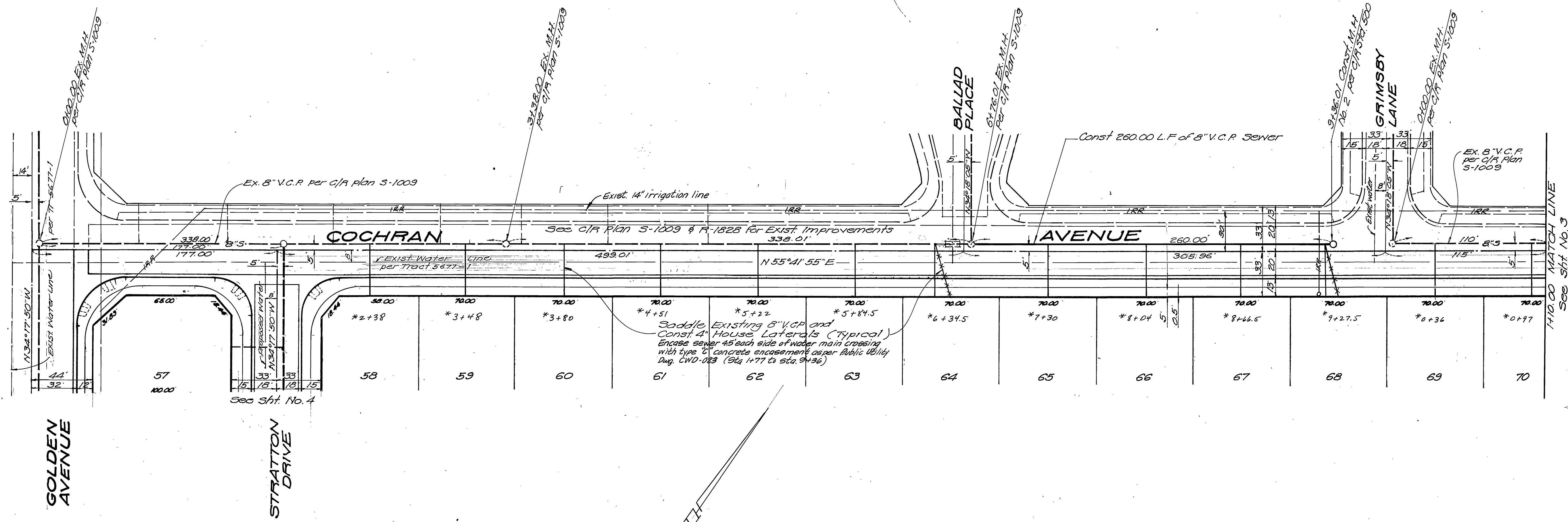
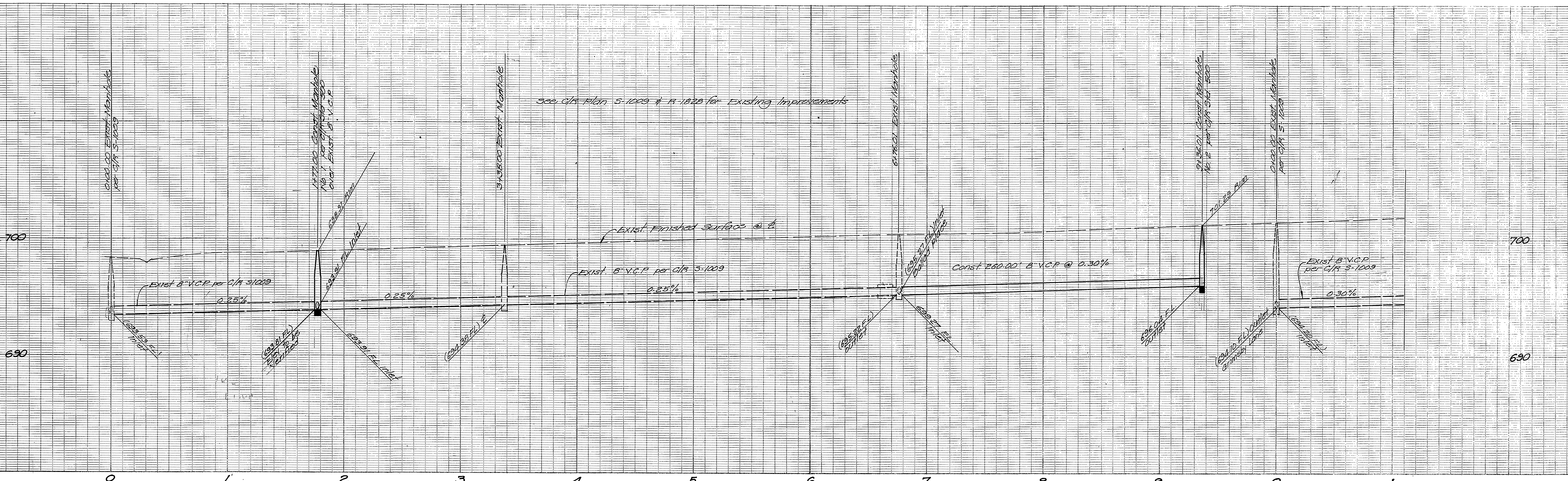
MARK REVISIONS APPR. DATE
DESIGNED BY DRAWN BY CHECKED BY

CITY OF RIVERSIDE, CALIFORNIA
DEPARTMENT OF PUBLIC WORKS
APPROVED BY BY DATE
PRINCIPAL ENGINEER *Wally Coffey* 10/19/77
PARK DEPARTMENT
TRAFFIC DIVISION
CHIEF P. W. ENGR.
DATE 10/19/77

*AS BUILT 8-78 KPP
INDEXED R.R.
PROJECT NO.
SEWER PLAN - PROFILE
TRACT NO. 8203-1
INDEX SHEET

PROJECT NO.
S-1140
SHEET 1 OF 7
FILE NO.

HORIZ. SCALE: 1" = 7'
VERT. SCALE: 1" = 1'



BENCH MARK
 R.F. Spike in Power Pole No. 24589 J
 at S.E. Corner La Sierra and Collett
 C/A F.B. 578 B-5
 Elev. 704.25

CITY OF RIVERSIDE
 DOMESTIC SYSTEM
Wally Hylan 9-27-77
 Chief Utilities Engineer, Water Date

J.P. KAPP & ASSOCIATES, INC.
 501 PARK CENTER DRIVE, SUITE 200
 SANTA ANA, CALIFORNIA 92750
 (714) 547-8445
 DATE 4-1-77
 P.C.E. NO. 22015

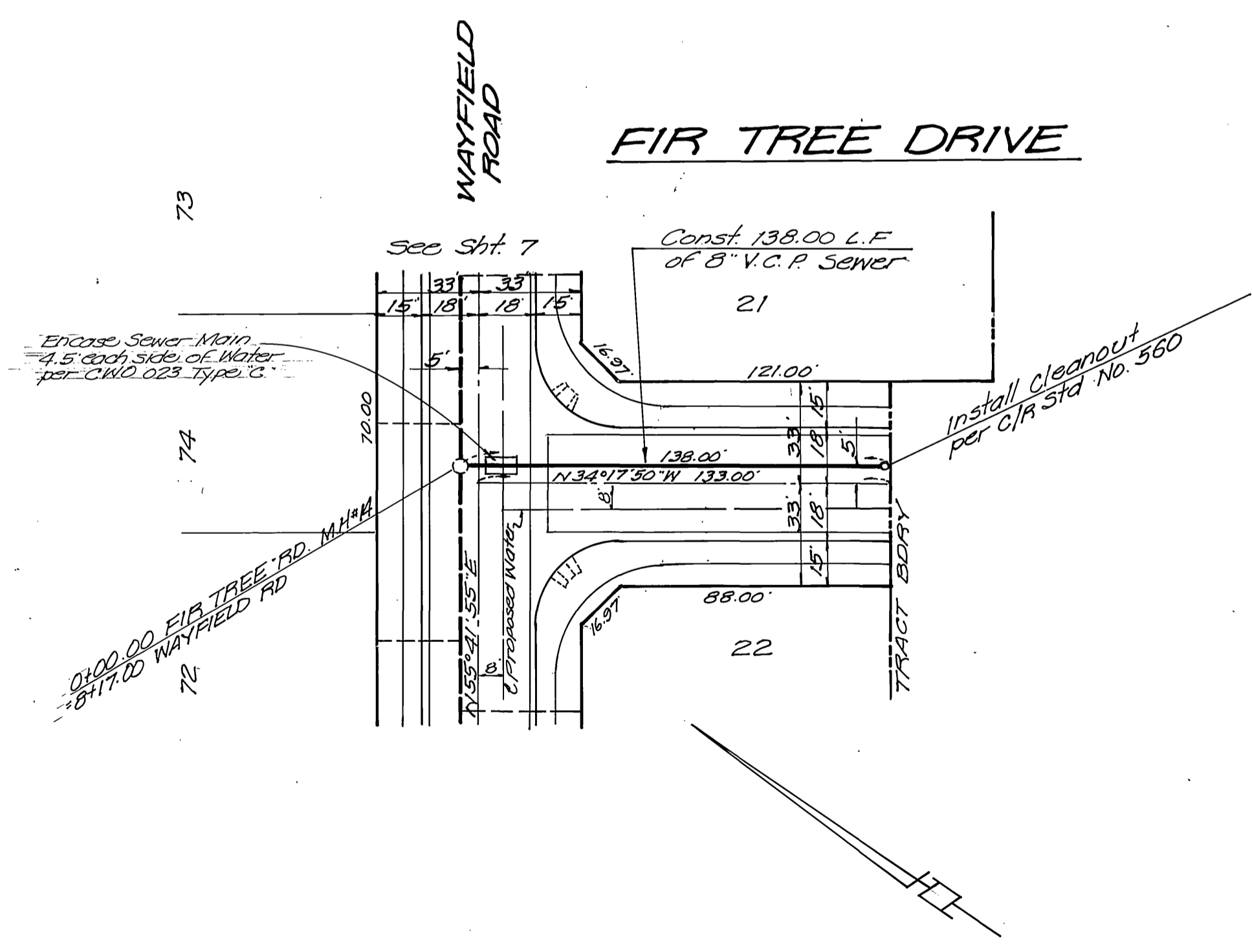
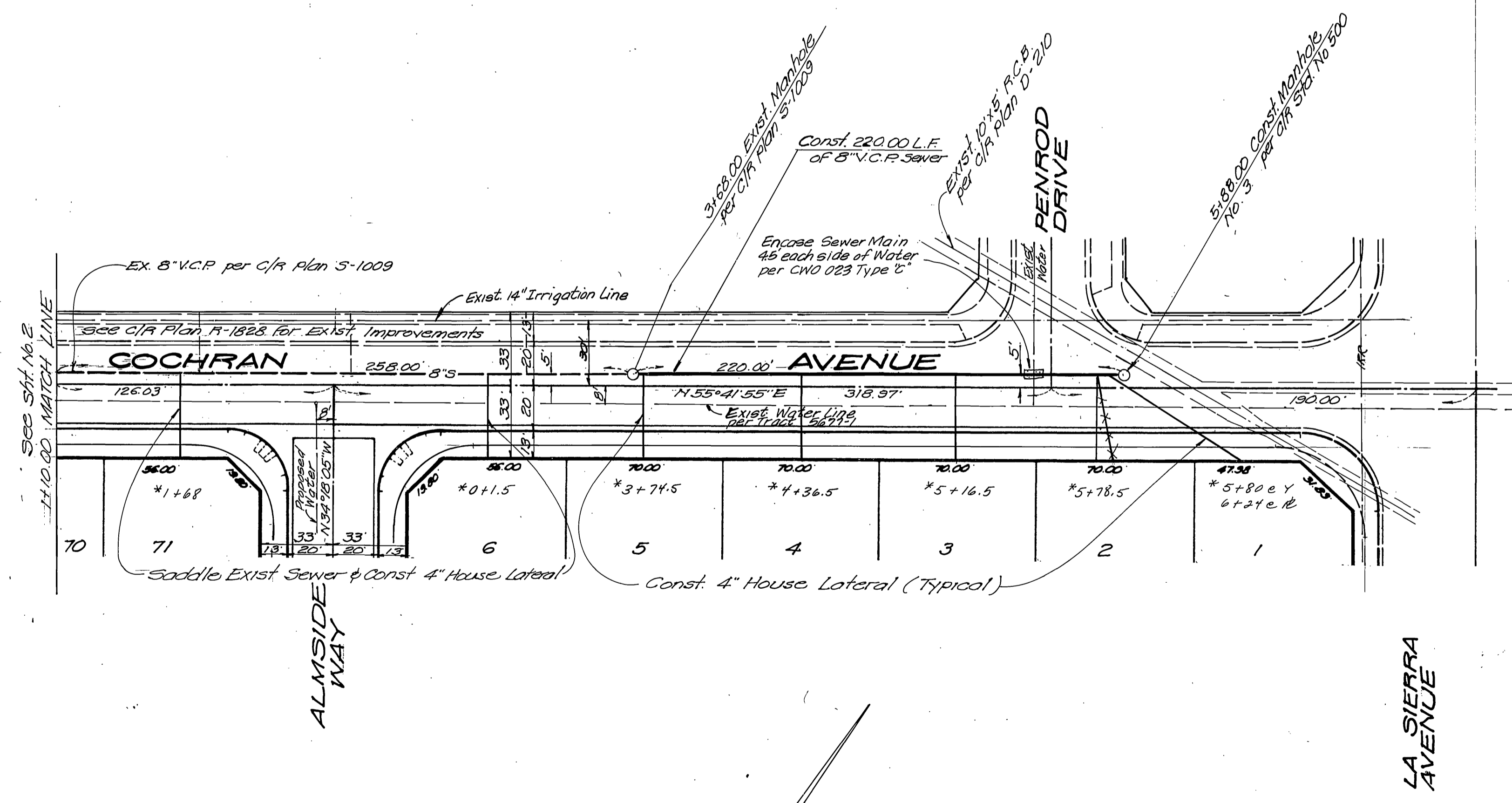
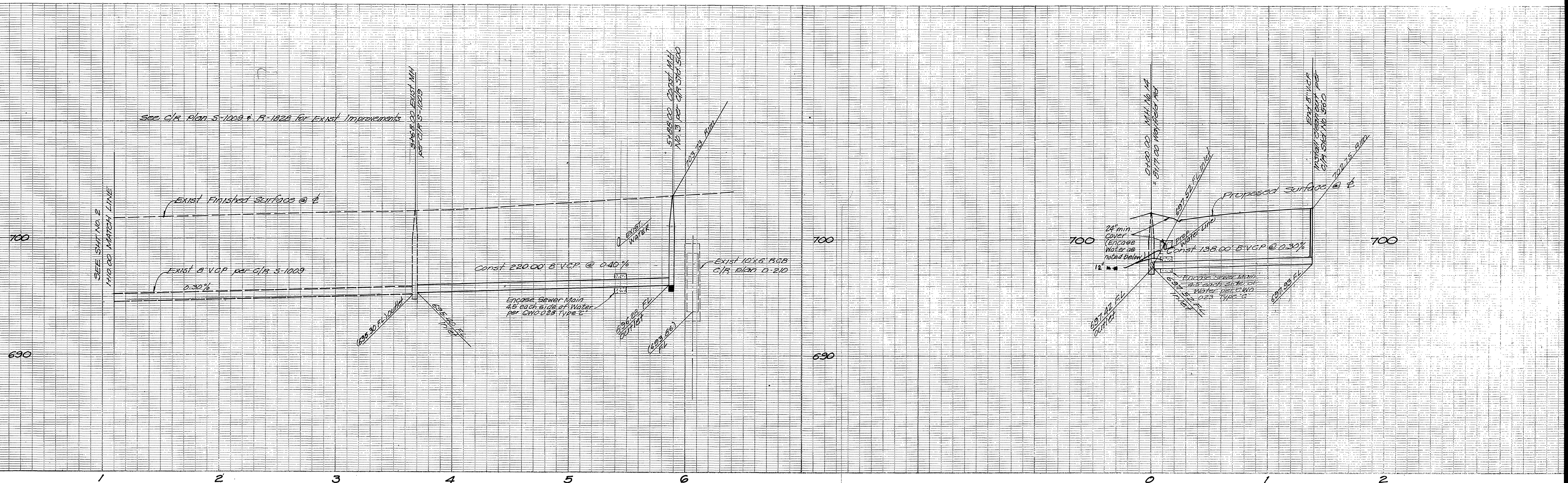
APPROVED BY	BY	DATE
PRINCIPAL ENGINEER	<i>[Signature]</i>	4/1/77
TRAFFIC DIVISION		
CHIEF P. W. ENGR.		
DESIGNED BY	DRAWN BY	CHECKED BY

CITY OF RIVERSIDE, CALIFORNIA
 DEPARTMENT OF PUBLIC WORKS
 APPROVED BY
 PRINCIPAL ENGINEER
 TRAFFIC DIVISION
 CHIEF P. W. ENGR.
 DATE 10/19/77

SEWER PLAN AND PROFILE
 TRACT NO. 8203-1
 COCHRAN AVENUE
 HORIZ. SCALE: 1" = 40'
 VERT. SCALE: 1" = 4'

INDEXED P.R.
 PROJECT NO.
 S-1140
 SHEET 2 OF 7
 FILE NO.

* AS BUILT P. 78 42T



BENCH MARK
 R.R. Spike in Power Pole No 24589 J
 at 3 E Corner La Sierra and Colett
 C/R FB 378 B-5
 Elev. 704.25

CITY OF RIVERSIDE
 DOMESTIC SYSTEM
Wally J. Kapp
 Chief Utilities Engineer, Water
 9-27-77
 Date

J.P. KAPP & ASSOCIATES, INC.
 501 PARK CENTER DRIVE, SUITE 200
 SANTA ANA, CALIFORNIA 92750
 (714) 547-8445
 R.C.E. NO. 22015
 DATE 4-1-77

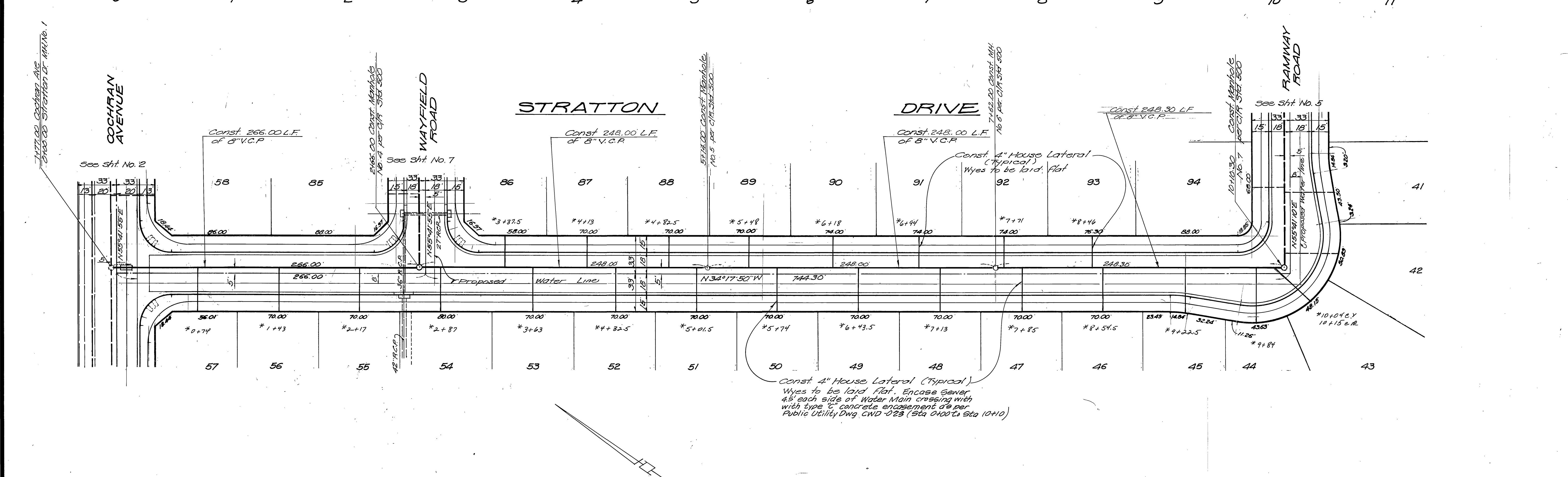
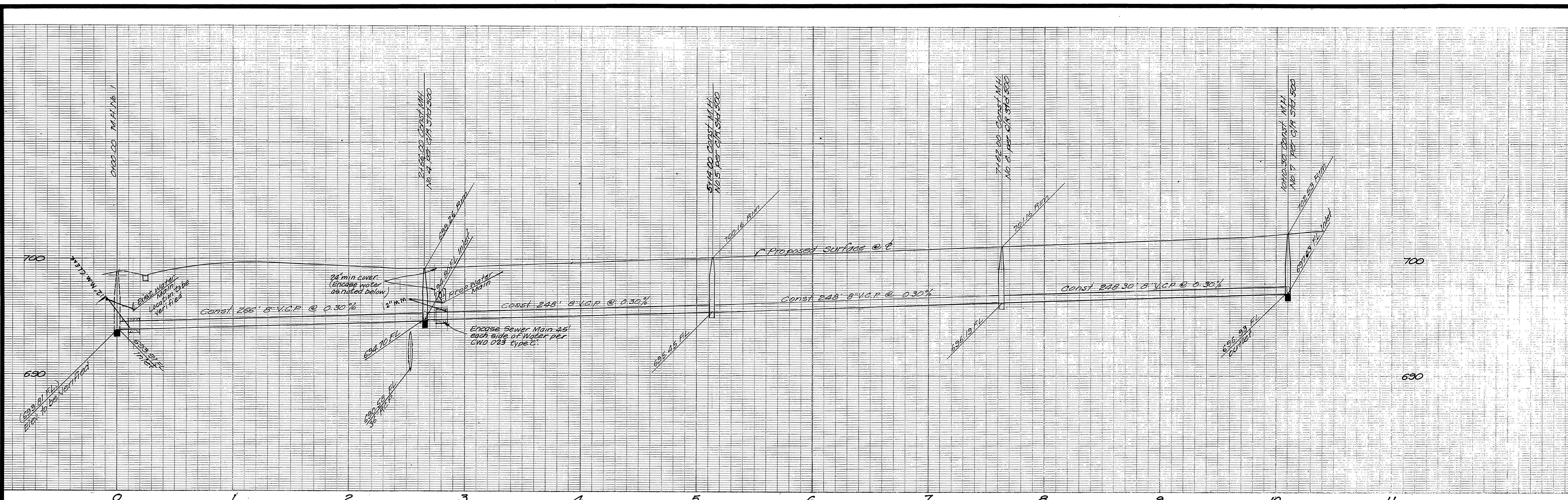
MARK	DESIGNED BY	DRAWN BY	CHECKED BY
REVISIONS	APPR. DATE	DATE	

CITY OF RIVERSIDE, CALIFORNIA
 DEPARTMENT OF PUBLIC WORKS
 APPROVED BY: *Wally J. Kapp*
 PRINCIPAL ENGINEER
 PARK DEPARTMENT
 TRAFFIC DIVISION
 CHIEF P. W. ENGR.
 DATE 10/19/77

INDEXED P.R.
 PROJECT NO.
S-1140
 SHEET 3 OF 7
 FILE NO.
 *AS BUILT 8-78 KPT

SEWER PLAN AND PROFILE
 TRACT NO. 8203-1
COCHRAN AVENUE
FIR TREE DRIVE

HORIZ. SCALE: 1" = 40'
 VERT. SCALE: 1" = 4'



BENCH MARK
 P.R. Spikes in Power Pole No 24583-J
 at S.E. Corner La Sierra and Collett
 C/R F.B. 978 Pg 5
 Elev. 704.25

CITY OF RIVERSIDE
 DOMESTIC SYSTEM
Wally Styler
 Chief Utilities Engineer, Water
 7-27-77
 Date

J. P. KAPP & ASSOCIATES, INC.
 501 PARK CENTER DRIVE, SUITE 200
 SANTA ANA, CALIFORNIA 92750
 (714) 547-2446
 U.R.C.E. NO 22015
 DATE 4-1-77

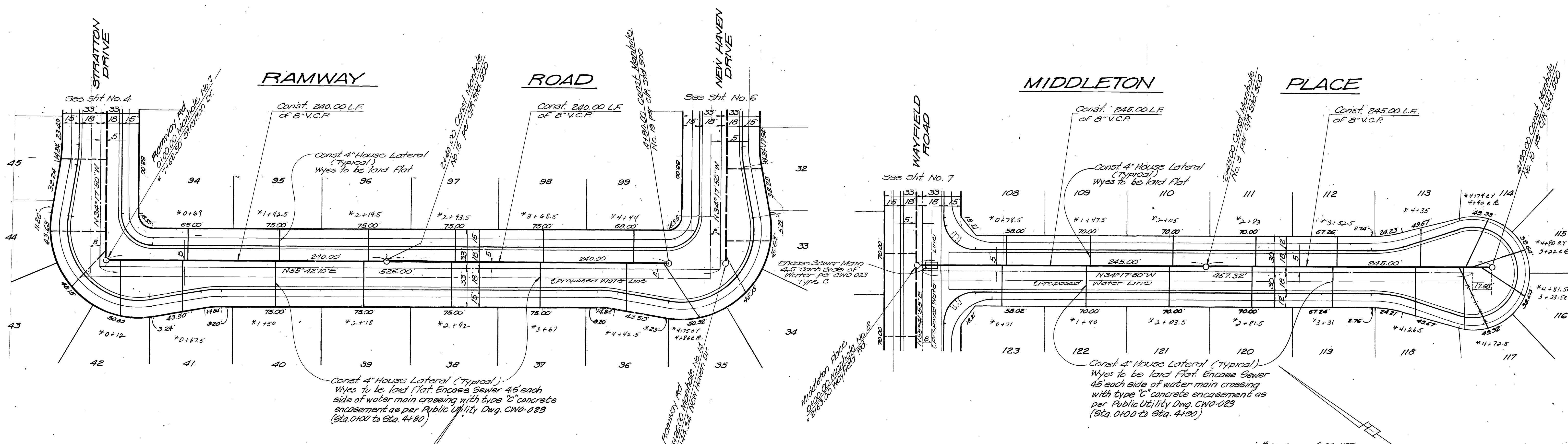
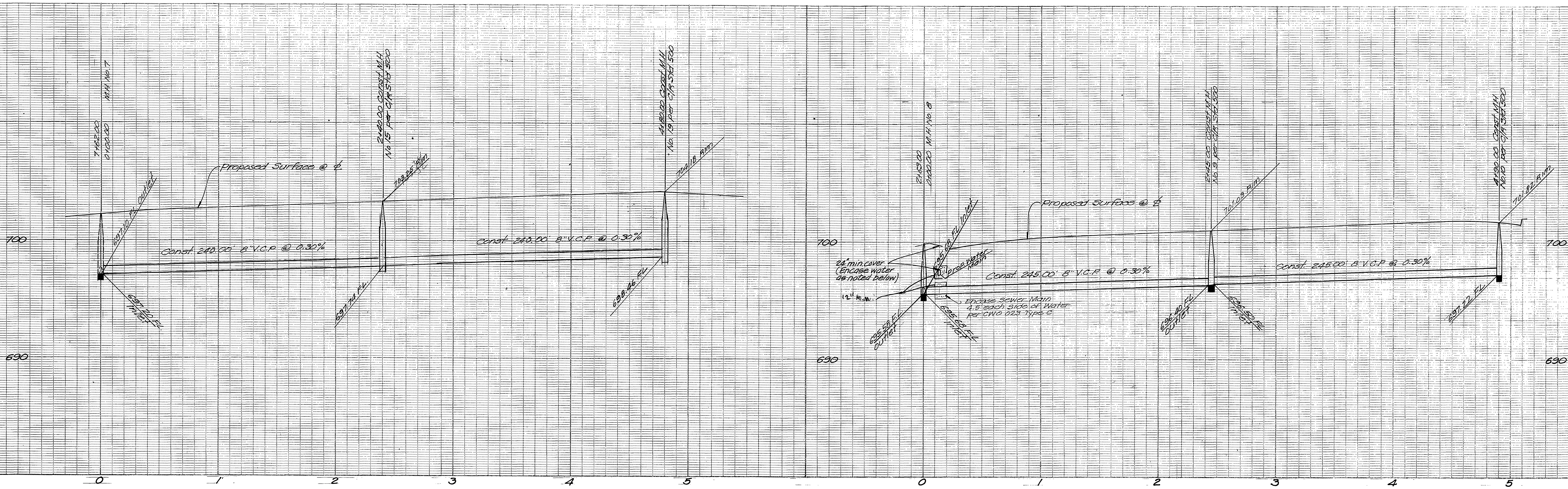
MARK	DESIGNED BY	REVISIONS	DRAWN BY	CHECKED BY

CITY OF RIVERSIDE, CALIFORNIA
 DEPARTMENT OF PUBLIC WORKS
 APPROVED BY: *William D. Hardin*
 PRINCIPAL ENGINEER
 PARK DEPARTMENT
 TRAFFIC DIVISION
 CHIEF P. W. ENGR.
 DATE 10/19/77

INDEXED P.R.
 PROJECT NO. S-1140
 SHEET 4 OF 7
 FILE NO.
 HORIZ. SCALE: 1" = 40'
 VERT. SCALE: 1" = 4'

*AS BUILT 8.78 KFT

Const 4" House Lateral (Typical)
 Wyes to be laid flat. Encase Sewer
 4.5' each side of Water Main crossing with
 type 'C' concrete encasement @ per
 Public Utility Dwg CWD-023 (Sta 0+00 to Sta 10+10)



BENCH MARK
 R.R. Spike in Power Pole No. 24553-J
 at S.E. Corner La Sierra and Collett
 C/P R.F.B. 978 13.5
 Elev. 704.25

CITY OF RIVERSIDE
 DOMESTIC SYSTEM
 Chief Utilities Engineer, Water
 9-27-77
 Date

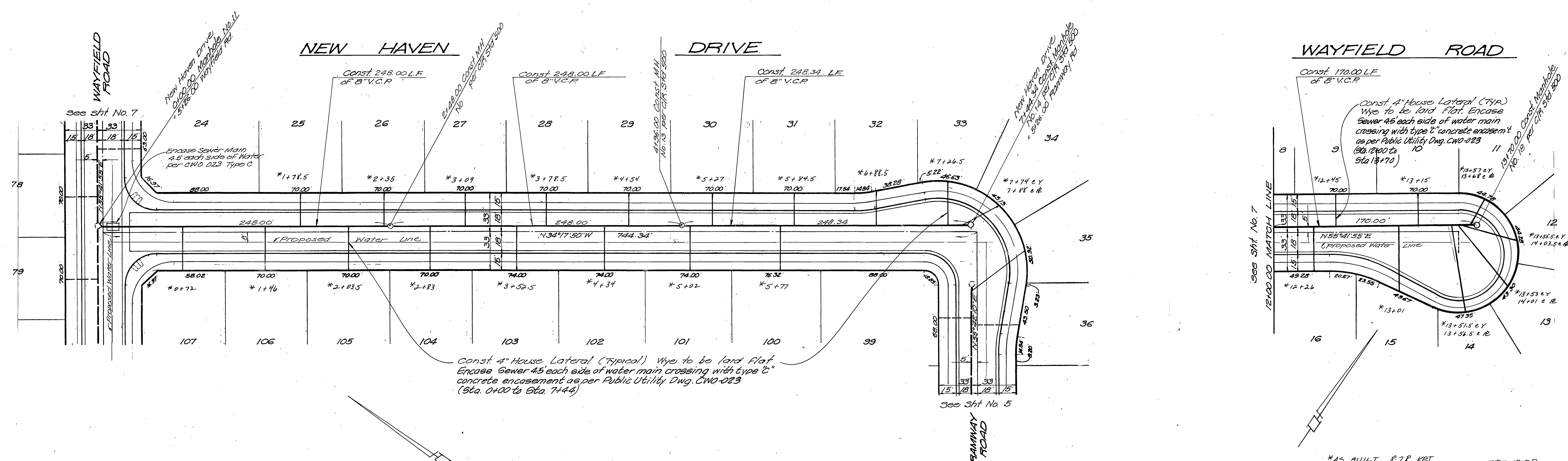
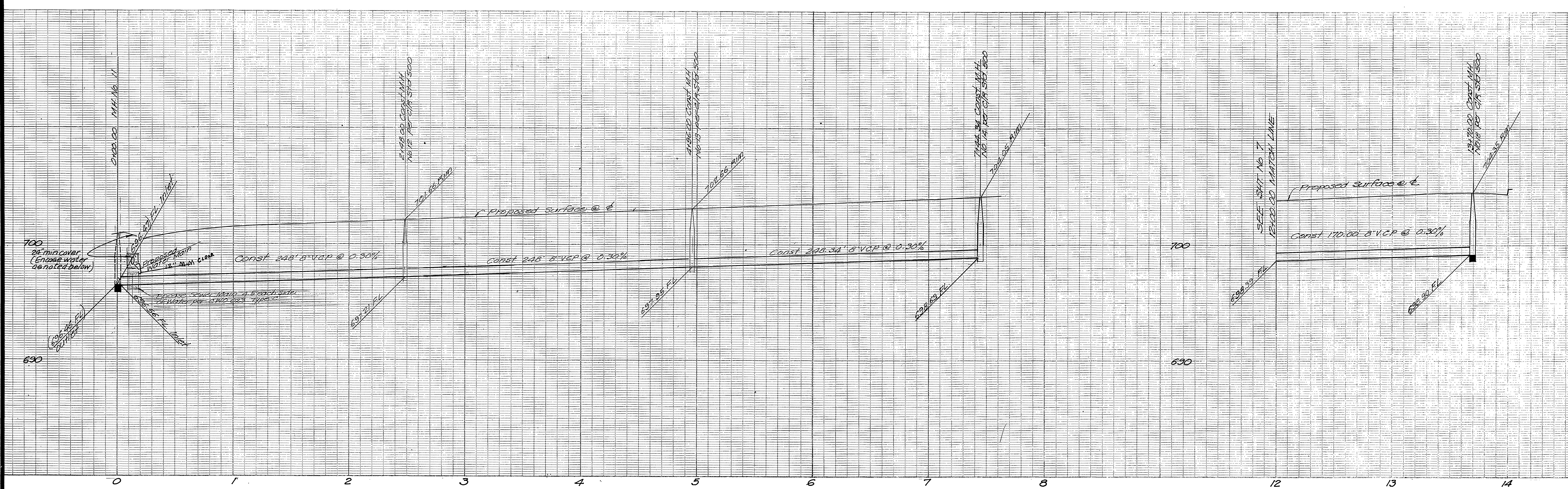
J.P. KAPP & ASSOCIATES, INC.
 501 PARK CENTER DRIVE, SUITE 200
 SANTA ANA, CALIFORNIA 92750
 (714) 547-8445
 R.C.E. No. 22015
 DATE 4-1-77

MARK	REVISIONS	APPR. DATE

CITY OF RIVERSIDE, CALIFORNIA
 DEPARTMENT OF PUBLIC WORKS
 APPROVED BY: [Signature]
 PRINCIPAL ENGINEER
 PARK DEPARTMENT
 TRAFFIC DIVISION
 CHIEF P. W. ENGR.
 DATE 10/19/77

SEWER PLAN AND PROFILE
 TRACT NO. 8203-1
 RAMWAY ROAD
 MIDDLETON PLACE
 HORIZ. SCALE: 1" = 40'
 VERT. SCALE: 1" = 4'

INDEXED R.R. PROJECT NO. S-1140 SHEET 5 OF 7 FILE NO.



BENCH MARK
 R.R. Spike in Power Pole No 24533 J
 of S.E. Corner La Sierra and Collett
 C/P.R. FB. 576.13.5
 Elev. 704.25

CITY OF RIVERSIDE
 DOMESTIC SYSTEM
Walter Schuler 9-27-77
 Chief Utility Engineer, Water Date

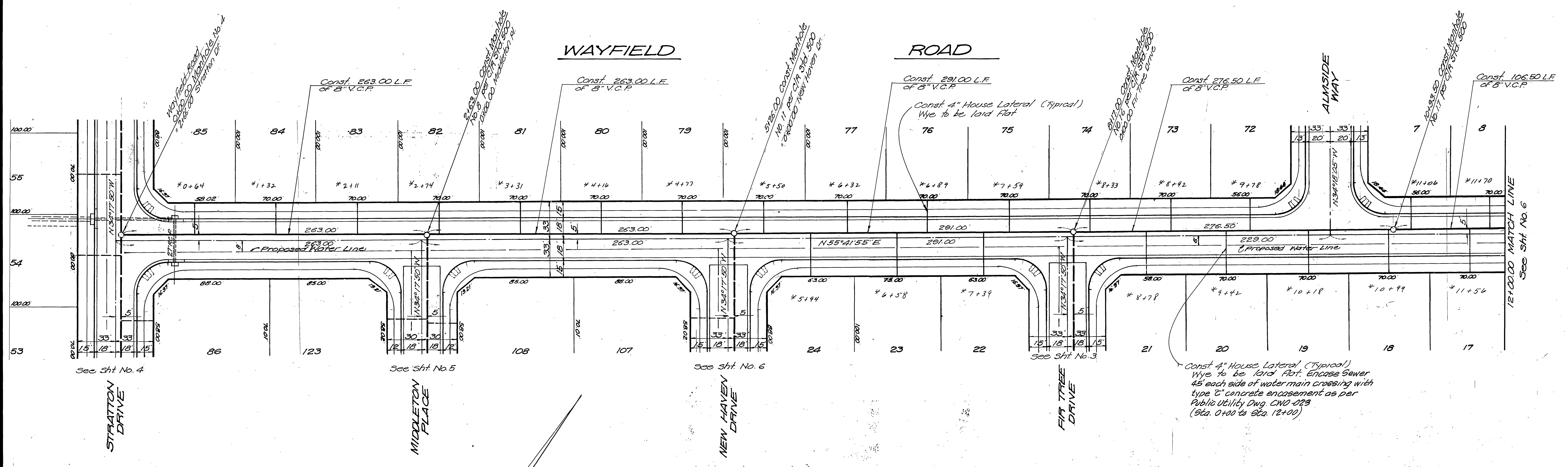
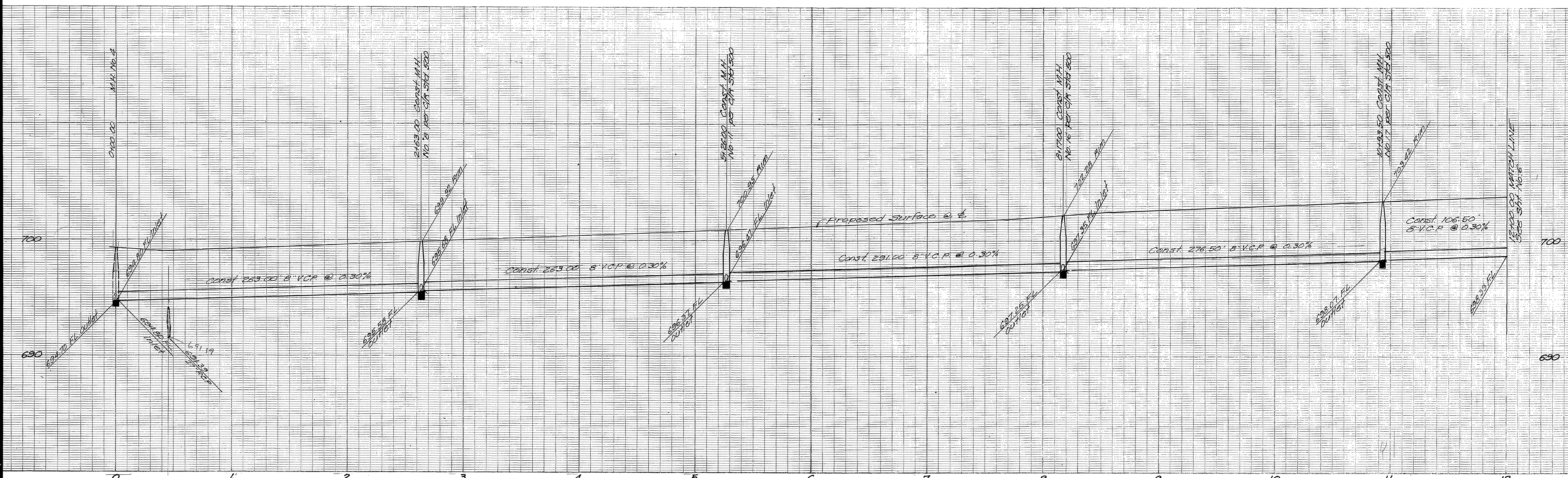
J.P. KAPP & ASSOCIATES, INC.
 501 PARK CENTER DRIVE, SUITE 200
 SANTA ANA, CALIFORNIA 92750
 (714) 547-8445
J.P. Kapp
 P.E. NO. 22015 DATE 4-1-77

MARK	REVISIONS	APPR.	DATE

CITY OF RIVERSIDE, CALIFORNIA
 DEPARTMENT OF PUBLIC WORKS
 APPROVED BY: *William D. Henderson*
 PRINCIPAL ENGINEER DATE 10/19/77
 PARK DEPARTMENT
 TRAFFIC DIVISION
 CHIEF P. W. ENGR.
 DATE 10/19/77

SEWER PLAN AND PROFILE
 TRACT NO. 8203-1
 NEW HAVEN DRIVE
 WAYFIELD ROAD
 HORIZ. SCALE: 1" = 40'
 VERT. SCALE: 1" = 4'

INDEXED R.R.
 PROJECT NO.
 S-1140
 SHEET 6 OF 7
 FILE NO.



BENCH MARK
 R.R. Spike in Power Pole No. 24529 J
 at S.E. Corner La Sierra and Collett
 C/R FB. 378 P. 5
 Elev. 704.25

CITY OF RIVERSIDE
 DOMESTIC SYSTEM
Walter Hylan 9-21-77
 Chief Utilities Engineer, Water Dept

J.P. KAPP & ASSOCIATES, INC.
 501 PARK CENTER DRIVE, SUITE 200
 SANTA ANA, CALIFORNIA 92750
 (714) 547-8445
J.P. Kapp
 F.I.C.E. NO. 22015

4-1-77
 DATE
 DESIGNED BY: DRAWN BY: CHECKED BY:

CITY OF RIVERSIDE, CALIFORNIA
 DEPARTMENT OF PUBLIC WORKS
 APPROVED BY: *William D. Harty*
 DIRECTOR OF PUBLIC WORKS
 DATE 10/19/77

SEWER PLAN AND PROFILE
 TRACT NO. 8203-1
 WAYFIELD ROAD
 HORIZ. SCALE: 1" = 40'
 VERT. SCALE: 1" = 4'

INDEXED R.R. PROJECT NO.
 S-1140
 SHEET 7 OF 7
 FILE NO.