

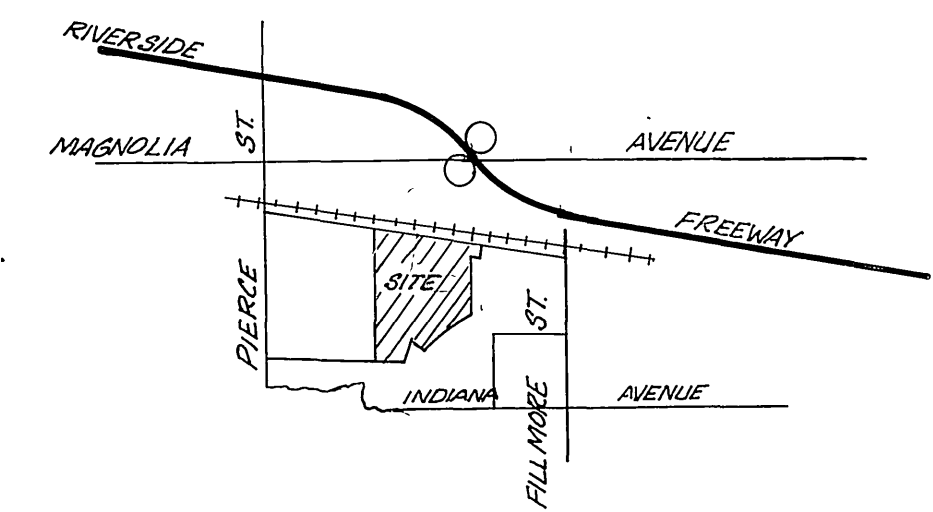
CAUTION EXISTING 30" HIGH PRESSURE GAS LINE

GENERAL NOTES:

1. CONSTRUCTION SHALL BE IN ACCORDANCE WITH STANDARD SPECIFICATIONS FOR PUBLIC WORKS CONSTRUCTION, 1976 EDITION, AND CITY OF RIVERSIDE STD. DWG.
2. IT SHALL BE THE RESPONSIBILITY OF THE CONTRACTOR TO CLEAR THE RIGHT OF WAY IN ACCORDANCE WITH THE PROVISIONS OF LAW AS IT AFFECTS EACH UTILITY INCLUDING IRRIGATION LINES AND APPURTENANCES AND AT NO COST TO THE CITY.
3. LOCATION OF WYES AND LATERALS TO BE DETERMINED AT THE DIRECTION OF THE OWNER.
4. MANHOLE FRAMES AND COVERS TO BE SET TO PROPOSED PAVEMENT GRADES.
5. LATERALS ARE 4" AND EXTEND TO THE PROPERTY LINE.
6. PRIOR TO CONSTRUCTION OF SEWER, CONTRACTOR IS TO EXPOSE EXISTING SEWER AND CONTACT ENGINEER FOR VERIFICATION OF EXISTING ELEVATION.
7. THE SEWER CONTRACTOR SHALL ADJUST MANHOLES TO FINAL GRADES AFTER PAVING IS COMPLETED.
8. A FLUG SHALL BE INSTALLED AND WILL REMAIN IN PLACE WHERE THE NEW SEWER CONNECTS WITH THE EXISTING SEWER UNTIL THE NEW SEWER IS ACCEPTED BY THE CITY.

CONSTRUCTION NOTES

- ① CONSTRUCT MANHOLES PER CITY OF RIVERSIDE PLAN NO. 500
- ② CONSTRUCT CLEANOUT PER CITY OF RIVERSIDE PLAN NO. 560



VICINITY MAP
NO SCALE

BENCH MARK

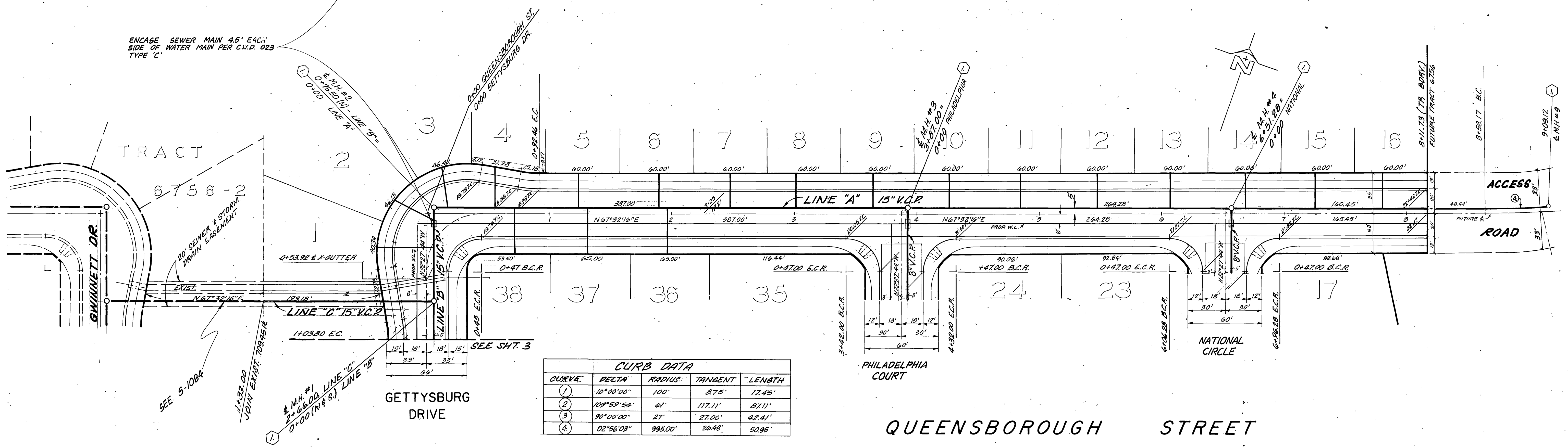
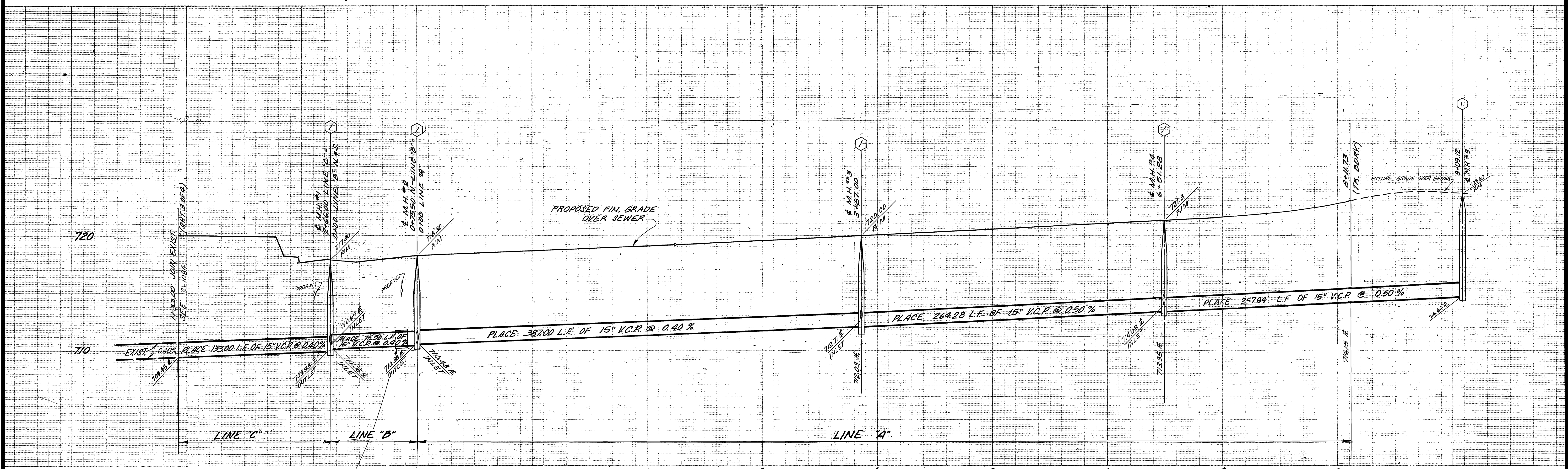
U.S.C. & G.S. B.M. K-38 1924 DISC IN HEADWALL ON N.W. CORNER OF FILLMORE & S.F.R.R. TRACKS P.B. 706/34 ELEV. 722.010

NOTICE TO CONTRACTOR:

THE EXISTENCE AND LOCATION OF ANY UNDERGROUND UTILITY PIPES OR STRUCTURES SHOWN ON THESE PLANS ARE OBTAINED BY A SEARCH OF AVAILABLE RECORDS. TO THE BEST OF OUR KNOWLEDGE THERE ARE NO EXISTING UTILITIES EXCEPT AS SHOWN ON THESE PLANS. THE CONTRACTOR IS REQUIRED TO TAKE PRECAUTIONARY MEASURES TO PROTECT THE UTILITY LINES SHOWN AND OTHER LINES NOT OF RECORD OR NOT SHOWN ON THESE PLANS.

THE PRIVATE ENGINEER SIGNING THESE PLANS IS RESPONSIBLE FOR ASSURING THE ACCURACY AND ACCEPTABILITY OF THE WORK HEREON. IN THE EVENT OF DISCREPANCIES ARISING DURING CONSTRUCTION AS A RESULT OF ERRORS OR OMISSIONS, THE PRIVATE ENGINEER SHALL BE RESPONSIBLE FOR DETERMINING AN ACCEPTABLE SOLUTION AND REVISING THE PLANS FOR APPROVAL BY THE CITY.

<p style="text-align: center;">CITY OF RIVERSIDE, DOMESTIC SYSTEM</p> <p style="text-align: center;">J. F. DAVIDSON ASSOCIATES CIVIL ENGINEERS - SURVEYORS - PLANNERS RIVERSIDE, CALIFORNIA</p> <p>APPROVED BY <i>J. F. Davidson</i> DATE 3/28/77 R.E. No. 17550</p>	<p style="text-align: center;">CITY OF RIVERSIDE, CALIFORNIA DEPARTMENT OF PUBLIC WORKS</p> <p>APPROVED BY <i>[Signature]</i> DATE 10/21/77 OFFICE ENGINEER TRAFFIC DIVISION ASSISTANT CITY ENG. <i>[Signature]</i> DATE 10-31-77</p>	<p style="text-align: center;">SEWER PLAN AND PROFILE</p> <p style="text-align: center;">TITLE SHEET TRACT 6756-4</p>	<p style="text-align: center;">INDEXED R.R. PROJECT NO.</p> <p style="text-align: center;">S-1141</p> <p style="text-align: center;">SHEET 1 OF 5 FILE NO.</p>
<p>DESIGNED BY _____ DRAWN BY _____ CHECKED BY _____</p>		<p>DATE 10-31-77</p>	



CURB DATA

CURVE	DELTA	RADIUS	TANGENT	LENGTH
(1)	10°00'00"	100'	8.75'	17.45'
(2)	10°59'54"	61'	117.11'	87.11'
(3)	90°00'00"	27'	27.00'	42.41'
(4)	02°56'03"	995.00'	26.48'	50.95'

BENCH MARK
 U.S.C. & G.S. B.M. K-30 1024 DISC IN HEADWALL
 ON N.W. CORNER FILLMORE & S.F.R. TRACKS
 F.D. 700/34. ELEV. 722.010'

SEE SHEET NO. 1 FOR CONSTRUCTION NOTES

J. F. DAVIDSON ASSOCIATES
 CIVIL ENGINEERS - SURVEYORS - PLANNERS
 RIVERSIDE, CALIFORNIA

APPROVED BY: *[Signature]* DATE 3/20/77
 R.E. No. 11550

By: *[Signature]* 10-26-77
 CHIEF UTILITIES ENGINEER, WATER DATE

CITY OF RIVERSIDE, CALIFORNIA
 DEPARTMENT OF PUBLIC WORKS

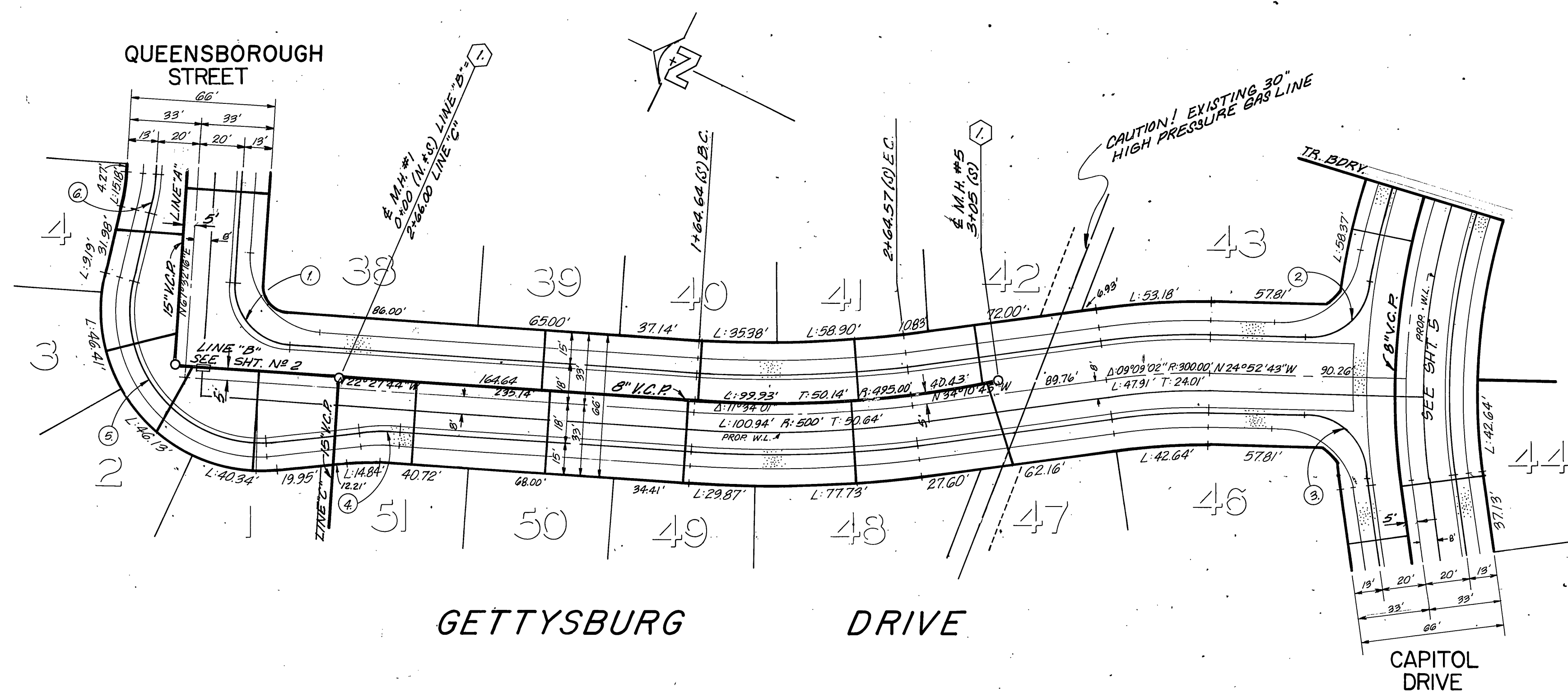
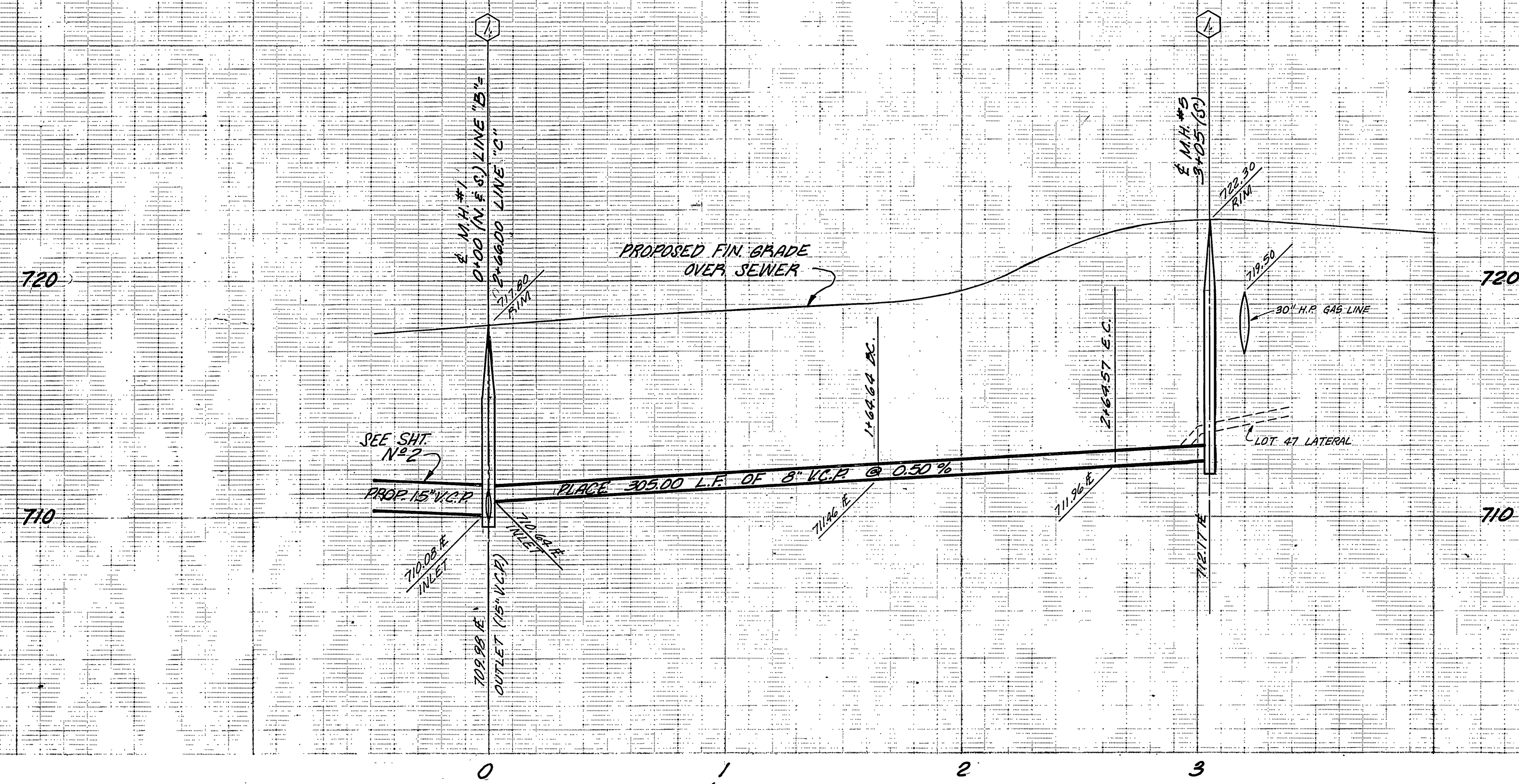
APPROVED BY: *[Signature]* APPROVED BY: *[Signature]*
 PRINCIPAL ENGINEER PARK DEPARTMENT DIRECTOR OF PUBLIC WORKS

TRAFFIC DIVISION
 CHIEF P. W. ENGR. *[Signature]* DATE 10-31-77

SEWER PLAN AND PROFILE
 TRACT 6756-4
QUEENSBOROUGH ST.

HORIZ. SCALE: 1" = 40' VERT. SCALE: 1" = 4'

INDEXED P.R.
 PROJECT NO. **S-1141**
 SHEET 2 OF 5
 FILE NO.



BENCH MARK

U.S.C. & G.S. B.M. K-38 1984 DISC IN HEADWALL
ON N.W. CORNER FILLMORE & S.F.R.R. TRACKS
F.D. 706/34 ELEV. 722.210'

APPROVED FOR
SOUTHERN CALIFORNIA GAS COMPANY

By: *J.F. Davidson* 9/27/77
DATE

CITY OF RIVERSIDE, DOMESTIC SYSTEM

By: *W.H. Hill* 10-26-77
CHIEF UTILITIES ENGINEER, WATER DATE

SEE SHEET NO. 1 FOR CONSTRUCTION NOTES

J. F. DAVIDSON ASSOCIATES
CIVIL ENGINEERS - SURVEYORS - PLANNERS
RIVERSIDE, CALIFORNIA

APPROVED BY: *J.F. Davidson* DATE 3/28/77
R.E. No. 17550

W.O. FOR: F.B.

CITY OF RIVERSIDE, CALIFORNIA
DEPARTMENT OF PUBLIC WORKS

APPROVED BY: *[Signature]*
PRINCIPAL ENGINEER
PARK DEPARTMENT
TRAFFIC DIVISION
CHIEF P. W. ENGR.

DATE 10-31-77

SEWER PLAN AND PROFILE

TRACT 6756-4
GETTYSBURG DR.

HORIZ. SCALE: 1" = 40' VERT. SCALE: 1" = 4'

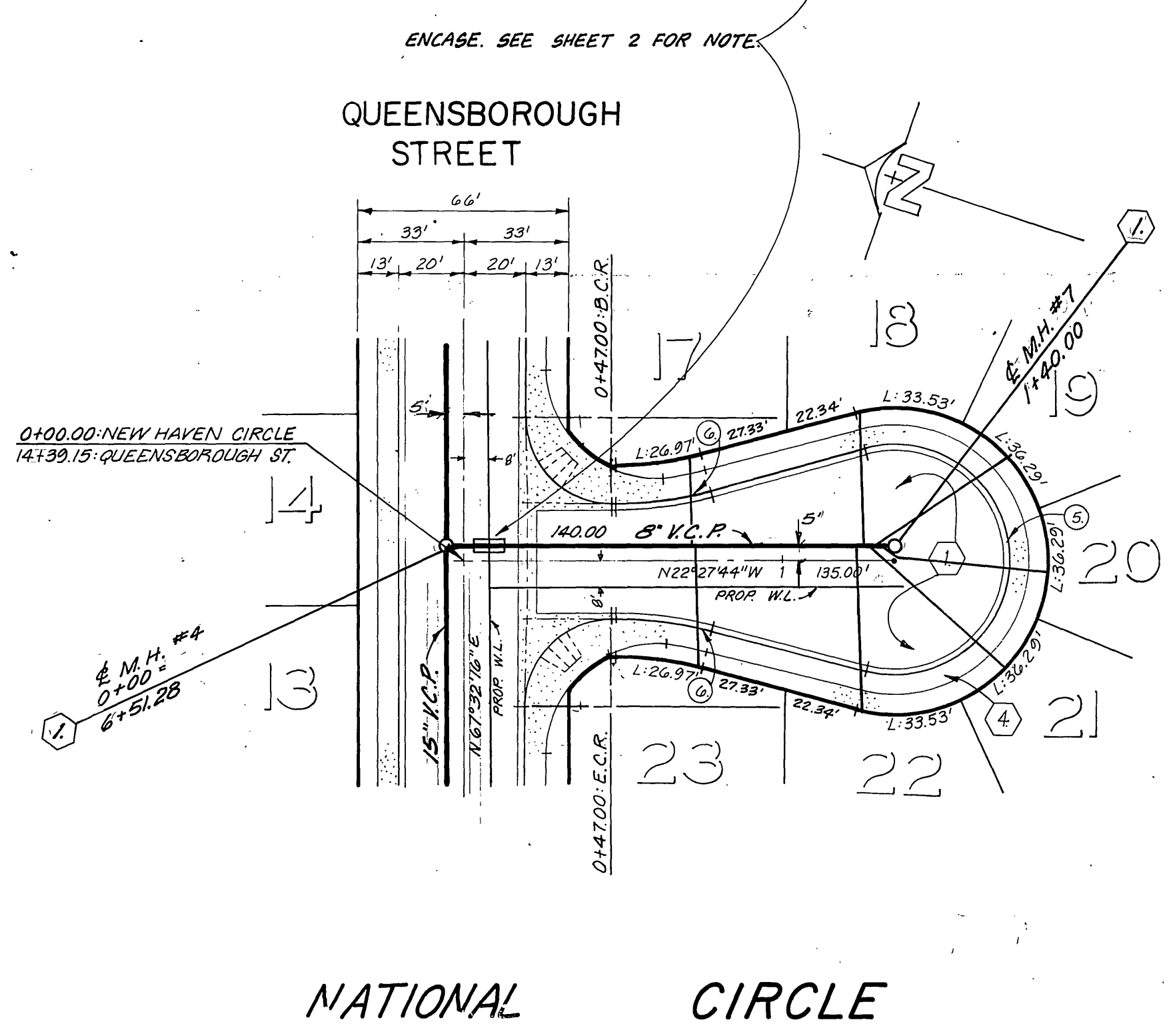
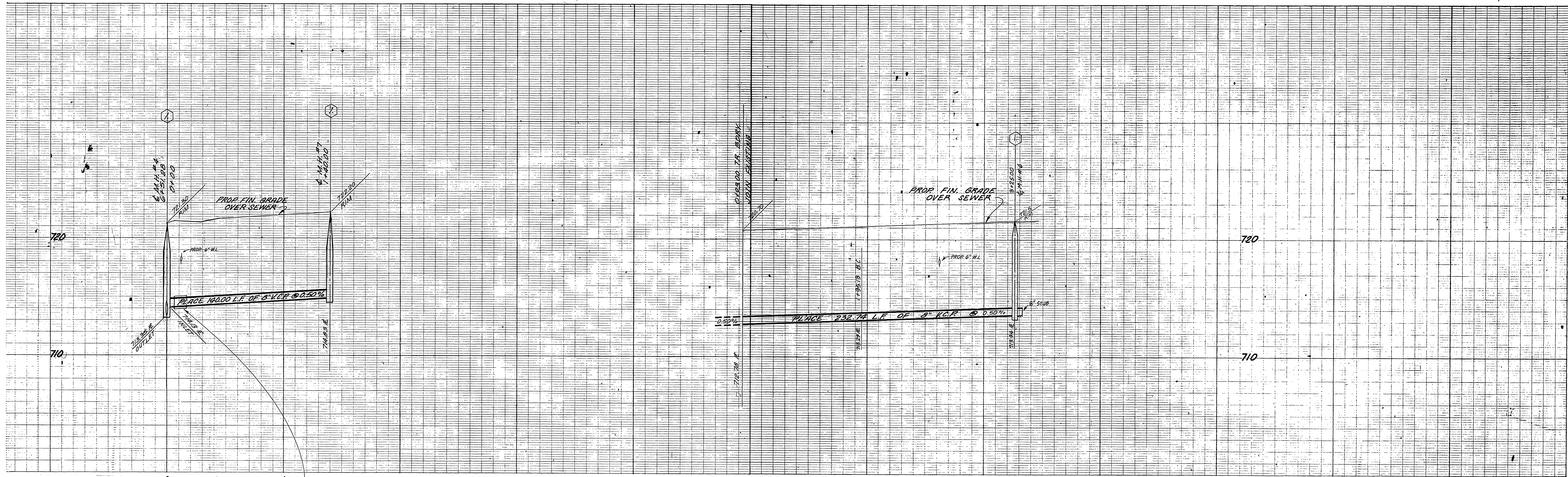
INDURED S.O.

PROJECT NO.

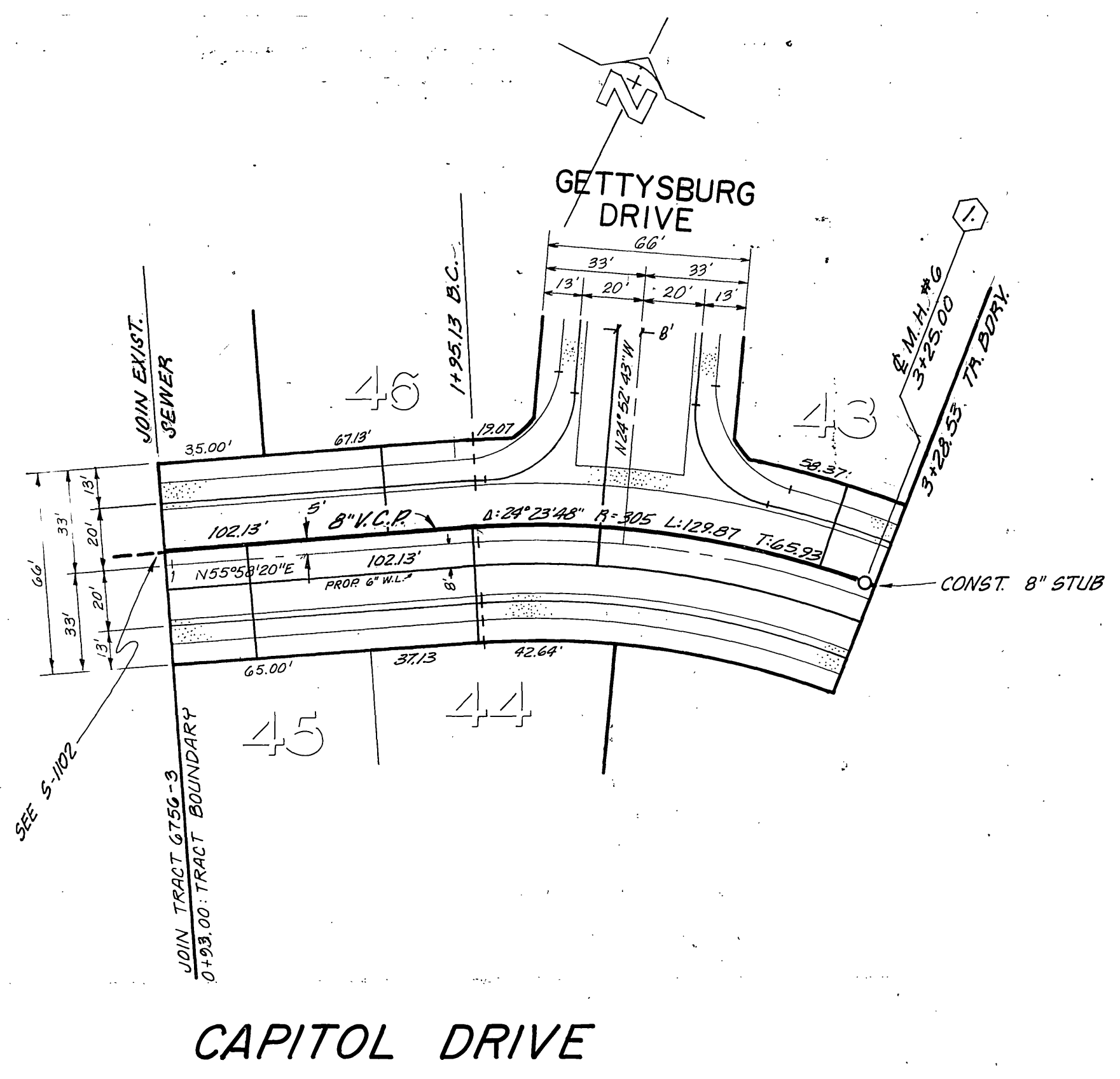
S-1141

SHEET 3 OF 5

FILE NO.



NO.	R	Δ	L	T
①	300.00'	28°52'10"	154.16'	77.22'
②	320.00'	28°52'10"	161.24'	82.37'
③	280.00'	28°52'10"	141.08'	72.01'
④	27.00'	90°00'00"	42.41'	27.00'
⑤	31.00'	210°00'00"	131.95'	27.00'
⑥	115.00'	15°00'00"	30.11'	15.14'



BENCH MARK
 U.S.C. & G.S. O.M. K-38 1924 DISC IN HEADWALL
 ON NW CORNER FILLMORE & S.F.R. TRACKS
 F.B. 706/34 ELEV 722.01'

SEE SHEET NO. 1 FOR CONSTRUCTION NOTES.

CITY OF RIVERSIDE, DOMESTIC SYSTEM J. F. DAVIDSON ASSOCIATES CIVIL ENGINEERS - SURVEYORS - PLANNERS RIVERSIDE, CALIFORNIA APPROVED BY: <i>John W. Coffey</i> DATE 3/28/77 R.E. No. 17550	CITY OF RIVERSIDE, CALIFORNIA DEPARTMENT OF PUBLIC WORKS APPROVED BY: <i>James G. ...</i> PRINCIPAL ENGINEER PARK DEPARTMENT TRAFFIC DIVISION CHIEF P. W. ENGR.	SEWER PLAN AND PROFILE TRACT 6756-4 NATIONAL CIRCLE CAPITOL DRIVE	INDEXED R.A. PROJECT NO. 5-1141 SHEET 5 OF 5
		HORIZ. SCALE: 1" = 40' VERT. SCALE: 1" = 4'	FILE NO.