

GENERAL NOTES:

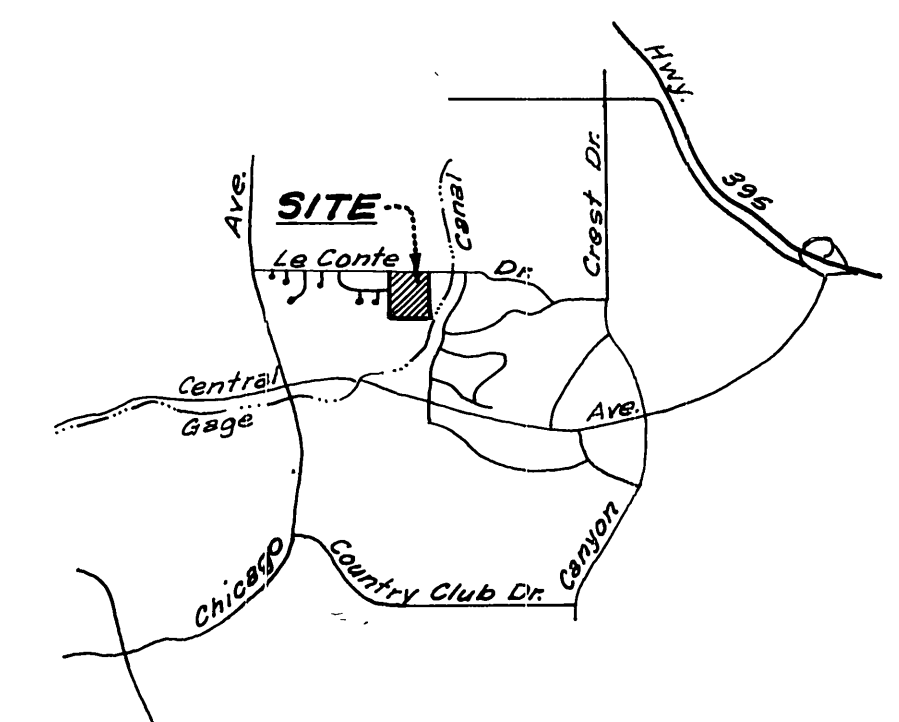
1. The private engineer signing these plans is responsible for accuracy and acceptability of the work hereon. In the event of discrepancies arising during construction, the private engineer shall be responsible for determining a acceptable solution and revising the plans for approval by the city.
2. Construction shall be in accordance with Standard Specifications for Public Works Construction, 1976 Edition, and City of Riverside Standard drawings.
3. It shall be the responsibility of the contractor to clear the right of way in accordance with provisions of law as it affects each utility including irrigation lines and appurtenances and at no cost to the city.
4. Pipe shall be bedded per Case 1 Standard Drawing No. 452 unless otherwise specified on plans.
5. Location of Wyes and Laterals to be determined at the direction of the owner.
6. All stubs and laterals to be constructed in accordance with Standard Drawing No. 562. Stubs to be plugged and capped.
7. The sewer contractor shall adjust Manholes to final grade after paving is completed.
8. Laterals are to be 4" and extended to property line.
9. Encase Sewer 4.5' each side of proposed water line crossing per Public Utilities Dwg. C.W.D. 023 Type B.
10. Plugs shall be installed and will remain in place where the new sewer connects with the existing sewer until such time as the new sewer is accepted by the city.
11. Contractor is to expose and verify elevation of existing 8" U.C.P. before installing and sewer lines.

NOTICE TO CONTRACTORS:

The existence and location of underground utility pipes or structures shown on these plans are obtained by a search of the available records. To the best of our knowledge there are no existing utilities except as shown on these plans. The Contractor is required to take due precautionary measures to protect the utility lines not of record or not shown on these plans.

BENCH MARK:

Sta. Martinek - Brass Disc in concrete on small raised earth area on Westerly side of Chicago Ave. at Le Conte Ave. Point is 55' South of Pole #1927.1 and 35.4' Westerly of existing berm of Chicago Ave. F.B. 85764, Elev. 984.900



LOCATION MAP

CITY OF RIVERSIDE DOMESTIC SYSTEM APPROVED BY <i>Wesley Ogden</i> CHIEF UTILITIES ENGINEER, WATER DATE 6-3-77	ALBERT A. WEBB ASSOCIATES CIVIL ENGINEERS RIVERSIDE, CALIFORNIA APPROVED BY <i>P. A. Webb</i> DATE 5/12/77 R.E. No. 9876	CITY OF RIVERSIDE, CALIFORNIA PUBLIC WORKS DEPARTMENT APPROVED BY <i>Tom Aschbach</i> DIRECTOR OF PUBLIC WORKS DATE 11-9-77	SEWER PLAN & PROFILE TRACT NO. 7924-1 INDEX SHEET	ACCOUNT NO. DRAWING NUMBER S-1145 SHEET 1 OF 4 76-355 B
			DESIGNED BY REC. DRAWN BY MWP. CHECKED BY SCALE: 1" = 100'	REVISIONS MARKS

1010

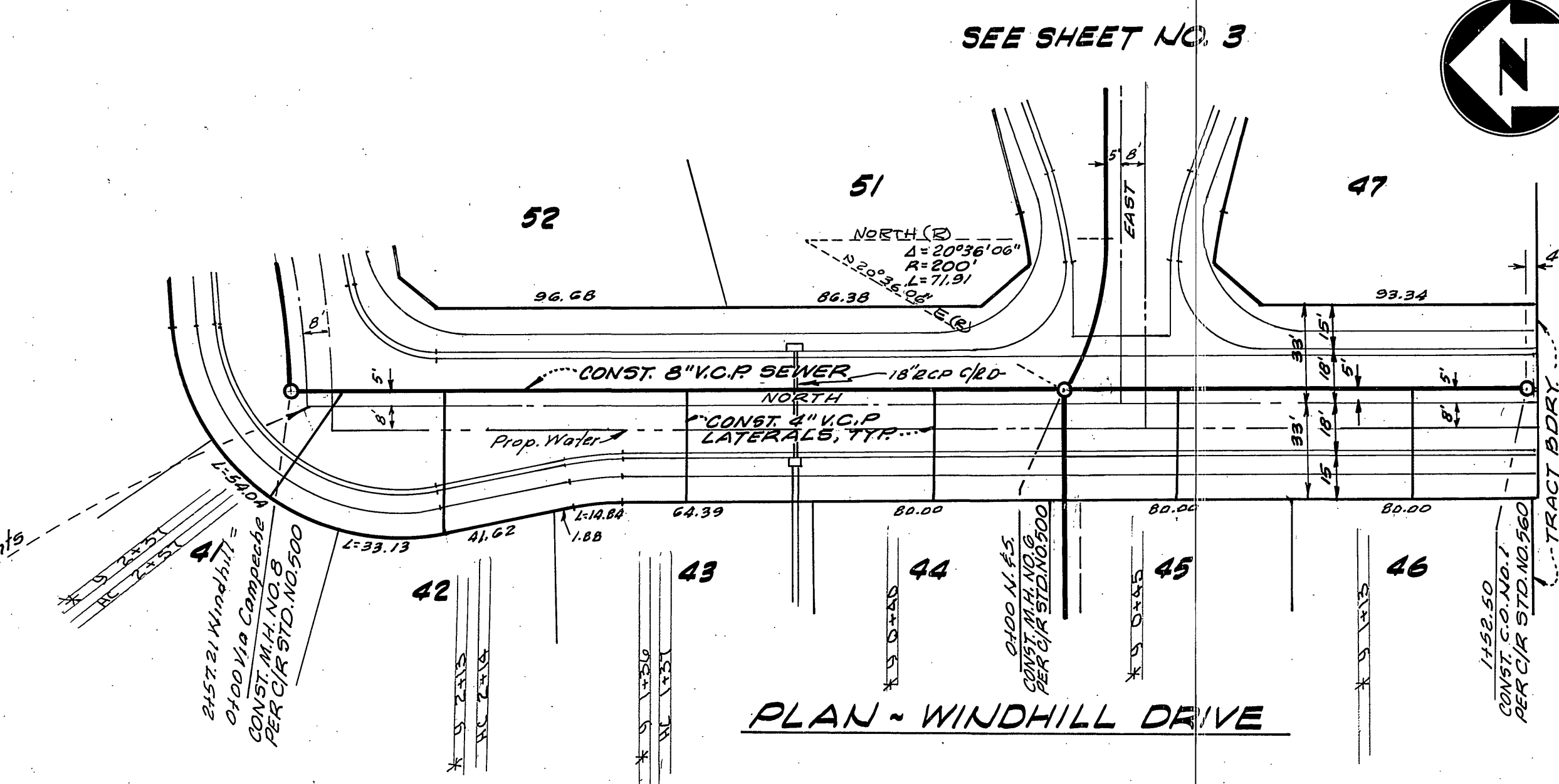
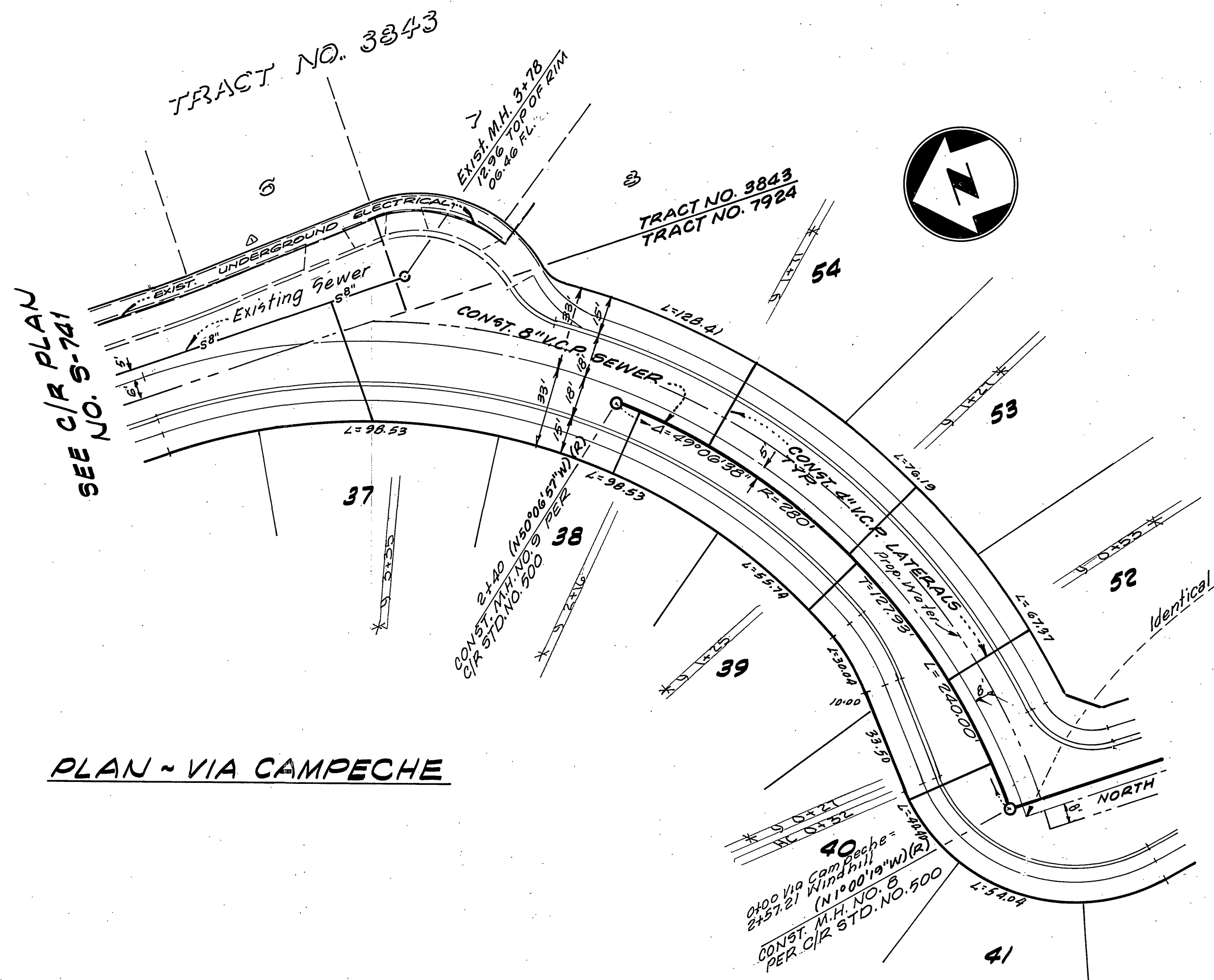
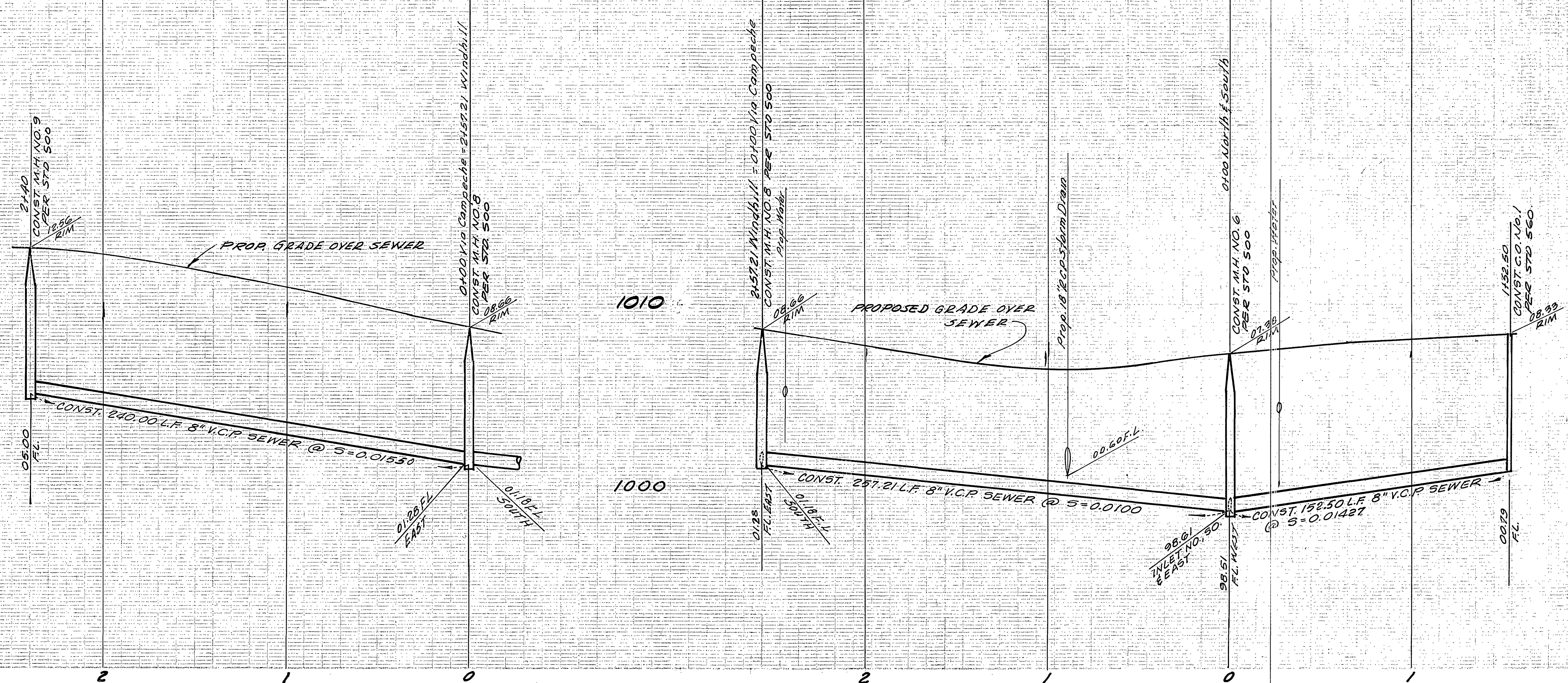
1000

1010

1000

1010

1000



BENCH MARK:
Sta. Martinek-Brass disc in Conc. on small raised earth area on Westery side of Chicago Ave. at Le Conte Ave. Point is 35.7' Southerly of Pole # 19037 and 35.4' Westery of existing berm of Chicago Ave F.B. 851/64 Elevation 984.90

CITY OF RIVERSIDE
DOMESTIC SYSTEM
APPROVED BY:
Walter J. Hoffman 6-3-77
CHIEF UTILITIES ENGINEER, WATER DATE

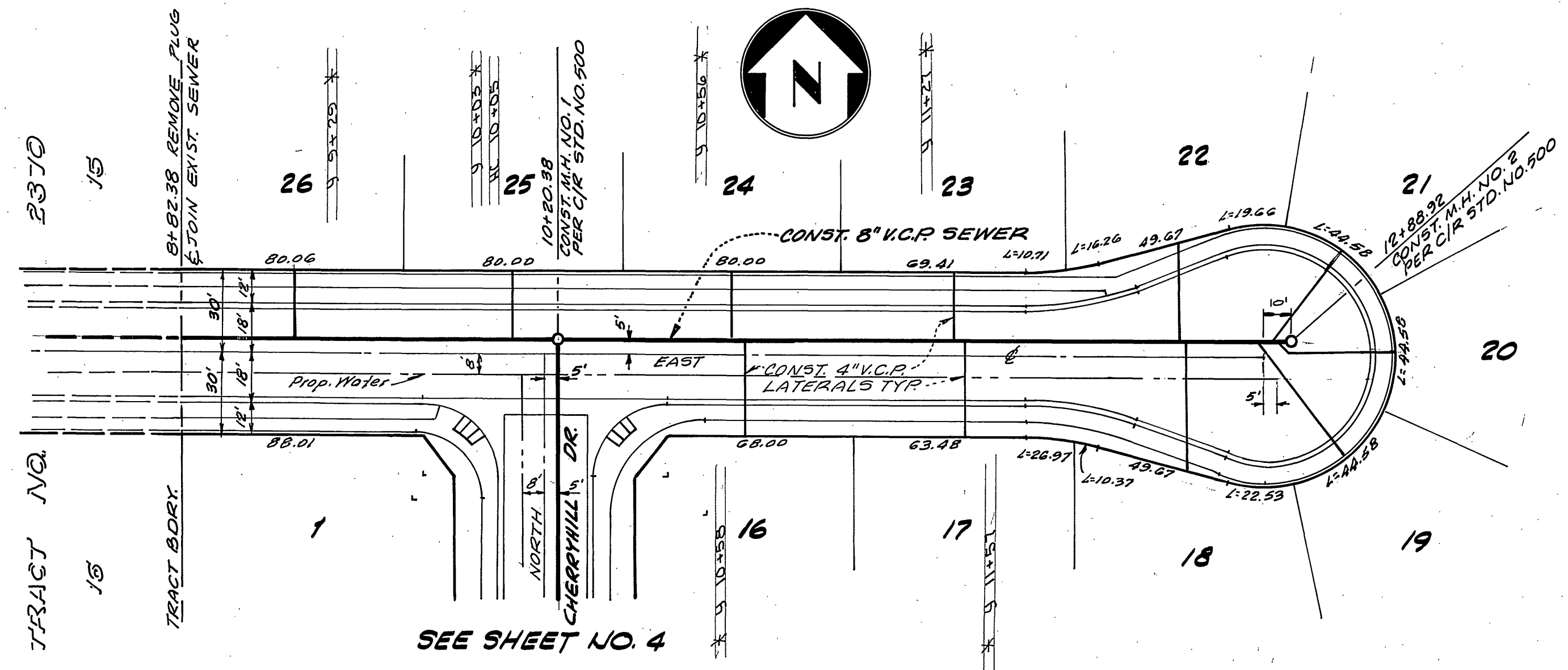
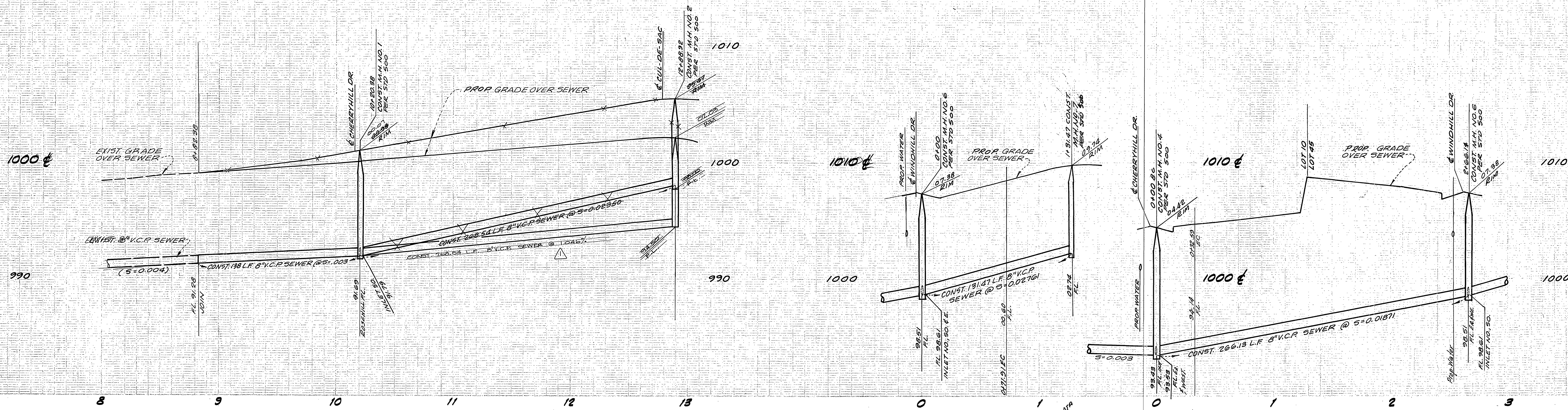
ALBERT A. WEBB ASSOCIATES
CIVIL ENGINEERS
RIVERSIDE, CALIFORNIA
APPROVED BY: *Albert A. Webb* DATE 5/14/77
R.E. No. 2876

MARK	REVISIONS	APPR. DATE

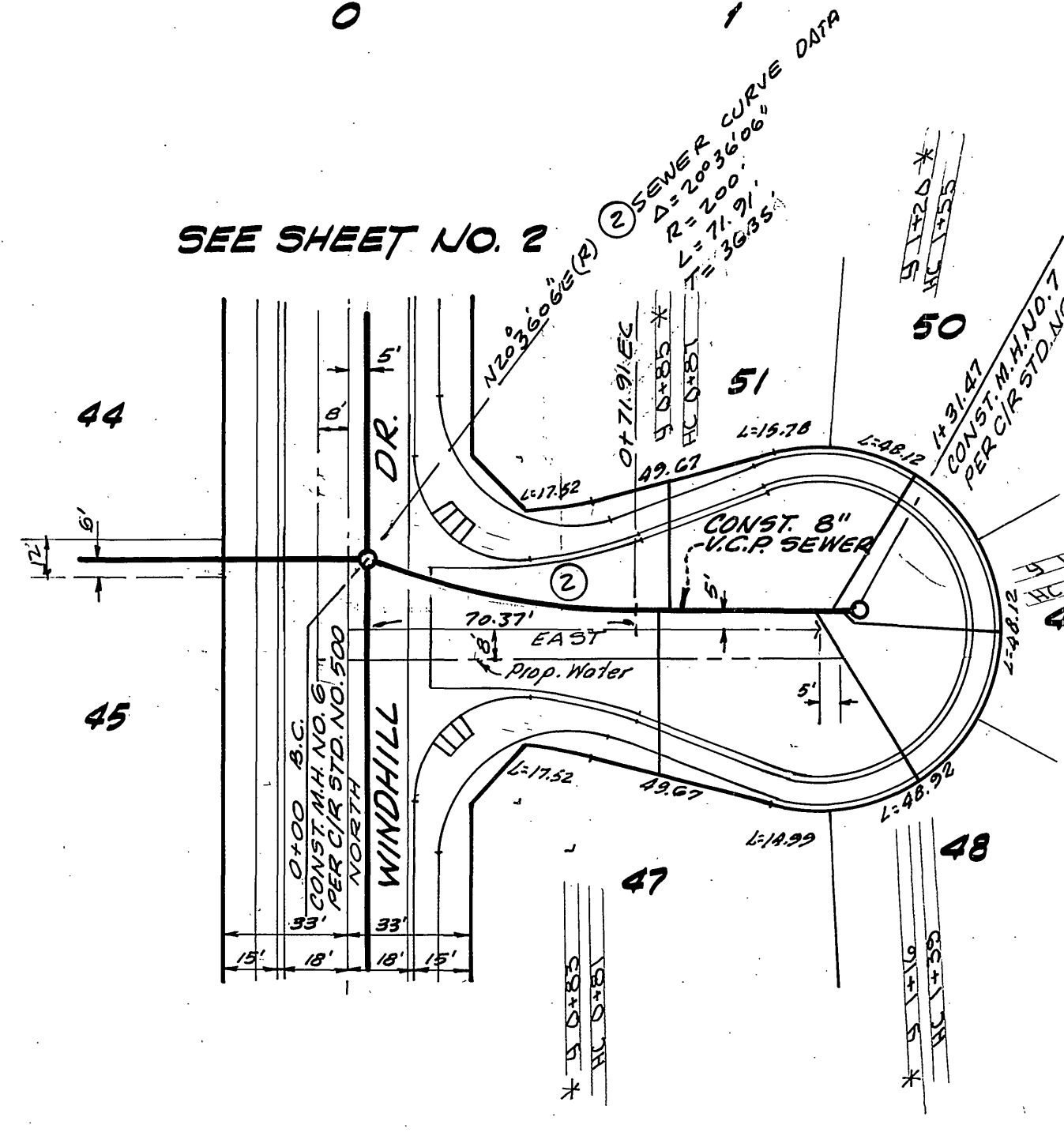
CITY OF RIVERSIDE, CALIFORNIA
PUBLIC WORKS DEPARTMENT
APPROVED BY: *J. J. [Signature]*
PRINCIPAL ENGINEER
PARK DEPARTMENT
TRAFFIC DIVISION
CHIEF PUB. WKS. ENGR.
DATE 11-9-77

SEWER PLAN & PROFILE
TRACT NO. 7924-1
VIA CAMPECHE
WINDHILL DRIVE
SCALE: Horiz. 1"=40' Vert. 1"=4'

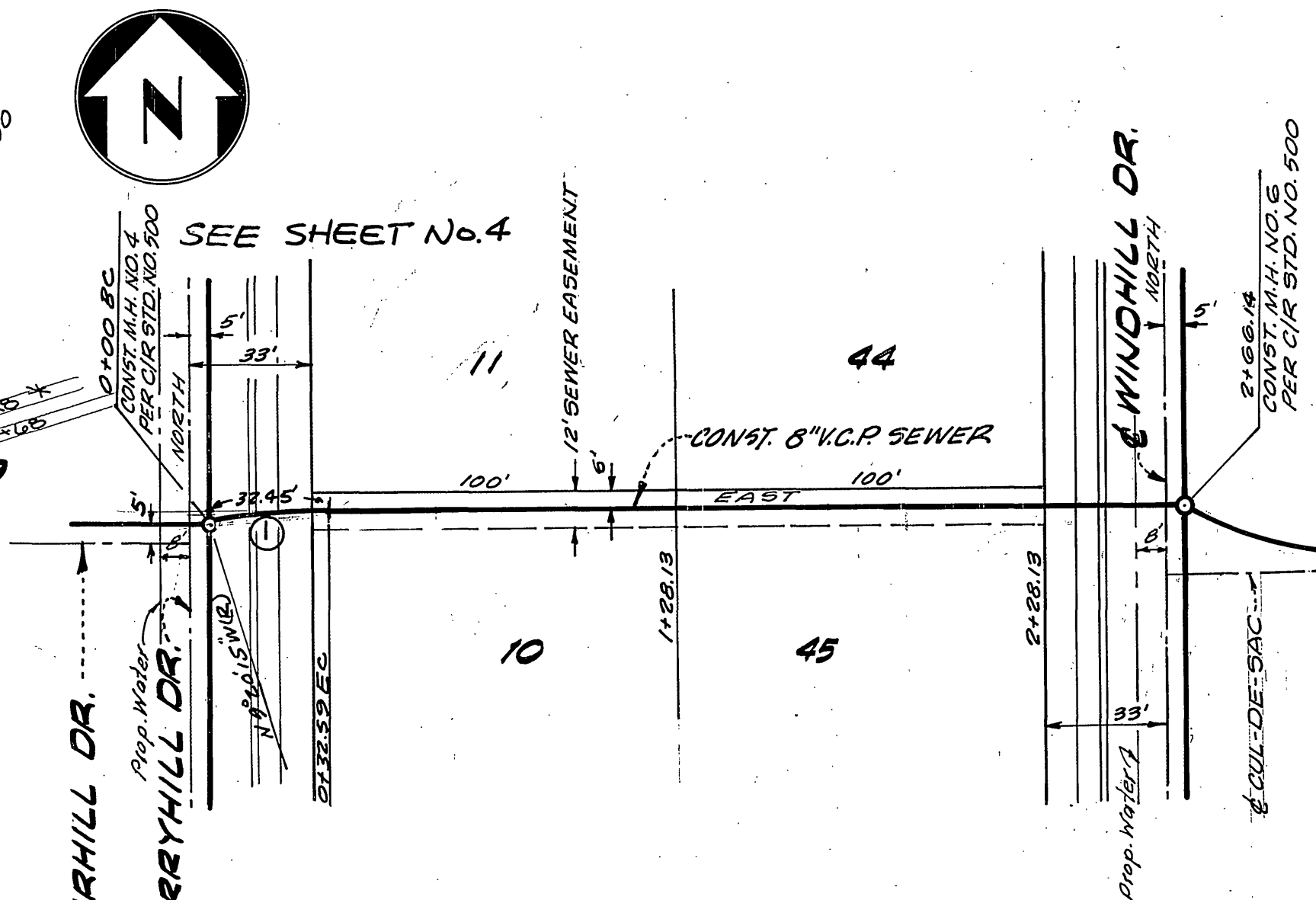
INDEXED & R.
ACCOUNT No. **S-1145**
DRAWING NUMBER
SHEET **2** OF **4**
76-355 B



PLAN - ROSEHILL DRIVE



PLAN - WINDHILL DRIVE



SEWER CURVE DATA
 ① $\Delta=9^{\circ}26'15''$ $R=200'$ $L=32.59'$ $T=14.33'$

BENCH MARK:
 Sta. Martnek - Brass disc in Conc. on small raised earth area on
 Westerly side of Chicago Ave at Le Conte Ave. Point is 35' S. Southerly
 of Pole # 190371 and 35' W. Westerly of existing berm of Chicago Ave.
 FB 857164 Elevation 984.90

SEE C/A PLAN
 NO. 5-353

SEE SHEET NO. 4

SEE SHEET NO. 2

SEE SHEET NO. 4

CITY OF RIVERSIDE
 DOMESTIC SYSTEM
 APPROVED BY:
Walter Fisher 6-3-77
 CHIEF UTILITIES ENGINEER, WATER, DATE

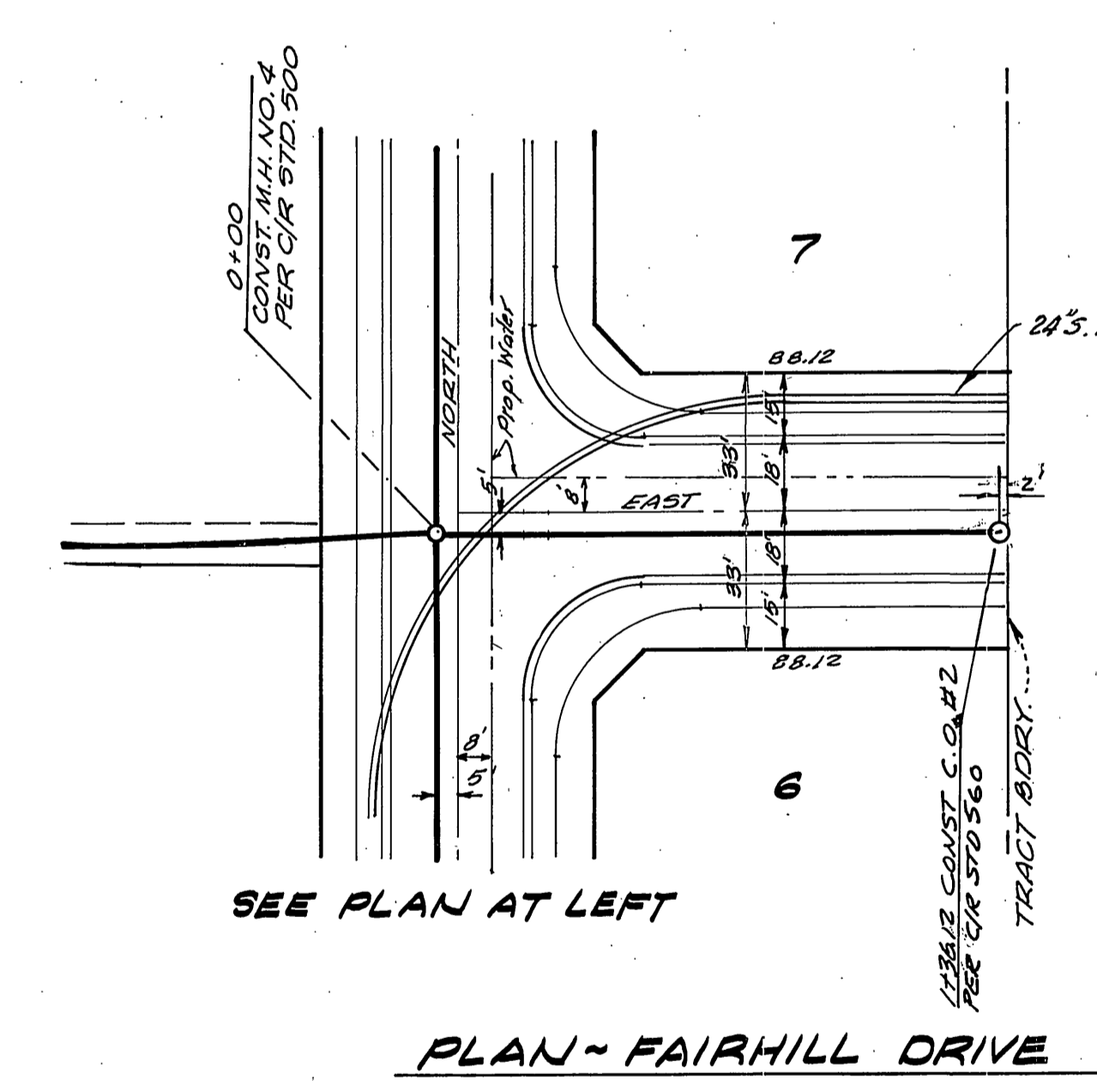
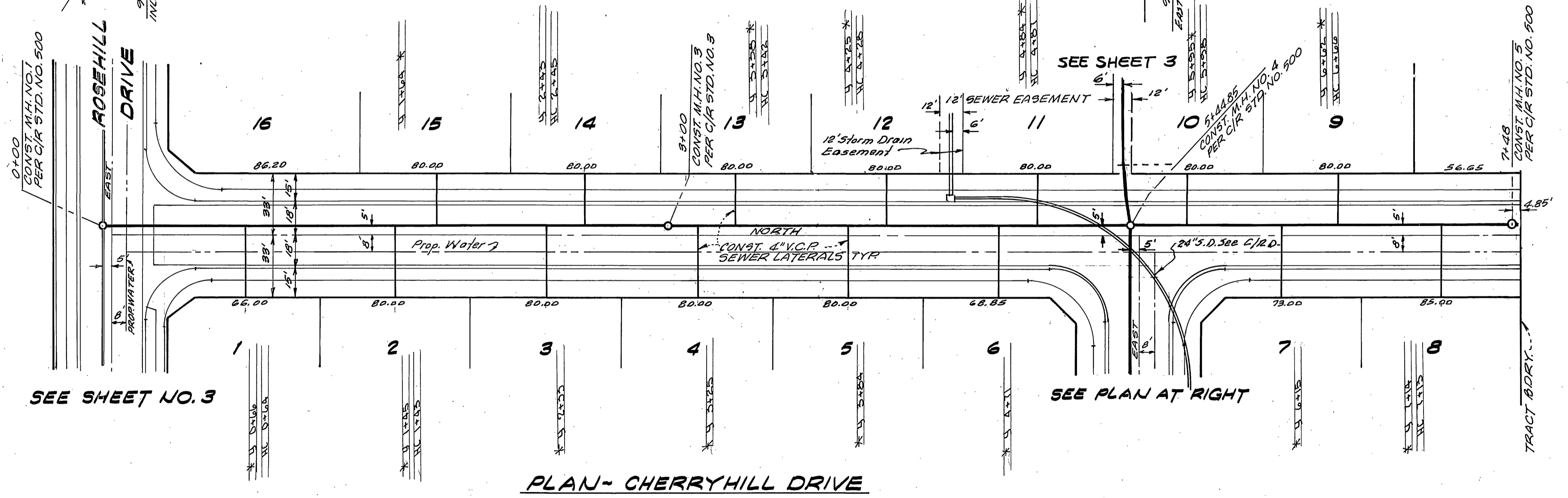
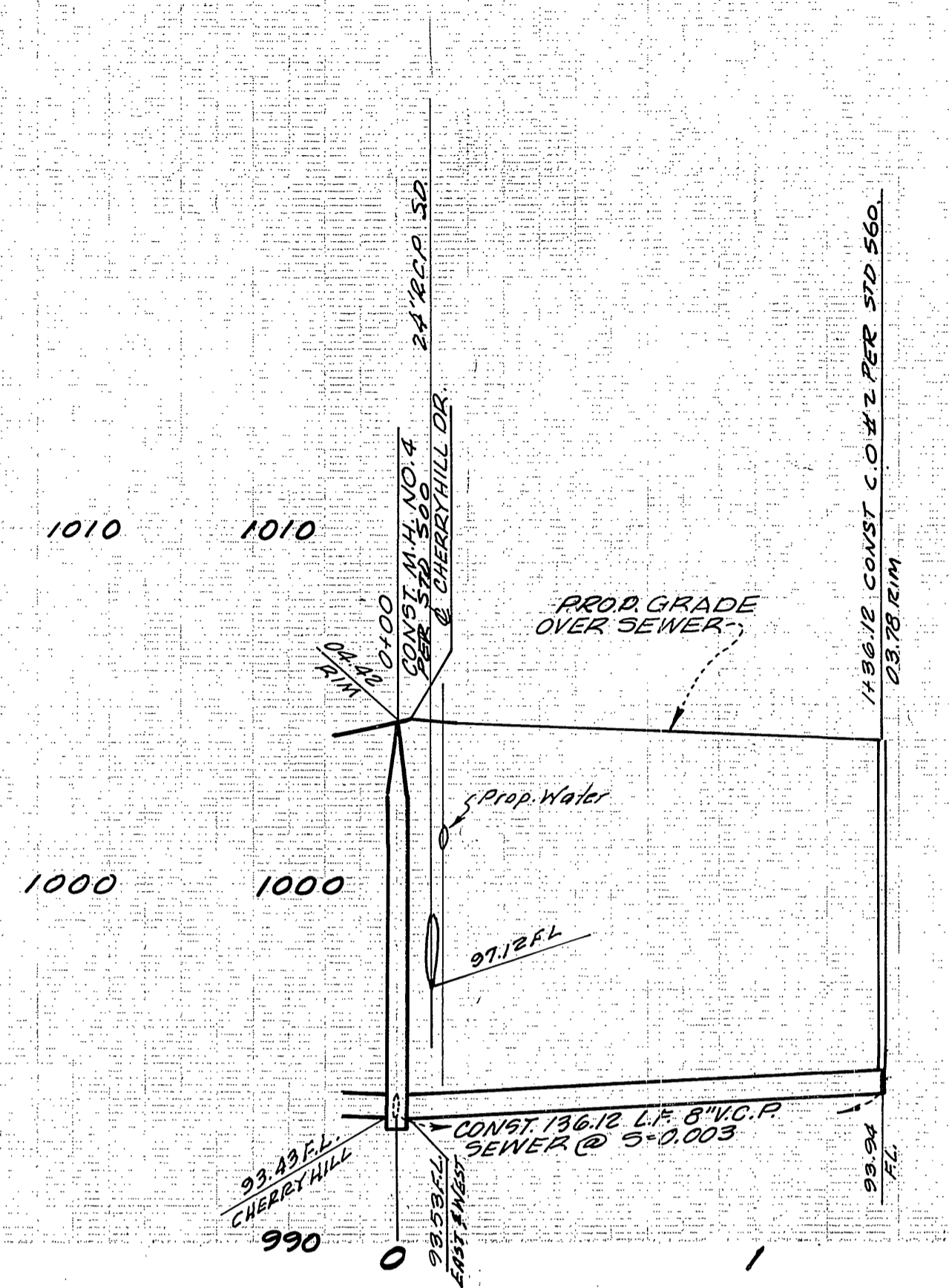
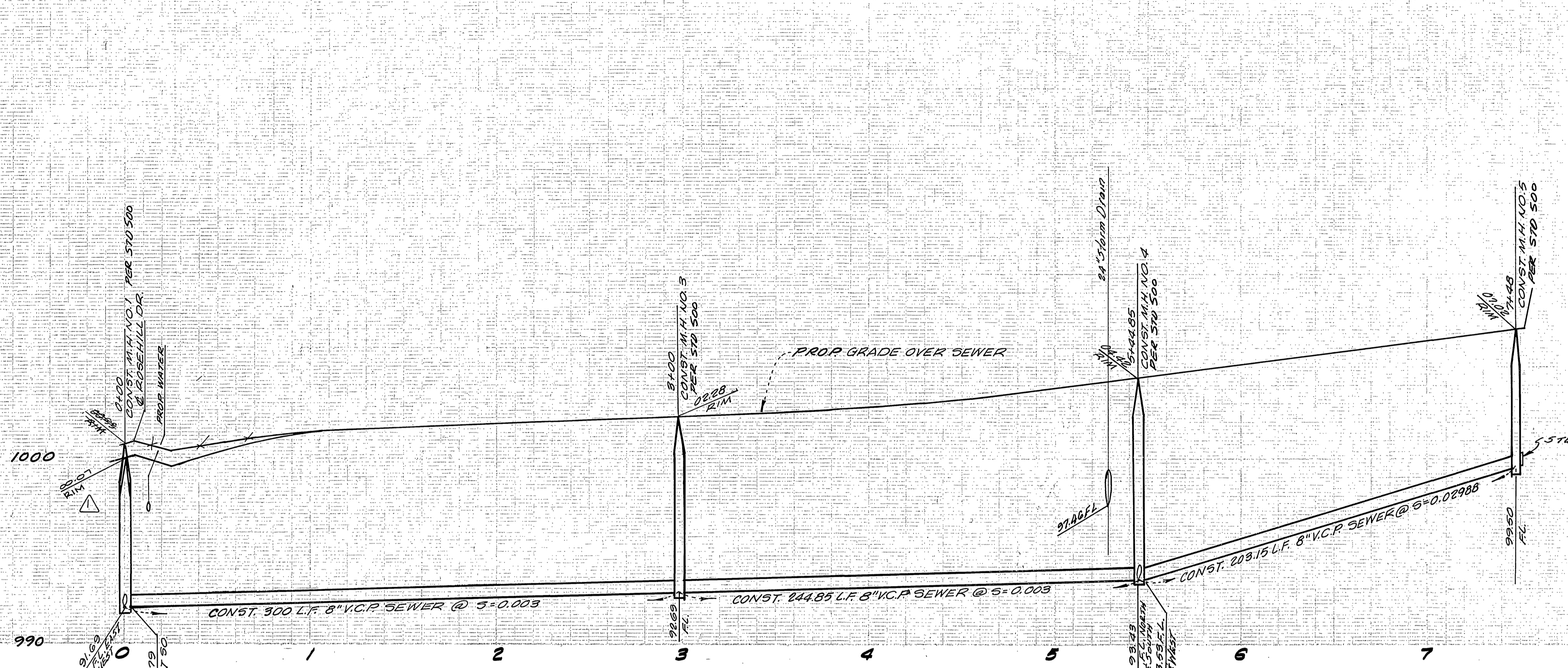
ALBERT A. WEBB ASSOCIATES
 CIVIL ENGINEERS
 RIVERSIDE, CALIFORNIA
 APPROVED BY: *Paul H. Webb* DATE 5/2/77
 R.E. No. 9876

MARK REVISIONS
 1. WINDHILL SEWER ROSEHILL DR. ENH. 5/16/78
 DESIGNED BY R.E.C. DRAWN BY W.F.P. CHECKED BY W.F.P.

CITY OF RIVERSIDE, CALIFORNIA
 PUBLIC WORKS DEPARTMENT
 APPROVED BY: *John A. Brown*
 PRINCIPAL ENGINEER
 PARK DEPARTMENT
 TRAFFIC DIVISION
 CHIEF PUB. WKS. ENGR. DATE 11-9-77

SEWER PLAN & PROFILE
 TRACT NO. 7924-1
 ROSEHILL DRIVE
 WINDHILL DRIVE
 SEWER EASEMENT
 SCALE: Horiz. 1"=40' Vert. 1"=4'

INDEXED & R
 ACCOUNT No.
 DRAWING NUMBER
 5-1145
 SHEET 3 OF 4
 76-355 B



BENCH MARK:
Sta. Martinek - Brass disc in Conc. on small raised earth area on Westery side of Chicago Ave. at Le Conte Point is 35' Southerly of Pole # 19037 and 35.4' Westerly of existing berm of Chicago Ave. FB 85764. Elevation 984.90

CITY OF RIVERSIDE DOMESTIC SYSTEM APPROVED BY: <i>Walter Ayler</i> CHIEF UTILITIES ENGINEER, WATER DATE 6-3-77	ALBERT A. WEBB ASSOCIATES CIVIL ENGINEERS RIVERSIDE, CALIFORNIA APPROVED BY: <i>L. A. Webb</i> DATE 5/14/77 R.E. No. 2876	CITY OF RIVERSIDE, CALIFORNIA PUBLIC WORKS DEPARTMENT APPROVED BY: <i>James Beck</i> DIRECTOR OF PUBLIC WORKS DATE 11-9-77	SEWER PLAN & PROFILE TRACT NO. 7924-1 CHERRYHILL DRIVE FAIRHILL DRIVE SCALE: Horiz. 1"=40' Vert. 1"=4'	ACCOUNT No.
				DRAWING NUMBER 5-1145 SHEET 4 OF 4 76-355B

* AS BUILT 1/26/78 PER