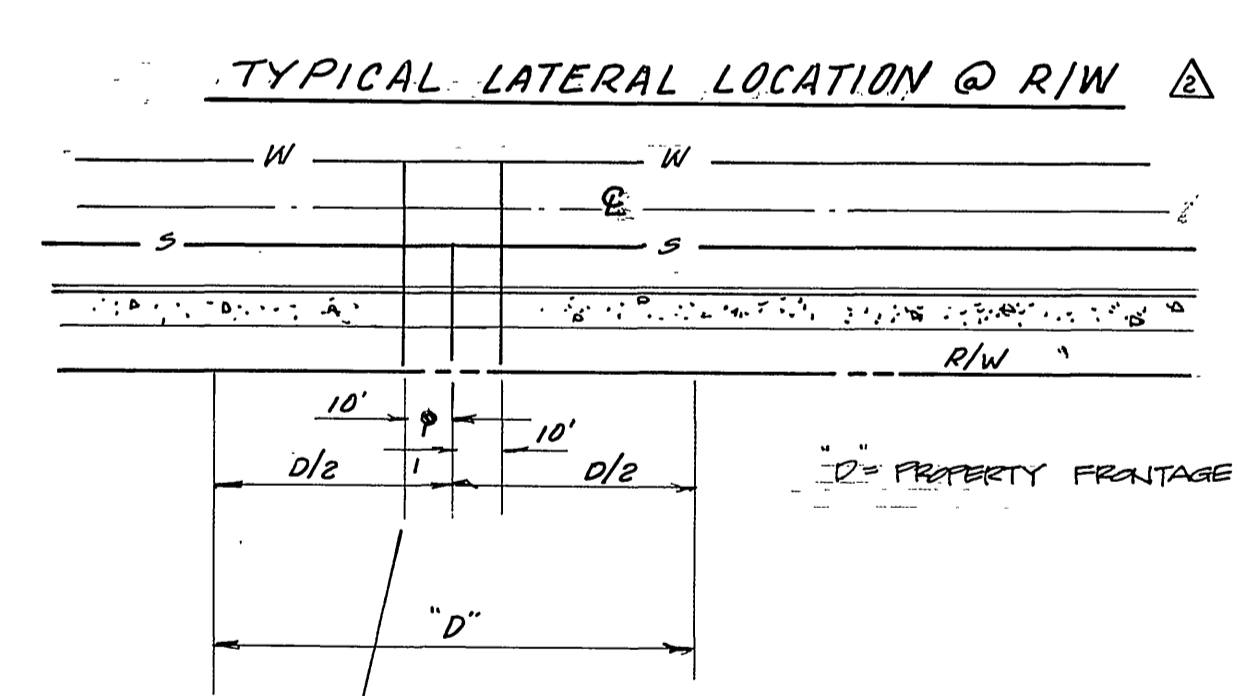
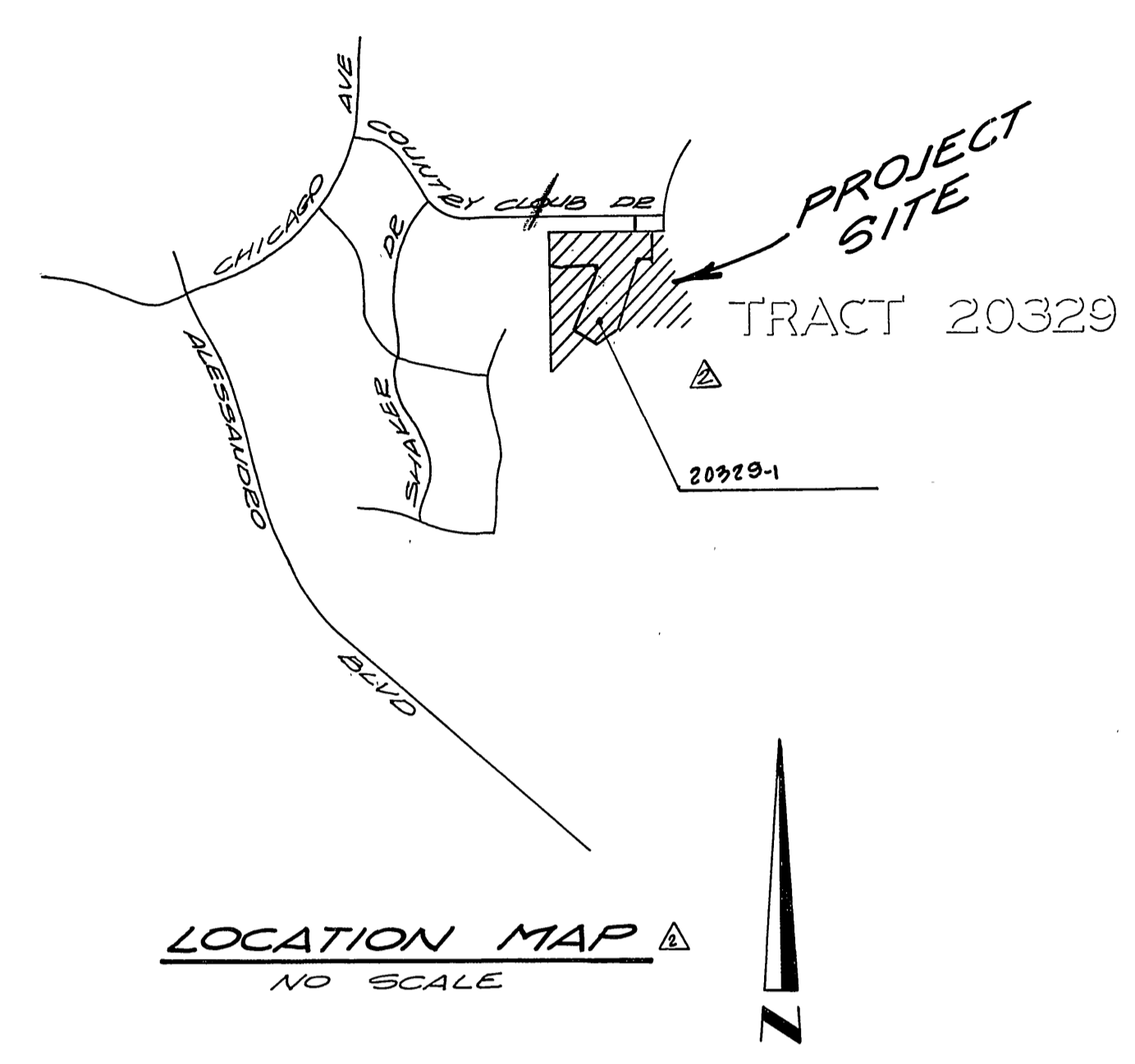
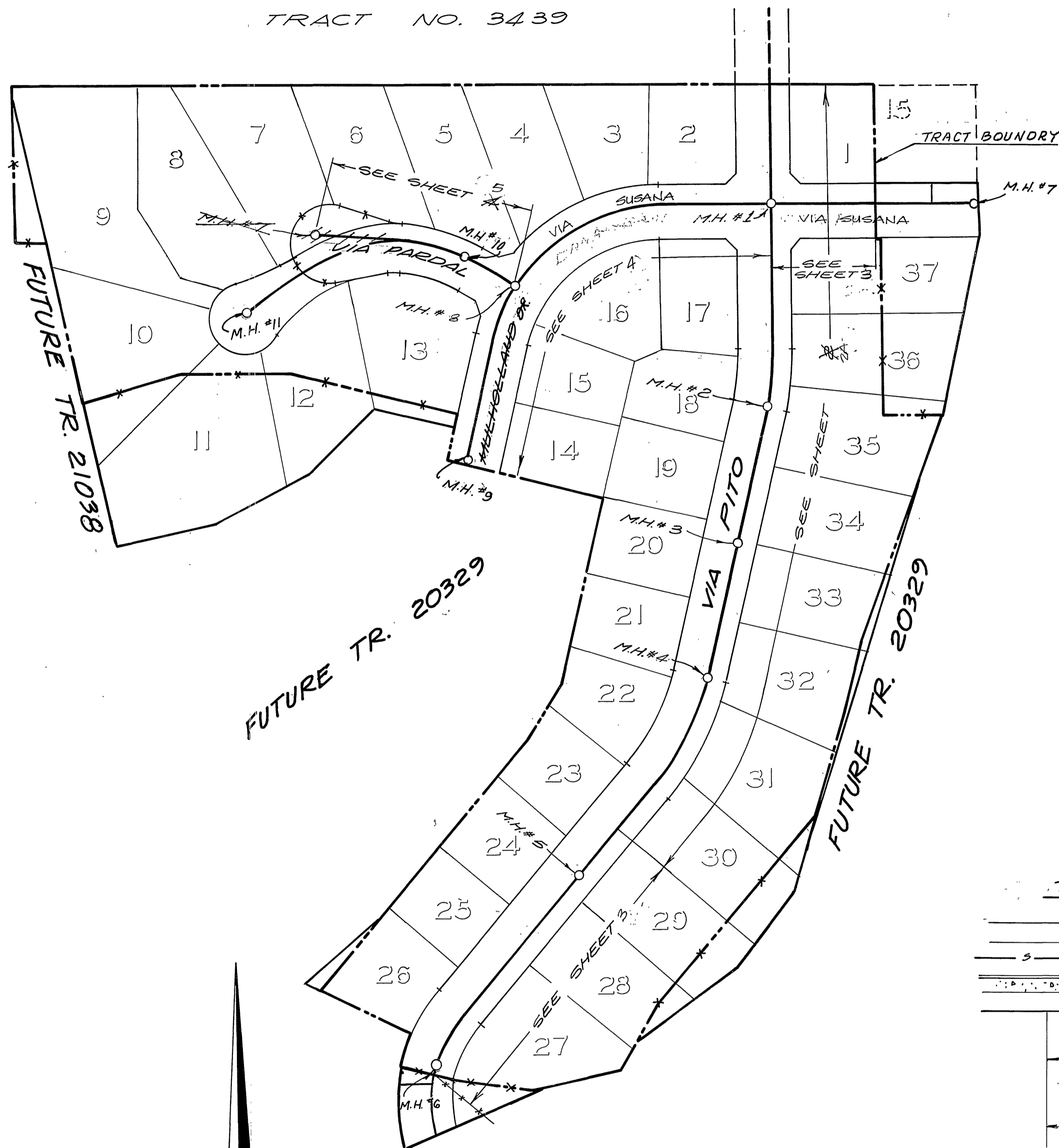


GENERAL NOTES

- The private engineer signing these plans is responsible for the accuracy and acceptability of the work hereon. In the event of discrepancies arising during construction the private engineer signing the plans shall be responsible for determining an acceptable solution and revising the plans for approval by the city.
- It shall be the responsibility of the contractor to clear the right-of-way in accordance with the provisions of law as it affects each utility including irrigation lines and appurtenances and at no cost to the city.
- Construction shall be in accordance with the City of Riverside department of public works, standard drawings, standard drawing No. 10 and the standard specifications for public works construction, current edition.
- Location of laterals to be determined in the field at the direction of the owner. Avoid conflict with proposed and/or existing facilities.
- Contractor is to verify existing sewer elevation prior to construction.
- The sewer contractor shall adjust manholes to final grade after paving is completed.
- No finished floor elevation shall be less than 4' above the sewer flow line at the point of connection without having a proper backwater valve installed in the lateral.
- A plug wall shall be installed and will remain in place where the new sewer connects with the existing sewer until the new sewer is accepted by the City of Riverside.
- All manholes to be Riverside City Std. No. 500.
- All flagged elevations shall be staked in the field by private engineer.
- The contractor shall call in a location request to UNDERGROUND SERVICE ALERT (USA), Phone No. 1-800-422-4133, two working days before digging. No construction permit will be issued by the Public Works Department involving excavation for underground facilities unless the applicant has been provided an Inquiry Identification Number by U.S.A.
- The developer shall be responsible for preserving or re-establishing and referencing survey monuments destroyed, disturbed or buried as a result of construction shown hereon.

TRACT NO. 3439



LEGEND

- S — SEWER PIPING
- — INDICATES MANHOLE
- — LATERAL LOCATION

INDEX MAP
SCALE 1"=100'

GENERAL NOTES: (SEE ABOVE)

- IT SHALL BE THE RESPONSIBILITY OF THE CONTRACTOR TO CLEAR THE RIGHT OF WAY IN ACCORDANCE WITH THE PROVISIONS OF LAW AS IT AFFECTS EACH UTILITY INCLUDING IRRIGATION LINES AND APPURTENANCES AND AT NO COST TO THE CITY.
- CONSTRUCTION SHALL BE IN ACCORDANCE WITH THE CITY OF RIVERSIDE, DEPARTMENT OF PUBLIC WORKS, STANDARD DRAWINGS AND THE STANDARD SPECIFICATIONS FOR PUBLIC WORKS CONSTRUCTION, 1978 EDITION.
- LOCATION OF LATERALS TO BE DETERMINED IN THE FIELD AT THE DIRECTION OF THE OWNER. AVOID CONFLICT WITH PROPOSED AND/OR EXISTING FACILITIES.
- CONTRACTOR IS TO VERIFY EXISTING SEWER ELEVATION PRIOR TO CONSTRUCTION.
- THE SEWER CONTRACTOR SHALL ADJUST MANHOLES TO FINAL GRADE AFTER PAVING IS COMPLETED.
- A PLUG SHALL BE INSTALLED AND WILL REMAIN IN PLACE WHERE THE NEW SEWER CONNECTS WITH THE EXISTING SEWER UNTIL THE NEW SEWER IS ACCEPTED BY THE CITY.
- THE PRIVATE ENGINEER SIGNING THESE PLANS IS RESPONSIBLE FOR ASSURING THE ACCURACY AND ACCEPTABILITY OF THE WORK HEREON. IN THE EVENT OF DISCREPANCIES ARISING DURING CONSTRUCTION AS A RESULT OF ERRORS OR OMISSIONS, THE PRIVATE ENGINEER SHALL BE RESPONSIBLE FOR DETERMINING AN ACCEPTABLE SOLUTION AND REVISING THE PLANS FOR APPROVAL BY THE CITY.

BENCH MARK:
PK. NAIL & TAG IN BASE OF LIGHT STANDARD IN MEDIUM STRIP OF COUNTRY CLUB DRIVE, WEST OF 6 CANYON CREST DRIVE, C.R.F.B. 847/20 6-2-77 W. ELEV. 1068.06

Underground Service Alert
Call: TOLL FREE
1 - 800
422 - 4133
TWO WORKING DAYS BEFORE YOU DIG

PRIVATE ENGINEERING NOTE
(NOT REQUIRED BY GOVERNING AGENCY)
CONSTRUCTION CONTRACTOR AGREES THAT IN ACCORDANCE WITH GENERALLY ACCEPTED CONSTRUCTION PRACTICES, CONSTRUCTION CONTRACTOR WILL BE REQUIRED TO ASSUME SOLE AND COMPLETE RESPONSIBILITY FOR JOB SITE CONDITIONS DURING THE COURSE OF CONSTRUCTION OF THE PROJECT, INCLUDING SAFETY OF ALL PERSONS AND PROPERTY. THAT THIS REQUIREMENT SHALL BE MADE TO APPLY CONTINUOUSLY AND NOT BE LIMITED TO NORMAL WORKING HOURS, AND CONSTRUCTION CONTRACTOR FURTHER AGREES TO DEFEND, INDEMNIFY AND HOLD DESIGN PROFESSIONAL HARMLESS FROM ANY AND ALL LIABILITY, REAL OR ALLEGED, IN CONNECTION WITH THE PERFORMANCE OF WORK ON THIS PROJECT, EXCEPTING LIABILITY ARISING FROM THE SOLE NEGLIGENCE OF DESIGN PROFESSIONAL.

REVISIONS BY
J. F. DAVIDSON ASSOCIATES, INC.
CIVIL ENGINEERS - SURVEYORS - PLANNERS
3426 TENTH STREET RIVERSIDE, CALIFORNIA 714-686-0844

APPROVED BY: *John W. Canty*
DATE: 8/16/77

ZENITH SURVEYS, INC.
SANTA ANA, CALIFORNIA

APPROVED BY: *Lawrence O. Mc Dermott*
DATE: 5/25/77 R.C.E. 23107

INDEX MAP / LOCATION MAP	REVISED TITLE BLOCK / GENERAL NOTES
GENERAL REVISION'S SHOWING REV.	LOT LINES LOT NO. LOT DIM., AND SEWER LATERALS

CITY OF RIVERSIDE - WATER SYSTEM
APPROVED: *Carl W. ...* 9/25/77
BY: *Domest ...* 11-1-77
CHIEF WATER UTILITIES ENGINEER

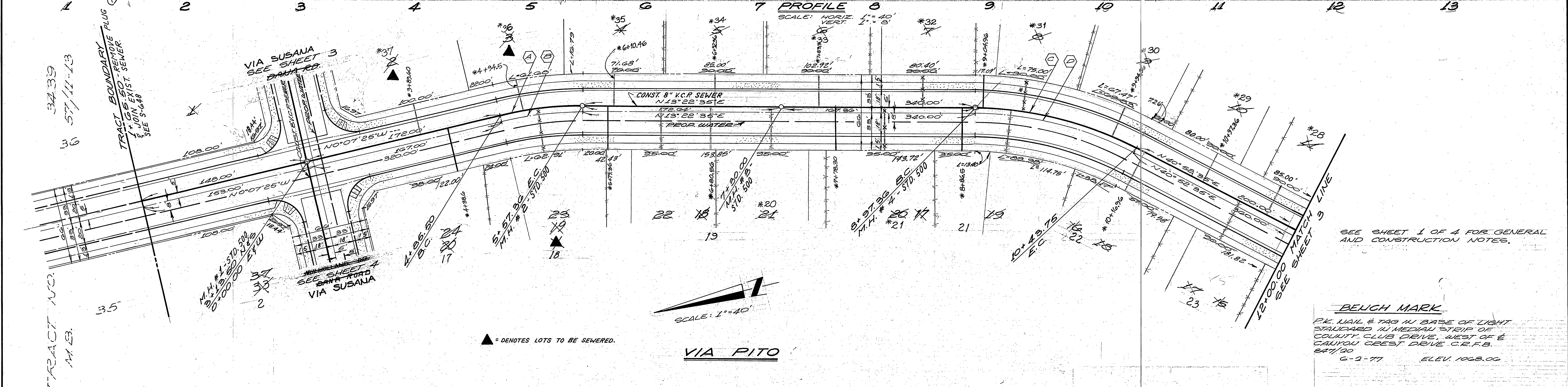
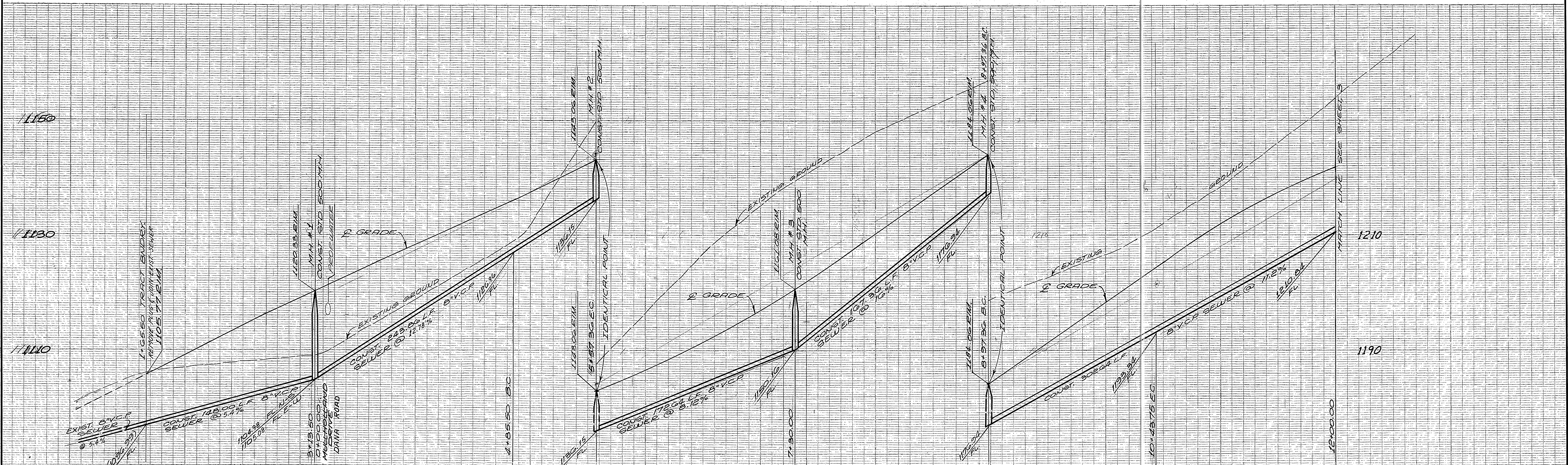
CITY OF RIVERSIDE, CALIFORNIA
DEPARTMENT OF PUBLIC WORKS

APPROVED BY: *...* DATE: 9/12/78
OFFICE ENGINEER
PARK DEPARTMENT
TRAFFIC DIVISION
ASSISTANT CITY ENGINEER

SEWER PLAN AND PROFILE

INDEX
TRACT NO. 8932-1

PROJECT NO. S-1147
SHEET 1 OF 4
FILE NO. JFD: 85-8954



SEE SHEET 1 OF 4 FOR GENERAL AND CONSTRUCTION NOTES.

BEUCH MARK
 P.K. NAIL & TAG IN BASE OF LIGHT STAKE SET IN MIDDLE STRIP OF COUNTY CLUB DRIVE, WEST OF CANYON CREST DRIVE C.R.F.B. 8/1/70
 G-2-77 ELEV. 1068.00

CURVE DATA			
NO	D	R	T
A	13°30'00"	305.00'	71.86', 36.10'
B	13°30'00"	300.00'	70.69', 35.71'
C	27°30'00"	305.00'	146.35', 74.63'
D	27°30'00"	300.00'	143.99', 73.41'

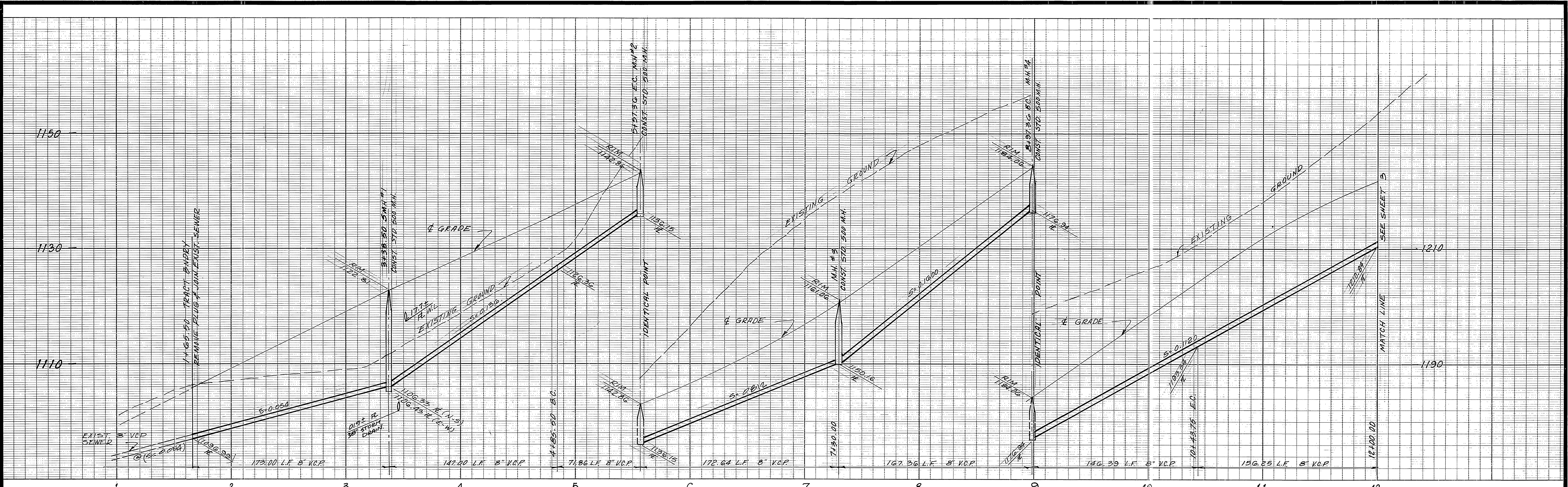
ZENITH SURVEYS, INC.
 SANTA ANA, CALIFORNIA
 LAWRENCE O. MC DERMOTT
 DATE: 5/2/77 R.C.E. 23107

DESIGNED BY:	DRAWN BY:	CHECKED BY:

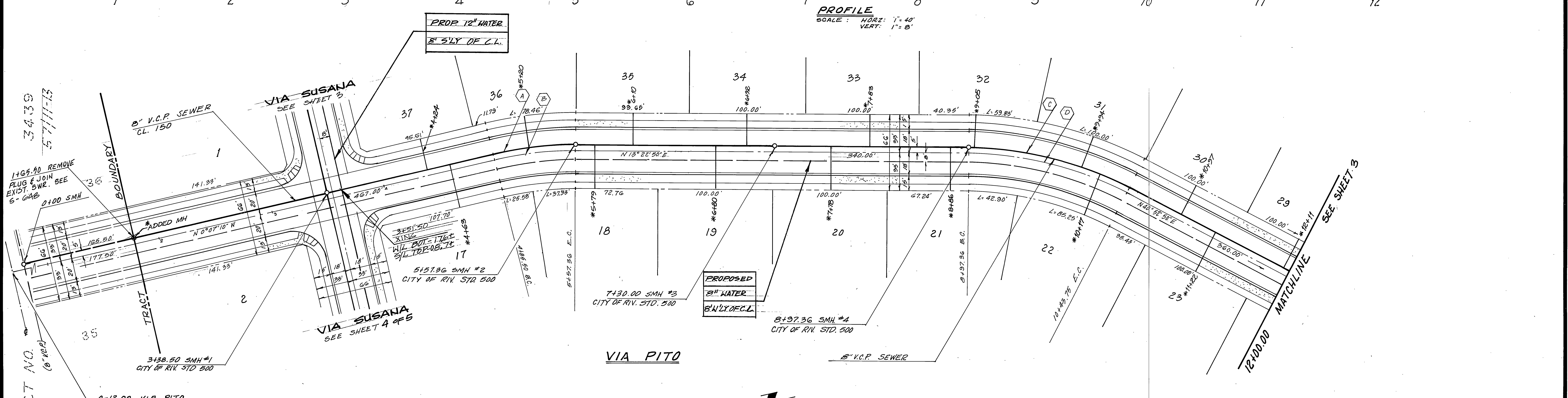
CITY OF RIVERSIDE
 DEPARTMENT OF PUBLIC WORKS
 APPROVED BY: [Signature] DATE: 11-4-77
 CHIEF WATER UTILITIES ENGINEER

SEE SHEET 2A
 THIS SHEET VOID

CITY OF RIVERSIDE, CALIFORNIA
 DEPARTMENT OF PUBLIC WORKS
 SEWER PLAN AND PROFILE
VIA PITO
 TRACT NO. 20329-1
 SHEET 2 OF 4
 PROJECT NO. S-1147
 HORIZ. SCALE: 1" = 40' VERT. SCALE: 1" = 8'



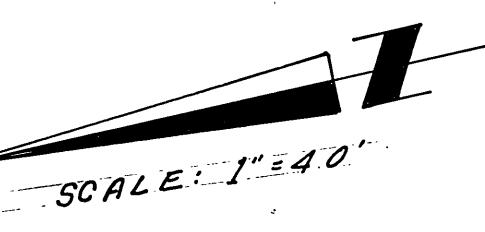
PROFILE
SCALE: HORIZ: 1" = 40'
VERT: 1" = 8'



TRACT NO. 20329
M.B. 68-002

CURVE DATA

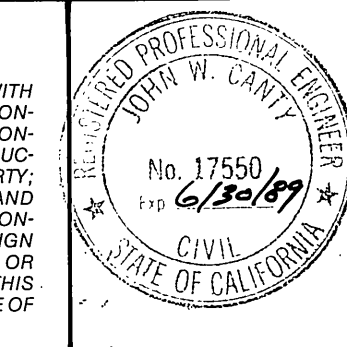
No.	Δ	R	L	T
(A)	13°30'00"	305.00'	71.86'	36.10'
(B)	13°30'00"	300.00'	70.63'	35.71'
(C)	27°30'00"	305.00'	146.33'	74.63'
(D)	27°30'00"	300.00'	142.99'	73.41'



SEE SHEET 1 OF 4 FOR GENERAL AND CONSTRUCTION NOTES.

Underground Service Alert
Call: TOLL FREE
1-800-422-4133
TWO WORKING DAYS BEFORE YOU DIG

PRIVATE ENGINEERING NOTE
CONSTRUCTION CONTRACTOR AGREES THAT IN ACCORDANCE WITH GENERALLY ACCEPTED CONSTRUCTION PRACTICES, CONSTRUCTION CONTRACTOR WILL BE REQUIRED TO ASSUME SOLE AND COMPLETE RESPONSIBILITY FOR JOB SITE CONDITIONS DURING THE COURSE OF CONSTRUCTION OF THE PROJECT, INCLUDING SAFETY OF ALL PERSONS AND PROPERTY. THAT THIS REQUIREMENT SHALL BE MADE TO APPLY CONTINUOUSLY AND NOT BE LIMITED TO NORMAL WORKING HOURS, AND CONSTRUCTION CONTRACTOR FURTHER AGREES TO DEFEND, INDEMNIFY AND HOLD DESIGN PROFESSIONAL HARMLESS FROM ANY AND ALL LIABILITY, REAL OR ALLEGED, IN CONNECTION WITH THE PERFORMANCE OF WORK ON THIS PROJECT, EXCEPTING LIABILITY ARISING FROM THE SOLE NEGLIGENCE OF DESIGN PROFESSIONAL.



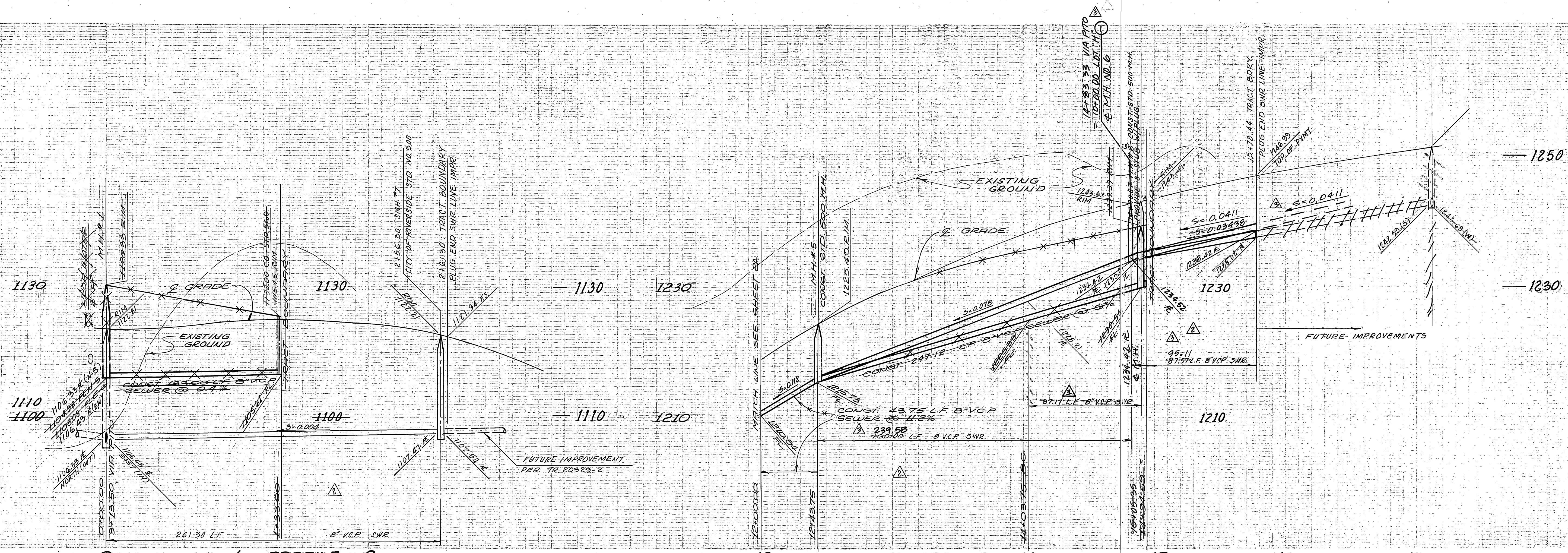
PREPARED UNDER THE DIRECTION OF:
John W. County
REGISTERED CIVIL ENGINEER NO. 41550
EXPIRATION DATE: 6-30-89 DATE: 8/11/87
APPROVED BY:

J.F. DAVIDSON ASSOCIATES, INC.
CIVIL ENGINEERS • SURVEYORS • PLANNERS
P.O. BOX 493 11200 SO. MT. VERNON AVE. #D 73-080 EL PASO, #103
RIVERSIDE, CA 92502 COLTON, CA 92504 PALM DESERT, CA 92260
(714) 686-0944 (714) 825-1092 (619) 346-5891

J.F.D. ASSOCIATES
SCALE: 1" = 40'
DATE: MAY 87
BENCH MARK: P.K. NAIL & TAG IN BASE OF LIGHT STANDARD IN MEDIUM STRIP OF COUNTY CLUB DRIVE, WEST OF CANYON CREST DRIVE C.R.F.B. 847120 6-27 ELEV 1068.00

CITY OF RIVERSIDE
11.113 WATER SYSTEM
Carl W. Davidson
APPROVED 10/26/87
CITY OF RIVERSIDE, CALIFORNIA
DEPARTMENT OF PUBLIC WORKS
APPROVED BY: *Raymond Paul*
DIRECTOR OF PUBLIC WORKS
DATE: 1/19/88

SEWER PLAN AND PROFILE
VIA PITO
TRACT NO. 20329-1
SHEET 2A OF 5
PROJECT NO. 5-1147
FILE NO.



1 PROFILE 2
SCALE: HORIZ. 1"=40'
VERT. 1"=8'

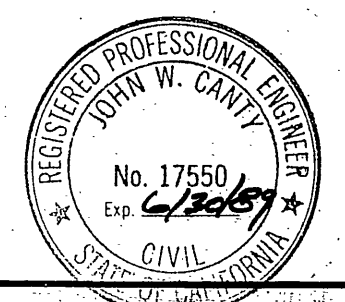
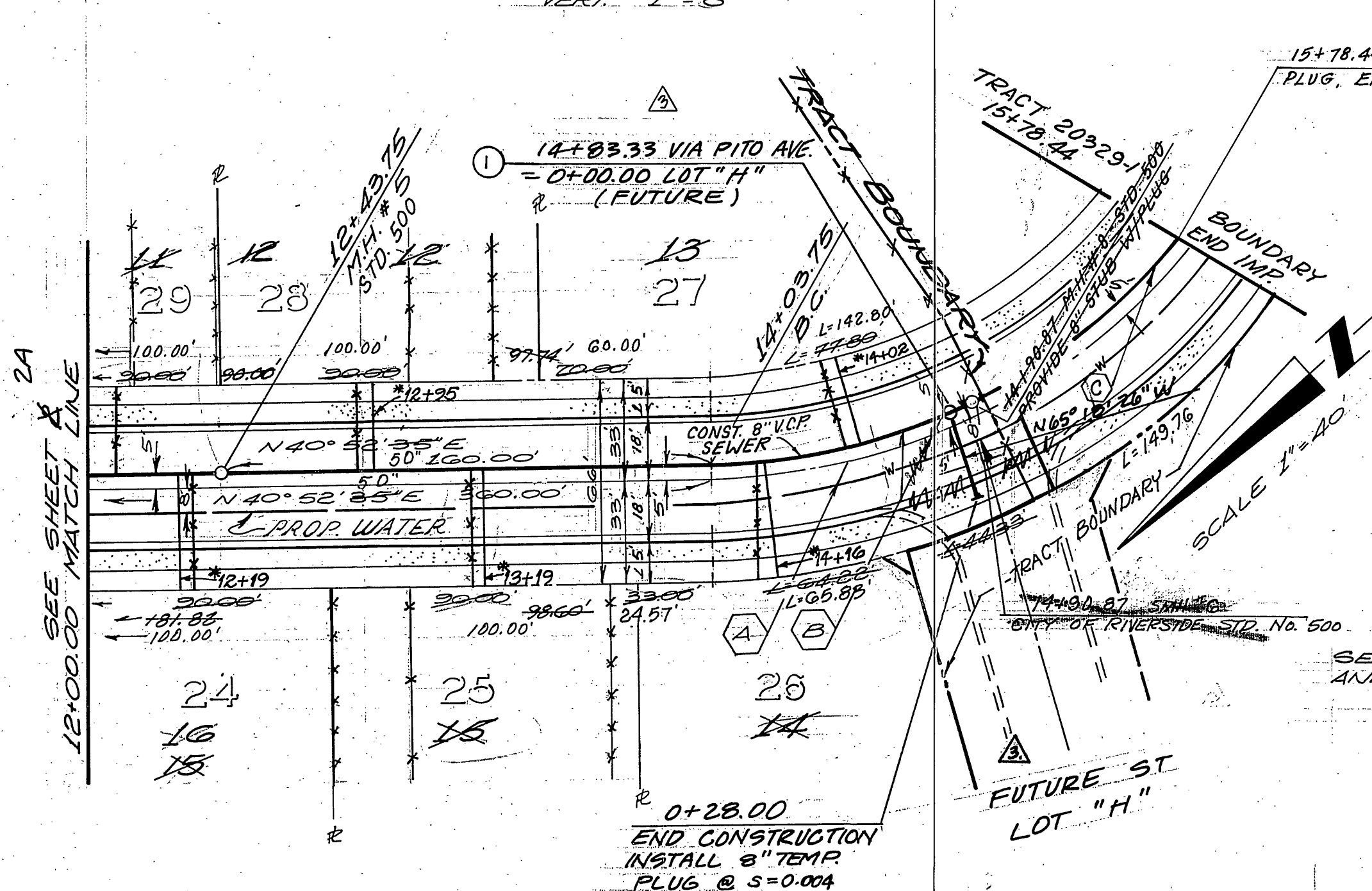
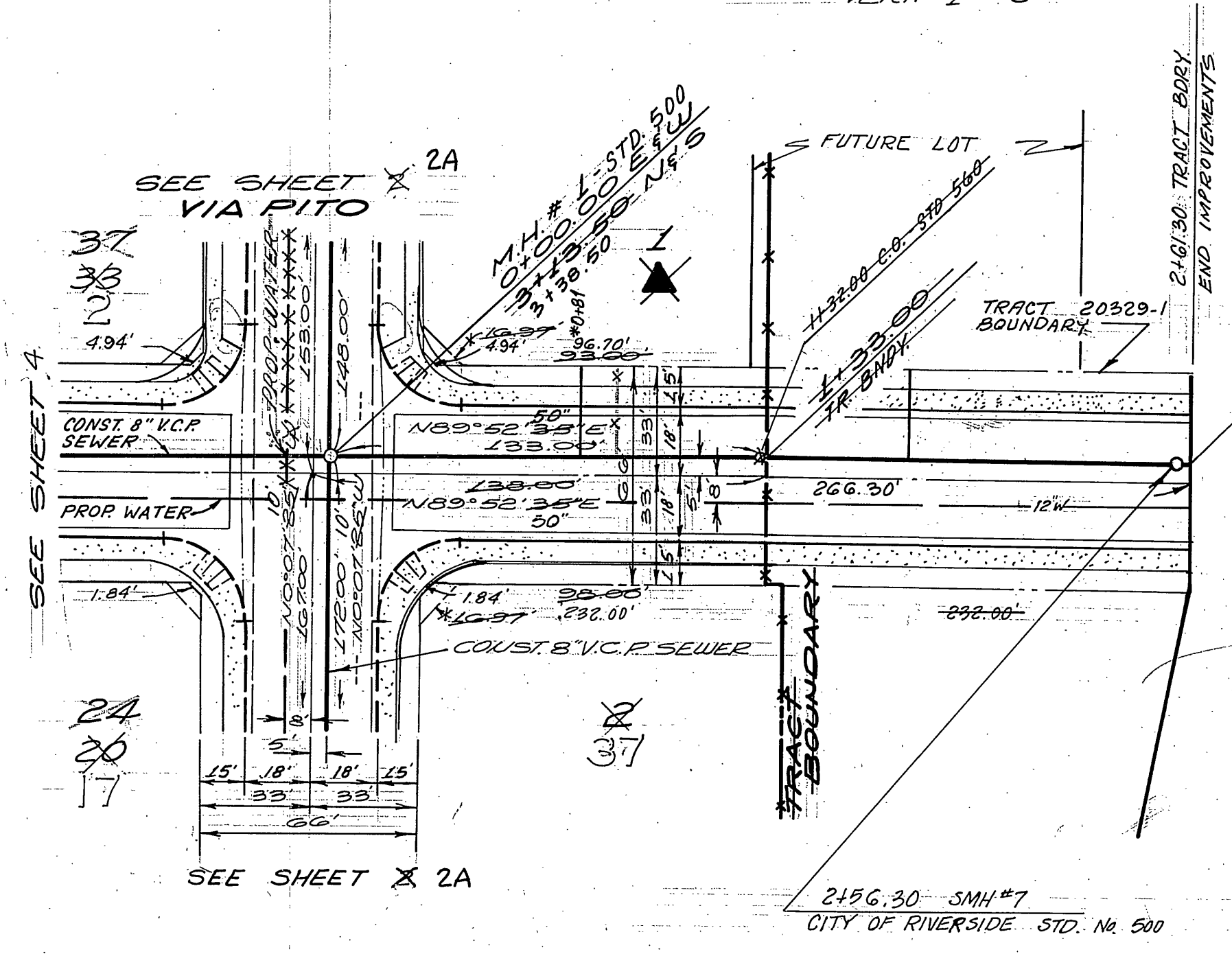
13 PROFILE 14
SCALE: HORIZ. 1"=40'
VERT. 1"=8'

CURVE DATA				
NO	Δ	R	L	T
A	51°20'33"	200.00'	179.22'	96.19'
B	23°22'51"	195.00'	79.58'	44.33'
C	25°36'46"	195.00'	87.17'	44.33'

CONSTRUCTION NOTES
 ① CONSTRUCT PRECAST CONCRETE SEWER MANHOLE PER CITY OF RIVERSIDE STD. DWG 500

SEE SHEET 1 OF 4 FOR GENERAL AND CONSTRUCTION NOTES.

BENCH MARK
 PER LOCAL & TAG IN BASE OF LIGHT STANDAARD IN MEDIAN STRIP OF COUNTY CLUB DRIVE, WEST OF CALIFORNIA GREST DRIVE. C.R.F.B. 8571.00
 6-2-77 ELEV. 1063.06



J. F. DAVIDSON ASSOCIATES, INC.
 CIVIL ENGINEERS - SURVEYORS - PLANNERS
 3426 TENTH STREET RIVERSIDE, CALIFORNIA 92504 714-886-0844

APPROVED BY: *[Signature]*
 DATE: 8/11/87

ZENITH SURVEYS, INC.
 SANTA ANA, CALIFORNIA

APPROVED BY: *[Signature]*
 DATE: 9/27/77 R.C.E. 23107

REVISIONS

NO.	DESCRIPTION	DATE
1	REVISED SWR FOR TR. 25406 FUTURE ST. 11-17-77	11-17-77
2	ADDED APPROVAL BLOCK FOR WATER & REVISE VIA PITO 11-17-77	11-17-77
3	GENERAL REVISIONS SHOWING REV LOT LINES, LOT NO., LOT DIM., SEWER LATERALS.	11-17-77

CITY OF RIVERSIDE - WATER SYSTEM
 Carl W. [Signature] 10/26/87
 APPROVED

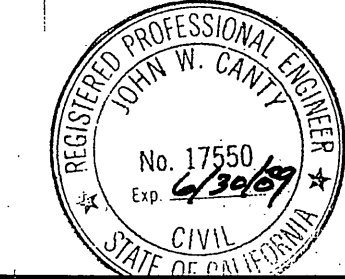
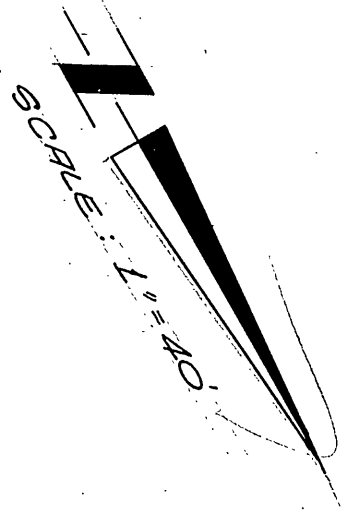
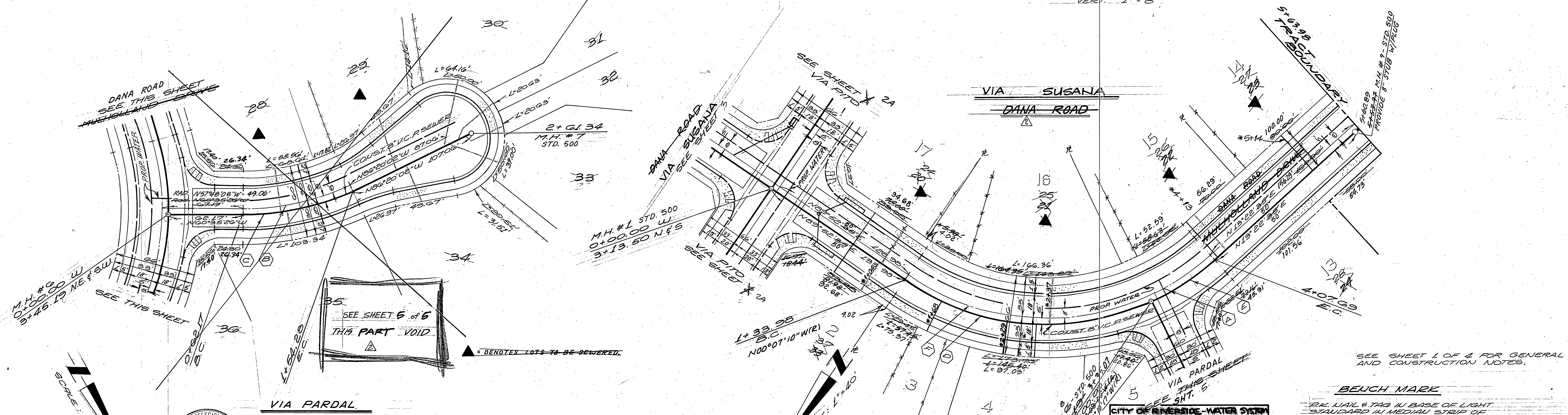
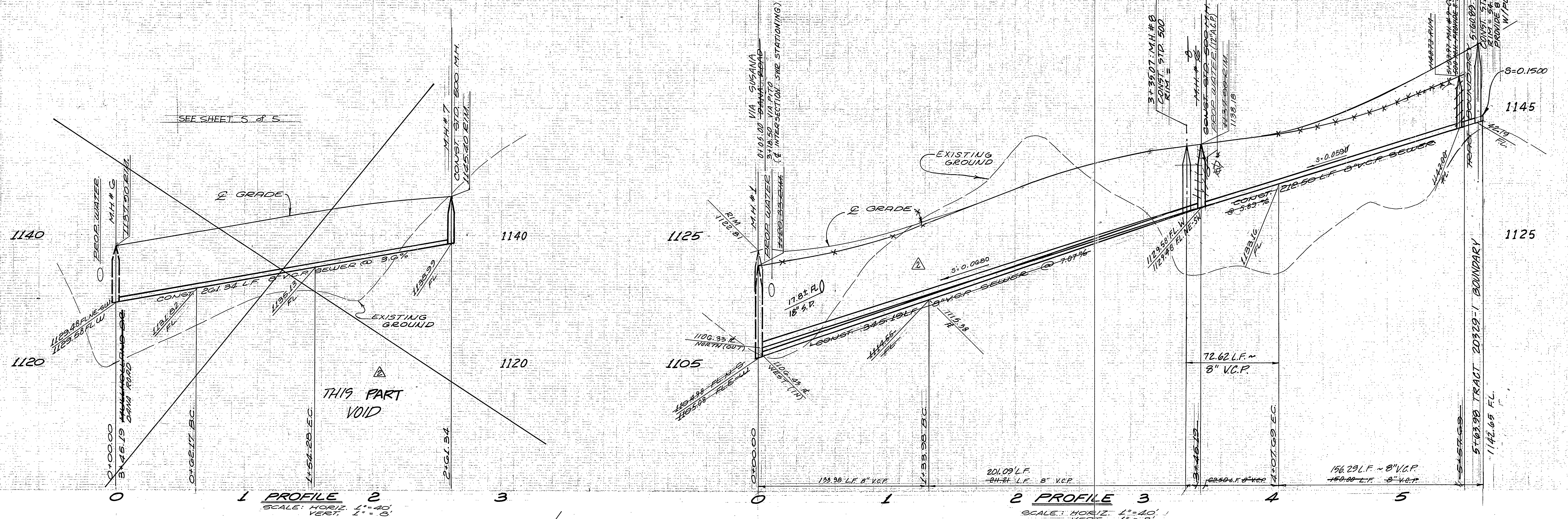
CITY OF RIVERSIDE
 DOMESTIC SYSTEM
 APPROVED BY: *[Signature]* 11-1-77
 CHIEF WATER UTILITIES ENGINEER DATE

CITY OF RIVERSIDE, CALIFORNIA
 DEPARTMENT OF PUBLIC WORKS

APPROVED BY: *[Signature]* 9/12/78
 DATE

SEWER PLAN AND PROFILE
 VIA PITO & DANA ROAD
 VIA SUSANA TRACT NO. 8932-1

PROJECT NO. S-1147
 SHEET 3 OF 5
 FILE NO. JFD:85-8754 IN 127



REVISED BY:
J. F. DAVIDSON ASSOCIATES, INC.
 CIVIL ENGINEERS - SURVEYORS - PLANNERS
 3426 TENTH STREET RIVERSIDE, CALIFORNIA 714-686-0844

APPROVED BY: *John W. Carty*
 DATE: 8/11/87
 REGISTERED CIVIL NO. 17550

CURVE DATA				
No.	Δ	R	L	T
A	18°54'01"	200.00'	65.38'	33.29'
B	25°44'36"	200.00'	89.86'	45.70'
C	25°44'36"	205.00'	92.11'	46.85'
D	56°12'07"	205.00'	201.08'	109.44'
E	20°17'53"	205.00'	72.62'	36.70'
F	60°28'01"	200.00'	211.07'	116.52'
	57°35'38"		201.06'	109.94'

ZENITH SURVEYS, INC.
 SANTA ANA, CALIFORNIA
 LAWRENCE O. MC DERMOTT
 DATE: 5/25/77 R.C.E. 23107

CITY OF RIVERSIDE - WATER SYSTEM
 APPROVED BY: *Carl W. Winters* 10/10/87
 DATE: 11-1-77
 CHIEF WATER UTILITIES ENGINEER

CITY OF RIVERSIDE, CALIFORNIA
 DEPARTMENT OF PUBLIC WORKS
 APPROVED BY: *John C. Wills*
 DATE: 9/12/78
 DIRECTOR OF PUBLIC WORKS

SEWER PLAN AND PROFILE
 VIA SUSANA VIA PARDAL
 DANA ROAD + MULHOLLAND DR.
 TRACT NO. 3932-1
 20329-1

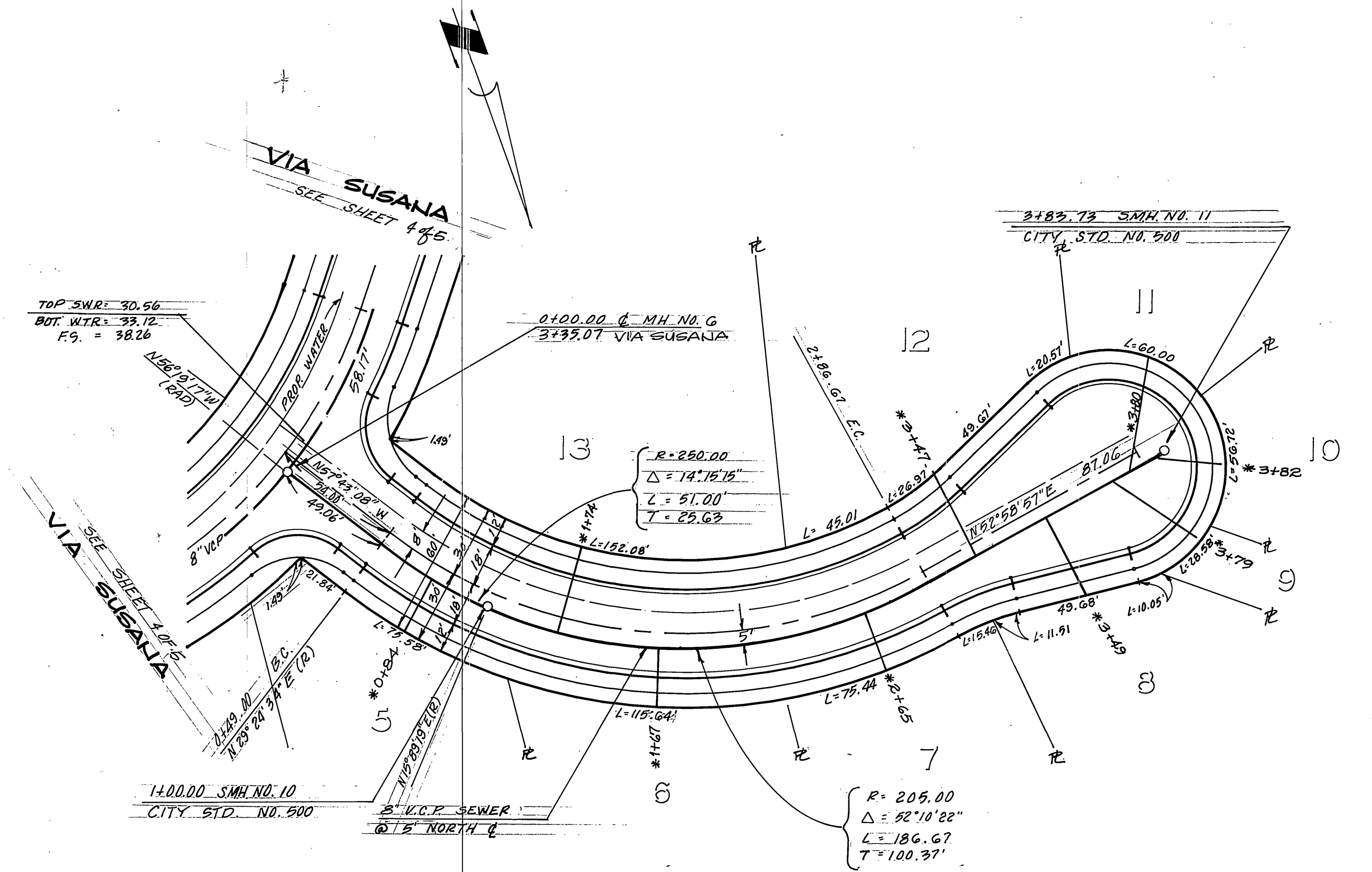
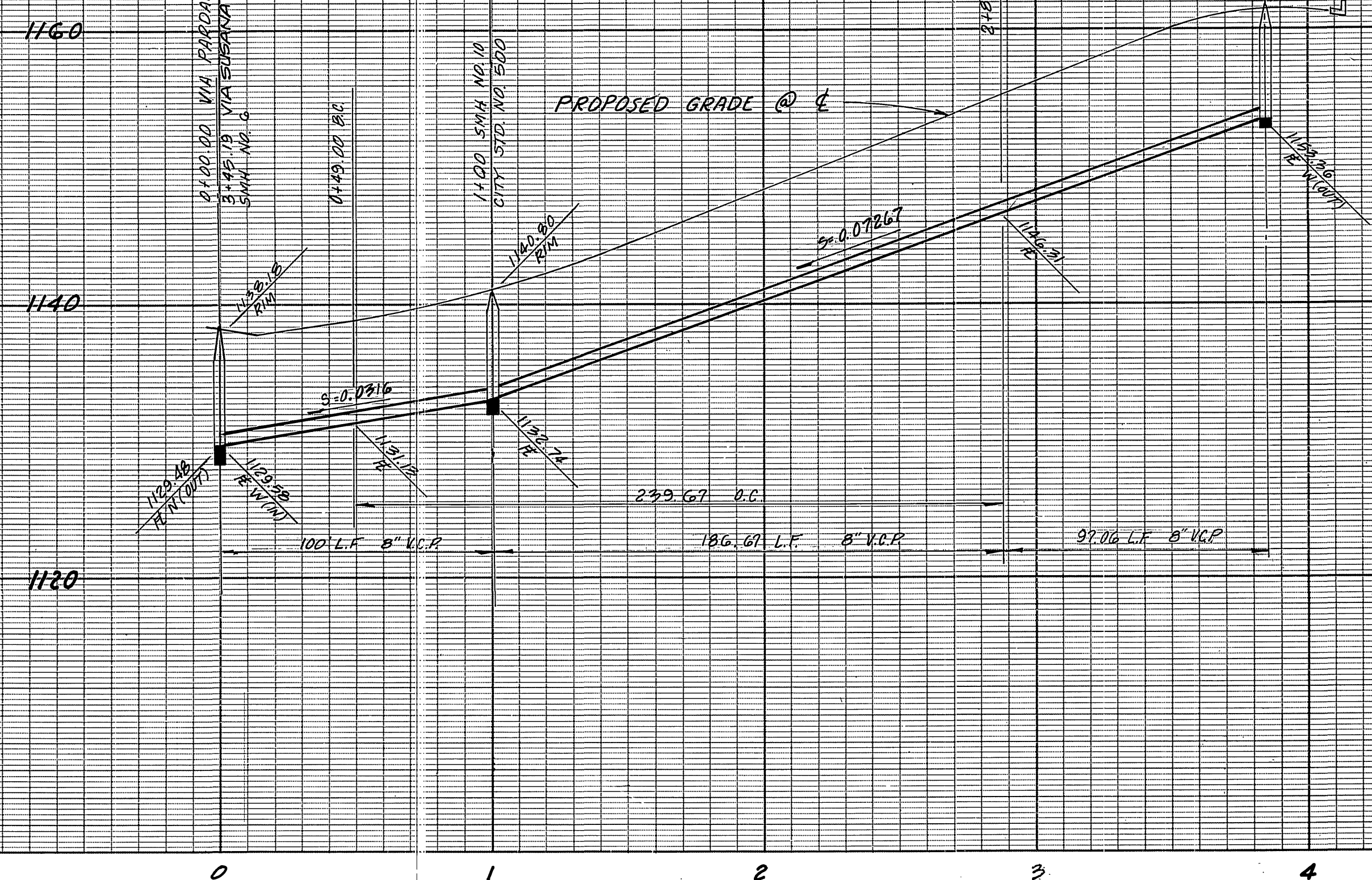
HORIZ. SCALE: 1" = 40'
 VERT. SCALE: 1" = 8'

PROJECT NO. S-1127
 SHEET 4 OF 4

SEE SHEET 1 OF 4 FOR GENERAL AND CONSTRUCTION NOTES.

BEUCH MARK
 1/4" NAIL & TAG IN BASE OF LIGHT STANDARD IN MEDIUM STEP OF COUNTY CLUB DRIVE, WEST OF E CAUFU CREST DRIVE, C.R.F.B. 847/20 6-2-77 ELEV. 1068.06

PROFILE SCALE
 HORZ. 1" = 40'
 VERT. 1" = 8'



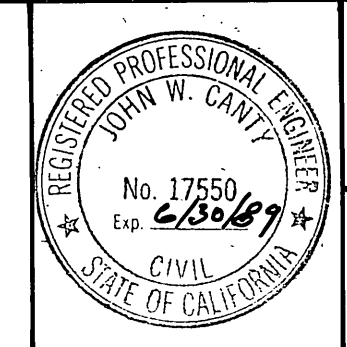
CITY OF RIVERSIDE
 DOMESTIC WATER SYSTEM
 Carl W. Caty 10/26/87
 APPROVED DATE

CITY OF RIVERSIDE, CALIFORNIA
 DEPARTMENT OF PUBLIC WORKS
 APPROVED BY: Barry Bell
 DIRECTOR OF PUBLIC WORKS
 DATE: 1/19/88

SEWER PLAN AND PROFILE
 VIA PARDAL
 TRACT NO. 20329-1
 PROJECT NO. 5-1147
 SHEET 5 OF 5
 FILE NO. J.F.D. 85-8954

Underground Service Alert
 Call: TOLL FREE
 1-800-422-4133
 TWO WORKING DAYS BEFORE YOU DIG

PRIVATE ENGINEERING NOTE
 CONSTRUCTION CONTRACTOR AGREES THAT IN ACCORDANCE WITH GENERALLY ACCEPTED CONSTRUCTION PRACTICES, CONSTRUCTION CONTRACTOR WILL BE REQUIRED TO ASSUME SOLE AND COMPLETE RESPONSIBILITY FOR JOB SITE CONDITIONS DURING THE COURSE OF CONSTRUCTION OF THE PROJECT, INCLUDING SAFETY OF ALL PERSONS AND PROPERTY. THAT THIS REQUIREMENT SHALL BE MADE TO APPLY CONTINUOUSLY AND NOT BE LIMITED TO NORMAL WORKING HOURS, AND CONSTRUCTION CONTRACTOR FURTHER AGREES TO DEFEND, INDEMNIFY AND HOLD DESIGN PROFESSIONAL HARMLESS FROM ANY AND ALL LIABILITY, REAL OR ALLEGED, IN CONNECTION WITH THE PERFORMANCE OF WORK ON THIS PROJECT, EXCEPTING LIABILITY ARISING FROM THE SOLE NEGLIGENCE OF DESIGN PROFESSIONAL.



PREPARED UNDER THE DIRECTION OF:
 John W. Caty
 REGISTERED CIVIL ENGINEER NO. 177195
 EXPIRATION DATE 6/30/89 DATE: 2/11/87
 APPROVED BY:

J.F. DAVIDSON ASSOCIATES, INC.
 CIVIL ENGINEERS • SURVEYORS • PLANNERS
 P.O. BOX 493 11200 SO. MT. VERNON AVE. #D 73-080 EL PASO, #103
 RIVERSIDE, CA 92502 COLTON, CA 92324 PALM DESERT, CA 92260
 (714) 686-0844 (714) 825-1082 (619) 346-5691
 1" = 40' BENCH MARK: PK. NAIL & TAG IN BASE OF LIGHT STANDARD IN MEDIAN STRIP OF COUNTRY CLUB DRIVE, WEST OF & CANYON CREST DRIVE C.R.F.B. 847120 ELEV. 1068.06
 DATE: MARCH 1987

J.F.D. ASSOCIATES
 MARK REVISIONS APPR. DATE
 DESIGNED BY: J.F.D. DRAWN BY: B.W. CHECKED BY: J.F.D.

APPROVED BY: [Signature]
 BY: JFC
 DATE: 1/19/88
 CHIEF P.W. ENGR.

HORIZ. SCALE: 1" = 40' VERT. SCALE: 1" = 8'