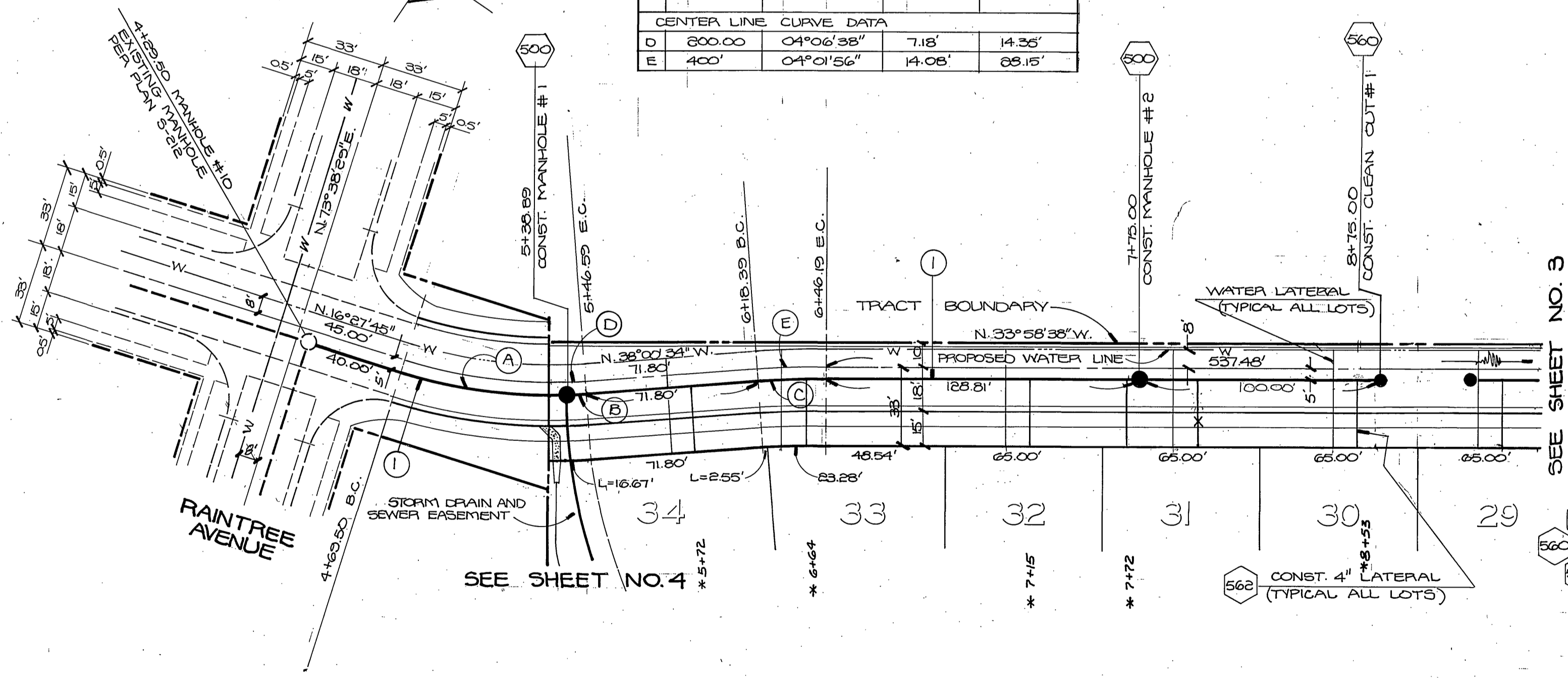


SEWER LINE CURVE DATA				
	RADIUS	DELTA	TANGENT	LENGTH
A	205.00'	19°23'43"	36.03'	69.39'
B	205.00'	08°09'06"	3.85'	7.70'
C	365.00'	04°01'56"	13.90'	27.60'

CENTER LINE CURVE DATA				
	RADIUS	DELTA	TANGENT	LENGTH
D	200.00'	04°06'38"	7.18'	14.36'
E	400'	04°01'56"	14.06'	28.15'



GENERAL NOTES

1. THE PRIVATE ENGINEER SIGNING THESE PLANS IS RESPONSIBLE FOR THE ACCURACY AND ACCEPTABILITY OF THE WORK HEREON. IN THE EVENT OF DISCREPANCIES ARISING DURING CONSTRUCTION, THE PRIVATE ENGINEER SIGNING THESE PLANS SHALL BE RESPONSIBLE FOR DETERMINING AN ACCEPTABLE SOLUTION AND REVISING THE PLANS FOR APPROVAL BY THE CITY.
2. IT SHALL BE THE RESPONSIBILITY OF THE CONTRACTOR TO CLEAR THE RIGHT OF WAY IN ACCORDANCE WITH THE PROVISIONS OF LAW AS IT AFFECTS EACH UTILITY INCLUDING IRRIGATION LINES AND APPURTENANCES AND AT NO COST TO THE CITY.
3. CONSTRUCTION SHALL BE IN ACCORDANCE WITH THE CITY OF RIVERSIDE DEPARTMENT OF PUBLIC WORKS STANDARD DRAWINGS AND THE STANDARD SPECIFICATIONS FOR PUBLIC WORKS CONSTRUCTION, 1976 EDITION.
4. LOCATION OF LATERALS TO BE DETERMINED IN THE FIELD AT THE DIRECTION OF THE OWNER. AVOID CONFLICT WITH PROPOSED AND/OR EXISTING FACILITIES.
5. CONTRACTOR IS TO VERIFY EXISTING SEWER ELEVATIONS PRIOR TO CONSTRUCTION.
6. ALL STATIONING ON SEWER CENTERLINE.
7. THE CONTRACTOR SHALL BE RESPONSIBLE TO REPAIR OR REPLACE IN KIND AT HIS OWN EXPENSE ANY IMPROVEMENTS DAMAGED BY HIS OPERATION DURING CONSTRUCTION.
8. BACKFILL SHALL BE IN ACCORDANCE WITH CITY OF RIVERSIDE STD. DWG. NO. 458.
9. PIPE SHALL BE BEDDED PER CASE I, CITY OF RIVERSIDE STD. DWG. NO. 468.
10. THE SEWER CONTRACTOR SHALL ADJUST MANHOLES TO FINAL GRADE AFTER PAVING IS COMPLETED.
11. A PLUG SHALL BE INSTALLED AND WILL REMAIN IN PLACE WHERE THE NEW SEWER CONNECTS WITH THE EXISTING SEWER UNTIL THE NEW SEWER IS ACCEPTED BY THE CITY.

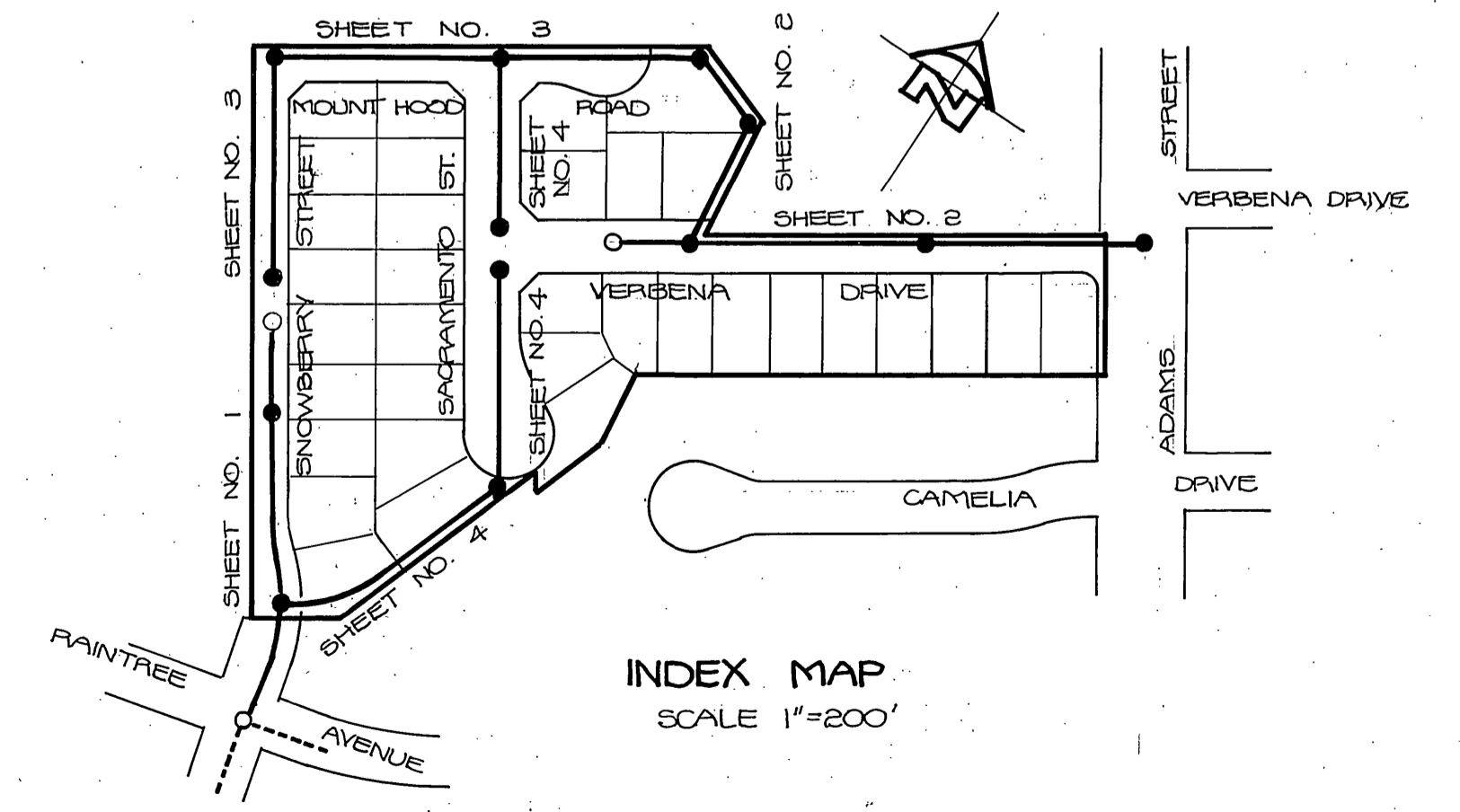
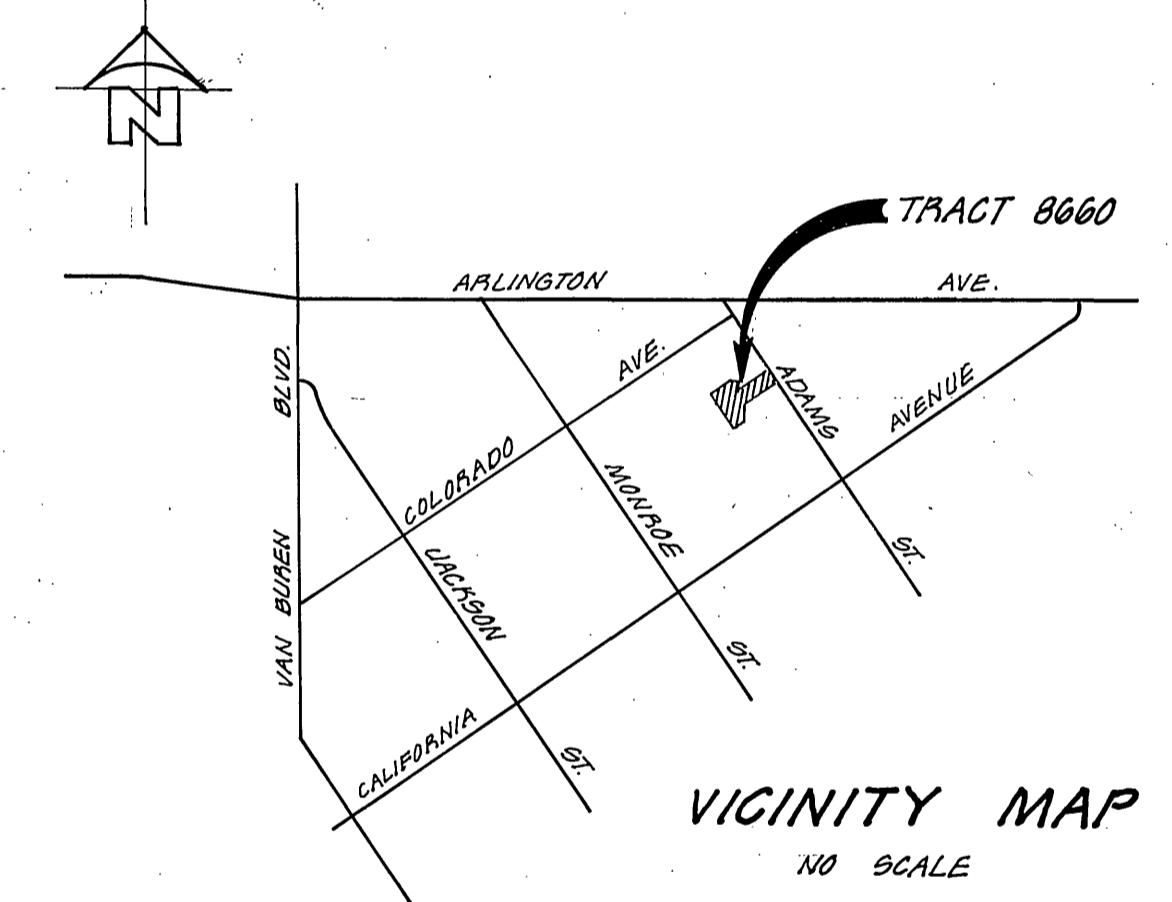
CONSTRUCTION LEGEND

- 500 - CONSTRUCT MANHOLE PER CITY OF RIVERSIDE STD. DWG. NO. 500.
- 560 - CONSTRUCT CLEAN OUT PER CITY OF RIVERSIDE STD. DWG. NO. 560.
- 562 - CONSTRUCT SEWER LATERAL PER CITY OF RIVERSIDE STD. DWG. NO. 562.
- 1 - CONSTRUCT 8" V.C.P. SEWER MAIN.

NOTICE TO CONTRACTOR

THE EXISTENCE AND LOCATION OF ANY UNDERGROUND UTILITY PIPES OR STRUCTURES SHOWN ON THIS PLAN ARE OBTAINED BY A SEARCH OF THE AVAILABLE RECORDS. TO THE BEST OF OUR KNOWLEDGE THERE ARE NO EXISTING UTILITIES EXCEPT AS SHOWN ON THESE PLANS. THE CONTRACTOR IS REQUIRED TO TAKE DUE PRECAUTIONARY MEASURES TO PROTECT THE UTILITY LINES SHOWN AND ANY OTHER LINES NOT OF RECORD OR NOT SHOWN ON THIS PLAN.

NOTE:
THESE PLANS ARE FOR SEWER CONSTRUCTION ONLY.



SNOWBERRY STREET

CITY OF RIVERSIDE
DOMESTIC SYSTEM

Mickey Hyphen
CHIEF UTILITIES ENGINEER, WATER
DATE: 8-31-77

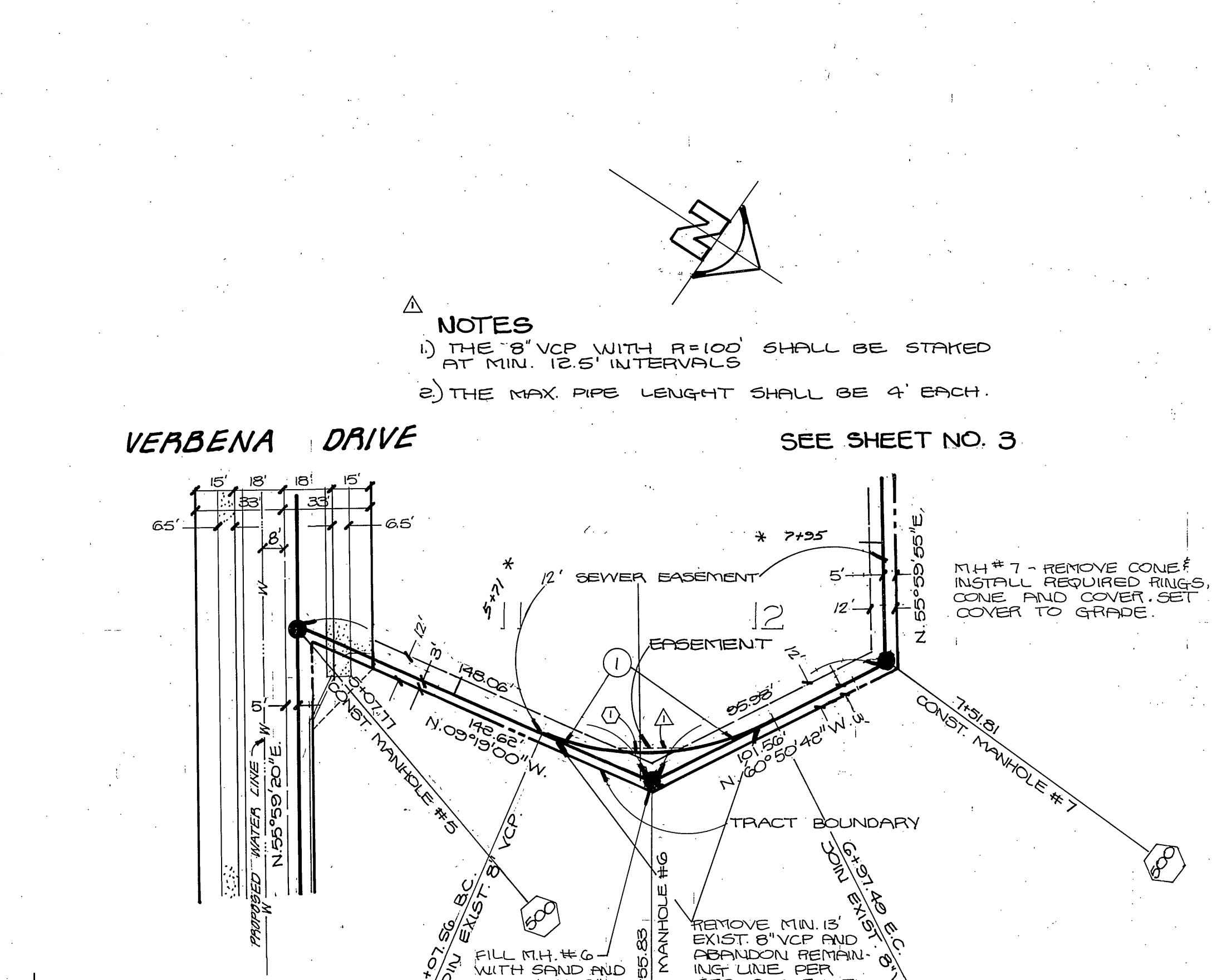
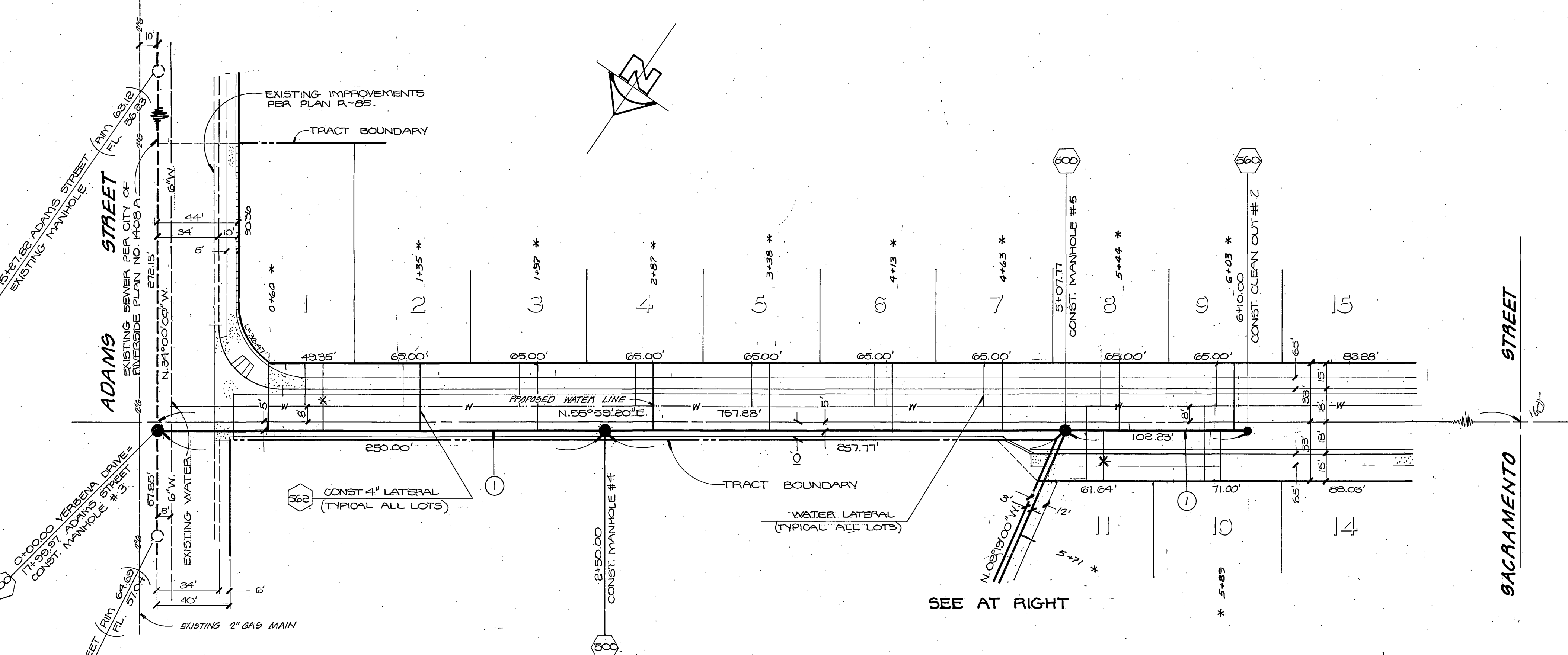
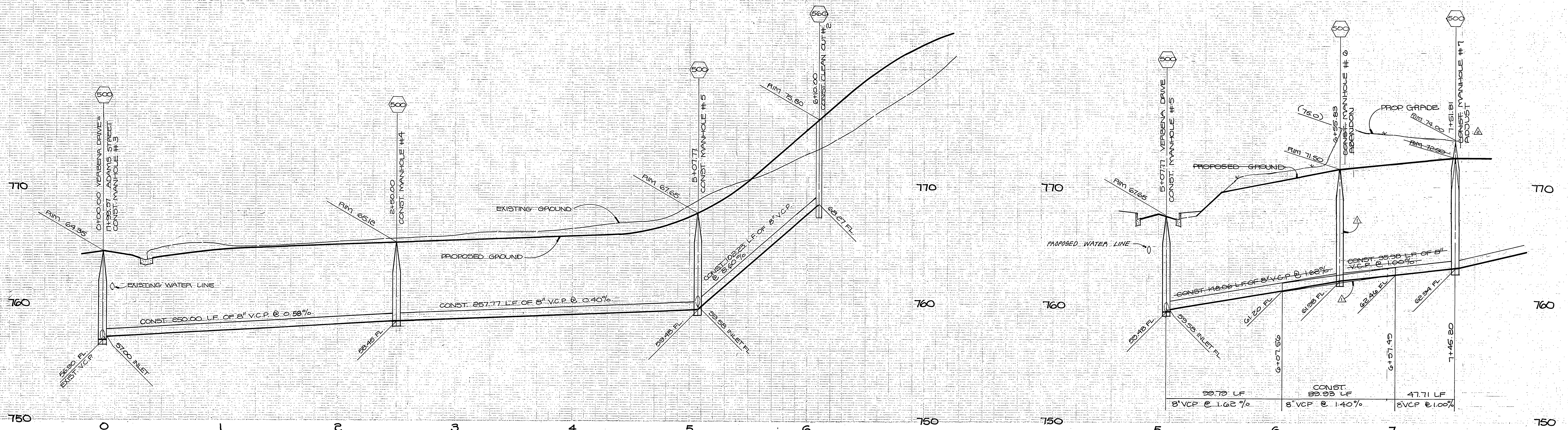
HAWKINS, ROBERTSON & ASSOCIATES
ENGINEERS & SURVEYORS
3736 ELIZABETH STREET - RIVERSIDE CA. (714) 954-9522
DATE: 4-21-77
Charles L. Robertson
R.C.E. 15016
BENCH MARK: CITY OF RIV. NO. G4-15 PK. NAIL AND TAG IN N.E.C. OF S.W. CURB RETURN OF ADAMS STREET AND ARLINGTON AVENUE. ELEV. 781.01

MARK	REVISIONS	APPR.	DATE

CITY OF RIVERSIDE, CALIFORNIA
DEPARTMENT OF PUBLIC WORKS
APPROVED BY: [Signature]
PRINCIPAL ENGINEER
DATE: 12/14/77
TRAFFIC DIVISION
CHIEF P. W. ENGR. [Signature]

TRACT No. 8660
SEWER PLAN AND PROFILE
SNOWBERRY STREET
HORIZ. SCALE: 1" = 40'
VERT. SCALE: 1" = 4'

PROJECT NO. 5-1150
SHEET 1 OF 4
FILE NO. 11-2697



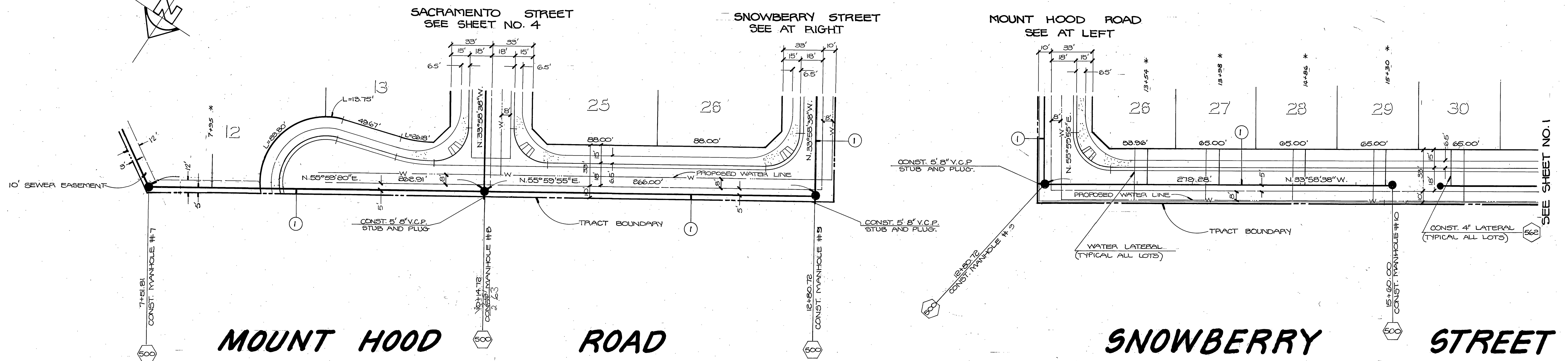
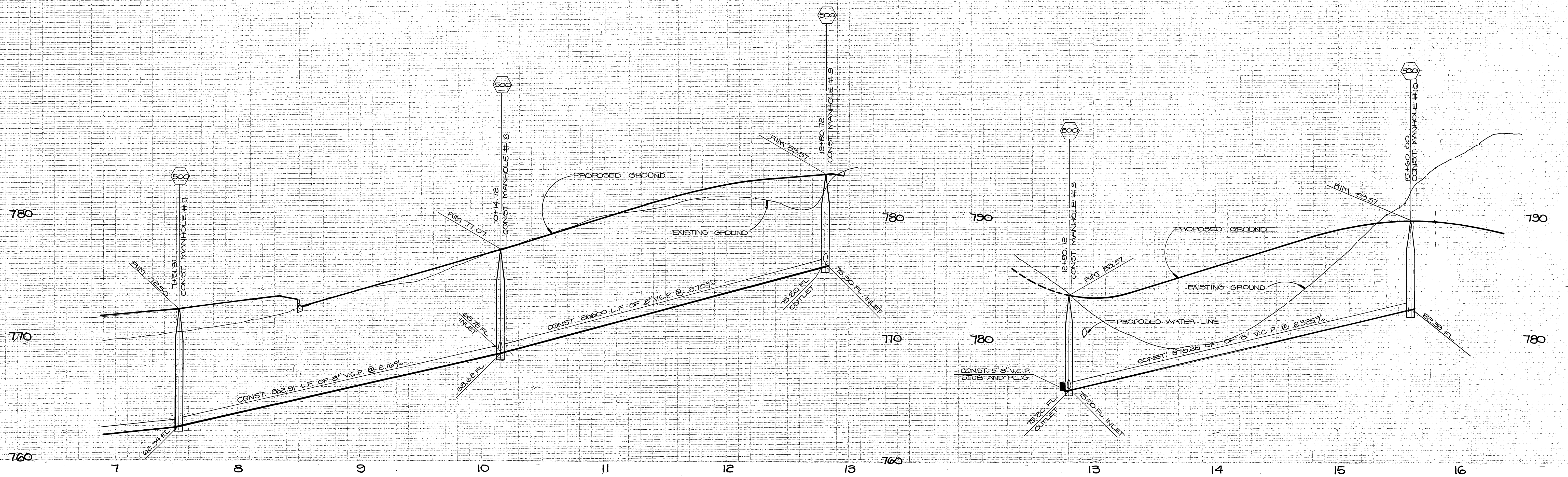
- NOTES**
- 1) THE 8" VCP WITH R=100' SHALL BE STAKED AT MIN. 12.5' INTERVALS
 - 2) THE MAX PIPE LENGTH SHALL BE 4' EACH.

CURVE DATA

R = 100.00'	Δ = 51°31'42"
T = 48.26'	L = 88.83'

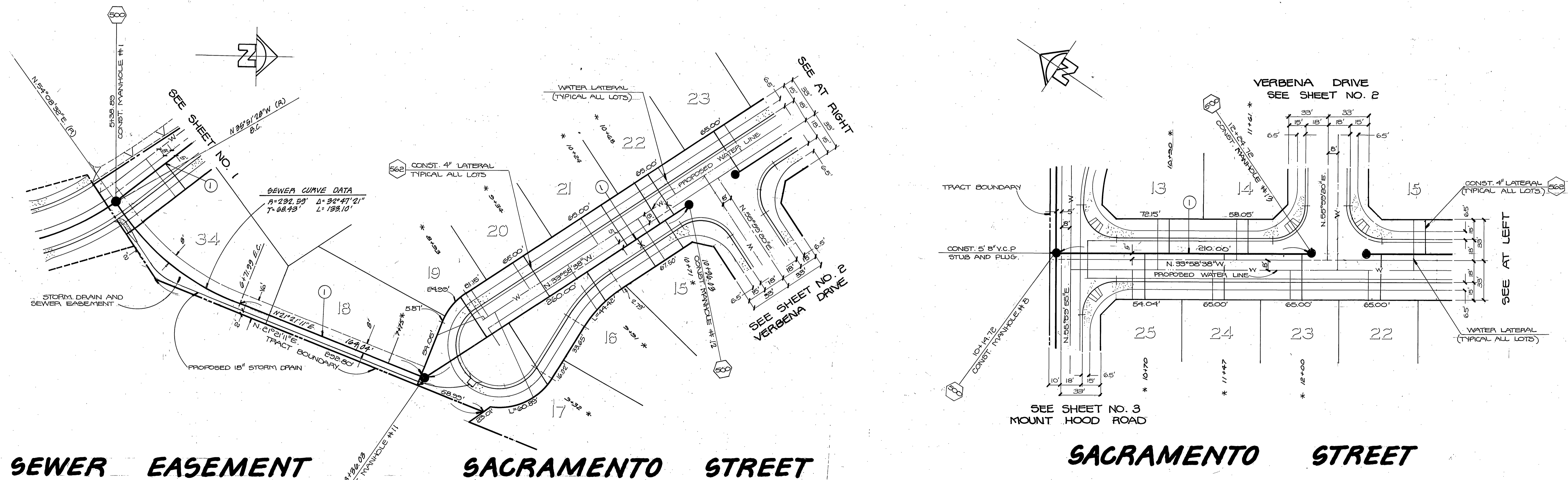
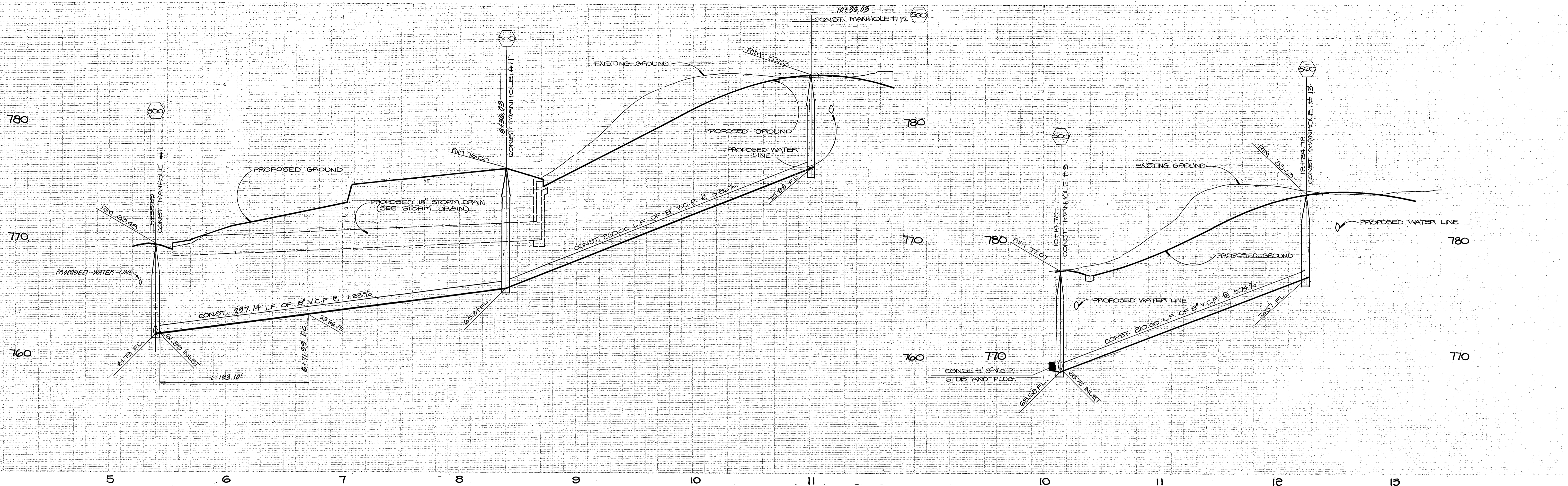
NOTE: SEE SHEET NO. 1 FOR GENERAL NOTES AND CONSTRUCTION NOTES.

CITY OF RIVERSIDE DOMESTIC SYSTEM <i>Wally Hoff</i> CHIEF UTILITIES ENGINEER, WATER. DATE: 8-31-77	HAWKINS, ROBERTSON & ASSOCIATES ENGINEERS & SURVEYORS 3750 ELIZABETH STREET-RIVERSIDE, CA. (714) 684-5822 4-21-77 <i>Charles E. Robertson</i> DATE P.C.E. 1500	CITY OF RIVERSIDE, CALIFORNIA DEPARTMENT OF PUBLIC WORKS APPROVED BY: <i>[Signature]</i> DATE: 12/2/77 PARK DEPARTMENT TRAFFIC DIVISION CHIEF P. W. ENGR. DATE: 12/14/77	TRACT NO. 8660 SEWER PLAN AND PROFILE VERBENA DRIVE AND SEWER EASEMENT HORIZ. SCALE: 1" = 40' VERT. SCALE: 1" = 4'	PROJECT NO. S-1150 SHEET 2 OF 4 FILE NO. 77-2697



NOTE: SEE SHEET NO. 1 FOR GENERAL NOTES AND CONSTRUCTION NOTES.

CITY OF RIVERSIDE DOMESTIC SYSTEM <i>Walter J. Joffe</i> CHIEF UTILITIES ENGINEER, WATER DATE 8-31-77	HAWKINS, ROBERTSON & ASSOCIATES ENGINEERS - SURVEYORS 3756 ELIZABETH STREET - RIVERSIDE, CALIF. 92504 4-21-77 DATE <i>Charles S. Robertson</i> R.C.E. 16016	AS BUILT 7/15/78 REK	CITY OF RIVERSIDE, CALIFORNIA DEPARTMENT OF PUBLIC WORKS		TRACT NO. 8660 SEWER PLAN AND PROFILE MOUNT HOOD ROAD AND SNOWBERRY STREET	PROJECT NO. S-1150 SHEET 3 OF 4 FILE NO. 17-2697
			APPROVED BY PRINCIPAL ENGINEER PARK DIVISION TRAFFIC DIVISION CHIEF P. W. ENGR.	BY DATE 7/12/77 11/16		



SEWER EASEMENT

SACRAMENTO STREET

SACRAMENTO STREET

NOTE: SEE SHEET NO. 1 FOR GENERAL NOTES AND CONSTRUCTION NOTES.

CITY OF RIVERSIDE DOMESTIC SYSTEM <i>Wally Hoff</i> CHIEF UTILITIES ENGINEER, WATER DATE 8-31-77	HAWKINS, ROBERTSON & ASSOCIATES ENGINEERS SURVEYORS 3756 ELIZABETH STREET - RIVERSIDE, CA. (714) 684-3522 4-21-77 DATE <i>Charles G. Robinson</i> P.C.E. 15016	CITY OF RIVERSIDE, CALIFORNIA DEPARTMENT OF PUBLIC WORKS APPROVED BY: <i>Paul J. Walker</i> DIRECTOR OF PUBLIC WORKS DATE 12/16/77	TRACT NO. 8660 SEWER PLAN AND PROFILE SACRAMENTO STREET AND SEWER EASEMENT SHEET 4 OF 4	PROJECT NO. S-1150 FILE NO. 77-2697