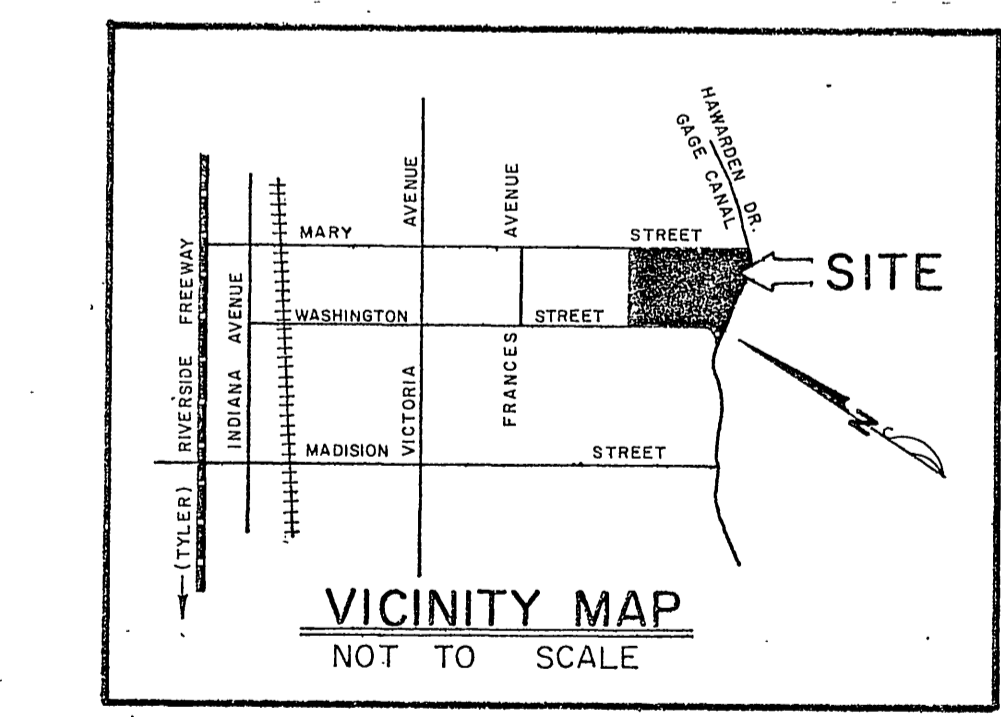


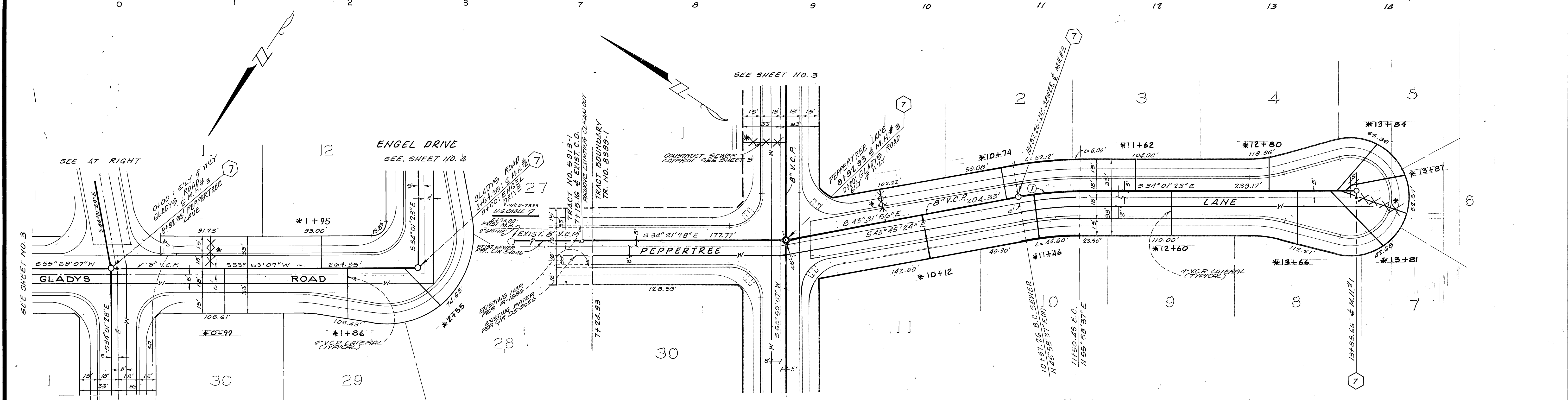
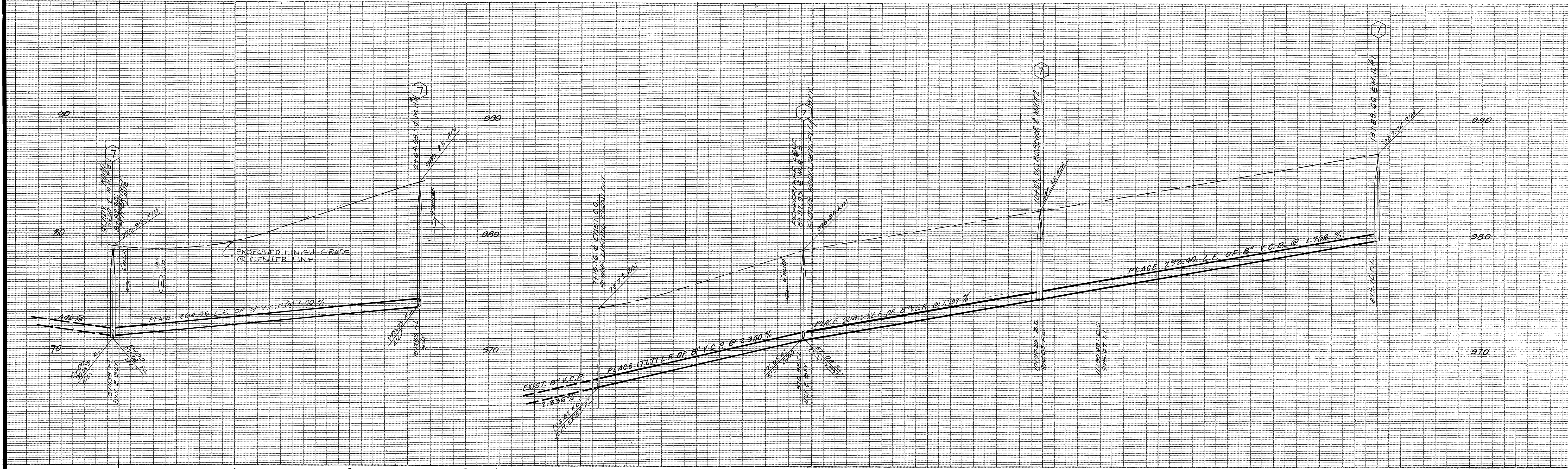
- GENERAL NOTES**
- IT SHALL BE THE RESPONSIBILITY OF THE CONTRACTOR TO CLEAR THE RIGHT OF WAY IN ACCORDANCE WITH PROVISIONS OF LAW AS IT AFFECTS EACH UTILITY INCLUDING IRRIGATION LINES AND APPURTENANCES AND AT NO COST TO THE CITY.
 - CONSTRUCTION SHALL BE IN ACCORDANCE WITH THE CITY OF RIVERSIDE, DEPT. PUBLIC WORKS, STANDARD DRAWINGS, AND THE STANDARD SPECIFICATIONS FOR PUBLIC WORKS CONSTRUCTION, 1976 EDITION.
 - LOCATION OF LATERALS TO BE DETERMINED IN THE FIELD AT THE DIRECTION OF THE OWNER. AVOID CONFLICT WITH PROPOSED AND OR EXISTING FACILITIES.
 - CONTRACTOR IS TO VERIFY EXISTING SEWER ELEVATIONS PRIOR TO CONSTRUCTION.
 - THE SEWER CONTRACTOR SHALL ADJUST MANHOLES TO FINAL GRADE AFTER PAVING IS COMPLETED.
 - A PLUG SHALL BE INSTALLED AND WILL REMAIN IN PLACE WHERE THE NEW SEWER CONNECTS WITH THE EXISTING SEWER UNTIL THE NEW SEWER IS ACCEPTED BY THE CITY.
 - MANHOLES TO BE CONSTRUCTED PER STANDARD DRAWING 500
 - SEWER CLEANOUTS TO BE CONSTRUCTED PER STANDARD DRAWING NO. 500

BENCH MARK:
 CITY OF RIVERSIDE B.M. F&G SPIKE AND LEAD IN NORTH END OF EASTERLY HEADWALL, WASHINGTON ST. & GAGE CANAL. ELEV. = 1010.56'



NOTE:
 "The private engineer signing these plans is responsible for assuring the accuracy and acceptability of the work hereon. In the event of discrepancies arising during construction as a result of errors or omissions, the private engineer shall be responsible for determining an acceptable solution and revising the plans for approval by the City."

CITY OF RIVERSIDE DOMESTIC SYSTEM <i>Wesley Hoffman</i> 7-27-77 CHIEF UTILITIES ENGINEER, WATER	J. F. DAVIDSON ASSOCIATES CIVIL ENGINEERS - SURVEYORS - PLANNERS RIVERSIDE, CALIFORNIA APPROVED BY <i>Paul W. Carty</i> DATE 6/8/77 R.E. No. 12550	CITY OF RIVERSIDE, CALIFORNIA DEPARTMENT OF PUBLIC WORKS APPROVED BY <i>[Signature]</i> DATE 3/31/78 PARK DEPARTMENT 10-26 TRAFFIC DIVISION 3-20 ASSISTANT CITY ENG.	TITLE SHEET TRACT NO. 8399-1 SEWER IMPROVEMENTS	PROJECT NO. 5-1151
			*As built 9-24-85 7/4 INDEXED RR	SHEET 1 OF 5 FILE NO. 5554



CURVE DATA

Δ	= 10°00'00"
R	= 303.00'
L	= 53.23'
T	= 26.65'

J. F. DAVIDSON ASSOCIATES
 CIVIL ENGINEERS - SURVEYORS - PLANNERS
 RIVERSIDE, CALIFORNIA

APPROVED BY: *J. W. Canty* DATE: 6/8/77
 R.E. No. 17550

W.O. 4922 FOR CASHMAN F.B.

BENCH MARK:
 CITY OF RIVERSIDE B.M. F6F.,
 SPIKE AND LEAD IN NORTH
 END OF EASTERLY HEADWALL,
 WASHINGTON ST. & GAGE CANAL. *As built 9-24-85 7/2
 ELEV. = 1010.56'

CITY OF RIVERSIDE
 DOMESTIC SYSTEM

Wesley Hoffman 7-27-77
 CHIEF UTILITIES ENGINEER, WATER DATE

CITY OF RIVERSIDE, CALIFORNIA
 DEPARTMENT OF PUBLIC WORKS

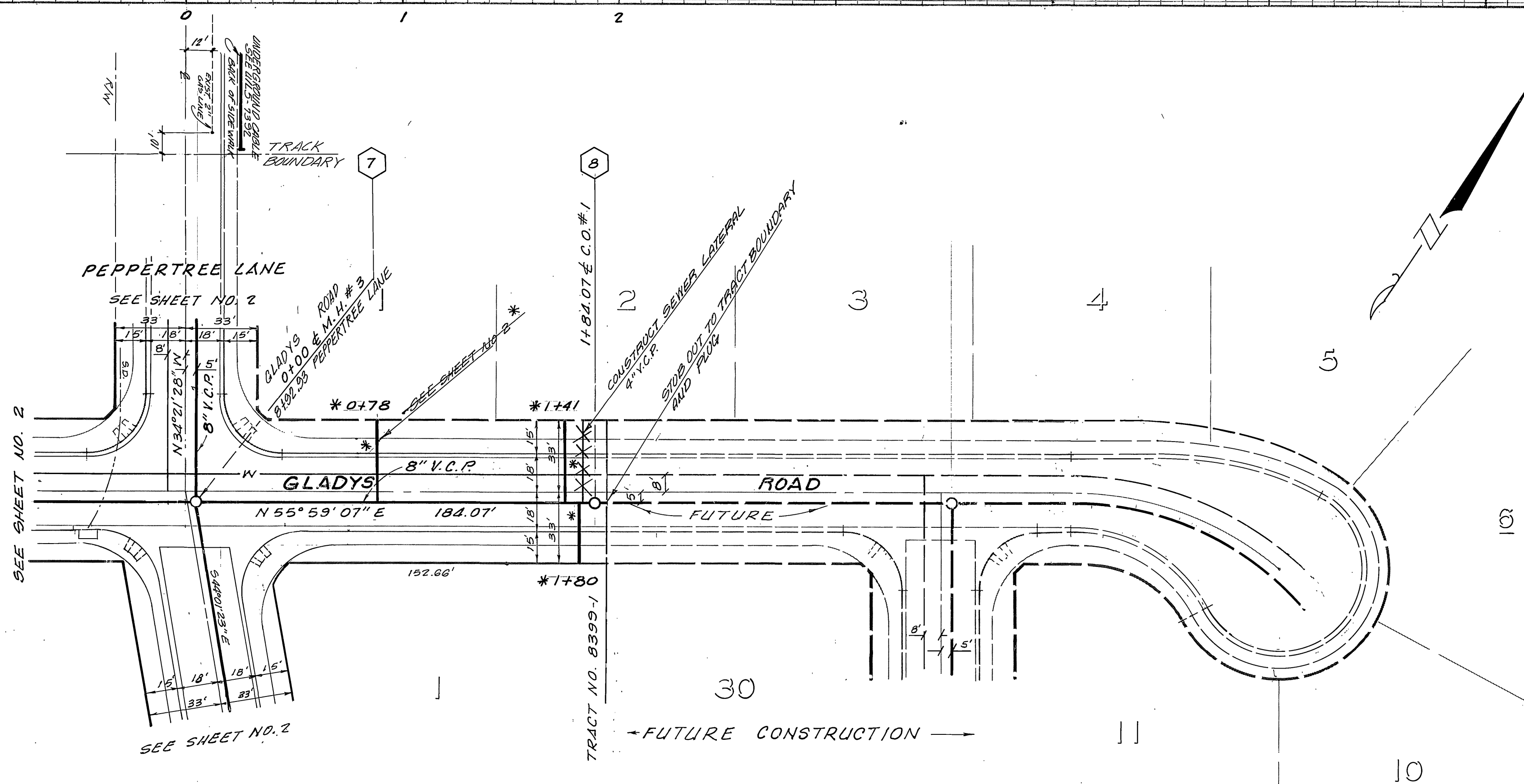
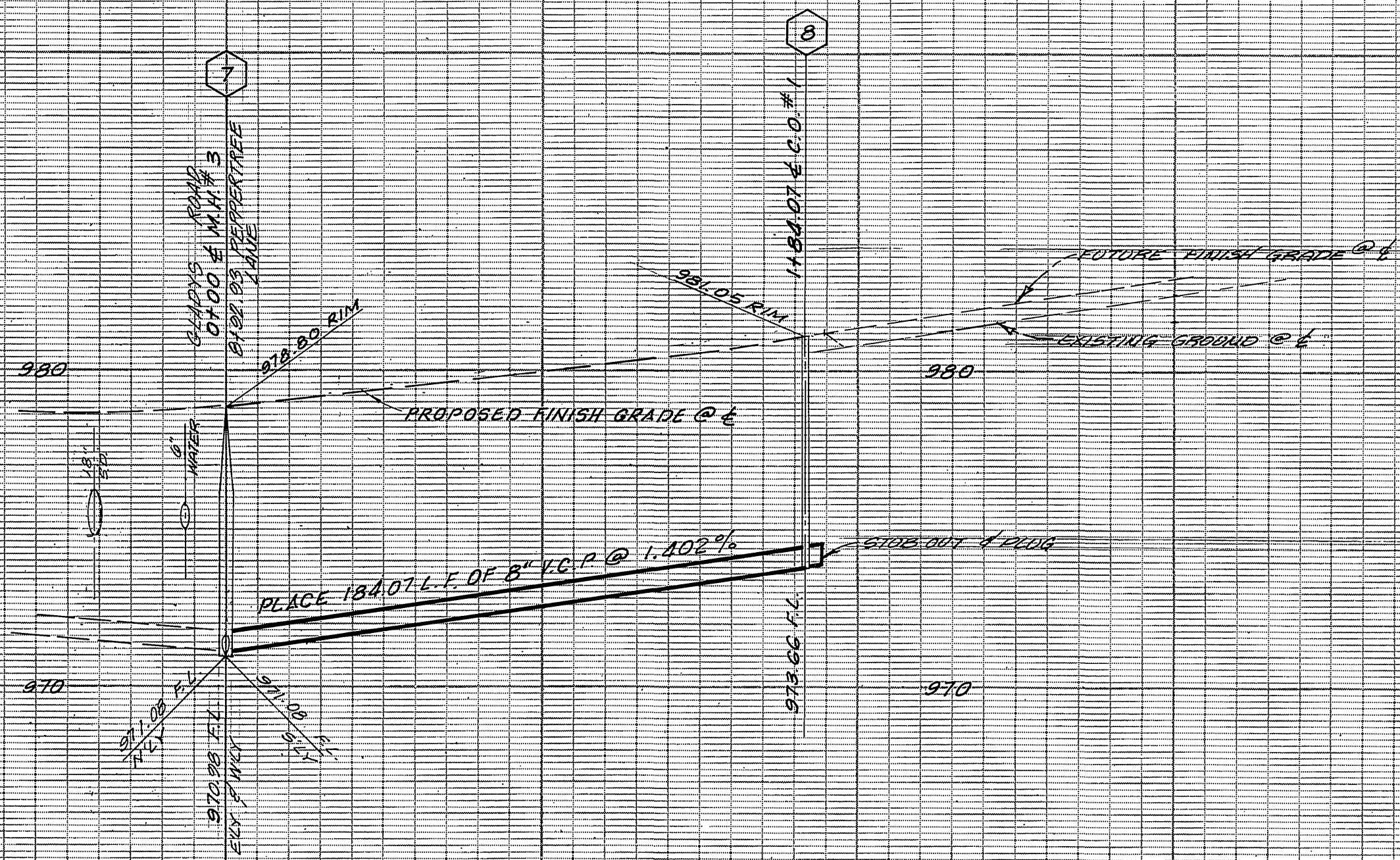
APPROVED BY: *Thomas J. White*
 PRINCIPAL ENGINEER
 PARK DEPARTMENT
 TRAFFIC DIVISION
 CHIEF P. W. ENGR.

DATE: 3/31/78

SEWER PLAN AND PROFILE
 TRACT NO. 8399-1
 PEPPERTREE LANE
 GLADYS ROAD

HORIZ. SCALE: 1" = 40' VERT. SCALE: 1" = 4'

PROJECT NO. 5-1151
 SHEET 2 OF 5
 FILE NO. 5554



J. F. DAVIDSON ASSOCIATES
 CIVIL ENGINEERS - SURVEYORS - PLANNERS
 RIVERSIDE, CALIFORNIA

APPROVED BY *J. W. City* DATE 6/8/77
 R.E. No. 17350

W.O. 4322 FOR: CASHMAN F.B.

BENCH MARK:
 CITY OF RIVERSIDE B.M. F6F,
 SPIKE AND LEAD IN NORTH END
 OF EASTERLY HEADWALL,
 WASHINGTON ST. & GAGE CANAL. * As built 9-24-85 7/2
 ELEV. = 1010.56' INDEXED RR

CITY OF RIVERSIDE
 DOMESTIC SYSTEM

Wesley Johnson 7-27-77
 CHIEF UTILITIES ENGINEER, WATER DATE

MARK	REVISIONS	APPR.	DATE

DESIGNED BY *GFH* DRAWN BY *AM* CHECKED BY *AM*

CITY OF RIVERSIDE, CALIFORNIA
 DEPARTMENT OF PUBLIC WORKS

APPROVED BY *Wm. J. S.* DATE 3/5/77
 PRINCIPAL ENGINEER
 PARK DEPARTMENT
 TRAFFIC DIVISION
 CHIEF P. W. ENGR.

APPROVED BY *Wm. J. S.*
 DIRECTOR OF PUBLIC WORKS

DATE 3/21/78

SEWER PLAN AND PROFILE

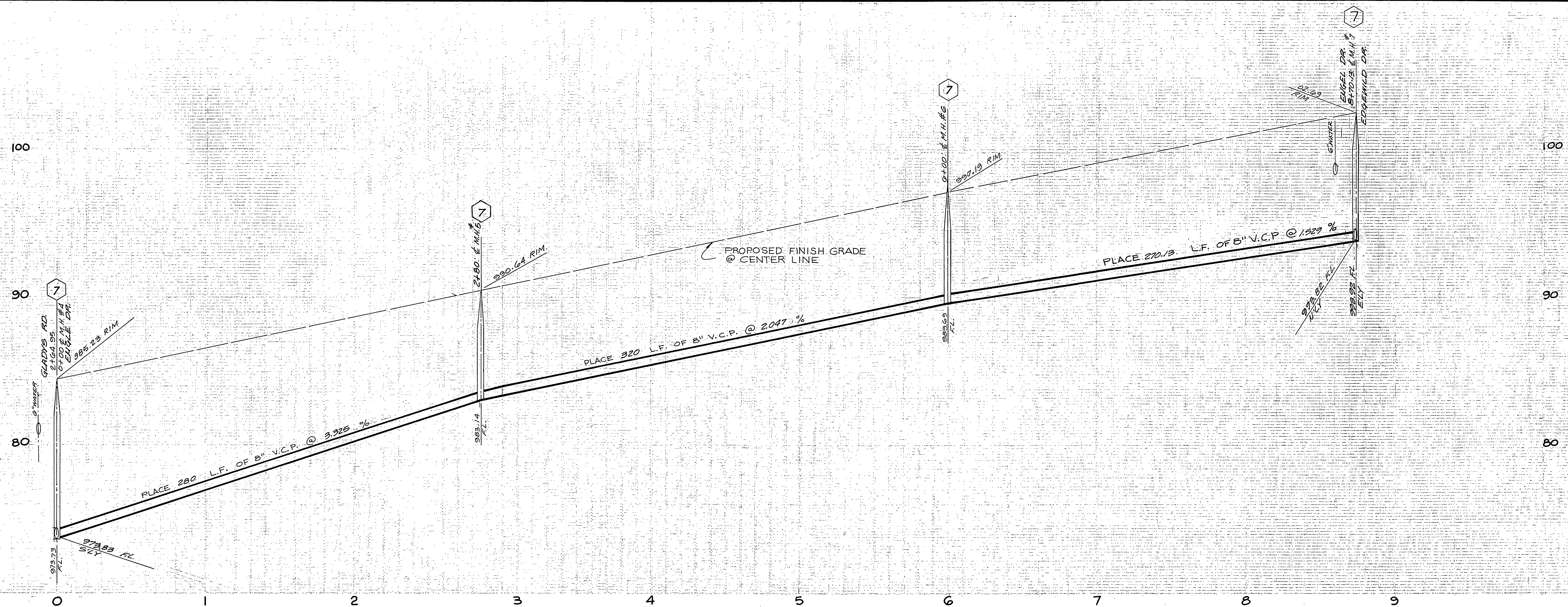
TRACT 8399-1
GLADYS ROAD

HORIZ. SCALE: 1" = 40' VERT. SCALE: 1" = 4'

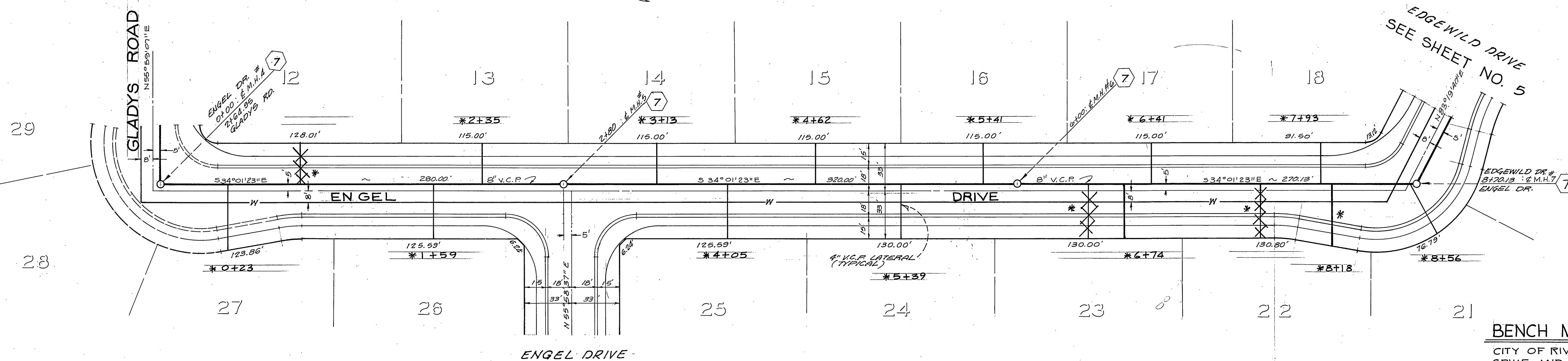
PROJECT NO. **9-1151**

SHEET **3** OF **5**

FILE NO. 5554



SEE SHEET NO. 2



BENCH MARK:
 CITY OF RIVERSIDE B.M. F.G.F.,
 SPIKE AND LEAD IN NORTH END
 OF EASTERLY HEADWALL,
 WASHINGTON ST. & GAGE CANAL
 ELEV. = 1010.56'

CITY OF RIVERSIDE
 DOMESTIC SYSTEM
 Chief Utilities Engineer, Water
 Date 7-27-77

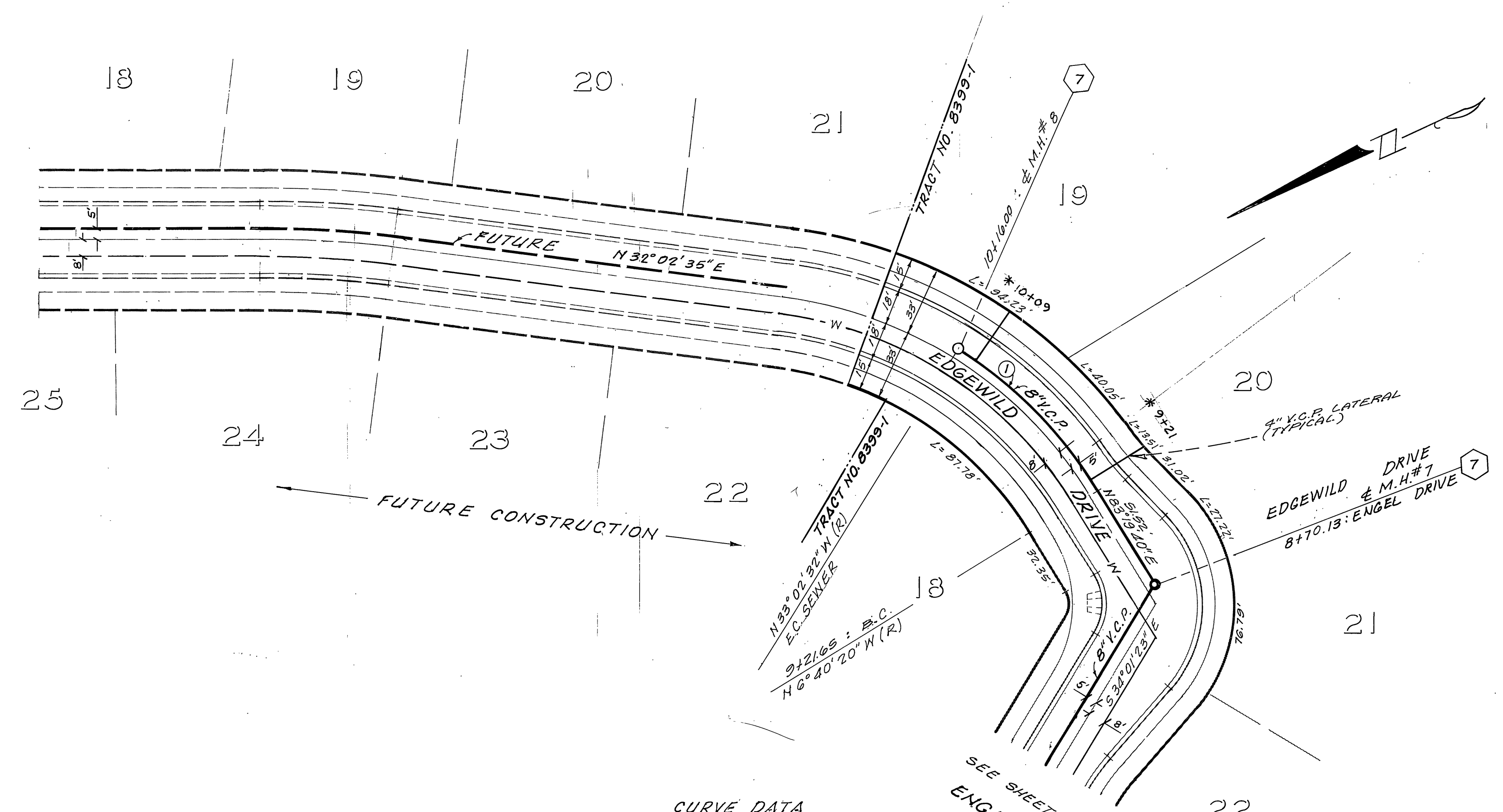
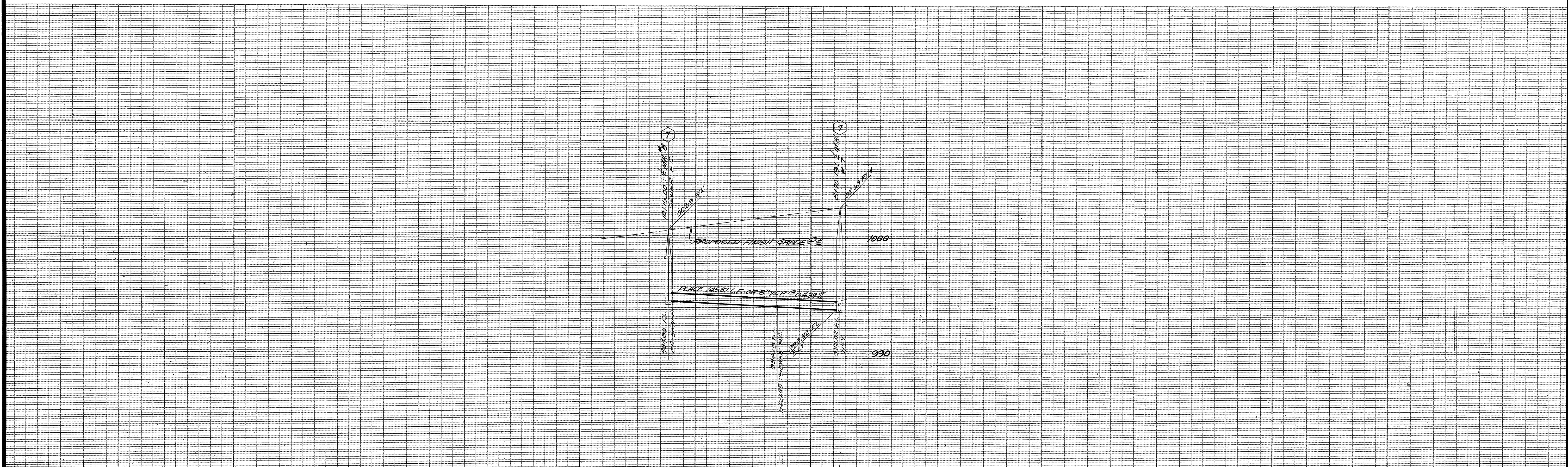
J. F. DAVIDSON ASSOCIATES
 CIVIL ENGINEERS - SURVEYORS - PLANNERS
 RIVERSIDE, CALIFORNIA
 APPROVED BY [Signature] DATE 6/17/77
 R.E. No. 17550
 FOR: CASHMAN F.B.

MARK	REVISIONS	APPR.	DATE

CITY OF RIVERSIDE, CALIFORNIA
 DEPARTMENT OF PUBLIC WORKS
 APPROVED BY [Signature] DATE 3/21/78
 DIRECTOR OF PUBLIC WORKS
 DESIGNED BY [Signature] DRAWN BY [Signature] CHECKED BY [Signature]

SEWER PLAN & PROFILE	PROJECT NO.
TRACT 8399-1	S-1151
ENGEL DRIVE	SHEET 4 OF 5
HORIZ. SCALE: 1" = 40'	VERT. SCALE: 1" = 4'
FILE NO. 5554	

W.O. 4982 CASHMAN



CURVE DATA
 ① Δ = 26° 22' 12"
 R = 205.00'
 L = 94.35'
 T = 48.03'

CITY OF RIVERSIDE
 DOMESTIC SYSTEM
Wesley Taylor 7-27-77
 CHIEF UTILITIES ENGINEER, WATER DATE

J. F. DAVIDSON ASSOCIATES
 CIVIL ENGINEERS - SURVEYORS - PLANNERS
 RIVERSIDE, CALIFORNIA
 APPROVED BY *J. W. City* DATE 6/8/77
 R.E. No. 17550
 W.O. 1972 FOR: CASHMAN F.B.

BENCH MARK:
 CITY OF RIVERSIDE B.M. F6F,
 SPIRE AND LEAD IN NORTH END
 OF EASTERLY HEADWALL,
 WASHINGTON ST. & GAGE CANAL.
 ELEV = 1010.56'
 *As built 9-24-85 T4
 INDEXED RR

MARK	REVISIONS	APPR.	DATE

DESIGNED BY *AW* DRAWN BY *AW* CHECKED BY *AW*

CITY OF RIVERSIDE, CALIFORNIA
 DEPARTMENT OF PUBLIC WORKS
 APPROVED BY *[Signature]* DATE 3/31
 PRINCIPAL ENGINEER
 PARK DEPARTMENT
 TRAFFIC DIVISION
 CHIEF P. W. ENGR.
 DATE 3/24/78

SEWER PLAN AND PROFILE
TRACT 8399-1
EDGEWILD DRIVE
 PROJECT NO. **S-1151**
 SHEET **5** OF **5**
 HORIZ. SCALE: 1" = 40' VERT. SCALE: 1" = 4'
 FILE NO. 5554