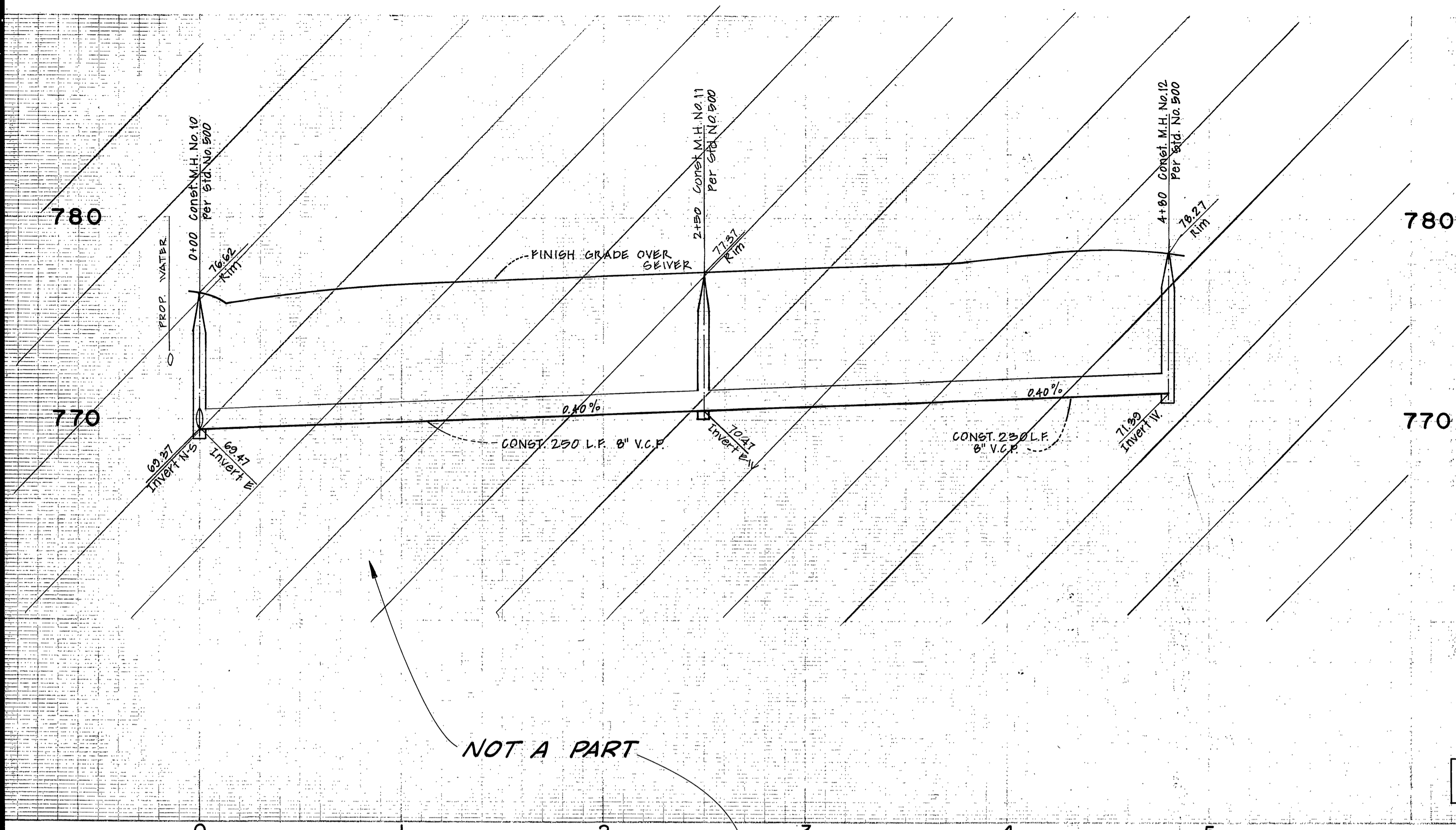
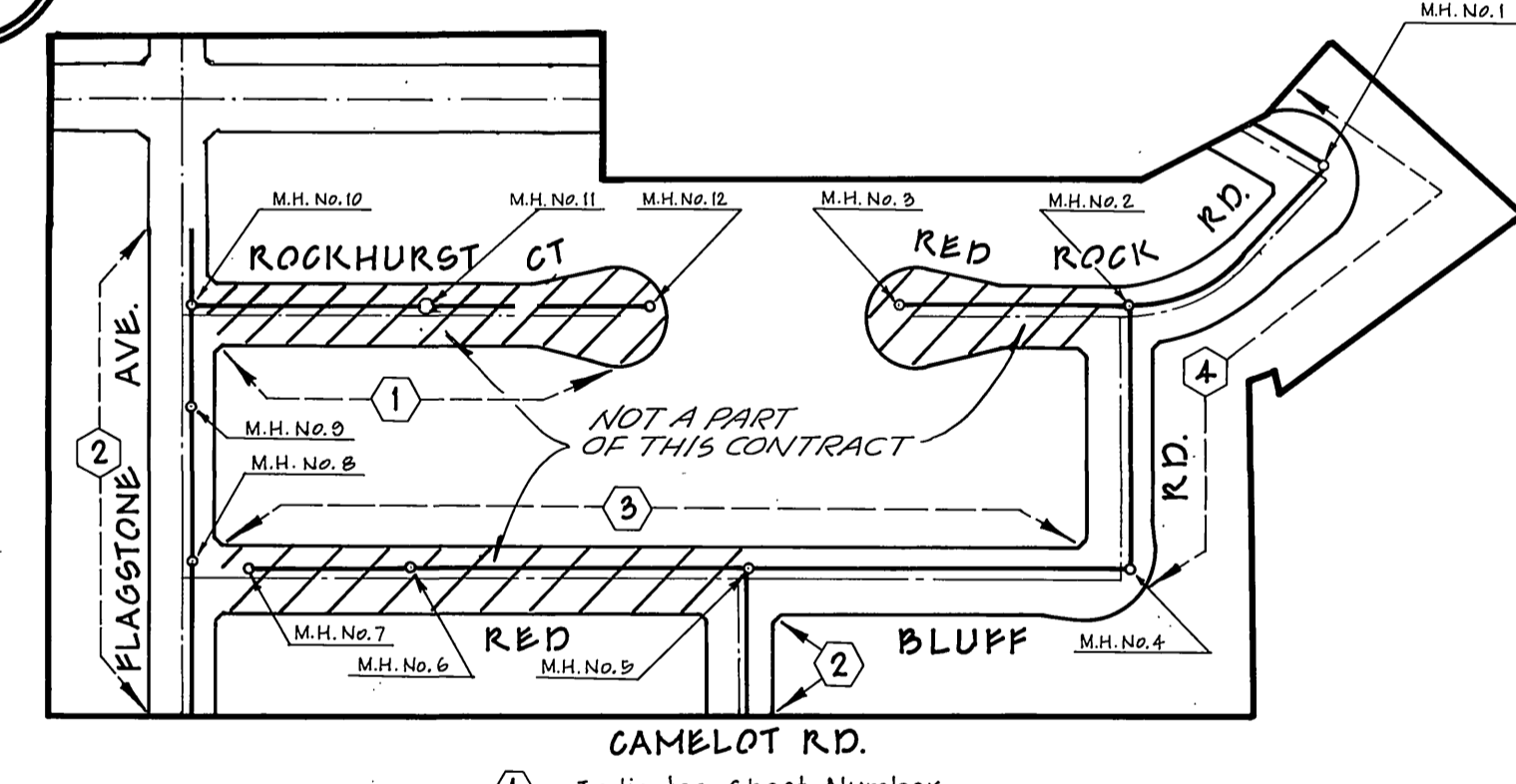
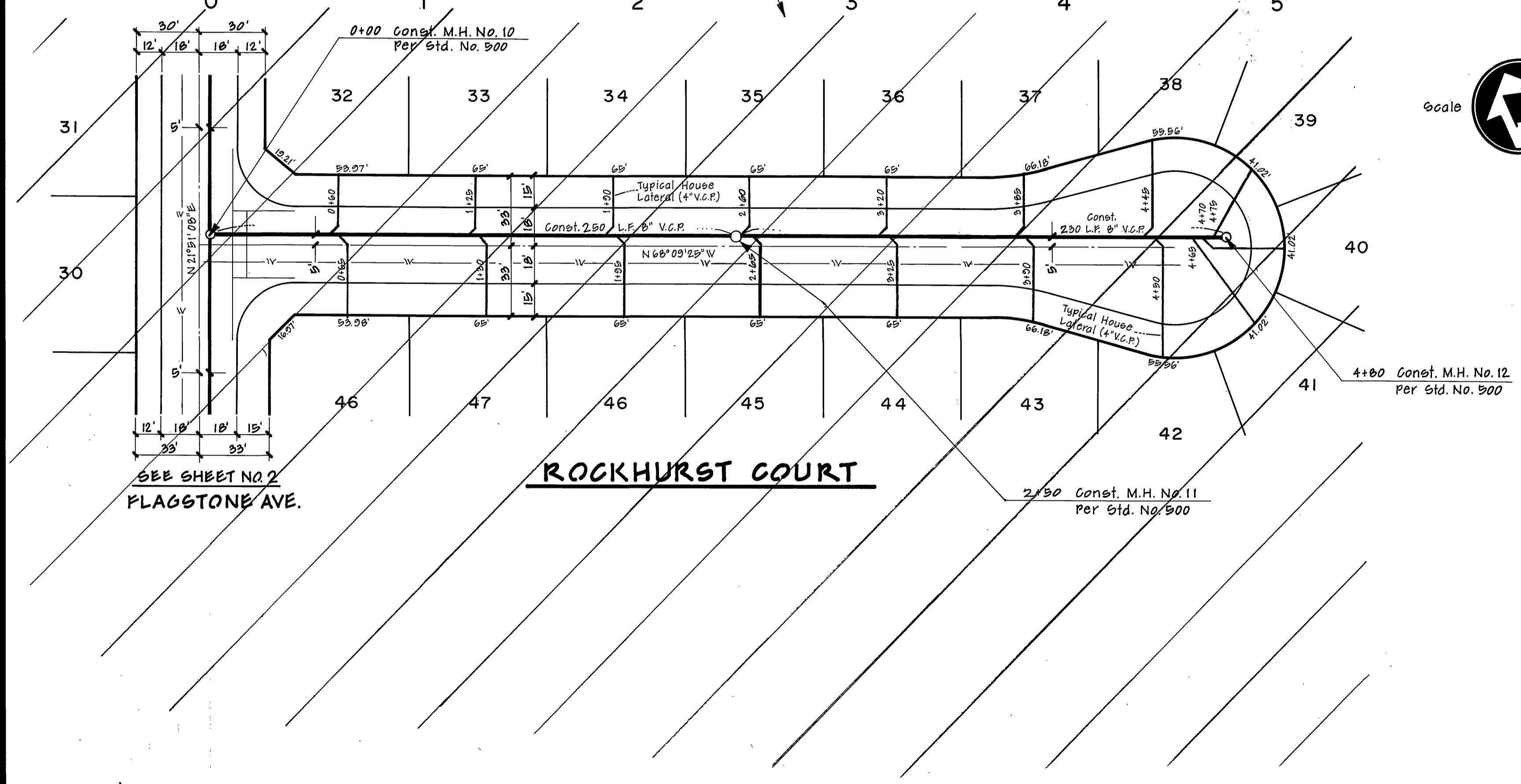


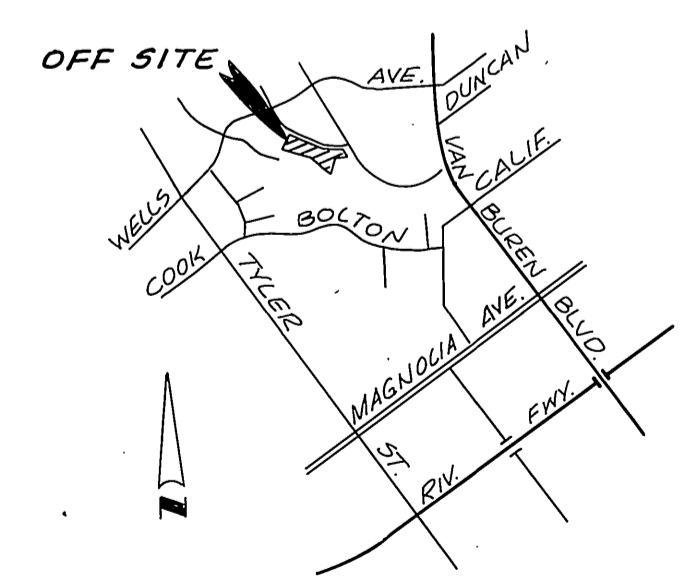
Encase sewer main 3.6' each side of water main crossing with type 2" concrete encasement as per Public Utility Divg. C.V.D.-023.



PROFILE SCALE
Horiz. 1"=40'
Vert. 1"=4'



INDEX MAP
1"=200'



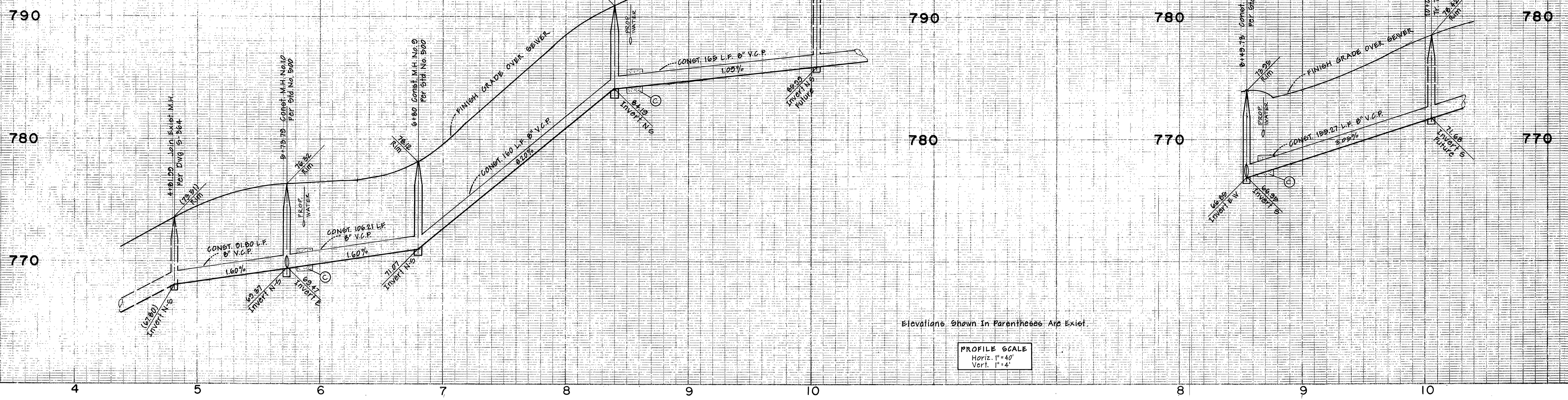
- GENERAL NOTES
1. Construction shall be in accordance with Standard Specifications for Public Works Construction, 1976 Edition, and the City of Riverside Standard Drawings.
 2. It shall be the responsibility of the contractor to clear the right of way in accordance with the provisions of law as it affects each utility, irrigation line appurtenances and at no cost to the City.
 3. Laterals to be 4" and extended to property line.
 4. Prior to construction of sewer, the contractor is to expose existing sewer and contact the Engineer for verification of existing elevations.
 5. The sewer contractor is to adjust manhole covers to final grade after paving is completed.
 6. A plug shall be installed and will remain in place where the new sewer connects with the existing sewer until such time that the new sewer is accepted by the City.

NOTICE TO CONTRACTOR
The existence and location of any underground utility pipe or substructures shown on these plans are obtained by a search of the available records. To the best of our knowledge there are no existing utilities except as shown on these plans. The contractor is required to take due precautionary measures to protect the utility lines shown and any other lines not of record.

NOT BUILT
SEE S-1163

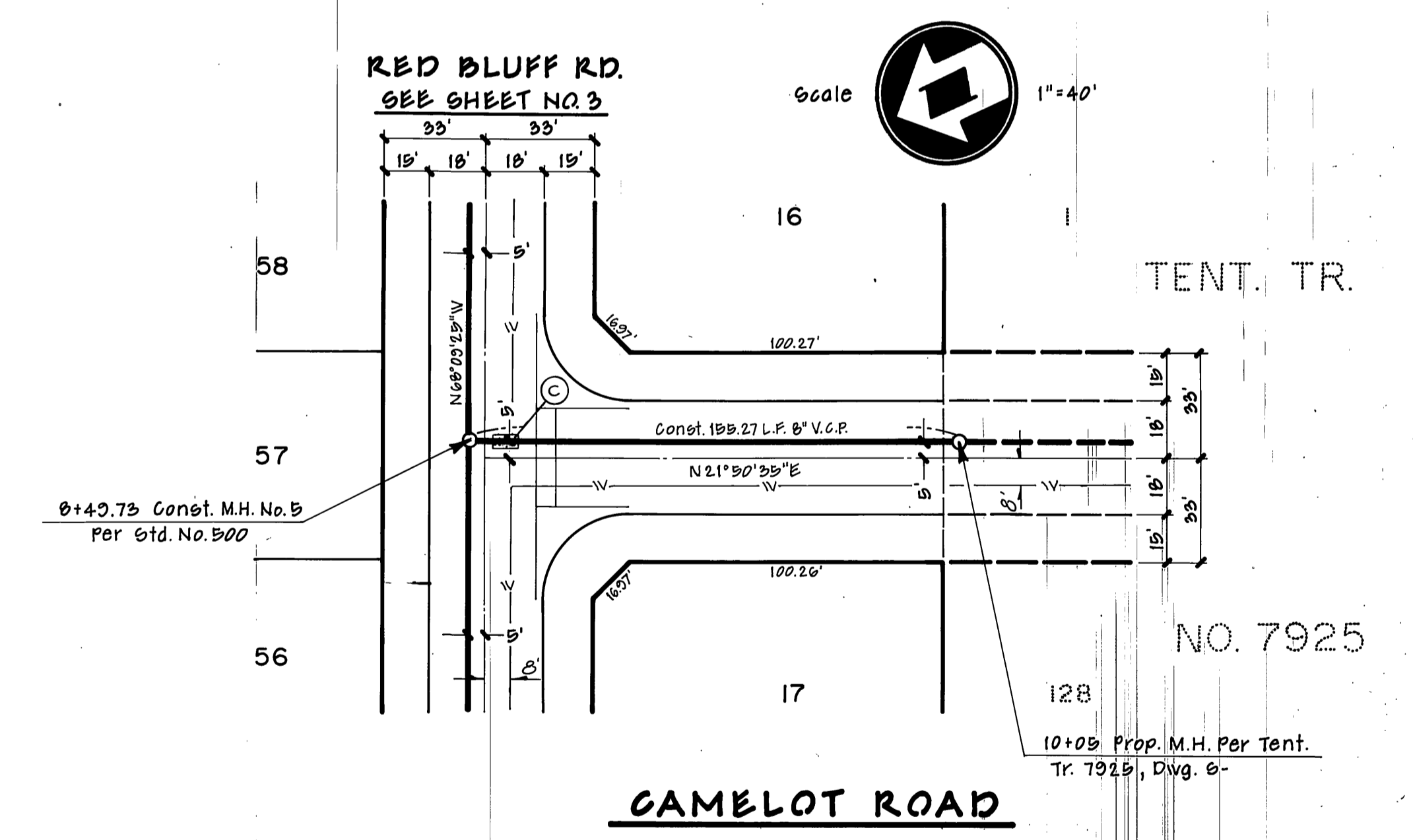
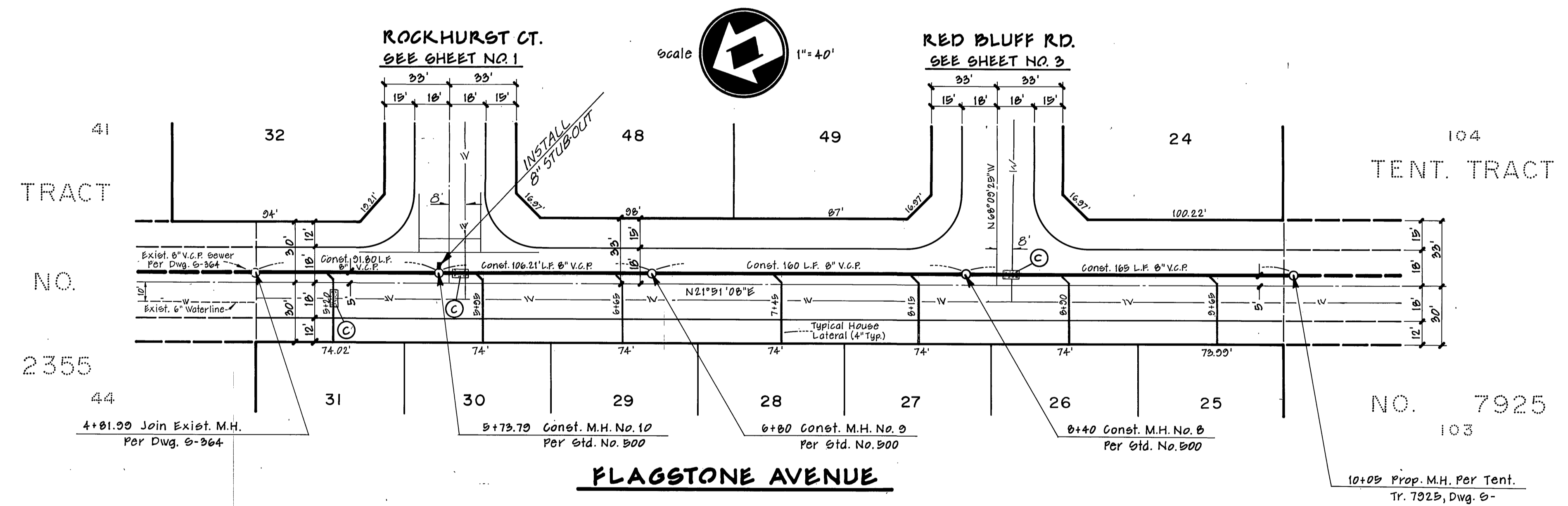
THE PRIVATE ENGINEER SIGNING THESE PLANS IS RESPONSIBLE FOR ACCURACY AND ACCEPTABILITY OF THE WORK HEREON. IN THE EVENT OF DISCREPANCIES ARISING DURING CONSTRUCTION, THE PRIVATE ENGINEER SHALL BE RESPONSIBLE FOR DETERMINING AN ACCEPTABLE SOLUTION AND REVISING THE PLANS FOR APPROVAL BY THE CITY.

CITY OF RIVERSIDE DOMESTIC SYSTEM [Signature] CHIEF UTILITIES ENGINEER, WATER Date 11-1-77	ALBERT A. WEBB ASSOCIATES CIVIL ENGINEERS RIVERSIDE, CALIFORNIA APPROVED BY [Signature] DATE 6-1-77 R.E. No. 2876		CITY OF RIVERSIDE, CALIFORNIA PUBLIC WORKS DEPARTMENT APPROVED BY [Signature] DATE 11-9-77 PRINCIPAL ENGINEER TRAFFIC DIVISION CHIEF PUB. WKS. ENGR. [Signature]		SEWER IMPROVEMENT PLANS ACCOUNT No. DRAWING NUMBER TRACT 7948 & 7925 SHEET INDEX 5-1153 SHEET 1 OF 4
	W.O. FOR:	F.B.	DESIGNED BY P.E. DRAWN BY R.O.K. CHECKED BY:	DATE 11-9-77	SCALE: HORIZ. 1"=40' VERT. 1"=4' 70-155-2



Elevations Shown in Parentheses Are Exist.

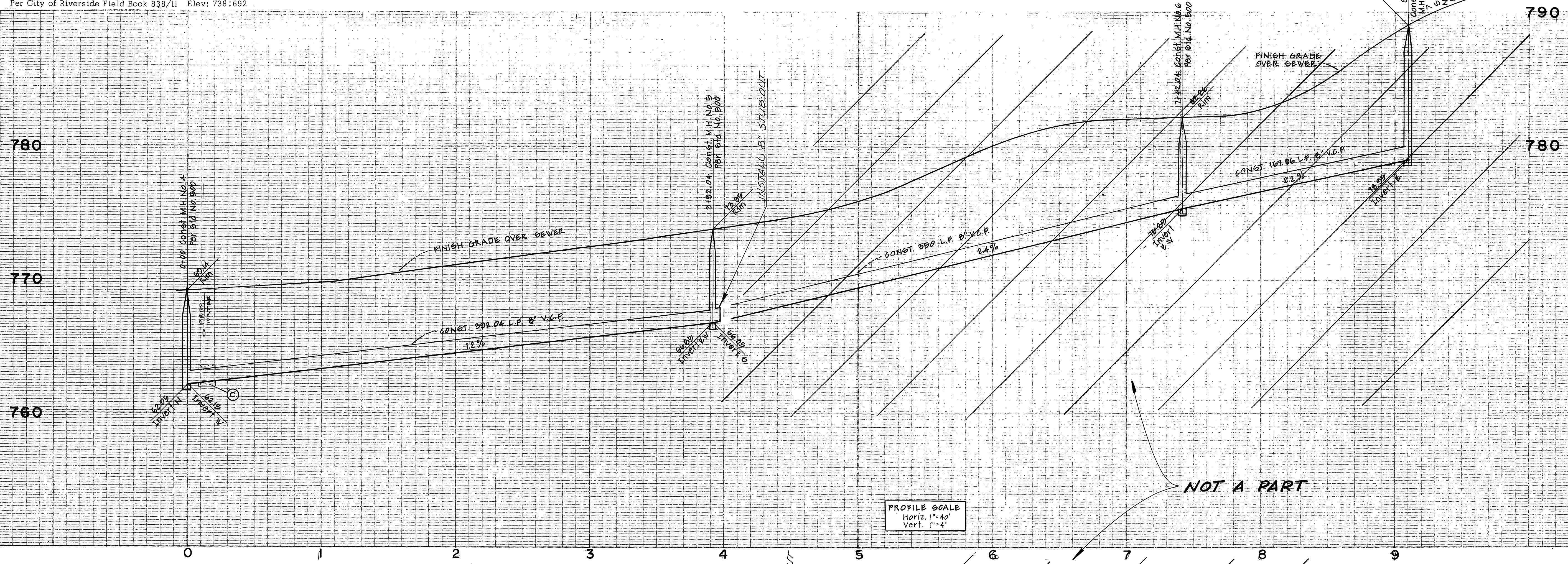
PROFILE SCALE
Horiz. 1"=40'
Vert. 1"=4'



SEE S-1168

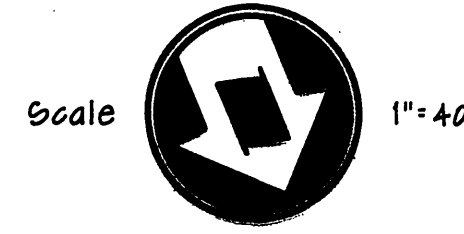
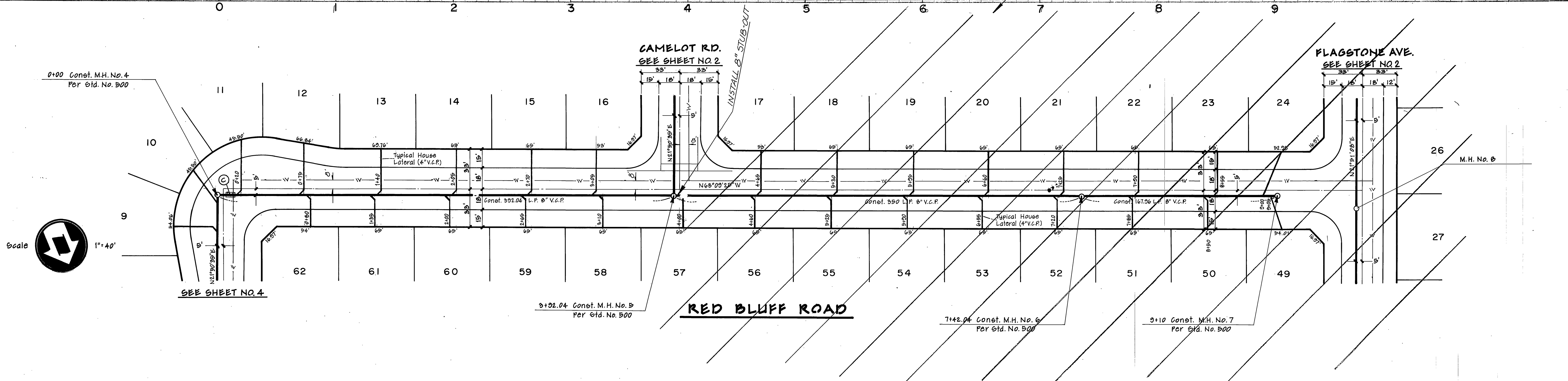
OFF SITE

CITY OF RIVERSIDE DOMESTIC SYSTEM Chief Utilities Engineer, Water Date 11-1-77	ALBERT A. WEBB ASSOCIATES CIVIL ENGINEERS RIVERSIDE, CALIFORNIA APPROVED BY: [Signature] DATE 6-1-77 R.E. No. 9876	CITY OF RIVERSIDE, CALIFORNIA PUBLIC WORKS DEPARTMENT APPROVED BY: [Signature] DATE 12-8-77 DIRECTOR OF PUBLIC WORKS	SEWER IMPROVEMENT PLANS	ACCOUNT No. DRAWING NUMBER
			TRACT 7948 & 7925 FLAGSTONE AVENUE CAMELOT ROAD	5-1153 SHEET 2 OF 4
W.O. FOR:		DESIGNED BY: P.E.D. DRAWN BY: R.G.K. CHECKED BY:		SCALE: HORIZ. 1"=40' VERT. 1"=4' TG-155-B



PROFILE SCALE
Horiz. 1"=40'
Vert. 1"=4'

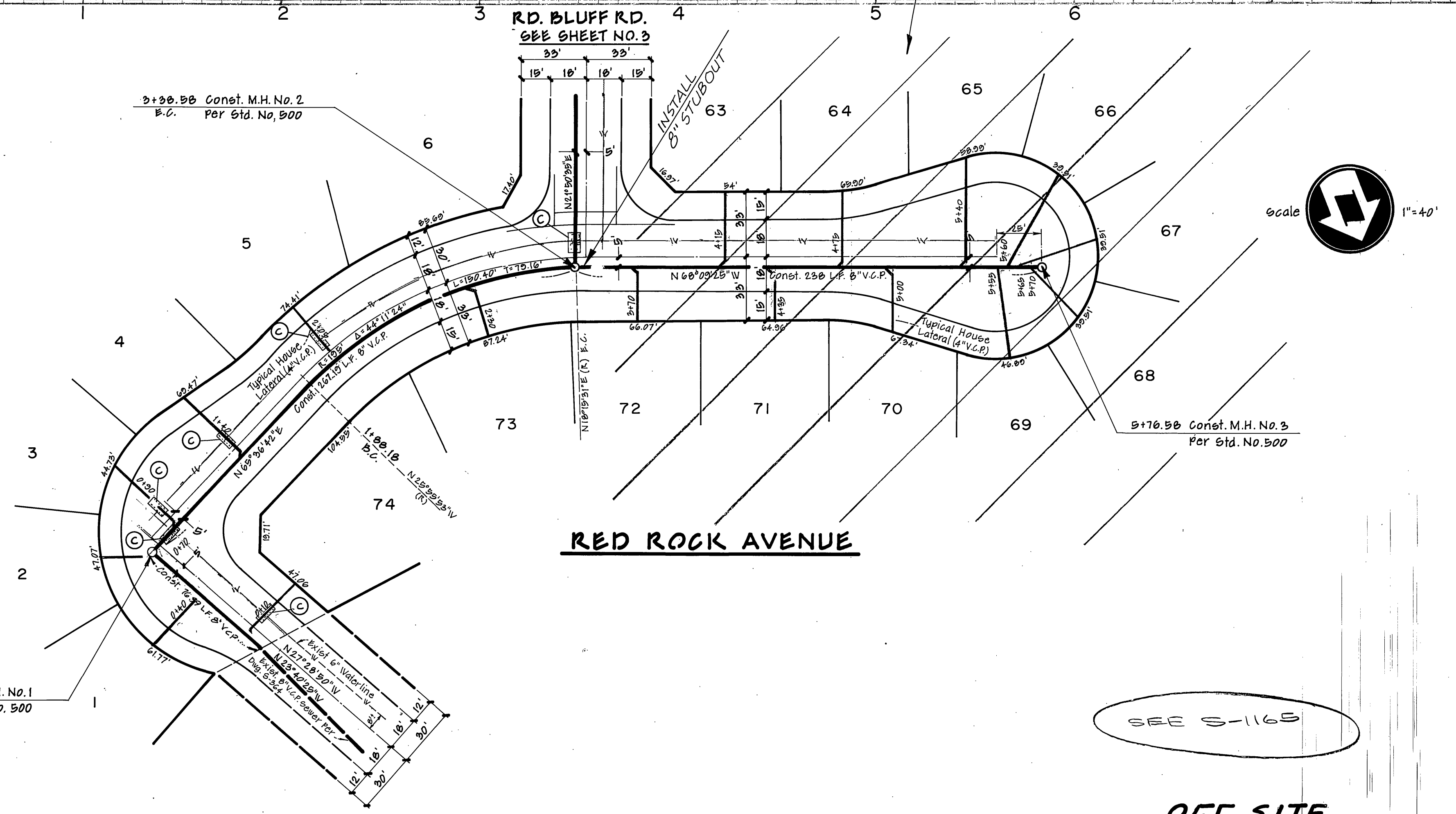
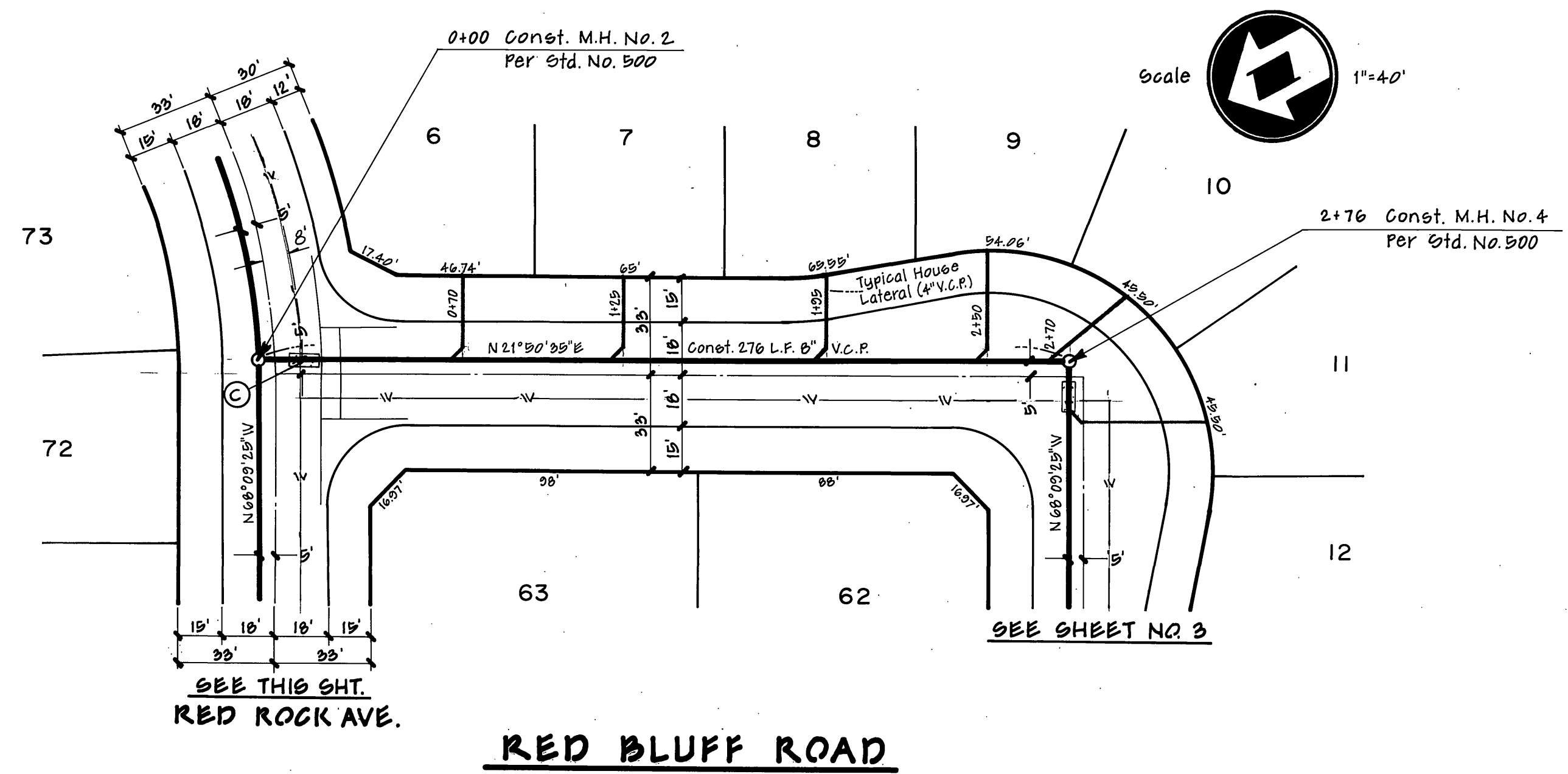
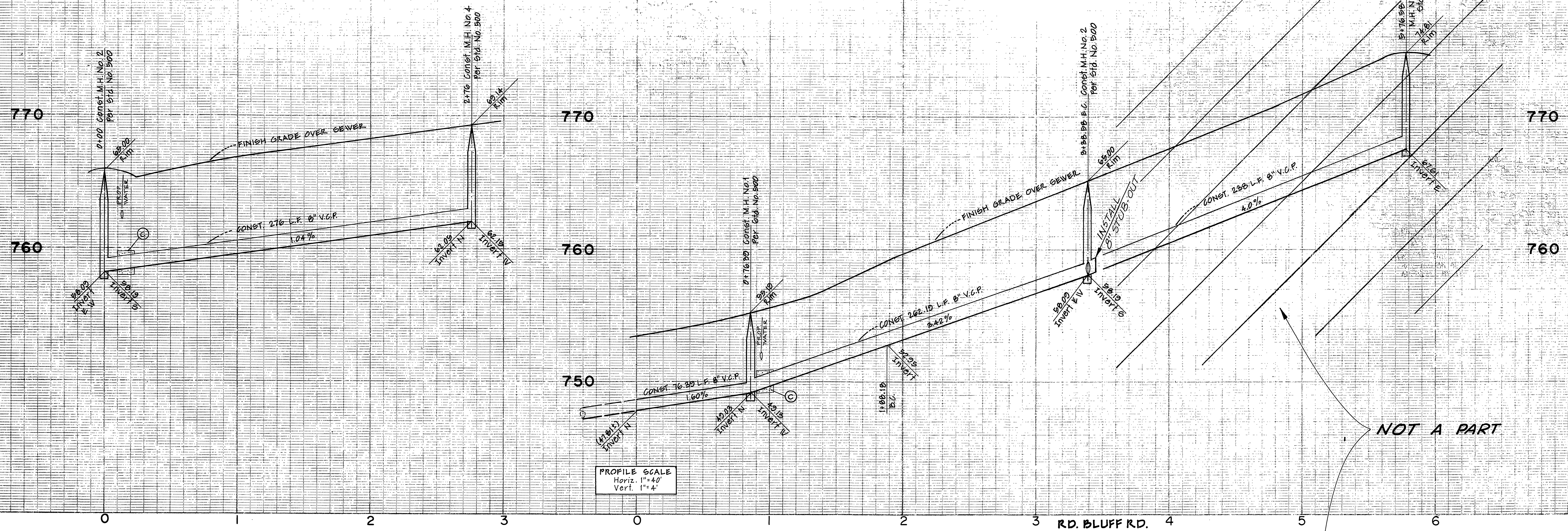
NOT A PART



SEE S-116B

OFF SITE

CITY OF RIVERSIDE DOMESTIC SYSTEM <i>Markus Stefan</i> CHIEF UTILITIES ENGINEER, WATER 11-1-77 Date	ALBERT A. WEBB ASSOCIATES CIVIL ENGINEERS RIVERSIDE, CALIFORNIA APPROVED BY: <i>[Signature]</i> DATE: 6-1-77 R.E. No. 2876	CITY OF RIVERSIDE, CALIFORNIA PUBLIC WORKS DEPARTMENT APPROVED BY: <i>[Signature]</i> DATE: 12-8-77 PRINCIPAL ENGINEER PARK DEPARTMENT TRAFFIC DIVISION CHIEF PUB. WKS. ENGR.	SEWER IMPROVEMENT PLANS	ACCOUNT No.
			TRACT 7948 & 7925 RED BLUFF ROAD	DRAWING NUMBER
			SHEET 3 OF 4	5-1153
			SCALE: HORIZ. 1"=40' VERT. 1"=4'	76-155-B



CITY OF RIVERSIDE DOMESTIC SYSTEM <i>Walter Hylan</i> 11-1-77 CHIEF UTILITIES ENGINEER, WATER Date	ALBERT A. WEBB ASSOCIATES CIVIL ENGINEERS RIVERSIDE, CALIFORNIA APPROVED BY: <i>E. A. Webb</i> DATE 6-1-77 R.E. No. 2876	CITY OF RIVERSIDE, CALIFORNIA PUBLIC WORKS DEPARTMENT APPROVED BY: <i>[Signature]</i> PRINCIPAL ENGINEER PARK DEPARTMENT TRAFFIC DIVISION CHIEF PUB. WKS. ENGR. DATE 1-2-77	SEWER IMPROVEMENT PLANS	ACCOUNT No.
			TRACT 7948 & 7925 RED BLUFF ROAD RED ROCK ROAD	DRAWING NUMBER
DESIGNED BY P.E.D. DRAWN BY R.O.K. CHECKED BY:			SCALE: HORIZ. 1"=40' VERT. 1"=4' OFF SITE	5-1153 SHEET 4 OF 4