

GENERAL NOTES

1. Construction shall be in accordance with the standard Specifications for Public Works Construction 1976 Edition, and the City of Riverside Standard Drawings.
2. It shall be the responsibility of the Contractor to clear the Right of way in accordance with the provisions of law as it affects each utility including irrigation lines and appurtenances and at no cost to the City.
3. Pipe shall be bedded per Case 1, standard Drawing No. 452, unless otherwise specified on the plans.
4. Location of wyes and laterals to be determined in the field at the direction of the owner.
5. All stubs and laterals to be constructed in accordance with standard Drawing No. 562 stubs shall be plugged and capped.
6. Manhole frames and covers to be set as noted in profiles by sewer contractor after final paving of streets.
7. Laterals are to be 4" V.C.P. and extended to property line.
8. Prior to construction the sewer contractor is to expose the existing sewer and contact the Engineer for verification of existing location and elevation.
9. Plugs shall be installed and will remain in place, where the new sewer connects with the existing sewer until such time as the new sewer is accepted by the City.

NOTICE TO CONTRACTOR

The existence and location of underground utility pipes or structures shown on these plans are obtained by a search of the available records. To the best of our knowledge there are no existing utilities except as shown on these plans.

The Contractor is required to take due precautionary measures to protect the utility lines shown and any other lines not of record or not shown on these plans.

NOTE:

The private engineer signing these plans is responsible for the accuracy and acceptability of the work hereon. In the event of discrepancies arising during construction, the private engineer shall be responsible for determining an acceptable solution and revising the plans for approval by the City.

BENCH MARK: Elev 1136.542
 C/R B.M. No. G-7-C. 2" nail in curb return S.E.
 Corner Chicago and Alessandro.

* AS BUILT 1-5-82 1888

CITY OF RIVERSIDE DOMESTIC SYSTEM
 APPROVED BY: *[Signature]* 6-16-77
 CHIEF UTILITIES ENGINEER, WATER DATE

ALBERT A. WEBB ASSOCIATES
 CIVIL ENGINEERS
 RIVERSIDE, CALIFORNIA
 APPROVED BY: *[Signature]* DATE 3-4-77
 R.E. No. 2876

MARK	REVISIONS	APPR.	DATE
Δ	Removed Co. added MH #9 ENW	<i>[Signature]</i>	10/10

CITY OF RIVERSIDE, CALIFORNIA
 PUBLIC WORKS DEPARTMENT
 APPROVED BY: *[Signature]* DATE 10-1-77
 PRINCIPAL ENGINEER
 PARK DEPARTMENT
 TRAFFIC DIVISION
 CHIEF PUB. WKS. ENGR.

SEWER PLAN & PROFILE
INDEX
TRACT 5657
 SCALE: 1" = 40' Horiz. 1" = 8' Vert.

ACCOUNT No. INDEXED R.R.
 DRAWING NUMBER
5-1157
 SHEET 1 OF 4
73-285-B

W.O. 73-285 FOR: Sunsoil Ranch 10c. F.B. 1022

DESIGNED BY: BEL DRAWN BY: BEL CHECKED BY:

1320

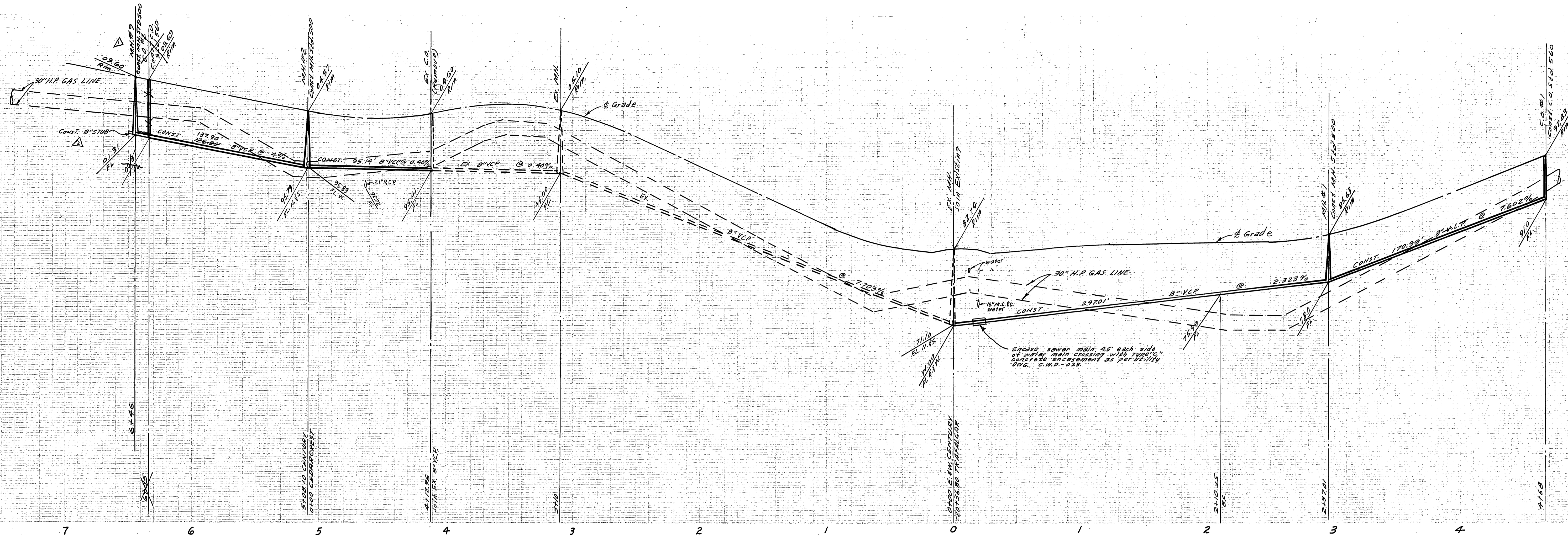
1300

1280

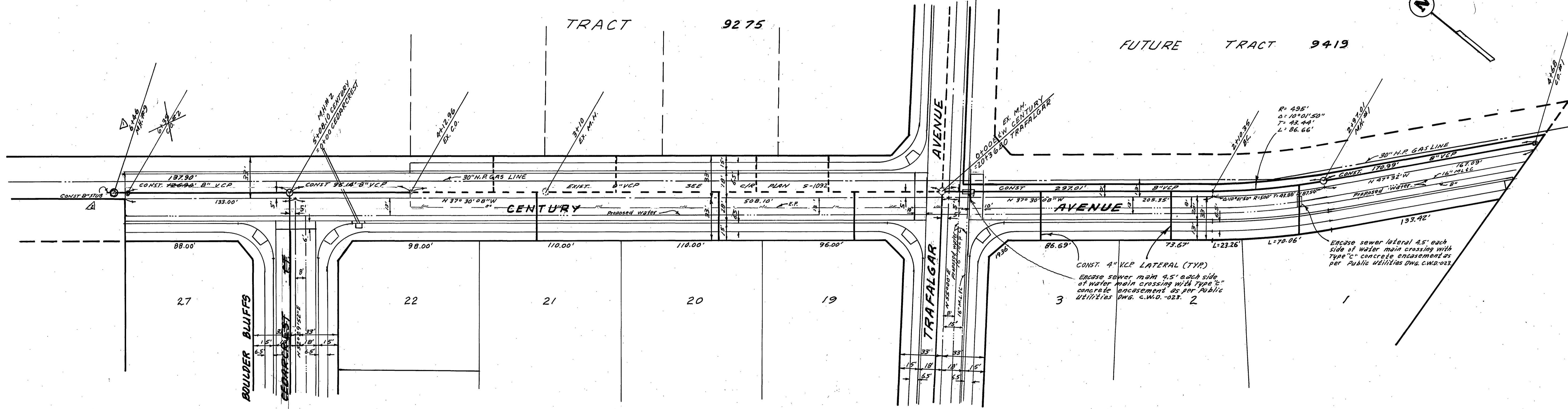
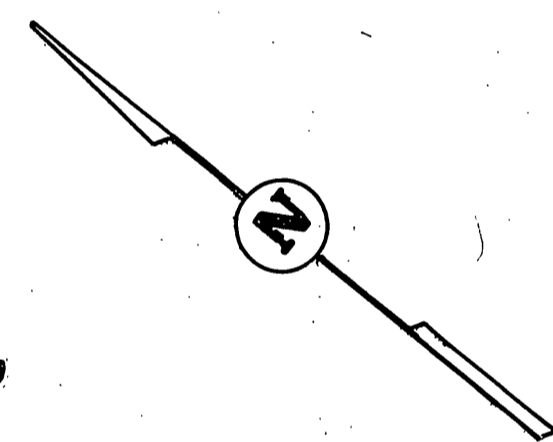
1300

1280

1260



7 6 5 4 3 2 1 0 1 2 3 4 5

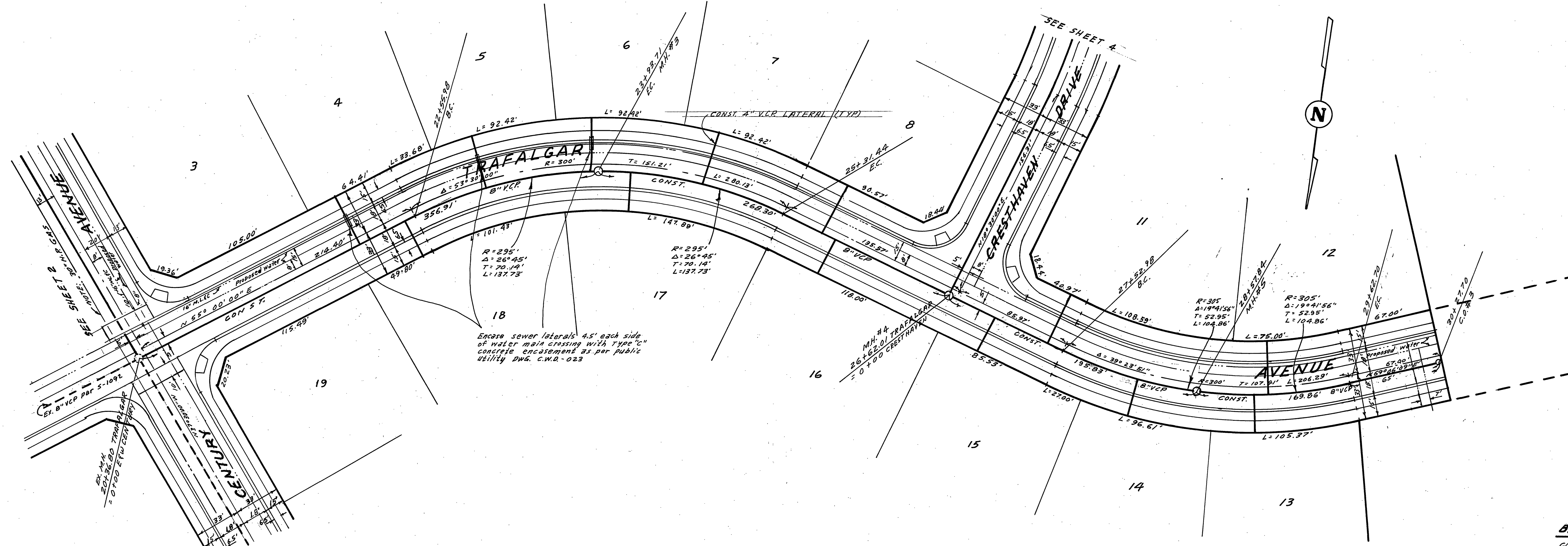
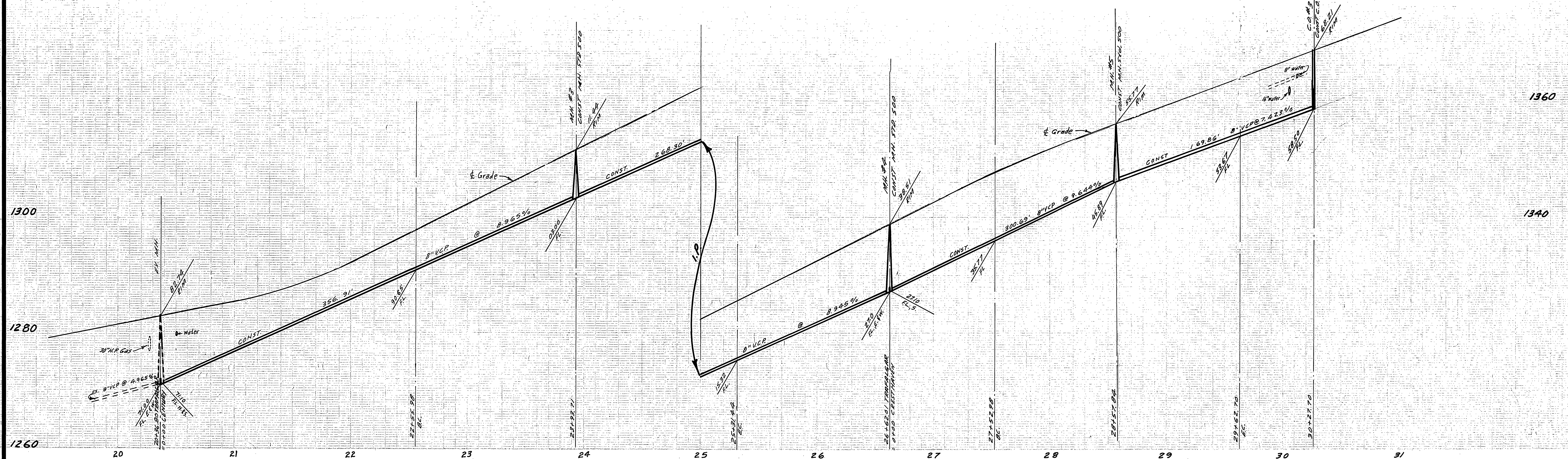


SEE SHEET 4

SEE SHEET 3

BENCH MARK: Elev. 1136.542
 C/R B.M. No G-7-C P.K. nail in curb return st.
 Corner Chicago and Alessandro.
 * AS BUILT 1-5-92 BRET

APPROVED BY <i>K.V. Somers</i> 7-15-77 SOUTHERN CALIF GAS CO. DATE CITY OF RIVERSIDE DOMESTIC SYSTEM APPROVED BY: <i>Wesley Ayler</i> 6-16-77 CHIEF UTILITIES ENGINEER, WATER DATE	ALBERT A. WEBB ASSOCIATES CIVIL ENGINEERS RIVERSIDE, CALIFORNIA APPROVED BY: <i>Paul N. Webb</i> DATE 3-4-77 R.E. No. 9876 W.O. 73-285 FOR: sunset ranch Inc. F.B. 1022	CITY OF RIVERSIDE, CALIFORNIA PUBLIC WORKS DEPARTMENT APPROVED BY: <i>[Signature]</i> DATE 10-5-77 PRINCIPAL ENGINEER PARK DEPARTMENT TRAFFIC DIVISION CHIEF PUB. WKS. ENGR.	SEWER PLAN & PROFILE CENTURY AVENUE TRACT NO. 5657		ACCOUNT NO. DRAWING NUMBER 5-1157
			SCALE: 1" = 40' Horiz., 1" = 8' Vert.		SHEET 2 OF 4 73-285-B



BENCH MARK: Elev. 1136.542
 C/P B.M. No G-7-C P.K. nail in curb return sl.
 Corner Chicago and Alessandro.

* AS BUILT 1-5-02 BDET

CITY OF RIVERSIDE DOMESTIC SYSTEM
 APPROVED BY: *Walter Styler* 6-16-77
 CHIEF UTILITIES ENGINEER, WATER

ALBERT A. WEBB ASSOCIATES
 CIVIL ENGINEERS
 RIVERSIDE, CALIFORNIA
 APPROVED BY: *Earl N. Webb* DATE 3-4-77
 R.E. No. 9876

MARK	REVISIONS	APPR.	DATE

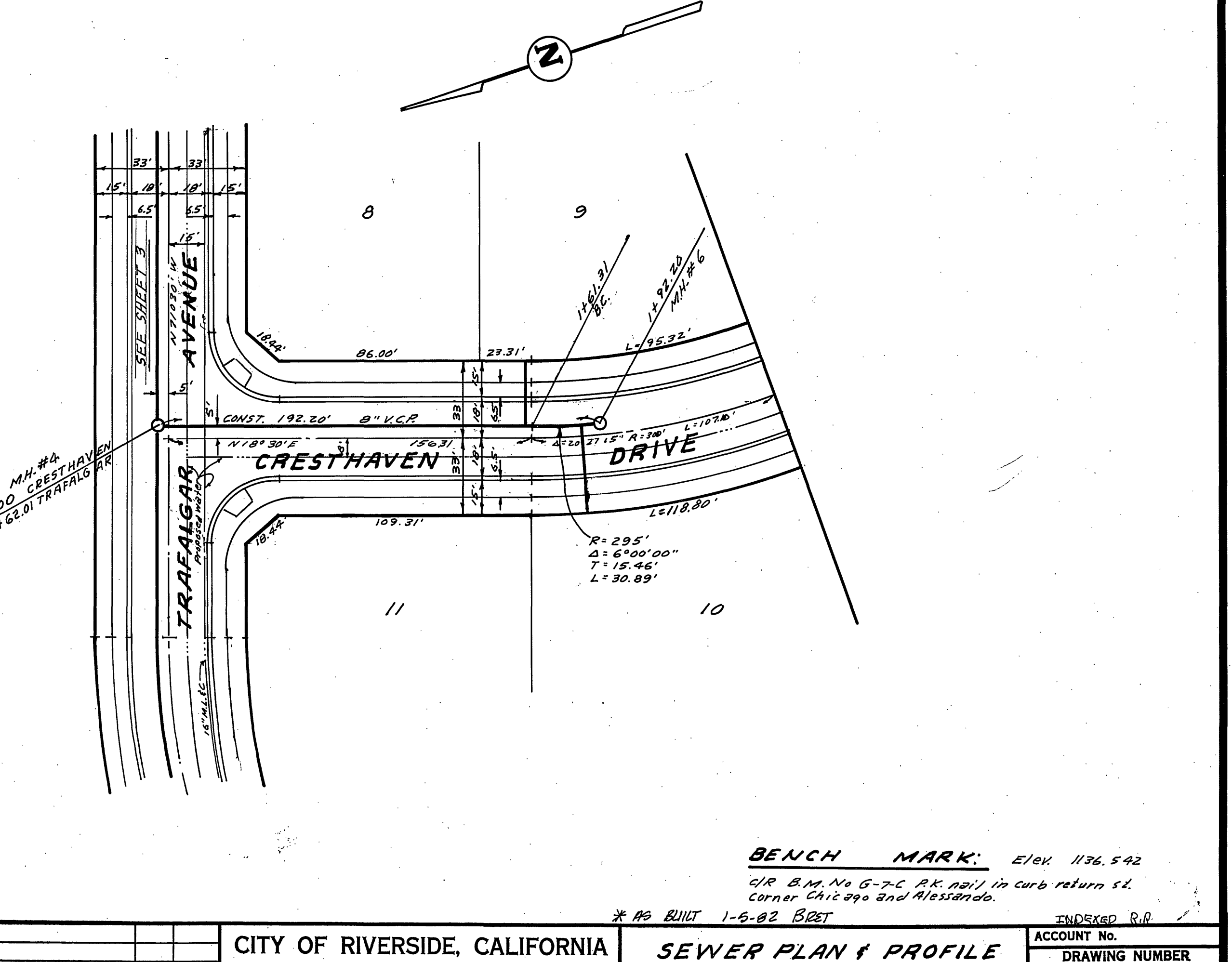
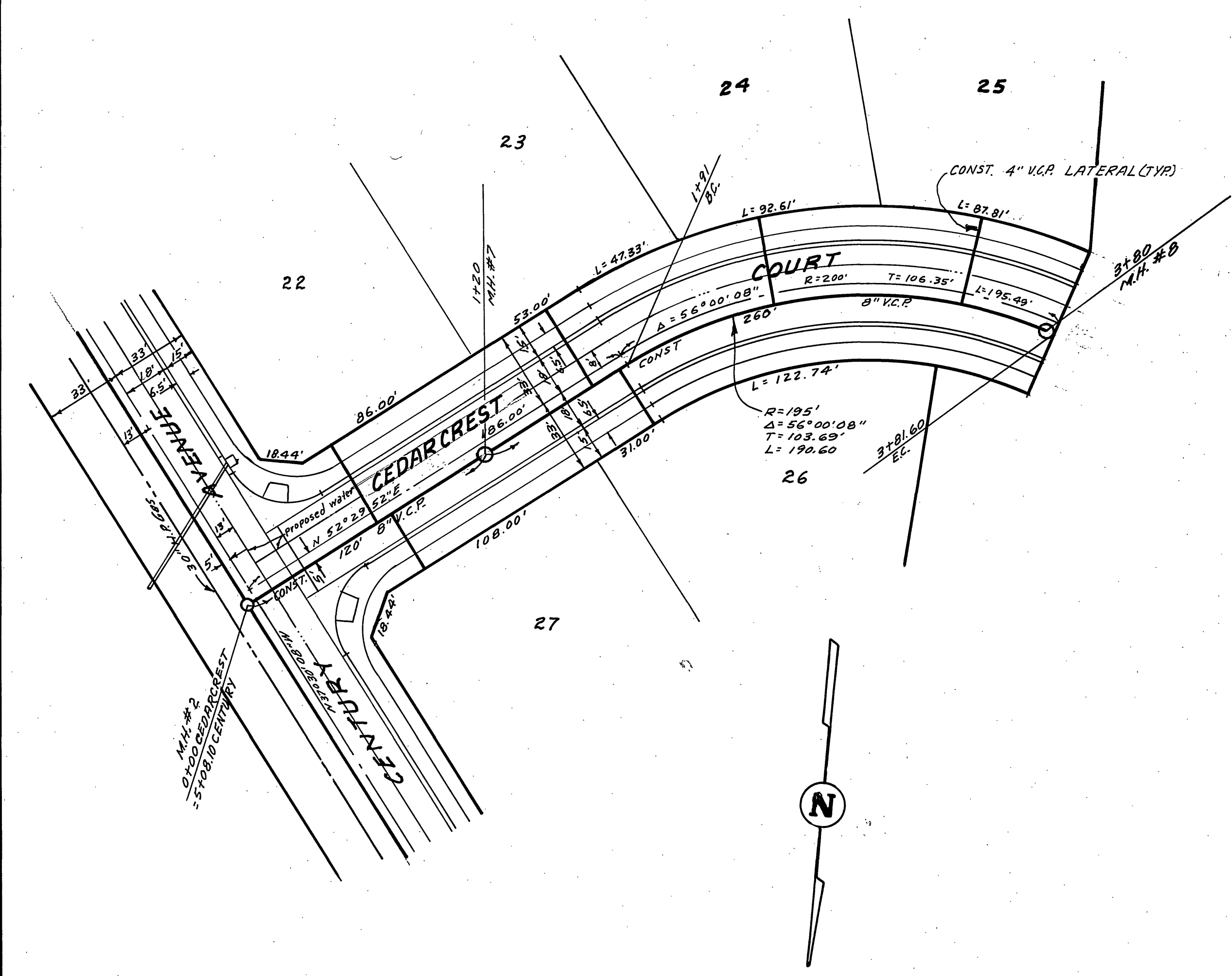
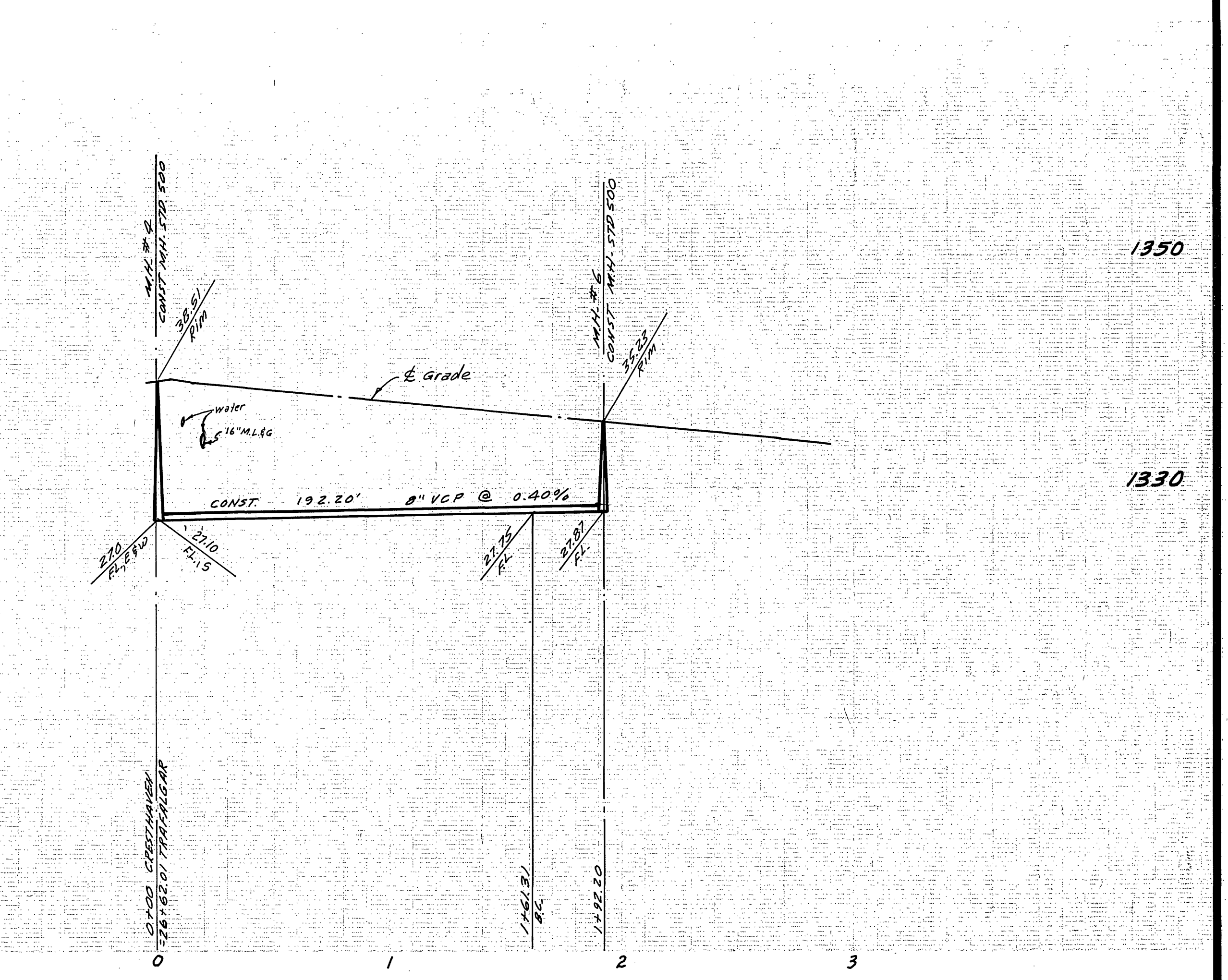
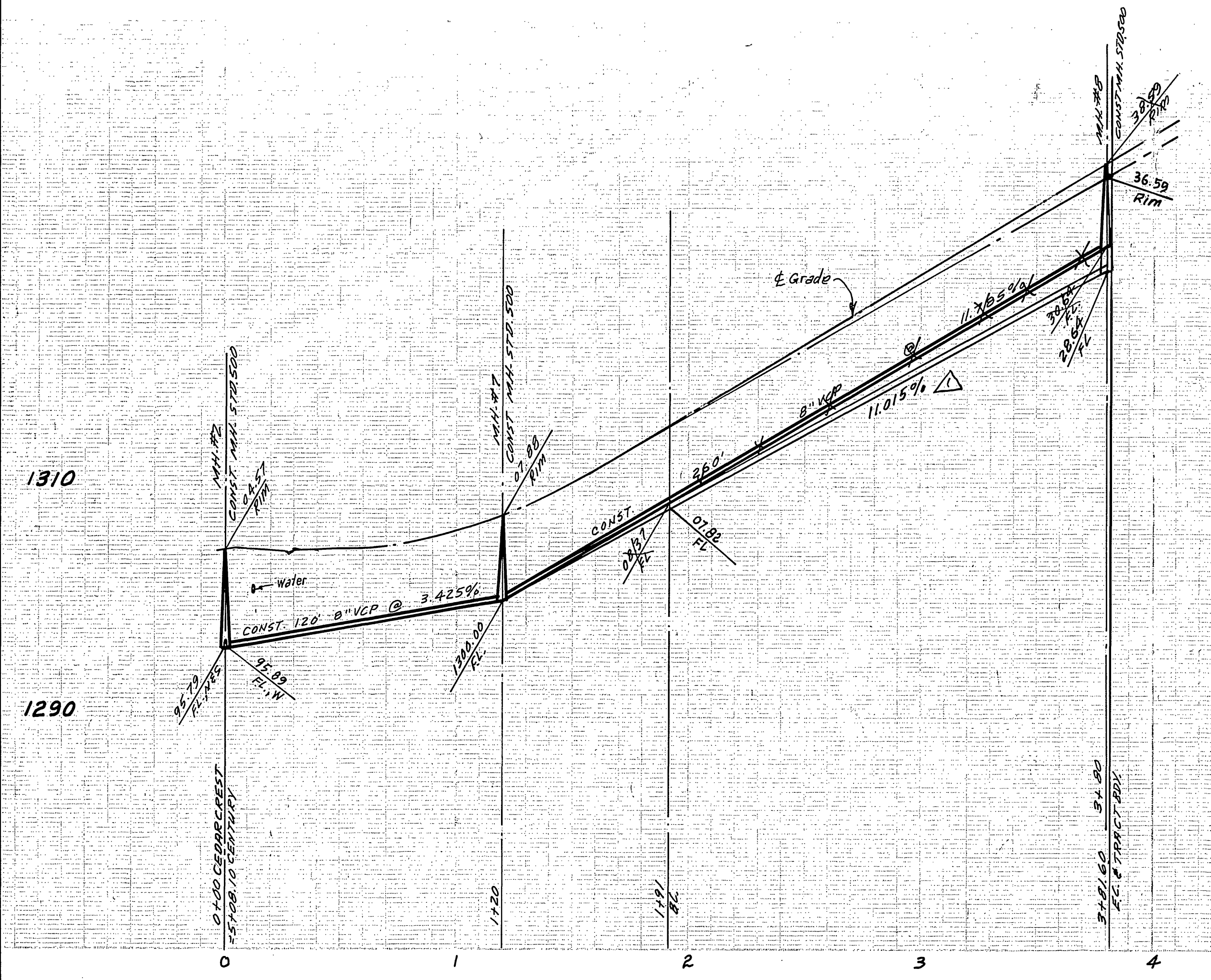
CITY OF RIVERSIDE, CALIFORNIA
PUBLIC WORKS DEPARTMENT
 APPROVED BY: *John J. [Signature]* DATE 10-5-77
 PRINCIPAL ENGINEER
 PARK DEPARTMENT
 TRAFFIC DIVISION
 CHIEF PUB. WKS. ENGR.

SEWER PLAN & PROFILE
TRAFALGAR AVENUE
TRACT NO. 5657
 ACCOUNT No. 5-1157
 SHEET 3 OF 4
 SCALE: 1" = 40' Horiz., 1" = 8' Vert.
 73-285-B

W.73-285 FOR Sunval Ranch Inc. F.B.1022

DESIGNED BY: BEL DRAWN BY: BEL CHECKED BY:

DATE 10-5-77



CITY OF RIVERSIDE DOMESTIC SYSTEM
 APPROVED BY: *Wally Hoffman* 6-16-77
 CHIEF UTILITIES ENGINEER, WATER

ALBERT A. WEBB ASSOCIATES
 CIVIL ENGINEERS
 RIVERSIDE, CALIFORNIA
 APPROVED BY: *Don N. Wall* DATE 3-4-77
 R.E. No. 2876

DESIGNED BY: BEL DRAWN BY: BEL CHECKED BY:

CITY OF RIVERSIDE, CALIFORNIA
 PUBLIC WORKS DEPARTMENT
 APPROVED BY: *Wally Hoffman* DATE 10-15-77
 PRINCIPAL ENGINEER
 PARK DEPARTMENT
 TRAFFIC DIVISION
 CHIEF PUB. WKS. ENGR.

SEWER PLAN & PROFILE
 CRESTHAVEN DRIVE
 CEDARCREST COURT
 TRACT NO. 5657
 ACCOUNT No. 5-1157
 SHEET 4 OF 4
 73-285-B
 SCALE: 1" = 40' Horiz, 1" = 8' Vert.

BENCH MARK: E/OK 1136.542
 O/R B.M. No G-7-C P.K. 101' in curb return s.d.
 corner Chic 290 and Alessandro.
 * 19 BUILT 1-6-02 BRET