

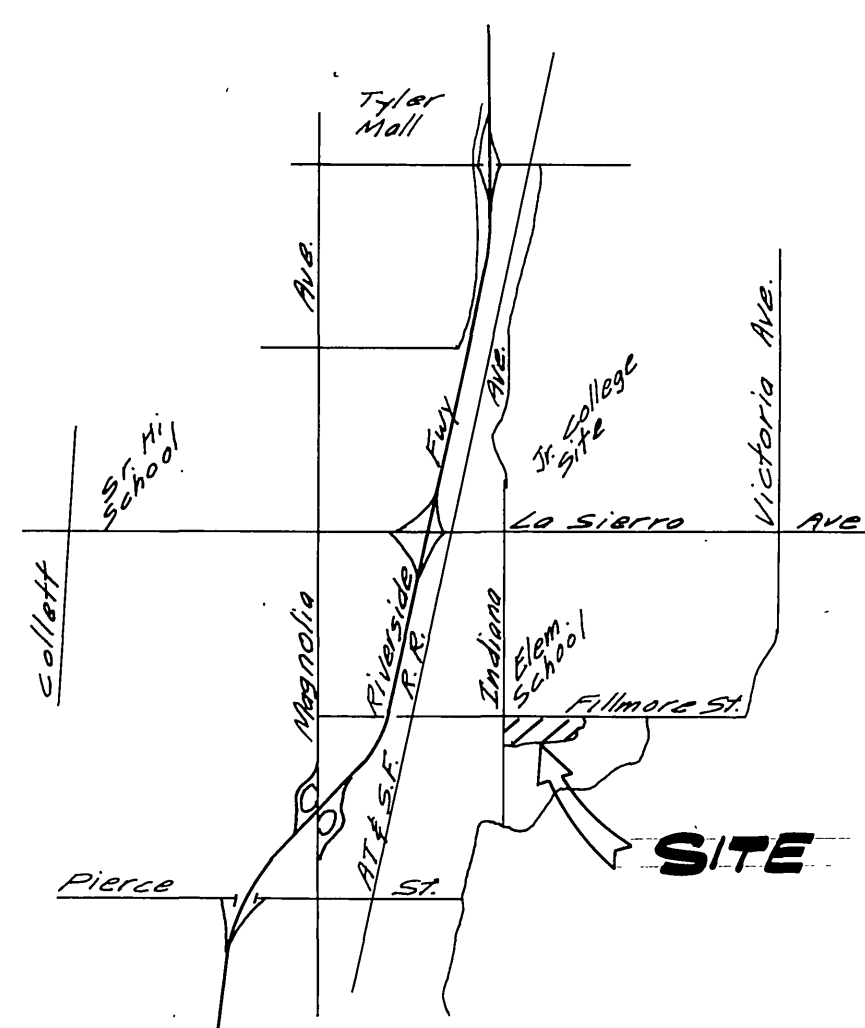
- GENERAL NOTES:**
1. THE PRIVATE ENGINEER SIGNING THESE PLANS IS RESPONSIBLE FOR THE ACCURACY AND ACCEPTABILITY OF THE WORK HEREON. IN THE EVENT OF DISCREPANCIES ARISING DURING CONSTRUCTION, THE PRIVATE ENGINEER SHALL BE RESPONSIBLE FOR DETERMINING AN ACCEPTABLE SOLUTION AND REVISING THE PLANS FOR APPROVAL BY THE CITY.
  2. CONSTRUCTION SHALL BE IN ACCORDANCE WITH THE STANDARD SPECIFICATIONS FOR PUBLIC WORKS CONSTRUCTION, 1979 EDITION AND THE CITY OF RIVERSIDE STANDARD DRAWINGS.
  3. IT SHALL BE THE RESPONSIBILITY OF THE CONTRACTOR TO CLEAR THE RIGHT OF WAY IN ACCORDANCE WITH THE PROVISIONS OF LAW AS IT AFFECTS EACH UTILITY INCLUDING IRRIGATION LINES AND APPURTENANCES AND AT NO COST TO THE CITY.
  4. PIPE SHALL BE BEDDED PER CASE I, STANDARD DRAWING NO. 452, UNLESS OTHERWISE SPECIFIED ON THE PLANS.
  5. LOCATION OF WYES AND LATERALS TO BE DETERMINED IN THE FIELD AT THE DIRECTION OF THE OWNER.
  6. ALL STUBS AND LATERALS TO BE CONSTRUCTED IN ACCORDANCE WITH STANDARD DRAWING NO. 562, STUBS SHALL BE PLUGGED AND CAPPED.
  7. MANHOLE FRAMES AND COVERS TO BE SET AS NOTED IN PROFILES BY SEWER CONTRACTOR AFTER FINAL PAVING OF STREETS.
  8. LATERALS ARE TO BE 4" VCP EXTENDED TO PROPERTY LINE.
  9. PRIOR TO CONSTRUCTION OF SEWER, CONTRACTOR IS TO EXPOSE THE EXISTING SEWER AND CONTACT THE ENGINEER FOR VERIFICATION OF EXISTING LOCATION AND ELEVATION.
  10. PLUGS SHALL BE INSTALLED AND WILL REMAIN IN PLACE WHERE THE NEW SEWER CONNECTS WITH THE EXISTING SEWER UNTIL SUCH TIME AS THE NEW SEWER IS ACCEPTED BY THE CITY.

**NOTICE TO CONTRACTOR:**

THE EXISTENCE AND LOCATION OF UNDERGROUND UTILITY PIPES OR STRUCTURES SHOWN ON THESE PLANS ARE OBTAINED BY A SEARCH OF THE AVAILABLE RECORDS TO THE BEST OF OUR KNOWLEDGE THERE ARE NO EXISTING UTILITIES EXCEPT AS SHOWN ON THESE PLANS.

THE CONTRACTOR IS REQUIRED TO TAKE DUE PRECAUTIONARY MEASURES TO PROTECT THE UTILITY LINES SHOWN AND ANY OTHER LINES NOT OF RECORD OR NOT SHOWN ON THESE PLANS.

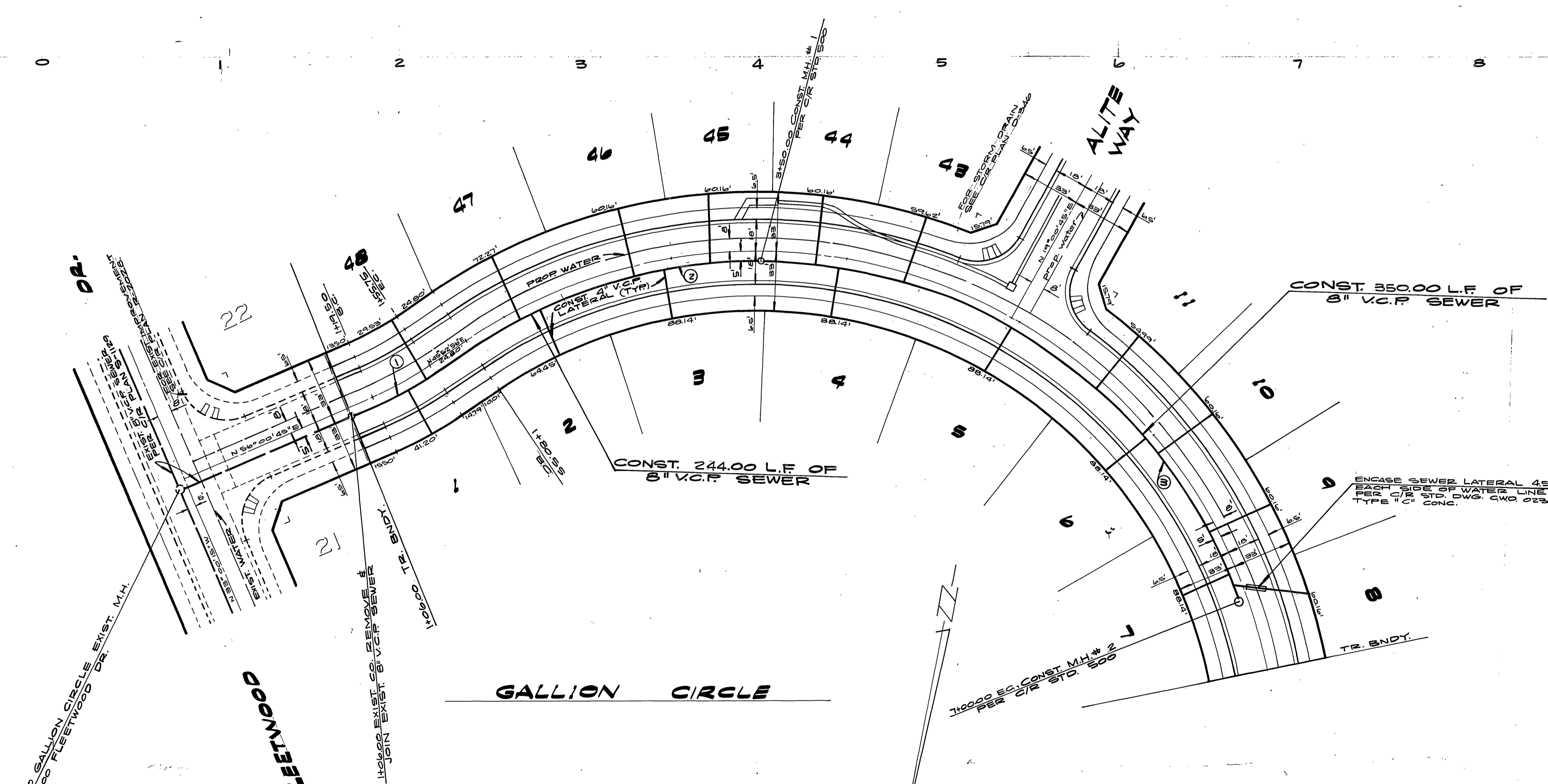
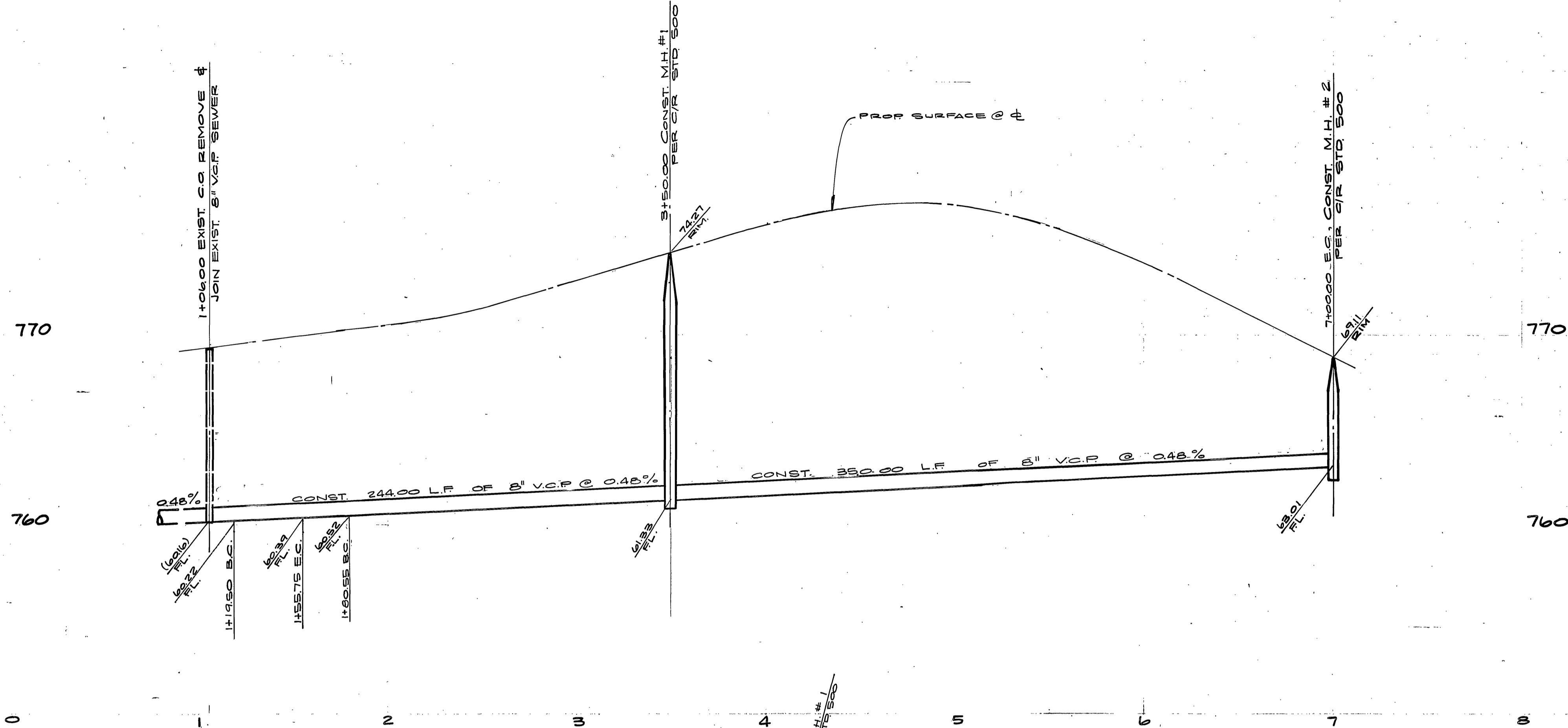
**INDEX MAP**  
NO SCALE



**LOCATION MAP**  
NO SCALE

**BENCH MARK:**  
E 20'-PK. NAIL IN CENTER OF S.E. CURB RETURN AT INDIANA AVENUE AND FILLMORE STREET. ELEV. 788.768

ALBERT A. WEBB ASSOCIATES CIVIL ENGINEERS RIVERSIDE, CALIFORNIA		CITY OF RIVERSIDE, CALIFORNIA PUBLIC WORKS DEPARTMENT		ACCOUNT No. DRAWING NUMBER <b>5-1158</b>
APPROVED BY: <i>[Signature]</i> DATE: 9/17 R.E. No. 27109		APPROVED BY: <i>[Signature]</i> DIRECTOR OF PUBLIC WORKS DATE: 1/13/78		SHEET <b>1</b> OF <b>4</b>
CITY OF RIVERSIDE DOMESTIC SYSTEM BY: <i>[Signature]</i> 9-13-77 CHIEF UTILITIES ENGINEER, WATER		DESIGNED BY: <i>[Signature]</i> DRAWN BY: <i>[Signature]</i> CHECKED BY:		SCALE: AS NOTED 76-247 B



CURVE DATA				
NO.	Δ	R	L	T
1	10° 07' 49"	205.00	36.25	18.17'
2	34° 23' 57"	285.00	16.945	27.31'
B	70° 21' 48"	285.00	35.000	20.291'

BENCH MARK:  
 E 20'-PK. NAIL IN CENTER OF S.E. CURB RETURN AT  
 INDIANA AVENUE AND FILLMORE STREET. ELEV. 738.968

NOTE:  
 SEE SHEET #1 FOR GENERAL NOTES

CITY OF RIVERSIDE  
 DOMESTIC SYSTEM  
 BY *W. H. Hyle* 9-13-77  
 CHIEF UTILITIES ENGINEER, WATER DATE

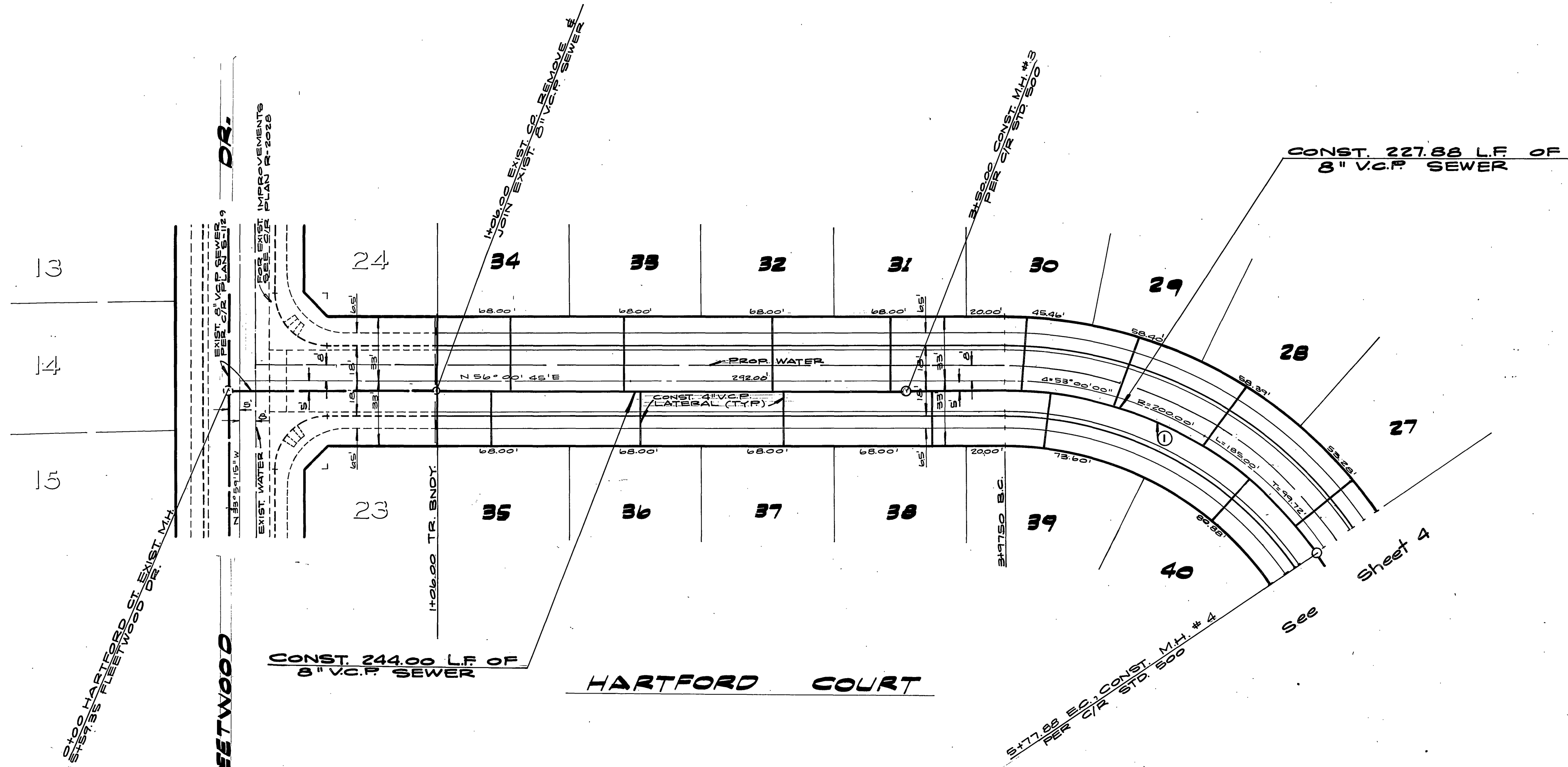
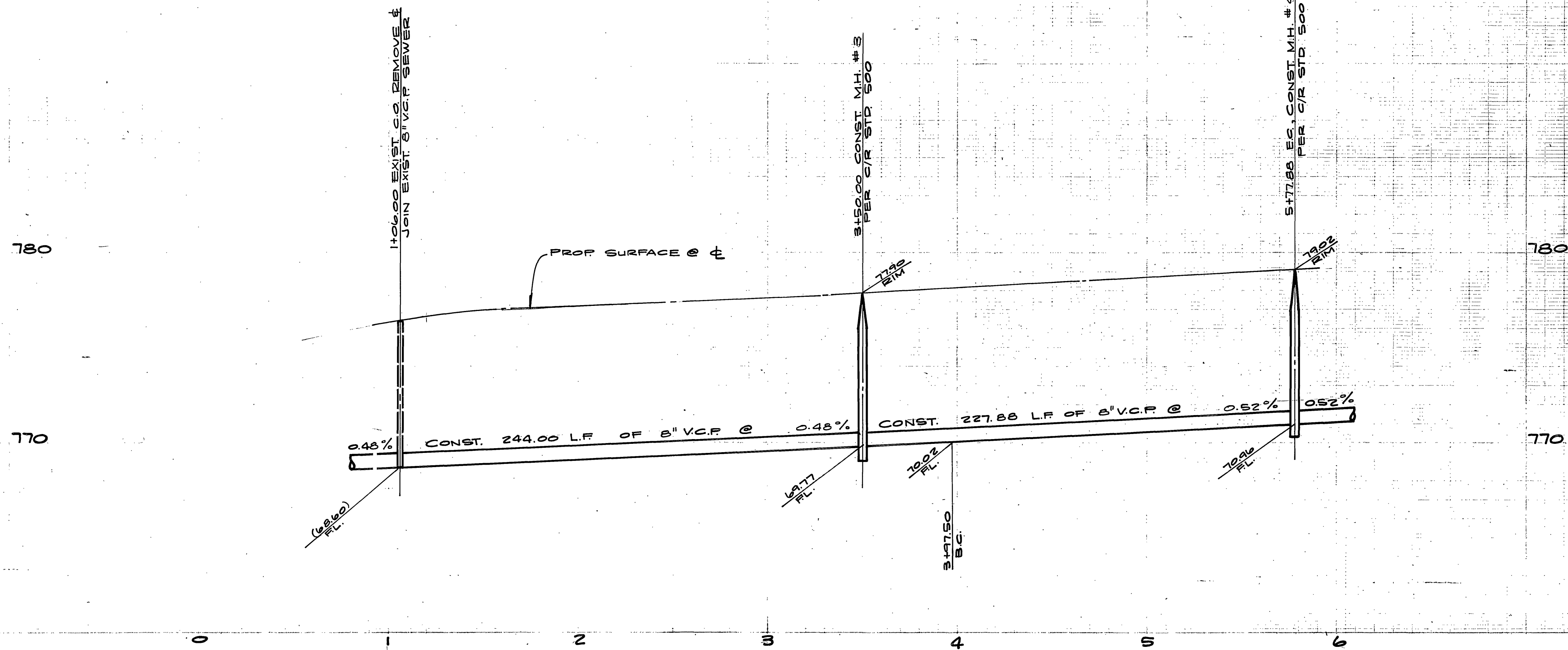
ALBERT A. WEBB ASSOCIATES  
 CIVIL ENGINEERS  
 RIVERSIDE, CALIFORNIA  
 APPROVED BY *[Signature]* DATE 9/13/77  
 R.E. No. 27103  
 W. 076-247 FOR CITATION BUILDERS P.B. 1039

CITY OF RIVERSIDE, CALIFORNIA  
 PUBLIC WORKS DEPARTMENT  
 APPROVED BY *[Signature]* DATE 9/13/77  
 PRINCIPAL ENGINEER  
 PARK DEPARTMENT  
 TRAFFIC DIVISION  
 CHIEF PUB. WKS. ENGR. DATE 9/13/77

SEWER PLAN & PROFILE  
 TRACT 7503-3  
 GALLION CIRCLE  
 SCALE: HORIZ. 1"=40', VERT. 1"=4'

ACCOUNT NO. 100  
 DRAWING NUMBER  
 9-1198  
 SHEET 2 OF 4  
 INDEXED & D.  
 76-247 B





CURVE DATA			
No.	Δ	R	L
1	53°00'00"	192.00	180.38
			97.22'

**BENCH MARK:**  
 E 20' P.K. NAIL IN CENTER OF SE CURB RETURN AT INDIANA AVENUE AND FILLMORE STREET. ELEV 738.968

**NOTE:**  
 SEE SHEET #1 FOR GENERAL NOTES

ALBERT A. WEBB ASSOCIATES  
 CIVIL ENGINEERS  
 RIVERSIDE, CALIFORNIA  
 APPROVED BY: *[Signature]* DATE: *[Date]*  
 R.E. No. 21105

CITY OF RIVERSIDE  
 DOMESTIC SYSTEM  
 BY: *[Signature]* DATE: 7-13-77  
 CHIEF UTILITIES ENGINEER, WATER

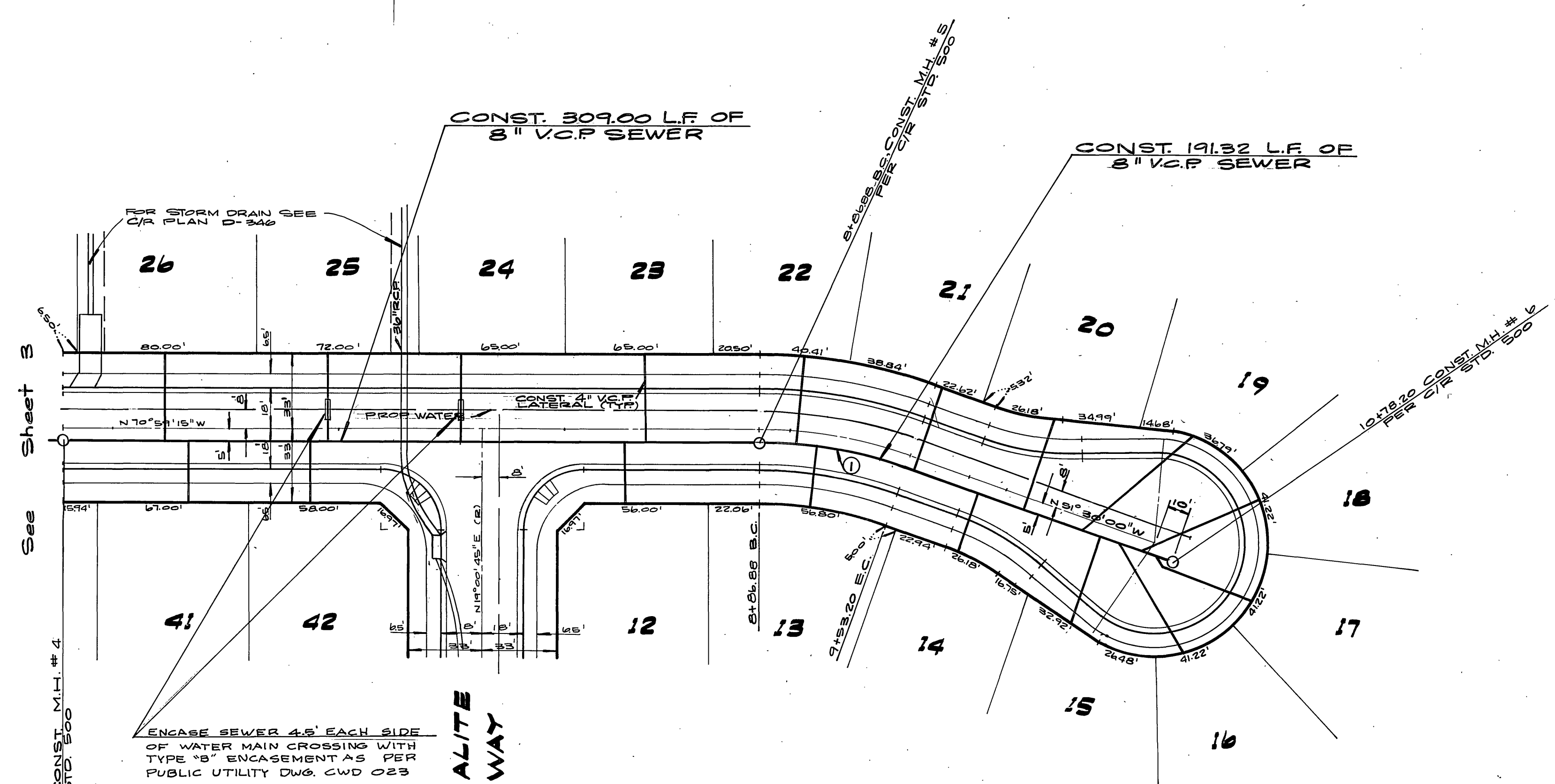
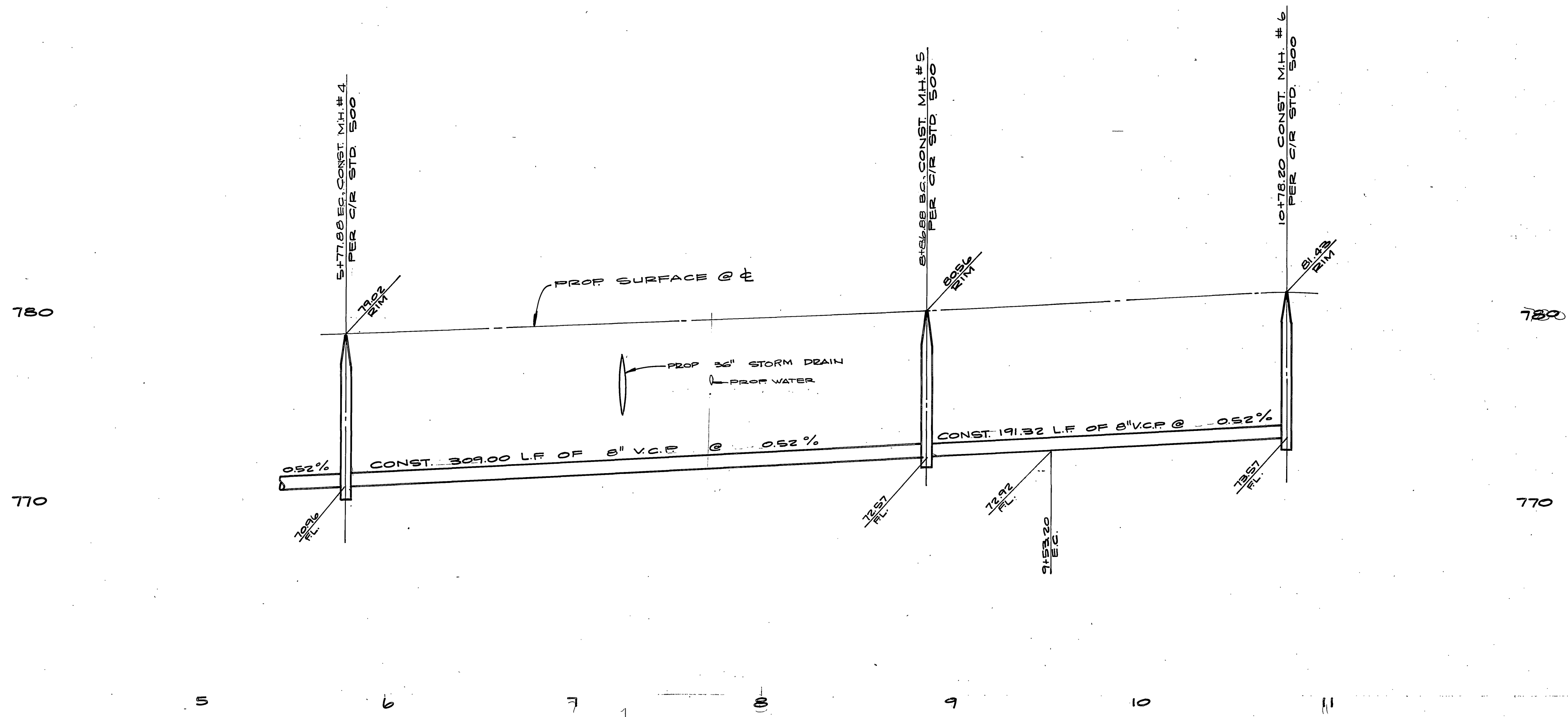
CITY OF RIVERSIDE, CALIFORNIA  
 PUBLIC WORKS DEPARTMENT  
 APPROVED BY: *[Signature]* DATE: *[Date]*  
 PRINCIPAL ENGINEER  
 PARK DEPARTMENT  
 TRAFFIC DIVISION  
 CHIEF PUB. WKS. ENGR.

**SEWER PLAN & PROFILE**  
 TRACT 7503-3  
 HARTFORD CT.  
 SCALE: HORIZ. 1"=40' VERT. 1"=4'

ACCOUNT No. \_\_\_\_\_  
 DRAWING NUMBER  
 9-115B  
 SHEET 3 OF 4  
 INDEXED R/R  
 76-247 B

MARK \_\_\_\_\_ REVISIONS \_\_\_\_\_ APPR. DATE \_\_\_\_\_  
 DESIGNED BY: *[Signature]* DRAWN BY: *[Signature]* CHECKED BY: \_\_\_\_\_

W.O. 76-247 FOR: CITATION BUILDERS F.B. 1039



CURVE DATA			
No.	Δ	R	T
1	19° 29' 15"	195.00'	33.49'

**BENCH MARK:**  
 8" 20' PK. NAIL IN CENTER OF SE CURB RETURN AT INDIANA AVENUE AND FILLMORE STREET. ELEV. 788.108

**HARTFORD COURT**

NOTE:  
 SEE SHEET #1 FOR GENERAL NOTES

CITY OF RIVERSIDE  
 DOMESTIC SYSTEM  
 BY: *Walter J. H. 9-13-77*  
 CHIEF UTILITIES ENGINEER, WATER DATE

ALBERT A. WEBB ASSOCIATES  
 CIVIL ENGINEERS  
 RIVERSIDE, CALIFORNIA  
 APPROVED BY: *[Signature]* DATE: *9/13/77*  
 R.E. No. 27109

MARK	REVISIONS	APPR.	DATE

CITY OF RIVERSIDE, CALIFORNIA  
 PUBLIC WORKS DEPARTMENT  
 APPROVED BY: *[Signature]* DATE: *11/13/78*  
 PRINCIPAL ENGINEER  
 PARK DEPARTMENT  
 TRAFFIC DIVISION  
 CHIEF PUB. WKS. ENGR.

**SEWER PLAN & PROFILE**  
**TRACT 7503-3**  
**HARTFORD CT.**

ACCOUNT No.  
 DRAWING NUMBER  
*9-1158*  
 SHEET **4** OF **4**  
 76-247B

SCALE: HORIZ. 1"=40', VERT. 1"=4'