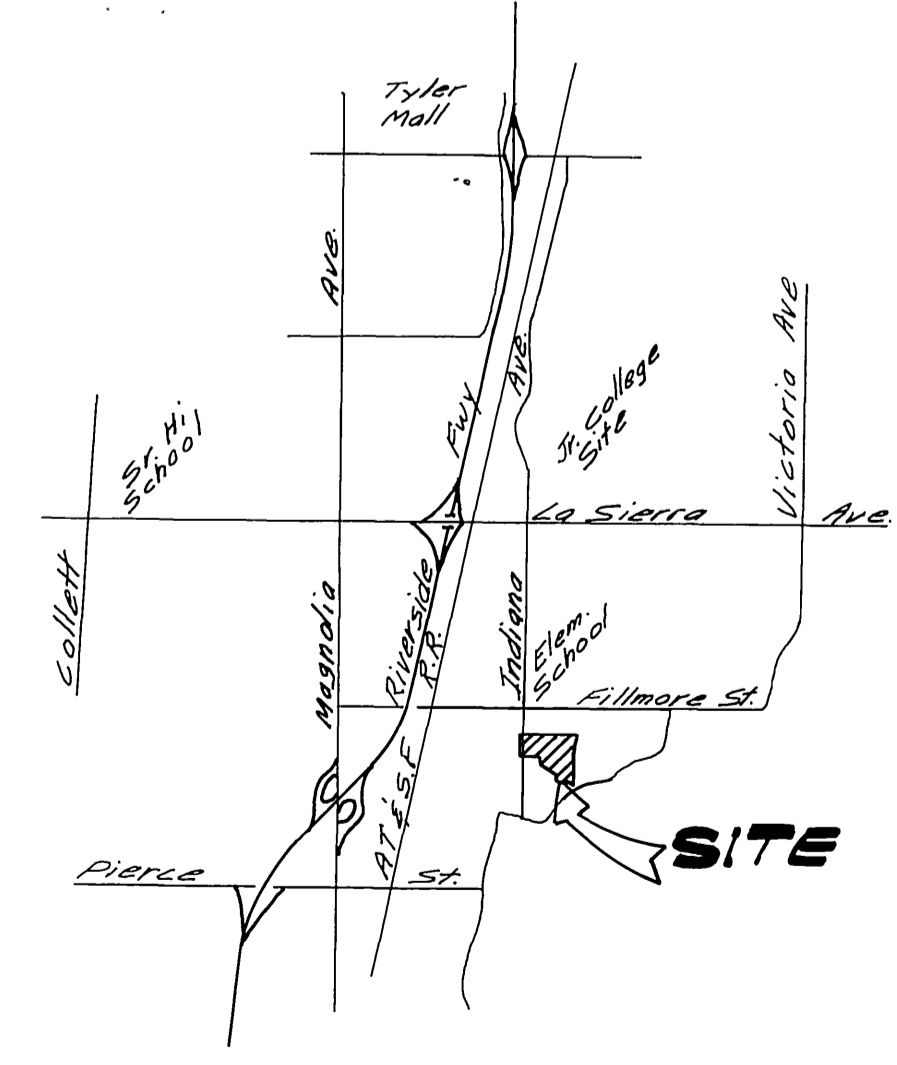


INDEX MAP
1"=100'



LOCATION MAP
NO SCALE

GENERAL NOTES :

1. THE PRIVATE ENGINEER SIGNING THESE PLANS IS RESPONSIBLE FOR THE ACCURACY AND ACCEPTABILITY OF THE WORK HEREON. IN THE EVENT OF DISCREPANCIES ARISING DURING CONSTRUCTION, THE PRIVATE ENGINEER SHALL BE RESPONSIBLE FOR DETERMINING AN ACCEPTABLE SOLUTION AND REVISING THE PLANS FOR APPROVAL BY THE CITY.
2. CONSTRUCTION SHALL BE IN ACCORDANCE WITH THE STANDARD SPECIFICATIONS FOR PUBLIC WORKS CONSTRUCTION 1976 EDITION AND THE CITY OF RIVERSIDE STANDARD DRAWINGS.
3. IT SHALL BE THE RESPONSIBILITY OF THE CONTRACTOR TO CLEAR THE RIGHT OF WAY IN ACCORDANCE WITH THE PROVISIONS OF LAW AS IT AFFECTS EACH UTILITY INCLUDING IRRIGATION LINES AND APPURTENANCES AND AT NO COST TO THE CITY.
4. PIPE SHALL BE BEDDED PER CASE I, STANDARD DRAWING No. 452, UNLESS OTHERWISE SPECIFIED ON THE PLANS.
5. LOCATION OF WYES AND LATERALS TO BE DETERMINED IN THE FIELD AT THE DIRECTION OF THE OWNER.
6. ALL STUBS AND LATERALS TO BE CONSTRUCTED IN ACCORDANCE WITH STANDARD DRAWING No. 562, STUBS SHALL BE PLUGGED AND CAPPED.
7. MANHOLE FRAMES AND COVERS TO BE SET AS NOTED IN PROFILES BY SEWER CONTRACTOR AFTER FINAL PAVING OF STREETS.
8. LATERALS ARE TO BE 4" V.C.P. EXTENDED TO PROPERTY LINE.
9. PRIOR TO CONSTRUCTION OF SEWER, CONTRACTOR IS TO EXPOSE THE EXISTING SEWER AND CONTACT THE ENGINEER FOR VERIFICATION OF EXISTING LOCATION AND ELEVATION.
10. PLUGS SHALL BE INSTALLED AND WILL REMAIN IN PLACE WHERE THE NEW SEWER CONNECTS WITH THE EXISTING SEWER UNTIL SUCH TIME AS THE NEW SEWER IS ACCEPTED BY THE CITY.

NOTICE TO CONTRACTOR :

THE EXISTENCE AND LOCATION OF UNDERGROUND UTILITY PIPES OR STRUCTURES SHOWN ON THESE PLANS ARE OBTAINED BY A SEARCH OF THE AVAILABLE RECORDS. TO THE BEST OF OUR KNOWLEDGE THERE ARE NO EXISTING UTILITIES EXCEPT AS SHOWN ON THESE PLANS.

THE CONTRACTOR IS REQUIRED TO TAKE DUE PRECAUTIONARY MEASURES TO PROTECT THE UTILITY LINES SHOWN AND ANY OTHER LINES NOT OF RECORD OR NOT SHOWN ON THESE PLANS.

BENCH MARK :
E 20'-PK. NAIL IN CENTER OF S.E. CURB RETURN AT INDIANA AVENUE AND FILLMORE STREET. ELEV. 735.763.

CITY OF RIVERSIDE
DOMESTIC SYSTEM
BY: *Wally J. J...* 9-18-77
CHIEF UTILITIES ENGINEER, WATER DATE

ALBERT A. WEBB ASSOCIATES
CIVIL ENGINEERS
RIVERSIDE, CALIFORNIA
APPROVED BY: *[Signature]* DATE 9-27-77
R.E. No. 27105

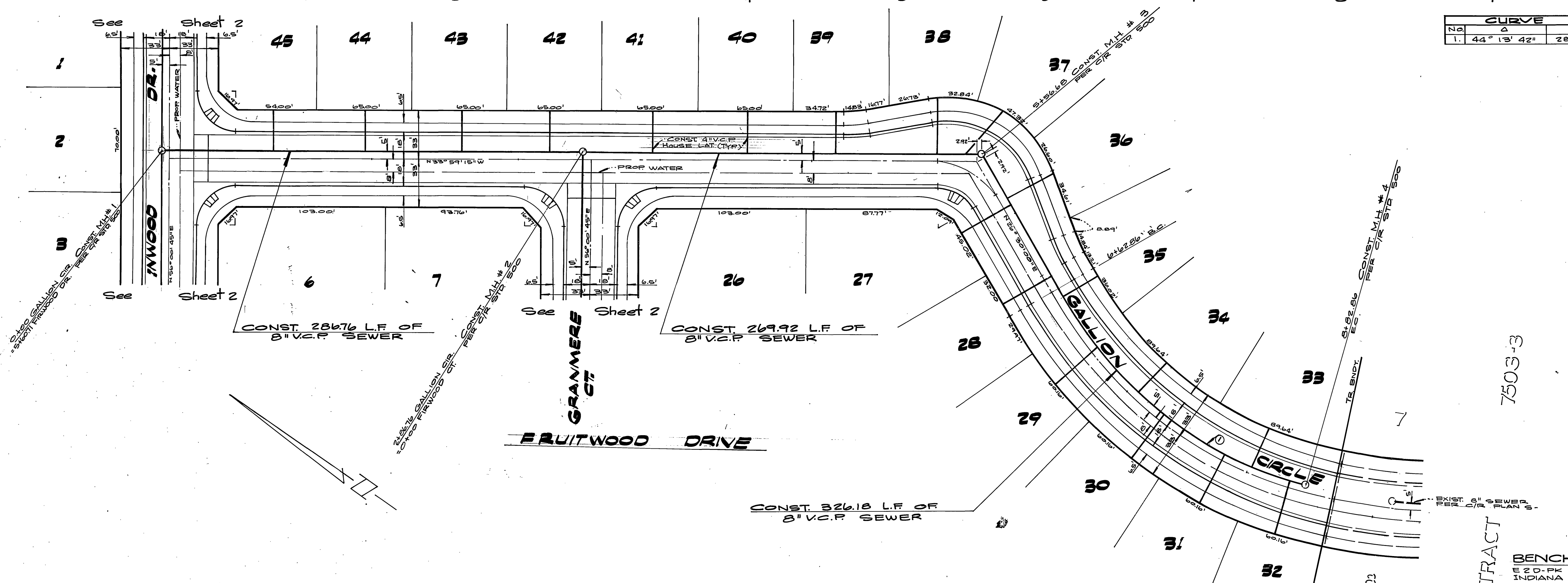
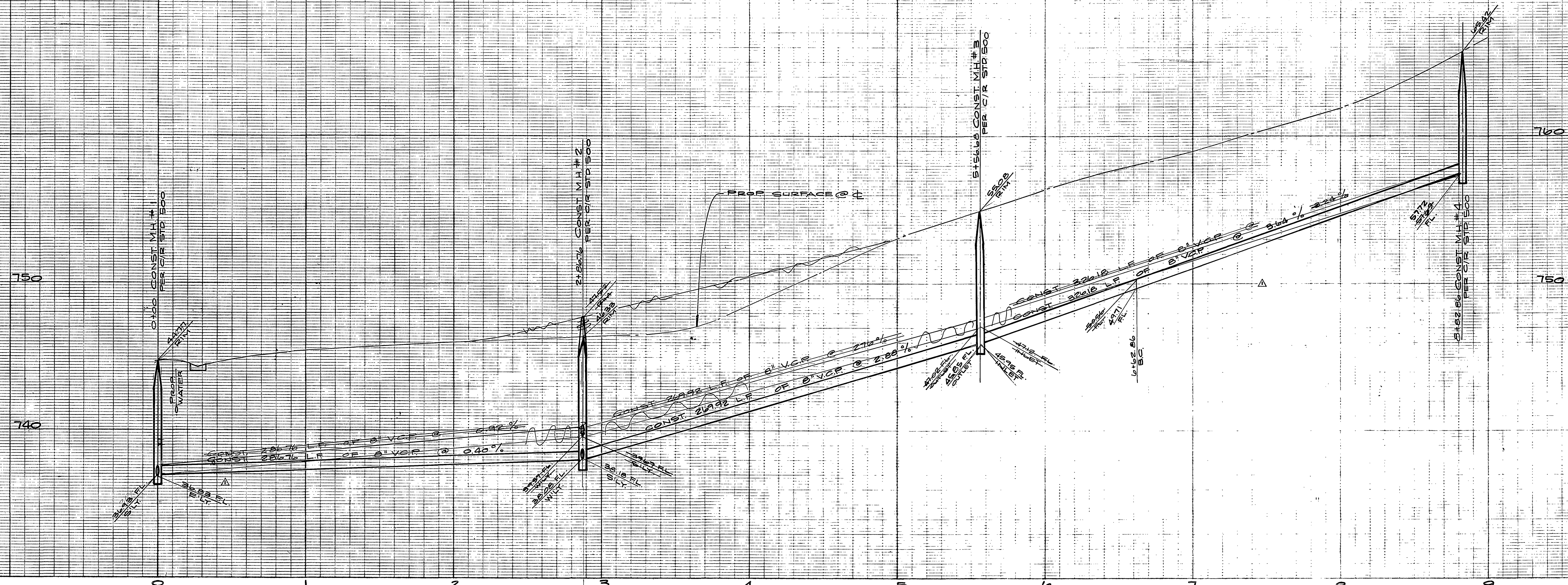
MARK	REVISIONS	APPR. DATE

CITY OF RIVERSIDE, CALIFORNIA
PUBLIC WORKS DEPARTMENT
APPROVED BY: *[Signature]* DATE 9/27/78
PRINCIPAL ENGINEER
PARK DEPARTMENT
TRAFFIC DIVISION
CHIEF PUB. WKS. ENGR. *[Signature]* DATE 9/27/78

SEWER PLAN & PROFILE
TRACT 7503-4
INDEX

ACCOUNT No.
DRAWING NUMBER
S-1161
SHEET 1 OF 3
76-248-B

SCALE: AS NOTED



CURVE DATA				
No.	Δ	R	L	T
1.	44° 13' 42"	285.00'	222.00'	115.81'

NOTE:
SEE SHEET #1 FOR GENERAL NOTES

ALBERT A. WEBB ASSOCIATES CIVIL ENGINEERS RIVERSIDE, CALIFORNIA APPROVED BY: <i>[Signature]</i> DATE: 9-7-77 R.E. No. 27103	CITY OF RIVERSIDE, CALIFORNIA PUBLIC WORKS DEPARTMENT		ACCOUNT No. DRAWING NUMBER S-1161
	APPROVED BY: <i>[Signature]</i> DATE: 3/7/78 CHIEF UTILITIES ENGINEER, WATER	APPROVED BY: <i>[Signature]</i> DATE: 3/7/78 DIRECTOR OF PUBLIC WORKS	SEWER PLAN & PROFILE TRACT 7503-4 GALLION CIRCLE, FRUITWOOD DR. SCALE: HORIZ. 1"=40', VERT. 1"=4' SHEET 3 OF 3 76-248-B