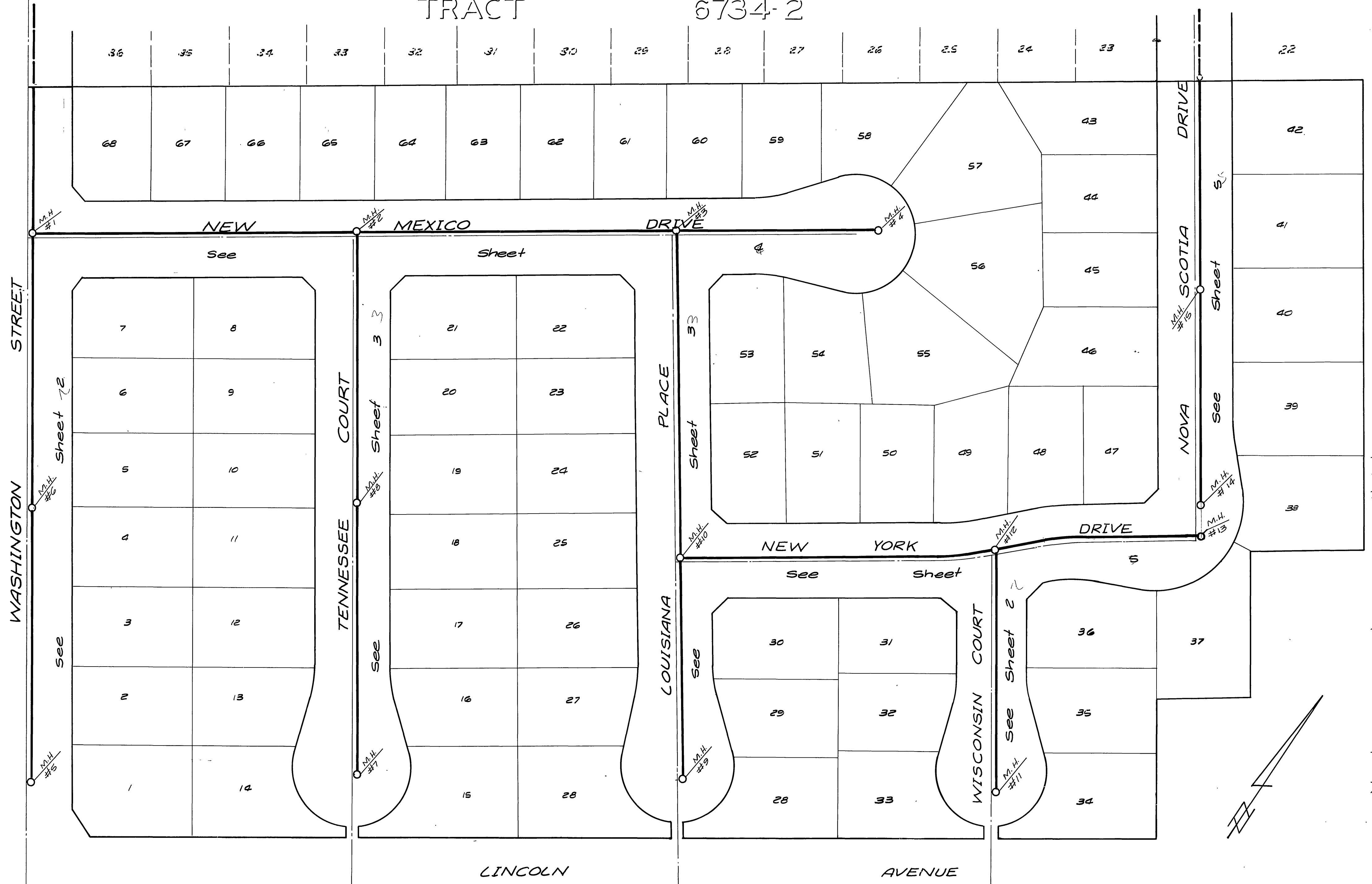


TRACT 6734-2



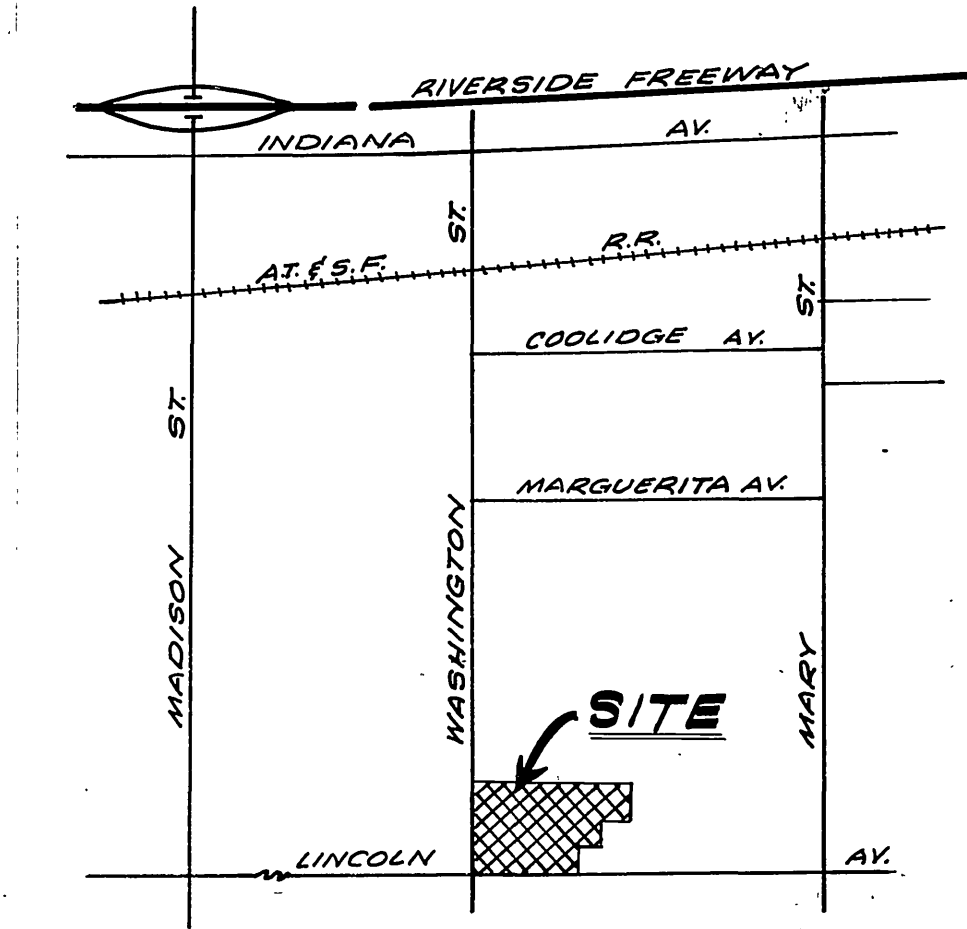
GENERAL NOTES

1. The private engineer signing these plans is responsible for the accuracy and acceptability of the work hereon. In the event of discrepancies arising during construction, the private engineer shall be responsible for determining an acceptable solution and revising the plans for approval by the City.
2. Construction shall be in accordance with Standard Specifications for Public Works Construction, 1976 Edition, and City of Riverside Standard Drawings.
3. Pipe shall be the responsibility of the contractor to clear the right of way in accordance with the provisions of law as it affects each utility including irrigation lines and appurtenances and at no cost to the city.
4. Pipe shall be bedded per Case I, Standard Drawing No. 452, unless otherwise specified on plans.
5. All stubs and laterals to be constructed in accordance with standard drawing 562. Stubs to be plugged and capped.
6. Location of Wyes and Lateral to be determined at the direction of the owner.
7. Manhole frames and covers to be set as noted in profile by sewer Contractor after final paving of streets.
8. Laterals are to be 4" and extended to property line.
9. Encase Sewer 4.5' each side of proposed water main crossing per Public Utilities Drawing C.W.D. 023, Type C.
10. Plugs shall be installed and will remain in place where the new sewer connects with the existing sewer until such time as the new sewer is accepted by the City.

NOTICE TO CONTRACTOR

The existence and location of underground utility pipes or structures shown on these plans are obtained by a search of available records. To the best of our knowledge there are no existing utilities except as shown on these plans.

The contractor is required to take due precautionary measures to protect the utility lines shown and any other lines not of record or not shown on these plans.



LOCATION MAP NO SCALE

BENCH MARK:
 P.K. nail & tag in westerly curb return,
 Washington & Lincoln Elevation 912.466
 City B.M. 66-J

ALBERT A. WEBB ASSOCIATES
 CIVIL ENGINEERS
 RIVERSIDE, CALIFORNIA
 APPROVED BY: *Albert A. Webb* DATE 7/15/77
 R.E. No. 9876

MARK	REVISIONS	APPR.	DATE

City of Riverside - Domestic System
 by *Wally Skyles* 8-26-77
 Chief Utilities Engineer - Water Date

CITY OF RIVERSIDE, CALIFORNIA
 PUBLIC WORKS DEPARTMENT

APPROVED BY: *Wally Skyles* DATE 8/3/78
 PRINCIPAL ENGINEER
 PARK DEPARTMENT
 TRAFFIC DIVISION
 CHIEF PUB. WKS. ENGR. 3.3

*AS BUILT 5-79 KPT.

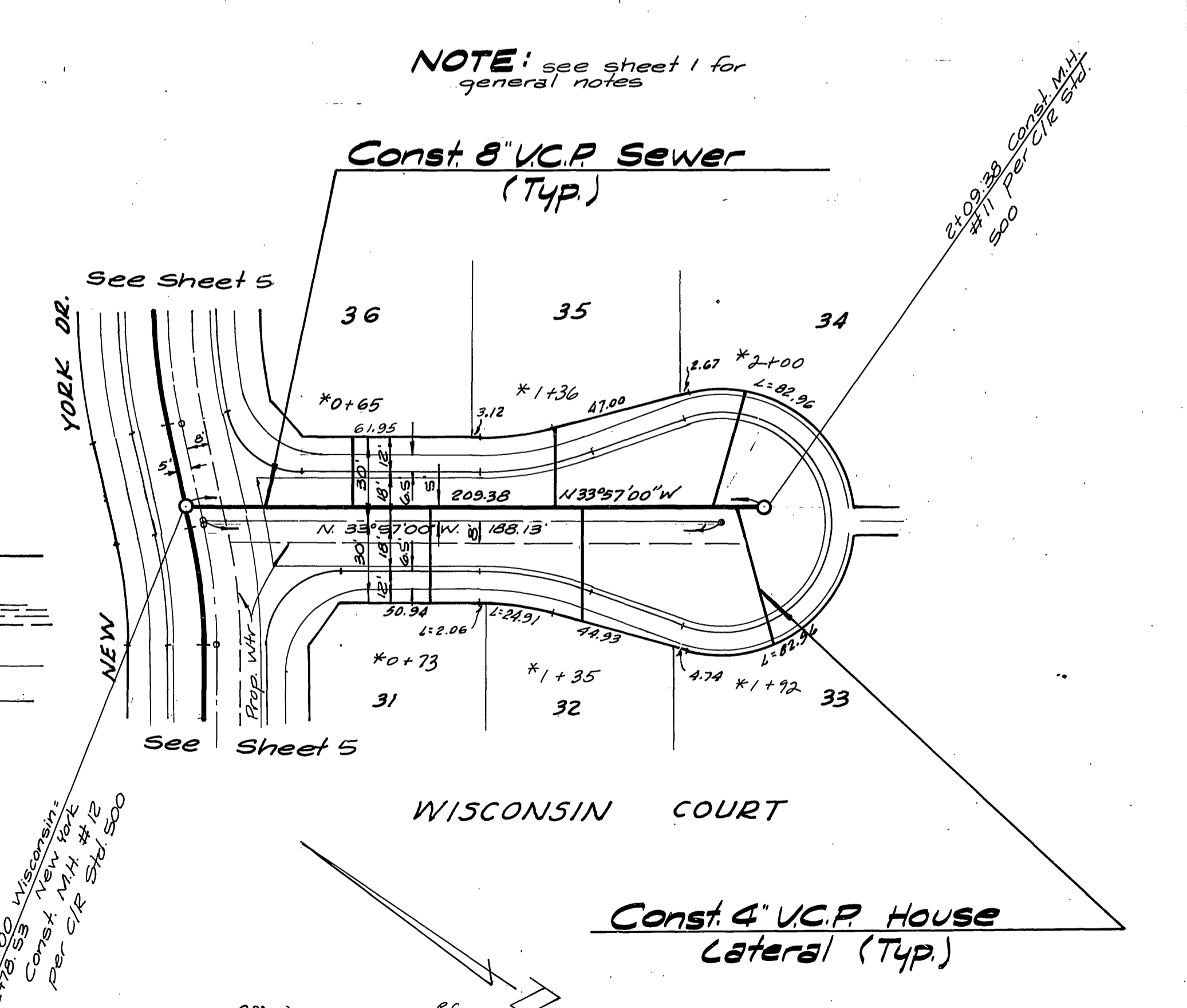
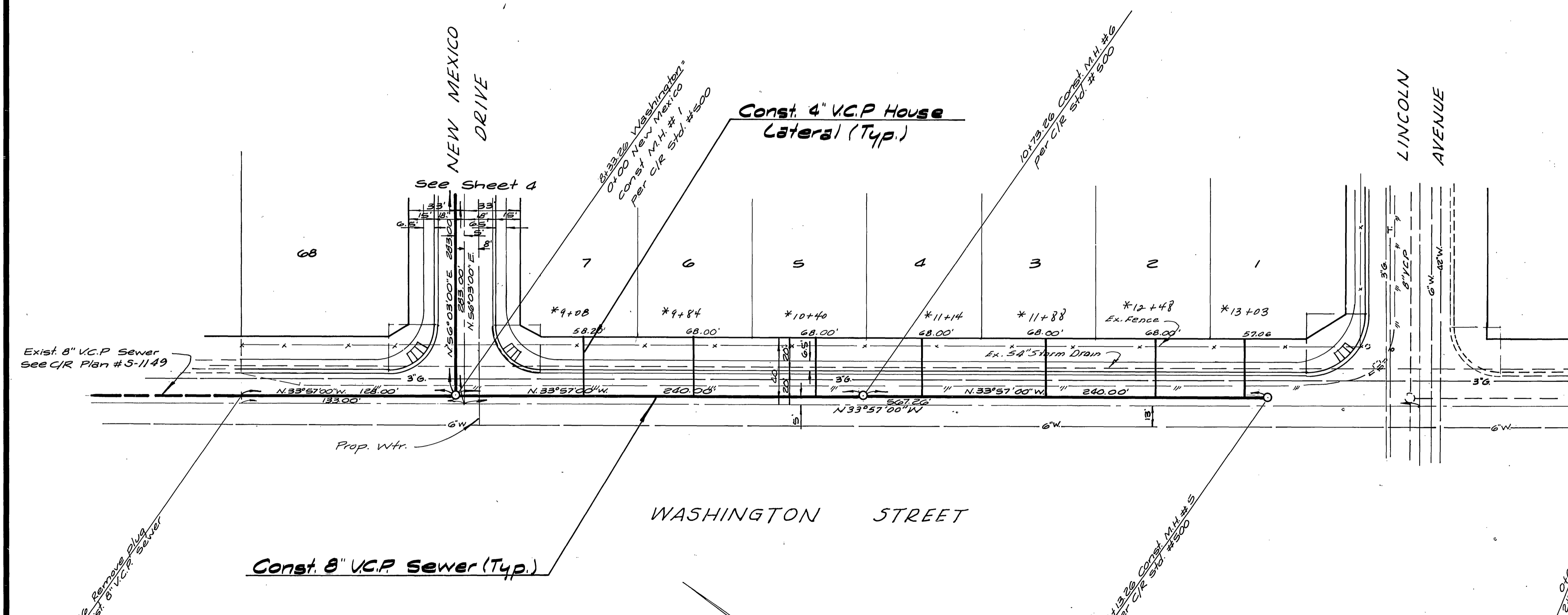
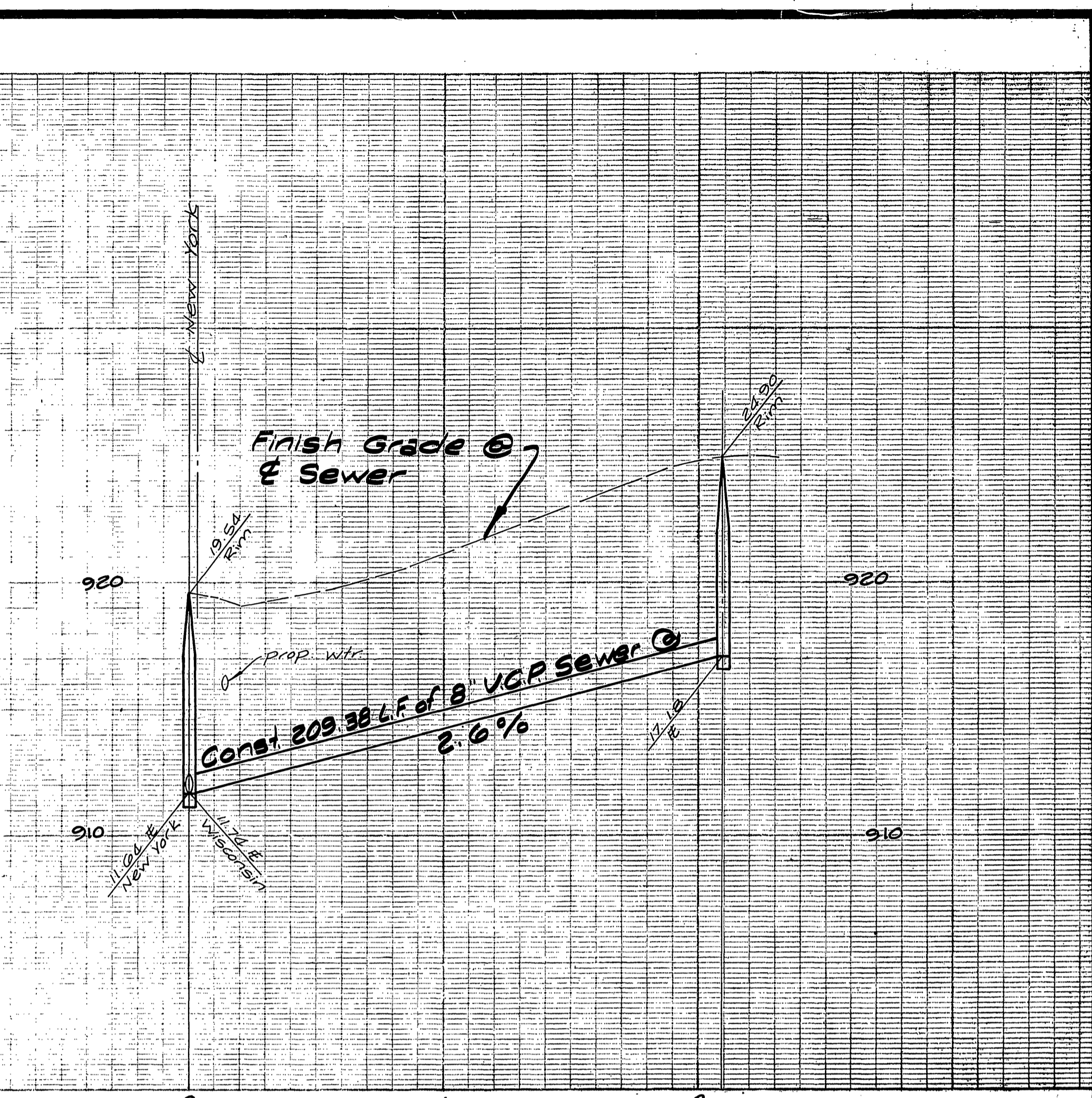
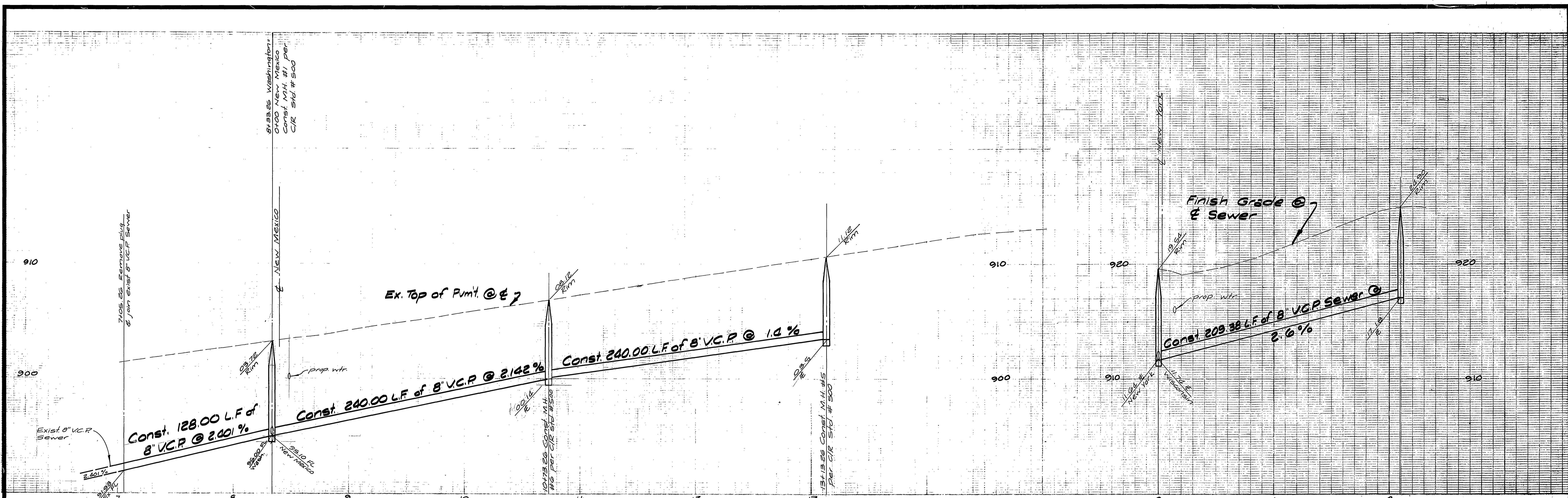
SEWER PLAN AND PROFILE

TRACT No. 6734
 INDEX SHEET

SCALE: Horiz 1"=40', Vert 1"=30'

ACCOUNT No. INDEXED RR
 DRAWING NUMBER
5-1162
 SHEET 1 OF 5
 77-121-B

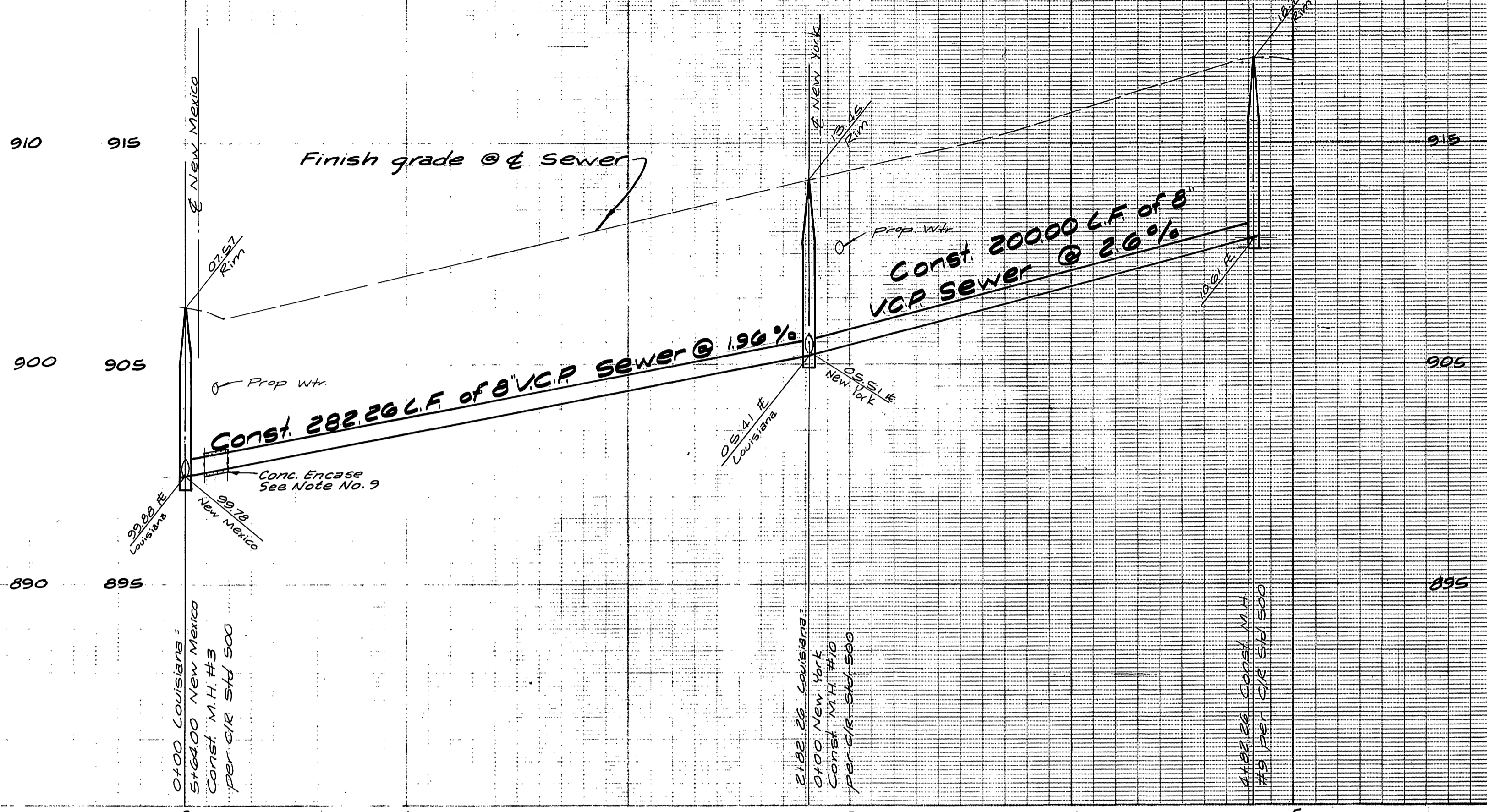
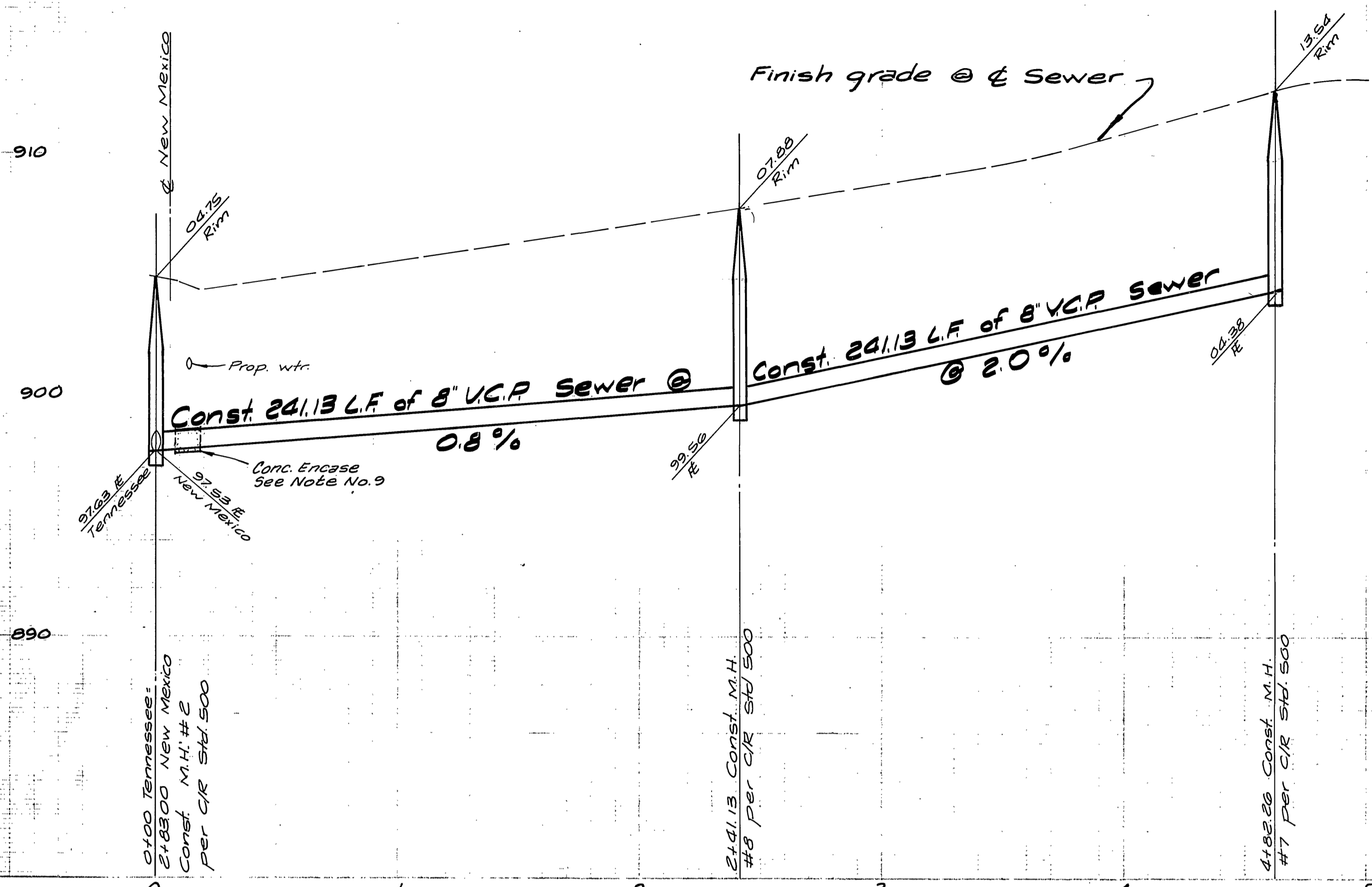
W.O. 77-121 FOR: Woodhaven Dev. F.B. 1039 DESIGNED BY: P.H. DRAWN BY: P.H. CHECKED BY:



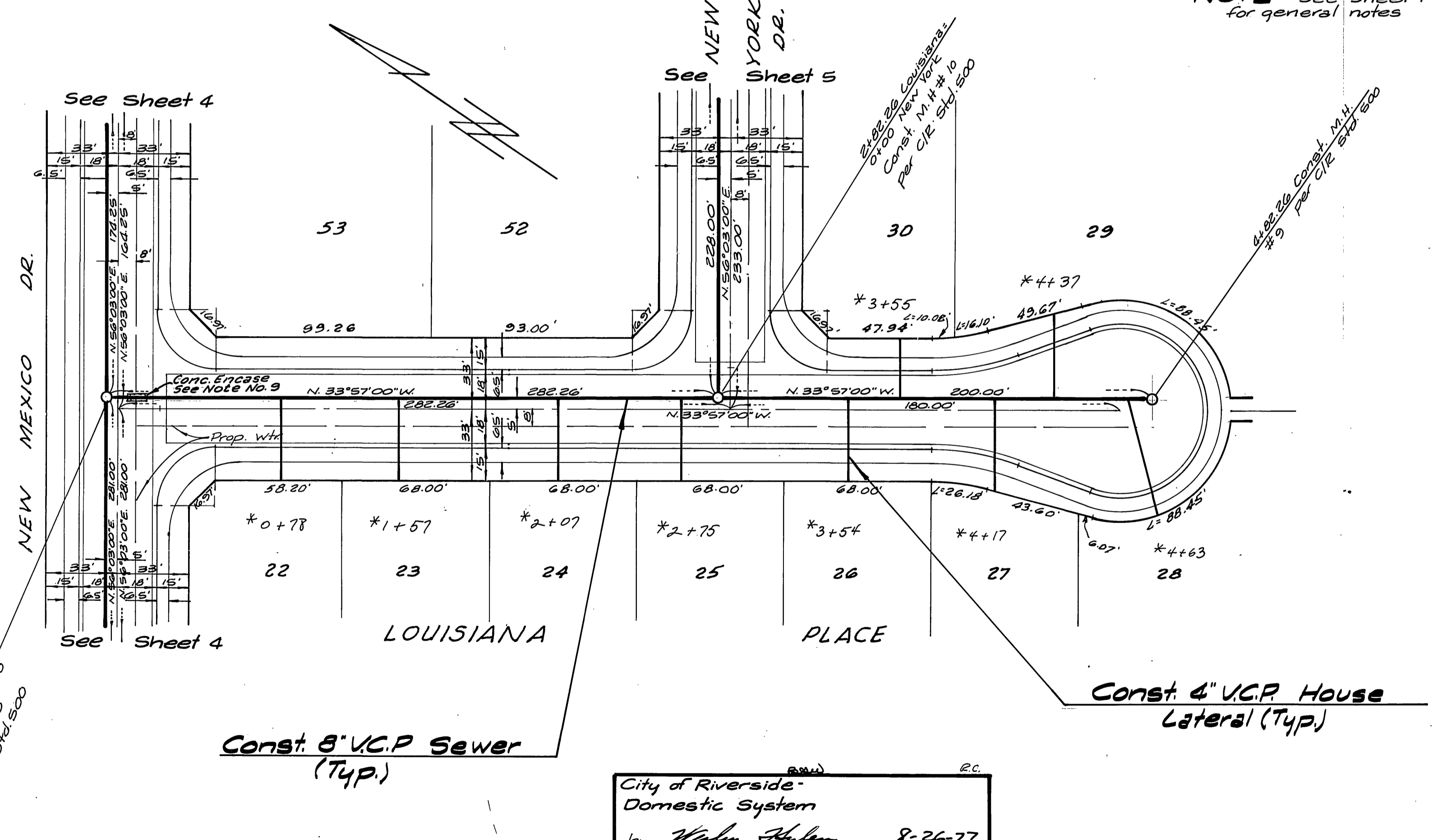
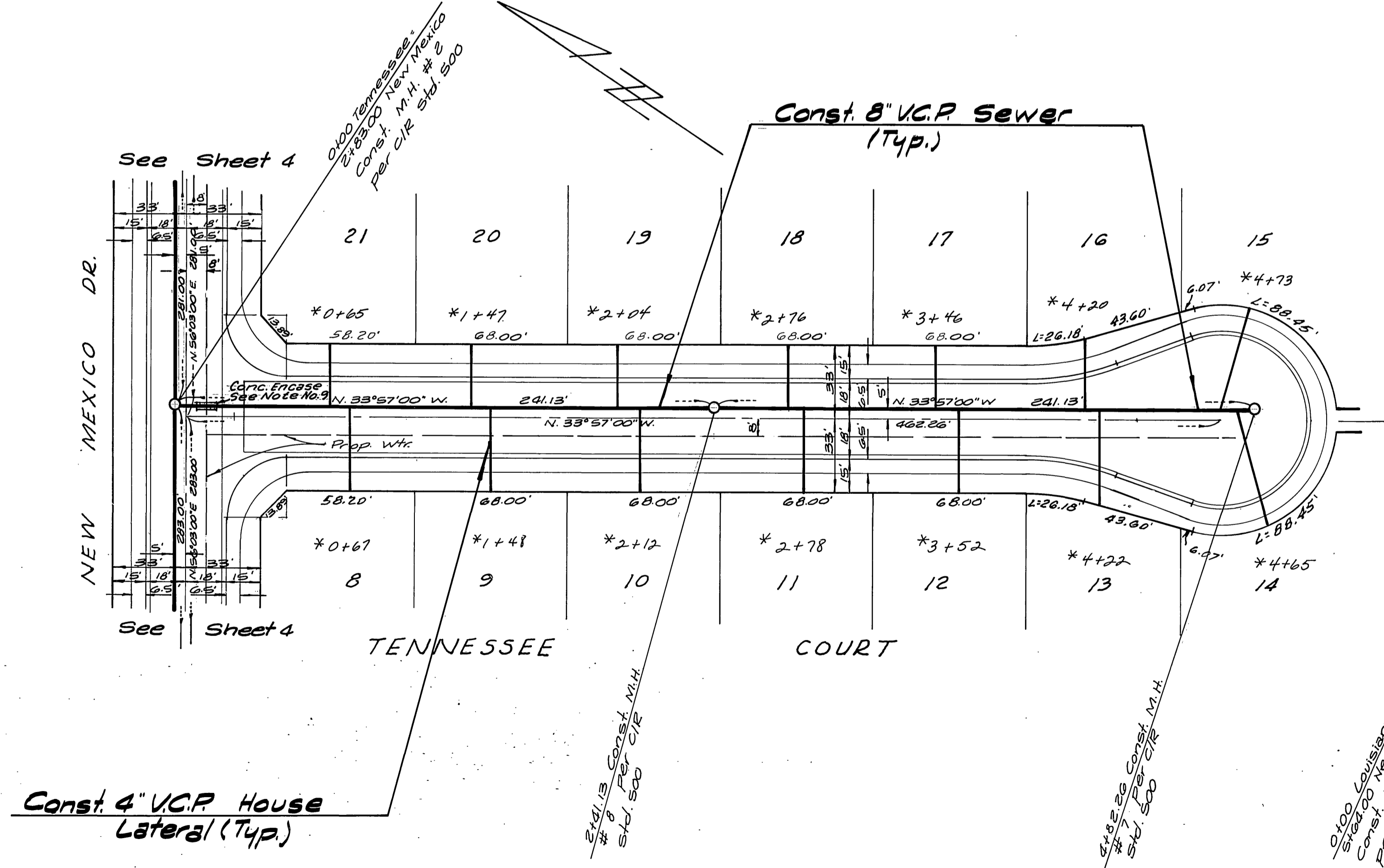
NOTE: see sheet 1 for general notes

BENCH MARK:
 Pk. nail & tag in westerly curb return,
 Washington & Lincoln Elev. 92.466
 City B.M. 66-1

City of Riverside - Domestic System Chief Utilities Engineer - Water Date 8-26-77		*AS BUILT 5-79 LPT INDEXED RR	
ALBERT A. WEBB ASSOCIATES CIVIL ENGINEERS RIVERSIDE, CALIFORNIA APPROVED BY: <i>Albert A. Webb</i> DATE 7/15/77 R.E. No. 2876		CITY OF RIVERSIDE, CALIFORNIA PUBLIC WORKS DEPARTMENT APPROVED BY: <i>Walter J. Johnson</i> DATE 3/1/78 PRINCIPAL ENGINEER PARK DEPARTMENT TRAFFIC DIVISION CHIEF PUB. WORKS ENGINEER	
W.O. 77121 FOR Woodhaven Dev. F.B. 1039		SEWER PLAN AND PROFILE ACCOUNT No. 5-1162 TRACT NO. 6734 WASHINGTON STREET WISCONSIN COURT SHEET 2 OF 5 SCALE: Horiz. 1"=40', Vert. 1"=4'	



NOTE: See Sheet 1 for general notes



Const. 4" V.C.P. House Lateral (Typ.)

Const. 8' V.C.P. Sewer (Typ.)

Const. 4" V.C.P. House Lateral (Typ.)

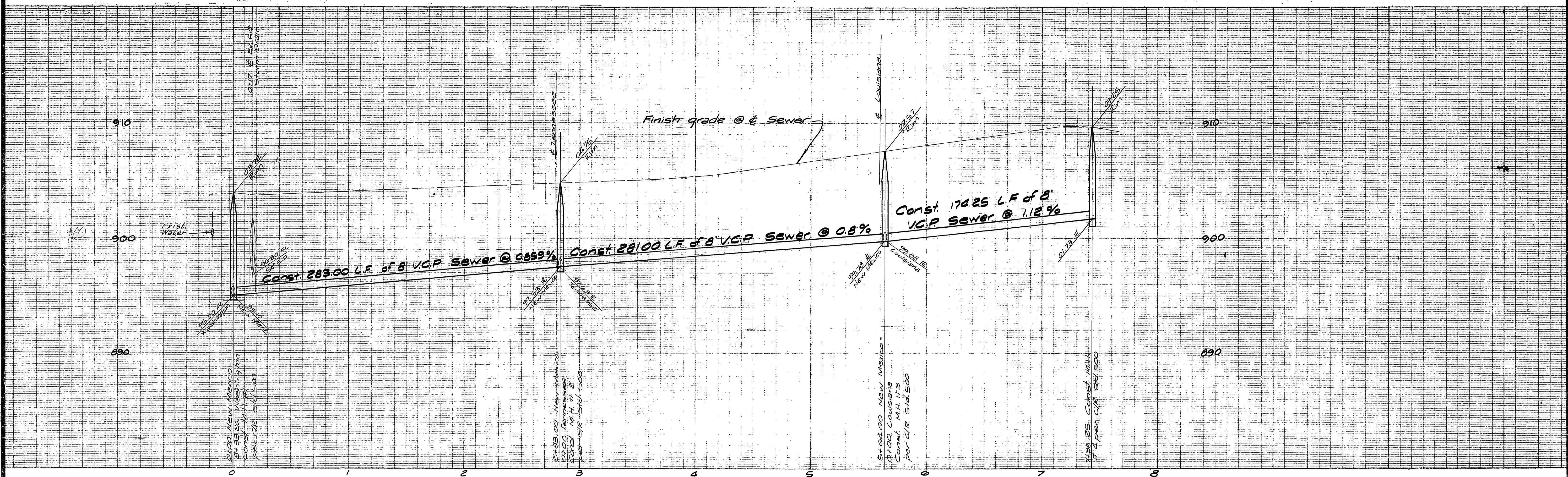
BENCH MARK:
 PK nail & tag in westerly curb return
 Washington & Lincoln Elev. 912.466
 City B.M. 66-J

ALBERT A. WEBB ASSOCIATES
 CIVIL ENGINEERS
 RIVERSIDE, CALIFORNIA
 APPROVED BY: *Ernst H. Webb* DATE: 7/15/77
 R.E. No. 9876

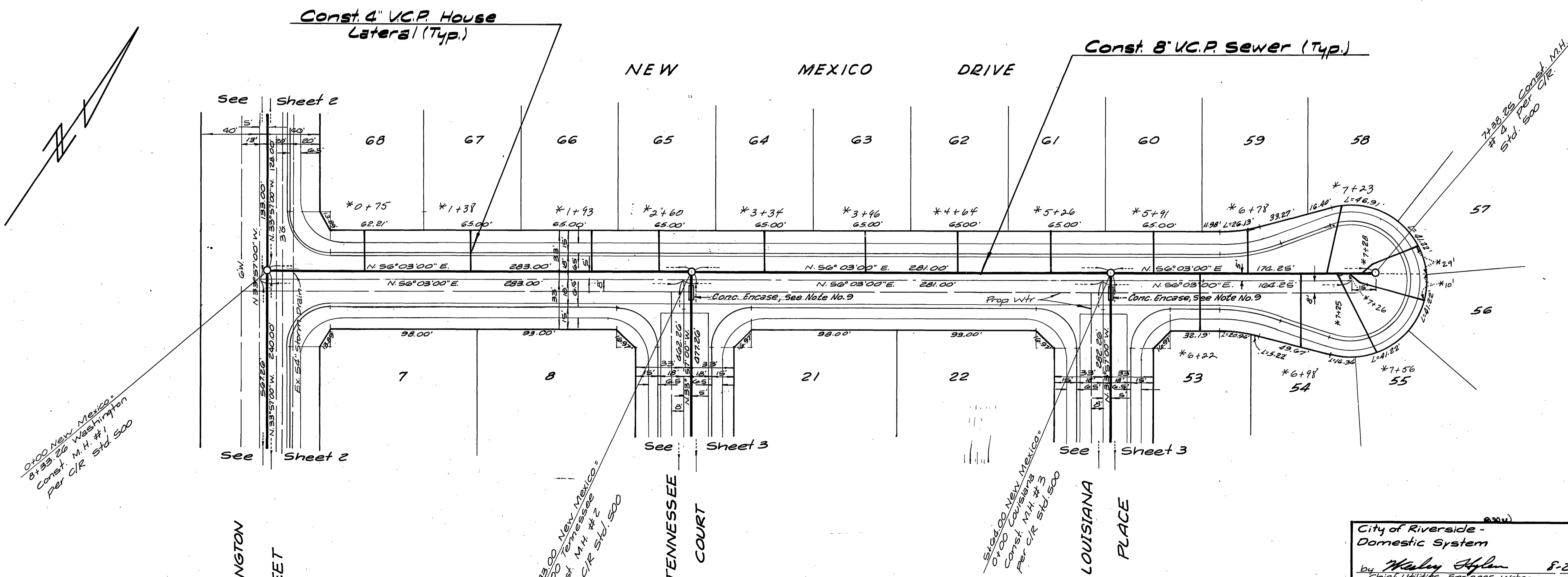
City of Riverside - Domestic System
 by *Wally Stylen* 8-26-77
 Chief Utilities Engineer - Water Date
 APPROVED BY: *Wally Stylen* DATE: 8/3/77
 PRINCIPAL ENGINEER
 TRAFFIC DIVISION
 CHIEF PUB. WKS. ENGR.

* AS BUILT 5-79 KPT
SEWER PLAN AND PROFILE
 ACCOUNT No. INDEXED & D.
 TRACT No. 6734
TENNESSEE COURT
LOUISIANA PLACE
 DRAWING NUMBER
5-1162
 SHEET 3 OF 5
 SCALE: Horiz 1"=40', Vert 1"=4'

W.O. 77-121 FOR: Woodhaven Dev. F.B. 1039 DESIGNED BY: P.H. DRAWN BY: P.H. CHECKED BY:



NOTE: See Sheet 1 for general notes



BENCH MARK:
 P.K. nail & tag in westerly curb return, Washington & Lincoln
 Elev. 98.466 City B.M. 66-T

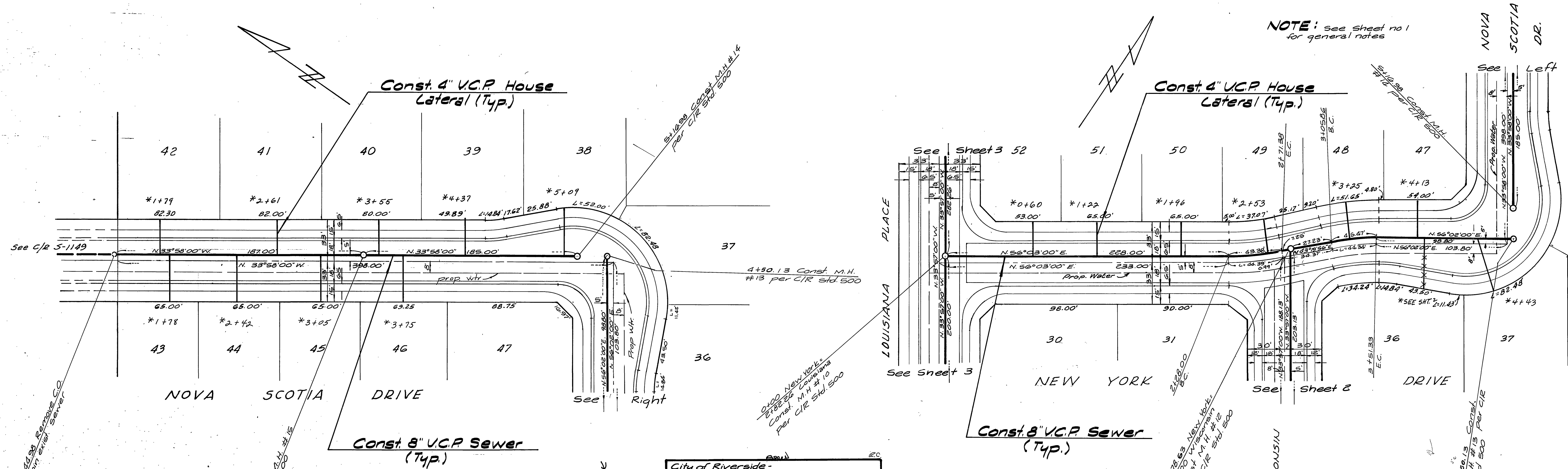
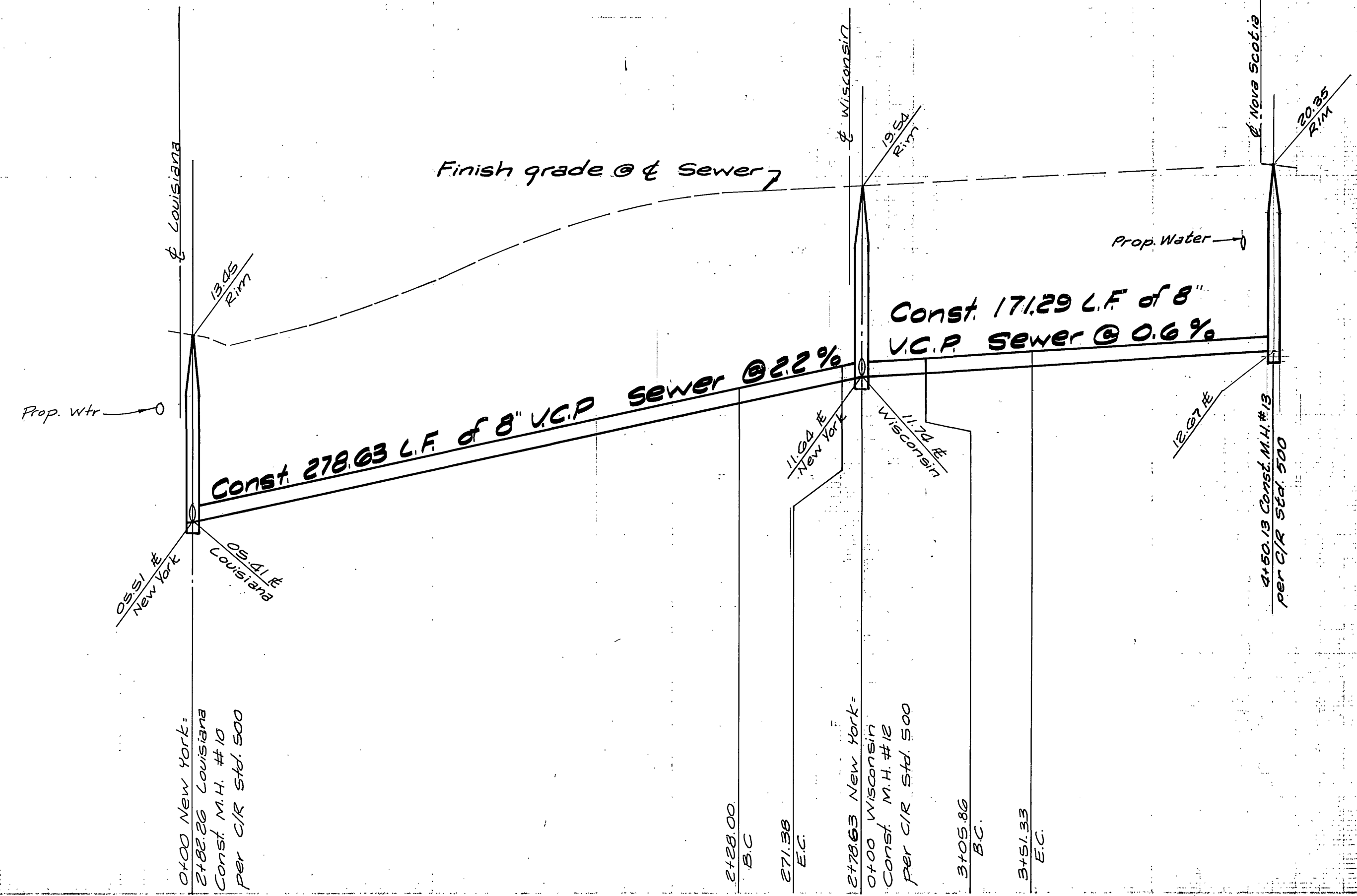
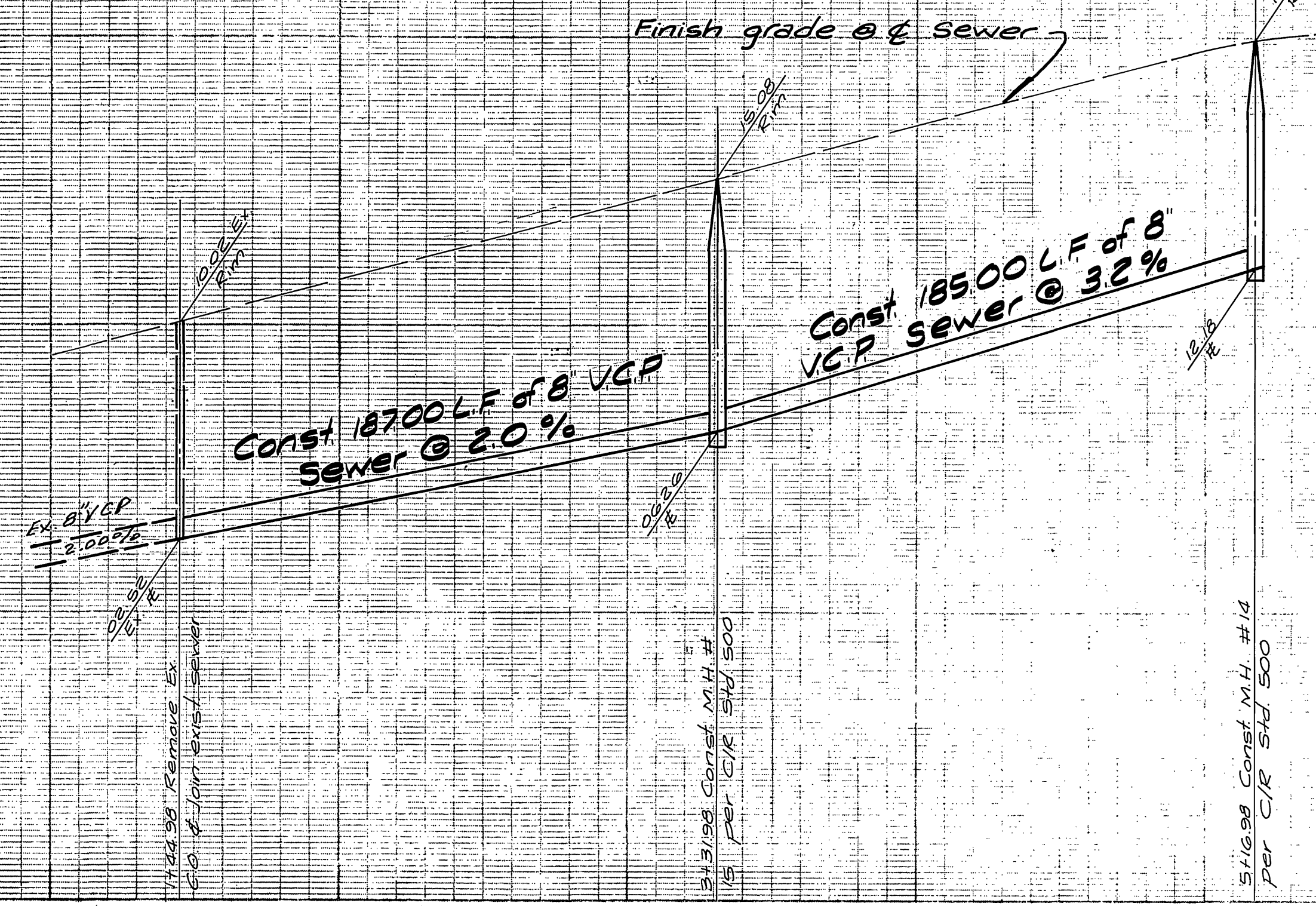
ALBERT A. WEBB ASSOCIATES
 CIVIL ENGINEERS
 RIVERSIDE, CALIFORNIA
 APPROVED BY: *Albert A. Webb* DATE 7/15/77
 R.E. No. 9876

City of Riverside - Domestic System
 Chief Utilities Engineer - water
 City of Riverside - Public Works Department
 APPROVED BY: *Wesley Hefner* DATE 8-26-77
 PRINCIPAL ENGINEER
 PARK DEPARTMENT
 TRAFFIC DIVISION
 CHIEF PUB. WKS. ENGR. # 313
 DATE 3/3/78

*AS BUILT 5-79 KPT
SEWER PLAN AND PROFILE
 TRACT No. 6734
 NEW MEXICO DRIVE
 ACCOUNT No. 5-1162
 DRAWING NUMBER
 SHEET 4 OF 5
 77-121-B
 SCALE: Horiz. 1"=40' VERT. 1"=4'

W.D. 77-121 FOR Woodhaven Dev. F.B. 1039

DESIGNED BY P.H. DRAWN BY P.H. CHECKED BY



NOTE: See Sheet no 1 for general notes

BENCH MARK:
 P.K. nail & tag in westerly curb return,
 Washington & Lincoln Elev. 912.466
 City B.M. 66-J

City of Riverside - Domestic System
 by *Wesley Stylian* 8-26-77
 Chief Utilities Engineer - Water

ALBERT A. WEBB ASSOCIATES
 CIVIL ENGINEERS
 RIVERSIDE, CALIFORNIA
 APPROVED BY *P. J. N. Wells* DATE 7/15/77
 R.E. No. 9876

CITY OF RIVERSIDE, CALIFORNIA PUBLIC WORKS DEPARTMENT		SEWER PLAN AND PROFILE		ACCOUNT NO.
APPROVED BY <i>[Signature]</i> PRINCIPAL ENGINEER		APPROVED BY <i>[Signature]</i> DIRECTOR OF PUBLIC WORKS		DRAWING NUMBER
TRAFFIC DIVISION CHIEF PUB. WKS. ENGR. <i>[Signature]</i>		TRACT NO. 6734 NOVA SCOTIA DRIVE NEW YORK DRIVE		S-1162
DATE 3/3/78		SCALE: Horiz. 1"=40', Vert. 1"=4'		SHEET 5 OF 5
DESIGNED BY P.H. DRAWN BY P.H. CHECKED BY P.H.				77-121-B

W.O. 7121 FOR Woodhaven Dev. F.B. 1039