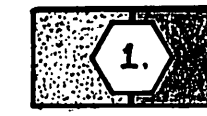
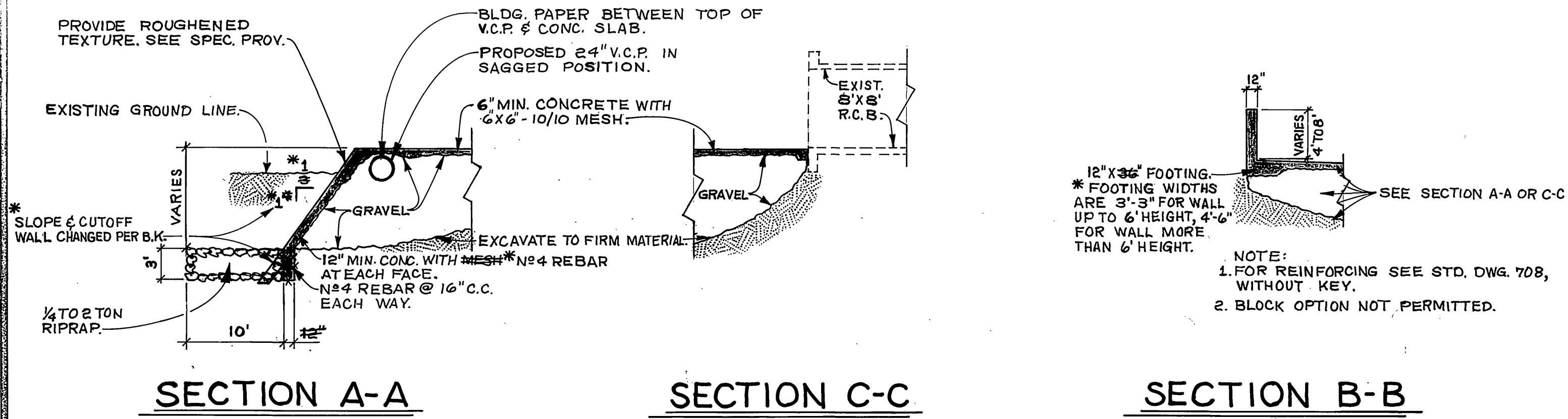


CONSTRUCTION LEGEND



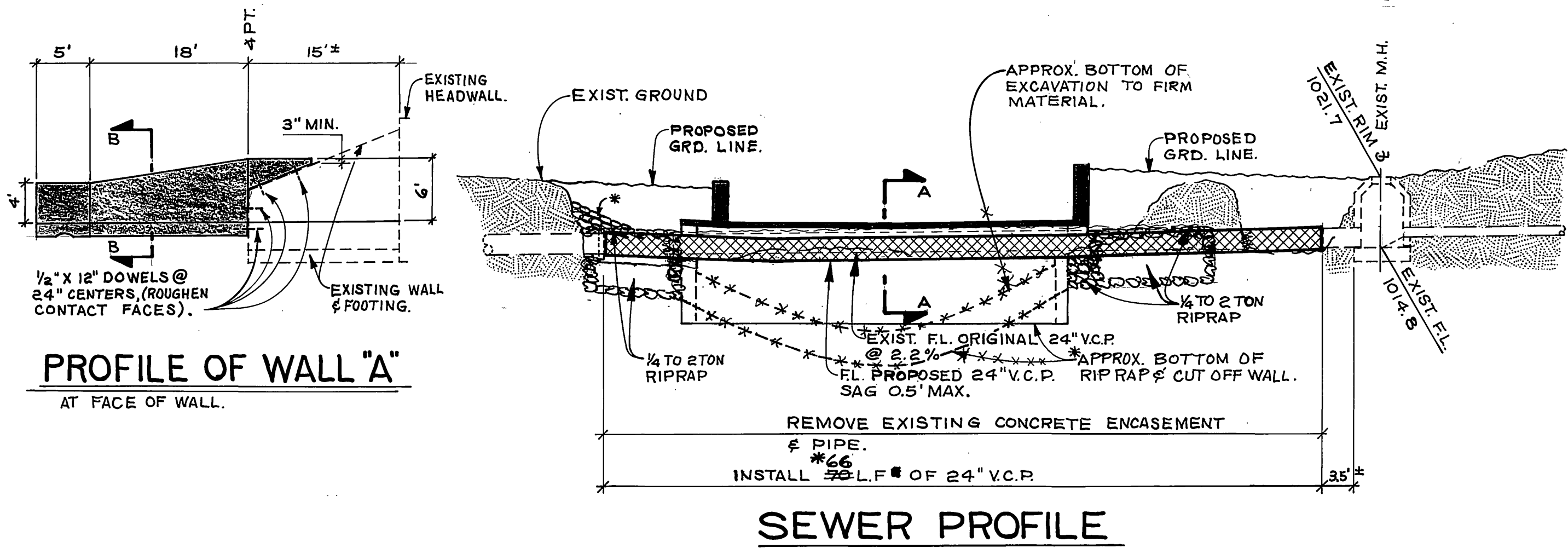
CONCRETE: 560 B 3250
STEEL: $f_s = 20,000$ p.s.i.



SECTION A-A

SECTION C-C

SECTION B-B

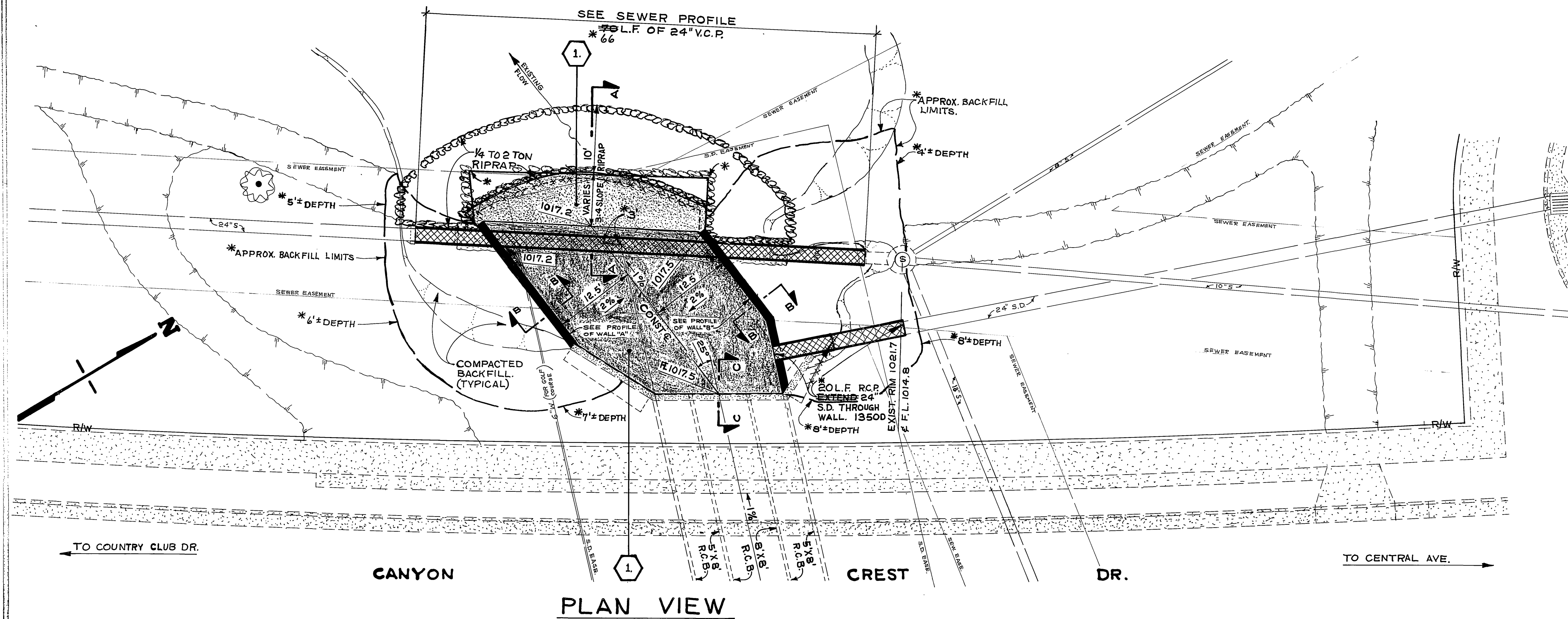


PROFILE OF WALL "A" AT FACE OF WALL.

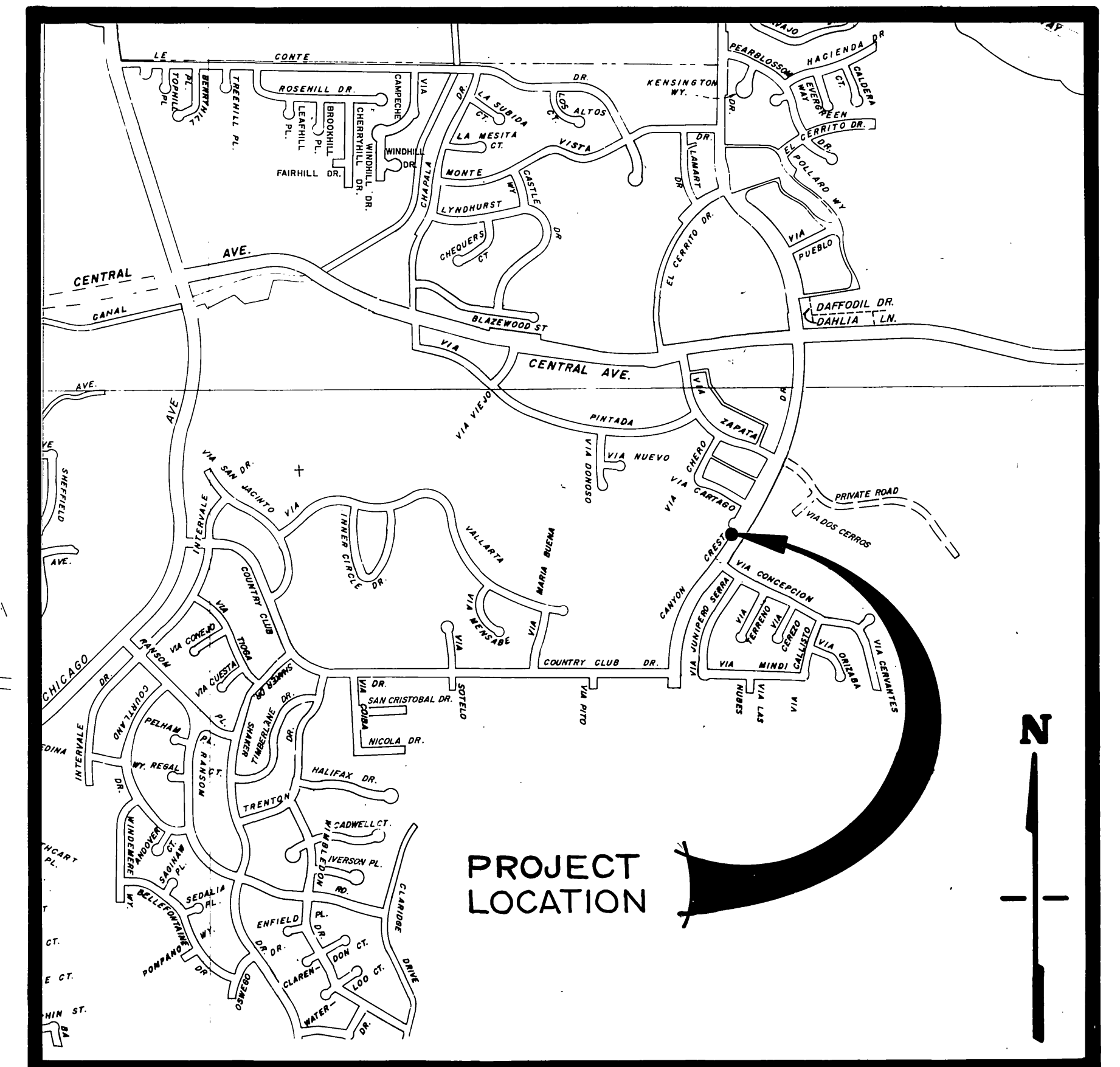
PROFILE OF WALL "B" FOR DETAILS NOT SHOWN, SEE WALL "A"

GENERAL CONSTRUCTION NOTES

1. FOR DETAILS NOT SHOWN SEE SPECIAL PROVISIONS.



PLAN VIEW



PROJECT LOCATION PLAN

SCALE 1" = 1000'

*AS BUILT 5-15-78

<p>CITY OF RIVERSIDE PUBLIC WORKS DEPARTMENT</p>		<p>SYCAMORE CANYON TRUNK SEWER REPLACEMENT AT CANYON CREST DRIVE</p>		<p>ACCOUNT No. 32-577-503</p> <p>S-1164</p> <p>SHEET 1 OF 1</p>
<p>APPROVED BY PRINCIPAL ENGINEER PARK DEPARTMENT TRAFFIC DIVISION CHIEF P. W. ENGINEER SEWAGE DIVISION</p>	<p>DATE 3/16/78</p>	<p>APPROVED BY PUBLIC WORKS DIRECTOR</p>	<p>DATE 3/16/78</p>	<p>SCALE: 1" = 10'</p>
<p>DESIGNED BY: RCF DRAWN BY: [Signature] CHECKED BY: [Signature]</p>	<p>REVISIONS</p>	<p>APPR. DATE</p>	<p>DATE</p>	