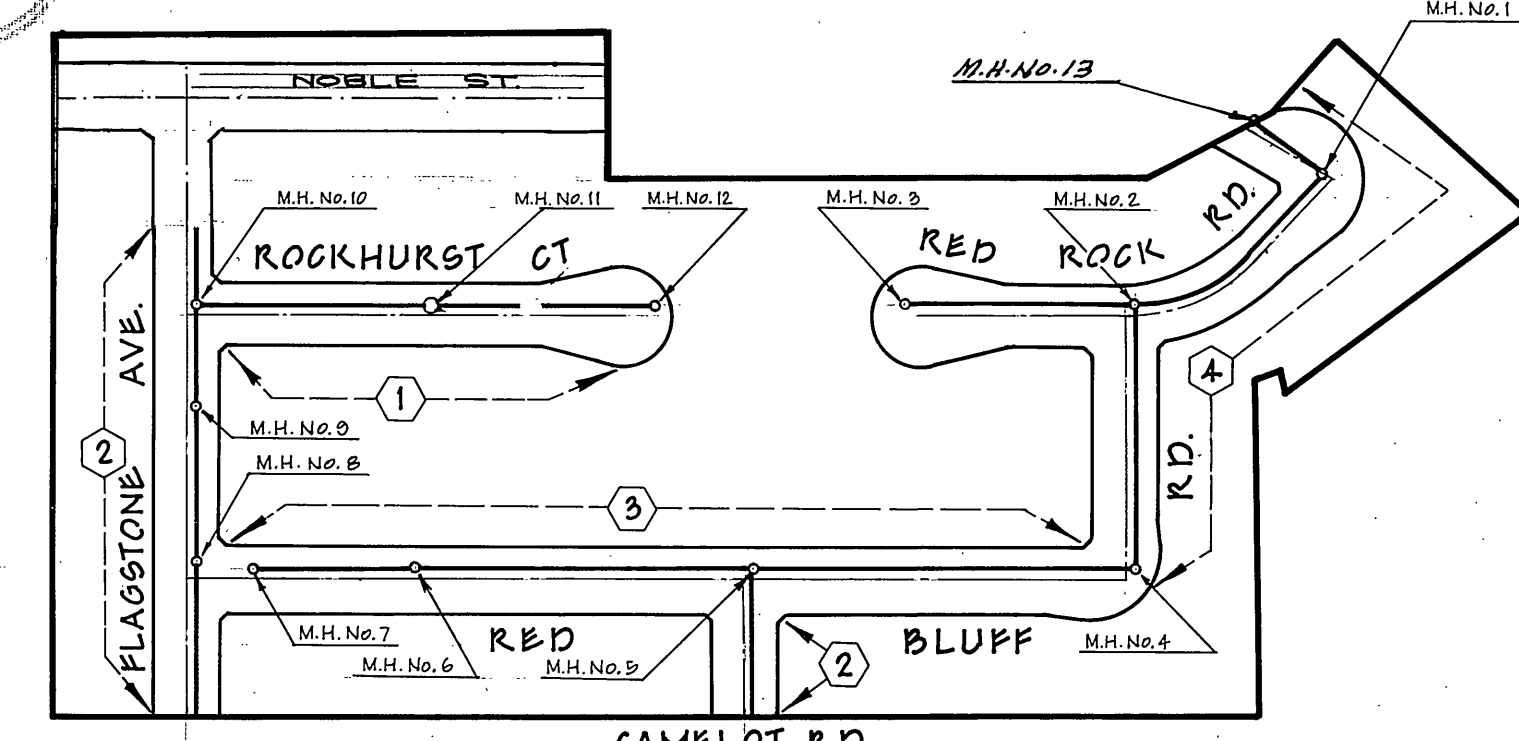
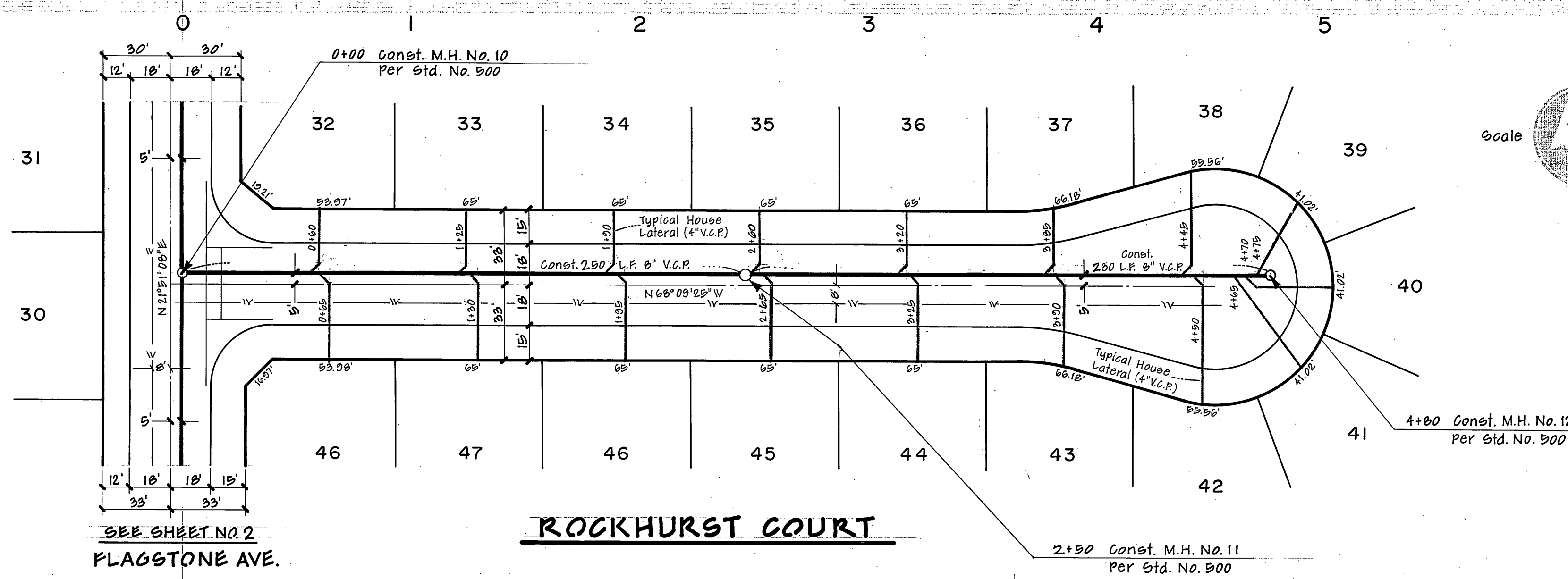


PROFILE SCALE
Horiz 1"=40'
Vert. 1"=4'



INDEX MAP
1"=200'

GENERAL NOTES

1. Construction shall be in accordance with Standard Specifications for Public Works Construction, 1976 Edition, and the City of Riverside Standard Drawings.
2. It shall be the responsibility of the contractor to clear the right of way in accordance with the provisions of law as it affects each utility, irrigation line appurtenances and at no cost to the City.
3. Laterals to be 4" and extended to property line.
4. Prior to construction of sewer, the contractor is to expose existing sewer and contact the Engineer for verification of existing elevations.
5. The sewer contractor is to adjust manhole covers to final grade after paving is completed.
6. A plug shall be installed and will remain in place where the new sewer connects with the existing sewer until such time that the new sewer is accepted by the City.

ENCASE SEWER MAIN 4" EACH SIDE OF WATER MAIN CROSSING WITH TYPE "C" CONCRETE ENCASUREMENT AS PER PUBLIC UTILITY DWS 520-225

NOTICE TO CONTRACTOR

The existence and location of any underground utility pipe or substructures shown on these plans are obtained by a search of the available records. To the best of our knowledge there are no existing utilities except as shown on these plans. The contractor is required to take due precautionary measures to protect the utility lines shown and any other lines not of record.

THE PRIVATE ENGINEER SIGNING THESE PLANS IS RESPONSIBLE FOR ACCURACY AND ACCEPTABILITY OF THE WORK HEREON. IN THE EVENT OF DISCREPANCIES ARISING DURING CONSTRUCTION, THE PRIVATE ENGINEER SHALL BE RESPONSIBLE FOR DETERMINING AN ACCEPTABLE SOLUTION AND REVISIONS TO THE PLANS FOR APPROVAL BY THE CITY.

CITY OF RIVERSIDE
DOMESTIC SYSTEM
Wally Taylor 10-28-77
CHIEF UTILITIES ENGINEER, WATER Date

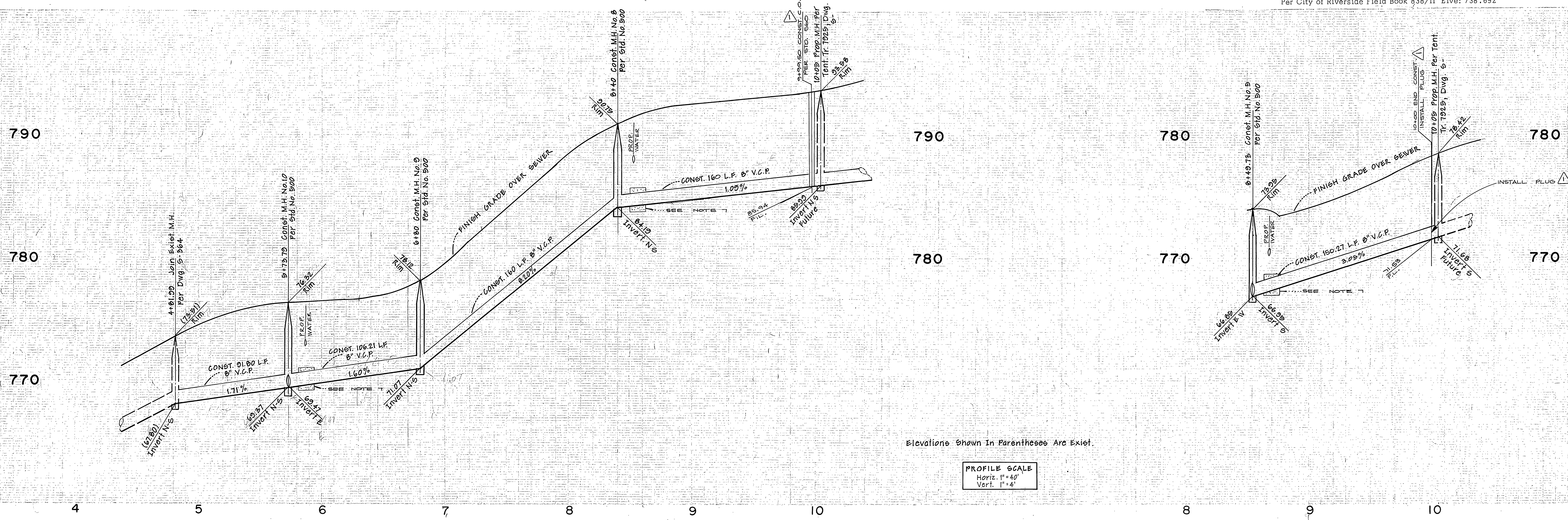
ALBERT A. WEBB ASSOCIATES
CIVIL ENGINEERS
RIVERSIDE, CALIFORNIA
APPROVED BY: *Albert A. Webb* DATE 6-1-77
R.E. No. 2576

MARK	REVISIONS	APPR.	DATE

CITY OF RIVERSIDE, CALIFORNIA
PUBLIC WORKS DEPARTMENT
APPROVED BY: *Robert L. Challen* DATE 3-13-78
PRINCIPAL ENGINEER
PARK DEPARTMENT
TRAFFIC DIVISION
CHIEF PUB. WKS. ENGR.

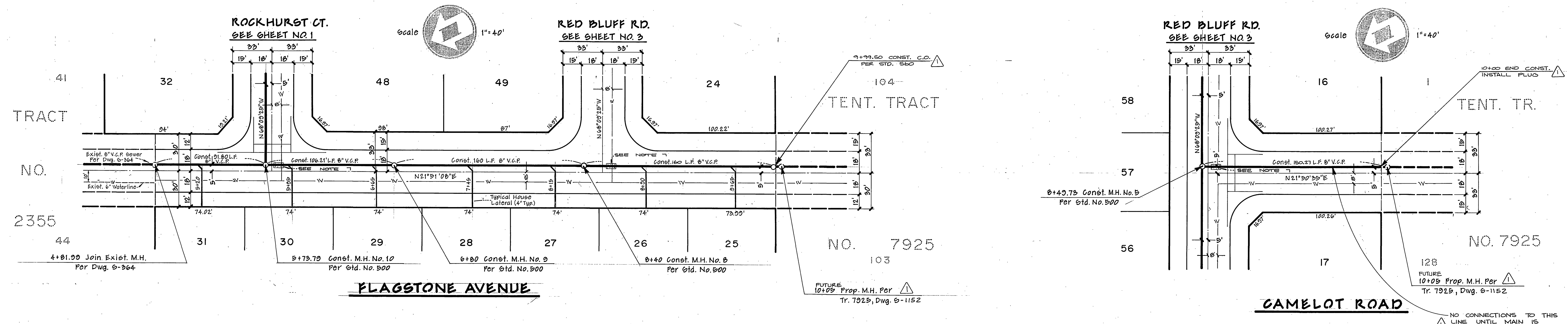
SEWER IMPROVEMENT PLANS
TRACT 7948
ROCKHURST COURT

ACCOUNT No.
DRAWING NUMBER
S-1165
SHEET 1 OF 4
SCALE: HORIZ. 1"=40' VERT. 1"=4'



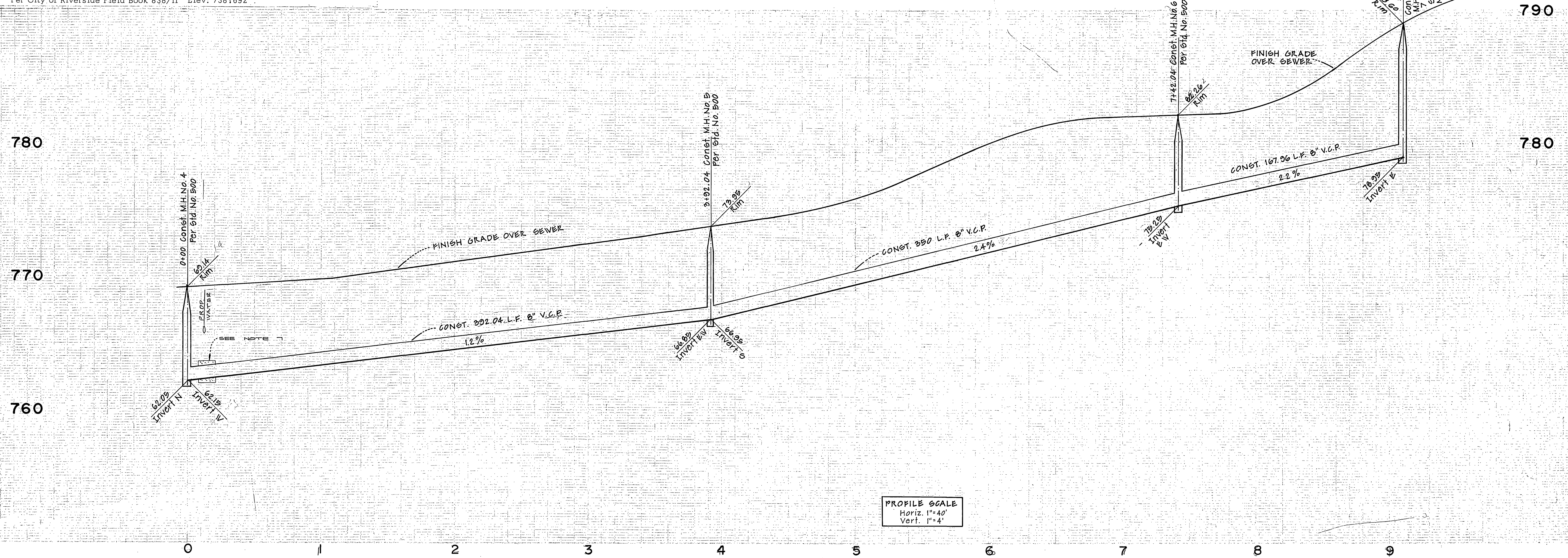
Elevations Shown in Parentheses Are Exist.

PROFILE SCALE
Horiz. 1"=40'
Vert. 1"=4'

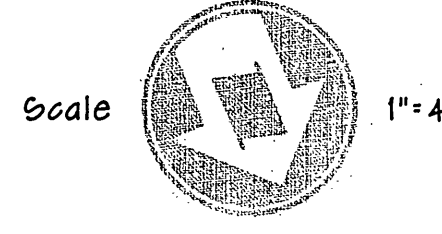
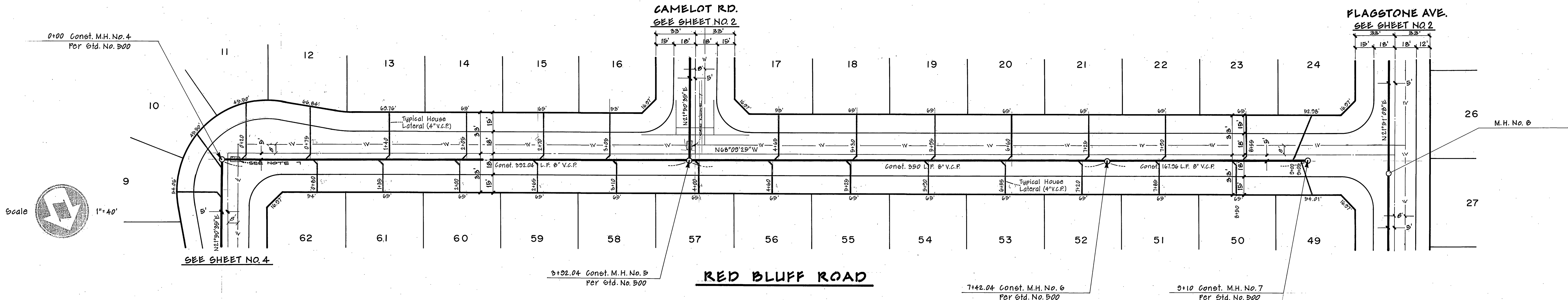


CITY OF RIVERSIDE DOMESTIC SYSTEM <i>Wally Joffe</i> 10-28-77 CHIEF UTILITIES ENGINEER, WATER Date	ALBERT A. WEBB ASSOCIATES CIVIL ENGINEERS RIVERSIDE, CALIFORNIA APPROVED BY <i>[Signature]</i> DATE 6-1-77 R.E. No. 2876	CITY OF RIVERSIDE, CALIFORNIA PUBLIC WORKS DEPARTMENT APPROVED BY <i>[Signature]</i> DATE 3/3/78 TRAFFIC DIVISION CHIEF PUB. WKS. ENGR. 3-13	SEWER IMPROVEMENT PLANS TRACT 7948 FLAGSTONE AVENUE CAMELOT ROAD SCALE: HORIZ. 1"=40' VERT. 1"=4'	ACCOUNT NO. DRAWING NUMBER S-1165
				SHEET 2 OF 4 TQ-155-B

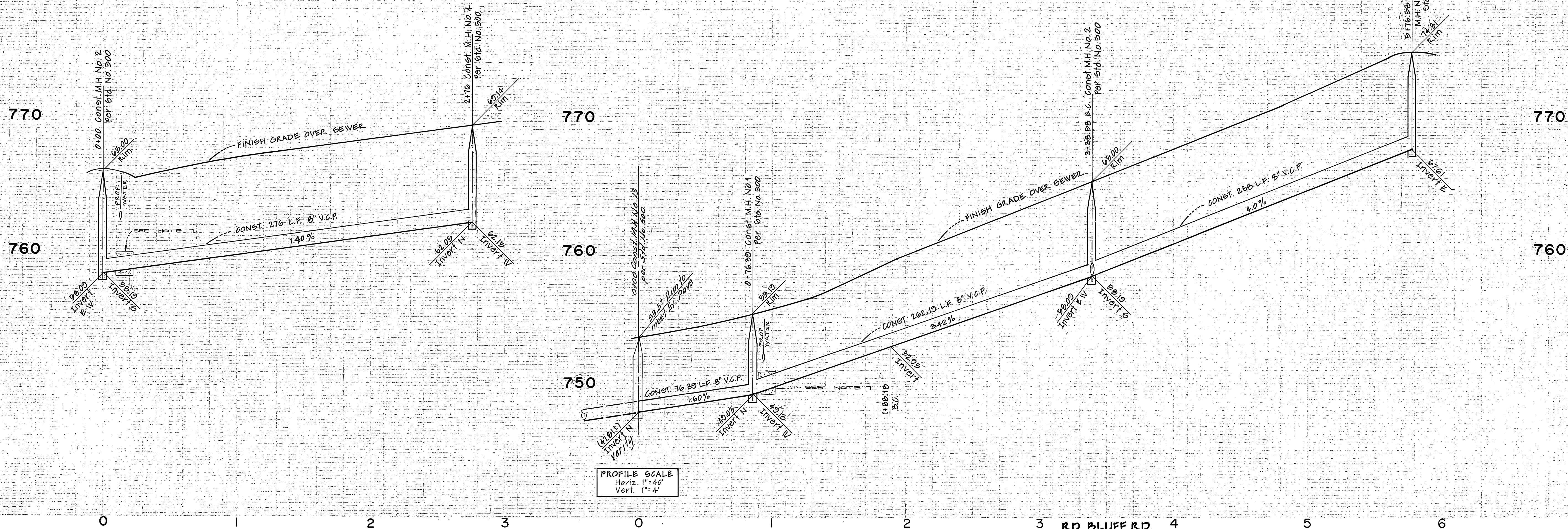
BENCHMARK # G3H: Found P.K. nail in the N.E. curb return at Wells & Challen
Per City of Riverside Field Book 838/11 Elev: 738.692



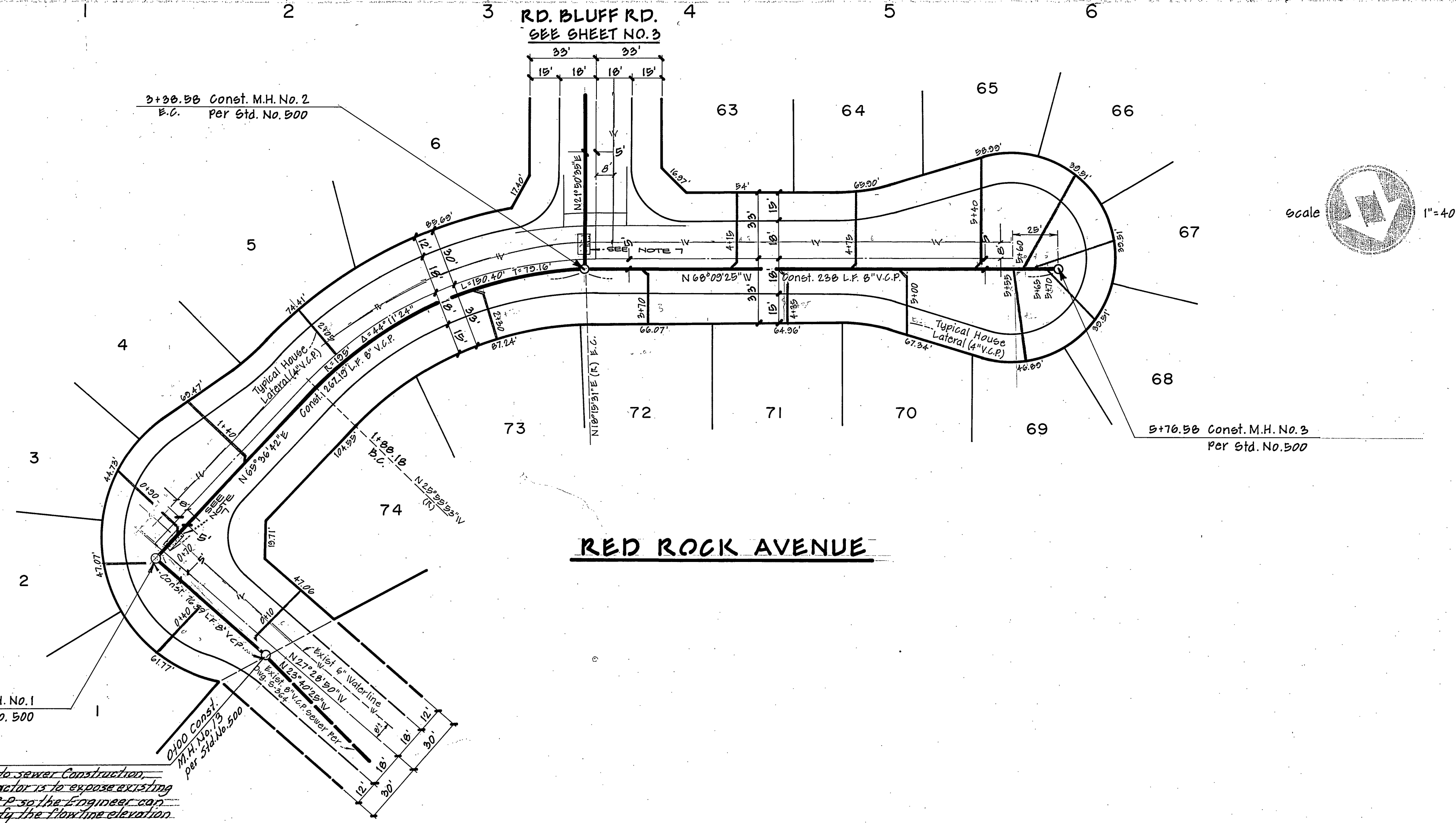
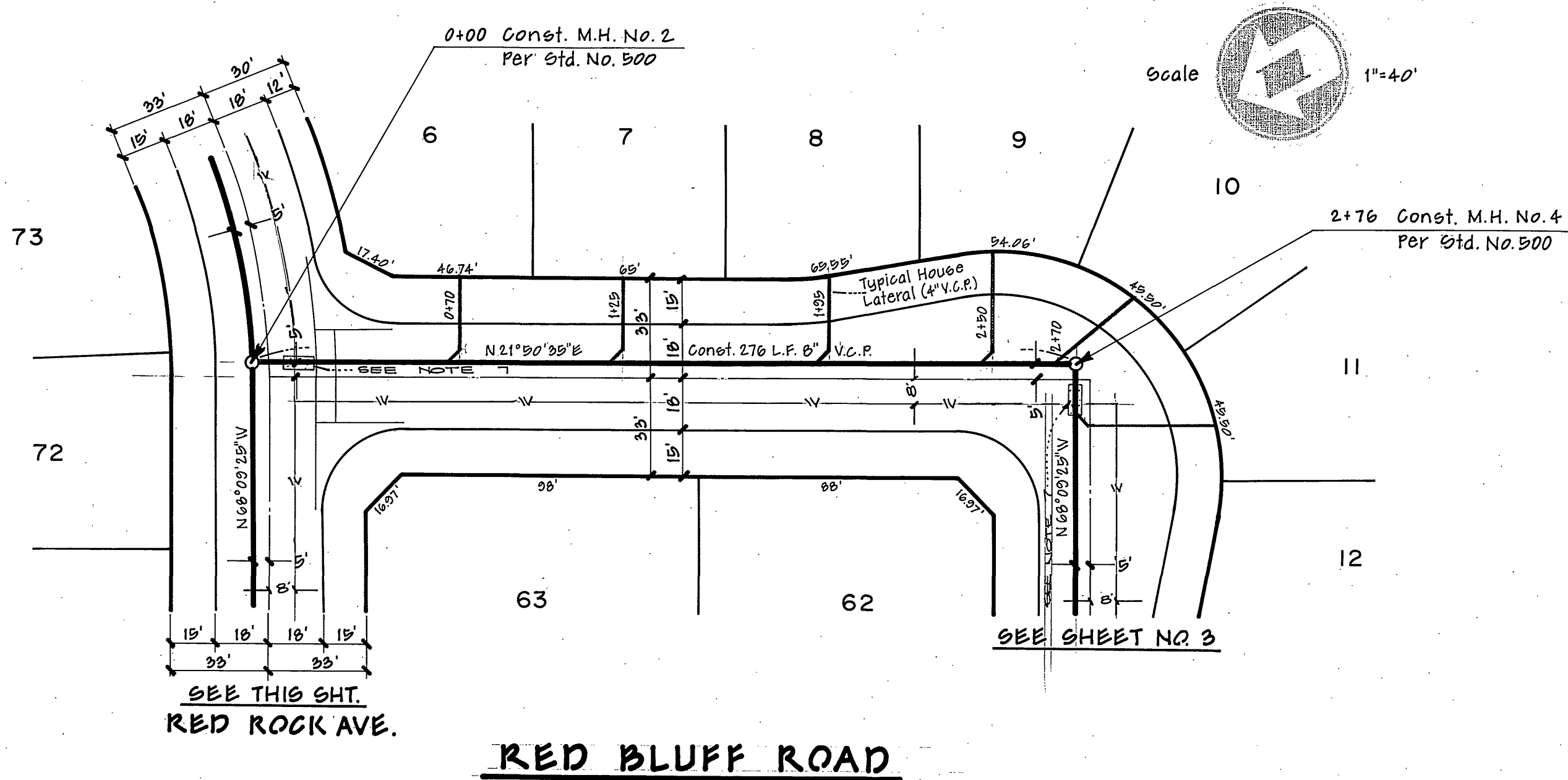
PROFILE SCALE
Horiz. 1"=40'
Vert. 1"=4'



CITY OF RIVERSIDE DOMESTIC SYSTEM <i>Wally Hillman</i> 10-28-77 CHIEF UTILITIES ENGINEER, WATER	ALBERT A. WEBB ASSOCIATES CIVIL ENGINEERS RIVERSIDE, CALIFORNIA APPROVED BY: <i>[Signature]</i> DATE: 6-1-77 R.E. No. 2876	CITY OF RIVERSIDE, CALIFORNIA PUBLIC WORKS DEPARTMENT APPROVED BY: <i>[Signature]</i> DATE: 3/10 PRINCIPAL ENGINEER PARK DEPARTMENT TRAFFIC DIVISION CHIEF PUB. WKS. ENGR.	SEWER IMPROVEMENT PLANS TRACT 7948 RED BLUFF ROAD	ACCOUNT No. DRAWING NUMBER S-1165
				SHEET 3 OF 4 T-155-B
W.O. FOR: _____ F.B. _____		DESIGNED BY: P.E.B. DRAWN BY: R.B.K. CHECKED BY: _____		SCALE: HORIZ. 1"=40' VERT. 1"=4' DATE: 3/13/78



PROFILE SCALE
Horiz. 1"=40'
Vert. 1"=4'



Prior to sewer construction,
Contractor is to expose existing
8" V.C.P. so the Engineer can
verify the flowline elevation.
E.C.

CITY OF RIVERSIDE DOMESTIC SYSTEM CHIEF UTILITIES ENGINEER, WATER <i>Way Hylan</i> 10-28-77 Date	ALBERT A. WEBB ASSOCIATES CIVIL ENGINEERS RIVERSIDE, CALIFORNIA APPROVED BY <i>[Signature]</i> DATE 6-1-77 R.E. No. 2876	MARK REVISIONS APPR. DATE	CITY OF RIVERSIDE, CALIFORNIA PUBLIC WORKS DEPARTMENT		SEWER IMPROVEMENT PLANS	ACCOUNT No.
			APPROVED BY <i>[Signature]</i> DATE 3-13-78 PRINCIPAL ENGINEER PARK DEPARTMENT TRAFFIC DIVISION CHIEF PUB. WKS. ENGR.	APPROVED BY <i>[Signature]</i> DIRECTOR OF PUBLIC WORKS	TRACT 7948 RED BLUFF ROAD RED ROCK ROAD	DRAWING NUMBER S-1165 SHEET 4 OF 4
DESIGNED BY P.E.B. DRAWN BY R.O.K. CHECKED BY			DATE 3/13/78		SCALE: HORIZ. 1"=40' VERT. 1"=4'	76-155-B