

GENERAL NOTES

1. CONSTRUCTION SHALL BE IN ACCORDANCE WITH THE CITY OF RIVERSIDE, DEPARTMENT OF PUBLIC WORKS, STANDARD DRAWINGS, AND THE STANDARD SPECIFICATIONS FOR PUBLIC WORKS CONSTRUCTION, 1976 EDITION.
2. LOCATION OF LATERALS TO BE DETERMINED IN THE FIELD AT THE DIRECTION OF THE OWNER. AVOID CONFLICT WITH PROPOSED AND/OR EXISTING FACILITIES. (REFER TO CONST. NOTE ②)
3. CONTRACTOR IS TO VERIFY EXISTING SEWER ELEVATION PRIOR TO CONSTRUCTION.
4. THE SEWER CONTRACTOR SHALL ADJUST MANHOLES TO FINAL GRADE AFTER PAVING IS COMPLETED.
5. A PLUG SHALL BE INSTALLED AND WILL REMAIN IN PLACE WHERE THE NEW SEWER CONNECTS WITH THE EXISTING SEWER UNTIL THE NEW SEWER IS ACCEPTED BY THE CITY.
6. IT SHALL BE THE RESPONSIBILITY OF THE CONTRACTOR TO CLEAR THE RIGHT OF WAY IN ACCORDANCE WITH THE PROVISIONS OF LAW AS IT AFFECTS EACH UTILITY INCLUDING RELOCATION LINES AND APPURTENANCES AND AT NO COST TO THE CITY.
7. THE PRIVATE ENGINEER SIGNING THESE PLANS IS RESPONSIBLE FOR THE ACCURACY AND ACCEPTABILITY OF THE WORK HEREON. IN THE EVENT OF DISCREPANCIES ARISING DURING CONSTRUCTION THE PRIVATE ENGINEER SHALL BE RESPONSIBLE FOR DETERMINING AN ACCEPTABLE SOLUTION AND REVISING THE PLANS FOR APPROVAL BY THE CITY.

CONSTRUCTION NOTES

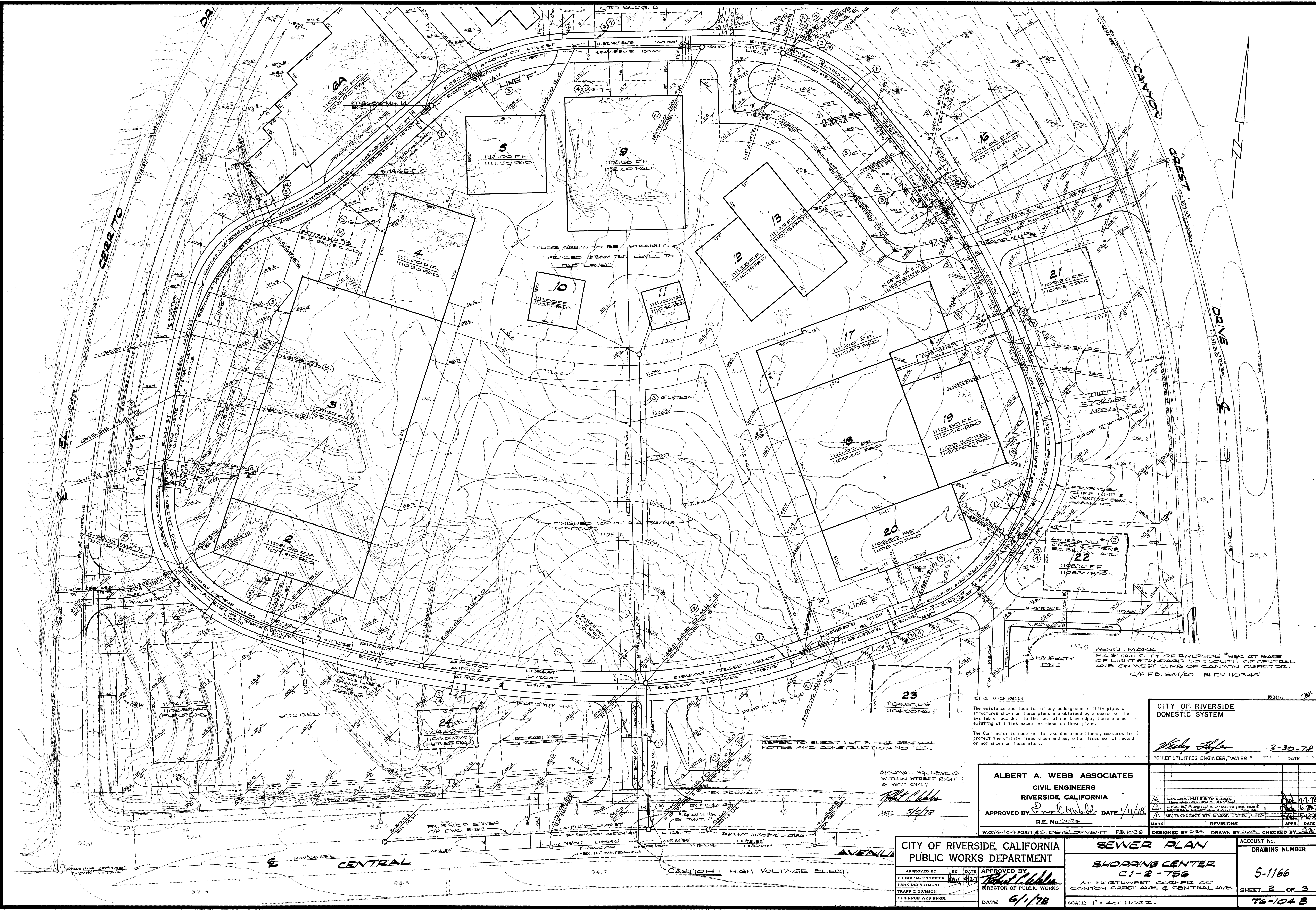
- ① CONSTRUCT 8" V.C.P. SEWER.
- ② CONSTRUCT MANHOLE PER C/R STD. DWG. 500.
- ③ CONSTRUCT SEWER LATERAL PER C/R STD. DWG. 502 (REFER TO GENERAL NOTE 2.) APPROX. LOCATION INDICATED THIS SEWER IS 4" V.C.P. UNLESS OTHERWISE NOTED. CONSTRUCT TO INVERT ELEVATION WHERE NOTED AT A POINT 5.0' OUTSIDE BUILDING. WHERE NO INVERT ELEVATION IS GIVEN CONSTRUCT LATERAL AT CONSTANT 2% SLOPE. INDICATE I.E.'S ON FINAL AS BUILT DRAWINGS.
- ④ PROVIDE PERMANENT MONUMENT FOR ALL STUB-OUTS TO FUTURE BUILDINGS. USE 6" CONCRETE CYLINDER FLUSH WITH GRADE OR MARK CONCRETE CURB - USE SYMBOL 'S'.
- ⑤ RE-CONTOUR BOTTOM OF MAN HOLE FOR FLOW.
- ⑥ ENCASE PER P.W.D. STANDARD DRAWING NO. 482 CASE IV.
- ⑦ ENCASE SEWER MAIN AND SEWER LATERAL 4.5' EACH SIDE OF WATER MAIN CROSSING WITH TYPE 'C' CONC. ENCASEMENT AS PER PUBLIC UTILITIES STD DWG. C.W.D. - 023. ENCASE WITH TYPE 'B' IF LATERAL CROSSES OVER WATER MAIN.
- ⑧ ENCASE SEWER 5' EACH SIDE OF WATER MAIN WITH TYPE 'B' CONC. & STEEL ENCASEMENT AS PER PUBLIC UTILITIES STD DWG. C.W.D. - 023.

BENCH MARK
 PK & TAG CITY OF RIVERSIDE #140C AT
 BASE OF LIGHT STANDARD, 50' ± SOUTH
 OF CENTRAL AVE. ON WEST CURB OF
 CANYON CREST DRIVE
 C/R F.B. 847/60 ELEV. 1103.45'

APPROVAL FOR SEWERS WITHIN STREET
 RIGHT OF WAY ONLY.
Robert M. White DATE 5/1/78

NOTICE TO CONTRACTOR
 The existence and location of any underground utility pipes or structures shown on these plans are obtained by a search of the available records. To the best of our knowledge, there are no existing utilities except as shown on these plans.
 The Contractor is required to take due precautionary measures to protect the utility lines shown and any other lines not of record or not shown on these plans.

CITY OF RIVERSIDE DOMESTIC SYSTEMS APPROVED BY <i>Wesley Hylen</i> DATE 3-30-78 CHIEF UTILITIES ENGINEER, WATER	ALBERT A. WEBB ASSOCIATES CIVIL ENGINEERS RIVERSIDE, CALIFORNIA APPROVED BY <i>Robert M. White</i> DATE 1/11/78 R.E. No. 9876 W.O. 76-104 FOR T&S DEVELOPMENT F.B. 1088	CITY OF RIVERSIDE, CALIFORNIA PUBLIC WORKS DEPARTMENT APPROVED BY <i>Robert M. White</i> DATE 5/1/78 PRINCIPAL ENGINEER PARK DEPARTMENT TRAFFIC DIVISION CHIEF PUB. WKS. ENGR.	SEWER PLAN SHOPPING CENTER C1-2-756 AT NORTHWEST CORNER OF CANYON CREST AVE & CENTRAL AVE. SCALE: 1" = 40' HORIZ.	ACCOUNT No. DRAWING NUMBER 5-1166
				SHEET 1 OF 3 76-104 B



NOTICE TO CONTRACTOR
 The existence and location of any underground utility pipes or structures shown on these plans are obtained by a search of the available records. To the best of our knowledge, there are no existing utilities except as shown on these plans.
 The Contractor is required to take due precautionary measures to protect the utility lines shown and any other lines not of record or not shown on these plans.

CITY OF RIVERSIDE DOMESTIC SYSTEM
Wesley Taylor 3-30-78
 CHIEF UTILITIES ENGINEER, WATER DATE

NOTE:
 REFER TO SHEET 1 OF 3 FOR GENERAL NOTES AND CONSTRUCTION NOTES.

APPROVAL FOR SEWERS WITHIN STREET RIGHT OF WAY ONLY
Albert A. Webb
 DATE 5/3/78

ALBERT A. WEBB ASSOCIATES
 CIVIL ENGINEERS
 RIVERSIDE, CALIFORNIA
 APPROVED BY *Albert A. Webb* DATE 1/1/78
 R.E. No. 2816
 WOTG-104 FORTAS DEVELOPMENT F.B. 1036

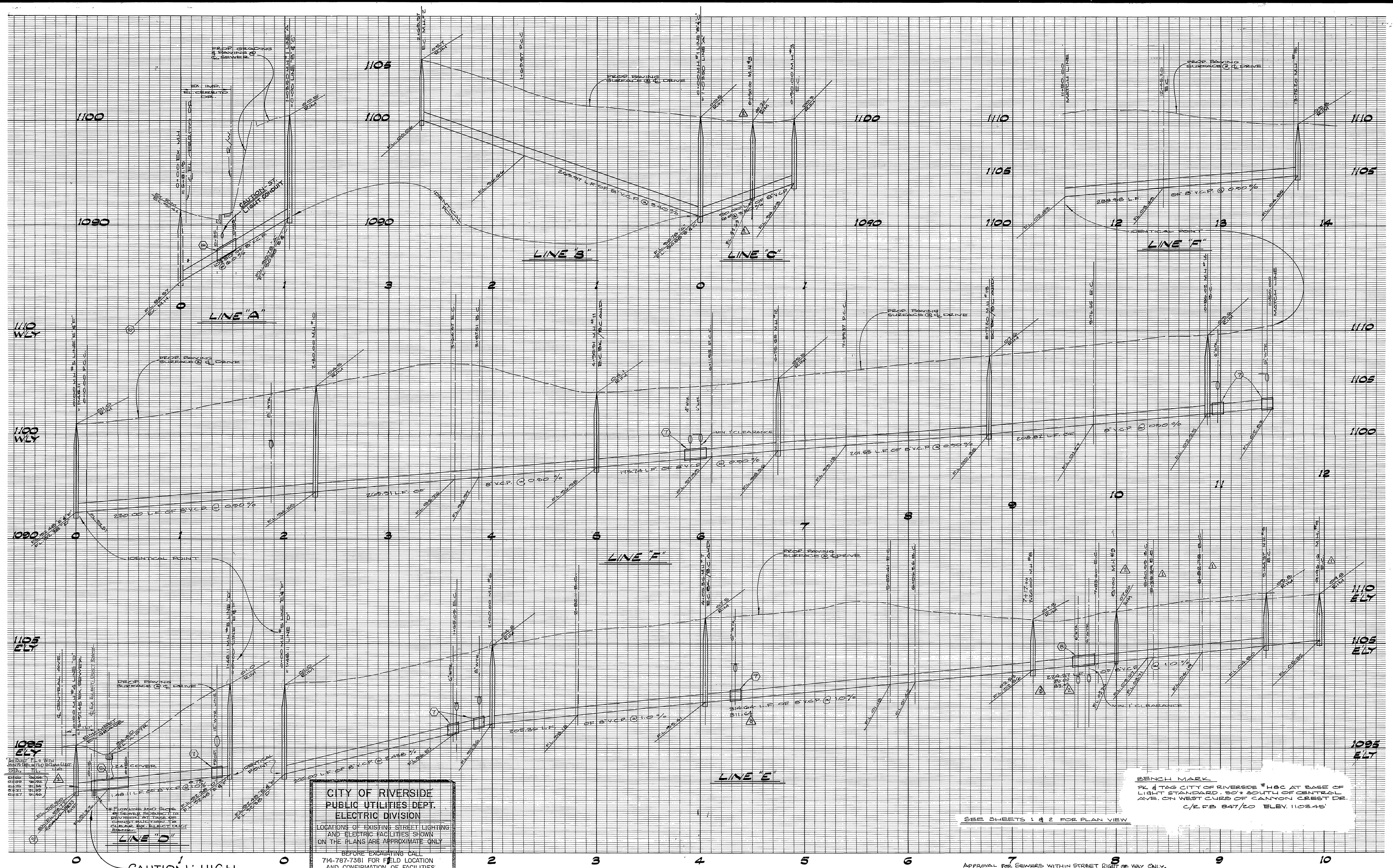
MARK	REVISIONS	APPR. DATE
1	REV. LOC. M.H. #7 TO CORRECT	1-1-78
2	REV. LOC. SANITARY SEWER LINE TO CORRECT	6-29-78
3	REV. TO CORRECT STA. ERROR - DESS, HENCO	7-12-78

CITY OF RIVERSIDE, CALIFORNIA
PUBLIC WORKS DEPARTMENT

SEWER PLAN
SHOPPING CENTER
 C1-2-756
 AT NORTHWEST CORNER OF CANYON CREST AVE. & CENTRAL AVE.
 SCALE: 1" = 40' HORIZ.

APPROVED BY *Albert A. Webb* DATE 6/1/78
 DIRECTOR OF PUBLIC WORKS

ACCOUNT NO. DRAWING NUMBER
 5-1166
 SHEET 2 OF 3
 T6-104 B



* POINTS WITH
 UNITS SHOWN IN
 FEET AND INCHES
 SHALL BE
 CONSIDERED AS
 APPROXIMATE
 UNLESS OTHERWISE
 NOTED
 1085 ELY
 1090 ELY
 1095 ELY
 1100 ELY
 1105 ELY
 1110 ELY

CAUTION: HIGH VOLTAGE, ELECT.

**CITY OF RIVERSIDE
 PUBLIC UTILITIES DEPT.
 ELECTRIC DIVISION**
 LOCATIONS OF EXISTING STREET LIGHTING
 AND ELECTRIC FACILITIES SHOWN
 ON THE PLANS ARE APPROXIMATE ONLY
 BEFORE EXCAVATING CALL
 714-787-7381 FOR FIELD LOCATION
 AND CONFIRMATION OF FACILITIES

SEE SHEETS 1 & 2 FOR PLAN VIEW

BENCH MARK
 PK # TAG CITY OF RIVERSIDE #H8C AT BASE OF
 LIGHT STANDARD 50' SOUTH OF CENTRAL
 AVE. ON WEST CURB OF CANYON CREST DE.
 C/R FB 847/60 ELEV. 110345'

CITY OF RIVERSIDE
 DOMESTIC SYSTEMS
 APPROVED BY: *Don Campbell* DATE: 4/13/78
 CHIEF UTILITIES ENGINEER, ELECTRIC

NOTICE TO CONTRACTOR
 The existence and location of any underground utility pipes or
 structures shown on these plans are obtained by a search of the
 available records. To the best of our knowledge, there are no
 existing utilities except as shown on these plans.
 The Contractor is required to take due precautionary measures to
 protect the utility lines shown and any other lines not of record
 or not shown on these plans.

CITY OF RIVERSIDE
 DOMESTIC SYSTEMS
 APPROVED BY: *Walter Hoffman* DATE: 3-30-78
 CHIEF UTILITIES ENGINEER, WATER

ALBERT A. WEBB ASSOCIATES
 CIVIL ENGINEERS
 RIVERSIDE, CALIFORNIA
 APPROVED BY: *Albert A. Webb* DATE: 4/16/78
 R.E. No. 2876
 W.O.T.G. 104 FOR T & S DEVELOPMENT F.B. 1036

REVISIONS
 1. REV. LOC. MANHOLE TO CORRECT
 TEL. UG. CONDUIT. BY DW.
 2. REV. LINE 'C' TO CORRECT
 10' AND 15' FEET AS FOUND DEVELOPMENT
 3. REV. TO CORRECT STA. EROSION BY ENV.
 4. REV. TO CORRECT STA. EROSION BY ENV.
 DESIGNED BY: *DEB* DRAWN BY: *JMB* CHECKED BY: *SSS*

CITY OF RIVERSIDE, CALIFORNIA
 PUBLIC WORKS DEPARTMENT
 APPROVED BY: *Albert A. Webb* DATE: 4/17/78
 PRINCIPAL ENGINEER
 PARK DEPARTMENT
 APPROVED BY: *Albert A. Webb* DATE: 6/1/78
 DIRECTOR OF PUBLIC WORKS
 TRAFFIC DIVISION
 CHIEF PUB. WKS. ENGR.

SEWER PROFILE
SHOPPING CENTER
C1-2-756
 AT NORTHWEST CORNER OF
 CANYON CREST AVE & CENTRAL AVE.
 SCALE: 1" = 40' HORIZ., 1" = 4' VERT.

ACCOUNT NO.
 DRAWING NUMBER
 5-1166
 SHEET 3 OF 3
 76-104B