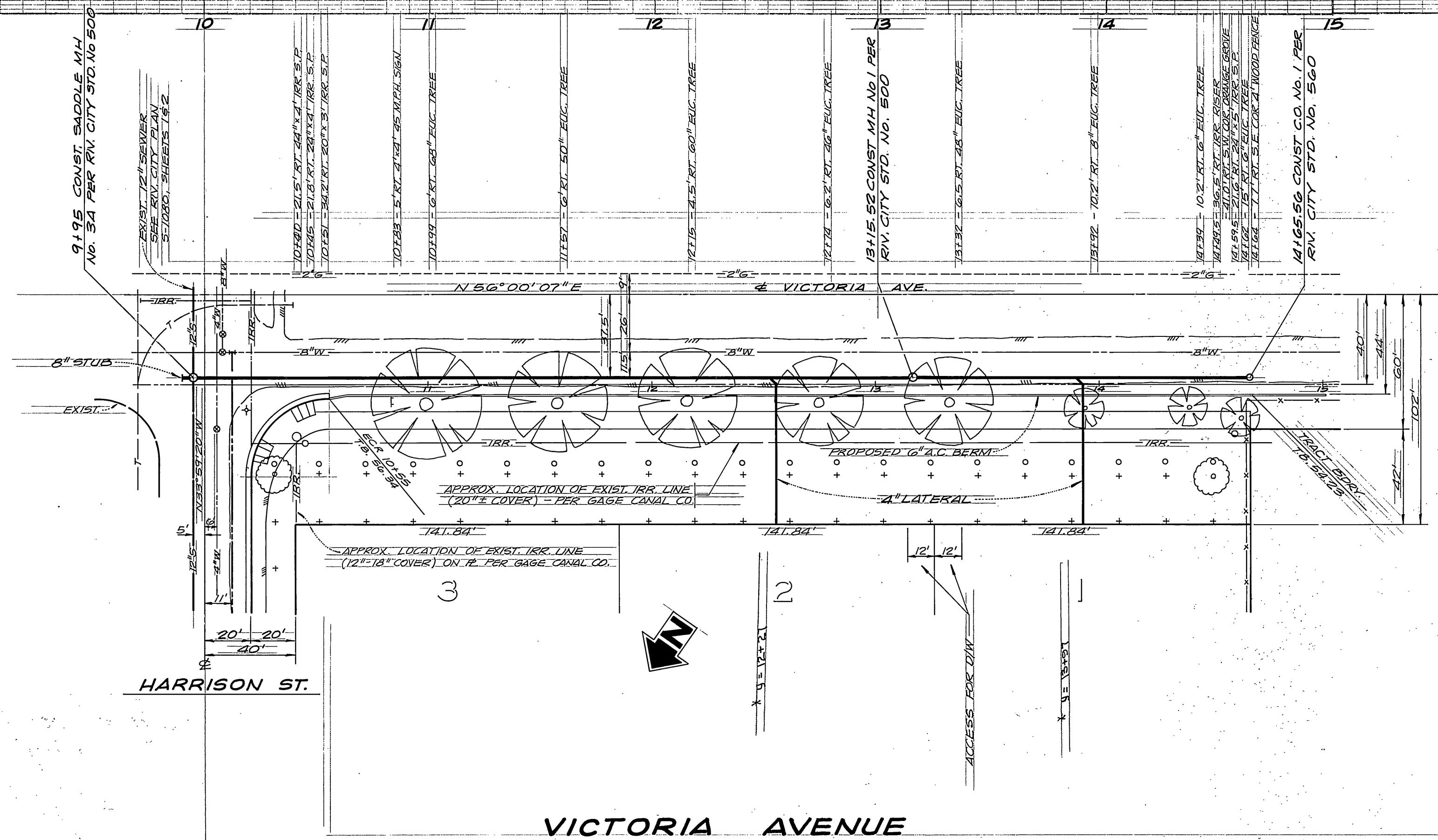


850

840



NOTES

1. Location of laterals to be determined in the field at the direction of the owner. Avoid conflict with proposed and/or existing facilities.
2. Contractor is to verify existing sewer elevation prior to construction.
3. The sewer contractor shall adjust manholes to final grade after paving is completed.
4. A plug shall be installed and will remain in place where the new sewer connects with the existing sewer until the new sewer is accepted by the city.
5. It shall be the responsibility of the contractor to clear the right of way in accordance with the provisions of law as it affects each utility including irrigation lines and appurtenances and at no cost to the city.
6. Construction shall be in accordance with the City of Riverside, Department of Public Works, Standard Drawings, and the Standard Specifications for Public Works Construction, 1976 Edition.
7. The private engineer signing these plans is responsible for assuring the accuracy and acceptability of the work hereon. In the event of discrepancies arising during construction as a result of errors or omissions, the private engineer shall be responsible for determining an acceptable solution and revising the plans for approval by the city.

BENCH MARK

City of Riv. E4-6 1/2" I.R. in well
4' N'ly of int. Harrison & Victoria
EL. 856.399

**CITY OF RIVERSIDE
DOMESTIC SYSTEM
GAGE CANAL**

BY: *Wally Apple*
CHIEF UTILITIES ENGINEER, WATER

DATE: 5-8-78

NESTE, BRUDIN & STONE
INCORPORATED
CIVIL ENGINEERS

SAN BERNARDINO HERMET ESCONDIDO

APPROVED BY: *Wally Apple*
REGISTERED CIVIL ENGINEER NO. 40451

DATE: MAY 5, 1978

MARK	REVISIONS	APPR. DATE
DESIGNED BY	DRAWN BY C.L.A.	CHECKED BY

**CITY OF RIVERSIDE, CALIFORNIA
DEPARTMENT OF PUBLIC WORKS**

APPROVED BY: *Wally Apple*
PRINCIPAL ENGINEER
PARK DEPARTMENT
TRAFFIC DIVISION
CHIEF P. W. ENGR.

DATE: 5/24/78

SEWER PLAN AND PROFILE

TRACT 9871
VICTORIA AVENUE

PROJECT NO. 5-1167
SHEET 1 OF 1
FILE NO.

HORIZ. SCALE: 1" = 40'
VERT. SCALE: 1" = 4'

INDEXED PER

H73.105-012