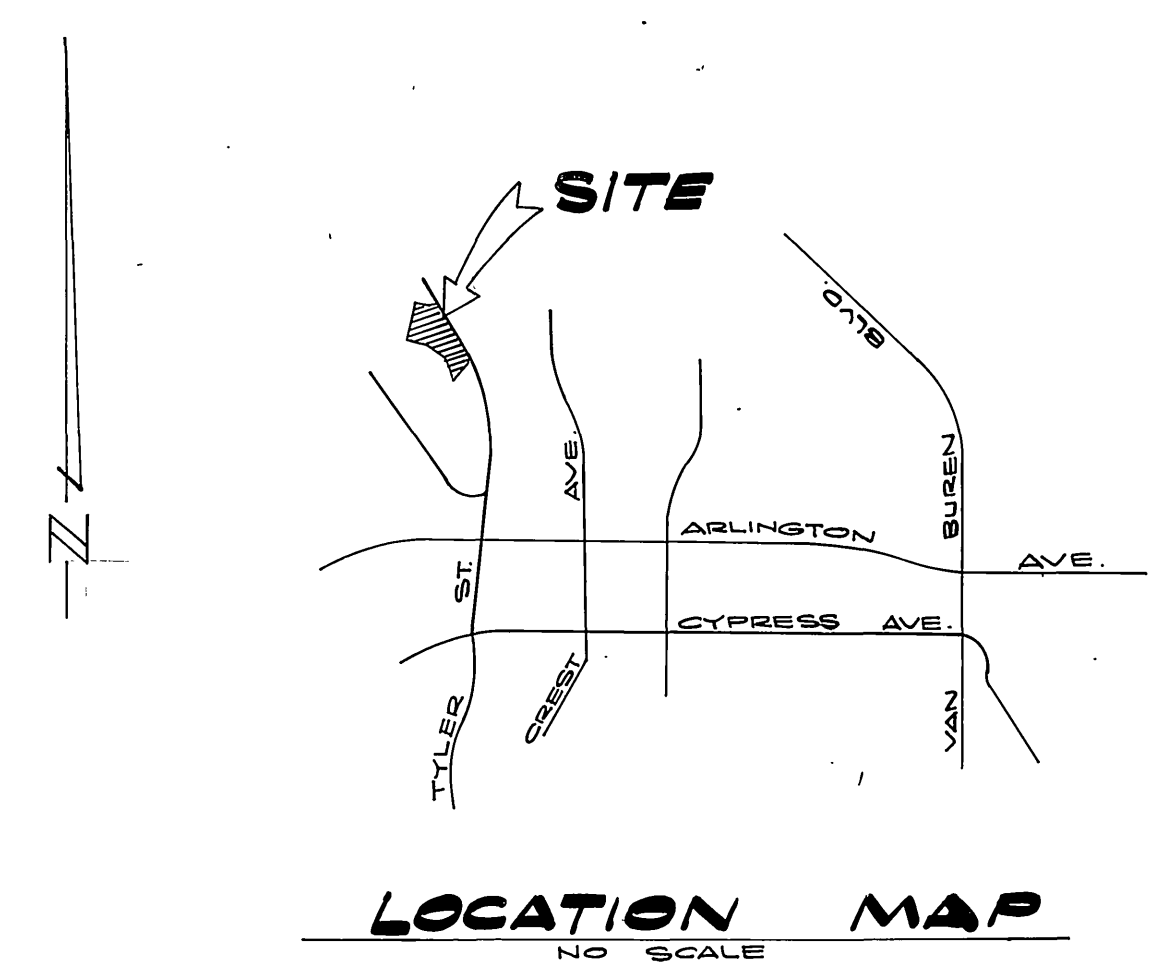


INDEX MAP
NO SCALE



GENERAL NOTES:

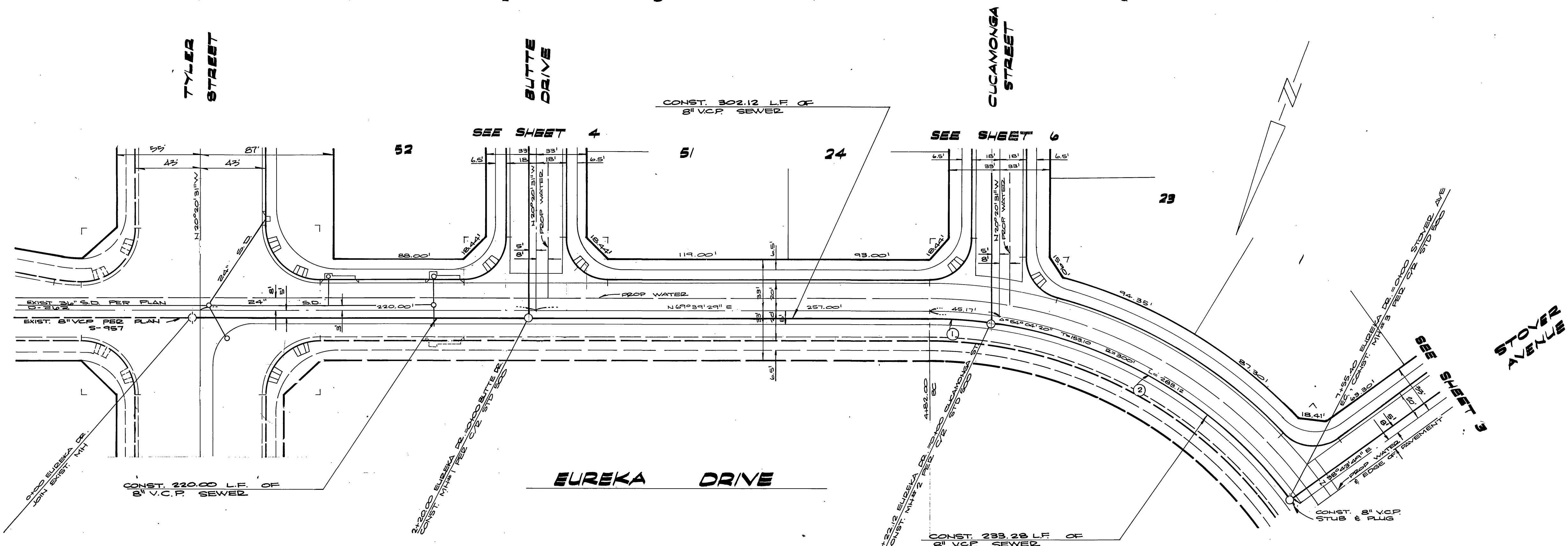
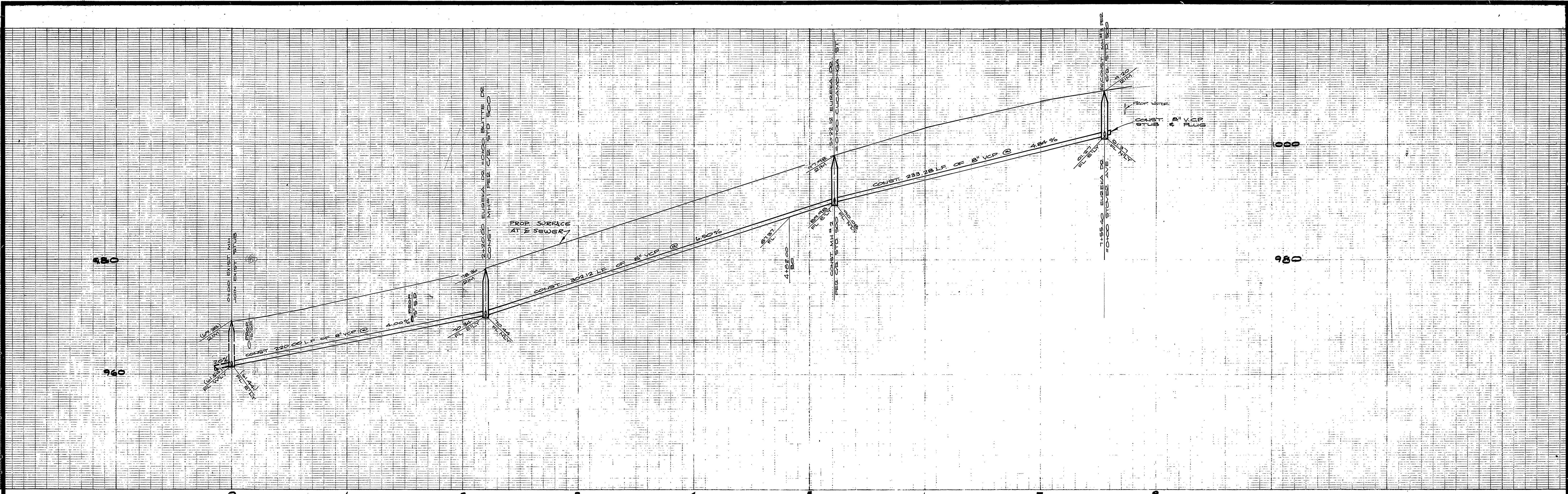
1. THE PRIVATE ENGINEER SIGNING THESE PLANS IS RESPONSIBLE FOR THE ACCURACY AND THE ACCEPTABILITY OF THE WORK HEREON. IN THE EVENT OF DISCREPANCIES ARISING DURING CONSTRUCTION, THE PRIVATE ENGINEER SHALL BE RESPONSIBLE FOR AN ACCEPTABLE SOLUTION, AND REVISING THE PLANS FOR APPROVAL BY THE CITY.
2. CONSTRUCTION SHALL BE IN ACCORDANCE WITH THE STANDARD SPECIFICATIONS FOR PUBLIC WORKS CONSTRUCTION 1976 EDITION AND THE CITY OF RIVERSIDE STANDARD DRAWINGS.
3. IT SHALL BE THE RESPONSIBILITY OF THE CONTRACTOR TO CLEAR THE RIGHT OF WAY IN ACCORDANCE WITH THE PROVISIONS OF LAW AS IT AFFECTS EACH UTILITY INCLUDING IRRIGATION LINES AND APPURTENANCES AND AT NO COST TO THE CITY.
4. PIPE SHALL BE BEDDED PER CASE 1, STANDARD DRAWING NO 452, UNLESS OTHERWISE SPECIFIED ON THE PLANS.
5. LOCATION OF WYES AND LATERALS TO BE DETERMINED IN THE FIELD AT THE DIRECTION OF THE OWNER.
6. ALL STUBS AND LATERALS ARE TO BE CONSTRUCTED IN ACCORDANCE WITH STANDARD DRAWING NO. 562. STUBS SHALL BE PLUGGED AND CAPPED.
7. MANHOLE FRAMES AND COVERS TO BE SET AS NOTED IN PROFILES BY SEWER CONTRACTOR AFTER FINAL PAVING OF STREETS.
8. LATERALS ARE TO BE 4" V.C.P. AND EXTENDED TO PROPERTY LINE.
9. PRIOR TO CONSTRUCTION OF SEWER, CONTRACTOR IS TO EXPOSE THE EXISTING SEWER AND CONTACT THE ENGINEER FOR VERIFICATION OF EXISTING LOCATION & ELEVATION.
10. PLUGS SHALL BE INSTALLED AND WILL REMAIN IN PLACE WHERE THE SEWER CONNECTS WITH THE EXISTING SEWER UNTIL SUCH TIME AS THE NEW SEWER IS ACCEPTED BY THE CITY.

NOTICE TO CONTRACTOR:

THE EXISTENCE AND LOCATION OF UNDERGROUND UTILITY PIPES OR STRUCTURES SHOWN ON THESE PLANS ARE OBTAINED BY A SEARCH OF THE AVAILABLE RECORDS TO THE BEST OF OUR KNOWLEDGE THERE ARE NO EXISTING UTILITIES EXCEPT AS SHOWN ON THESE PLANS.

THE CONTRACTOR IS REQUIRED TO TAKE DUE PRECAUTIONARY MEASURES TO PROTECT THE UTILITY LINES SHOWN, AND ANY OTHER LINES NOT OF RECORD OR NOT SHOWN ON THESE PLANS.

ALBERT A. WEBB ASSOCIATES CIVIL ENGINEERS RIVERSIDE, CALIFORNIA APPROVED BY: <i>[Signature]</i> DATE 8-1-77 R.E. No. 21884		CITY OF RIVERSIDE, CALIFORNIA PUBLIC WORKS DEPARTMENT APPROVED BY: <i>[Signature]</i> DATE 4-13-78 CHIEF PUB. WKS. ENGR.		ACCOUNT No. DRAWING NUMBER S-1171 SHEET 1 OF 9 77-303
CITY OF RIVERSIDE DOMESTIC SYSTEM CHIEF UTILITIES ENGINEER, WATER DATE 10-5-77		W.O. 71-98 FOR ANDEN CORP. F.B. 1022 DESIGNED BY MC DRAWN BY MPH CHECKED BY		'AS BUILT' 10/26/79 B.P. SEWER PLAN & PROFILE TRACT NO. 9418 INDEX SCALE: AS SHOWN



CURVE DATA				
NO	Δ	B	L	T
1	74°13'	295.00	40.12	225.09
2	45°18'24"	295.00	233.28	123.12

NOTE:
SEE SHEET #1 FOR GENERAL NOTES.

BENCH MARK:
TOP OF BOLT ON SE CORNER OF SIGNAL BASE @ THE NW CORNER OF ARLINGTON & TYLER PER C/R F.B. 996/14 ELEV 781.486

CITY OF RIVERSIDE
DOMESTIC SYSTEM
Wally Hylan 10-5-77
CHIEF UTILITIES ENGINEER, WATER

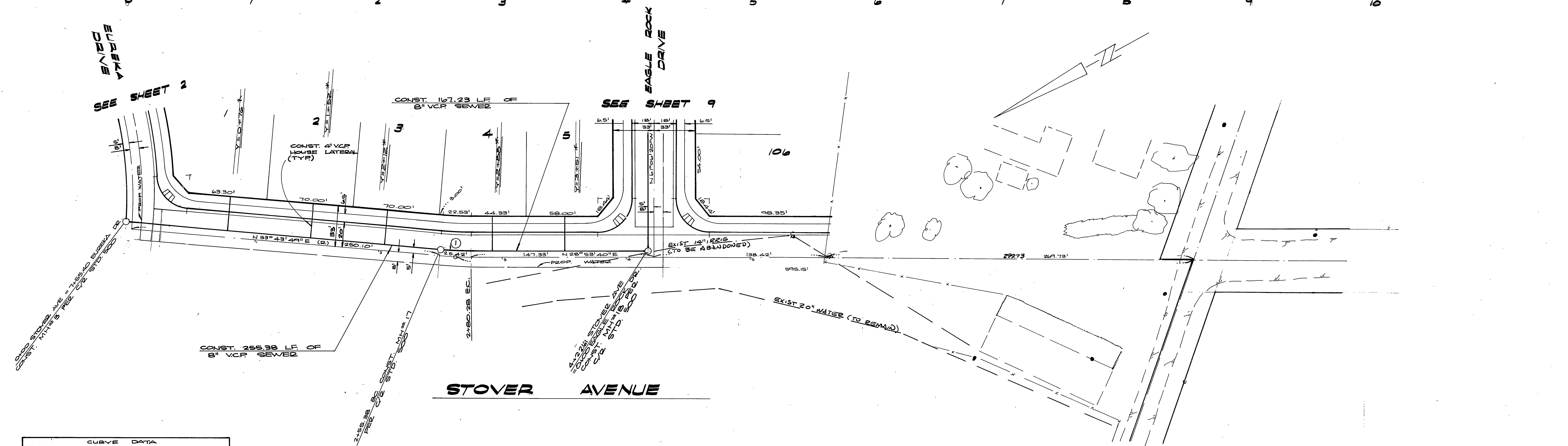
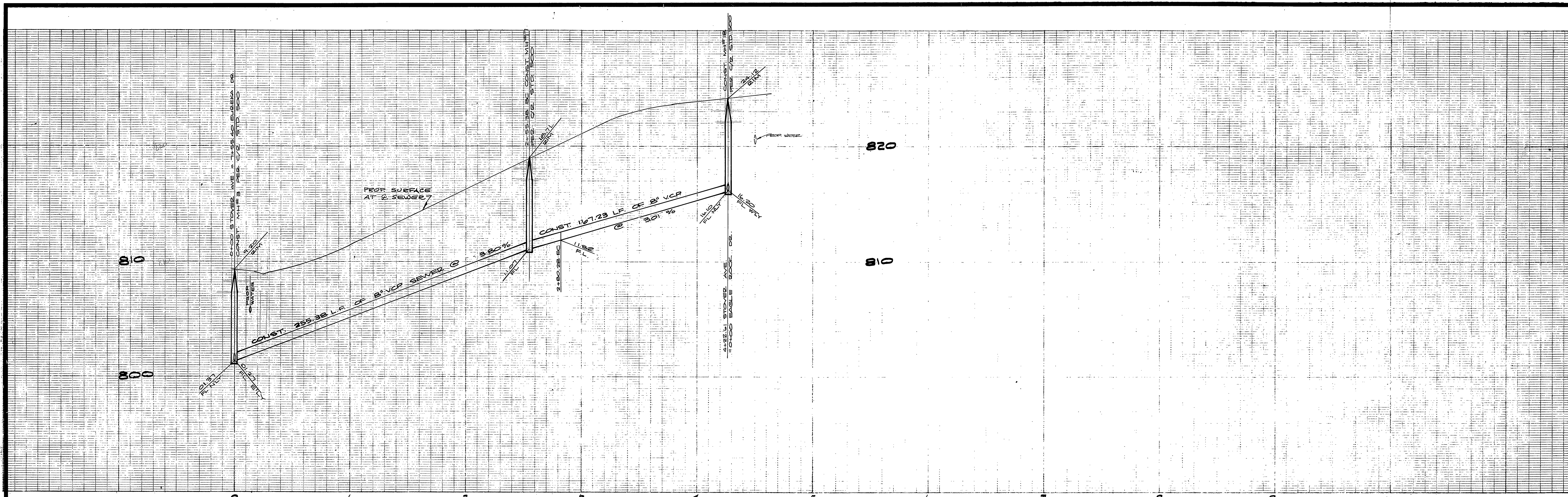
ALBERT A. WEBB ASSOCIATES
CIVIL ENGINEERS
RIVERSIDE, CALIFORNIA
APPROVED BY *[Signature]* DATE 8-18-77
R.E. No. 21884

MARK	REVISIONS	APPR. DATE

CITY OF RIVERSIDE, CALIFORNIA
PUBLIC WORKS DEPARTMENT
APPROVED BY *[Signature]* DATE 9/13/78
PRINCIPAL ENGINEER
PARK DEPARTMENT
TRAFFIC DIVISION
CHIEF PUB. WKS. ENGR.

SEWER PLAN & PROFILE
TRACT NO. 9418
EUREKA DRIVE
SCALE: HORIZ. 1"=40' VERT. 1"=8'

ACCOUNT No. 77-38
DRAWING NUMBER
S-1171
SHEET 2 OF 9
77-38 B

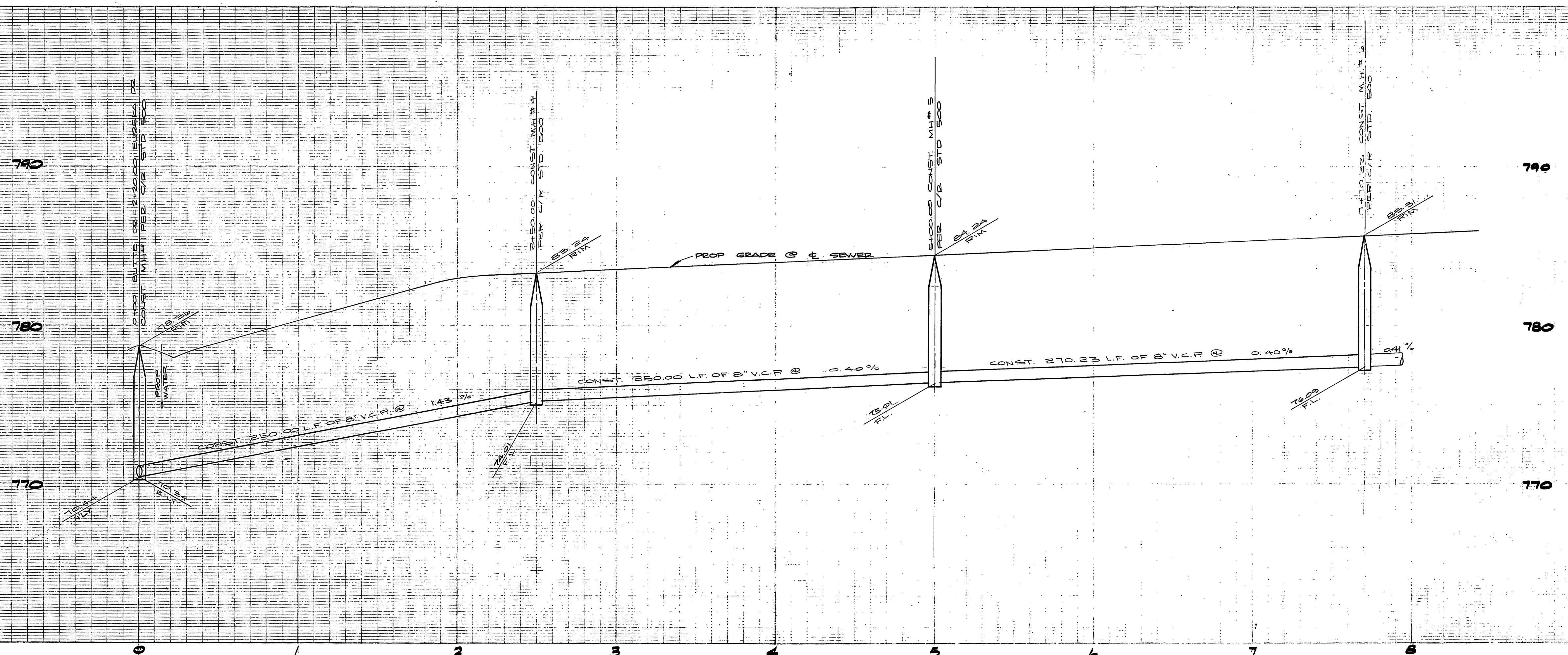


CURVE DATA			
NO	Δ	D	T
1	4500'	295	12.46

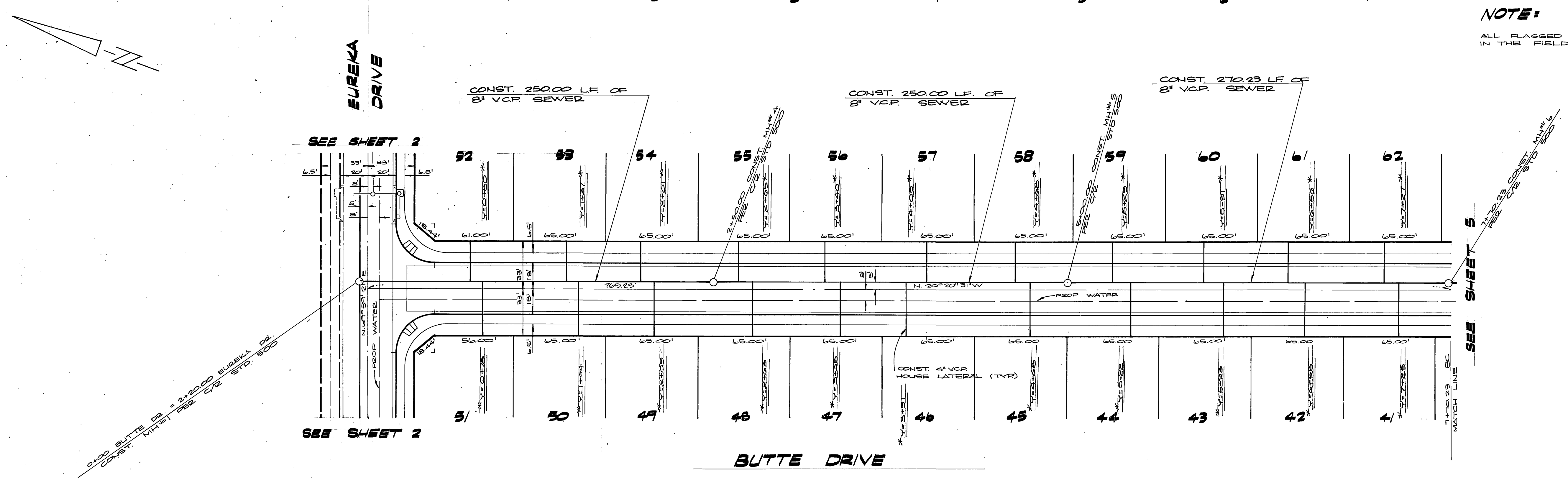
NOTE:
SEE SHEET #1 FOR GENERAL NOTES.

BENCH MARK:
TOP OF BOLT ON SE CORNER OF SIGNAL BASE @ THE NW CORNER OF ARLINGTON & TYLER PER C/R F.B. 996/14 ELEV 781.48'

<p>ALBERT A. WEBB ASSOCIATES CIVIL ENGINEERS RIVERSIDE, CALIFORNIA</p> <p>APPROVED BY: <i>[Signature]</i> DATE: 8-18-77 R.E. No. 21887</p>	<p>CITY OF RIVERSIDE, CALIFORNIA PUBLIC WORKS DEPARTMENT</p> <p>APPROVED BY: <i>[Signature]</i> DATE: 4/13/78 DIRECTOR OF PUBLIC WORKS</p>	<p>SEWER PLAN & PROFILE</p> <p>TRACT NO. 9418 STOVER AVENUE</p>	<p>ACCOUNT No. 77-388 DRAWING NUMBER S-1171</p> <p>SHEET 3 OF 9 77-388</p>
<p>CITY OF RIVERSIDE DOMESTIC SYSTEM CHIEF UTILITIES ENGINEER (WATER) DATE: 10-5-77 W.D. 77-388 FOR ANDERSON CORP. F.B. 1042</p>		<p>SCALE: HORIZ 1" = 40' VERT 1" = 4'</p>	



NOTE:
ALL FLAGGED ELEVATIONS TO BE STAKED IN THE FIELD BY THE ENGINEERING.



NOTE:
SEE SHEET #1 FOR GENERAL NOTES.

BENCH MARK:
TOP OF BOLT ON SE CORNER OF SIGNAL BASE @ THE N.W. CORNER OF ARLINGTON & TYLER PER C/R F.B. 996/14. ELEV. 781.484

CITY OF RIVERSIDE
DOMESTIC SYSTEM
Chief Utilities Engineer, Water Dept.
10-5-77

ALBERT A. WEBB ASSOCIATES
CIVIL ENGINEERS
RIVERSIDE, CALIFORNIA
APPROVED BY: [Signature] DATE 8-18-77
R.E. No. 2884
W.O. 77-38 FOR: ANDEN CORP. F.B. 1042
DESIGNED BY: [Signature] DRAWN BY: MPH. CHECKED BY: [Signature]

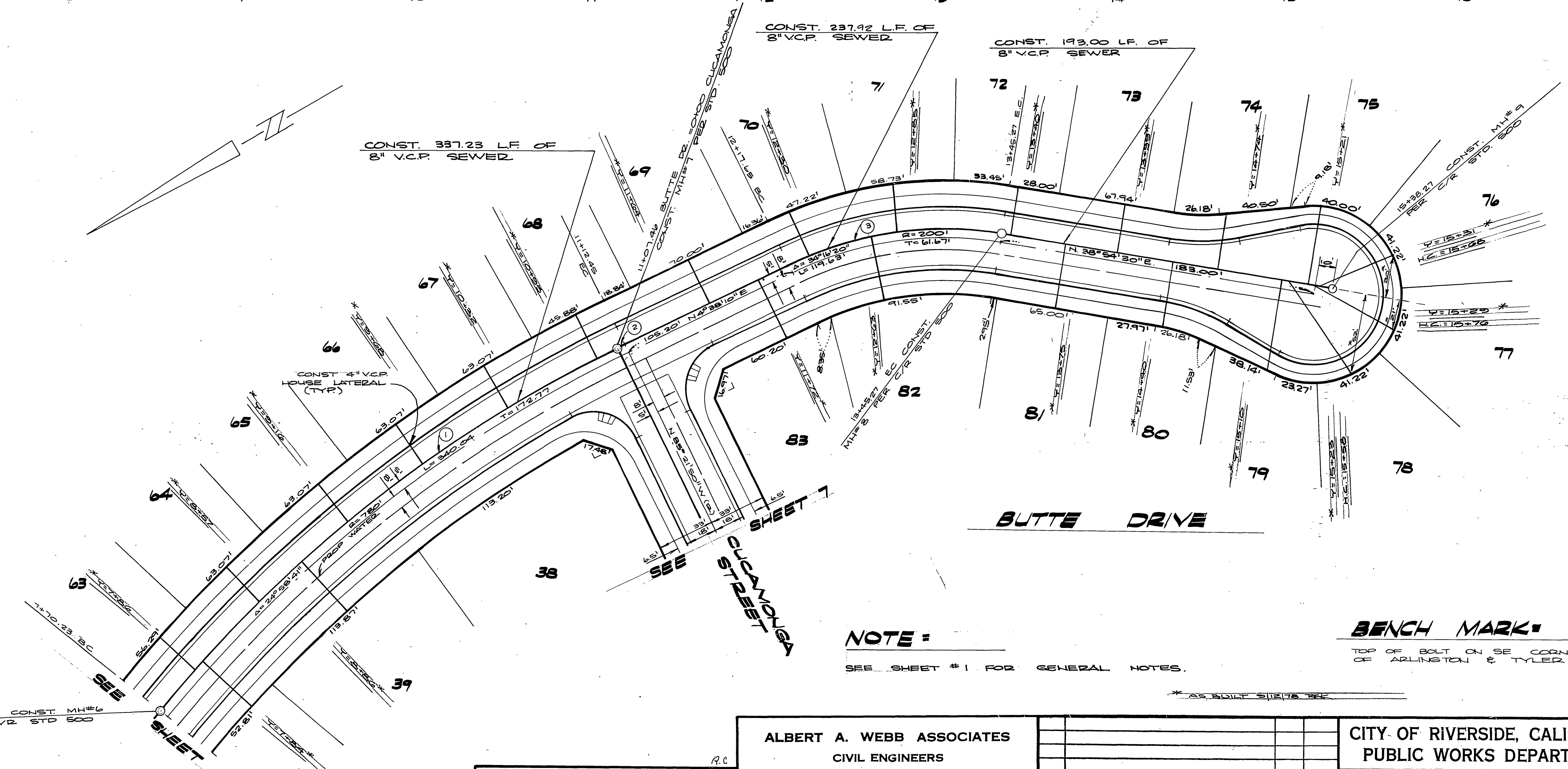
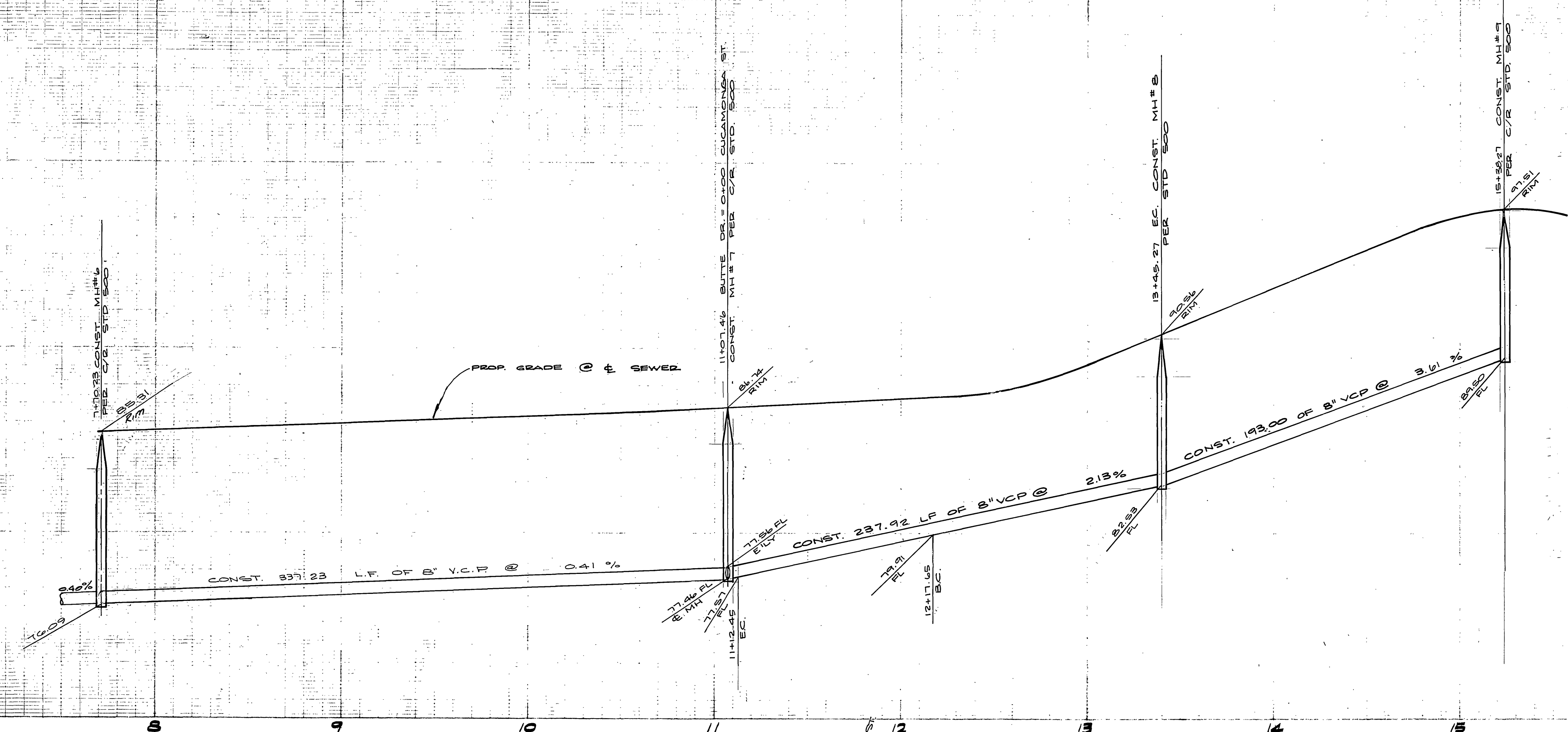
CITY OF RIVERSIDE, CALIFORNIA
PUBLIC WORKS DEPARTMENT
APPROVED BY: [Signature] DATE 9/13/77
PRINCIPAL ENGINEER
PARK DEPARTMENT
TRAFFIC DIVISION
CHIEF PUB. WKS. ENGR. [Signature]

SEWER PLAN & PROFILE
TRACT NO. 9418
BUTTE DRIVE
SCALE: HORIZ. 1" = 40' VERT. 1" = 4'

ACCOUNT No. 77-38
DRAWING NUMBER
S-1171
SHEET 4 OF 9
77-38 B

800
790
780

800
790
780



CURVE DATA				
NO	Δ	R	L	T
1	24°34'50"	785	337.23	171.25
2	0°21'51"	785	4.99	2.49
3	34°16'20"	205	122.62	63.21

NOTE:
SEE SHEET #1 FOR GENERAL NOTES.

BENCH MARK:
TOP OF BOLT ON SE CORNER OF SIGNAL BASE @ THE NW CORNER OF ARLINGTON & TYLER PER C/R F.B. 9/26/14 ELEV 761.98

7+70.23 CONST. MH#6 PER C/R STD 500

SHEET 4

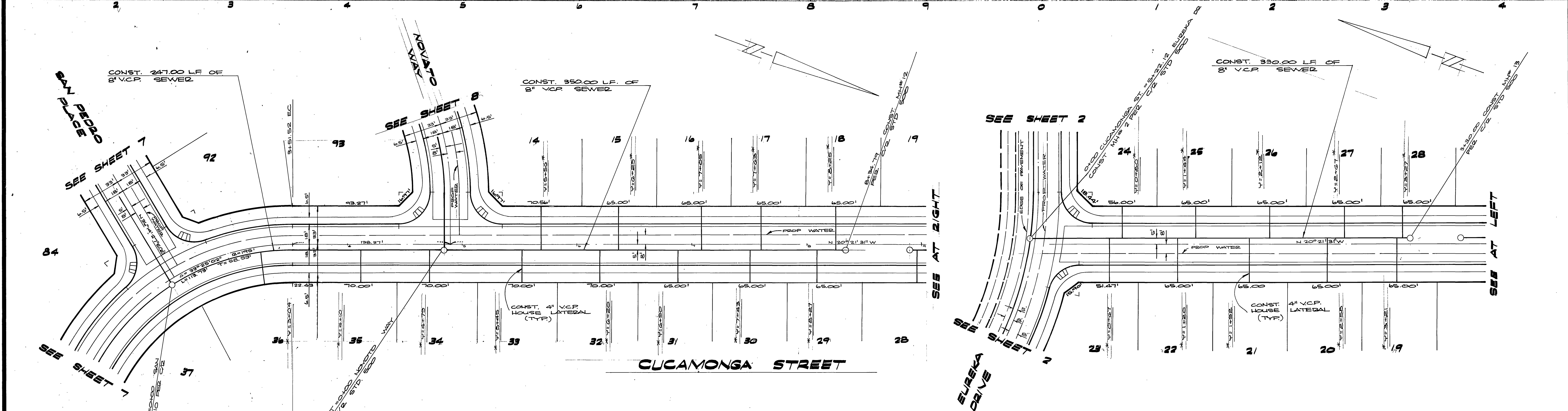
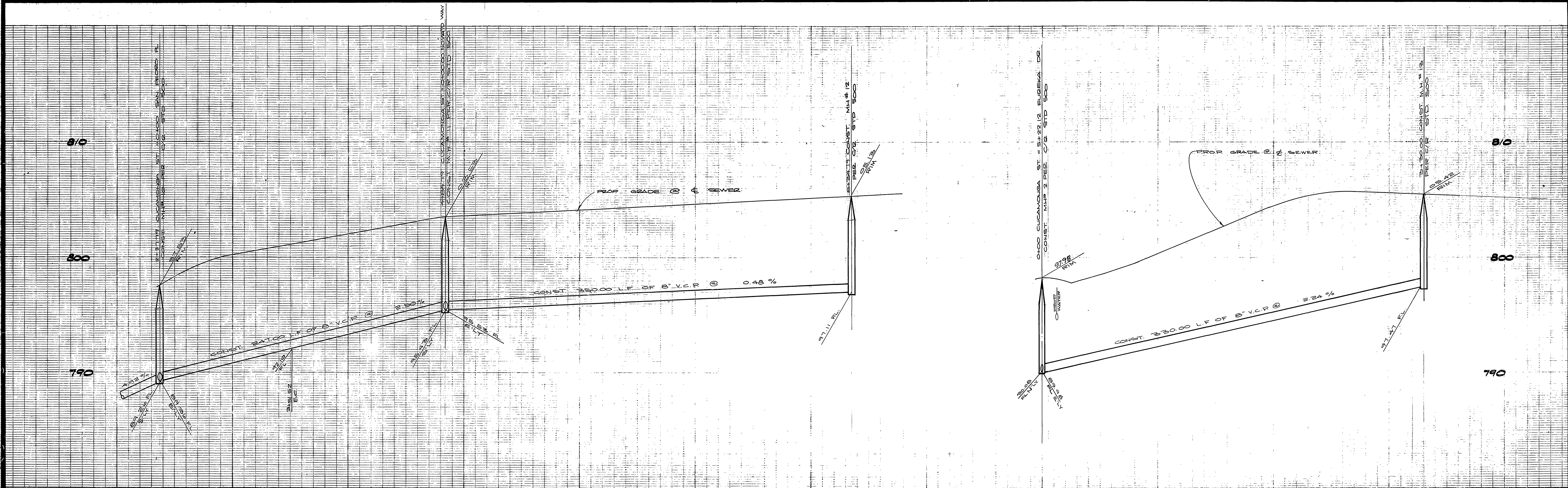
ALBERT A. WEBB ASSOCIATES
CIVIL ENGINEERS
RIVERSIDE, CALIFORNIA
APPROVED BY: *[Signature]* DATE: 8/18/77
R.E. No. 21884

CITY OF RIVERSIDE
DOMESTIC SYSTEM
[Signature] 10-577
CHIEF UTILITIES ENGINEER, WATER

CITY OF RIVERSIDE, CALIFORNIA
PUBLIC WORKS DEPARTMENT
APPROVED BY: *[Signature]* DATE: 9/13/78
PRINCIPAL ENGINEER
PARK DEPARTMENT
TRAFFIC DIVISION
CHIEF PUB. WKS. ENGR.

SEWER PLAN & PROFILE
TRACT NO. 9418
BUTTE DRIVE
SCALE: HORIZ 1"=40' VERT 1"=4'

ACCOUNT No. 77-38
DRAWING NUMBER
S-1171
SHEET 5 OF 9
77-38 B



NOTE :

SEE SHEET #1 FOR GENERAL NOTES.

BENCH MARK :

TOP OF BOLT ON SE CORNER OF SIGNAL BASE @ THE NW CORNER OF IARLINGTON & TYLER PER. C/R F.B. 996/14 ELEV. 781.986

CITY OF RIVERSIDE
DOMESTIC SYSTEM
Walter Jaffe 10-5-77
CHIEF UTILITIES ENGINEER, WATER DATE

ALBERT A. WEBB ASSOCIATES
CIVIL ENGINEERS
RIVERSIDE, CALIFORNIA
APPROVED BY *[Signature]* DATE 2/18/77
R.E. No. 21884

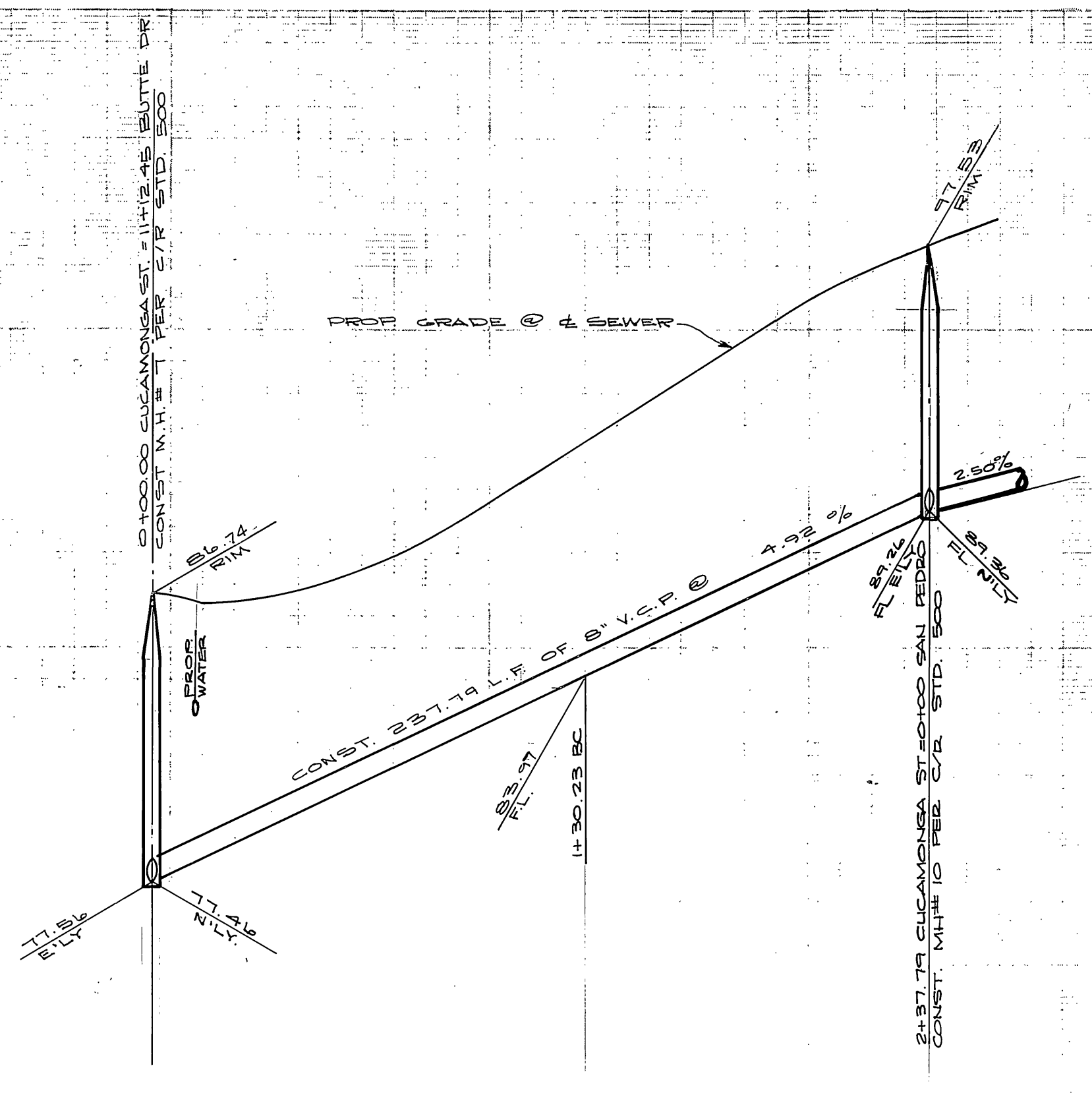
MARK	REVISIONS	APPR.	DATE

CITY OF RIVERSIDE, CALIFORNIA
PUBLIC WORKS DEPARTMENT
APPROVED BY *[Signature]* DATE 4/13/78
PRINCIPAL ENGINEER
PARK DEPARTMENT
TRAFFIC DIVISION
CHIEF PUB. WKS. ENGR. DATE 4/13/78

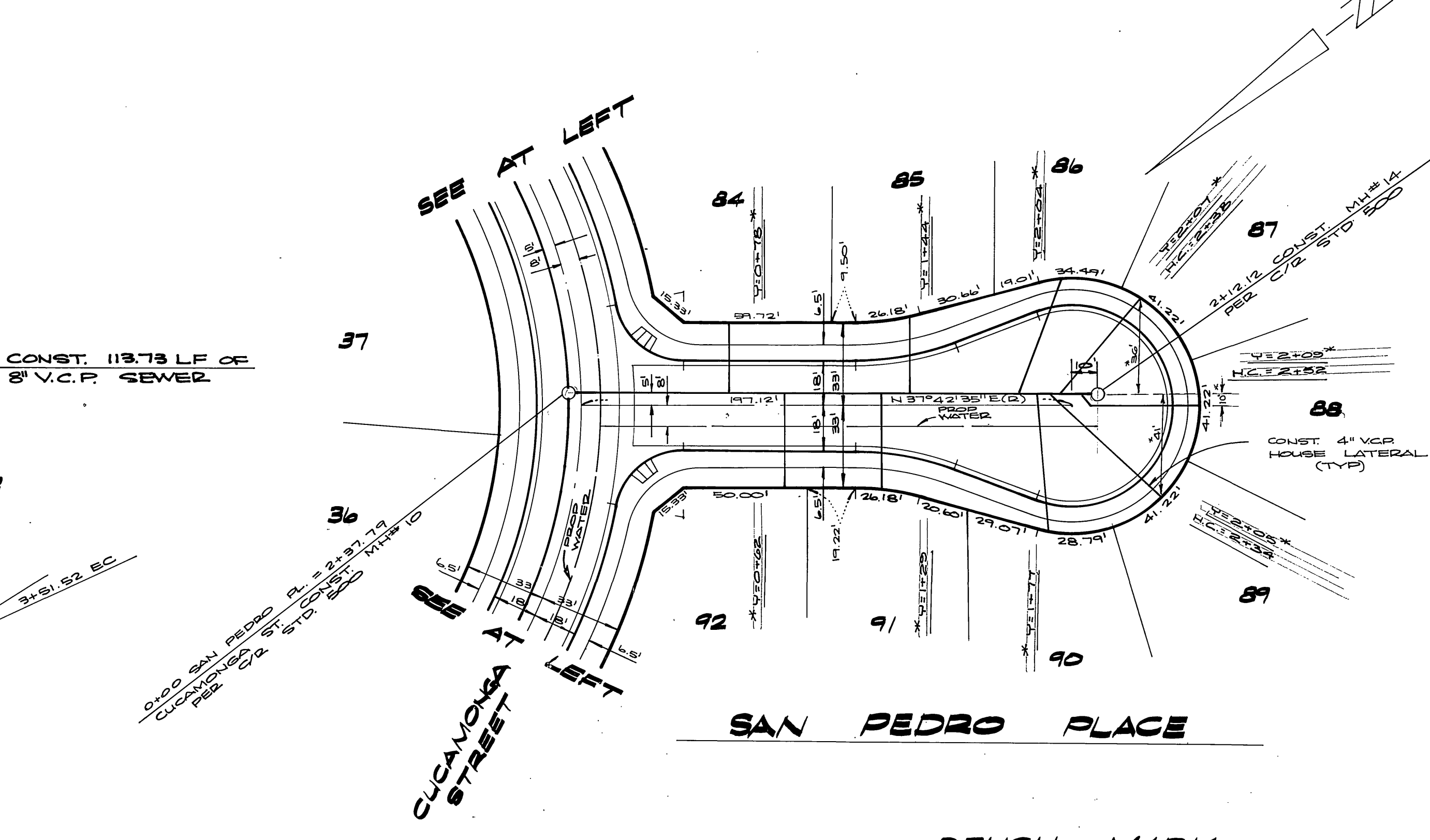
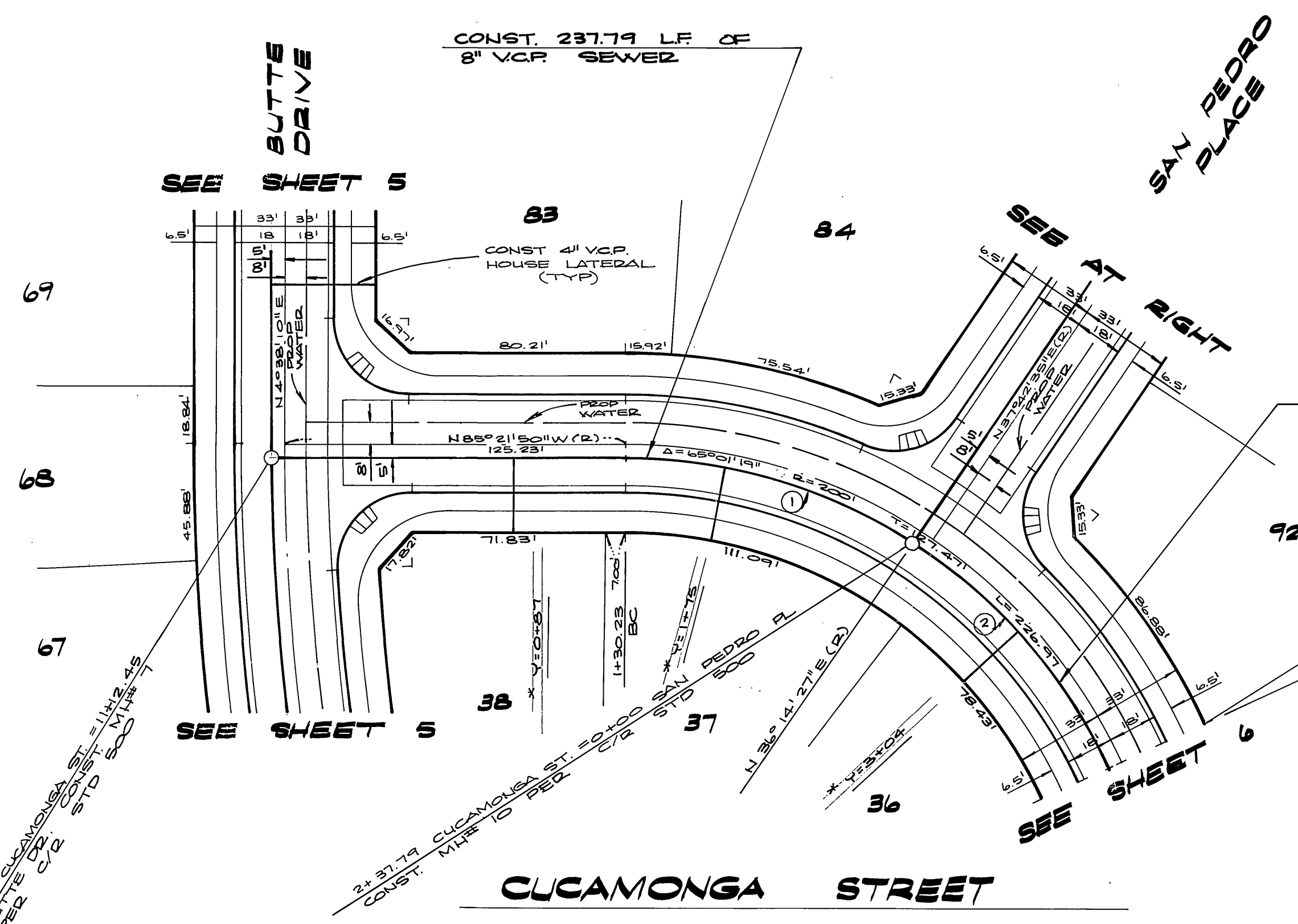
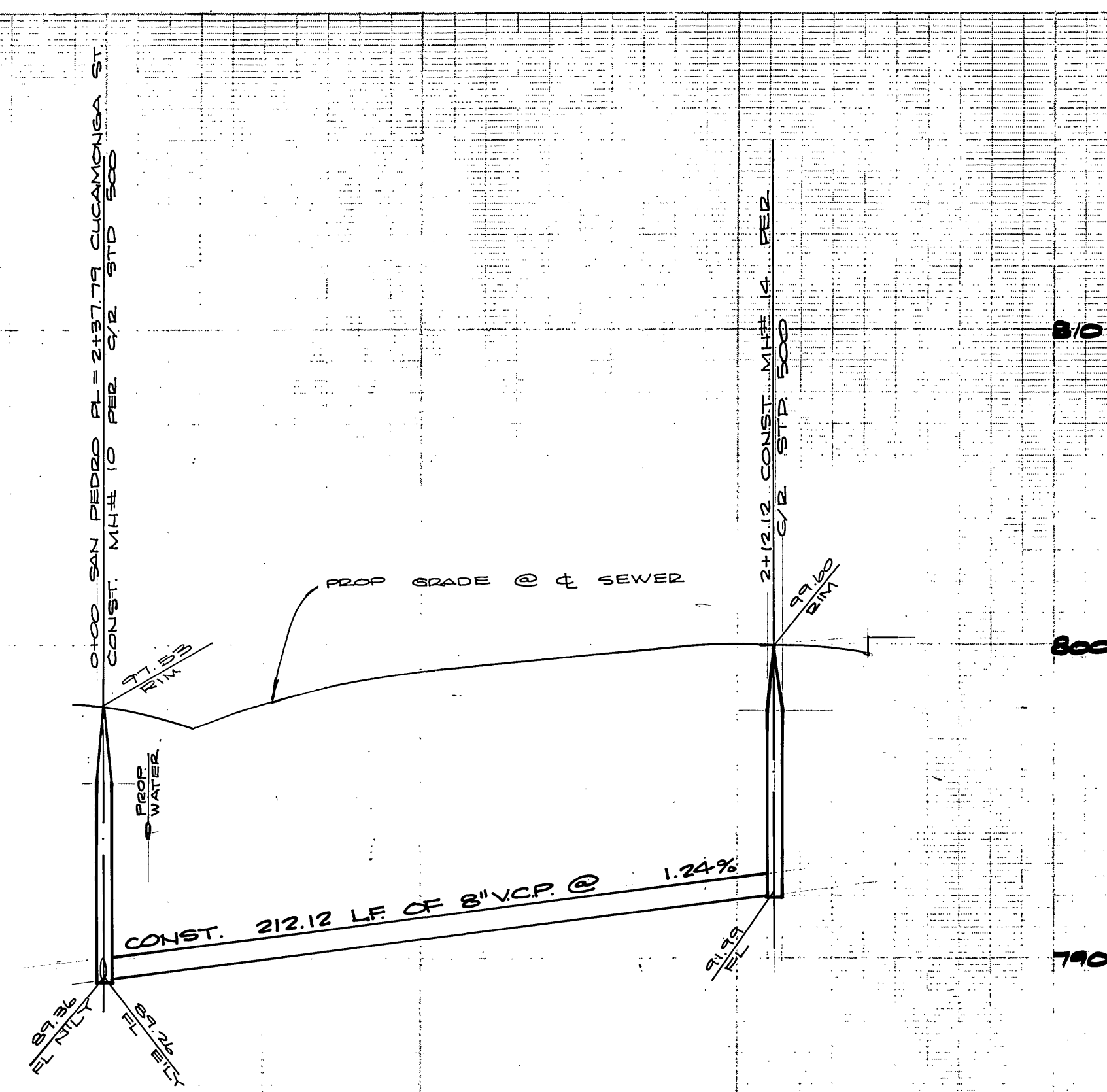
SEWER PLAN & PROFILE
TRACT NO. 9418
CUCAMONGA STREET
SCALE: HORIZ. 1"=40' VERT. 1"=4'

ACCOUNT No. 77-38
DRAWING NUMBER
S-1171
SHEET 6 OF 9
77-388

795
785
775



810
800
790



CURVE DATA				
NO	Δ	R	L	T
1	87°54'17"	195	107.54	55.19
2	33°29'02"	195	113.73	58.53

NOTE:
SEE SHEET #1 FOR GENERAL NOTES.

BENCH MARK:
TOP OF BOLT ON SE CORNER OF SIGNAL BASE @ THE NW CORNER OF ARLINGTON & TYLER PER PER F.B. 796/14. ELEV. 781.486

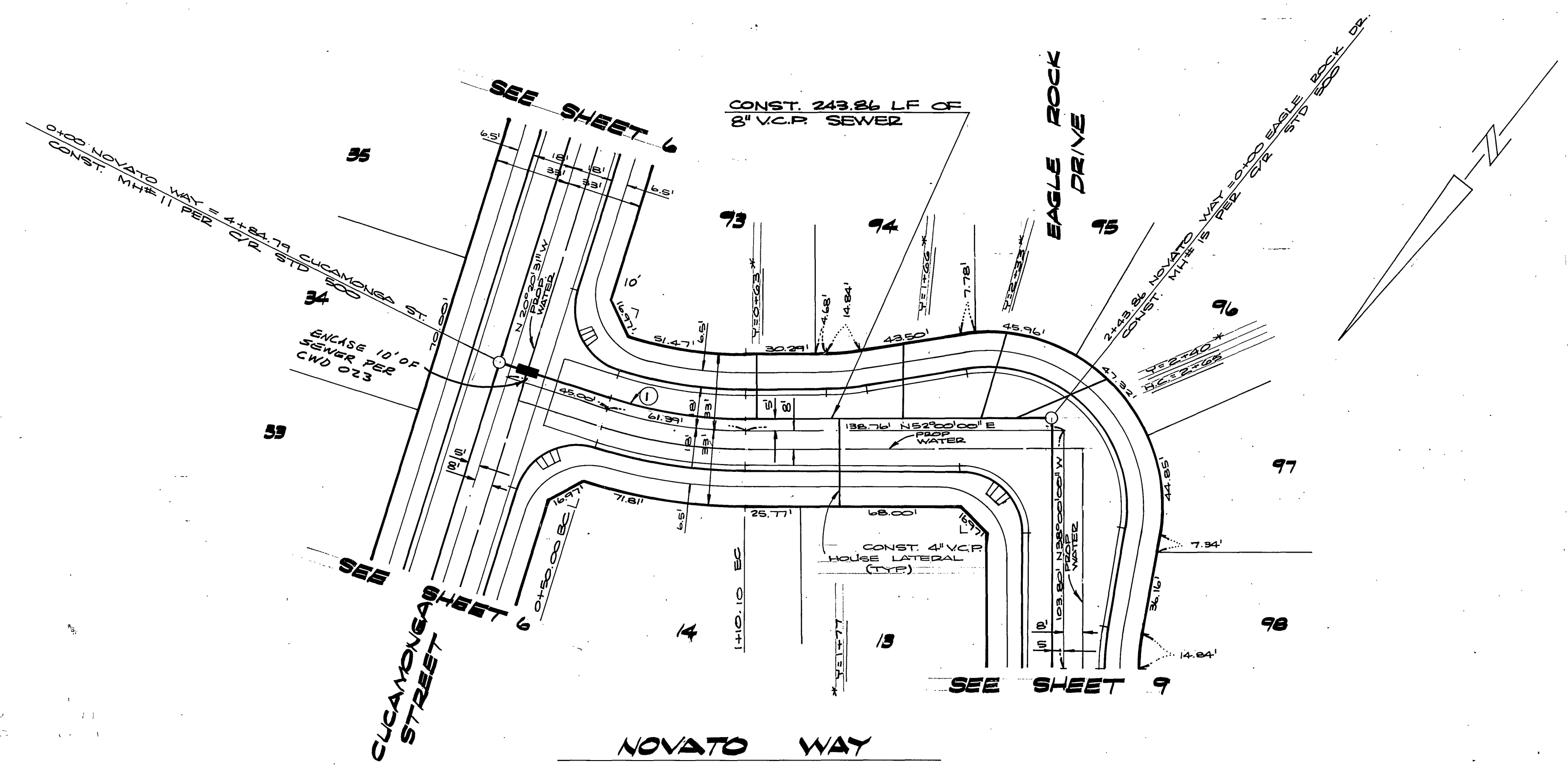
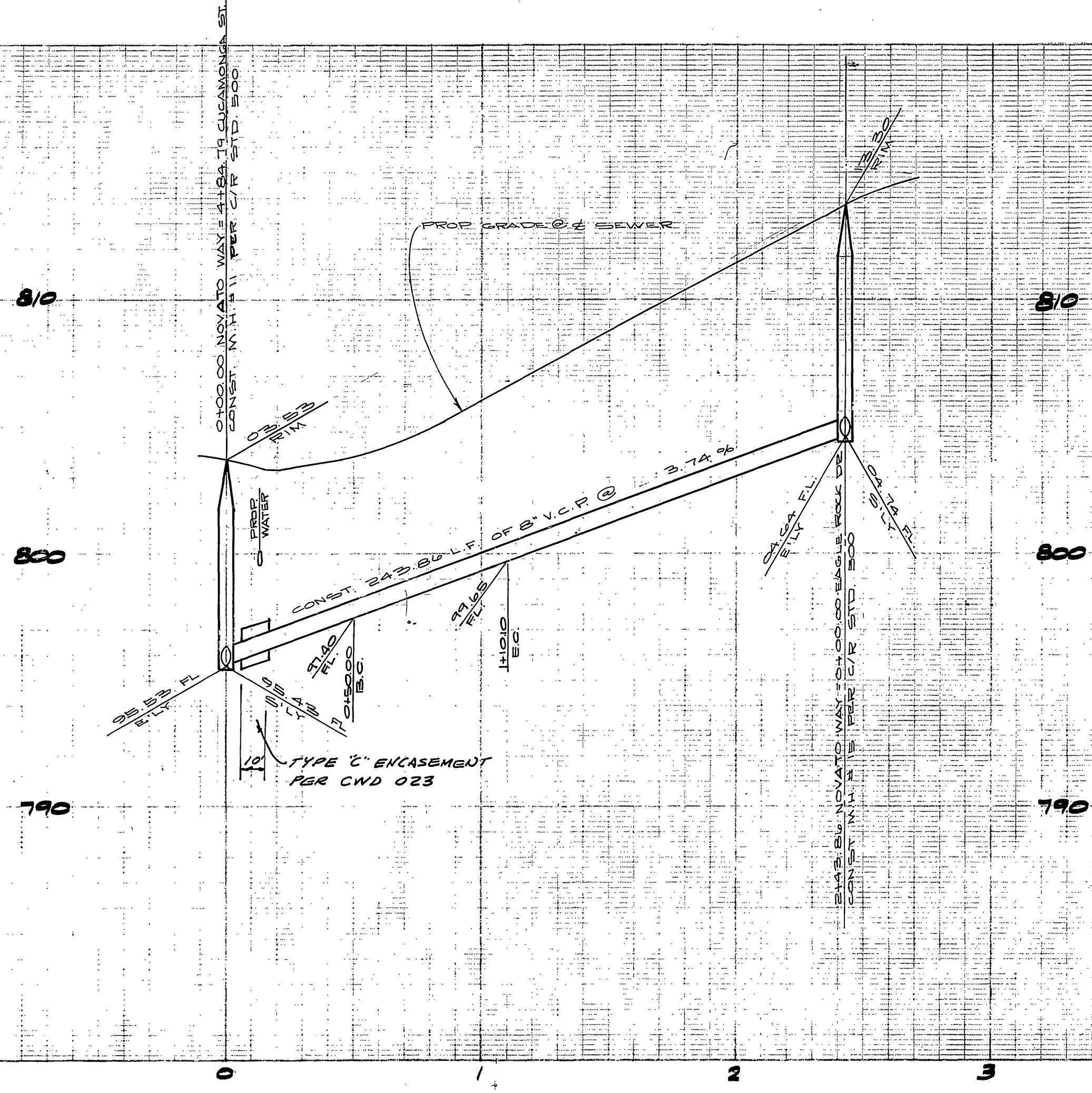
CITY OF RIVERSIDE
DOMESTIC SYSTEM
CHIEF UTILITIES ENGINEER WATER DATE 10-5-77

ALBERT A. WEBB ASSOCIATES
CIVIL ENGINEERS
RIVERSIDE, CALIFORNIA
APPROVED BY *David S. Webb* DATE 8-18-77
R.E. No. 21884

NO.	REVISIONS	APPR.	DATE

CITY OF RIVERSIDE, CALIFORNIA
PUBLIC WORKS DEPARTMENT
APPROVED BY *Robert M. Miller* DATE 4-13-78
PRINCIPAL ENGINEER
PARK DEPARTMENT
TRAFFIC DIVISION
CHIEF PUB. WKS. ENGR.

ACCOUNT No. 77-38
DRAWING NUMBER
TRACT NO. 94/B
CUCAMONGA STREET
SAN PEDRO PLACE
SHEET 7 OF 9
SCALE: HORIZ. 1" = 40' VERT. 1" = 4'
77-388



CURVE DATA				
NO	A	R	L	T
1	17°39'24"	19500'	6210'	3229'

BENCH MARK:
 TOP OF BOLT ON SE CORNER OF SIGNAL BASE @ THE NW CORNER OF ARLINGTON & TYLER PER C/R FB. 996/14 ELEV. 781.486

CITY OF RIVERSIDE
 DOMESTIC SYSTEM
 Chief Utilities Engineer, Water
 Date: 10-5-77

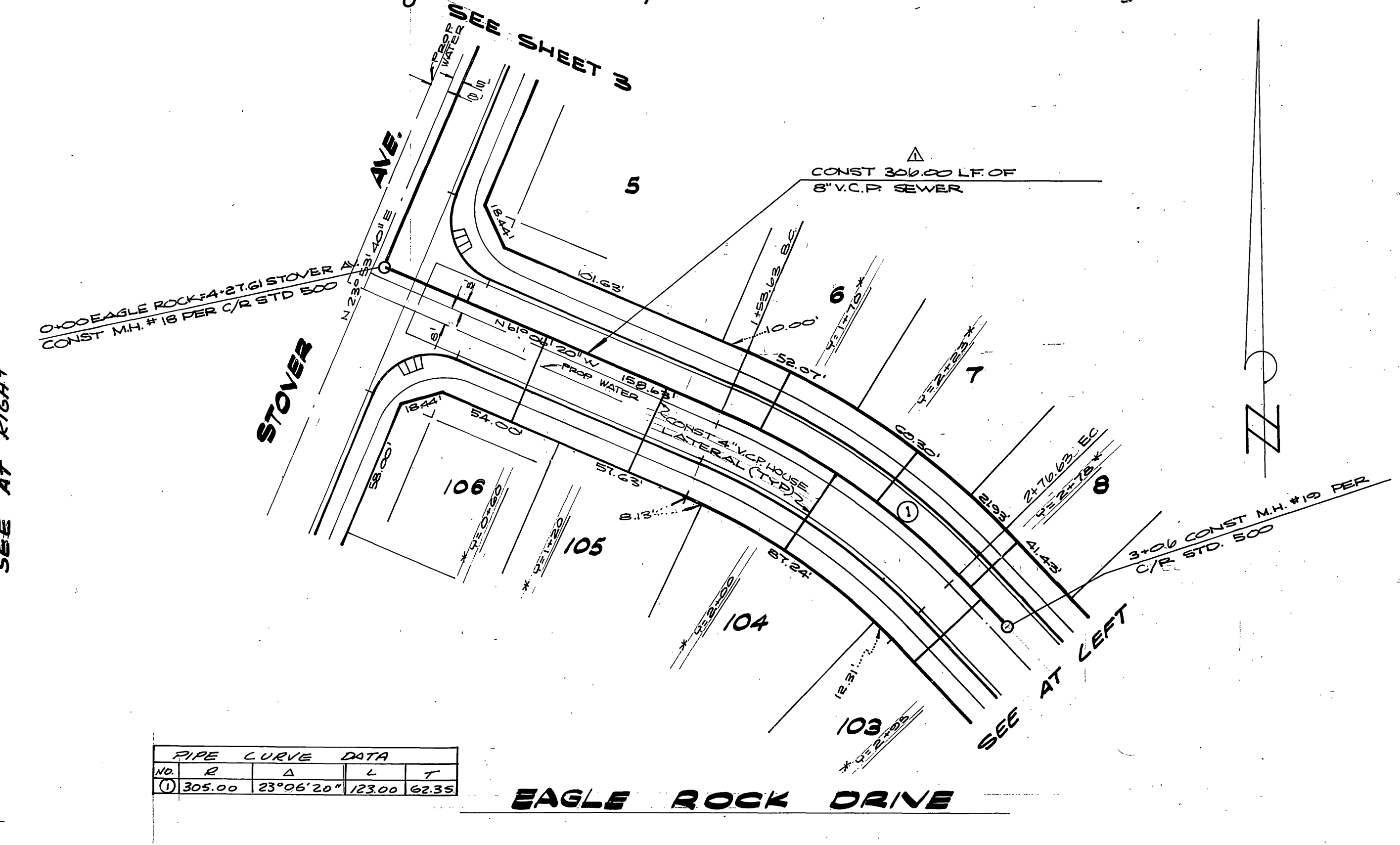
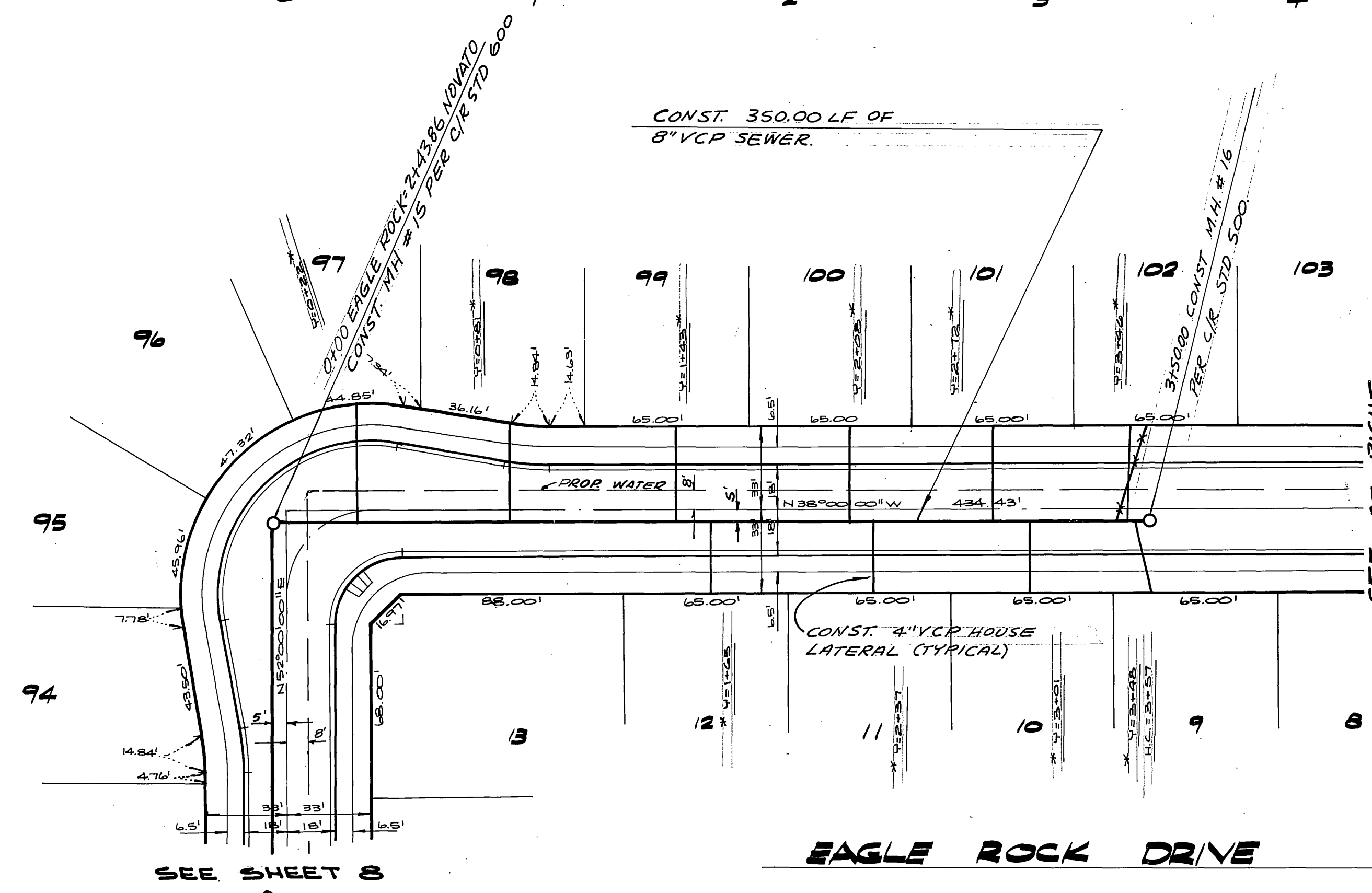
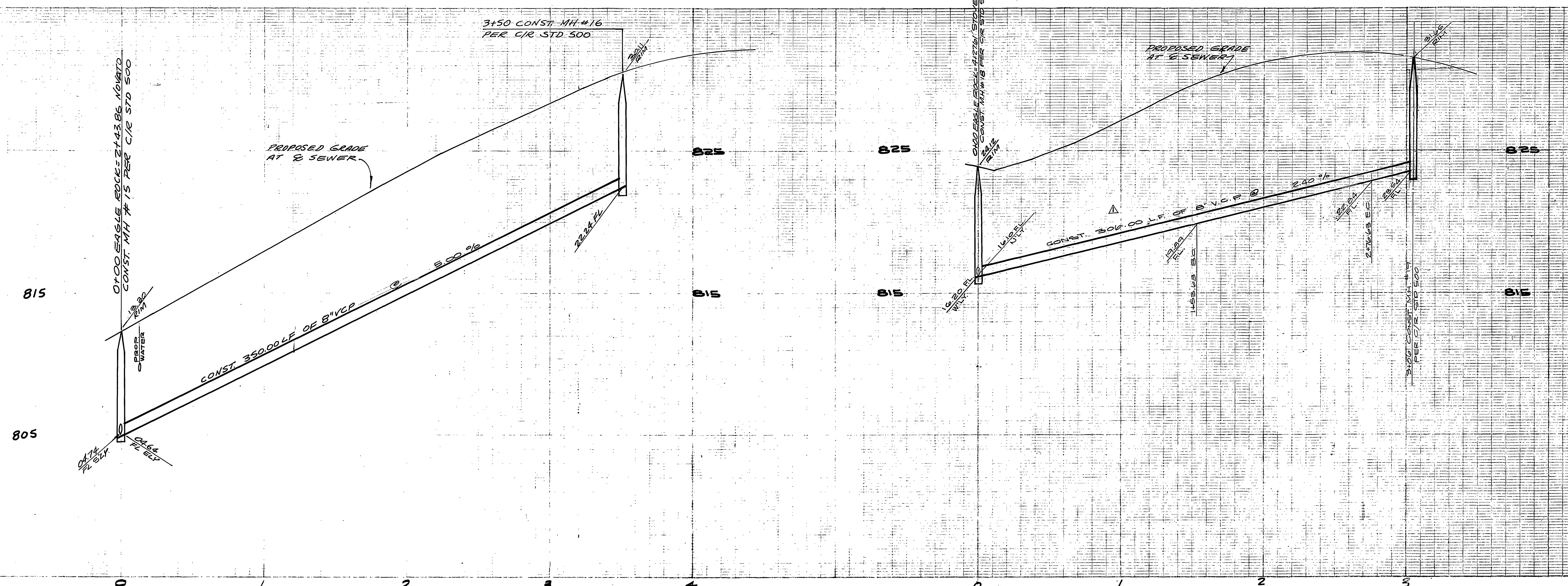
ALBERT A. WEBB ASSOCIATES
 CIVIL ENGINEERS
 RIVERSIDE, CALIFORNIA
 APPROVED BY: [Signature] DATE: 8-18-77
 R.E. No. 21884

MARK	REVISIONS	APPR. DATE

CITY OF RIVERSIDE, CALIFORNIA
 PUBLIC WORKS DEPARTMENT
 APPROVED BY: [Signature] DATE: 4-13-78
 PRINCIPAL ENGINEER
 PARK DEPARTMENT
 TRAFFIC DIVISION
 CHIEF PUB. WKS. ENGR.

SEWER PLAN & PROFILE
 TRACT NO. 9418
 NOVATO WAY
 SCALE: HORIZ. 1"=50' VERT. 1"=5'

ACCOUNT No. 77-35
 DRAWING NUMBER
 S-1171
 SHEET 8 OF 9
 77-368



PIPE CURVE DATA				
VR	R	Δ	L	T
10	305.00	23°06'20"	123.00	62.35

NOTE:
SEE SHEET 1 FOR GENERAL NOTES.

BENCH MARK:
TOP OF BOLT ON SE CORNER OF SIGNAL BASE @ THE NW CORNER OF ARLINGTON & TULOC PER C/R FB, 9/10/14 ELEV. 781.484

CITY OF RIVERSIDE
DOMESTIC SYSTEM
Wally Roff 10-5-77
CHIEF UTILITIES ENGINEER, WATER DATE

ALBERT A. WEBB ASSOCIATES
CIVIL ENGINEERS
RIVERSIDE, CALIFORNIA
APPROVED BY: [Signature] DATE 8/18/77
R.E. No. 21884
W.O. 77-38 FOR ANDEN COEP F.B. 1042

DESIGNED BY: [Signature] DRAWN BY: MPH. CHECKED BY: [Signature]

CITY OF RIVERSIDE, CALIFORNIA
PUBLIC WORKS DEPARTMENT
APPROVED BY: [Signature] DATE 1/13/98
PRINCIPAL ENGINEER
PARK DEPARTMENT
TRAFFIC DIVISION
CHIEF PUB. WKS. ENGR. 1/13/98

SEWER PLAN & PROFILE
TRACT NO. 94/B
EAGLE ROCK DRIVE
SCALE: HORIZ. 1"=40' VERT. 1"=4'

ACCOUNT No. 77-38
DRAWING NUMBER
S-1171
SHEET 2 OF 2
77-38 B