

GENERAL NOTES:

- CONSTRUCTION SHALL BE IN ACCORDANCE WITH STANDARD SPECIFICATIONS FOR PUBLIC WORKS CONSTRUCTION, 1976 EDITION, AND THE CITY OF RIVERSIDE STANDARD DRAWING.
- IT SHALL BE THE RESPONSIBILITY OF THE CONTRACTOR TO CLEAR THE RIGHT OF WAY IN ACCORDANCE WITH THE PROVISIONS OF LAW AS IT AFFECTS EACH UTILITY INCLUDING IRRIGATION LINES AND APPURTENANCES AND AT NO COST TO THE CITY.
- LOCATION OF WYES AND LATERALS TO BE DETERMINED AT THE DIRECTION OF THE OWNER.
- MANHOLE FRAMES AND COVERS TO BE SET TO PROPOSED PAVEMENT GRADES.
- LATERALS ARE 4" V.C.P. & EXTEND TO THE PROPERTY LINE.
- PRIOR TO CONSTRUCTION OF SEWER, CONTRACTOR IS TO EXPOSE EXISTING SEWER AND CONTACT ENGINEER FOR VERIFICATION OF EXISTING ELEVATION.
- THE SEWER CONTRACTOR SHALL ADJUST MANHOLES TO FINAL GRADE AFTER PAVING IS COMPLETED.
- CONTRACTOR SHALL MAINTAIN TRAFFIC IN BOTH DIRECTIONS ON FILLMORE STREET AT ALL TIMES DURING CONSTRUCTION.
- A PLUC SHALL BE INSTALLED AND WILL REMAIN IN PLACE WHERE THE NEW SEWER CONNECTS WITH THE EXISTING SEWER UNTIL THE NEW SEWER IS ACCEPTED BY THE CITY.

CONSTRUCTION NOTES:

- CONSTRUCT MANHOLES PER CITY OF RIVERSIDE PLAN NO. 500.
- CONSTRUCT CLEANOUT PER CITY OF RIVERSIDE PLAN NO. 560.
- "ENCASE SEWER MAIN 4.5' EACH SIDE OF WATER MAIN CROSSING WITH TYPE 'C' CONCRETE ENCASEMENT AS PER PUBLIC UTILITY DWG. C.W.D.-023."
- 4" V.C.P. LATERAL

"The private engineer signing these plans is responsible for the accuracy and acceptability of the work hereon. In the event of discrepancies arising during construction the private engineer signing the plans shall be responsible for determining an acceptable solution and revising the plans for approval by the City."

NOTICE TO CONTRACTOR:

THE EXISTENCE AND LOCATION OF ANY UNDERGROUND UTILITY PIPES OR STRUCTURES SHOWN ON THESE PLANS ARE OBTAINED BY A SEARCH OF AVAILABLE RECORDS. TO THE BEST OF OUR KNOWLEDGE THERE ARE NO EXISTING UTILITIES EXCEPT AS SHOWN ON THESE PLANS. THE CONTRACTOR IS REQUIRED TO TAKE PRECAUTIONARY MEASURES TO PROTECT THE UTILITY LINES SHOWN AND OTHER LINES NOT OF RECORD OR NOT SHOWN ON THESE PLANS.

BENCHMARK
 172.46' NAIL @ TAG IN NLY
 CEMENT BANK OF RWIC CANAL
 E'LY SIDE FILLMORE ST.
 ELEV. 797.286'

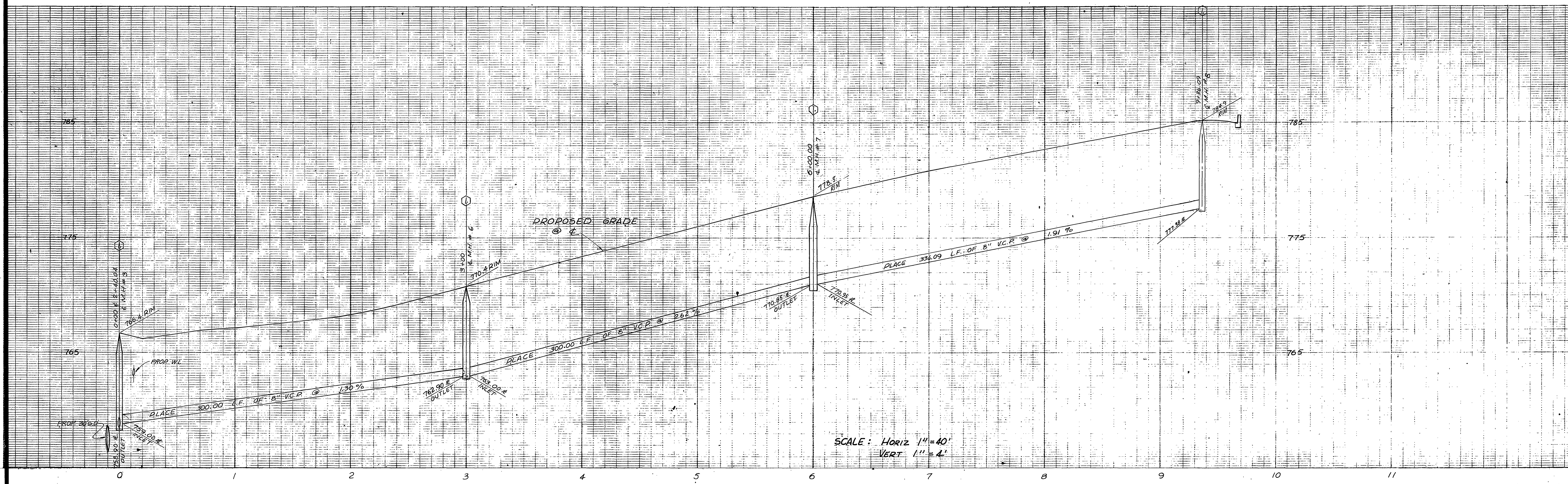
J. F. DAVIDSON ASSOCIATES CIVIL ENGINEERS - SURVEYORS - PLANNERS RIVERSIDE, CALIFORNIA		CITY OF RIVERSIDE, CALIFORNIA DEPARTMENT OF PUBLIC WORKS		PROJECT NO. 61172
APPROVED BY: <i>John W. Canty</i> DATE: 9/14/77 R.E. No. 17,550		APPROVED BY: <i>[Signature]</i> DIRECTOR OF PUBLIC WORKS		SHEET <u>1</u> OF <u>6</u>
W.O. 5057 FOR MURRAY DEV. CO. F.B.		DATE: 9/24/78		FILE NO. 5546

* AS BUILT 11-28-79 B.P.

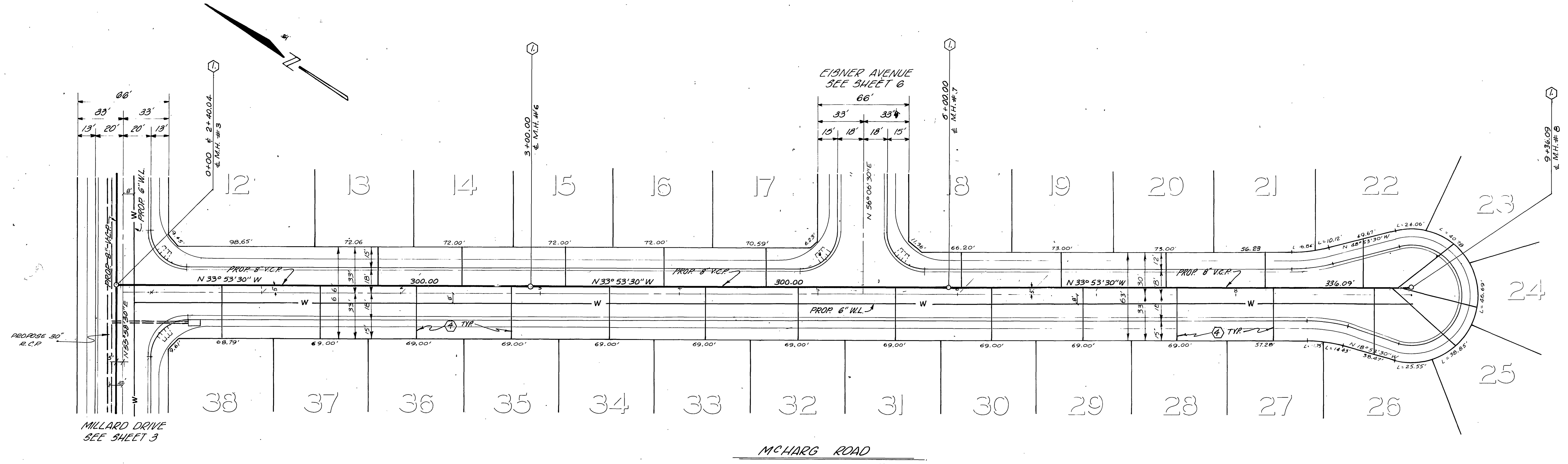
SEWER PLANS & PROFILE

TRACT NO. 8898-1
 TITLE SHEET

HORIZ. SCALE: 1" = VERT. SCALE: 1" =



SCALE: HORIZ 1" = 40'
VERT 1" = 4'



BENCHMARK
FD. PK. NAIL & TAG IN NLY
CEMENT BANK OF R.W.C. CANAL
E'LY SIDE FILLMORE ST.
ELEV. 797.286'

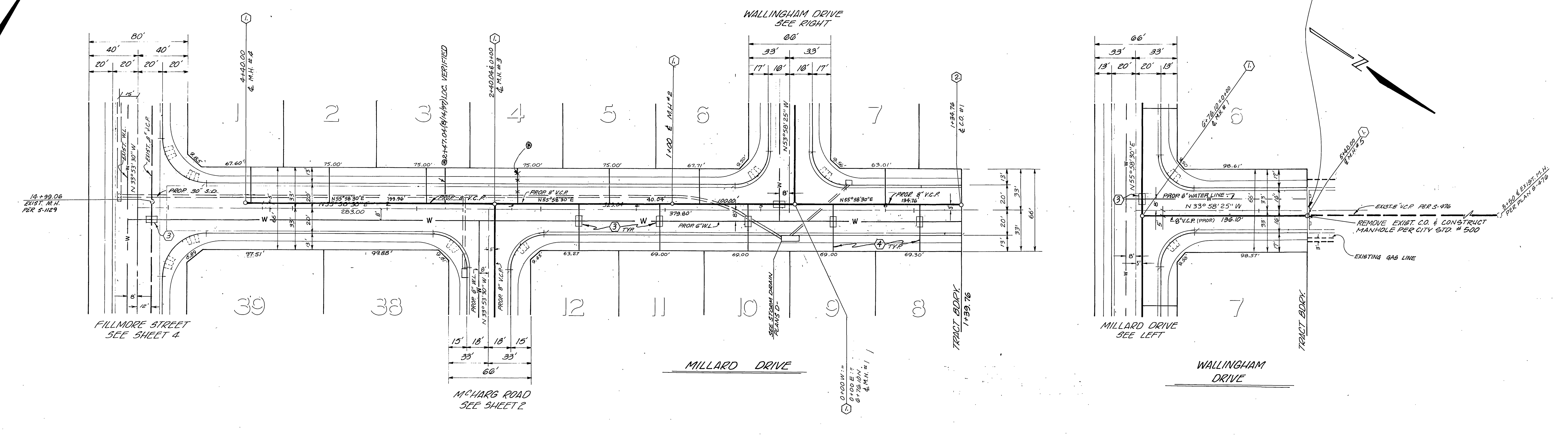
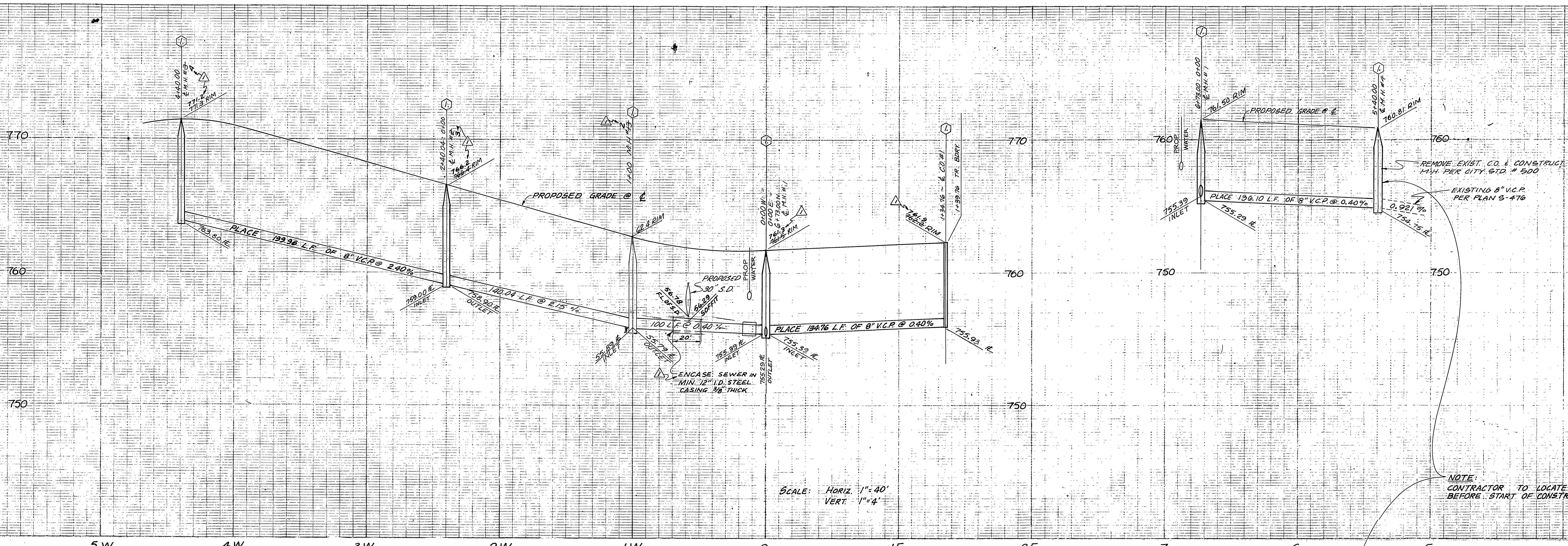
CITY OF RIVERSIDE, DOMESTIC SYSTEM
By: *Wesley Hylan* 8-26-77
CHIEF UTILITIES ENGINEER, WATER

J. F. DAVIDSON ASSOCIATES
CIVIL ENGINEERS - SURVEYORS - PLANNERS
RIVERSIDE, CALIFORNIA
APPROVED BY: *J. W. Canty* DATE 6/6/77
R.E. No. 11550

MARK	REVISIONS	APPR. DATE

CITY OF RIVERSIDE, CALIFORNIA
DEPARTMENT OF PUBLIC WORKS
APPROVED BY: *Paul J. Walker*
PRINCIPAL ENGINEER
TRAFFIC DIVISION
DATE 5/30/78

* AS BUILT 11-28-79 B.P.
PROJECT NO. 5-1172
SEWER PLAN & PROFILE
TRACT 8898-1
MCHARG ROAD
SHEET 2 OF 6
HORIZ. SCALE: 1" = 40' VERT. SCALE: 1" = 4'
FILE NO. 5546



BENCHMARK
FD. PK. MAIL & TAG IN NLY
CEMENT BANK OF R.W.C. CANAL
E'LY SIDE FILLMORE ST.
ELEV. 791.296'

CITY OF RIVERSIDE, DOMESTIC SYSTEM

By: *Wesley Johnson* 8-26-77
CHIEF UTILITIES ENGINEER, WATER DATE

J. F. DAVIDSON ASSOCIATES
CIVIL ENGINEERS - SURVEYORS - PLANNERS
RIVERSIDE, CALIFORNIA

APPROVED BY: *John W. Canty* DATE: 9/6/77
R.E. No. 17,550

W.D. 5257 FOR: MURRAY DEV. CO. F.B.

REV. RIM ELEV'S & M.H. #'S SHOWN SEWER ENCASUREMENTS

REVISIONS

DESIGNED BY C.H. DRAWN BY C.F. CHECKED BY C.H.

CITY OF RIVERSIDE, CALIFORNIA
DEPARTMENT OF PUBLIC WORKS

APPROVED BY: *[Signature]* DATE: 5/30/78
PRINCIPAL ENGINEER
PARK DEPARTMENT
TRAFFIC DIVISION
CHIEF P. W. ENGR.

SEWER PLAN & PROFILE
TRACT 8898-1
MILLARD DRIVE
WALLINGHAM DRIVE

PROJECT NO. S-1172
SHEET 3 OF 6
FILE NO. 5546

HORIZ. SCALE: 1" = 40'
VERT. SCALE: 1" = 4'

AS BUILT 8/14/97 RUM
* AS BUILT 11-28-79 BR

780

770

760

13

14

15

16

17

18

19

20

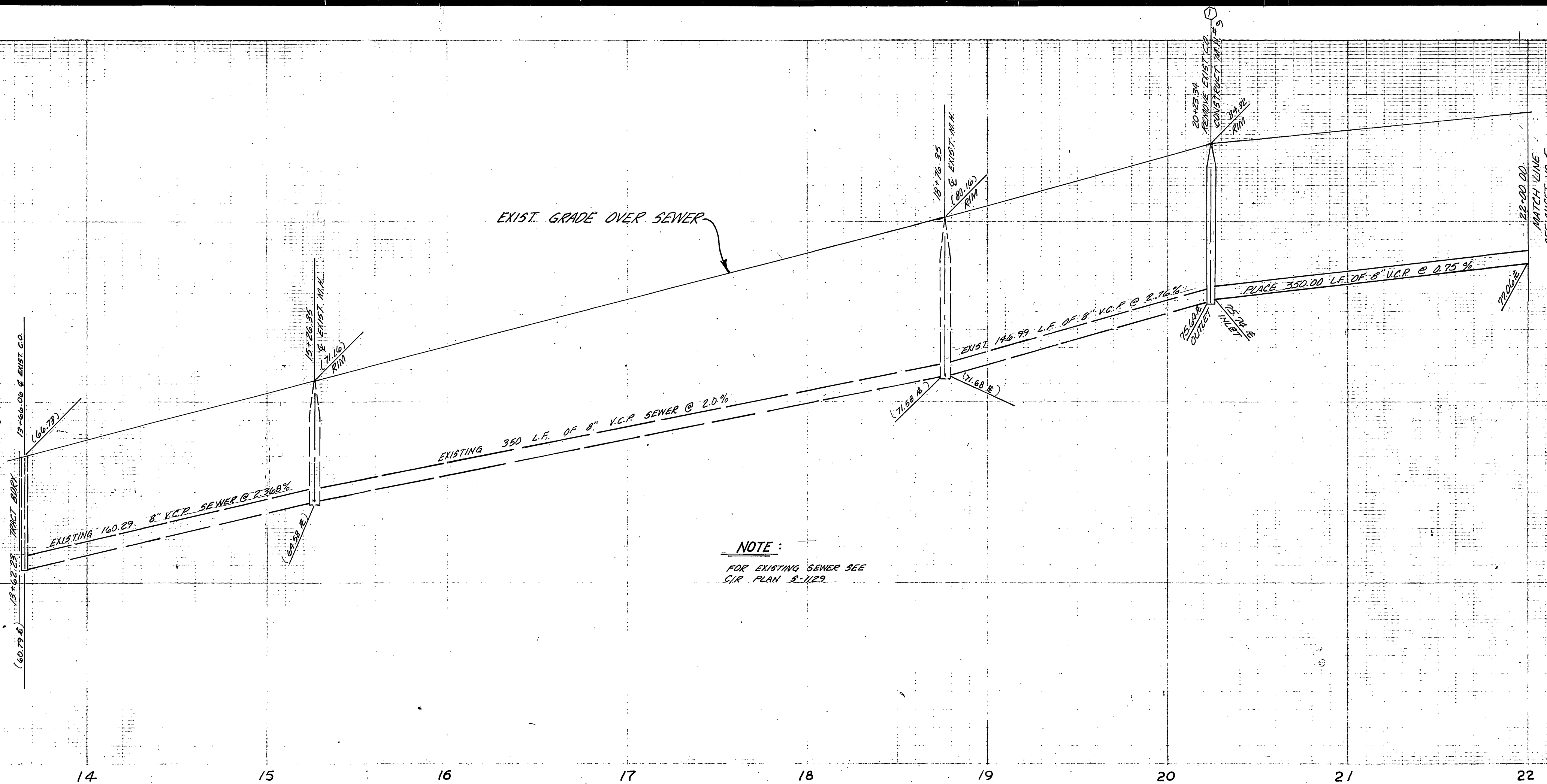
21

22

780

770

EXIST. GRADE OVER SEWER

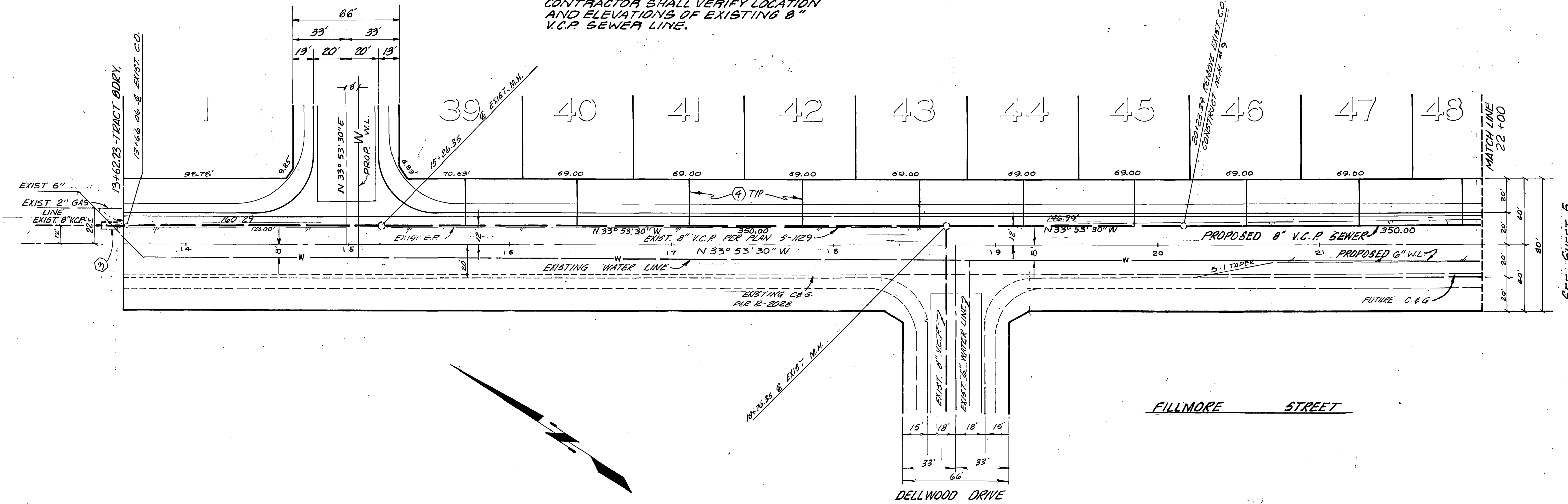


NOTE:
FOR EXISTING SEWER SEE
C/R PLAN 8-1123

SCALE: HORIZ. 1" = 40'
VERT. 1" = 4'

MILLARD DRIVE
SEE SHEET 3

NOTE:
CONTRACTOR SHALL VERIFY LOCATION
AND ELEVATIONS OF EXISTING 8"
V.C.P. SEWER LINE.



SEE SHEET 5



BENCH MARK
P.D. PK. NAIL & TAG IN NLY
CEMENT BANK OF RIV. CANAL
ELY SIDE FILLMORE ST.
ELEV. 797.286'

CITY OF RIVERSIDE, DOMESTIC SYSTEM

By: *Walter Hoffman* 8-26-77
CHIEF UTILITIES ENGINEER, WATER

J. F. DAVIDSON ASSOCIATES
CIVIL ENGINEERS - SURVEYORS - PLANNERS
RIVERSIDE, CALIFORNIA

APPROVED BY: *John W. Cantor* DATE 6/6/77
R.E. No. 17,890

W.O. 5057 FOR: Murray Dev. Co. F.B.

MARK	REVISIONS	APPR. DATE

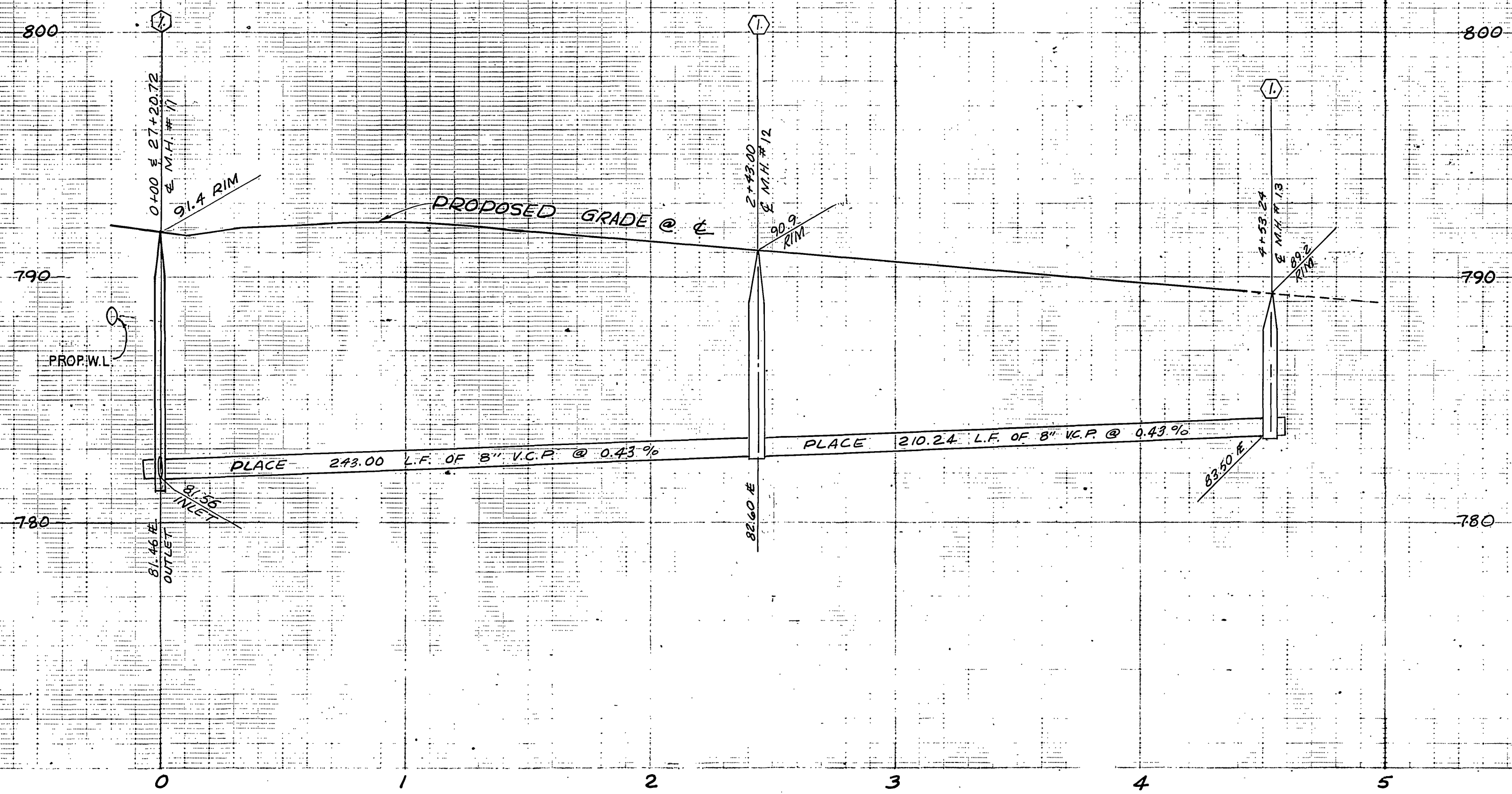
CITY OF RIVERSIDE, CALIFORNIA
DEPARTMENT OF PUBLIC WORKS

APPROVED BY: *[Signature]* DATE 5/30/78
PRINCIPAL ENGINEER
TRAFFIC DIVISION
CHIEF P. W. ENGR.

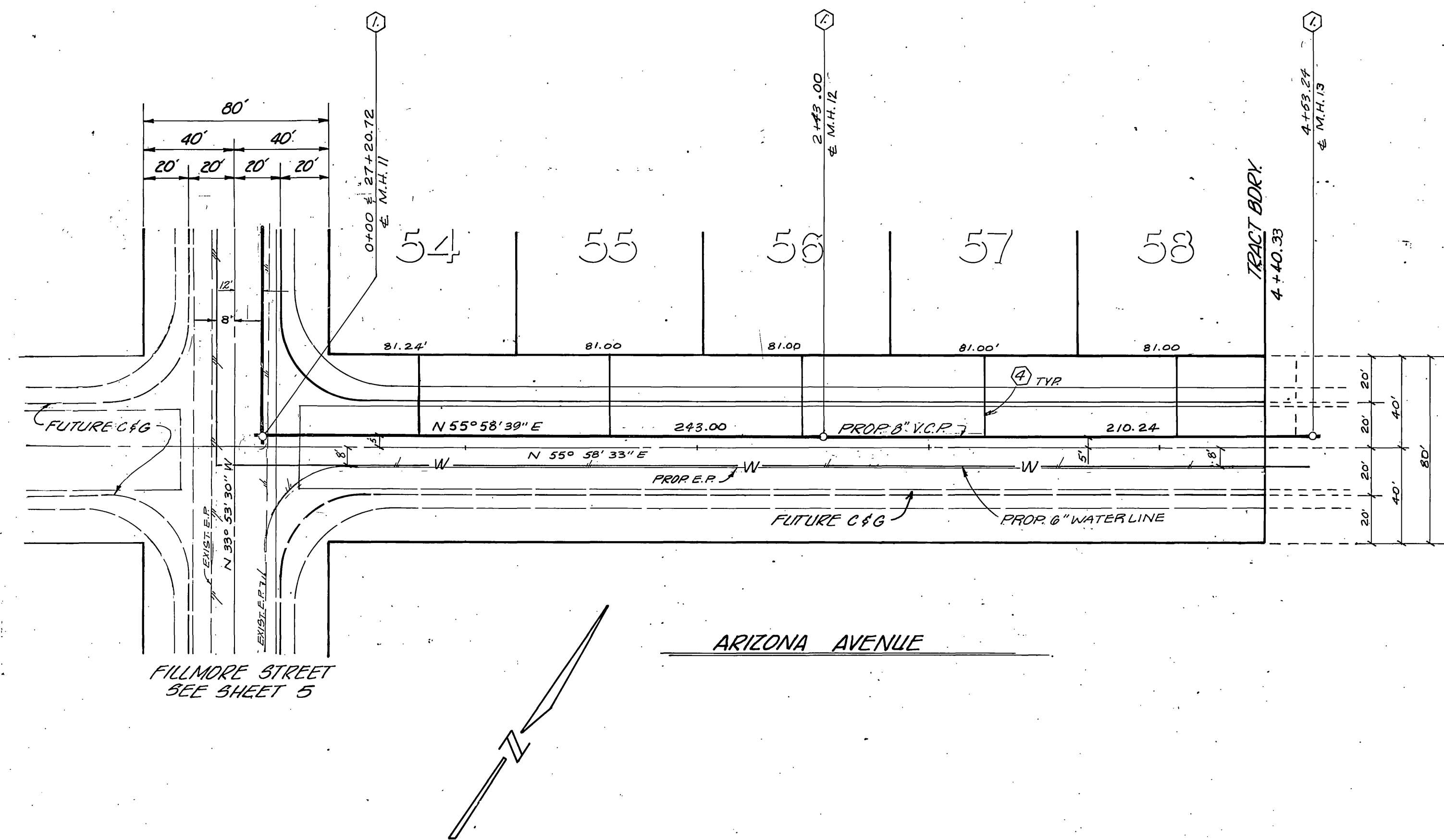
* AS BUILT 11-28-79 B.P.
SEWER PLAN & PROFILE
TRACT 8898-1
FILLMORE STREET

HORIZ. SCALE: 1" = 40' VERT. SCALE: 1" = 4'

PROJECT NO. 5-1172
SHEET 4 OF 6
FILE NO. 5545



SCALE: HORIZ. 1" = 40'
VERT. 1" = 4'



FILLMORE STREET
SEE SHEET 5

ARIZONA AVENUE

BENCHMARK
FD. PK. MAIL & TAG IN N'LY
CEMENT BANK OF R.W.C. CANAL
E'LY SIDE FILLMORE ST.
ELEV. 797.286'

CITY OF RIVERSIDE, DOMESTIC SYSTEM.
By *Walter Hill* 8-26-77
CHIEF UTILITIES ENGINEER, WATER DATE

J. F. DAVIDSON ASSOCIATES
CIVIL ENGINEERS - SURVEYORS - PLANNERS
RIVERSIDE, CALIFORNIA
APPROVED BY *John W. Canty* DATE 6/6/77
R.E. No. 17,550

MARK	REVISIONS	APPR.	DATE

CITY OF RIVERSIDE, CALIFORNIA
DEPARTMENT OF PUBLIC WORKS
APPROVED BY *[Signature]* BY *[Signature]* DATE 5/30/78
PRINCIPAL ENGINEER
PARK DEPARTMENT
TRAFFIC DIVISION
CHIEF P. W. ENGR.

* AS BUILT 11-28-79 B.P.
SEWER PLAN & PROFILE
TRACT 8898-1
ARIZONA AVENUE
HORIZ. SCALE: 1" = 40' VERT. SCALE: 1" = 4'

PROJECT NO. 5-1172
SHEET 6 OF 6
FILE NO. 5546