

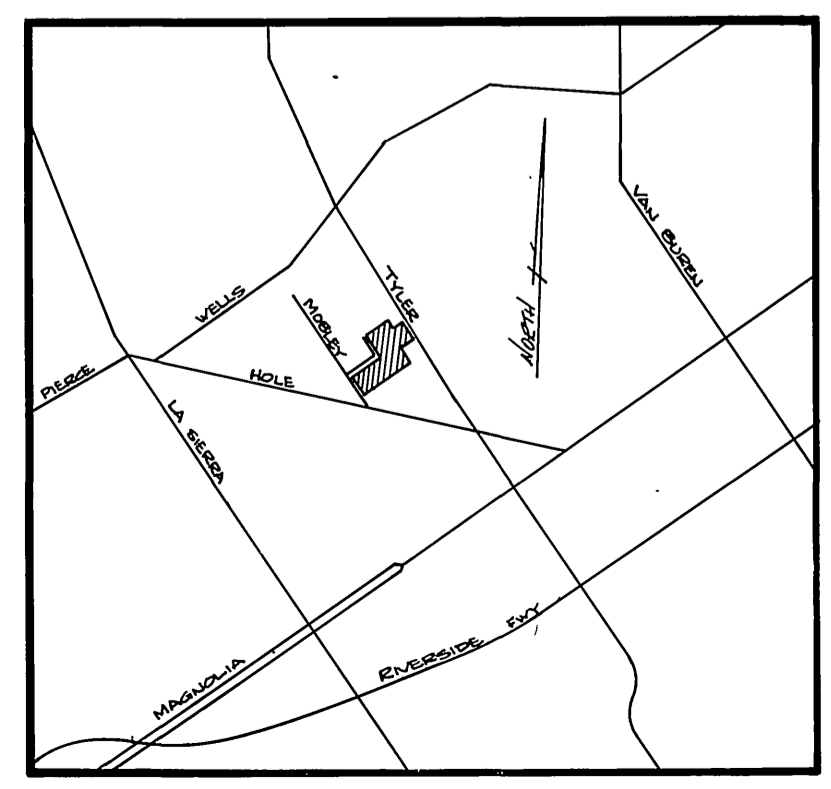
- GENERAL NOTES:**
- The private engineer signing these plans is responsible for the accuracy and acceptability of the work hereon. In the event of discrepancies arising during construction, the private engineer shall be responsible for determining an acceptable solution, and revising the plans for approval by the City.
 - Construction shall be in accordance with standard specifications for public works construction, 1976 Edition, and City of Riverside Standard Drawings.
 - It shall be the responsibility of the Contractor to clear the right of way in accordance with the provisions of Law as it affects each utility and at no cost to the City.
 - Pipe shall be bedded per case 1, Standard Drawing No. 452, unless otherwise specified on plans.
 - Location of vyes and laterals to be determined at the direction of the owner.
 - All stubs and laterals to be constructed in accordance with Standard Drawing No. 562, stubs to be plugged and capped, unless otherwise specified on plans.
 - The sewer contractor shall adjust manholes to final grade after paving is completed.
 - Laterals are to be 4" and extended to property line.
 - Prior to construction of sewer, contractor is to expose existing sewer and contact the engineer for verification of existing location and elevation.
 - A plug shall be installed and will remain in place where the new sewer connects with the existing sewer until the new sewer is accepted by the City.

NOTICE TO CONTRACTOR

The existence and location of underground utilities pipes or structures shown on these plans are obtained by a search of the available records. To the best of our knowledge, there are no existing utilities except as shown on these plans.

The contractor is required to take due precautionary measures to protect the utilities lines shown and other lines not of record or not shown in these plans.

- (C) Encase sewer 4.5' each side of water crossing with Type 'C' encasement as per Public Utility Dwg. 023.
- (D) Encase sewer to a perpendicular distance 10' on each side of water crossing with Type 'C' encasement as per Public Utility Dwg. 023.



INDEX MAP
NO SCALE

BENCH MARK:
A brass disc, stamped FB-A 10" down in capped well at the intersection of Wells Ave & Tyler St. Elev. 749.021

City of Riverside
Domestic System
by *Walter Tyler* 11-7-77
Chief Utilities Engineer - Water Date

ALBERT A. WEBB ASSOCIATES
CIVIL ENGINEERS
RIVERSIDE, CALIFORNIA

APPROVED BY: *[Signature]* DATE: 11-16-77
R.E. No. 21882

W.O. 76-302 FOR: Woodhaven Dev. F.B. 1041

* AS BUILT 9/22/78 BK		"AS BUILT" 10-26-79	
CITY OF RIVERSIDE, CALIFORNIA PUBLIC WORKS DEPARTMENT		SEWER PLAN AND PROFILE TRACT No. 8006 INDEX MAP	
APPROVED BY: <i>[Signature]</i> PRINCIPAL ENGINEER PARK DEPARTMENT	BY: <i>[Signature]</i> DATE: 9/13/78 DIRECTOR OF PUBLIC WORKS	ACCOUNT No. DRAWING NUMBER S-1173	SHEET 1 OF 8 76-302-B
MARK REVISIONS APPR. DATE	DESIGNED BY: <i>RLT</i> DRAWN BY: <i>PH</i> CHECKED BY:	SCALE: AS SHOWN	

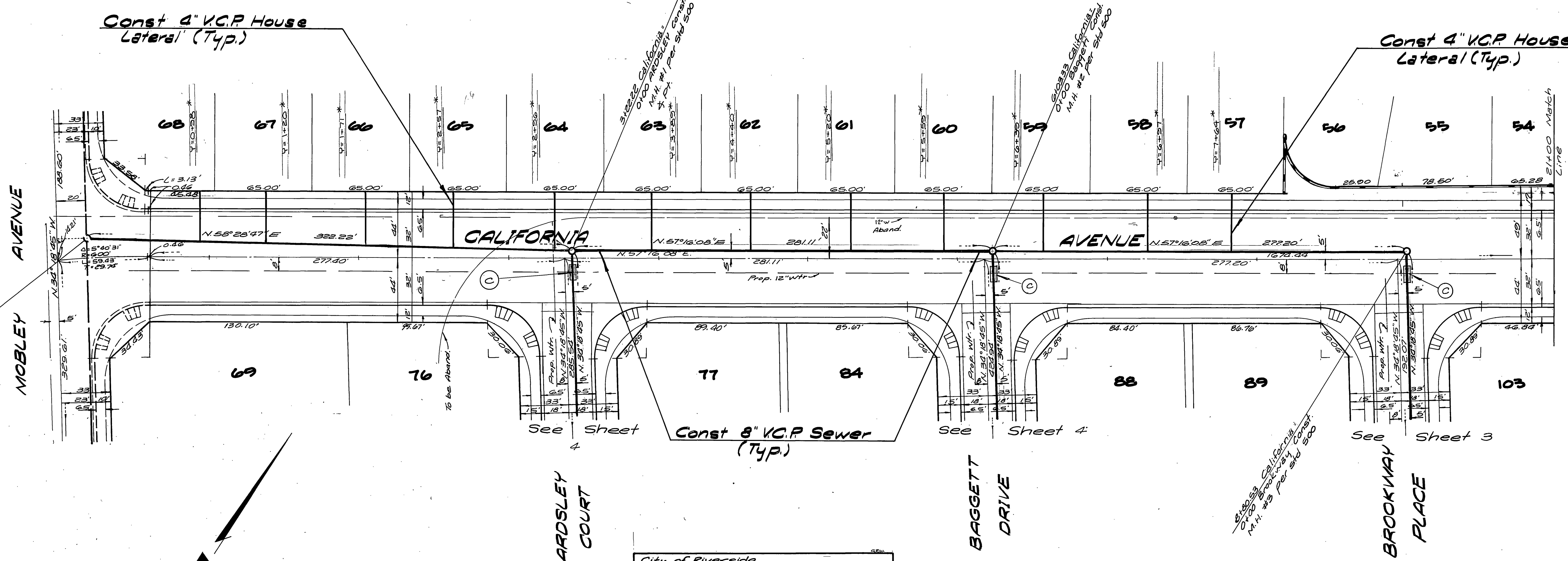
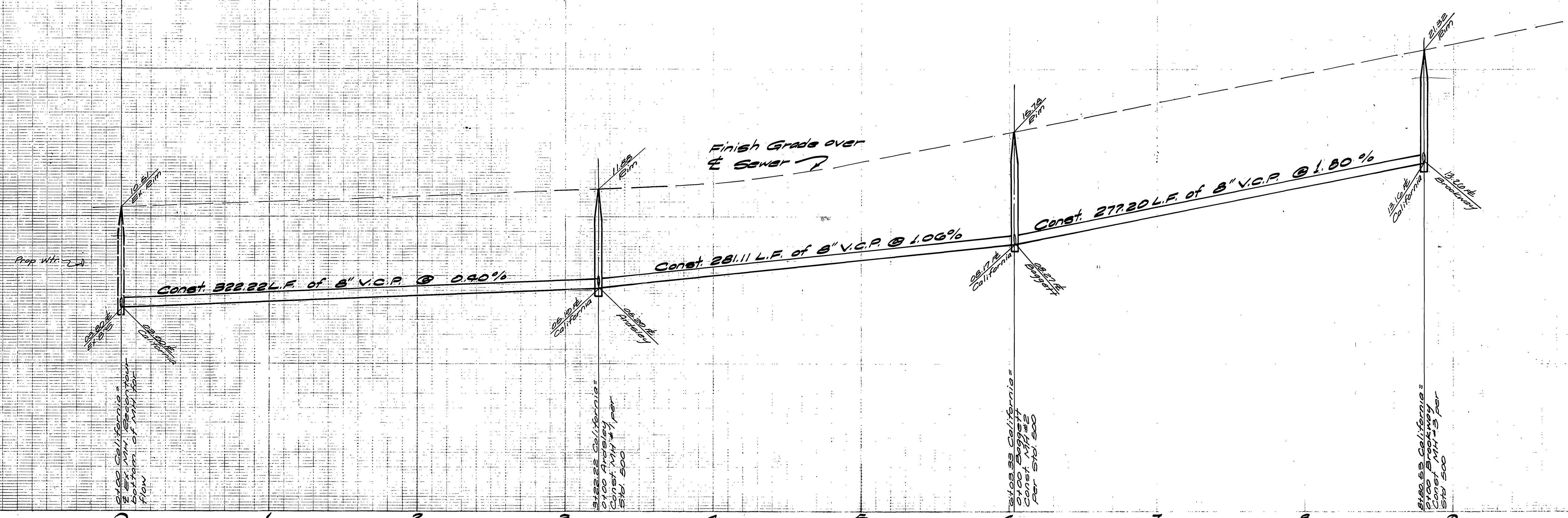
720

710

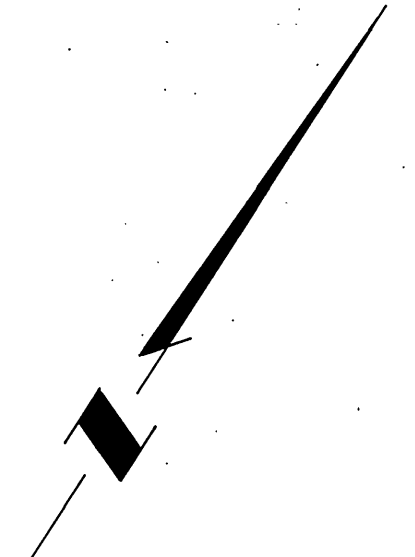
700

720

710



Note: SEE SHEET 1 FOR GENERAL NOTES



BENCH MARK:
 A Brass Disc Stamped F3-A 10" Down in capped wall at the intersection of Wells Ave. and Tyler St. Elevation: 719.99'

City of Riverside
 Domestic System
 by *Wesley Stylen* 11-7-77
 Chief Utilities Engineer - Water Date

ALBERT A. WEBB ASSOCIATES
 CIVIL ENGINEERS
 RIVERSIDE, CALIFORNIA
 APPROVED BY *Paul E. Webb* DATE 8-16-77
 R.E. No. 21824

MARK	REVISIONS	APPR.	DATE

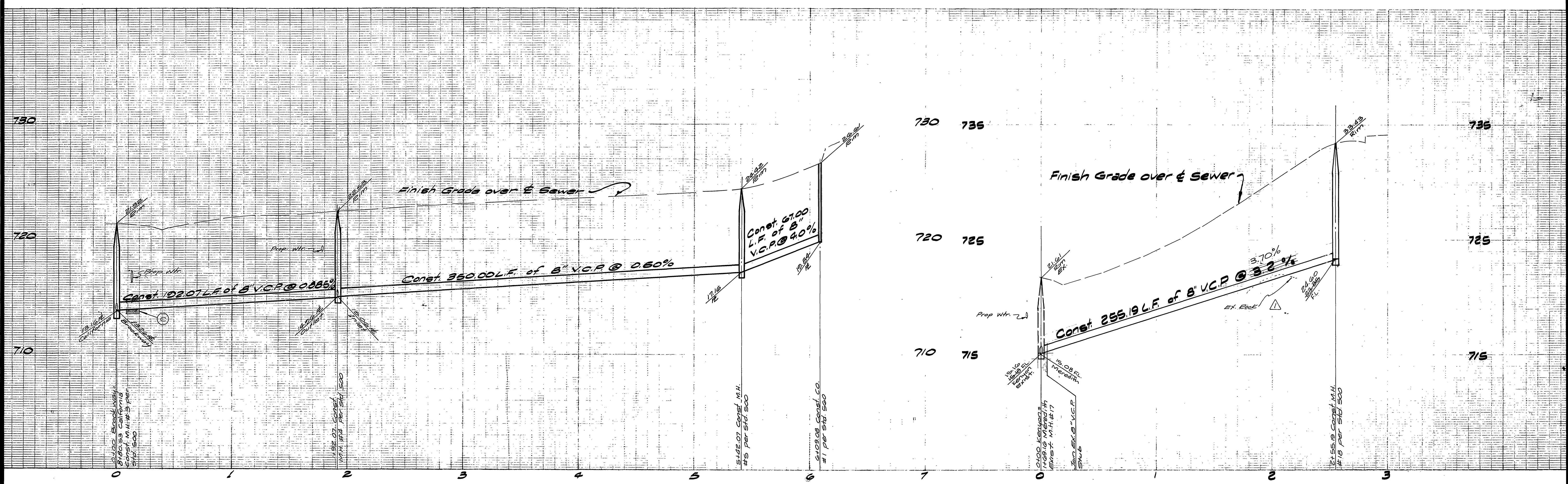
CITY OF RIVERSIDE, CALIFORNIA
 PUBLIC WORKS DEPARTMENT
 APPROVED BY *Wesley Stylen* BY DATE *11/7/77*
 PRINCIPAL ENGINEER
 PARK DEPARTMENT
 TRAFFIC DIVISION
 CHIEF PUB. WKS. ENGR.

SEWER PLAN AND PROFILE
 TRACT NO. 8006
 CALIFORNIA AVENUE
 DATE 5/15/78

ACCOUNT No.
 DRAWING NUMBER
 5-1173
 SHEET 2 OF 3
 76-302-B

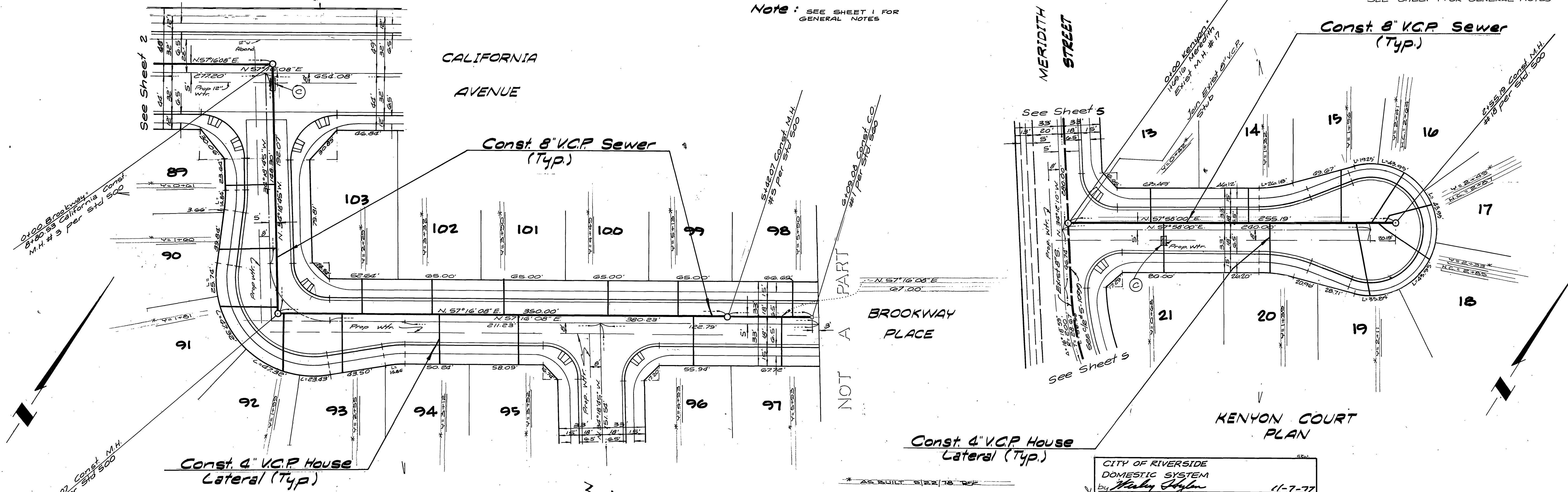
W.O. 76-302 FOR Woodhaven Dev F.B. 10d1

SCALE: Horiz. 1"=40' Vert. 1"=5'



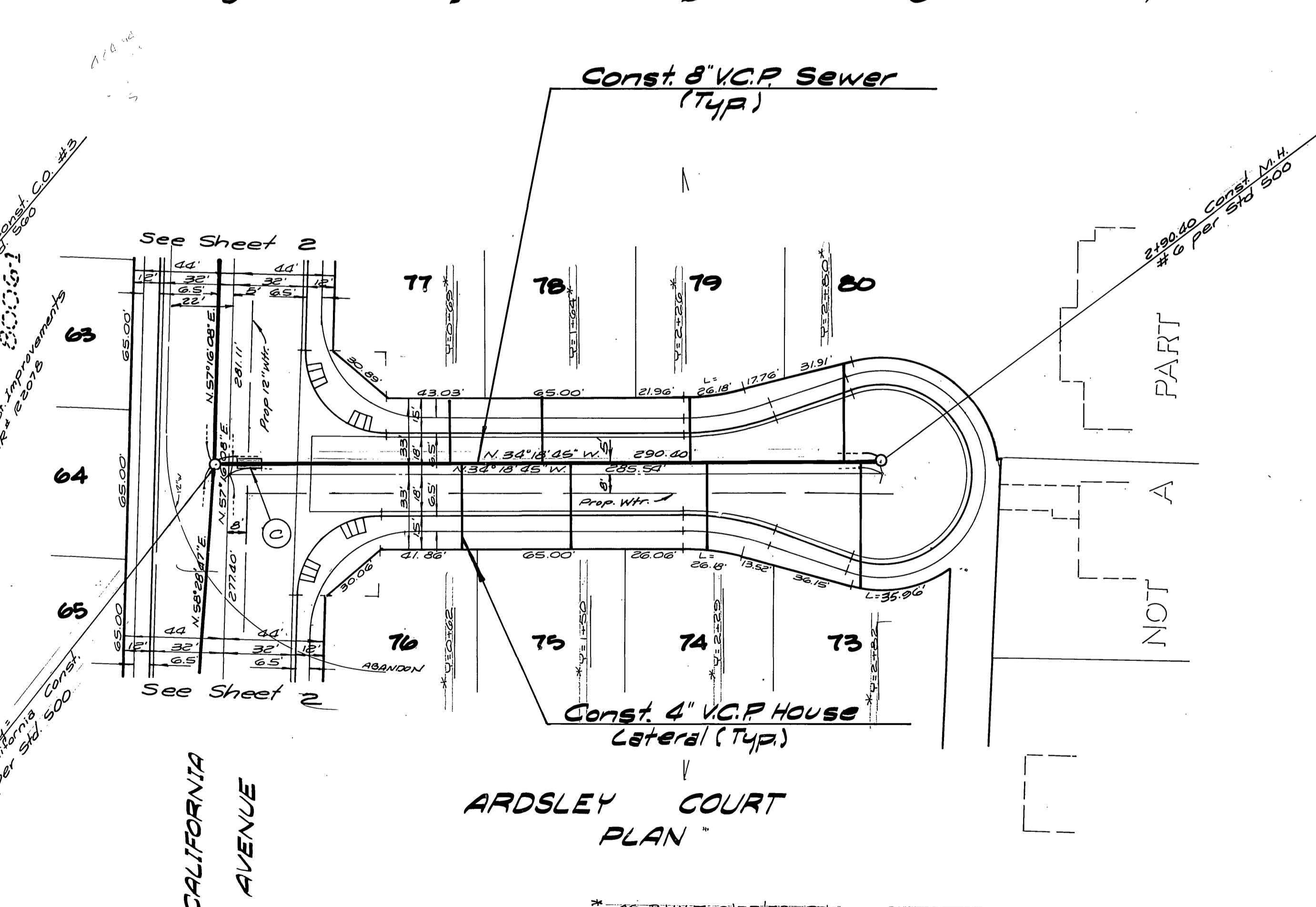
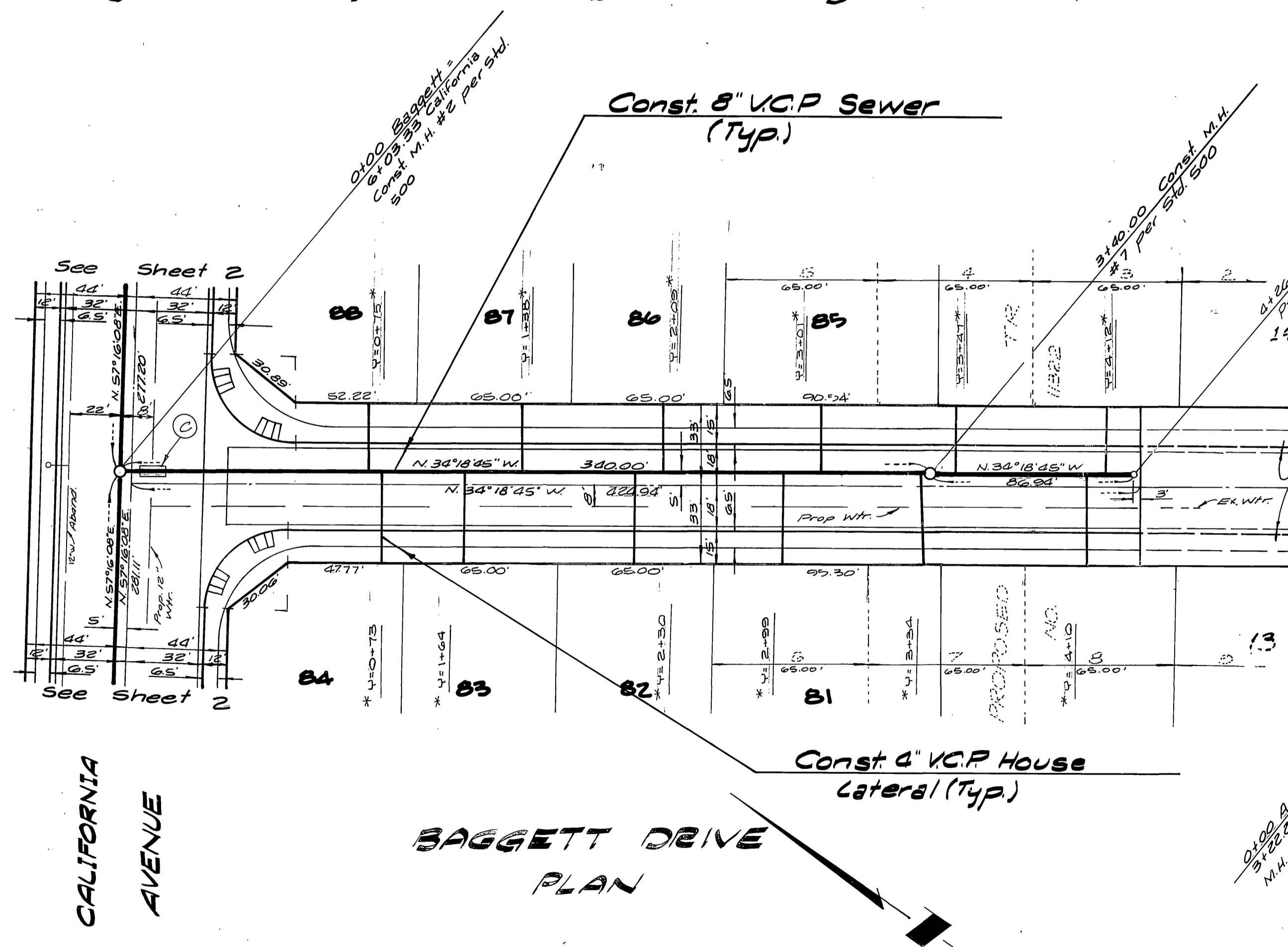
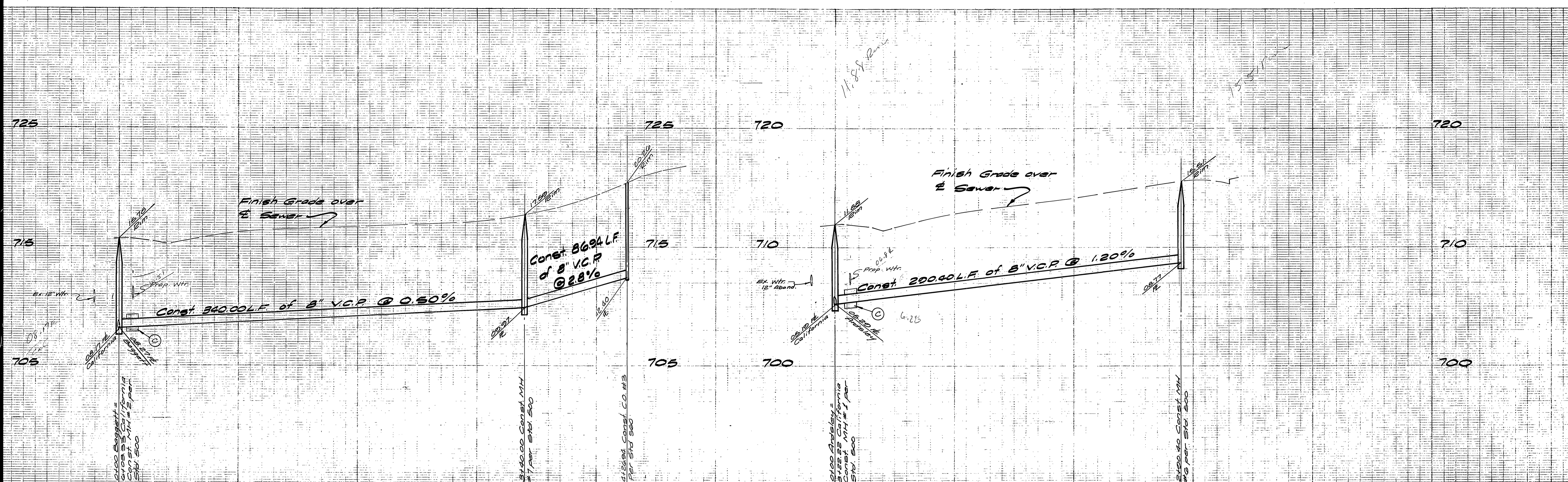
Note: SEE SHEET 1 FOR GENERAL NOTES

NOTE: SEE SHEET 1 FOR GENERAL NOTES



BENCH MARK:
A brass disc stamped F3-A 10" down in capped well at the intersection of Wells Ave. and Tyler St. Elev: 729.991

ALBERT A. WEBB ASSOCIATES CIVIL ENGINEERS RIVERSIDE, CALIFORNIA APPROVED BY: <i>[Signature]</i> DATE: 8-14-77 R.E. No. 21854 W.O. 76-302 FOR: Woodhaven Dev. F.B. 1041		CITY OF RIVERSIDE DOMESTIC SYSTEM by <i>[Signature]</i> Chief Utilities Engineer-water 11-7-77 CITY OF RIVERSIDE, CALIFORNIA PUBLIC WORKS DEPARTMENT APPROVED BY: <i>[Signature]</i> DATE: 5/15/78 PRINCIPAL ENGINEER PARK DEPARTMENT TRAFFIC DIVISION CHIEF PUB. WKS. ENGR.		SEWER PLAN AND PROFILE TRACT No. 8006 BROOKWAY PL. KENYON COURT SCALE: Horiz 1"=40', Vert 1"=4' ACCOUNT No. DRAWING NUMBER S-1173 SHEET 3 OF 8 76-302-B	
--	--	--	--	---	--



Note: SEE SHEET 1 FOR GENERAL NOTES

BENCH MARK:
A brass disc, stamped F3-A 10" down in capped well at the intersection of Wells Ave. and Tyler St. Elevation: 709.091

City of Riverside
Domestic System
by *Walter Aylen* 11-7-77
Chief Utilities Engineer-Water Date

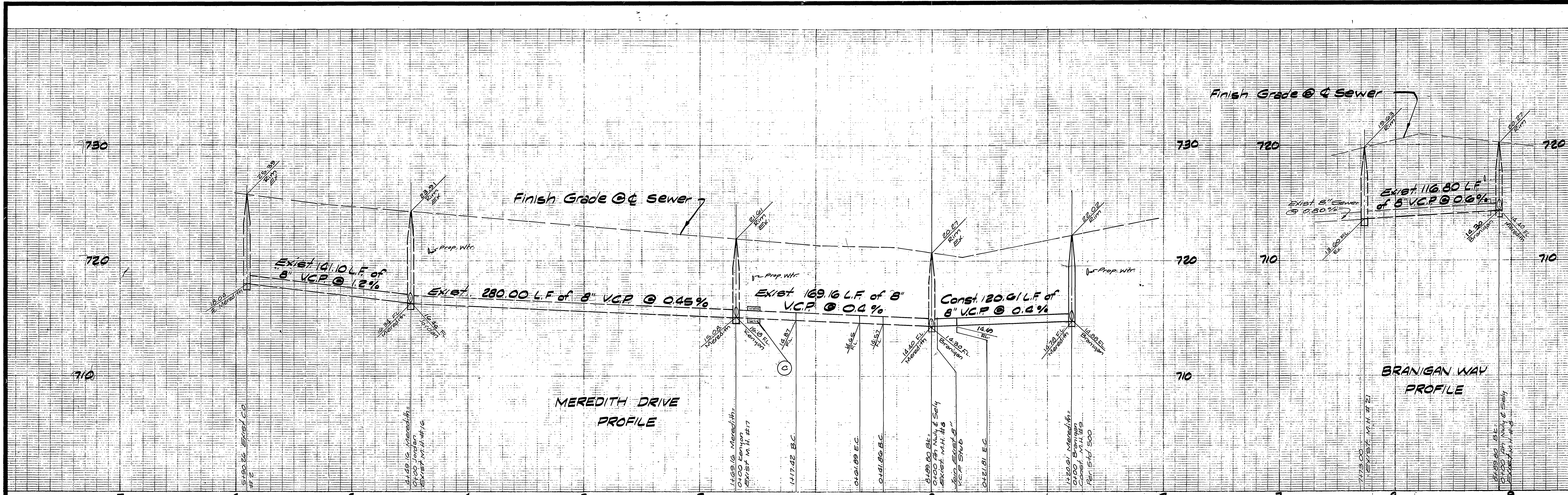
ALBERT A. WEBB ASSOCIATES
CIVIL ENGINEERS
RIVERSIDE, CALIFORNIA
APPROVED BY *R. J. S. [Signature]* DATE 8-16-77
R.E. No. 21824

MARK	REVISIONS	APPR. DATE

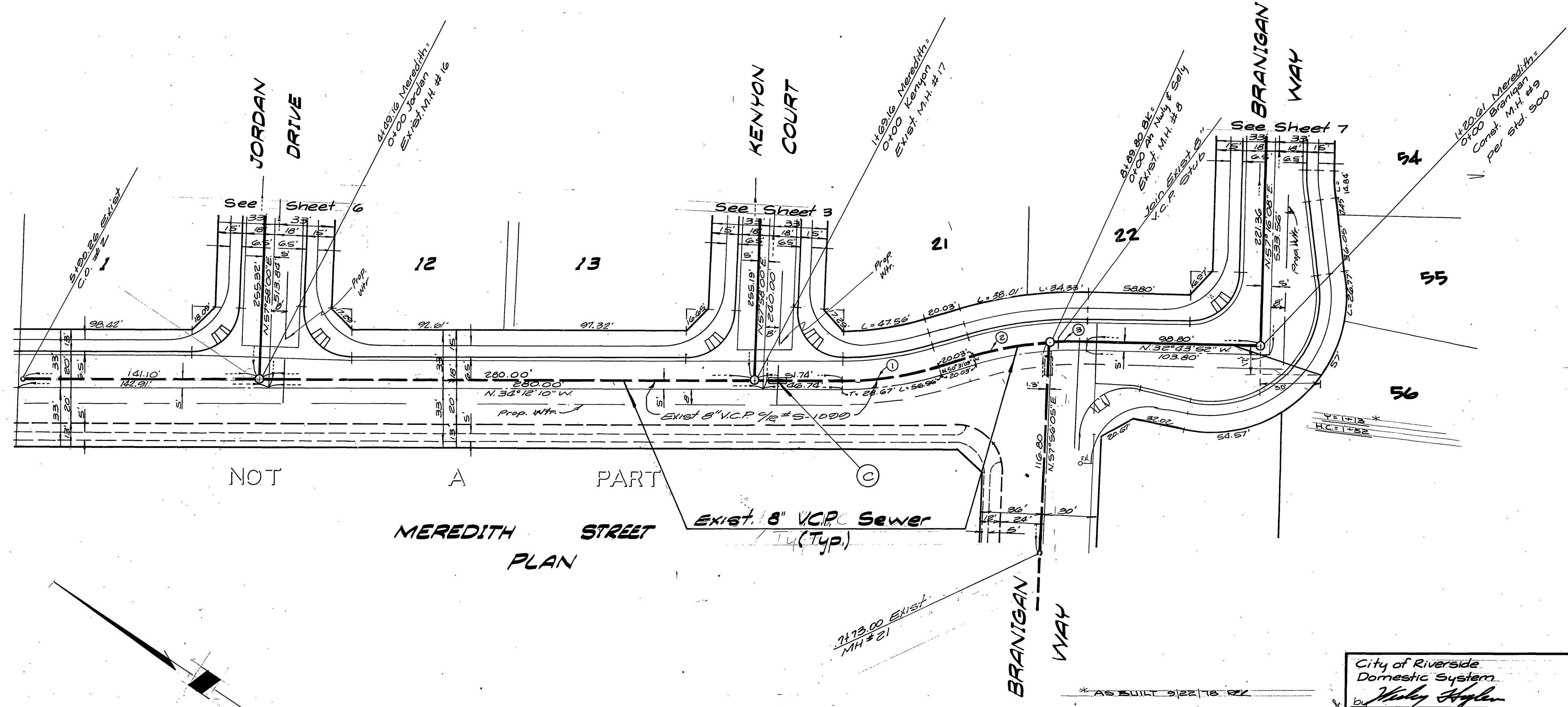
CITY OF RIVERSIDE, CALIFORNIA
PUBLIC WORKS DEPARTMENT
APPROVED BY *[Signature]* DATE *5/15/78*
PRINCIPAL ENGINEER
PARK DEPARTMENT
TRAFFIC DIVISION
CHIEF PUB. WKS. ENGR.

SEWER PLAN AND PROFILE
TRACT No. 8006
BAGGETT DRIVE
ARDSLEY COURT
SCALE: Horiz 1"=40', Vert 1"=4'

ACCOUNT No.
DRAWING NUMBER
5-1173
SHEET 4 OF 8
76-302-B



NOTE:
SEE SHEET 1 FOR GENERAL NOTES



CURVE DATA

No.	Δ	R	L	T
1	10° 18' 59"	195.00'	55.53'	27.96'
2	11° 41' 55"	205.00'	41.86'	21.00'
3	02° 05' 42"	205.00'	21.61'	10.91'

BENCH MARK:
A brass disc stamped F3-A 10" down in capped well at the intersection of Wells Ave. and Tyler St. Elevation 749.691

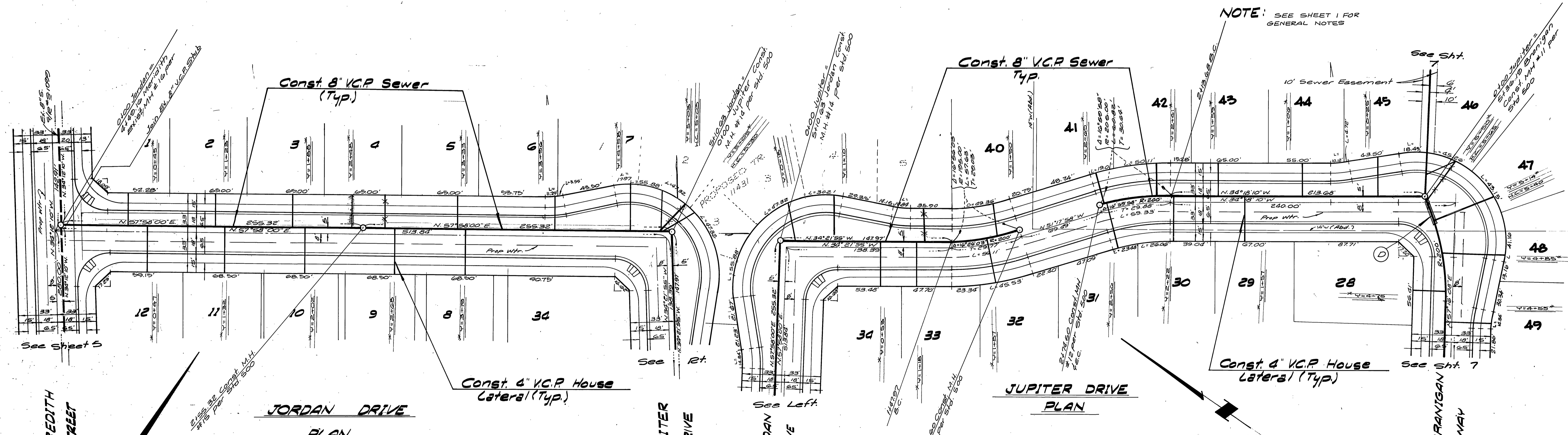
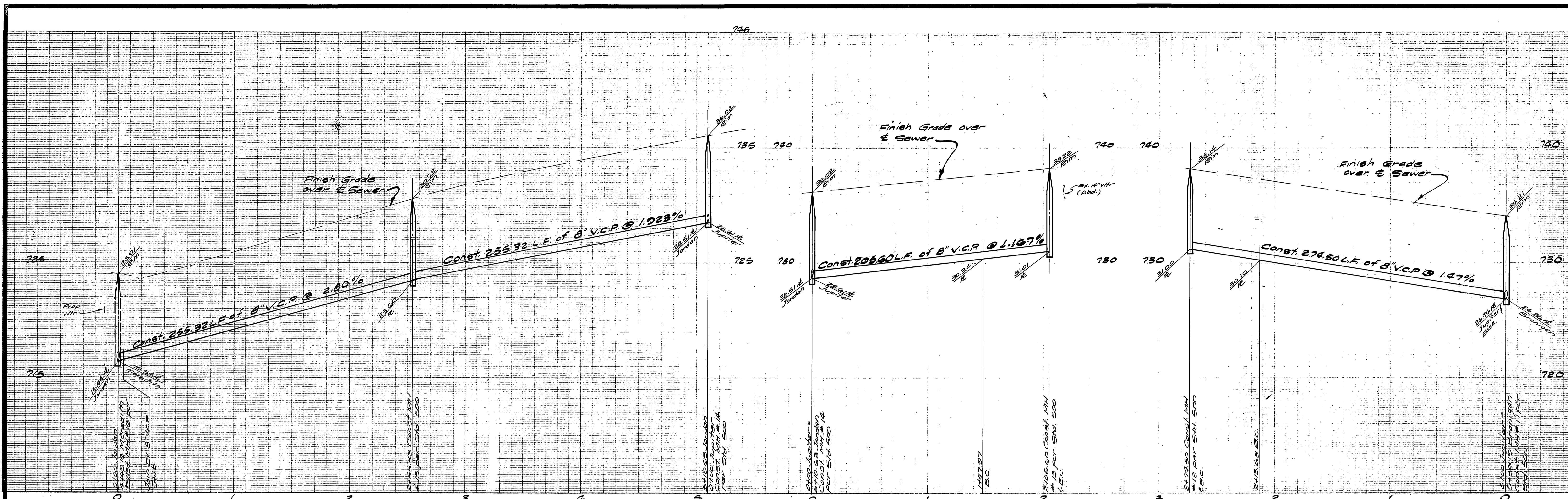
ALBERT A. WEBB ASSOCIATES
CIVIL ENGINEERS
RIVERSIDE, CALIFORNIA
APPROVED BY: [Signature] DATE: 8-16-77
R.E. No. 21834
DESIGNED BY: [Signature] DRAWN BY: [Signature] CHECKED BY: [Signature]

City of Riverside
Domestic System
by [Signature]
Chief Utilities Engineer - Water
11-777
Date

CITY OF RIVERSIDE, CALIFORNIA
PUBLIC WORKS DEPARTMENT
APPROVED BY: [Signature] DATE: 8/16/77
PRINCIPAL ENGINEER
TRAFFIC DIVISION
CHIEF PUB. WKS. ENGR.
DATE: 8/16/77

SEWER PLAN AND PROFILE
TRACT No. 8006
MEREDITH ST.
SCALE: Horiz. 1"=40' Vert. 1"=4'

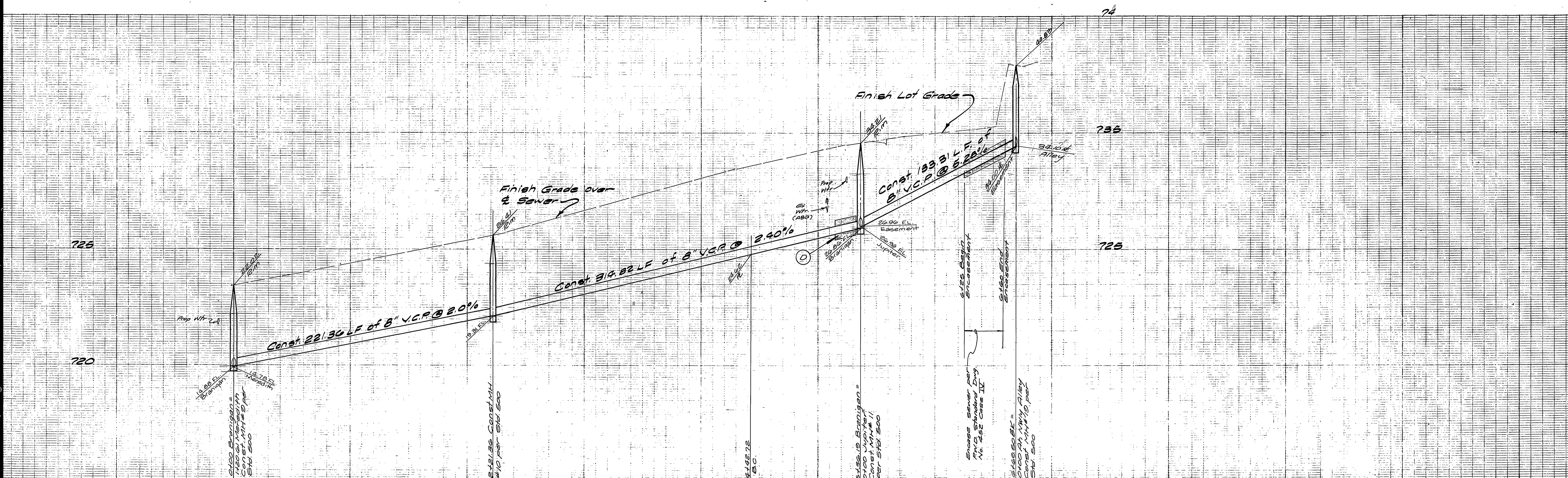
ACCOUNT No.
DRAWING NUMBER
5-1173
SHEET 5 OF 8
76-302-B



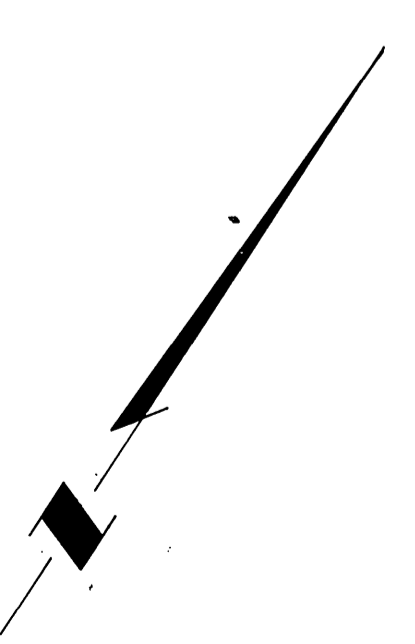
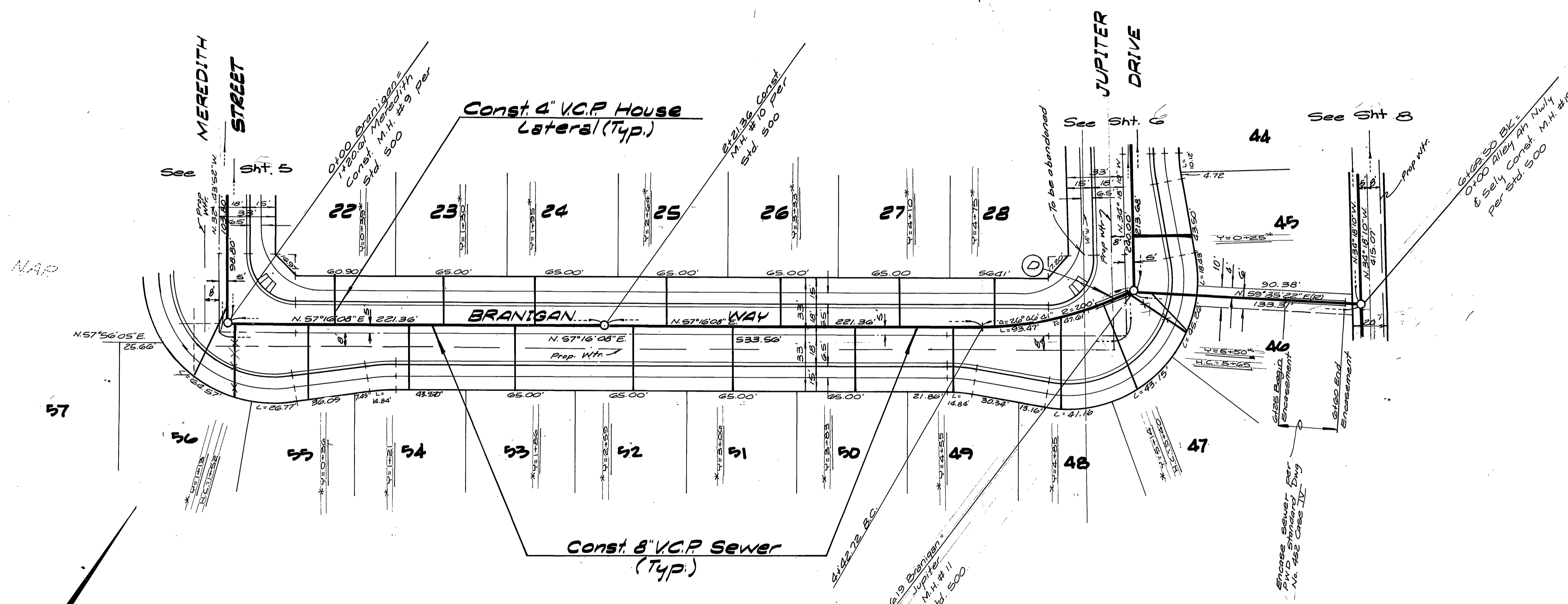
NOTE: SEE SHEET 1 FOR GENERAL NOTES

BENCH MARK:
A brass disc stamped F.A. 10' down in capped well at the intersection of Wells Ave and Tyler St. Elevation 749.81

ALBERT A. WEBB ASSOCIATES CIVIL ENGINEERS RIVERSIDE, CALIFORNIA APPROVED BY: <i>[Signature]</i> DATE: 8-16-77 R.E. No. 21804		CITY OF RIVERSIDE DOMESTIC SYSTEM Chief Utilities Engineer - Water 11-777 DATE: 5/14/78		SEWER PLAN AND PROFILE TRACT No. 8006 JORDAN DRIVE JUPITER DRIVE SCALE: Horiz 1"=20', Vert 1"=4'	ACCOUNT No. DRAWING NUMBER 5-1173 SHEET 6 OF 8 76-302-B
W.O. 76-302 FOR: Woodhaven Dev F.B. 1041 DESIGNED BY: RLT DRAWN BY: RH CHECKED BY:		CITY OF RIVERSIDE, CALIFORNIA PUBLIC WORKS DEPARTMENT APPROVED BY: <i>[Signature]</i> BY DATE: <i>[Signature]</i> PARK DEPARTMENT TRAFFIC DIVISION CHIEF PUB. WKS. ENGR.		DATE: 5/14/78	



NOTE: SEE SHEET 1 FOR GENERAL NOTES



BENCH MARK:
A brass disc stamped FB-A 10" down in capped well at the intersection of Wells Ave. and Tyler St. Elev.: 743.491

CITY OF RIVERSIDE DOMESTIC SYSTEM
by *Wally J. J. J.* Chief Utilities Engineer - Water Date 11-7-77

ALBERT A. WEBB ASSOCIATES
CIVIL ENGINEERS
RIVERSIDE, CALIFORNIA

APPROVED BY: *Albert A. Webb* DATE: 8-16-77
R.E. No. 21884

W.O. 76-302 FOR: Woodhaven Dev. F.B. 1041

MARK	REVISIONS	APPR.	DATE

DESIGNED BY: *ELT* DRAWN BY: *R.H.* CHECKED BY:

CITY OF RIVERSIDE, CALIFORNIA
PUBLIC WORKS DEPARTMENT

APPROVED BY: *Wally J. J. J.* DATE: 11-7-77
PRINCIPAL ENGINEER

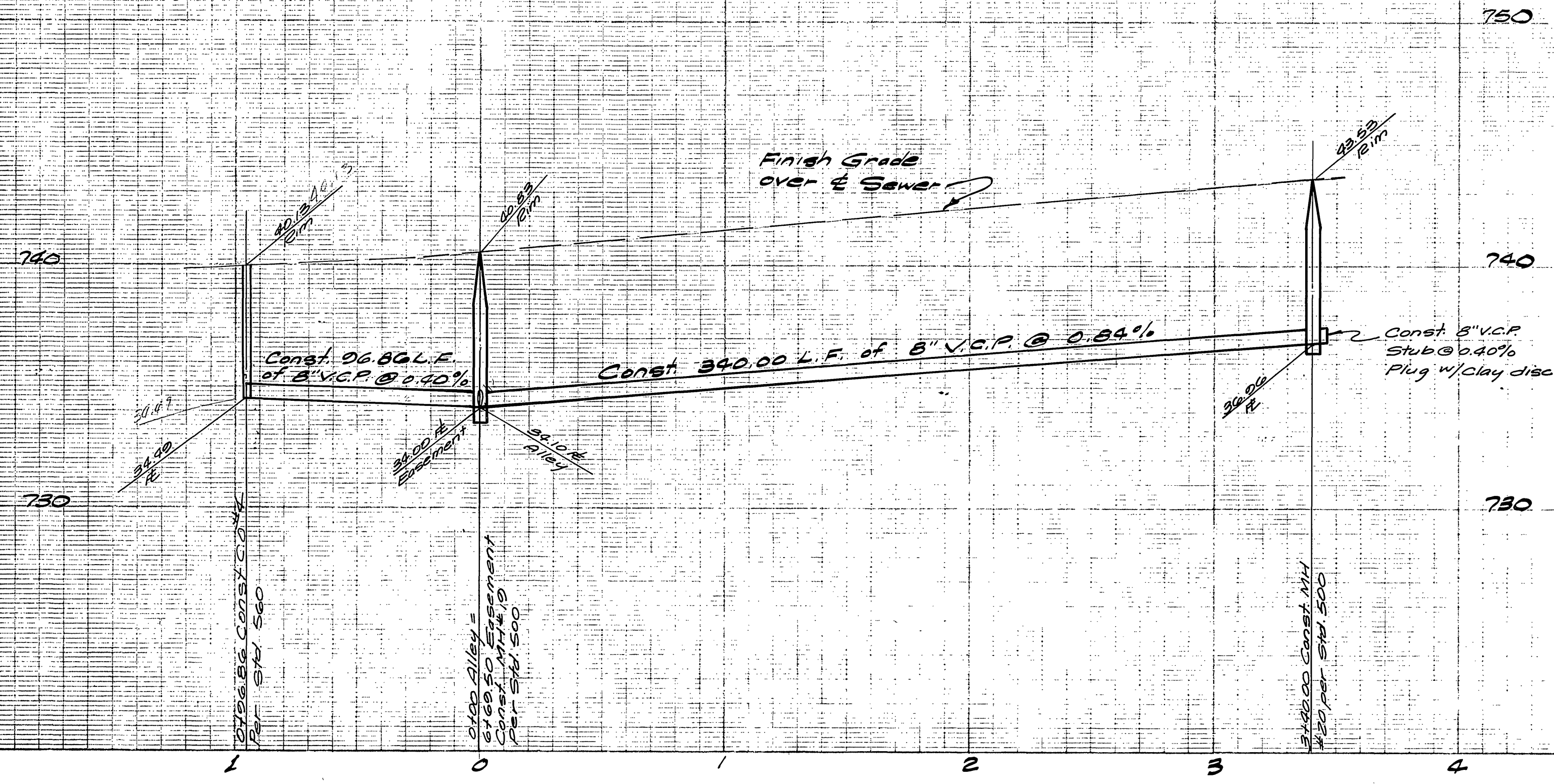
TRAFFIC DIVISION
CHIEF PUB. WKS. ENGR.

SEWER PLAN AND PROFILE

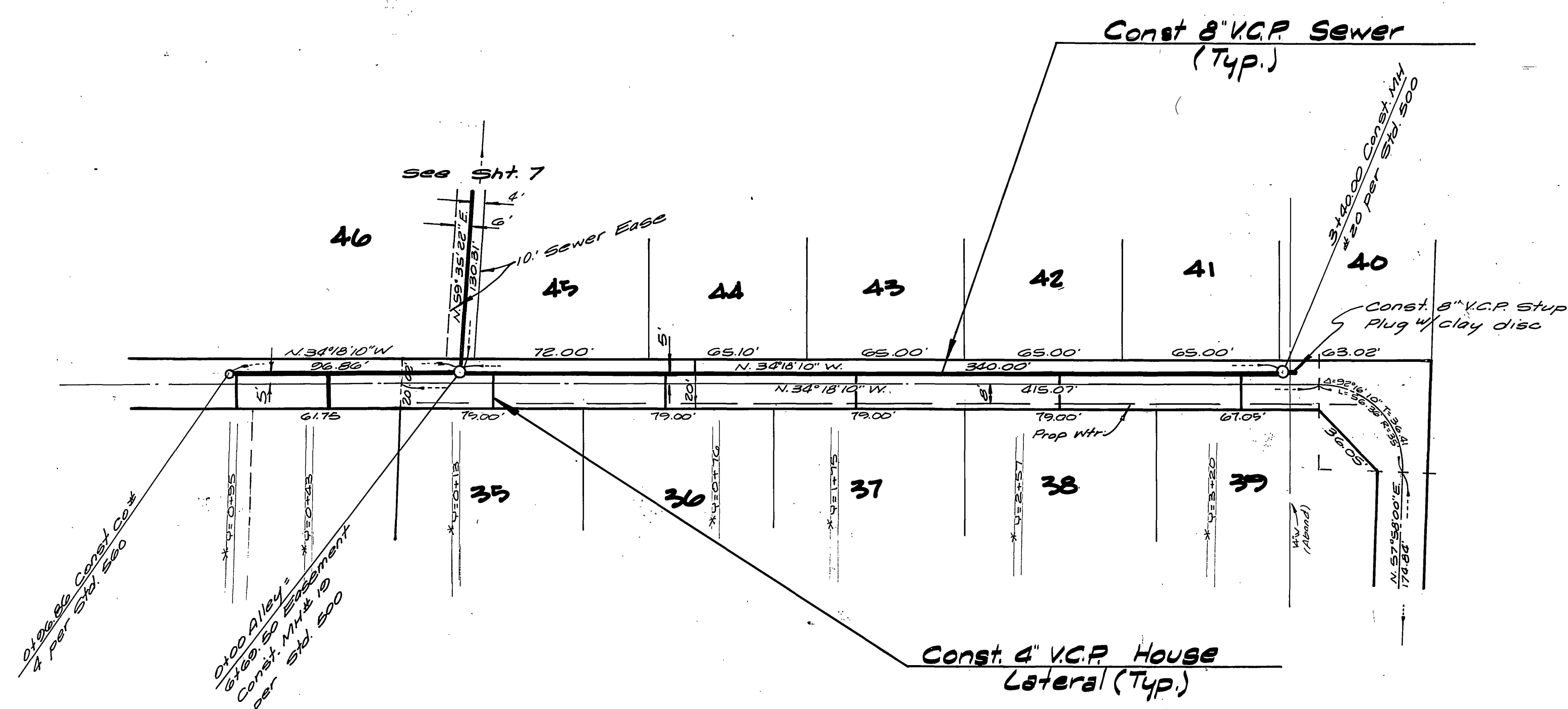
TRACT No. 8006
BRANTIGAN WAY

ACCOUNT No. 5-1173
SHEET 7 OF 8
76-302-B

SCALE: Horiz. 1"=40', Vert. 1"=4'



NOTE:
SEE SHEET 1 FOR GENERAL NOTES



BENCH MARK:
A brass disc stamped FB-A 10\"/>

CITY OF RIVERSIDE
DOMESTIC SYSTEM
11-7-77
DATE

ALBERT A. WEBB ASSOCIATES
CIVIL ENGINEERS
RIVERSIDE, CALIFORNIA
APPROVED BY *[Signature]* DATE 8-16-77
R.E. No. 21884

MARK	REVISIONS	APPR.	DATE

CITY OF RIVERSIDE, CALIFORNIA
PUBLIC WORKS DEPARTMENT
APPROVED BY *[Signature]* DATE 5/15/78
PRINCIPAL ENGINEER
TRAFFIC DIVISION
CHIEF PUB. WKS. ENGR.

SEWER PLAN AND PROFILE
TRACT No. 8006
ALLEY PLAN
SCALE: Horiz 1"=40', Vert 1"=4'

ACCOUNT No.
DRAWING NUMBER
5-1173
SHEET 8 OF 8
76-302-B