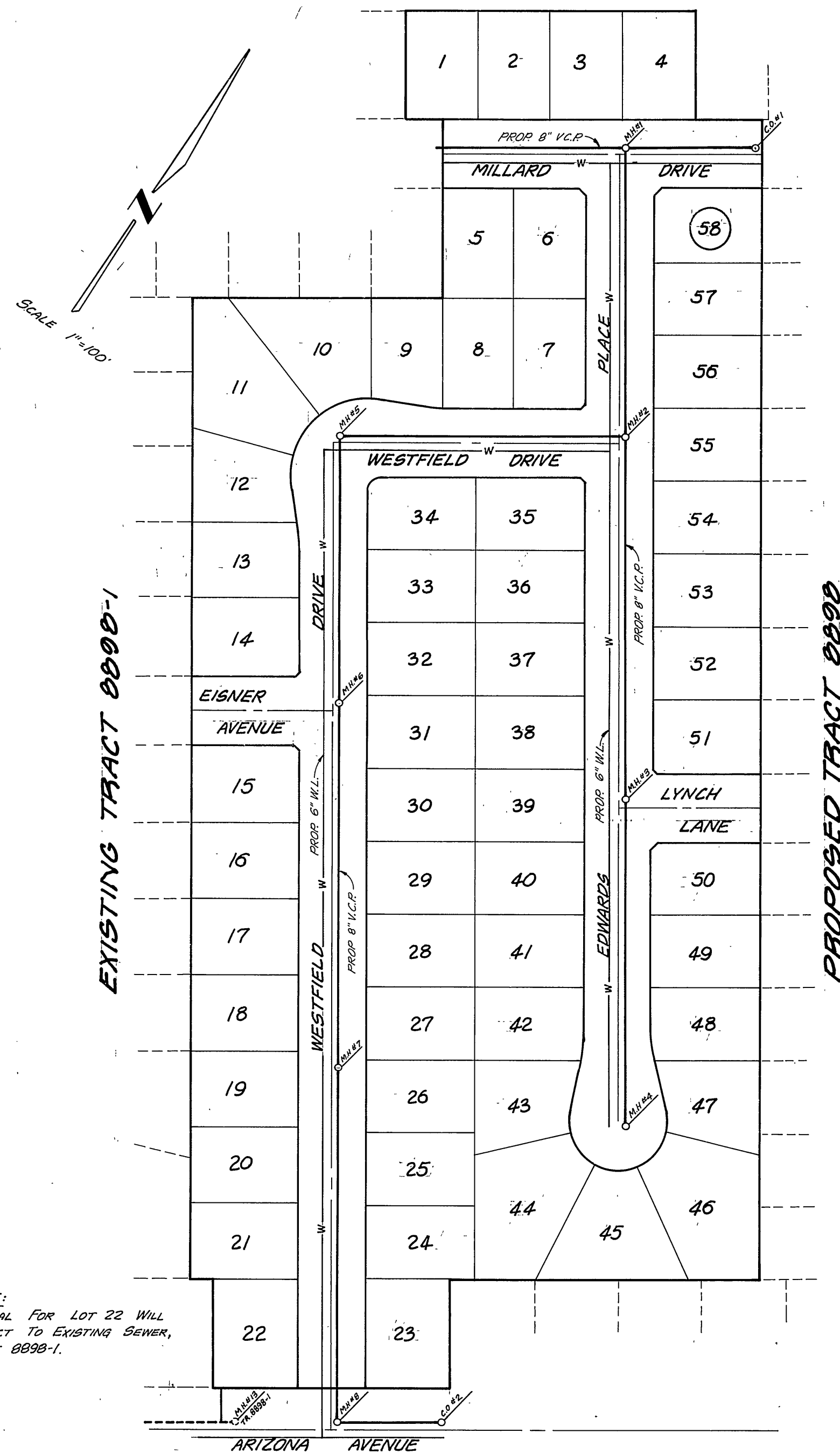
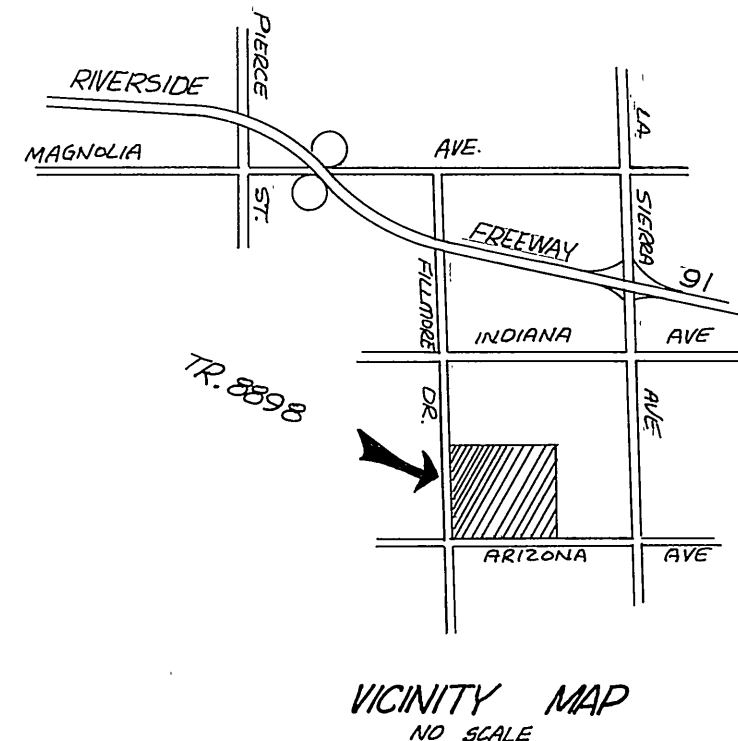


B.M. (23-0)
 FD PK. NAIL & TAG IN N'LY
 CEMENT BANK OF R.W.C.
 CANAL E'LY SIDE FILLMORE ST.
 ELEVATION = 797.286



- GENERAL NOTES:**
1. CONSTRUCTION SHALL BE IN ACCORDANCE WITH STANDARD SPECIFICATIONS FOR PUBLIC WORKS CONSTRUCTION, 1976 EDITION, AND CITY OF RIVERSIDE STD. DWGS.
 2. IT SHALL BE THE RESPONSIBILITY OF THE CONTRACTOR TO CLEAR THE RIGHT OF WAY IN ACCORDANCE WITH THE PROVISIONS OF LAW AS IT AFFECTS EACH UTILITY INCLUDING IRRIGATION LINES AND APPURTENANCES AND AT NO COST TO THE CITY.
 3. LOCATION OF WYES AND LATERALS TO BE DETERMINED AT THE DIRECTION OF THE OWNER.
 4. MANHOLE FRAMES AND COVERS TO BE SET TO PROPOSED PAVEMENT GRADES.
 5. LATERALS ARE 4" AND EXTEND TO THE PROPERTY LINE.
 6. PRIOR TO CONSTRUCTION OF SEWER, CONTRACTOR IS TO EXPOSE EXISTING SEWER AND CONTACT ENGINEER FOR VERIFICATION OF EXISTING ELEVATION.
 7. THE SEWER CONTRACTOR SHALL ADJUST MANHOLES TO FINAL GRADES AFTER PAVING IS COMPLETED.
 8. CONTRACTOR SHALL MAINTAIN TRAFFIC IN BOTH DIRECTIONS ON ARIZONA AVENUE AT ALL TIMES DURING CONSTRUCTION.
 9. A PLUG SHALL BE INSTALLED AND WILL REMAIN IN PLACE WHERE THE NEW SEWER CONNECTS WITH THE EXISTING SEWER UNTIL THE NEW SEWER IS ACCEPTED BY THE CITY.

- CONSTRUCTION NOTES**
- ① CONSTRUCT MANHOLES PER CITY OF RIVERSIDE PLAN NO. 500.
 - ② CONSTRUCT CLEANOUT PER CITY OF RIVERSIDE PLAN NO. 500.
 - ③ CONSTRUCT LATERALS PER CITY OF RIVERSIDE PLAN NO. 500.
 - ④ "ENCASE SEWER MAIN 4.5' EACH SIDE OF WATER MAIN CROSSING WITH TYPE "C" CONCRETE ENCASUREMENT PER PUBLIC UTILITY DWG. C.W.D.-023."

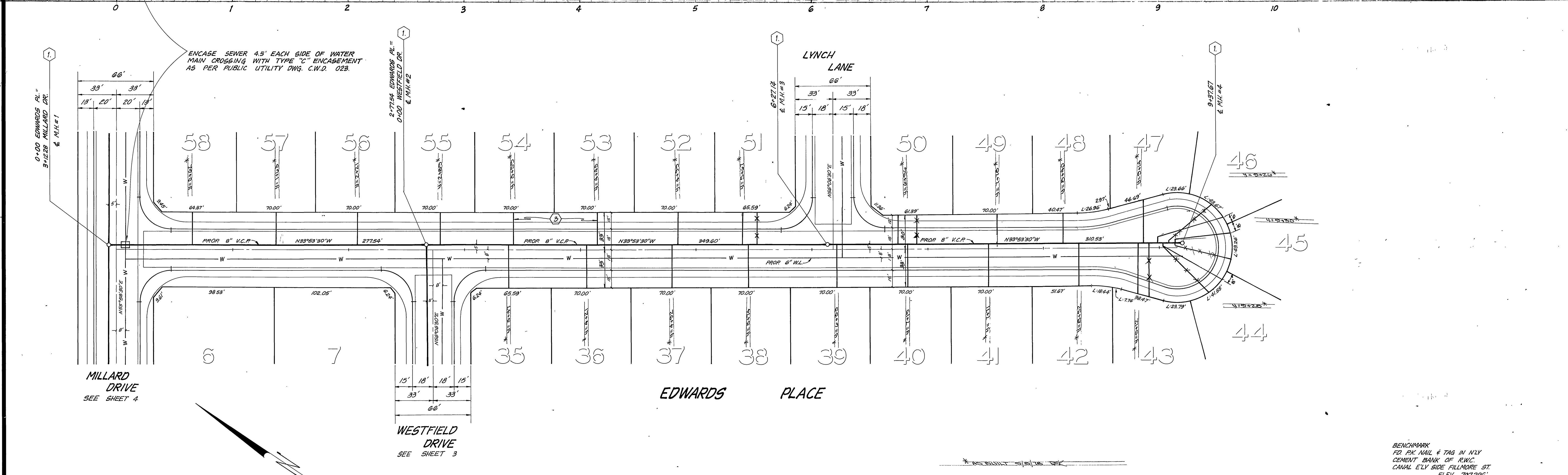
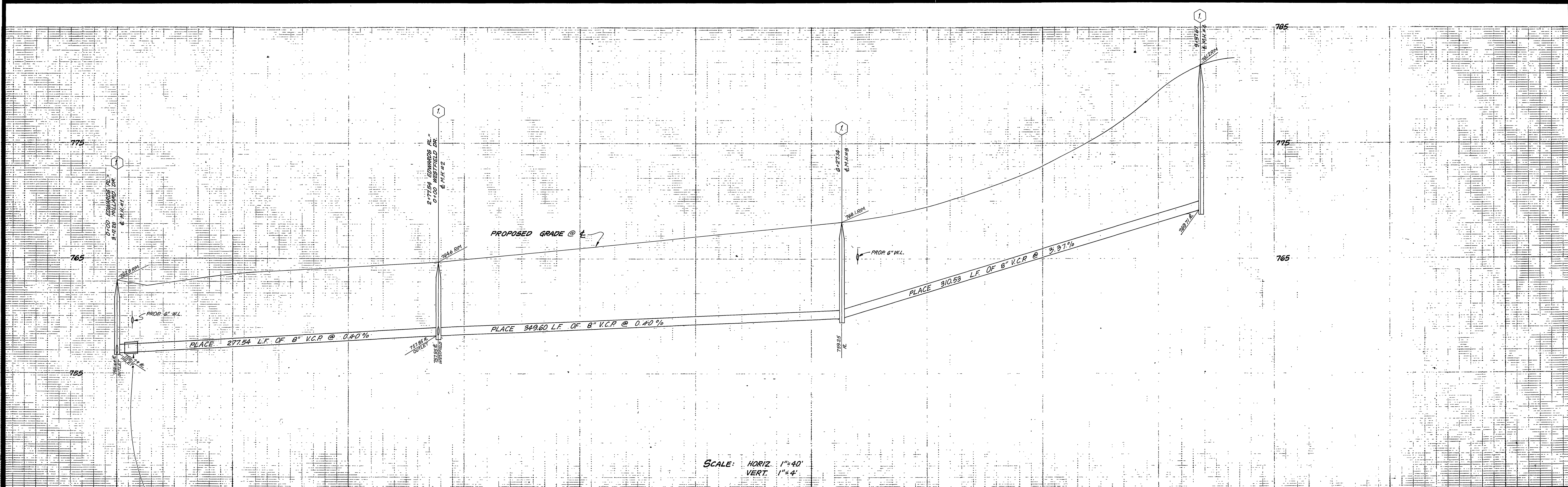
"The private engineer signing these plans is responsible for accuracy and acceptability of the work hereon. In the event of discrepancies arising during construction the private engineer signing the plans, shall be responsible for determining an acceptable solution and revising the plans for approval by the City."

NOTE:
 LATERAL FOR LOT 22 WILL
 CONNECT TO EXISTING SEWER,
 TRACT 8898-1.

NOTICE TO CONTRACTOR:
 THE EXISTENCE AND LOCATION OF ANY UNDERGROUND UTILITY PIPES OR STRUCTURES SHOWN ON THESE PLANS ARE OBTAINED BY A SEARCH OF AVAILABLE RECORDS. TO THE BEST OF OUR KNOWLEDGE THERE ARE NO EXISTING UTILITIES EXCEPT AS SHOWN ON THESE PLANS. THE CONTRACTOR IS REQUIRED TO TAKE PRECAUTIONARY MEASURES TO PROTECT THE UTILITY LINES SHOWN AND OTHER LINES NOT OF RECORD OR NOT SHOWN ON THESE PLANS.

* AS BUILT 5/15/78

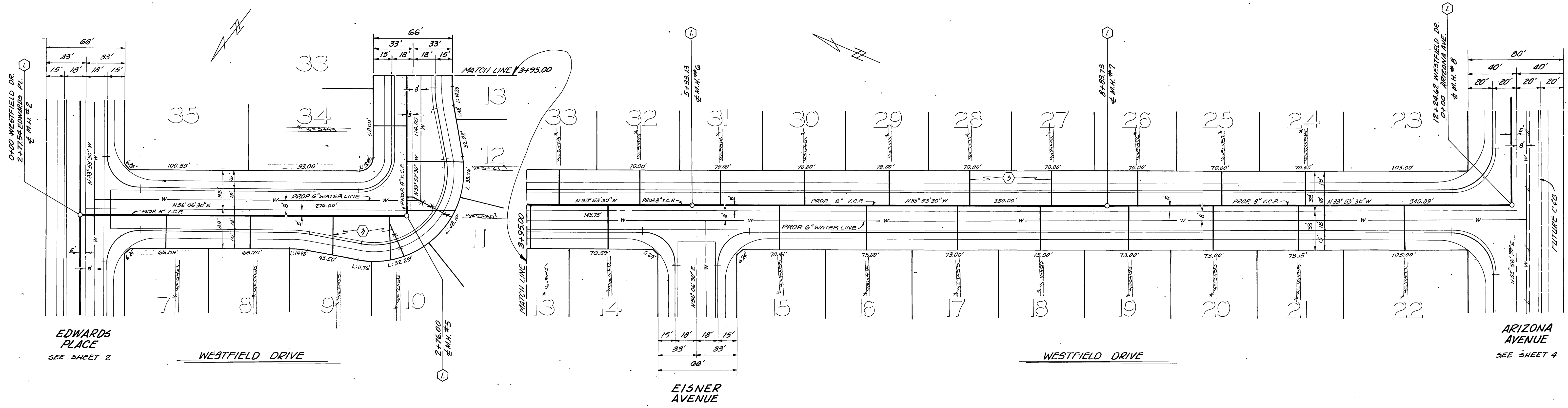
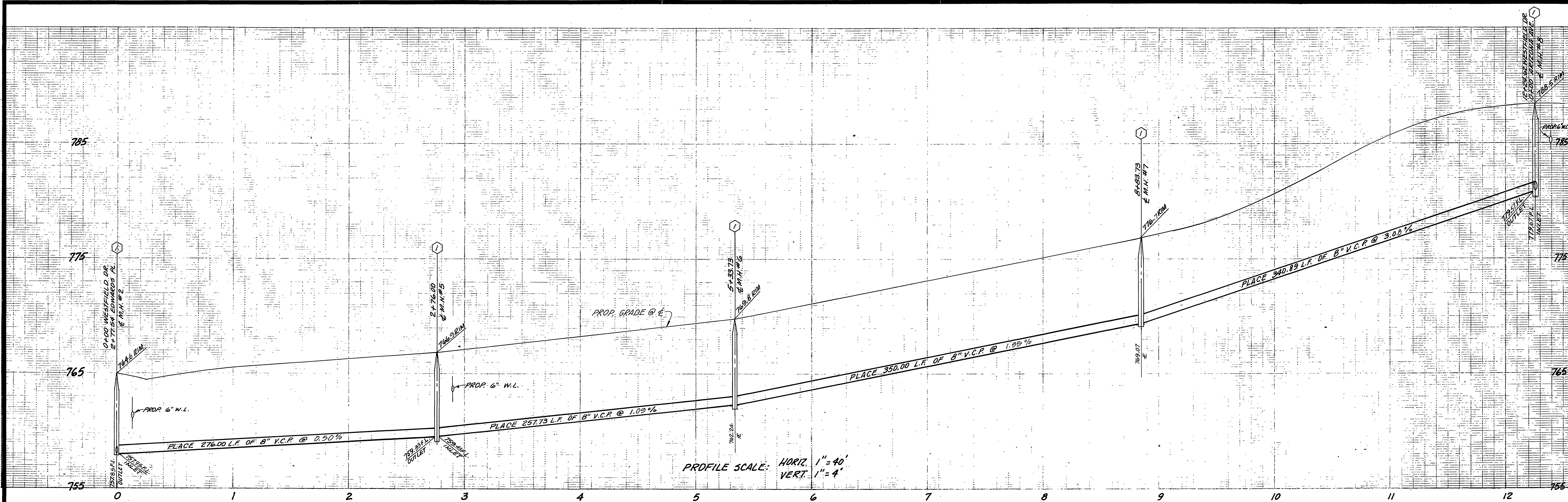
C.C. CITY OF RIVERSIDE, DOMESTIC SYSTEM By: <i>W. A. Allen</i> 9-13-77 CHIEF UTILITIES ENGINEER, WATER DATE	J. F. DAVIDSON ASSOCIATES CIVIL ENGINEERS - SURVEYORS - PLANNERS RIVERSIDE, CALIFORNIA APPROVED BY: <i>John W. City</i> DATE 8/2/77 R.E. No. 17,550	CITY OF RIVERSIDE, CALIFORNIA DEPARTMENT OF PUBLIC WORKS APPROVED BY: <i>[Signature]</i> DATE 6/15/78 PRINCIPAL ENGINEER PARK DEPARTMENT TRAFFIC DIVISION CHIEF P. W. ENGR.	SEWER PLANS & PROFILE TRACT NO. 8898-2 TITLE SHEET PROJECT NO. 5-1174 SHEET 1 OF 4 FILE NO. 5546
	W.D. 5057 FOR: Murray Dev. Co. F.B.	DESIGNED BY: C.K. DRAWN BY: C.K. CHECKED BY: C.K.	DATE 6/15/78



BENCHMARK
 PD. PK. NAIL & TAG IN NLY
 CEMENT BANK OF RWG.
 CANAL ELY SIDE FILLMORE ST.
 ELEV. 797.266'

* AS BUILT 11-28-79 B.D.

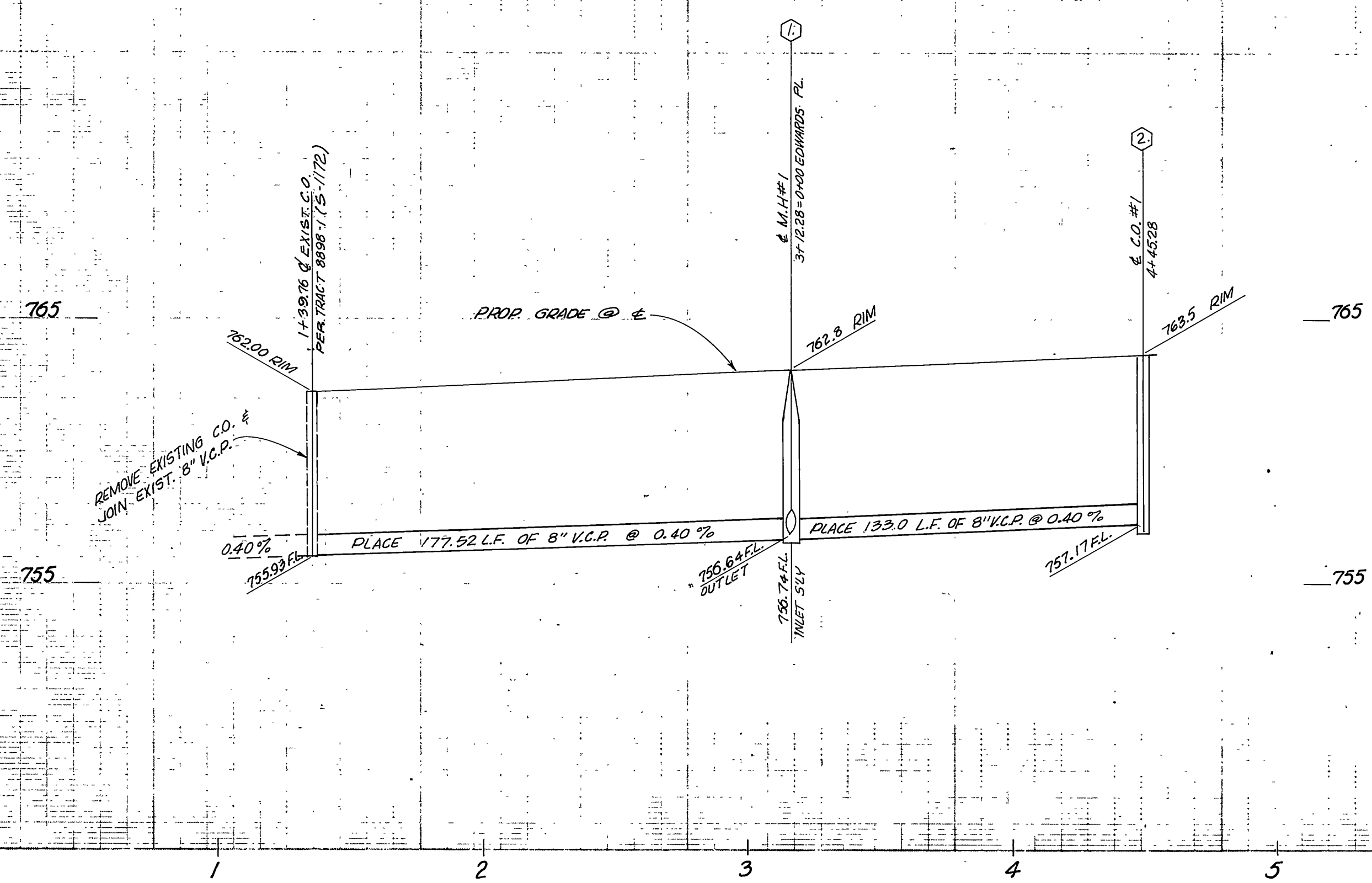
CITY OF RIVERSIDE, DOMESTIC SYSTEM APPROVED BY: <i>[Signature]</i> DATE: 8/2/77 R.E. No. 17,550 CHIEF UTILITIES ENGINEER, WATER	J. F. DAVIDSON ASSOCIATES CIVIL ENGINEERS - SURVEYORS - PLANNERS RIVERSIDE, CALIFORNIA APPROVED BY: <i>[Signature]</i> DATE: 8/2/77 R.E. No. 17,550 DESIGNED BY: C.H. DRAWN BY: C.H. CHECKED BY: C.H.	CITY OF RIVERSIDE, CALIFORNIA DEPARTMENT OF PUBLIC WORKS APPROVED BY: <i>[Signature]</i> DATE: 6/15/78 PRINCIPAL ENGINEER PARK DEPARTMENT TRAFFIC DIVISION CHIEF P. W. ENGR.	SEWER PLANS & PROFILE TRACT NO. 8898-2 EDWARDS PLACE	PROJECT NO. 8-1174 SHEET 2 OF 4 FILE NO. 5546
	HORIZ. SCALE: 1" = 40' VERT. SCALE: 1" = 4'			



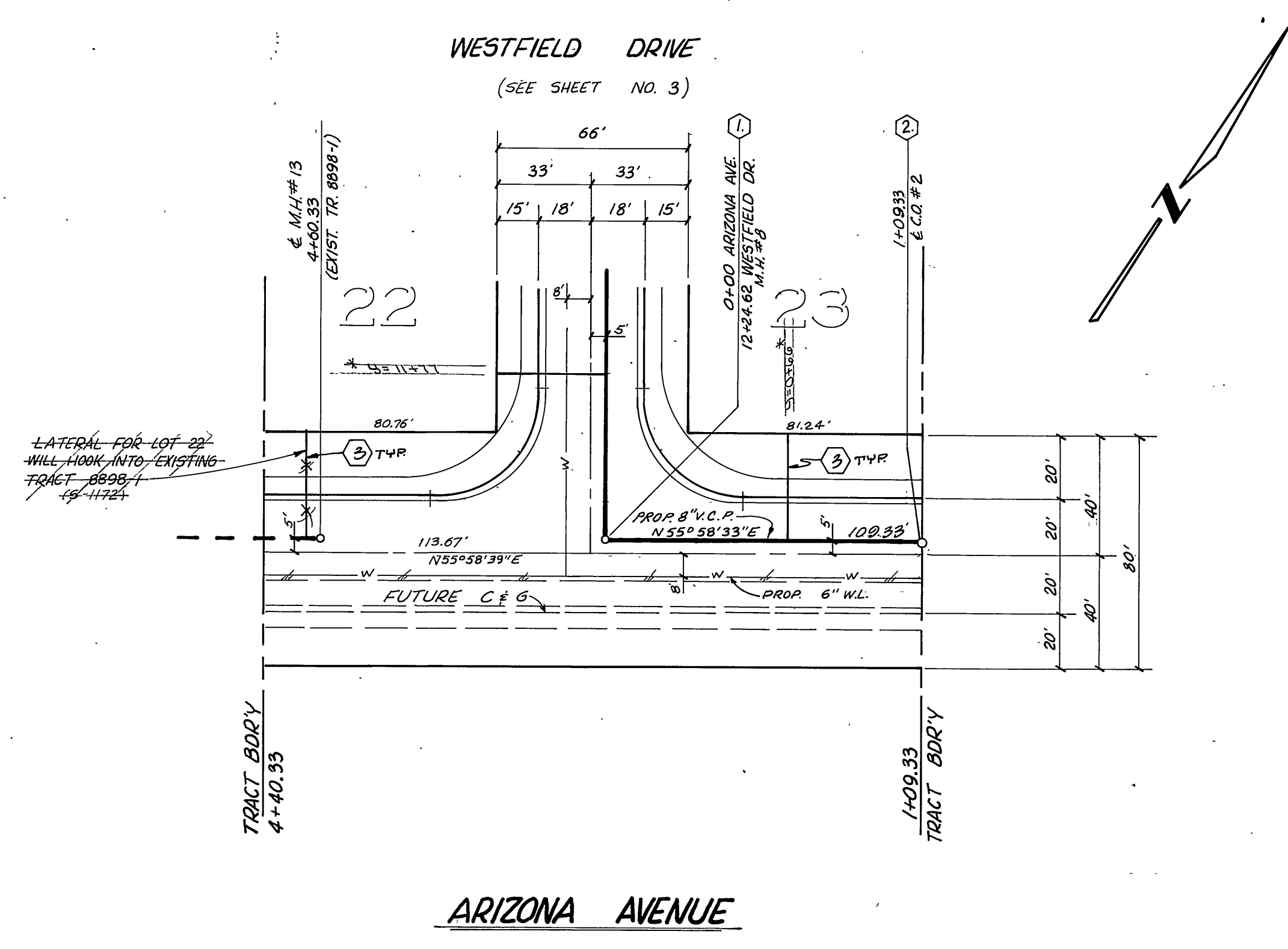
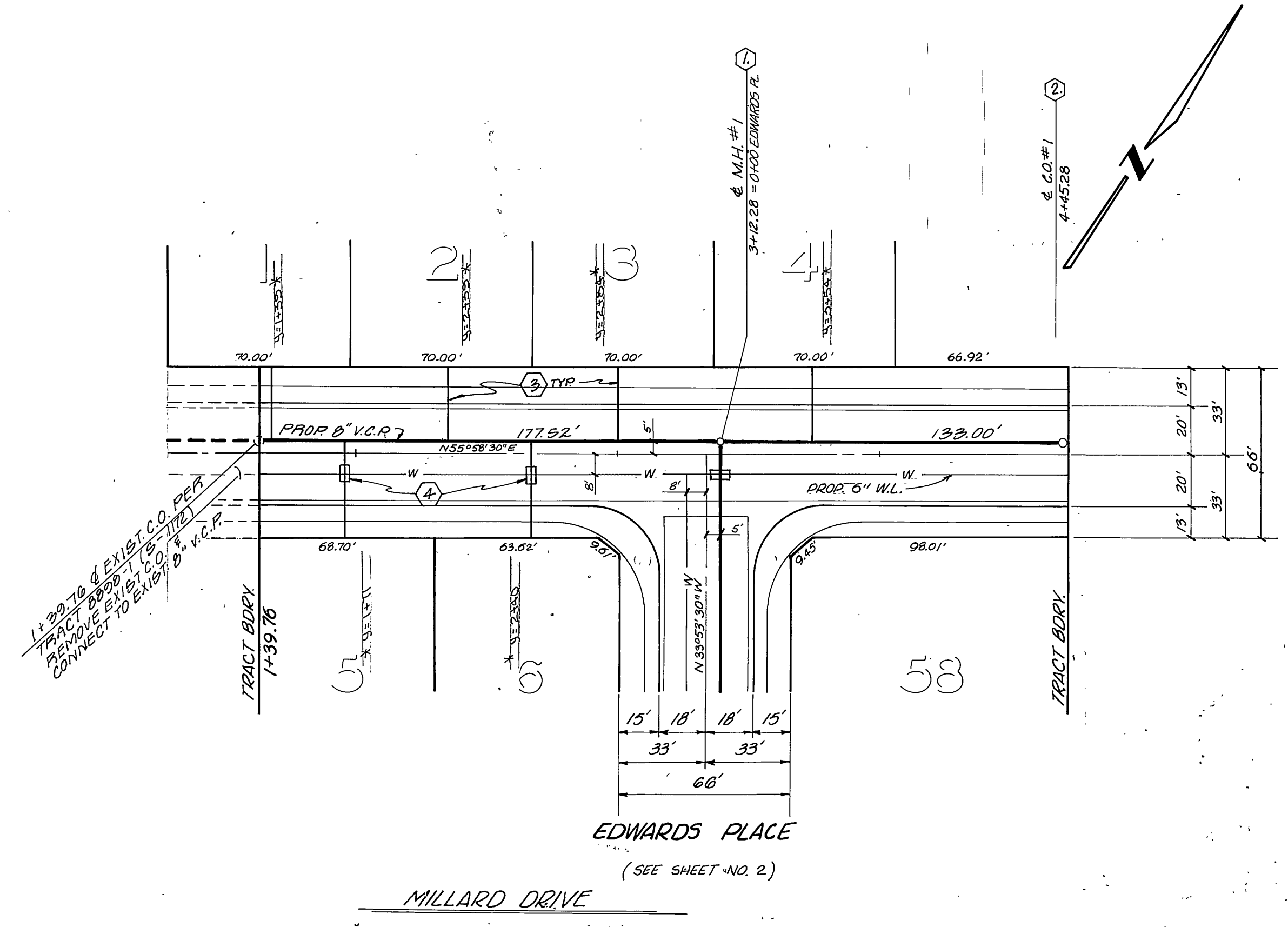
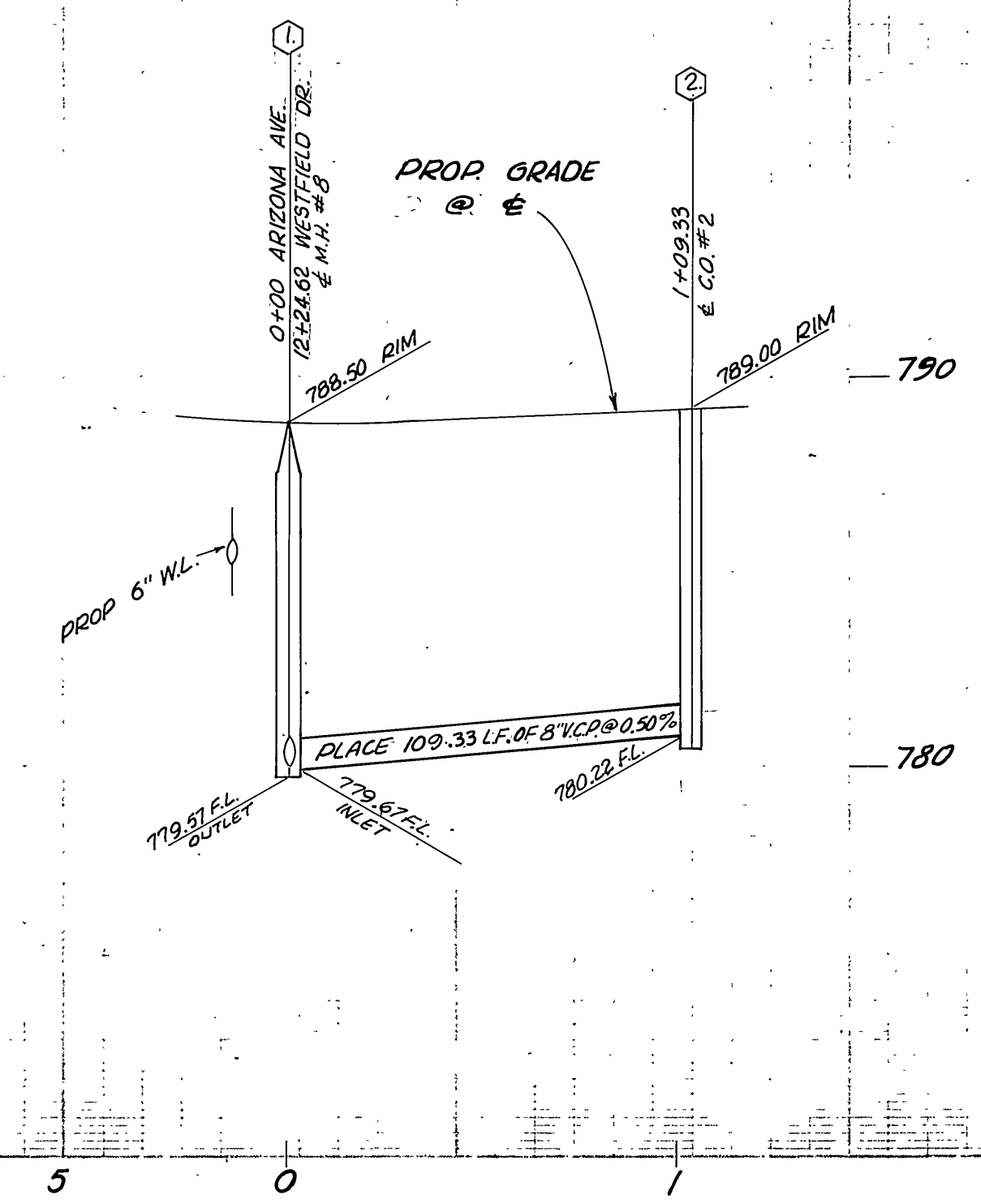
BENCHMARK
 FD. PK. NAIL & TAG IN NLY
 CEMENT BANK OF R.W.C.
 CANAL ELY SIDE FILLMORE ST.
 ELEV. 797.286'

* AS BUILT 11-28-79 B.P.

C.C. CITY OF RIVERSIDE, DOMESTIC SYSTEM By: <i>Wesley Hefner</i> 9-13-77 CHIEF UTILITIES ENGINEER, WATER DATE	J. F. DAVIDSON ASSOCIATES CIVIL ENGINEERS - SURVEYORS - PLANNERS RIVERSIDE, CALIFORNIA APPROVED BY: <i>John W. Curtis</i> DATE: 8/2/77 R.E. No. 17,550	CITY OF RIVERSIDE, CALIFORNIA DEPARTMENT OF PUBLIC WORKS APPROVED BY: <i>Robert L. Walker</i> DIRECTOR OF PUBLIC WORKS DATE: 6/15/78	SEWER PLANS & PROFILE TRACT NO. 8898-2 WESTFIELD DRIVE	PROJECT NO. S-1174 SHEET 3 OF 4 FILE NO. 5546
	W.D. 5057 FOR: MURRAY DEV. CO. F.B. DESIGNED BY: CH. DRAWN BY: C.F. CHECKED BY: C.M.	REVISIONS APPR. DATE	HORIZ. SCALE: 1" = 40' VERT. SCALE: 1" = 4'	



SCALE:
HORIZ. 1" = 40'
VERT. 1" = 4'



* AS BUILT 11-28-79 B.P.
B.M. FOUND PK. NAIL & TAG IN NLY CEMENT BANK OF TRING. CANAL ELY. SIDE FILLMORE ST. ELEV = 797.286'

CITY OF RIVERSIDE, DOMESTIC SYSTEM BY: <i>Halcy Styler</i> 9-13-77 CHIEF UTILITIES ENGINEER, WATER	J. F. DAVIDSON ASSOCIATES CIVIL ENGINEERS - SURVEYORS - PLANNERS RIVERSIDE, CALIFORNIA APPROVED BY: <i>John W. City</i> DATE: 8/2/77 R.E. No. 17,550	CITY OF RIVERSIDE, CALIFORNIA DEPARTMENT OF PUBLIC WORKS APPROVED BY: <i>Robert H. Walle</i> DATE: 6/15/78 DIRECTOR OF PUBLIC WORKS	SEWER PLANS & PROFILE TRACT NO. 8898-2 ARIZONA AVENUE MILLARD DRIVE	PROJECT NO. 3-1174 SHEET 4 OF 4
	W.O. 3057 FOR: MURRAY DEV. CO. F.B.	DESIGNED BY: C.H. DRAWN BY: C.F. CHECKED BY: C.H.	HORIZ. SCALE: 1" = 40' VERT. SCALE: 1" = 4'	FILE NO. 5546