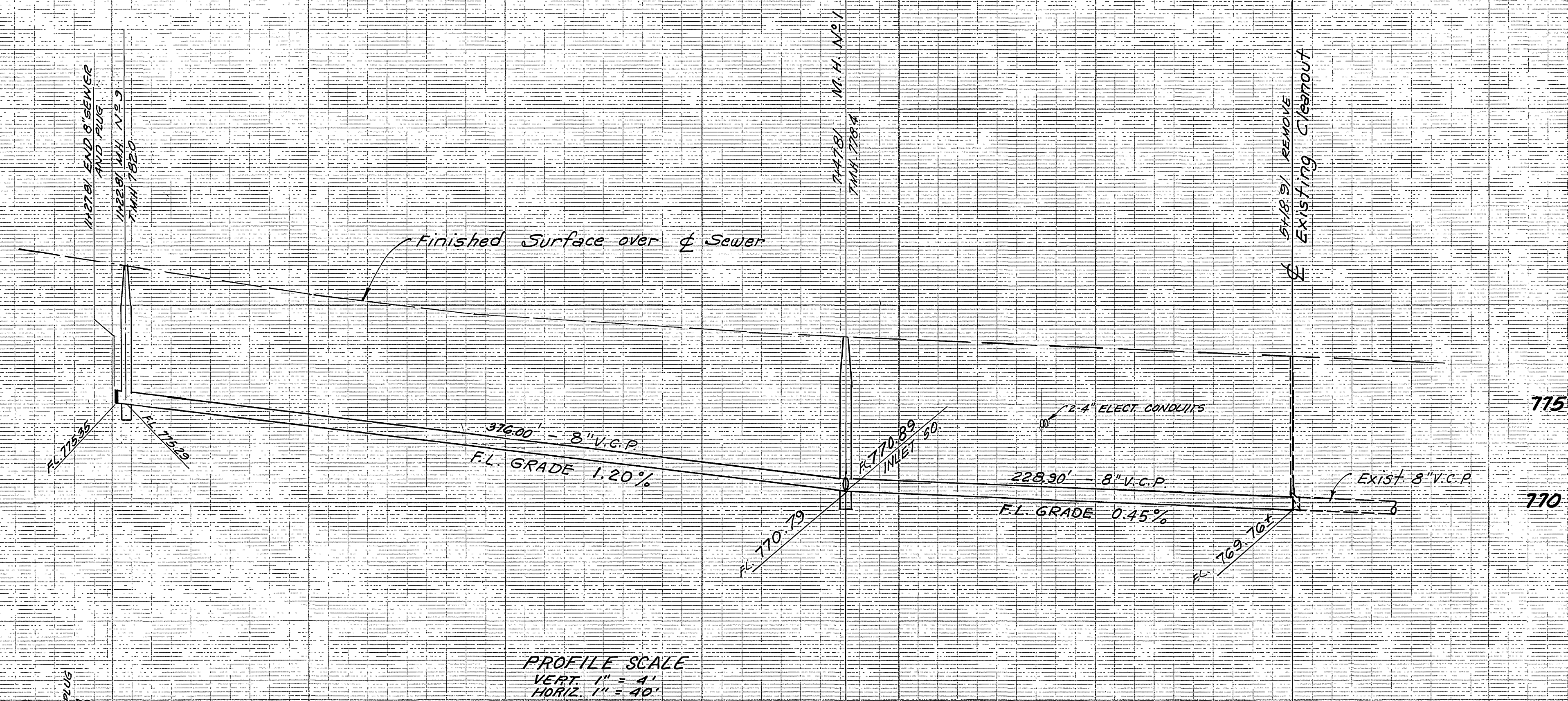
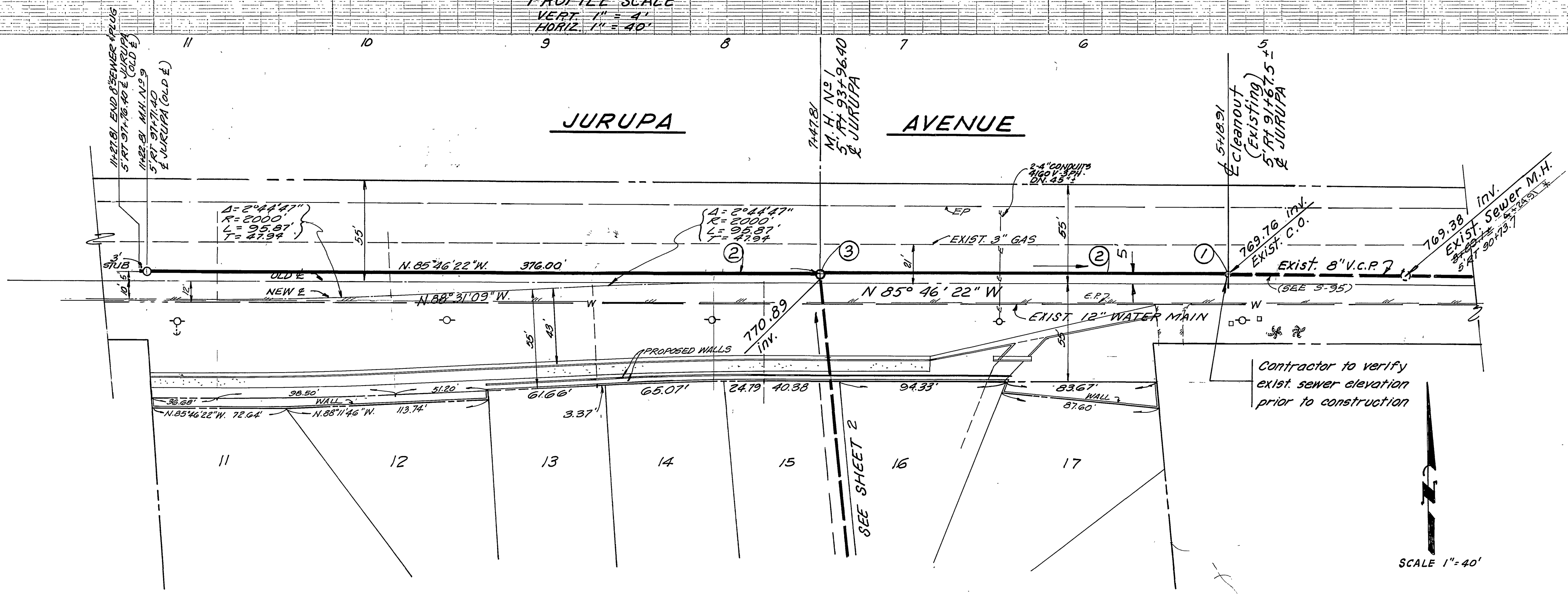


785
780



PROFILE SCALE
VERT. 1" = 4'
HORIZ. 1" = 40'

JURUPA AVENUE



- Construction Notes**
- ① Remove Exist. C.O. - Verify Inv. in Field.
 - ② Constr. 8" V.C.P. Sewer Main
 - ③ Constr. M.H. per Std. Dwg. No. 500

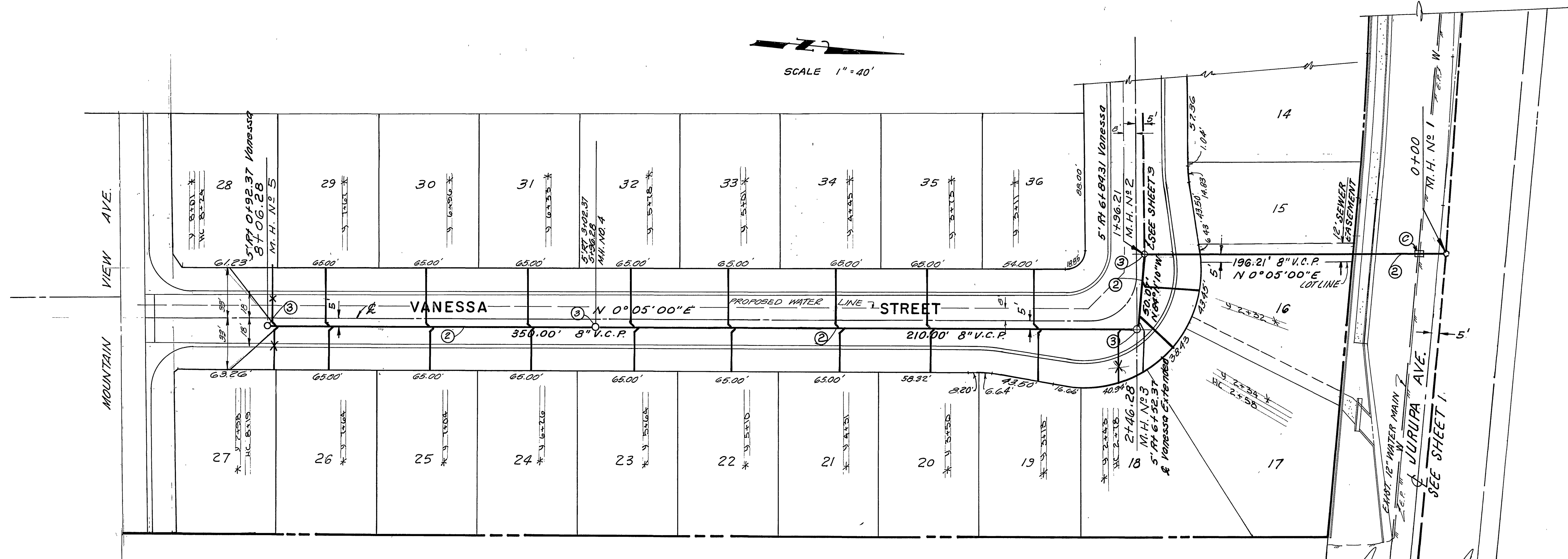
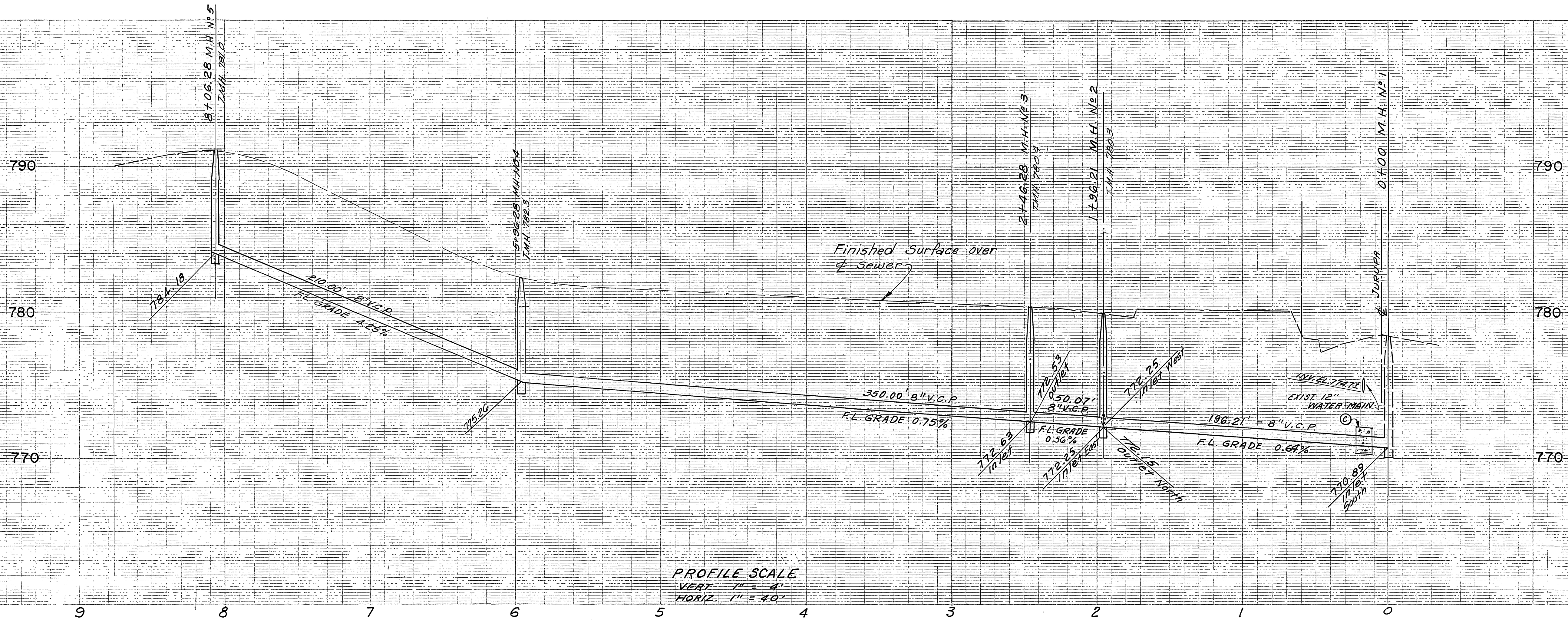
GENERAL NOTES

1. Construction shall be in accordance with the City of Riverside Std. Drawings, and Std. Specifications for Public Works Construction, 1976 Edition.
2. It shall be the responsibility of the Contractor to clear the Right of Way in accordance with the provisions of Law as it affects each utility including irrigation lines and appurtenances and at no cost to the City.
3. Manhole covers shall be brought to finish grade by the sewer contractor after paving.
4. Pipe shall be Bedded per Case I, Std. Dwg. No. 452 unless otherwise specified on the plans.
5. Location of Wyes and Laterals to be determined in the field by the developer. AVOID CONFLICT WITH PROPOSED AND/OR EXISTING FACILITIES.
6. All Stubs & Laterals to be constructed in accordance with Std. Dwg. No. 562. Stubs shall be plugged & capped.
7. The private engineer signing these plans is responsible for assuring the accuracy and acceptability of the work hereon. In the event of discrepancies arising during construction as a result of errors or omissions, the private engineer shall be responsible for determining an acceptable solution and revising the plans for approval by the City.
8. A PLUG SHALL BE INSTALLED AND WILL REMAIN IN PLACE WHERE THE NEW SEWER CONNECTS WITH THE EXISTING SEWER UNTIL THE NEW SEWER IS ACCEPTED BY THE CITY.

SCALE 1" = 40'

BENCH MARK ELEV. 790.235'
PK. NAIL & TAG IN N.W. CB. RET. @
JURUPA AVE. & FREMONT ST. PER
C.R.F.B. 789/17 (H4-B)

CITY OF RIVERSIDE DOMESTIC WATER SYSTEM	CHARLES HAVER AND ASSOCIATES	CITY OF RIVERSIDE, CALIFORNIA DEPARTMENT OF PUBLIC WORKS	SEWER PLAN AND PROFILE	PROJECT NO.
			JURUPA AVENUE	5-1175
PREPARED UNDER THE SUPERVISION OF Charles J. Haver CHIEF UTILITIES ENGINEER, WATER	DATE 7-22-77	APPROVED BY [Signature] DIRECTOR OF PUBLIC WORKS	TRACT NO. 9662	SHEET 1 OF 3
DESIGNED BY	DRAWN BY	CHECKED BY	STA. 0 + 00.00 TO STA. 6 + 03.90	FILE NO. 5586 (77/19)



ENCASE SEWER 4.5' EACH SIDE OF WATER CROSSING WITH TYPE "C" ENCASEMENT AS PER PUBLIC UTILITY DWG. 023.

- CONSTRUCTION NOTES**
- ② Const. 8" V.C.P. Sewer Main
 - ③ Const. M.H. per Std. Dwg. No. 500.

BENCH MARK ELEV. 790.235
R.K. NAIL & TAG IN N.W. COR. RET. @
JURUPA AVE. & FREMONT ST. PER
C.R.F.B. 739/47 (H4-B)

CITY OF RIVERSIDE DOMESTIC WATER SYSTEM <i>Charles Haver</i> CHIEF UTILITIES ENGINEER, WATER	CHARLES HAVER AND ASSOCIATES PREPARED UNDER THE SUPERVISION OF <i>Charles Haver</i> CHARLES HAVER RCE 9053	CITY OF RIVERSIDE, CALIFORNIA DEPARTMENT OF PUBLIC WORKS APPROVED BY: <i>Robert C. Velle</i> OFFICE ENGINEER PARK DEPARTMENT TRAFFIC DIVISION ASSISTANT CITY ENG. DATE 5/24/78	SEWER PLAN AND PROFILE TRACT NO. 9662 VANESSA STREET STA. 0+00.00 TO STA. 8+06.28		PROJECT NO. S-1175
			HORIZ. SCALE: 1" = 40' VERT. SCALE: 1" = 4'		SHEET <u>2</u> OF <u>3</u> FILE NO. 5586 (7/10)

