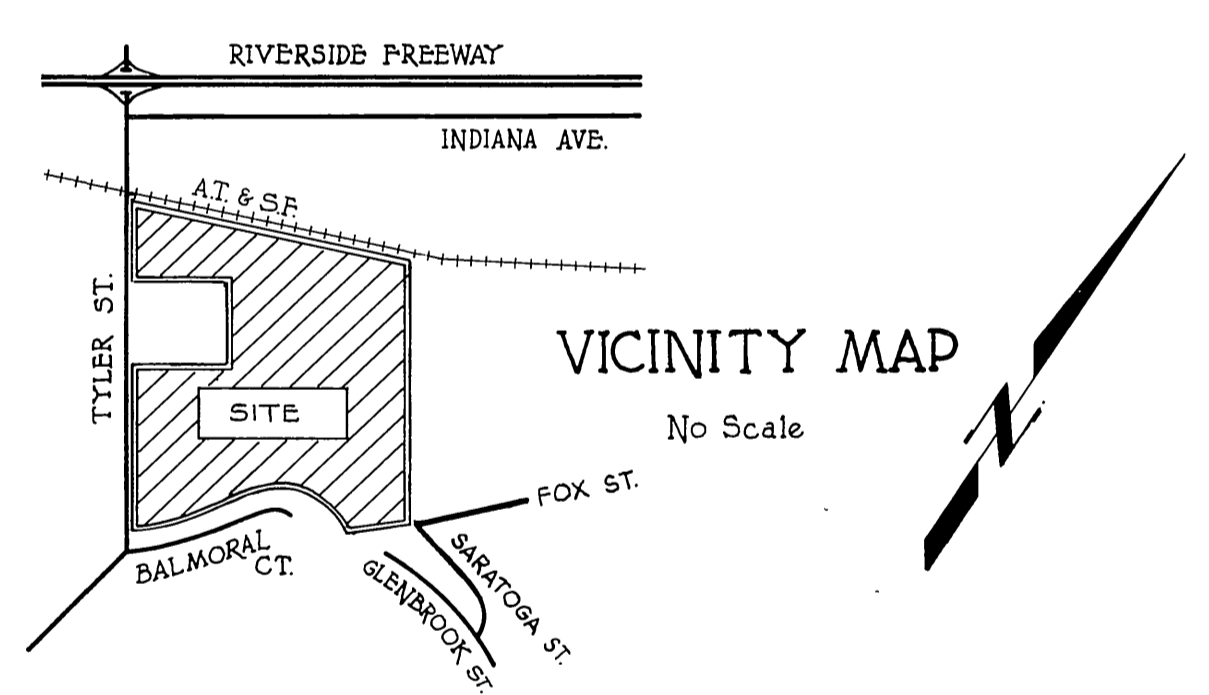


- GENERAL NOTES:**
1. Construction shall be in accordance with standard specifications for Public Works Construction, 1976 Edition, and City of Riverside Std. Dwg.
  2. It shall be the responsibility of the contractor to clear the right of way in accordance with the provisions of law as it affects each utility including irrigation lines and appurtenances and at no cost to the city.
  3. Location of wyes and laterals to be determined at the direction of the owner.
  4. Manhole frames and covers to be set to proposed pavement grades.
  5. Laterals are 4" and extend to the property line.
  6. Prior to construction of sewer, contractor is to expose existing sewer and contact engineer for verification of existing elevation.
  7. The sewer contractor shall adjust manholes to final grades after paving is completed.
  8. Contractor shall maintain traffic in both direction on Tyler Street at all times during construction.
  9. A plug shall be installed and will remain in place where the new sewer connects with the existing sewer until the new sewer is accepted by the city.
  10. The private engineer signing these plans is responsible for assuring the accuracy and acceptability of the work hereon. In the event of discrepancies arising during construction the private engineer signing these plans shall be responsible for determining an acceptable solution and revising the plans for approval by the city.

- CONSTRUCTION NOTES:**
- ① CONSTRUCT MANHOLES PER CITY OF RIVERSIDE STANDARD DRAWING No. 500
  - ② CONSTRUCT CLEANOUT PER CITY OF RIVERSIDE STANDARD DRAWING No. 560
  - ③ CONSTRUCT 4" V.C.P. LATERAL TO 12

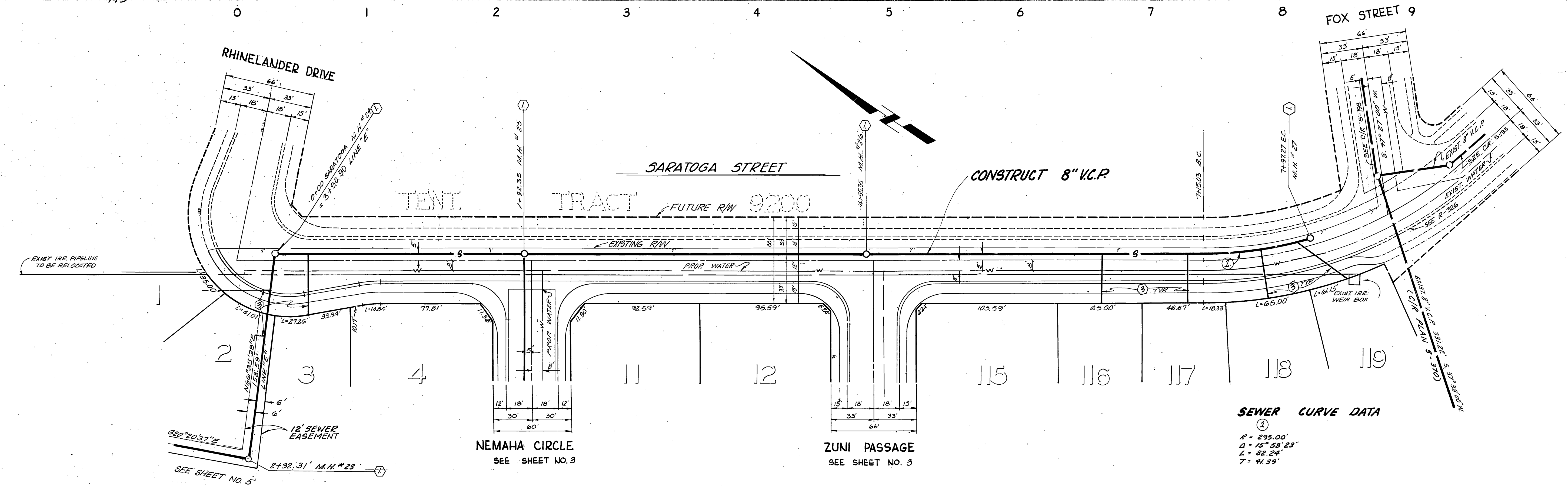
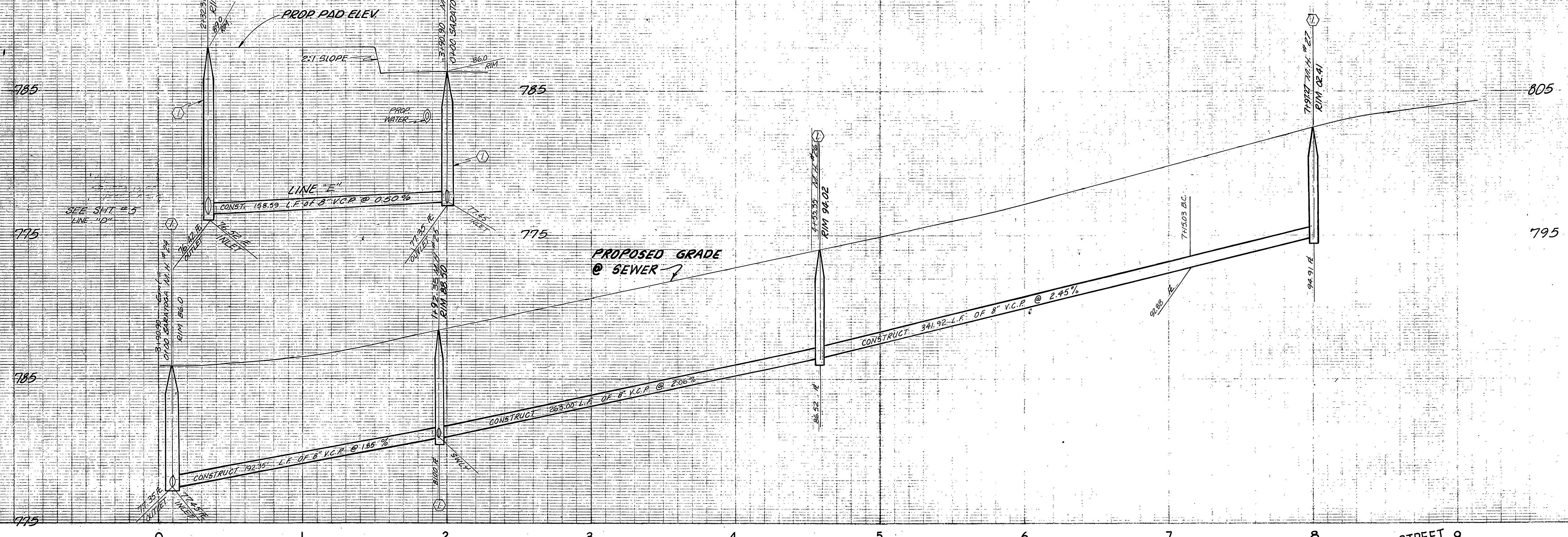


**NOTICE TO CONTRACTOR:**

THE EXISTENCE AND LOCATION OF ANY UNDERGROUND UTILITY PIPES OR STRUCTURES SHOWN ON THESE PLANS ARE OBTAINED BY A SEARCH OF AVAILABLE RECORDS. TO THE BEST OF OUR KNOWLEDGE THERE ARE NO EXISTING UTILITIES EXCEPT AS SHOWN ON THESE PLANS. THE CONTRACTOR IS REQUIRED TO TAKE PRECAUTIONARY MEASURES TO PROTECT THE UTILITY LINES SHOWN AND OTHER LINES NOT OF RECORD OR NOT SHOWN ON THESE PLANS.

**BENCH MARK:** CITY OF RIVERSIDE B.M. E3E,  
PK. NAIL S.E. CURB RETURN  
TYLER & BALMORAL ELEV. 808.504

City of Riverside DOMESTIC SYSTEM Chief Utilities Engineer, Water Date 6-28-78	J. F. DAVIDSON ASSOCIATES CIVIL ENGINEERS - SURVEYORS - PLANNERS RIVERSIDE, CALIFORNIA APPROVED BY <i>John W. County</i> DATE 8/23/77 R.E. No. 17530 W.O. 5699 FOR: PALCSETTER F.B.	CITY OF RIVERSIDE, CALIFORNIA DEPARTMENT OF PUBLIC WORKS APPROVED BY <i>[Signature]</i> DATE 6/23/78 PRINCIPAL ENGINEER TRAFFIC DIVISION CHIEF P. W. ENGR.	SEWER TITLE SHEET TRACT 9297 HORIZ. SCALE: 1" = VERT. SCALE: 1" =	PROJECT NO. 3 - 1176
				SHEET 1 OF 10 FILE NO. 5552



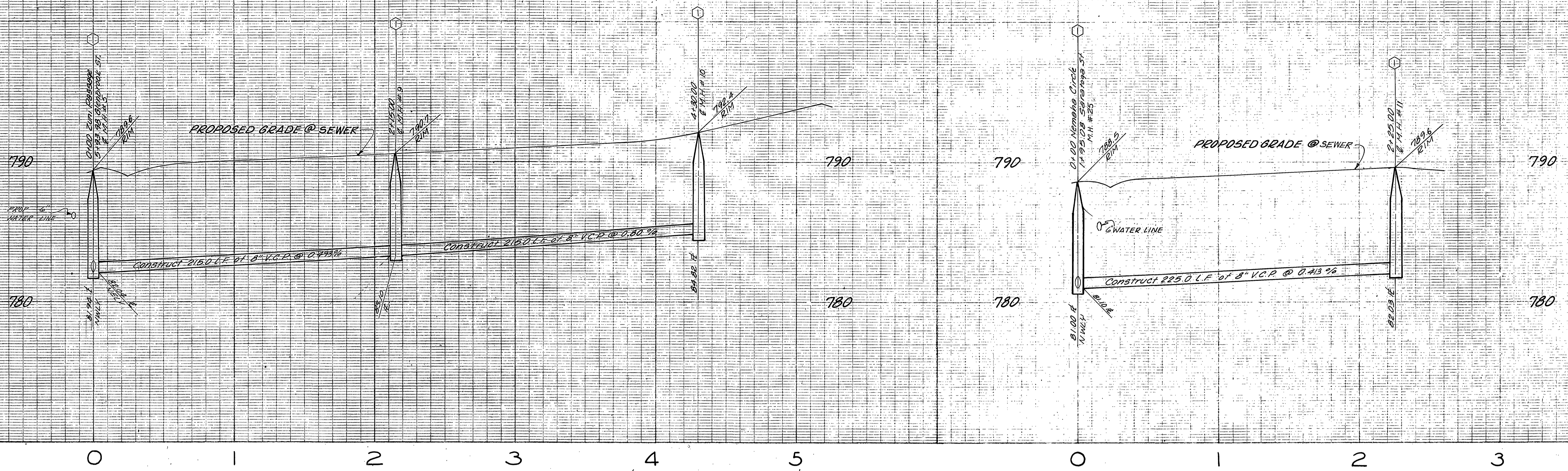
**SEWER CURVE DATA**

②

R = 295.00'  
 Δ = 157° 58' 23"  
 L = 82.24'  
 T = 41.39'

BENCH MARK: CITY OF RIVERSIDE B.M. E3E  
 PK. NAIL SE CURB RETURN  
 TYLER & BALMORAL ELEV 808.504

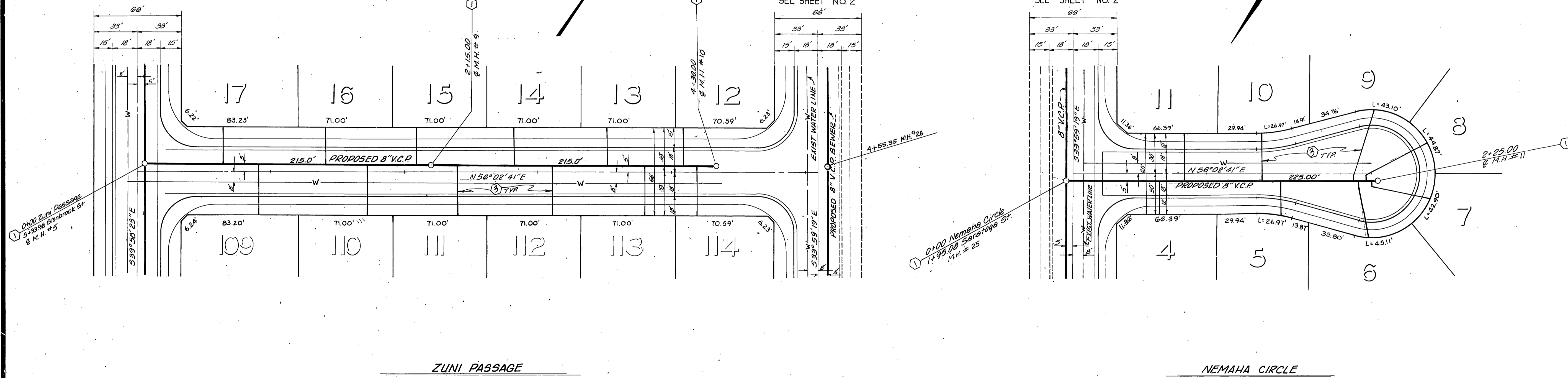
City of Riverside DOMESTIC SYSTEM Wesley Hoffman 10-28-77 Chief Utilities Engineer, Water Dept	<b>J. F. DAVIDSON ASSOCIATES</b> CIVIL ENGINEERS - SURVEYORS - PLANNERS RIVERSIDE, CALIFORNIA APPROVED BY <i>John W. Caty</i> DATE 8/23/78 R.E. No. 17552	CITY OF RIVERSIDE, CALIFORNIA DEPARTMENT OF PUBLIC WORKS		SEWER PLAN & PROFILE	PROJECT NO. <b>S-1176</b>
		APPROVED BY <i>Paul Walker</i> PARK DEPARTMENT TRAFFIC DIVISION CHIEF P.W. ENGR. DATE 6/23/78	TRACT 9297 SARATOGA ST.	SHEET 2 OF 10	FILE NO. 5552
W.O. 5039 FOR: PAGEBETTER F.B.		DESIGNED BY: _____ DRAWN BY: _____ CHECKED BY: _____	HORIZ. SCALE: 1" = 40' VERT. SCALE: 1" = 4'		* AS BUILT 4-15-80 B&P



GLENBROOK STREET  
SEE SHEET NO. 4

SARATOGA STREET  
SEE SHEET NO. 2

SARATOGA STREET  
SEE SHEET NO. 2

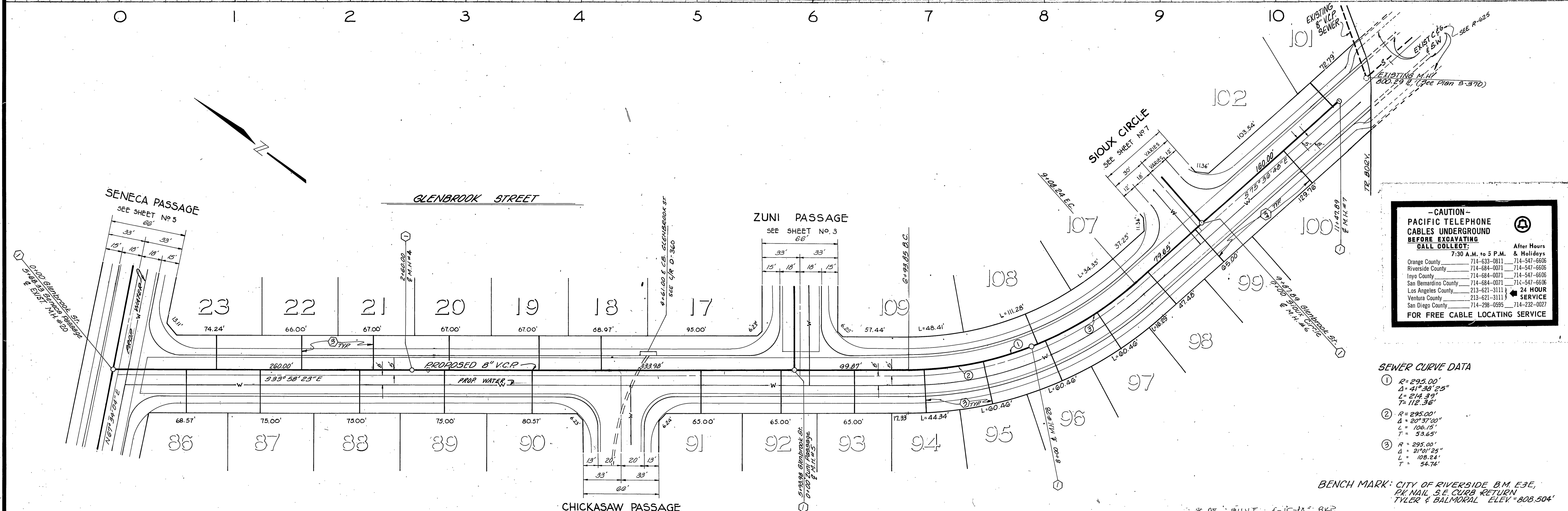
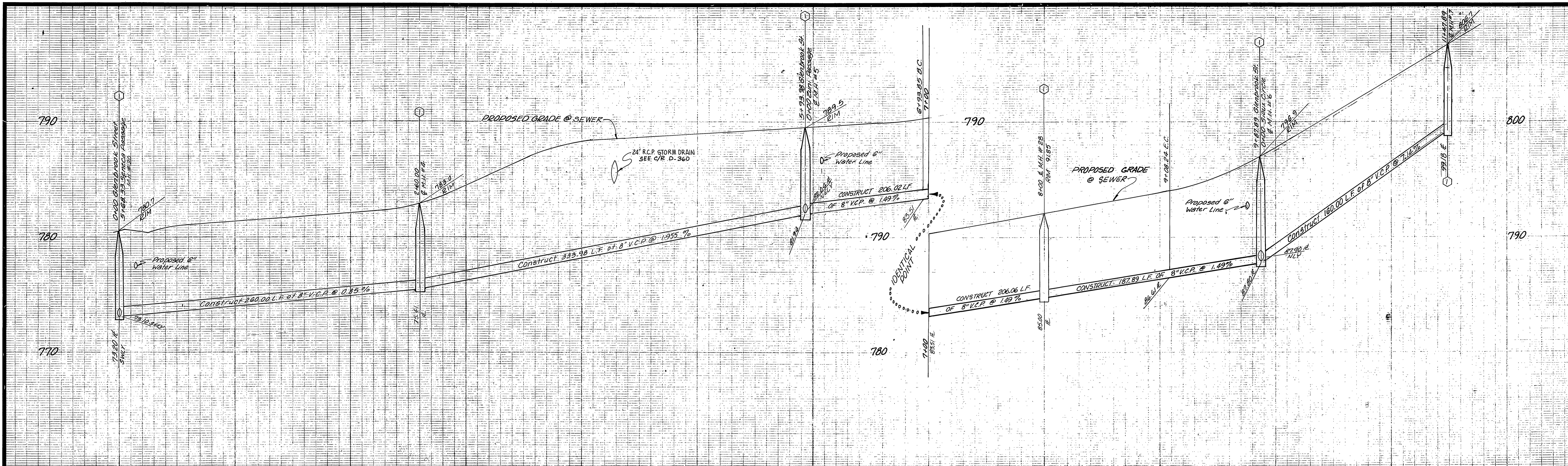


ZUNI PASSAGE

NEMAHA CIRCLE

BENCH MARK: CITY OF RIVERSIDE B.M.E.3E,  
P.K. NAIL S.E. CURB RETURN  
TYLER & BALMORAL ELEV. 808.504

City of Riverside DOMESTIC SYSTEM  <i>Walter Hoff</i> 10-28-77 Chief Utilities Engineer, Water Dept.	<b>J. F. DAVIDSON ASSOCIATES</b> CIVIL ENGINEERS - SURVEYORS - PLANNERS RIVERSIDE, CALIFORNIA APPROVED BY <i>J. W. Canty</i> DATE 8/23/77 R.E. No. 17550	CITY OF RIVERSIDE, CALIFORNIA DEPARTMENT OF PUBLIC WORKS APPROVED BY <i>Robert L. Walker</i> PARK DEPARTMENT TRAFFIC DIVISION CHIEF P. W. ENGR. DATE 6/23/78	* AS BUILT 4-15-80 BLP SEWER PLAN AND PROFILE	PROJECT NO. <b>S - 1176</b>
			TRACT 9297 ZUNI PASSAGE NEMAHA CIRCLE	SHEET <b>3</b> OF <b>10</b> FILE NO. 5552
DESIGNED BY S.R.M. DRAWN BY B.M. CHECKED BY S.R.M.		HORIZ. SCALE: 1" = 40' VERT. SCALE: 1" = 4'		



**- CAUTION -**  
**PACIFIC TELEPHONE**  
**CABLES UNDERGROUND**  
**BEFORE EXCAVATING**  
**CALL COLLECT:**

After Hours	7:30 A.M. to 5 P.M. & Holidays
Orange County	714-633-0811 714-547-6606
Riverside County	714-684-0071 714-547-6606
Inyo County	714-684-0071 714-547-6606
San Bernardino County	714-684-0071 714-547-6606
Los Angeles County	213-621-3111
Ventura County	213-621-3111
San Diego County	714-298-0595 714-232-0027

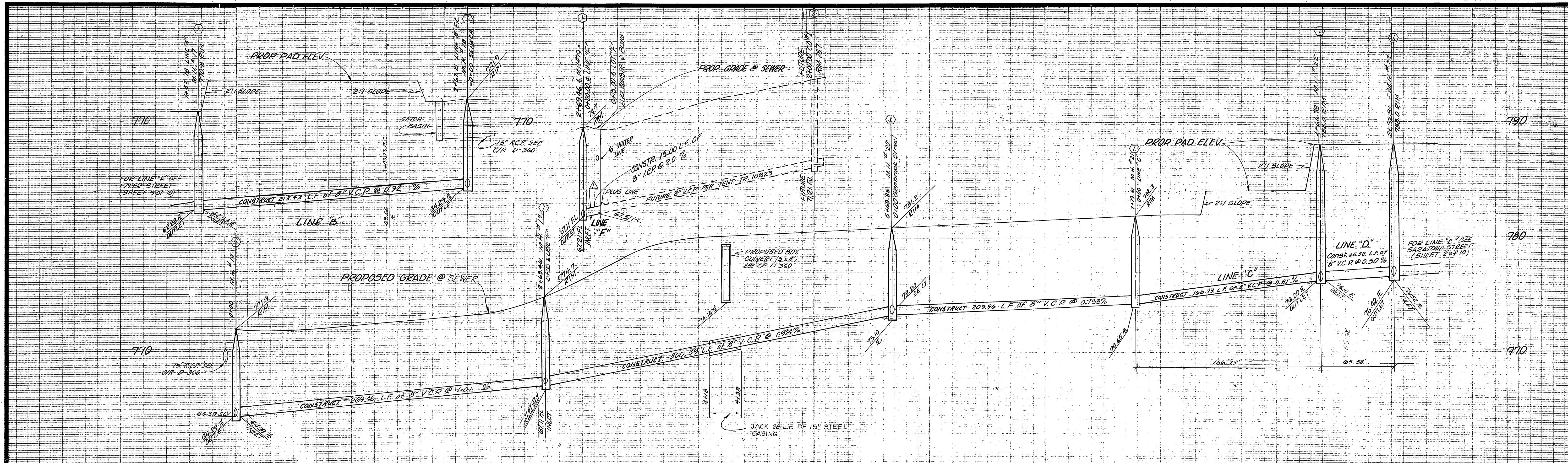
**FOR FREE CABLE LOCATING SERVICE**

**SEWER CURVE DATA**

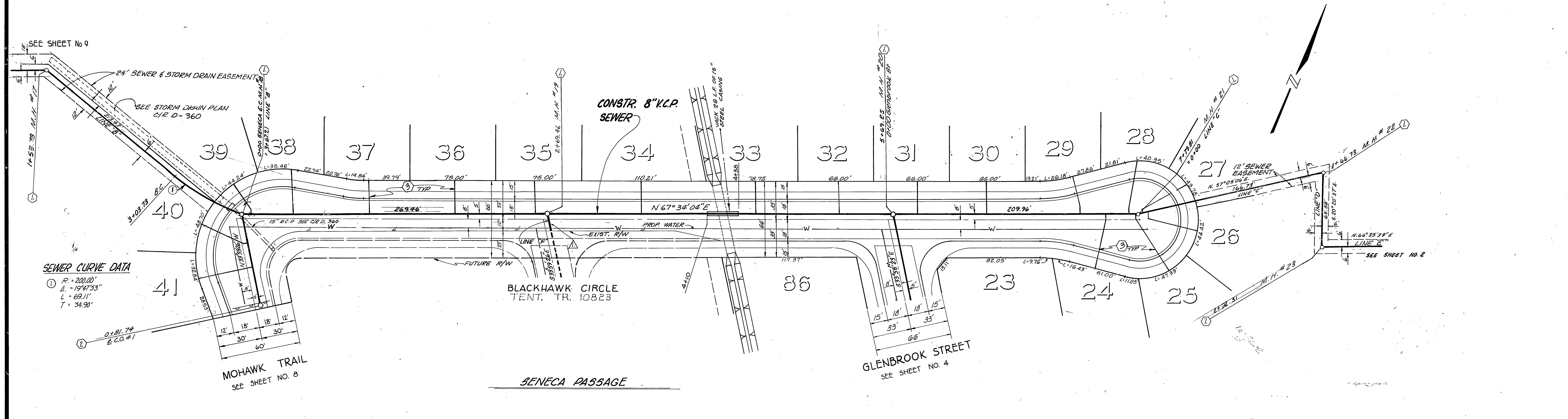
- R = 295.00'  
 Δ = 41°38'23"  
 L = 214.39'  
 T = 112.36'
- R = 295.00'  
 Δ = 20°37'00"  
 L = 106.15'  
 T = 53.65'
- R = 295.00'  
 Δ = 21°01'25"  
 L = 108.24'  
 T = 54.74'

BENCH MARK: CITY OF RIVERSIDE B.M. E3E,  
 1/4" NAIL, S.E. CORNER RETURN  
 TYLER & BALMORAL ELEV. = 808.504'

City of Riverside DOMESTIC SYSTEM Wally Joffe 10-28-77 Chief Utilities Engineer, Water Date	<b>J. F. DAVIDSON ASSOCIATES</b> CIVIL ENGINEERS - SURVEYORS - PLANNERS RIVERSIDE, CALIFORNIA APPROVED BY: <i>[Signature]</i> DATE: 8/23/77 R.E. No. 17550	CITY OF RIVERSIDE, CALIFORNIA DEPARTMENT OF PUBLIC WORKS APPROVED BY: <i>[Signature]</i> DATE: 6/23/78 PRINCIPAL ENGINEER PARK DEPARTMENT TRAFFIC DIVISION CHIEF P. W. ENGR.	SEWER PLAN AND PROFILE <b>TRACT 9297</b> GLENBROOK STREET	PROJECT NO. <b>S - 1176</b> SHEET <b>4</b> OF <b>10</b> FILE NO. <b>5552</b>
			W.O. 56 03 FOR: PAGESETTER F.B.	DESIGNED BY: S.R.H. DRAWN BY: B.M. CHECKED BY: S.R.H.



0 1 2 3 4 5 6 7 8

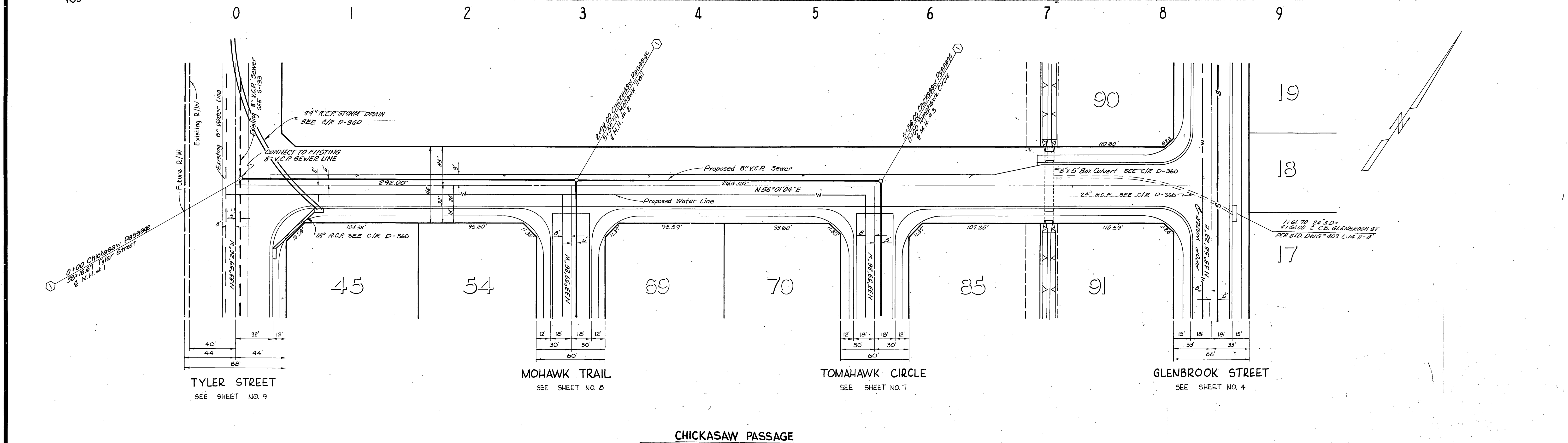
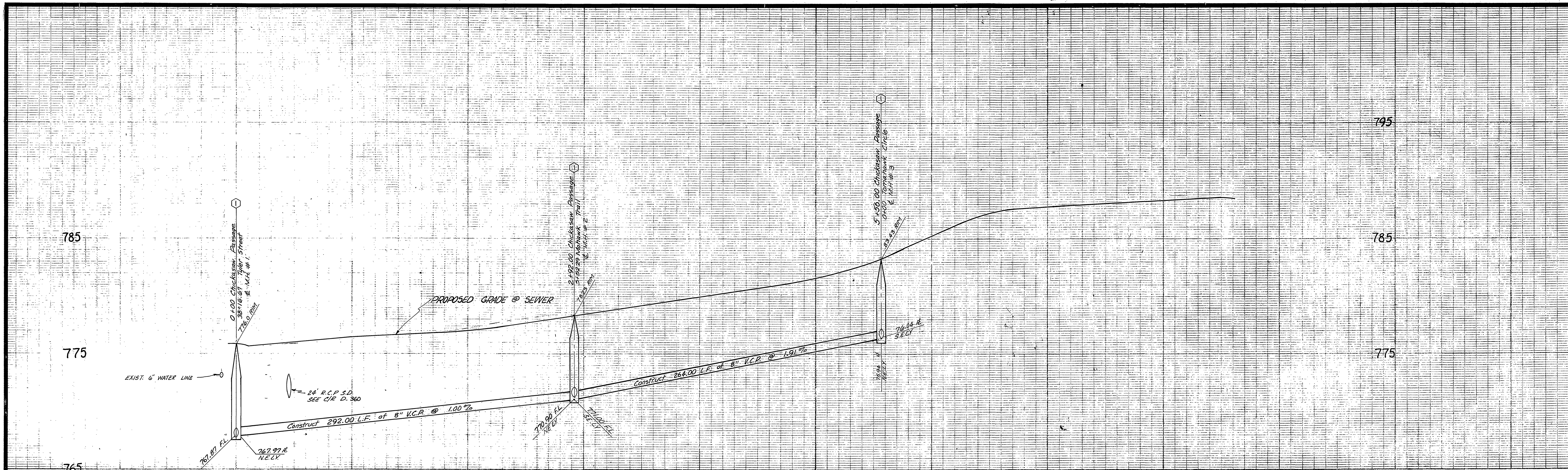


**SEWER CURVE DATA**  
 ① R = 200.00'  
 Δ = 194°33'  
 L = 69.11'  
 T = 34.90'

**MOHAWK TRAIL**  
 SEE SHEET NO. 8

BENCH MARK: CITY OF RIVERSIDE B.M.E.3E,  
 PK.NAIL 5E CURB RETURN  
 TYLER & BALMORAL ELEV. 808.504

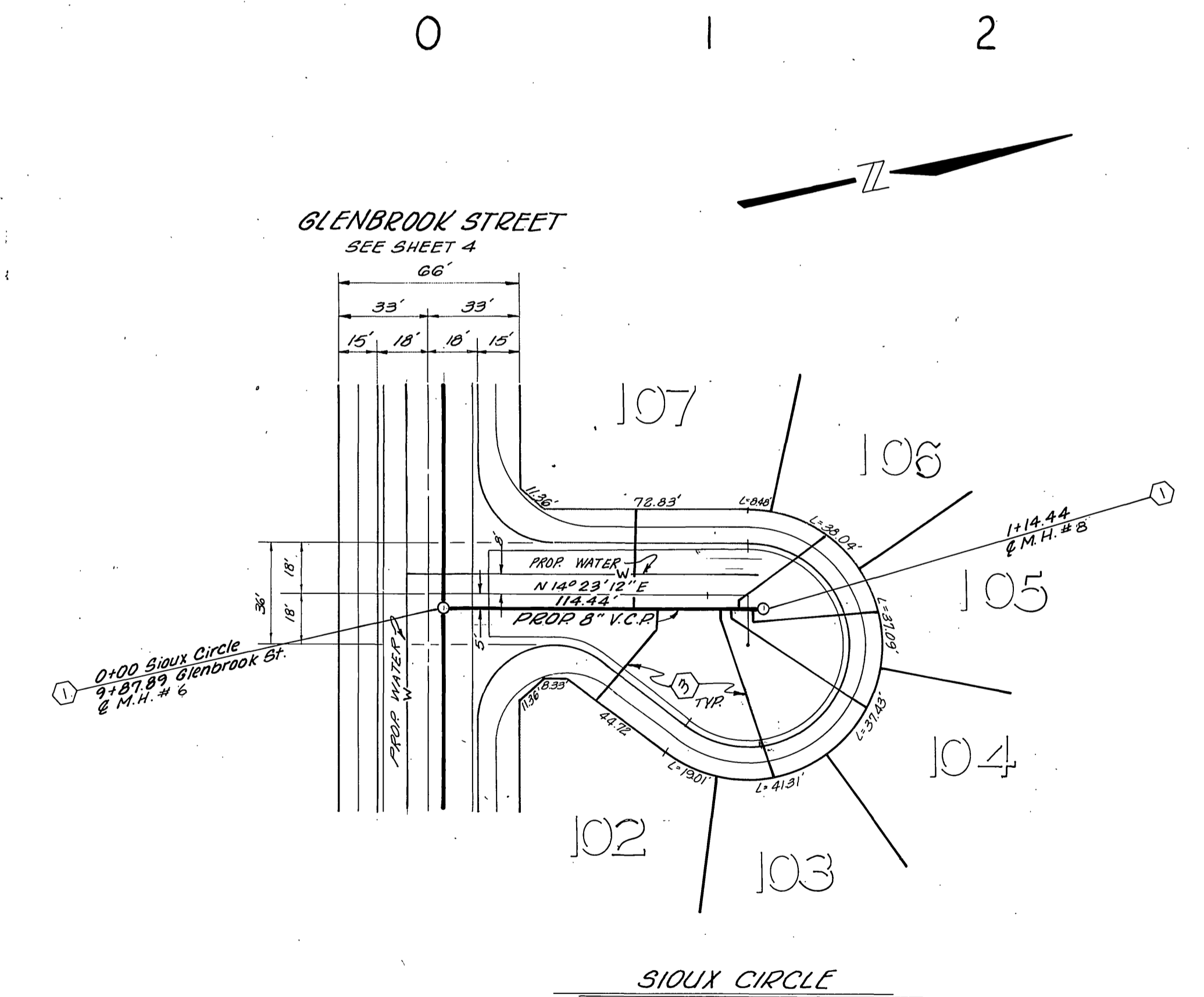
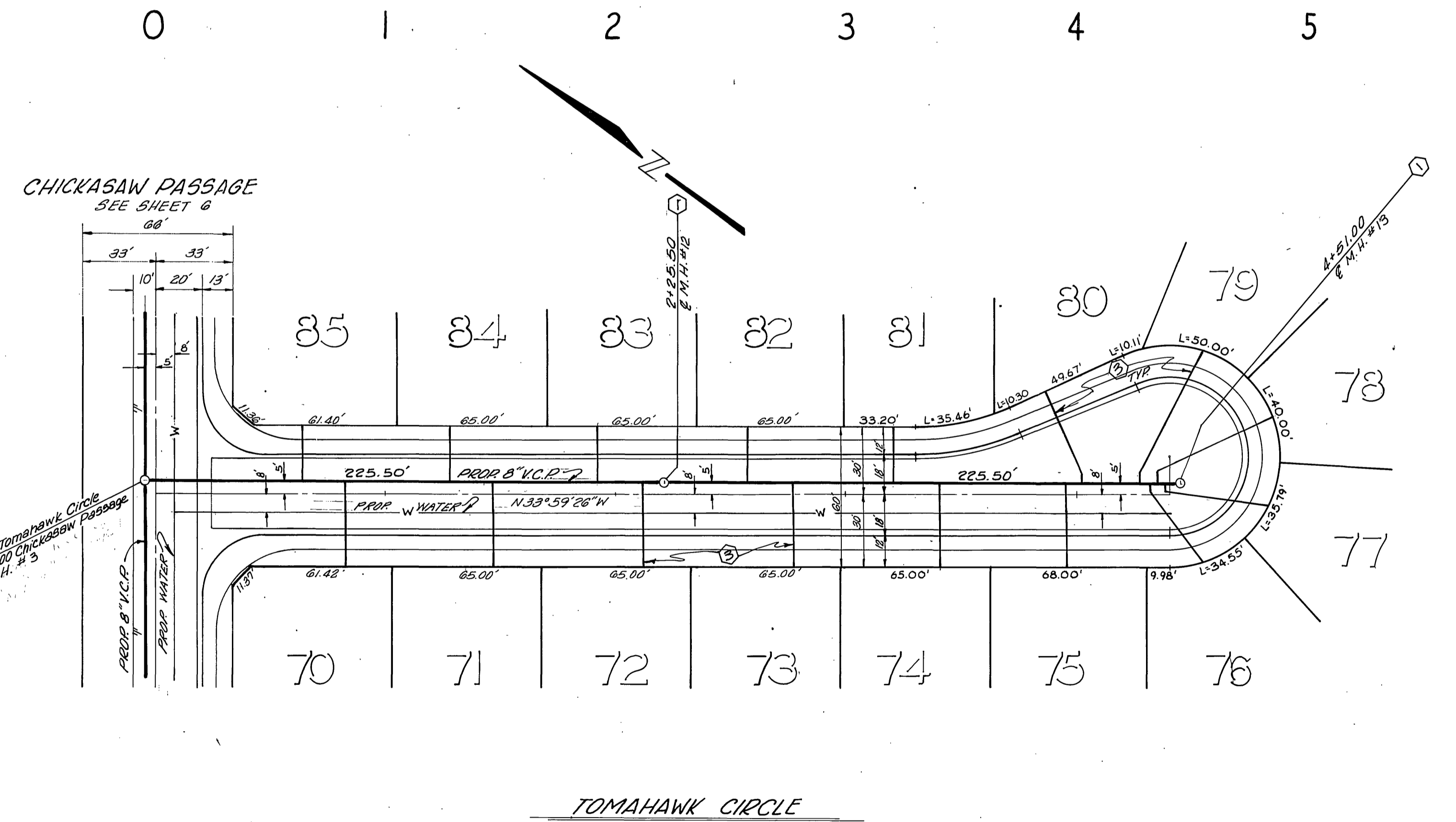
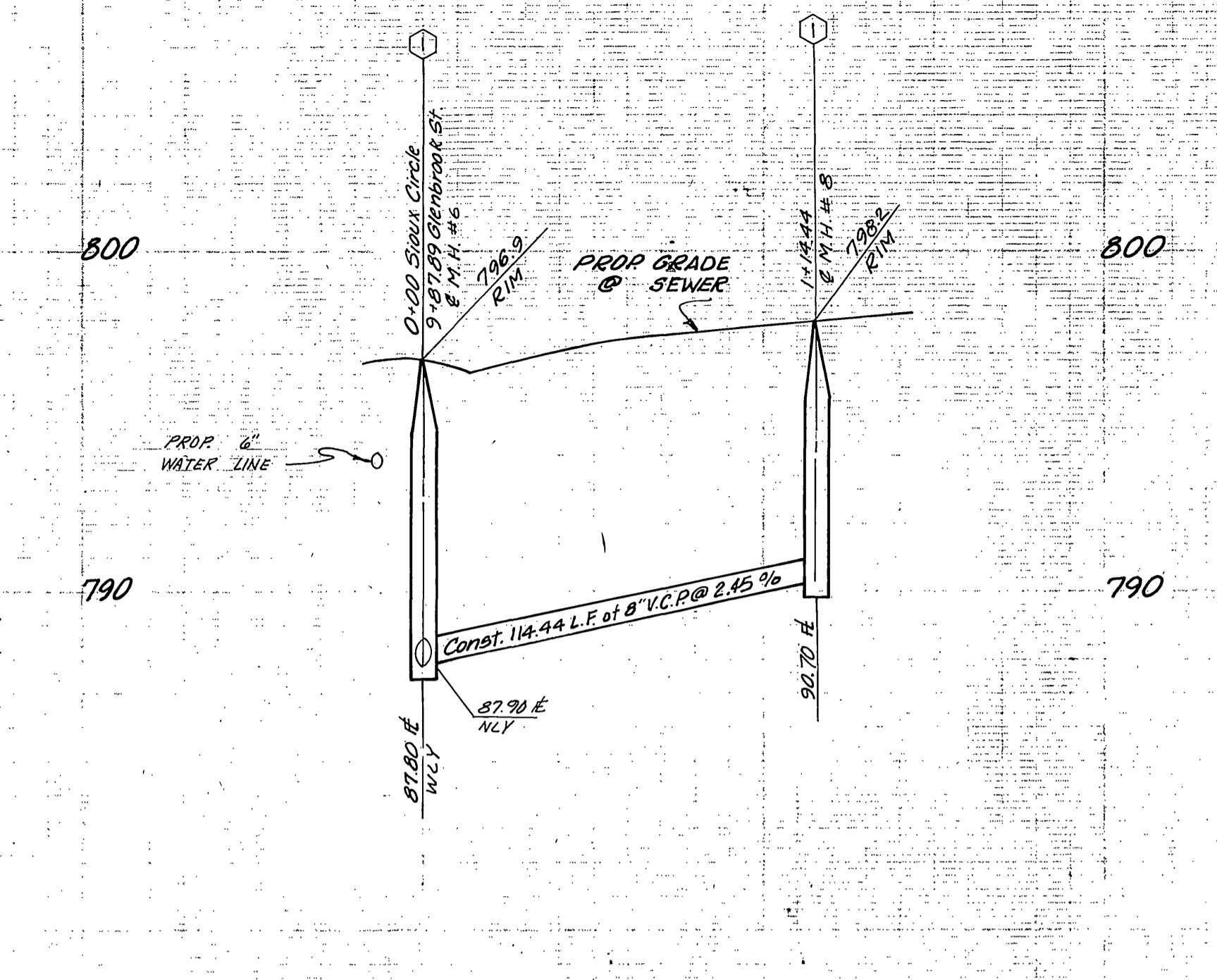
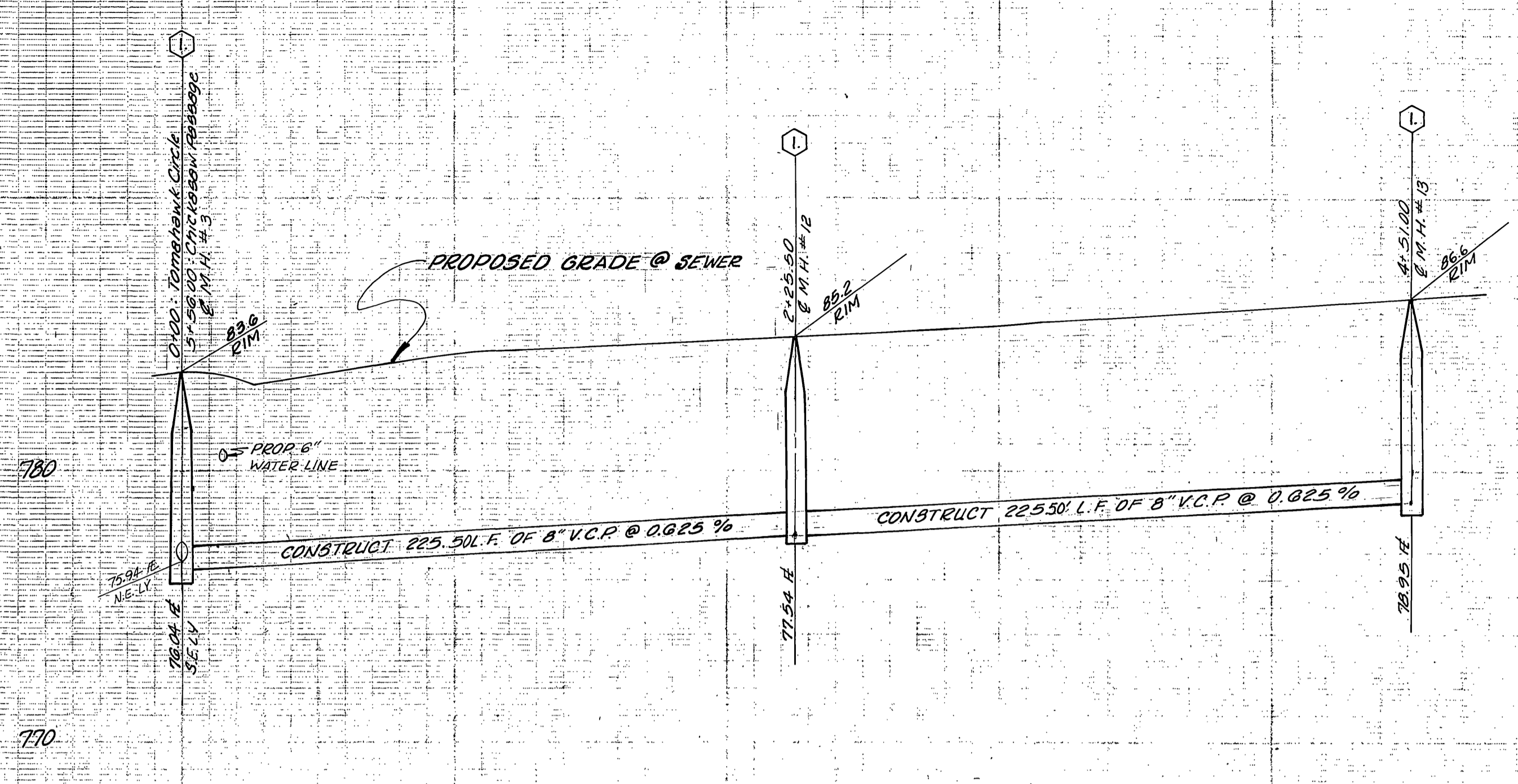
City of Riverside DOMESTIC SYSTEM  <i>Wally J. Hahn</i> 10-23-77 Chief Utilities Engineer, Water Date	<b>J. F. DAVIDSON ASSOCIATES</b> CIVIL ENGINEERS - SURVEYORS - PLANNERS RIVERSIDE, CALIFORNIA APPROVED BY <i>J. F. Davidson</i> DATE 8/23/77 R.E. No. 17530	CITY OF RIVERSIDE, CALIFORNIA DEPARTMENT OF PUBLIC WORKS APPROVED BY <i>[Signature]</i> DATE 4/23/78 DIRECTOR OF PUBLIC WORKS	<b>SEWER PLAN AND PROFILE</b>  <b>TRACT 9297</b> <b>SENECA PASSAGE</b>	PROJECT NO.
				S - 1176 SHEET 5 OF 10 FILE NO. 5552
W.O. 5699 FOR: PACESETTER F.B.		DESIGNED BY S.R.H. DRAWN BY B.M. CHECKED BY S.E.H.		*AS BUILT 4-15-80 B.C.P.* HORIZ. SCALE: 1" = 40' VERT. SCALE: 1" = 4'



BENCH MARK: CITY OF RIVERSIDE B.M. F.3E,  
 P.V. NAIL S.E. CURB RETURN  
 TYLER & BALMORAL ELEV. = 808.504'

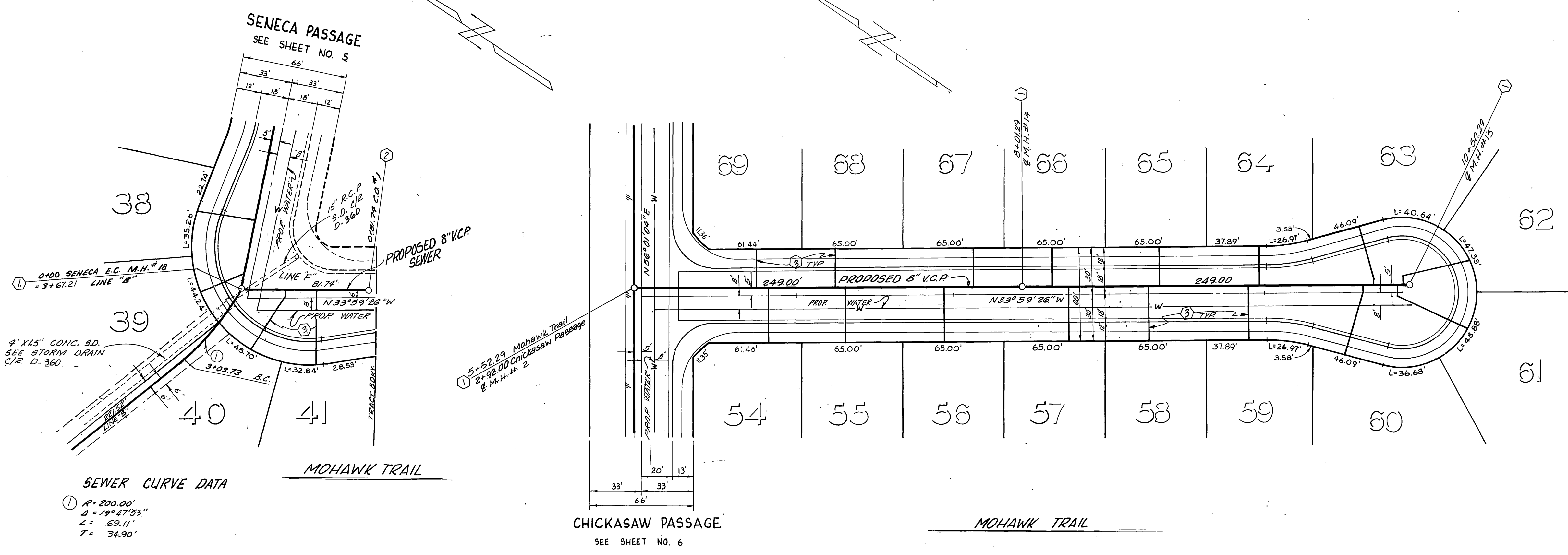
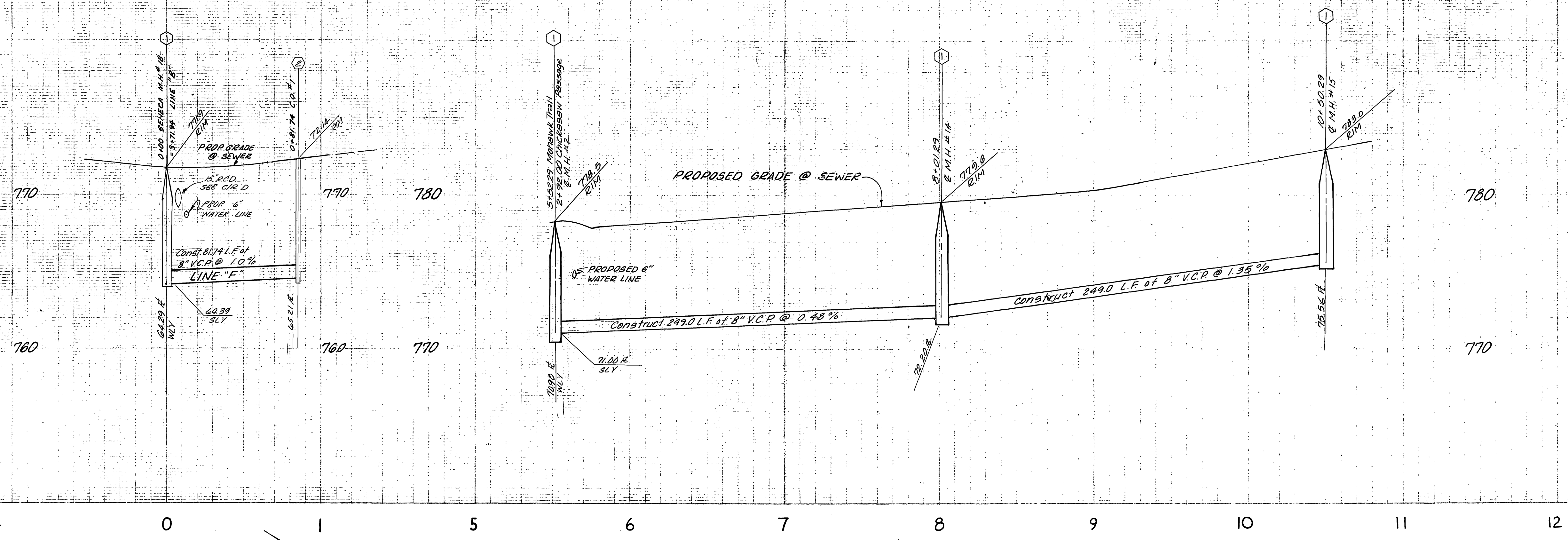
City of Riverside DOMESTIC SYSTEM Approved by: <i>Wally Hylton</i> 10.28.77 Chief Utilities Engineer, Water Dept.	J. F. DAVIDSON ASSOCIATES CIVIL ENGINEERS - SURVEYORS - PLANNERS RIVERSIDE, CALIFORNIA APPROVED BY: <i>J. W. Carty</i> DATE 8/23/77 R.E. No. 115330	CITY OF RIVERSIDE, CALIFORNIA DEPARTMENT OF PUBLIC WORKS APPROVED BY: <i>Paul C. Walker</i> DIRECTOR OF PUBLIC WORKS DATE 6/23/78	PROJECT NO. <b>S-1176</b>
	W.O. 5699 FOR: PACESETTER F.D.	DESIGNED BY: _____ DRAWN BY: _____ CHECKED BY: _____	CHIEF P. W. ENGR. <i>W. G. 6/23</i>

HORIZ. SCALE: 1" = 40' VERT. SCALE: 1" = 4'



BENCH MARK: CITY OF RIVERSIDE B.M. E3E,  
 PK. NAIL S.E. CURB RETURN  
 TYLER & BALMORAL ELEV= 808.504'

City of Riverside DOMESTIC SYSTEM Chief Utilities Engineer, Water Date 10-28-77	J. F. DAVIDSON ASSOCIATES CIVIL ENGINEERS - SURVEYORS - PLANNERS RIVERSIDE, CALIFORNIA APPROVED BY <i>J. W. C. Jr.</i> DATE 8/23/77 R.E. No. 17550	CITY OF RIVERSIDE, CALIFORNIA DEPARTMENT OF PUBLIC WORKS APPROVED BY <i>[Signature]</i> DATE 6/23/78 PRINCIPAL ENGINEER PARK DEPARTMENT TRAFFIC DIVISION CHIEF P. W. ENGR. <i>[Signature]</i> DATE 6/23/78	SEWER PLAN AND PROFILE TRACT 9297 SIOUX CIRCLE TOMAHAWK CIRCLE SHEET 7 OF 10	PROJECT NO. <b>S - 1176</b> FILE NO. 5552
	W.G. 5499 FOR FACEBETTER F.B.	MARK REVISIONS APPR. DATE DESIGNED BY S.E.H. DRAWN BY B.M. CHECKED BY S.E.H.	* AS BUILT 4-15-80 B.K.P. HORIZ. SCALE: 1" = 40' VERT. SCALE: 1" = 4'	

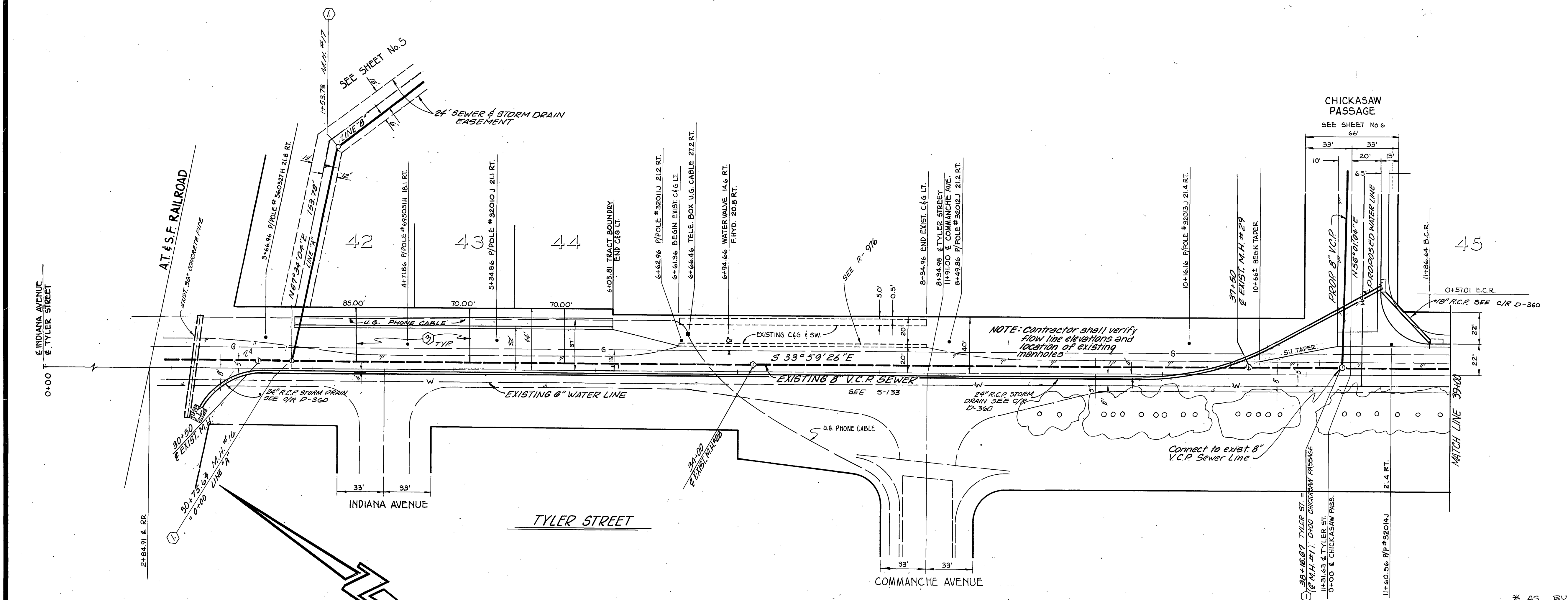
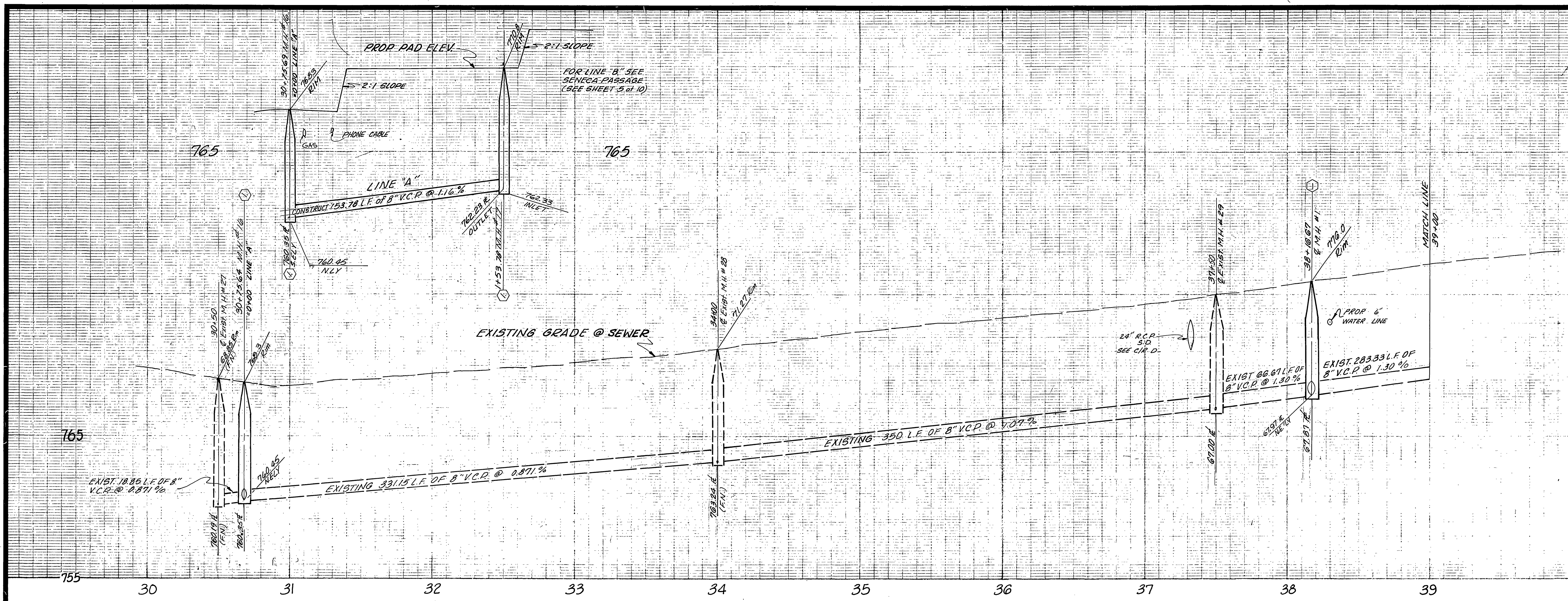


**SEWER CURVE DATA**  
 ①  $R = 200.00'$   
 $\Delta = 19^\circ 47' 53''$   
 $L = 69.11'$   
 $T = 34.90'$

BENCH MARK: CITY OF RIVERSIDE B.M. E3E,  
 P.K. NAIL S.E. CURB RETURN  
 TYLER & BALMORAL ELEV. 808.504'

City of Riverside DOMESTIC SYSTEM  <i>Walter Hill</i> 10-28-77 Chief Utilities Engineer, Water Dept	<b>J. F. DAVIDSON ASSOCIATES</b> CIVIL ENGINEERS - SURVEYORS - PLANNERS RIVERSIDE - CALIFORNIA APPROVED BY: <i>J. W. City</i> DATE: 8/23/77 R.E. No. 17550	CITY OF RIVERSIDE, CALIFORNIA DEPARTMENT OF PUBLIC WORKS APPROVED BY: <i>[Signature]</i> DATE: 6/23/78 PRINCIPAL ENGINEER PARK DEPARTMENT TRAFFIC DIVISION CHIEF P. W. ENGR.	SEWER PLAN & PROFILE  <b>TRACT 9297          MOHAWK TRAIL</b>		PROJECT NO. <b>S-1176</b>
			HORIZ. SCALE: 1" = 40'    VERT. SCALE: 1" = 4'		SHEET <b>8</b> OF <b>10</b> FILE NO. 5552





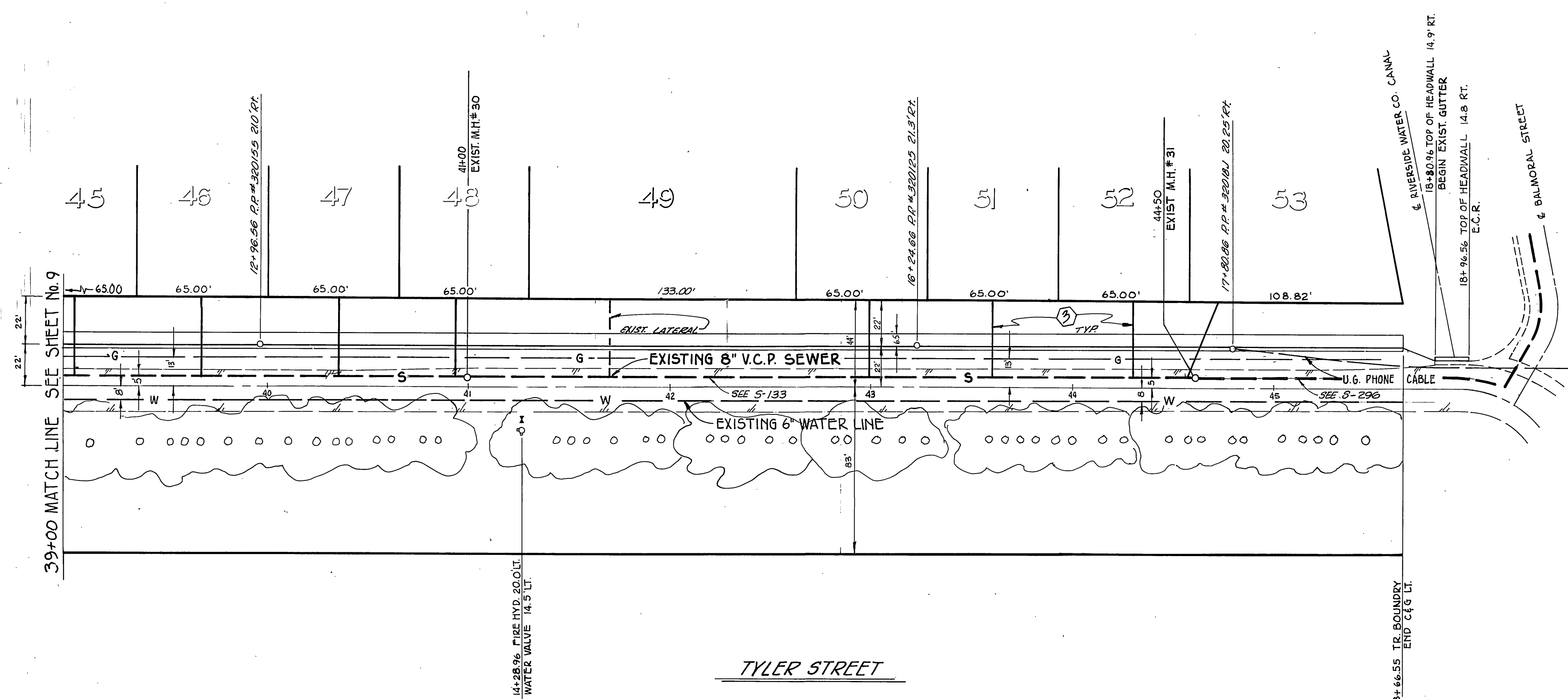
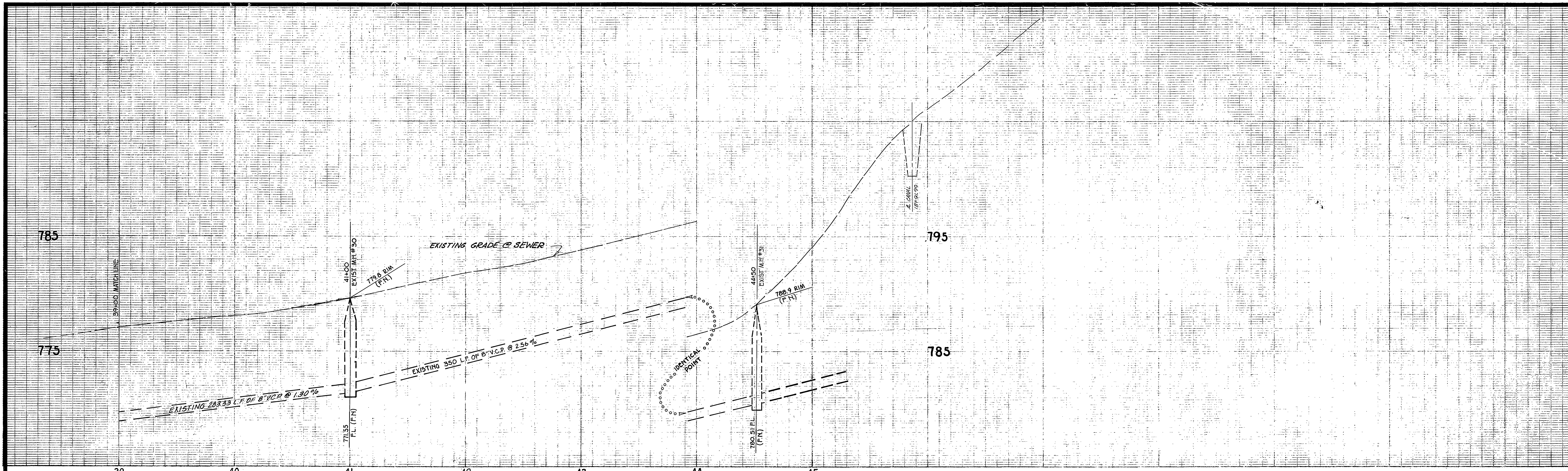
**-CAUTION-**  
**PACIFIC TELEPHONE**  
**CABLES UNDERGROUND**  
**BEFORE EXCAVATING**  
**CALL COLLECT:**

Orange County	714-633-8811	714-547-6606
Riverside County	714-684-0071	714-547-6606
Inyo County	714-684-0071	714-547-6606
San Bernardino County	714-684-0071	714-547-6606
Los Angeles County	213-621-3111	24 HOUR SERVICE
Ventura County	213-621-3111	24 HOUR SERVICE
San Diego County	714-298-0595	714-232-0027

**FOR FREE CABLE LOCATING SERVICE**

BENCH MARK: CITY OF RIVERSIDE B.M. E3E, PK. NAIL S.E. CURB RETURN TREE & BALMORAL ELEVATION 808.50'

City of Riverside DOMESTIC SYSTEM Chief Utilities Engineer, Water Date	J. F. DAVIDSON ASSOCIATES CIVIL ENGINEERS - SURVEYORS - PLANNERS RIVERSIDE, CALIFORNIA APPROVED BY: <i>John W. City</i> DATE 8/23/77 R.E. No. 17,550	CITY OF RIVERSIDE, CALIFORNIA DEPARTMENT OF PUBLIC WORKS APPROVED BY: <i>John W. City</i> DIRECTOR OF PUBLIC WORKS DATE 8/23/77	SEWER PLAN & PROFILE <b>TRACT 9297</b> & LINE "A" EASEMENT <b>TYLER STREET</b>	PROJECT NO. <b>S - 1176</b> SHEET 9 OF 10 FILE NO. 5552
	W.G. 9689 FOR PALETTES F.B.	DESIGNED BY S.R.H. DRAWN BY B.M. CHECKED BY S.R.H.	* AS BUILT 4-15-80 R.P.	HORIZ. SCALE: 1" = 40' VERT. SCALE: 1" = 4'



**- CAUTION -**  
**PACIFIC TELEPHONE**  
**CABLES UNDERGROUND**  
**BEFORE EXCAVATING**

**CALL COLLECT:**

Orange County	714-633-8811	714-547-6606
Riverside County	714-684-0071	714-547-6606
Inyo County	714-684-0071	714-547-6606
San Bernardino County	714-684-0071	714-547-6606
Los Angeles County	213-621-3111	24 HOUR SERVICE
Ventura County	213-621-3111	24 HOUR SERVICE
San Diego County	714-298-9595	714-232-0027

**FOR FREE CABLE LOCATING SERVICE**

BENCH MARK: CITY OF RIVERSIDE B.M.#3E,  
 P.K. NAIL S.E. CURB RETURN  
 TYLER AND BALMORAL ELEV. 808.504'

City of Riverside  
 DOMESTIC SYSTEM

*Walter J. Hahn* 10-28-77  
 Chief Utilities Engineer, Water Date

**J. F. DAVIDSON ASSOCIATES**  
 CIVIL ENGINEERS - SURVEYORS - PLANNERS  
 RIVERSIDE, CALIFORNIA

APPROVED BY *John W. Coffey* DATE 8/23/77  
 R.E. No. 17550

W.O. 5409 FOR PALMBETTER F.B.

CITY OF RIVERSIDE, CALIFORNIA  
 DEPARTMENT OF PUBLIC WORKS

APPROVED BY	BY	DATE
PRINCIPAL ENGINEER	<i>John W. Coffey</i>	8/23/77
PARK DEPARTMENT		
TRAFFIC DIVISION		
CHIEF P. W. ENGR.		

DESIGNED BY *S.E.H.* DRAWN BY *B.M.* CHECKED BY *S.E.H.*

SEWER PLAN AND PROFILE

**TYLER STREET**  
**TRACT 9297**

PROJECT NO. **S-1176**

SHEET **10** OF **10**

HORIZ. SCALE: 1" = 40'    VERT. SCALE: 1" = 4'    FILE NO. 5552

\* AS BUILT 4-15-80 B&P