

- NOTES:**
- All construction shall be in accordance with the Standard Specifications for Public Works Construction, 1976 edition, and Standard Drawings of the city of Riverside, Department of Public Works.
  - Locations of laterals to be located in field at the direction of the developer. Avoid conflict with proposed and/or existing facilities.
  - All laterals to be 4" dia. V.C.P. constructed to the property line.
  - The contractor shall expose the existing sewer stub and verify the elevation of same prior to beginning construction of sewer improvements, all sewer construction shall begin downstream and continue upstream.
  - The sewer contractor shall adjust manholes and clean-out to final grade after paving is completed.
  - A plug shall be installed and will remain in place where the new sewer connects with the existing sewer until the new sewer is accepted by City.
  - It shall be the responsibility of the contractor to clear the right of way in accordance with the provisions of the law as it affects each utility including irrigation lines and appurtenances and at no cost to the City.
  - The contractor is required to take due precautionary measures to protect the utility lines shown and all other lines not of record and/or not shown on these plans and shall be responsible for any damage thereto.
  - Encase sewer with concrete 4.5" min. each side of water line per C.W.D.-023 Type "C" encasement.

① Construct manhole per Riverside City Std. 500

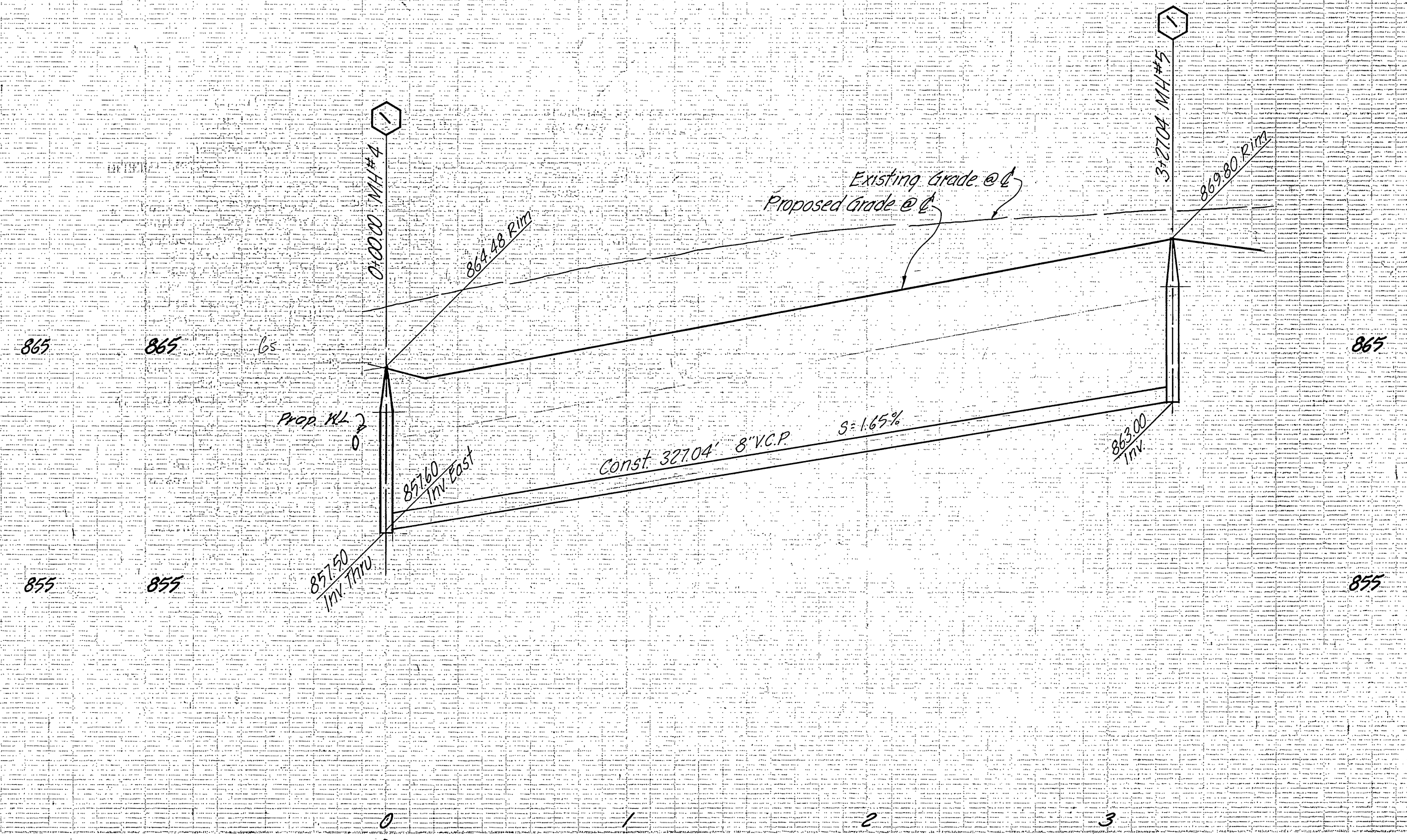
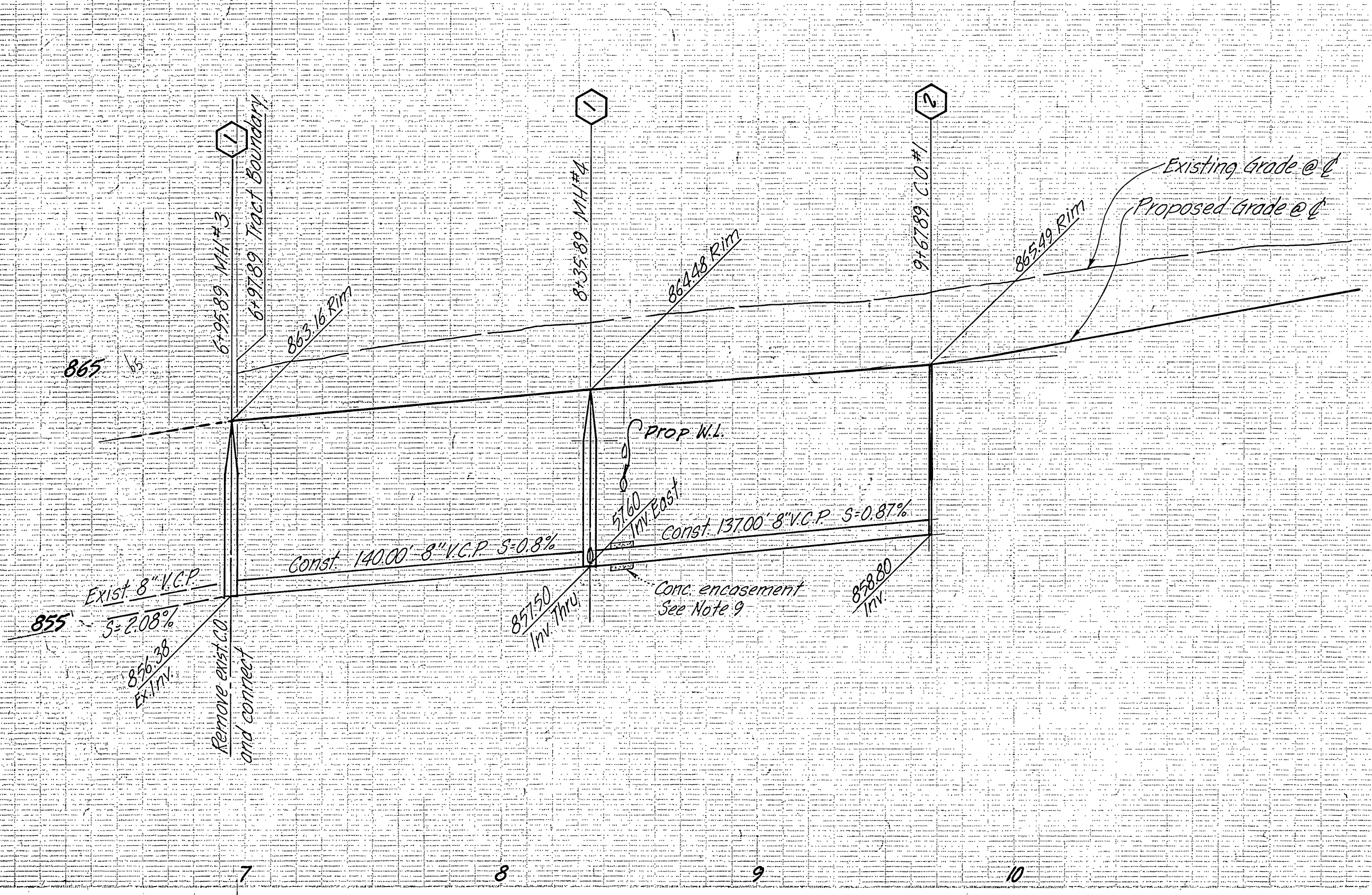
**BENCH MARK**  
 E4-B : Brass disc stamped E4-B in capped well at intersection of Van Buren Blvd and Victoria Ave. Elev. 881.950

**CALLE LA CUESTA**

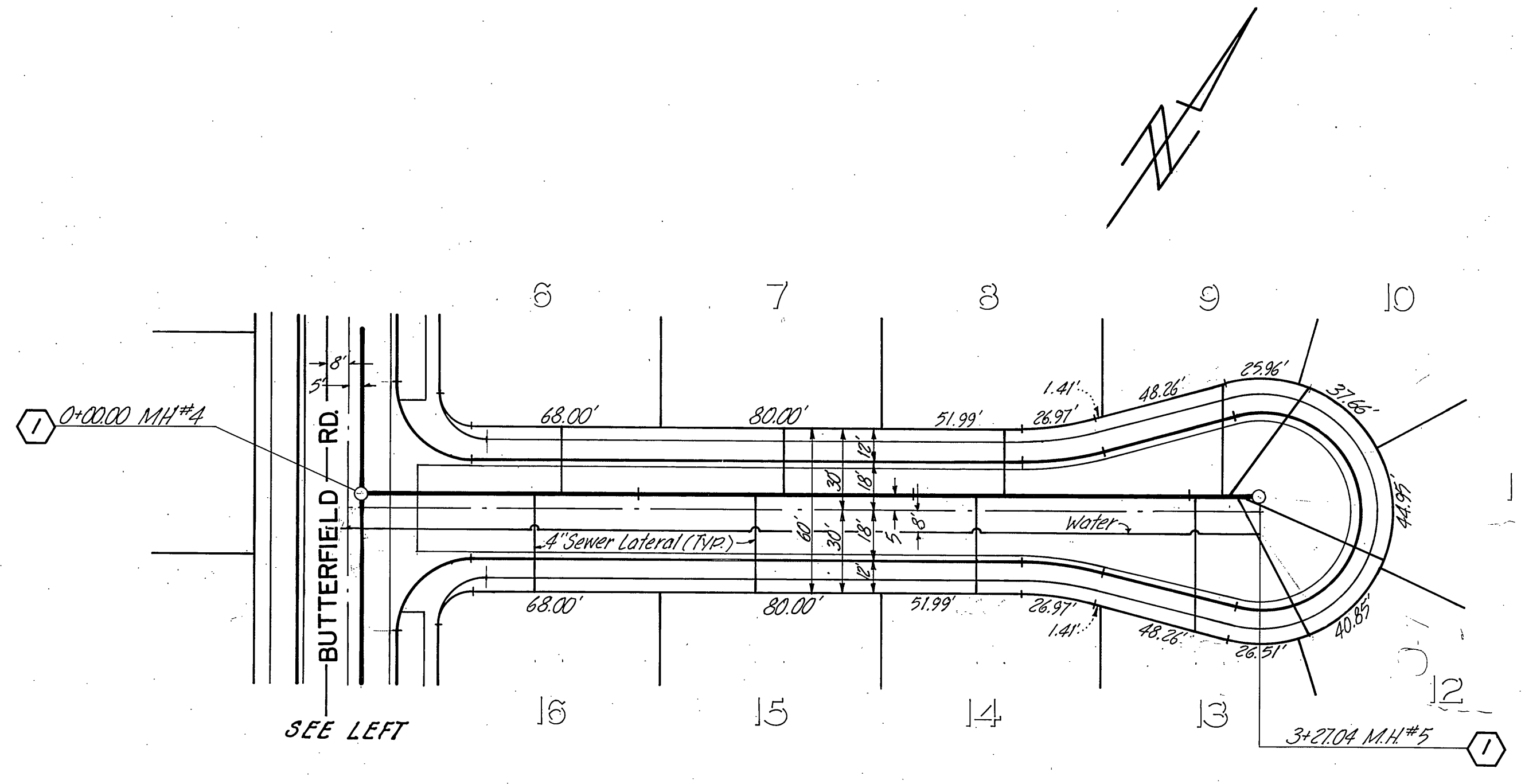
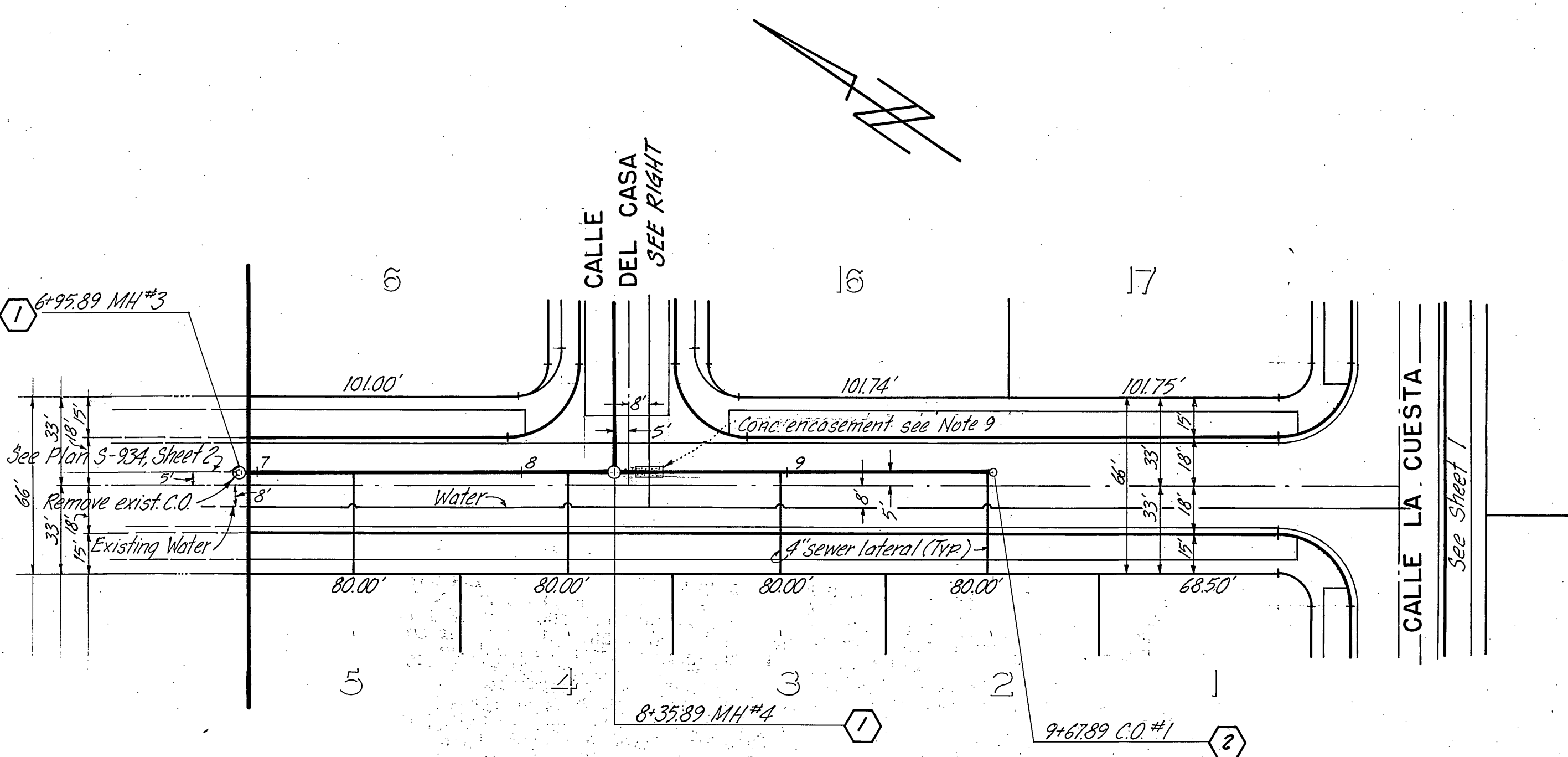
**ENGINEER** WILLIAM J. BLACK & ASSOCIATES  
 6333 SIERRA COURT  
 DUBLIN, CALIFORNIA 94566  
 (415) 828-6755

**DEVELOPER** VOLK DEVELOPMENTS INC.  
 94 SOUTH LOS ROBLES AVENUE  
 PASADENA, CALIFORNIA 9101  
 (213) 795-3324 681-6731

City of Riverside Domestic System Chief Utilities Engineer, Water Date: 11-1-77	The private engineer signing these plans is responsible for assuring the accuracy and acceptability of the work hereon. In the event of discrepancies arising during construction as a result of errors or omissions, the private engineer shall be responsible for determining an acceptable solution and revising the plans for approval by the City.	WILLIAM J. BLACK & ASSOCIATES CONSULTING ENGINEERS APPROVED BY: [Signature] REGISTERED CIVIL ENGINEER NO. 69339 DATE 11-1-77	DESIGNED BY: D.S. DRAWN BY: P.E.D. CHECKED BY: K.C.	CITY OF RIVERSIDE, CALIFORNIA DEPARTMENT OF PUBLIC WORKS		SEWER PLAN AND PROFILE <b>TRACT 8684</b> CALLE LA CUESTA R-82-767		INDEXED R.R. PROJECT NO. S-1177
				APPROVED BY: [Signature] PRINCIPAL ENGINEER PARK DEPARTMENT TRAFFIC DIVISION CHIEF P. W. ENGR.		APPROVED BY: [Signature] DIRECTOR OF PUBLIC WORKS DATE 6/29/78		SHEET 1 OF 2 FILE NO.



See sheet 1 for notes



BUTTERFIELD ROAD

CALLE DEL CASA

- ① Construct manhole per Riverside City Std. 500
- ② Construct clean-out per Riverside City Std. 560

**BENCH MARK**  
 E4-B Brass disc stamped E4-B in capped well  
 at intersection of Van Buren Blvd. and Victoria Ave.  
 Elev. 881.950

City of Riverside Domestic Systems  By: <i>[Signature]</i> 11-1-77 Chief Utilities Engineer, Water Date:	WILLIAM J. BLACK & ASSOCIATES CONSULTING ENGINEERS APPROVED BY: <i>[Signature]</i> REGISTERED CIVIL ENGINEER NO. 6939 DATE 11-1-77	CITY OF RIVERSIDE, CALIFORNIA DEPARTMENT OF PUBLIC WORKS APPROVED BY: <i>[Signature]</i> PRINCIPAL ENGINEER PARK DEPARTMENT TRAFFIC DIVISION CHIEF P. W. ENGR. DATE 6/29/78	SEWER PLAN AND PROFILE PROJECT NO. 5-1177	
			TRACT 8684 BUTTERFIELD RD. CALLE DEL CASA R-82-767 SHEET 2 OF 2	
DESIGNED BY: DS DRAWN BY: PED CHECKED BY: K.E.			HORIZ. SCALE: 1" = 40' VERT. SCALE: 1" = 4' FILE NO.	