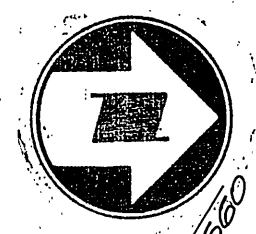
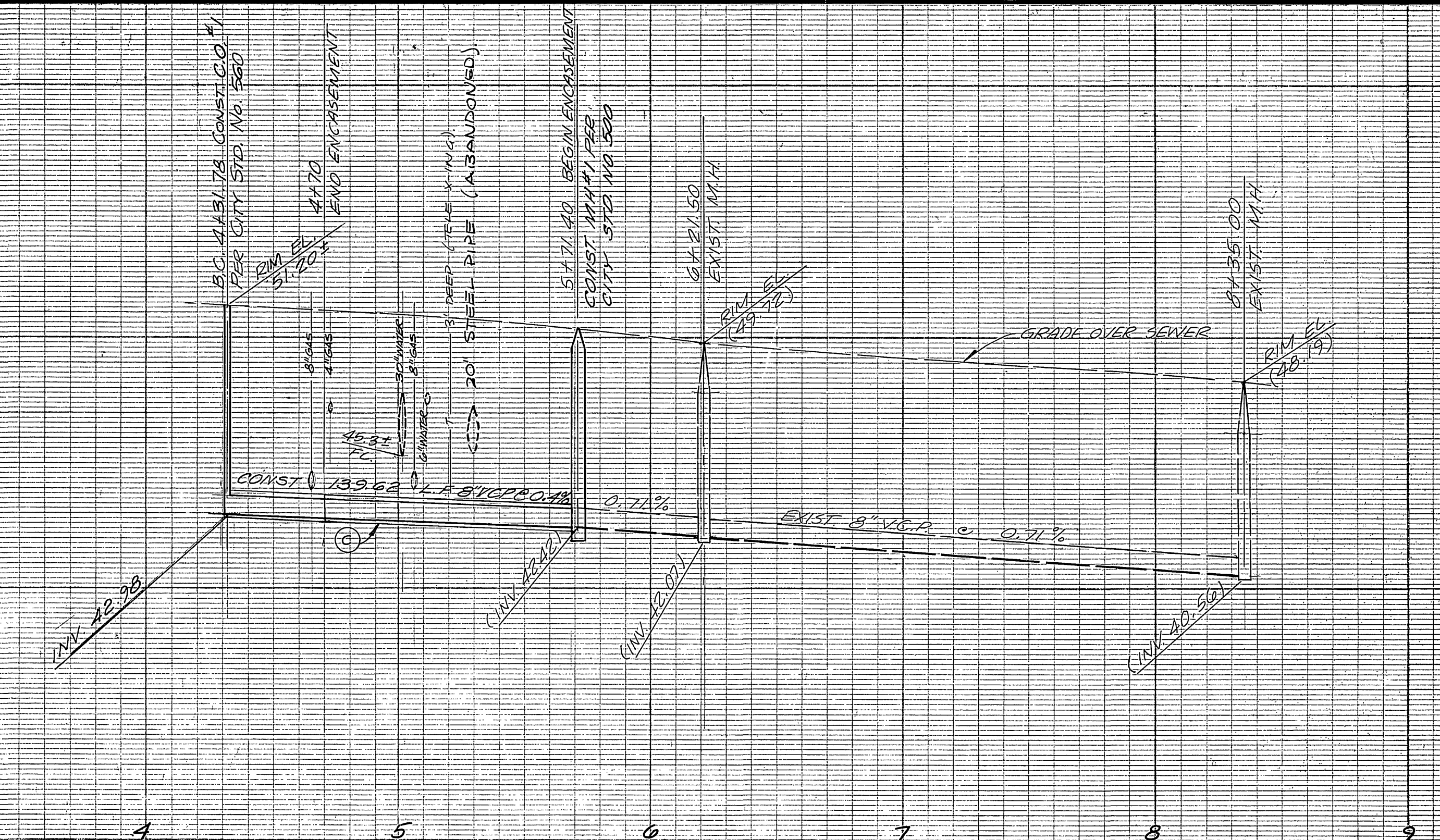


850

840

850

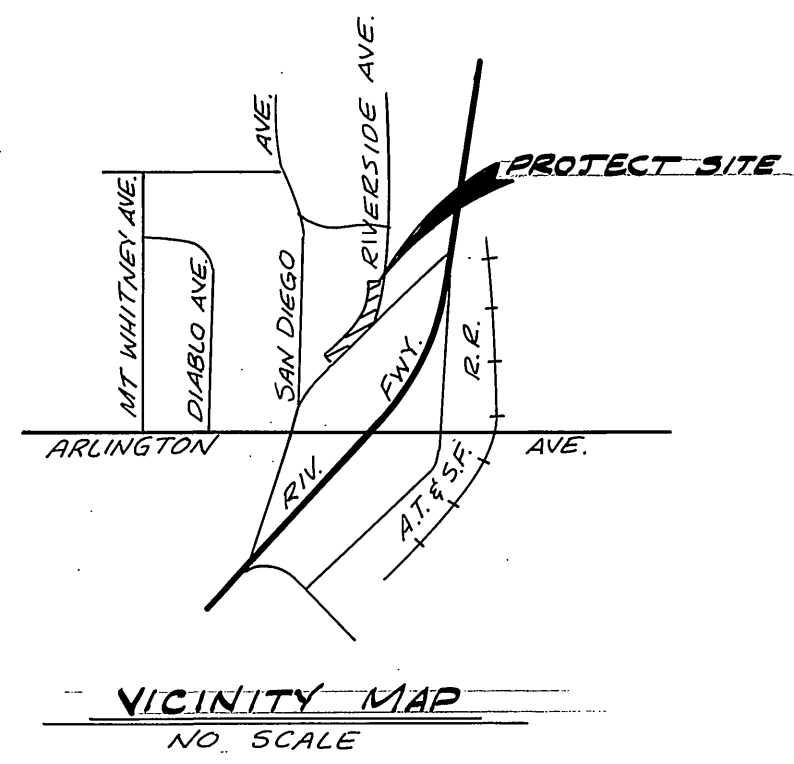
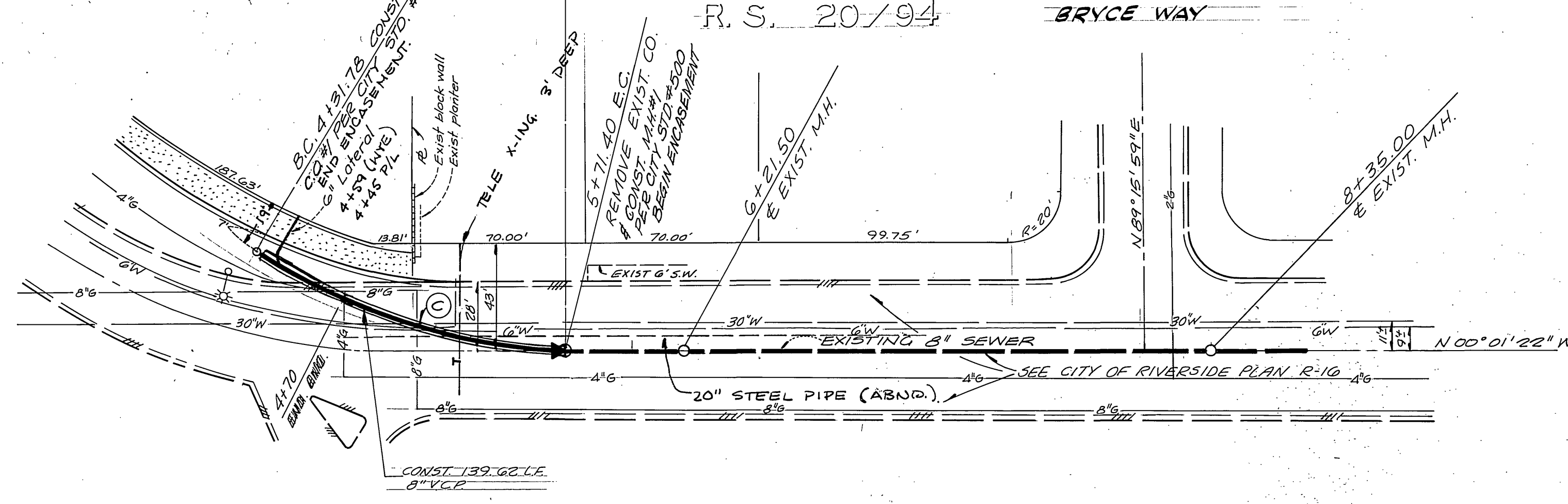
840



SEWER CURVE DATA
 Δ = 32°
 R = 250'
 T = 71.69'
 L = 139.62'

R. S. 20/94

BRYCE WAY



GENERAL NOTES

1. CONSTRUCTION SHALL BE IN ACCORDANCE WITH THE CITY OF RIVERSIDE, DEPARTMENT OF PUBLIC WORKS, STANDARD DRAWINGS, AND THE STANDARD SPECIFICATIONS FOR PUBLIC WORKS CONSTRUCTION, 1976 EDITION.
2. QUANTITIES SHOWN ARE FOR INFORMATION ONLY AND THE CITY OF RIVERSIDE IS NOT RESPONSIBLE FOR THEIR ACCURACY.
3. LOCATION OF LATERALS TO BE DETERMINED IN THE FIELD AT THE DIRECTION OF THE OWNER. AVOID CONFLICT WITH PROPOSED AND/OR EXISTING FACILITIES.
4. CONTRACTOR IS TO VERIFY EXISTING SEWER ELEVATION PRIOR TO CONSTRUCTION.
5. A PLUG SHALL BE INSTALLED AND WILL REMAIN IN PLACE WHERE THE NEW SEWER CONNECTS WITH THE EXISTING SEWER UNTIL THE NEW SEWER IS ACCEPTED BY THE CITY.
6. THE SEWER CONTRACTOR SHALL ADJUST MANHOLES TO FINAL GRADE AFTER PAVING IS COMPLETED.
7. THE PRIVATE ENGINEER SIGNING THESE PLANS IS RESPONSIBLE FOR ASSURING THE ACCURACY AND ACCEPTABILITY OF THE WORK HEREON. IN THE EVENT OF DISCREPANCIES ARISING DURING CONSTRUCTION AS A RESULT OF ERRORS OR OMISSIONS, THE PRIVATE ENGINEER SHALL BE RESPONSIBLE FOR DETERMINING AN ACCEPTABLE SOLUTION AND REVISING THE PLANS FOR APPROVAL BY THE CITY.
8. IT SHALL BE THE RESPONSIBILITY OF THE CONTRACTOR TO CLEAR THE RIGHT OF WAY IN ACCORDANCE WITH THE PROVISIONS OF LAW AS IT AFFECTS EACH UTILITY INCLUDING REGISTRATION LINES AND APPURTENANCES AND AT NO COST TO THE CITY.
9. CONTACT GENE TUCKER AT SOUTHERN CALIFORNIA GAS CO. BEFORE BEGINNING ANY WORK. CALL 781-6115

⊖ ENCASE SEWER WITH TYPE 'C' CONC. ENCASEMENT PER. STD. DWG. C.W.D.-023

RIVERSIDE AVE.

BENCH MARK
 TOP U.S.C. & G. BRASS CAP (A STA NAVE)
 UNDER MON. CAP IN SIDEWALK N.W. COR.
 BROCKTON & ARLINGTON
 EL. 843.015

APPROVED:
 SOUTHERN CALIF. GAS CO.
 DOMESTIC GAS SYSTEM
 OR Mcowan 5/23/78
 CHIEF UTILITIES ENG. GAS

APPROVED:
 CITY OF RIVERSIDE
 DOMESTIC WATER SYSTEM
 Mark Apple 5-23-78
 CHIEF UTILITIES ENG. WATER

NESTE, BRUDIN & STONE
 INCORPORATED
 CIVIL ENGINEERS
 SAN BERNARDINO HENET ESCONDIDO
 APPROVED BY: [Signature]
 REGISTERED CIVIL ENGINEER NO. 15525
 DATE: 2-21-78

NO.	REVISIONS	APPR.	DATE

DESIGNED BY: [Signature] DRAWN BY: [Signature] CHECKED BY: [Signature]

CITY OF RIVERSIDE, CALIFORNIA
 DEPARTMENT OF PUBLIC WORKS
 APPROVED BY: [Signature]
 PRINCIPAL ENGINEER
 PARK DEPARTMENT
 TRAFFIC DIVISION
 CHIEF P. W. ENGR.
 DATE: 5/23/78

SEWER PLAN & PROFILE
 RIVERSIDE AVE.
 371' ± SOUTH OF BRYCE WAY
 TO 236' ± SOUTH OF BRYCE WAY
 ZONING CASE R-41-773
 HORIZ. SCALE: 1" = 40' VERT. SCALE: 1" = 4'

INDEXED RR
 PROJECT NO. 5-1179
 SHEET 1 OF 1
 FILE NO.

* A9 BUILT - 11-20-78