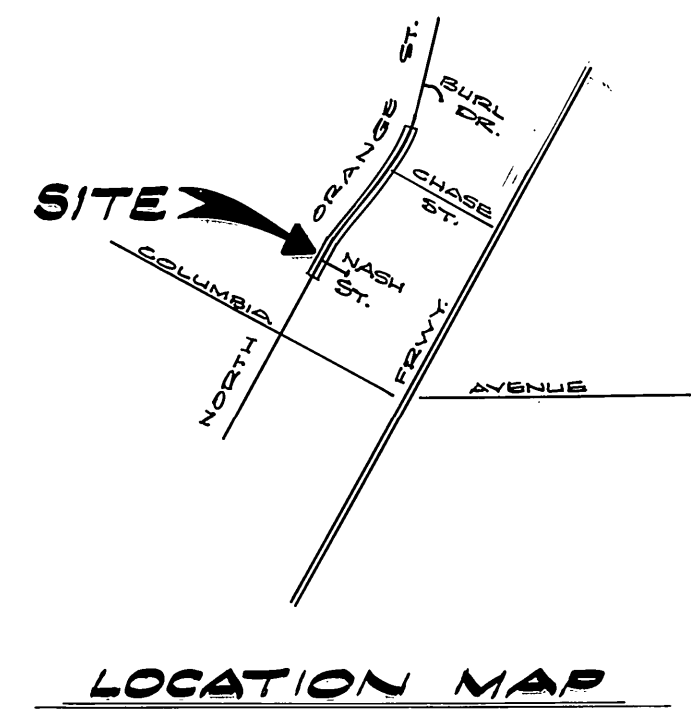
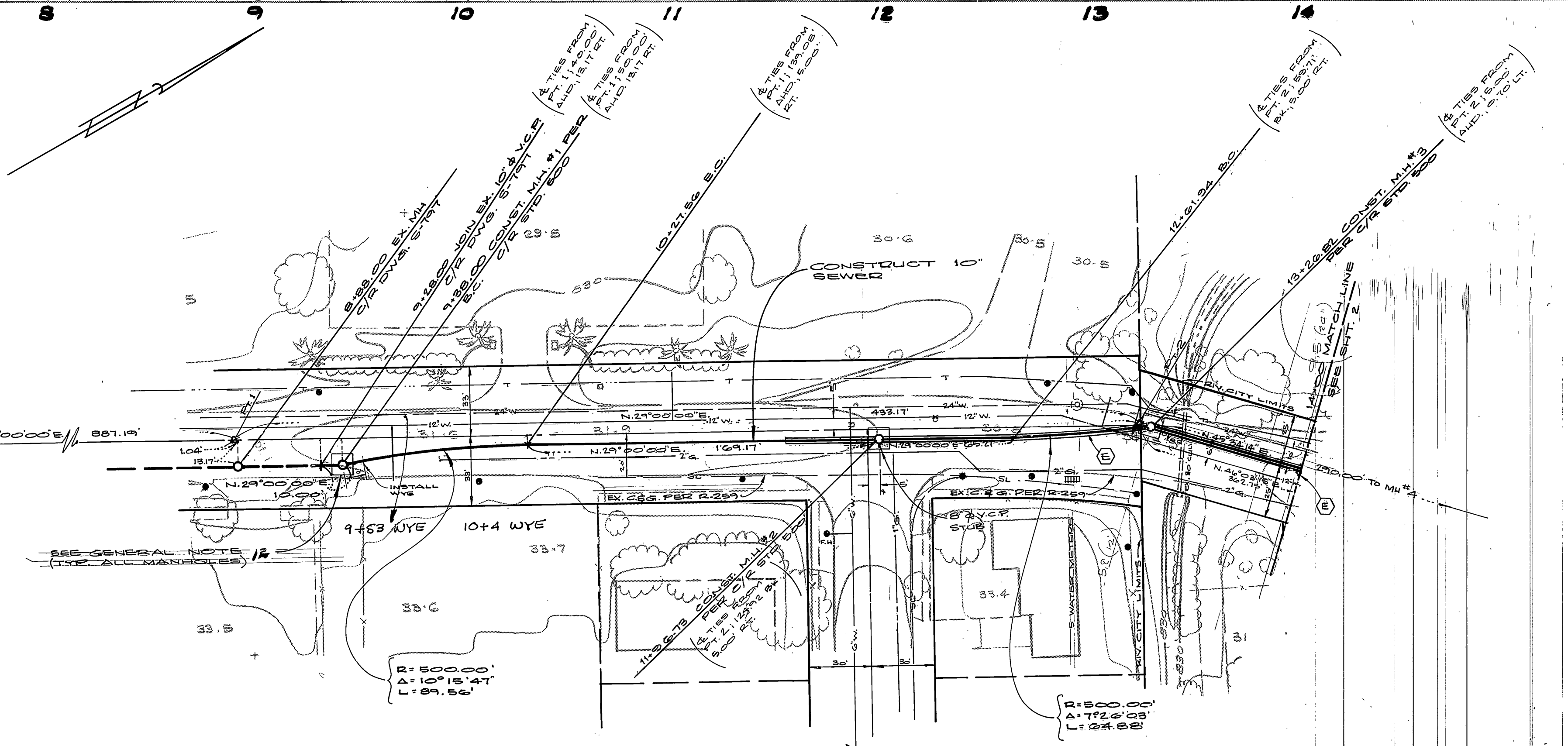


**GENERAL NOTES**

- CONSTRUCTION SHALL BE IN ACCORDANCE WITH STANDARD SPECIFICATIONS FOR PUBLIC WORKS CONSTRUCTION, 1976 EDITION, AND CITY OF RIVERSIDE STANDARD DRAWINGS.
- PIPE SHALL BE BEDDED PER CASE 1, STANDARD DRAWING NO. 452, UNLESS OTHERWISE SPECIFIED ON PLANS.
- LOCATION OF WYES AND LATERALS TO BE DETERMINED AT THE DISCRETION OF THE CITY OF RIVERSIDE.
- ALL STUBS AND LATERALS TO BE CONSTRUCTED IN ACCORDANCE WITH STANDARD DRAWING 522; STUBS TO BE PLUGGED AND CAPPED; ALL LATERALS SHALL HAVE A 1/4" PER FOOT SLOPE.
- MANHOLES, FRAMES AND COVERS TO BE SET TO MEET EXISTING GROUND OR GROUND SURFACES.
- LATERALS TO BE 4" AND EXTENDED TO PROPERTY LINE.
- PRIOR TO CONSTRUCTION OF SEWER, CONTRACTOR IS TO EXPOSE EXISTING SEWER AND CONTACT THE ENGINEER FOR VERIFICATION OF EXISTING LOCATION AND ELEVATION.
- A PLUS SHALL BE INSTALLED AND WILL REMAIN IN PLACE WHERE THE NEW SEWER CONNECTS WITH THE EXISTING SEWER UNTIL THE NEW SEWER IS ACCEPTED BY THE CITY.
- THE EXISTENCE AND LOCATION OF ANY UNDERGROUND UTILITY PIPES OR STRUCTURES SHOWN ON THESE PLANS ARE OBTAINED BY A SEARCH OF THE AVAILABLE RECORDS, TO THE BEST OF OUR KNOWLEDGE, THERE ARE NO EXISTING UTILITIES EXCEPT AS SHOWN ON THESE PLANS.
- THE CONTRACTOR IS REQUIRED TO TAKE DUE PRECAUTIONARY MEASURES TO PROTECT THE UTILITY LINES SHOWN AND ANY OTHER LINES NOT OF RECORD OR NOT SHOWN ON THESE PLANS.
- THE PRIVATE ENGINEER SIGNING THESE PLANS IS RESPONSIBLE FOR ASSURING THE ACCURACY AND ACCEPTABILITY OF THE WORK HEREON. IN THE EVENT OF DISCREPANCIES ARISING DURING CONSTRUCTION AS A RESULT OF ERRORS OR OMISSIONS, THE PRIVATE ENGINEER SHALL BE RESPONSIBLE FOR DETERMINING AN ACCEPTABLE SOLUTION AND REVISING THE PLANS FOR APPROVAL BY THE CITY.
- PERMITTEE SHALL NOTIFY THE RIVERSIDE COUNTY ROAD DEPT. AT 787-6111 AT LEAST 48 HOURS IN ADVANCE OF STARTING CONSTRUCTION [REQUIRED BY COUNTY OF RIVERSIDE].
- A 10' X 10' AREA AROUND ALL MANHOLES SHALL BE PAVED WITH 2" A.C. PAVING OVER 4" CL. III BASE MATERIAL. EXISTING PAVING SHALL BE REMOVED AS REQUIRED.
- EXISTING A.C. PAVING SHALL BE OVERLAPPED WITH MAXIMUM 1" THICKNESS AT SEWER TRENCH TO "C" AS INDICATED (SEE GENERAL NOTE 12) TO PROVIDE SMOOTH CROSSING.
- ENCASE SEWER WITH TYPE "C" CONCRETE ENCASUREMENT PER STD. DWG. C.W.D.-023. (V.C.P. ALTERNATE ONLY)
- ENCASE SEWER 4.5' EACH SIDE OF WATER LINE WITH TYPE "C" CONCRETE ENCASUREMENT AS PER STD. DWG. C.W.D.-023. (V.C.P. ALTERNATE ONLY)



**-CAUTION-**  
PACIFIC TELEPHONE  
CABLES UNDERGROUND  
BEFORE EXCAVATING  
CALL COLLECT:  
7:30 A.M. to 5 P.M.  
After Hours & Holidays  
Orange County 714-633-0811 714-547-6606  
Riverside County 714-684-0071 714-547-6606  
Inyo County 714-684-0071 714-547-6606  
San Bernardino County 714-684-0071 714-547-6606  
Los Angeles County 213-621-3111  
Ventura County 213-621-3111  
San Diego County 714-298-0595 714-232-0027  
FOR FREE CABLE LOCATING SERVICE

COUNTY OF RIVERSIDE  
PACIFIC TELEPHONE  
APPROVED BY: *W. D. ...* DATE *1/15/79*

CITY OF RIVERSIDE  
DOMESTIC SYSTEM  
APPROVED BY: *James ...* DATE *1/15/79*  
CHIEF UTILITIES ENGINEER, WATER

ALBERT A. WEBB ASSOCIATES  
CIVIL ENGINEERS  
RIVERSIDE, CALIFORNIA  
APPROVED BY: *Paul ...* DATE *2/10/79*  
R.E. No. 3876

REVISIONS	DATE	BY
ADDED DRIGCO PIPE ALTERNATE. KBT	1/15/79	JMS
REVISIONS	DATE	BY
ADDED DRIGCO PIPE ALTERNATE. KBT	1/15/79	JMS

CITY OF RIVERSIDE, CALIFORNIA  
PUBLIC WORKS DEPARTMENT  
APPROVED BY: *...* DATE *1/15/79*  
PRINCIPAL ENGINEER  
TRAFFIC DIVISION  
CHIEF PUB. WKS. ENGR.

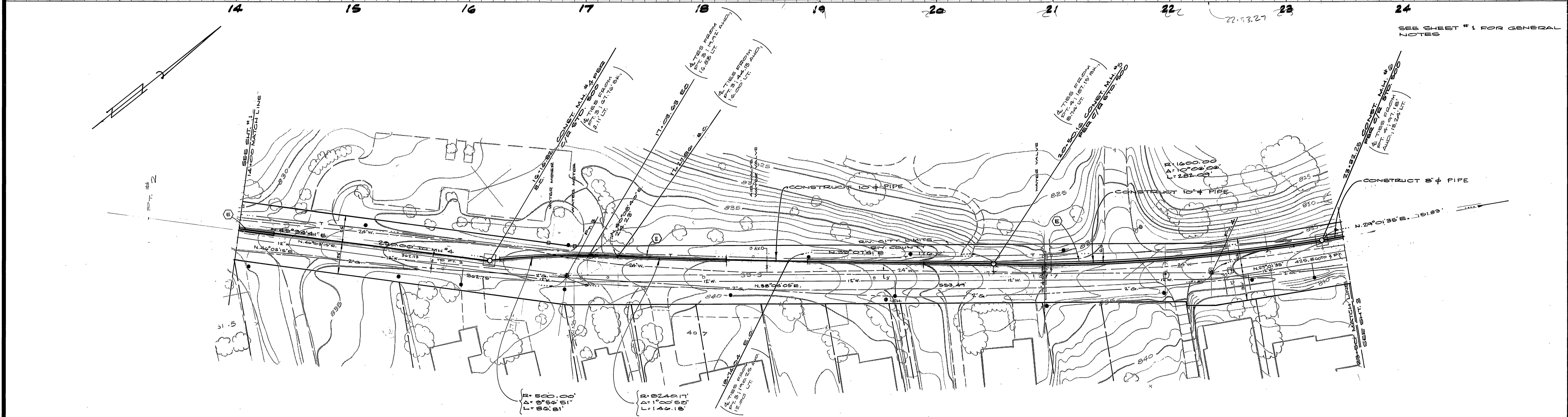
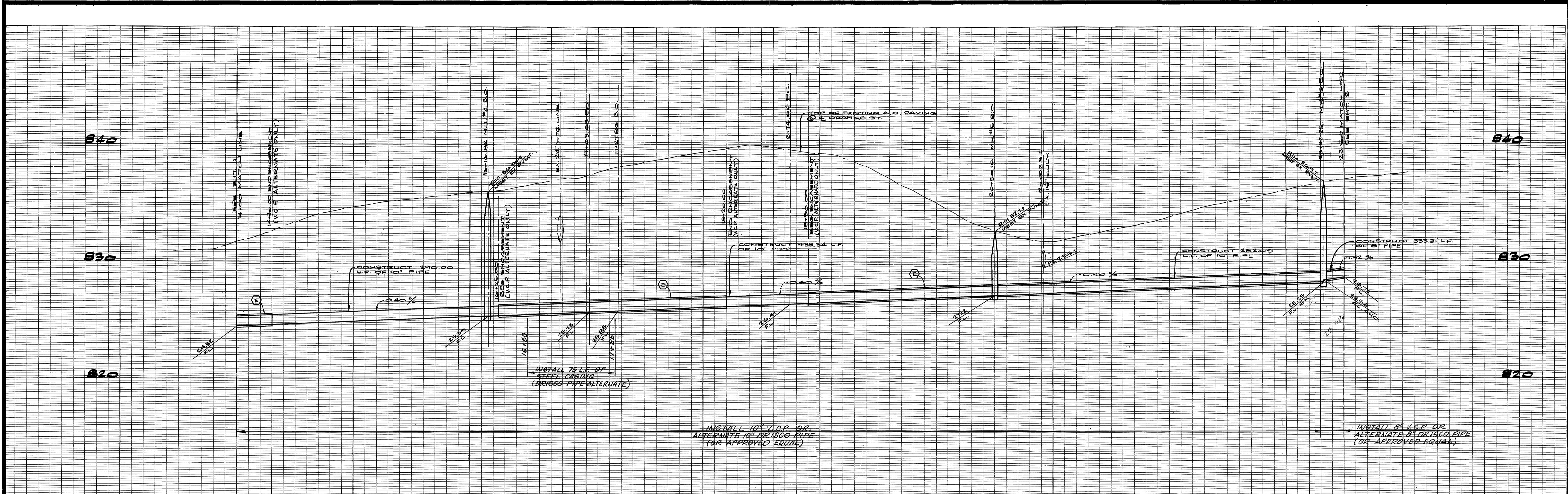
**SEWER PLAN & PROFILE**  
**ORANGE STREET**  
**SEWER EXTENSION**

NORTHERLY CITY LIMITS TO 581.89' NORTHERLY OF CHASE ST.

SCALE: 1"=40' HORIZ.; 1"=4' VERT.

ACCOUNT No. 321-577-504  
DRAWING NUMBER  
**5-1182**  
SHEET **1** OF **3**  
78-143 B





**NORTH ORANGE STREET**

**-CAUTION-**  
**PACIFIC TELEPHONE**  
**CABLES UNDERGROUND**  
**BEFORE EXCAVATING**

CALL COLLECT:  
 7:30 A.M. to 5 P.M. & Holidays  
 Orange County 714-633-0811 714-547-6606  
 Riverside County 714-684-0071 714-547-6606  
 Inyo County 714-684-0071 714-547-6606  
 San Bernardino County 714-684-0071 714-547-6606  
 Los Angeles County 213-621-3111  
 Ventura County 213-621-3111  
 San Diego County 714-298-0595 714-232-0027

24 HOUR SERVICE  
 FOR FREE CABLE LOCATING SERVICE

COUNTY OF RIVERSIDE  
 FOR THE ROAD COMMISSIONER  
 DATE 1/3/79

PACIFIC TELEPHONE  
 APPROVED BY:  
 W. D. ...  
 DATE 1/3/79

CITY OF RIVERSIDE  
 DOMESTIC SYSTEM  
 CHIEF UTILITIES ENGINEER, WATER  
 DATE 1/15/79

**ALBERT A. WEBB ASSOCIATES**  
 CIVIL ENGINEERS  
 RIVERSIDE, CALIFORNIA

APPROVED BY: *Albert A. Webb* DATE 1/15/79  
 R.E. No. 3812

W.O. 18-143 FOR CITY OF RIVERSIDE F.B. 1015/78  
 DESIGNED BY DRS DRAWN BY JMS CHECKED BY DRS

CITY OF RIVERSIDE, CALIFORNIA  
 PUBLIC WORKS DEPARTMENT

APPROVED BY: *Robert L. ...* DATE 1/15/79  
 PRINCIPAL ENGINEER  
 PARK DEPARTMENT  
 TRAFFIC DIVISION  
 CHIEF PUB. WKS. ENGR. DATE 1/15/79

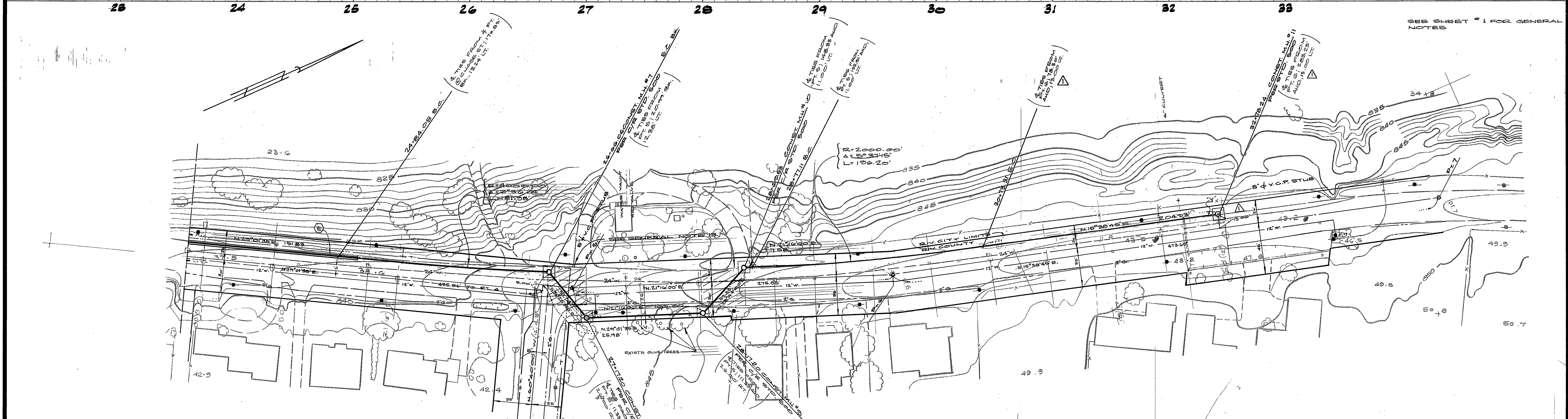
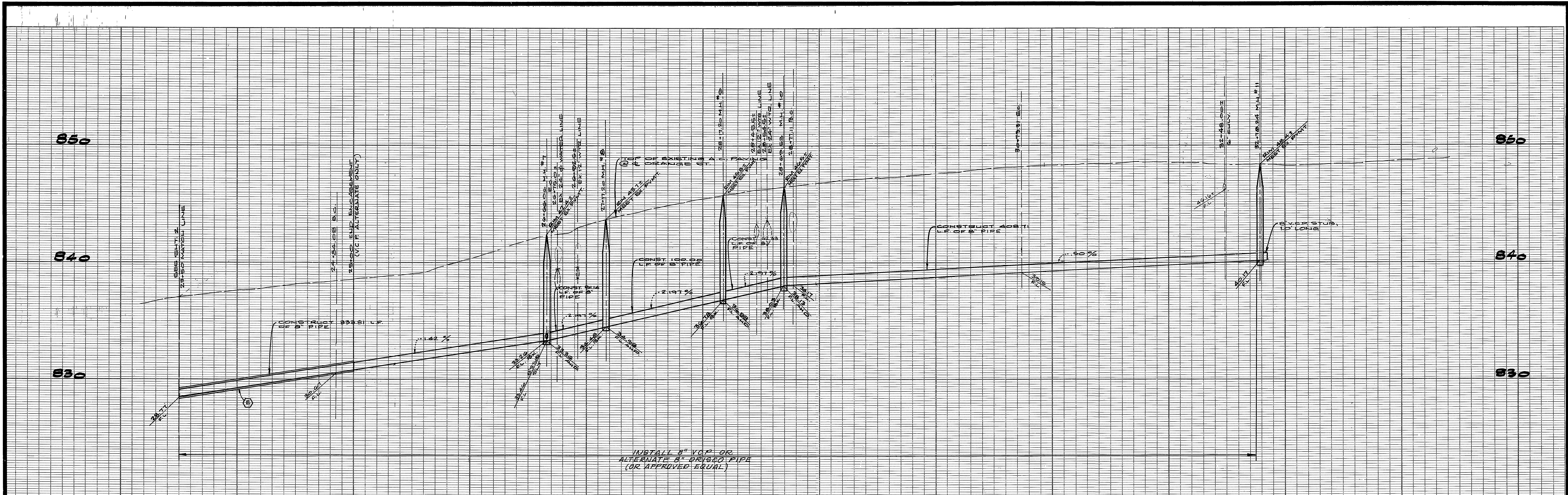
**BENCH MARK**  
 BRASS DISC STAMPED J-T-C AT INTERSECTION OF NASH ST. AND ORANGE ST. IN CAPPED WELL  
 ELEV. = 830.703

\* AS BUILT 11-28-79  
 I-INDEXED 800

ACCOUNT No. 82-577-504  
 DRAWING NUMBER  
**S-1182**  
 SHEET 2 OF 3

SCALE: 1"=40' HORIZ. 1"=4' VERT.





SEE SHEET #1 FOR GENERAL NOTES

SO. CALIF. GAS CO.  
APPROVED BY  
*E.P. Parker* 12/17/78

**-CAUTION-**  
PACIFIC TELEPHONE  
CABLES UNDERGROUND  
BEFORE EXCAVATING  
CALL COLLECT:  
7:30 A.M. to 5 P.M. After Hours & Holidays  
Orange County 714-633-0811 714-547-6606  
Riverside County 714-684-0071 714-547-6606  
Inyo County 714-684-0071 714-547-6606  
San Bernardino County 714-684-0071 714-547-6606  
Los Angeles County 213-621-3111  
Ventura County 714-238-3111  
San Diego County 714-238-3111  
24 HOUR SERVICE  
FOR FREE CABLE LOCATING SERVICE

CITY OF RIVERSIDE  
DOMESTIC SYSTEMS  
APPROVED BY *James K. DeWyn* 11/15/79  
DATE  
CHIEF UTILITIES ENGINEER, WATER

ALBERT A. WEBB ASSOCIATES  
CIVIL ENGINEERS  
RIVERSIDE, CALIFORNIA  
APPROVED BY *Albert A. Webb* DATE *4/11/79*  
R.E. No. 3875  
W.O. 78-148 FOR: CITY OF RIVERSIDE F.B. 10/19/78  
DESIGNED BY *D.R.B.* DRAWN BY *J.M.S.* CHECKED BY *E.P.S.*

MARK	REVISIONS	APP'D.	DATE
▲	ADD 8\"/>		

CITY OF RIVERSIDE, CALIFORNIA  
PUBLIC WORKS DEPARTMENT  
APPROVED BY *Albert A. Webb* DATE *4/11/79*  
PRINCIPAL ENGINEER  
TRAFFIC DIVISION  
CHIEF PUB. WKS. ENGR. *W.R. ...* DATE *4/11/79*

**BENCH MARK**  
BRASS DISC STAMPED J-T-C AT INTERSECTION OF NASH ST. AND ORANGE ST. IN CAPPED WELL  
ELEV. = 830.703  
\* AS BUILT 11-28-79 B.P.  
I. Indexed RMP  
ACCOUNT No. 32-371-504  
DRAWING NUMBER  
**S-1182**  
SHEET **3** OF **3**  
78-148 B