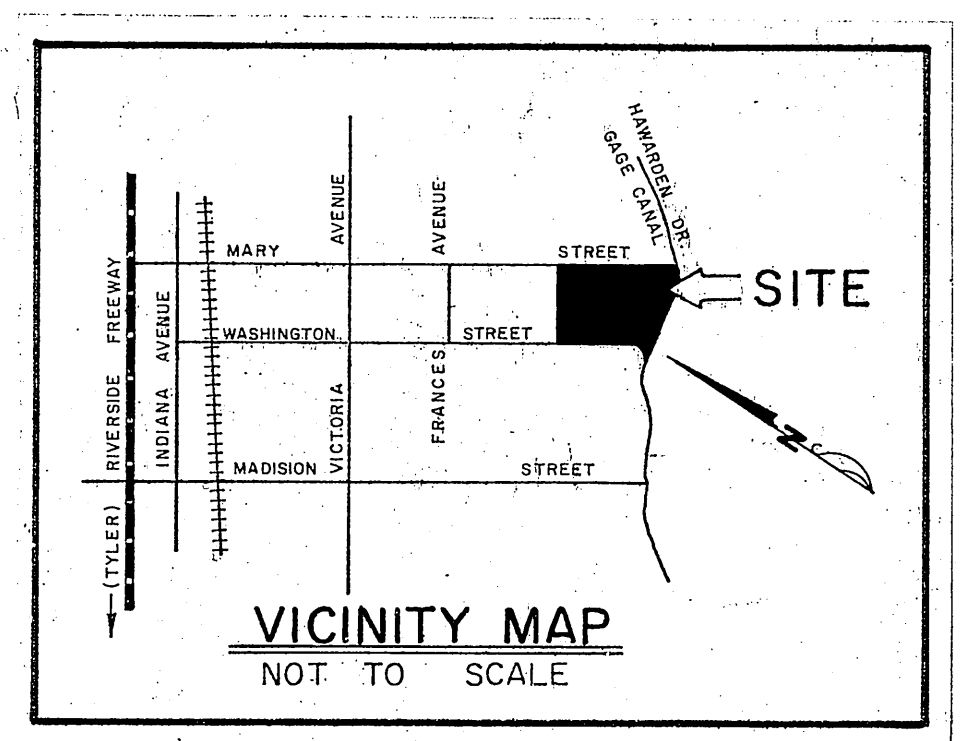


TRACT NO. 8399

VICINITY MAP



GENERAL NOTES

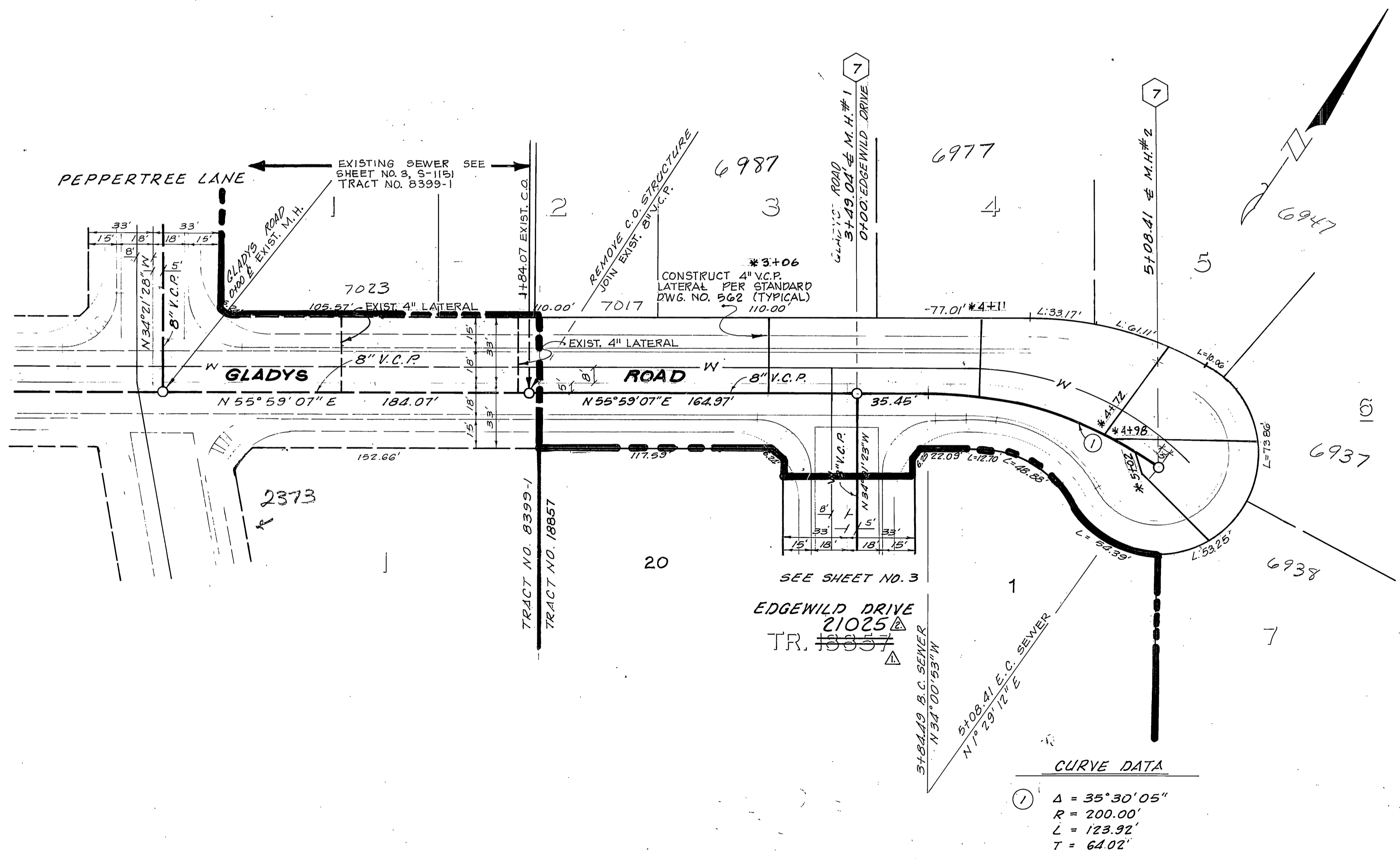
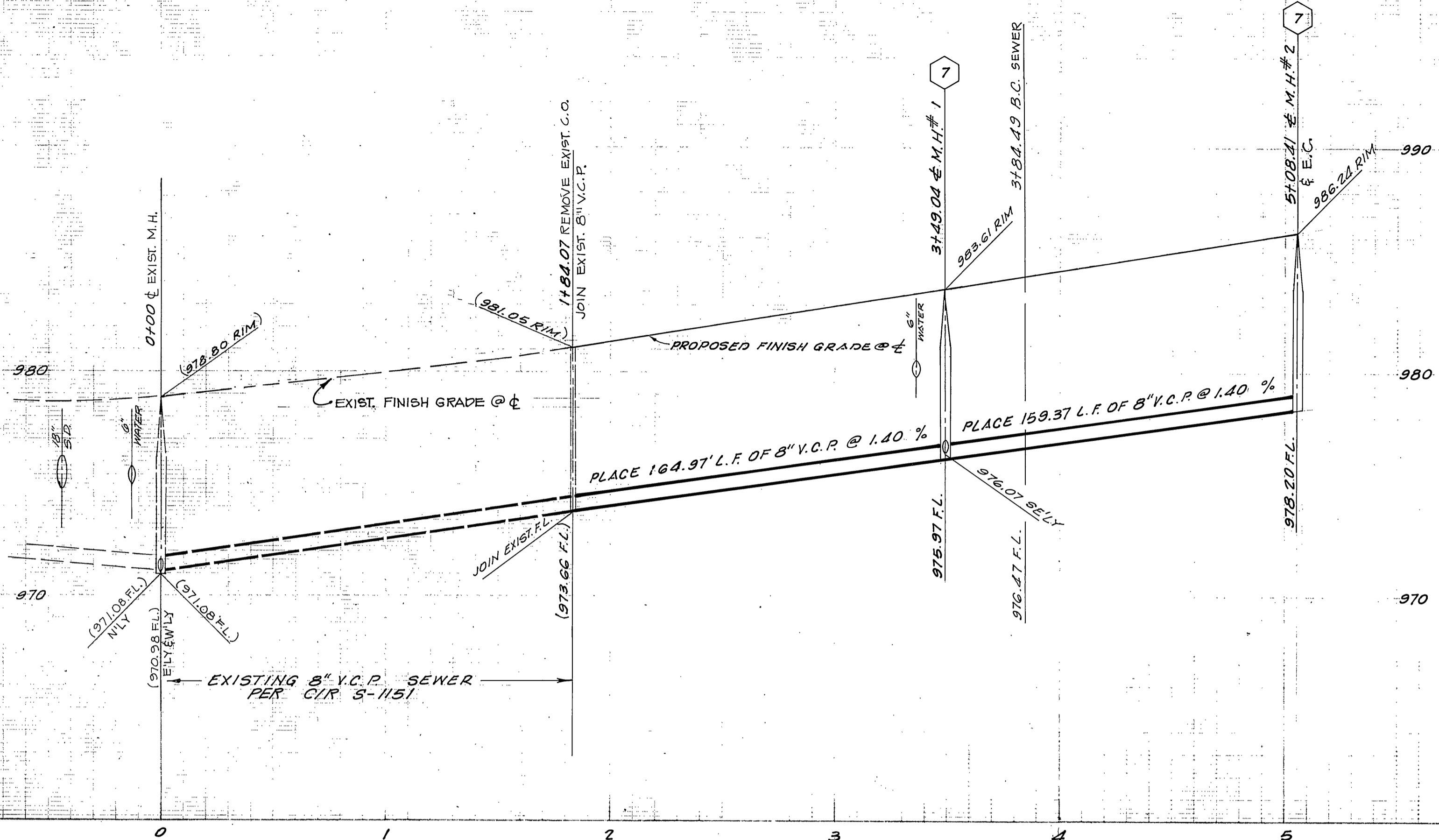
- IT SHALL BE THE RESPONSIBILITY OF THE CONTRACTOR TO CLEAR THE RIGHT OF WAY IN ACCORDANCE WITH THE PROVISIONS OF LAW AS IT AFFECTS EACH UTILITY INCLUDING IRRIGATION LINES AND APPURTENANCES AND AT NO COST TO THE CITY.
- CONSTRUCTION SHALL BE IN ACCORDANCE WITH THE CITY OF RIVERSIDE, DEPT. PUBLIC WORKS, STANDARD DRAWINGS, AND THE STANDARD SPECIFICATIONS FOR PUBLIC WORKS CONSTRUCTION, 1976 EDITION.
- LOCATION OF LATERALS TO BE DETERMINED IN THE FIELD AT THE DIRECTION OF THE OWNER. AVOID CONFLICT WITH PROPOSED AND OR EXISTING FACILITIES.
- CONTRACTOR IS TO VERIFY EXISTING SEWER ELEVATION PRIOR TO CONSTRUCTION.
- THE SEWER CONTRACTOR SHALL ADJUST MANHOLES TO FINAL GRADE AFTER PAVING IS COMPLETED.
- A PLUS SHALL BE INSTALLED AND WILL REMAIN IN PLACE WHERE THE NEW SEWER CONNECTS WITH THE EXISTING SEWER UNTIL THE NEW SEWER IS ACCEPTED BY THE CITY.
- MANHOLES TO BE CONSTRUCTED PER STANDARD DRAWING 500

NOTE:
"The private engineer signing these plans is responsible for assuring the accuracy and acceptability of the work hereon. In the event of discrepancies arising during construction as a result of errors or omissions, the private engineer shall be responsible for determining an acceptable solution and revising the plans for approval by the City."

BENCH MARK
CITY OF RIVERSIDE B.M. F.S.F. SPIKE AND LEAD IN NORTH END OF EASTERLY HEADWALL, WASHINGTON STREET AND GAGE CANAL. ELEV. 1010.56'

CITY OF RIVERSIDE DOMESTIC SYSTEM <i>Wesley J. J. J.</i> CHIEF UTILITIES ENGINEER, WATER DATE 8-24-77	J. F. DAVIDSON ASSOCIATES CIVIL ENGINEERS - SURVEYORS - PLANNERS RIVERSIDE, CALIFORNIA APPROVED BY <i>J. W. City</i> DATE 7/13/77 R.E. No. 12550	CITY OF RIVERSIDE, CALIFORNIA DEPARTMENT OF PUBLIC WORKS APPROVED BY <i>William D. J.</i> DIRECTOR OF PUBLIC WORKS DATE 12-27-78	TITLE SHEET	PROJECT NO.
			TRACT NO. 8399	G-1186
		SEWER IMPROVEMENTS		SHEET 1 OF 4
		TRACT No. 18857 21025		FILE NO. 5554
		HORIZ. SCALE: 1" = 100'		VERT. SCALE: 1" =

*As built 9-24-85 TJE Indexed RMF



CURVE DATA
 ① Δ = 35°30'05"
 R = 200.00'
 L = 123.92'
 T = 64.02'

FOR CONSTRUCTION AND GENERAL NOTES SEE SHEET NO. 1

CITY OF RIVERSIDE
 DOMESTIC SYSTEM
 Chief Utilities Engineer, Water
 Date 8-24-77

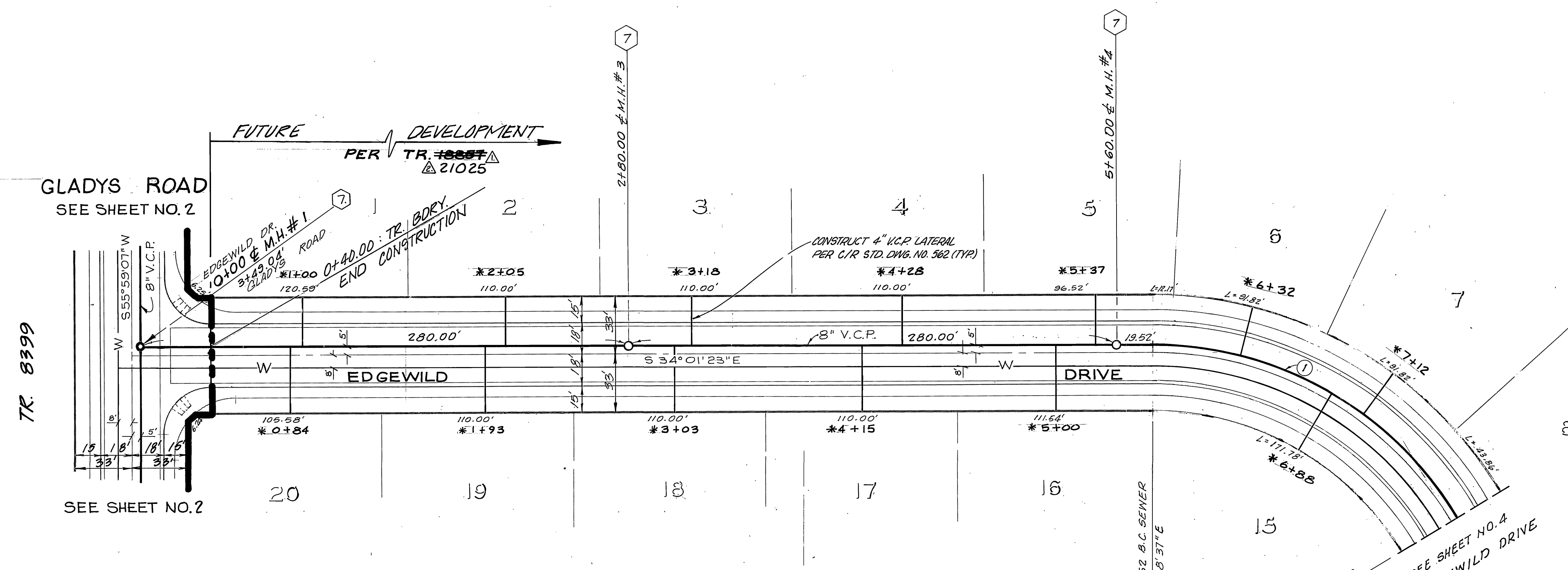
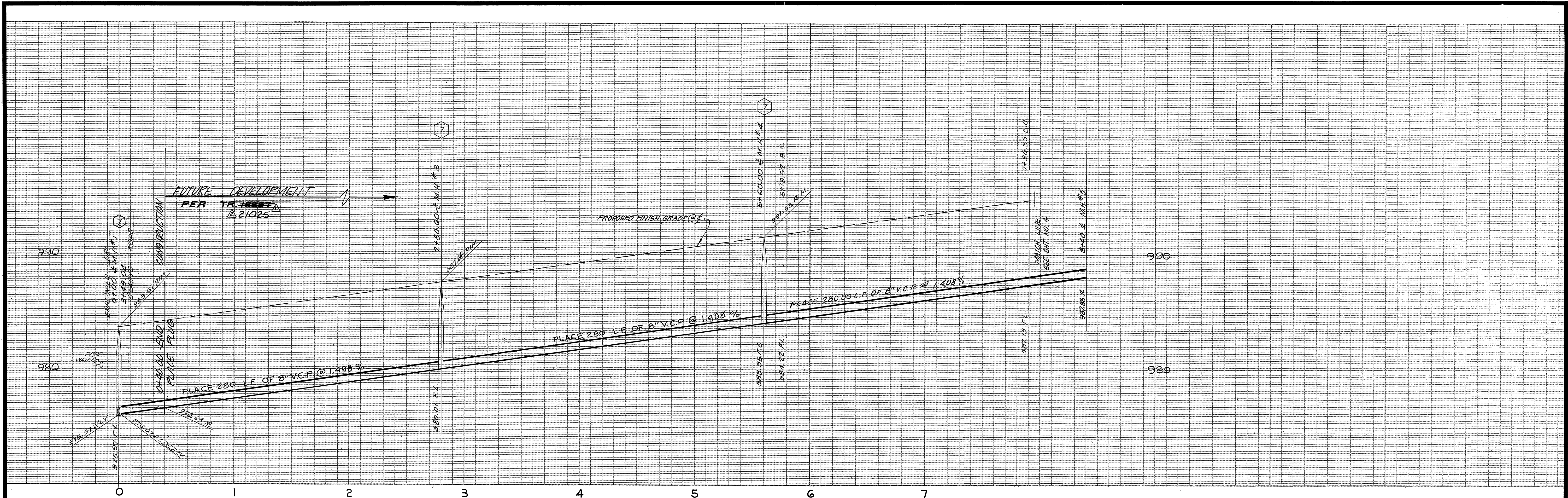
J. F. DAVIDSON ASSOCIATES
 CIVIL ENGINEERS - SURVEYORS - PLANNERS
 RIVERSIDE, CALIFORNIA
 Approved by *John W. Canty* DATE 7/13/77
 R.E. No. 17550

BENCH MARK:
 CITY OF RIVERSIDE B.M. F6F,
 SPIKE AND LEAD IN NORTH END
 OF EASTERLY HEADWALL,
 WASHINGTON ST. & GAGE CANAL. *As built 9-24-85
 ELEV. = 1010.56' Indexed RMF

DESIGNED BY <i>S.F.H.</i>	DRAWN BY <i>A.V.C.</i>	CHECKED BY <i>S.R.H.</i>
REVISIONS	APPR.	DATE
CHANGED TR. 1885 TO TR. 21025	<i>W.D.</i>	11/6/77
ADDED REF TO TENT. TR. 1885	<i>W.D.</i>	5/18/78

CITY OF RIVERSIDE, CALIFORNIA
 DEPARTMENT OF PUBLIC WORKS
 Approved by *William D. Hansen*
 DIRECTOR OF PUBLIC WORKS
 DATE 12-27-78

SEWER PLAN AND PROFILE	PROJECT NO.
TRACT 8399	S-1186
GLADYS ROAD	SHEET 2 OF 4
1184.07 TO 5108.41	FILE NO. 5554
HORIZ. SCALE: 1" = 40'	VERT. SCALE: 1" = 4'



CURVE DATA
 ① $\Delta = 58^{\circ}56'08''$
 $R = 205.00'$
 $L = 210.87'$
 $T = 115.83'$

J. F. DAVIDSON ASSOCIATES
 CIVIL ENGINEERS - SURVEYORS - PLANNERS
 RIVERSIDE, CALIFORNIA
 APPROVED BY *Joh W. Canty* DATE 7/13/77
 R.E. No. 17550
 W.O. B1-7401 FOR ARLINGTON PROR F.B. 10/1/73

FOR CONSTRUCTION AND GENERAL NOTES SEE SHEET NO. 1

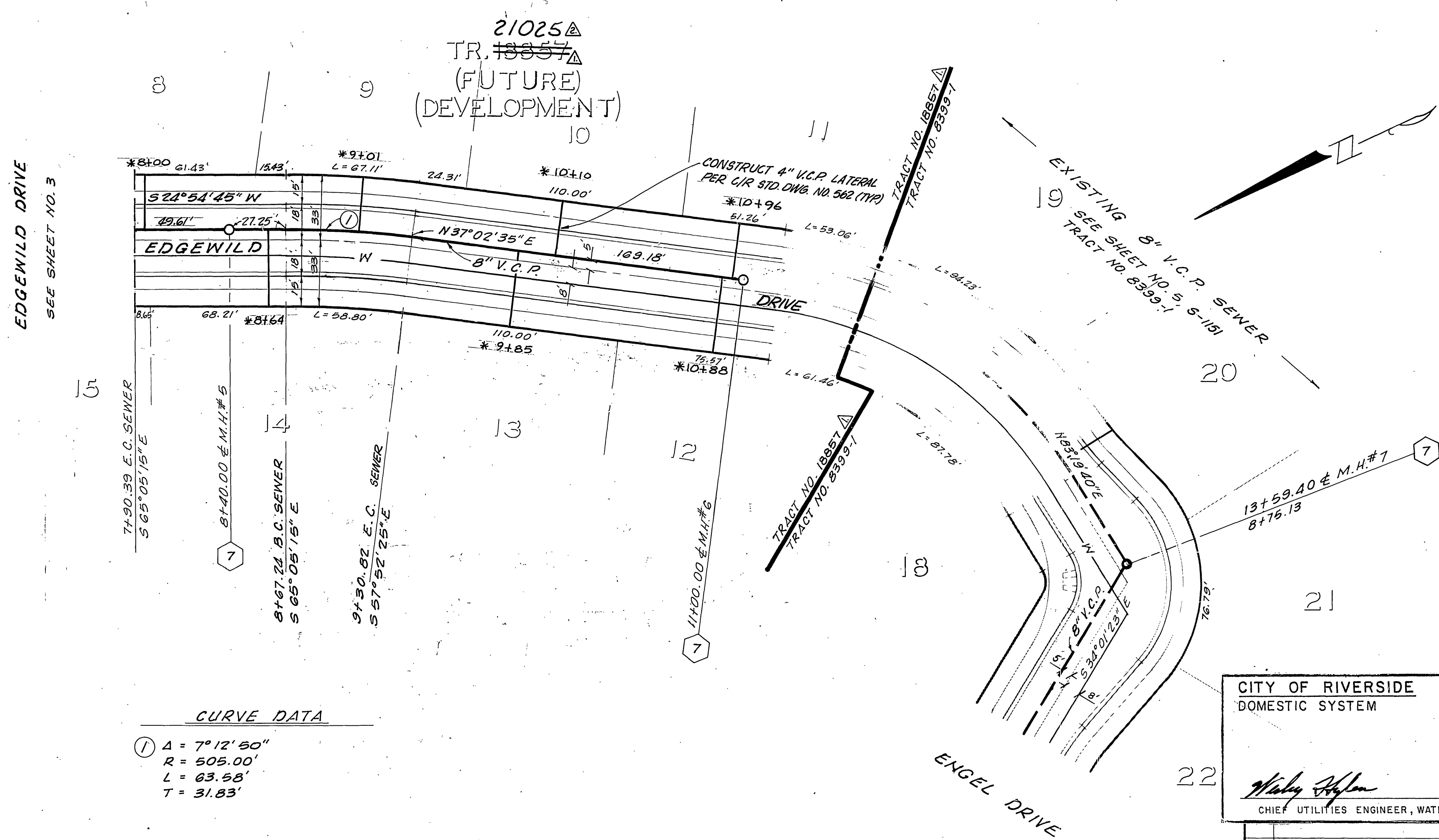
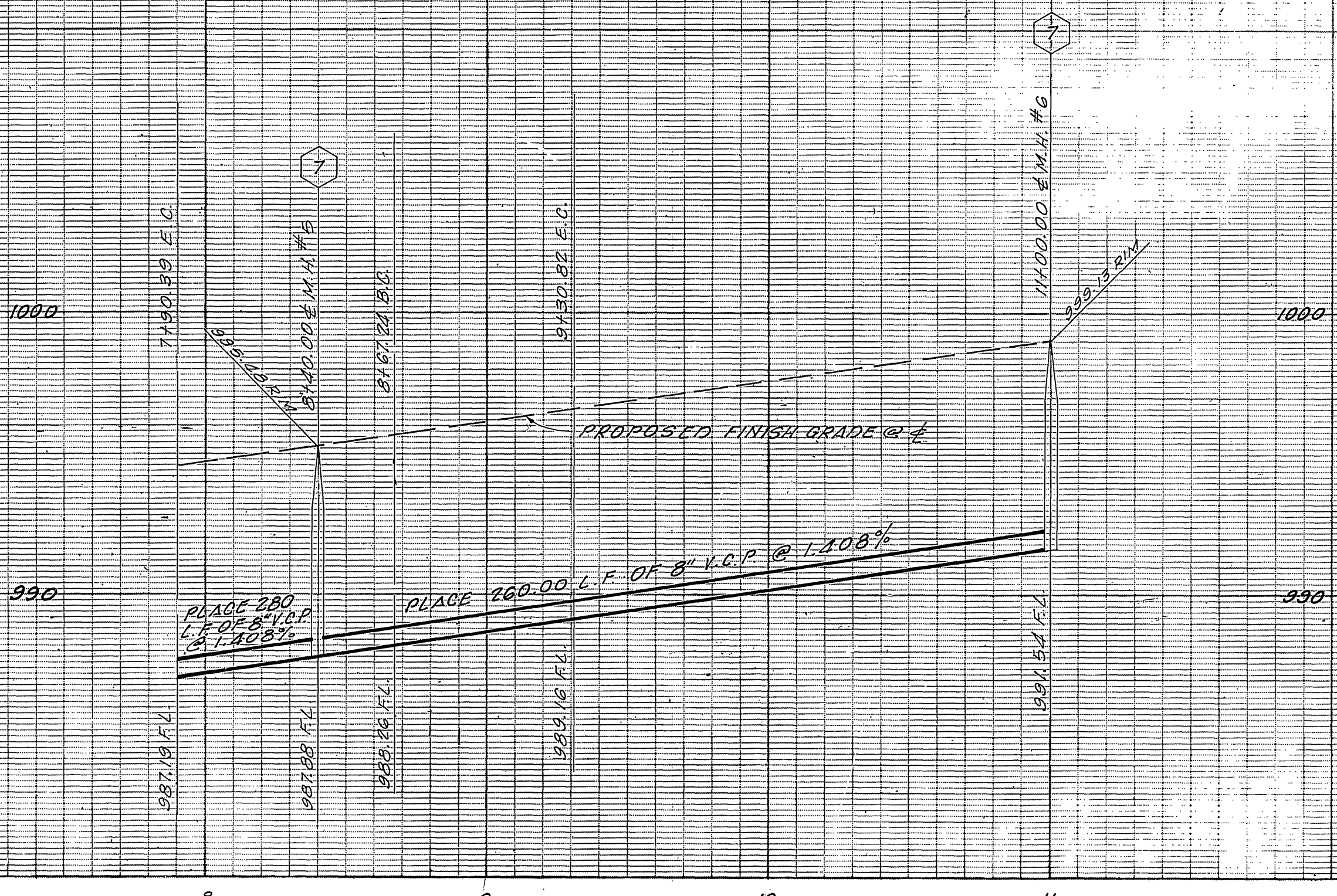
BENCH MARK:
 CITY OF RIVERSIDE S.M. 66F,
 SPIKE AND LEAD IN NORTH
 END OF EASTERLY HEADWALL,
 WASHINGTON ST. & GAGE CANAL
 ELEV. = 1010.56

CITY OF RIVERSIDE
 DOMESTIC SYSTEM
 Chief Utilities Engineer, Water
 DATE 8-24-77

MARK	REVISIONS	APPR.	DATE
Δ	CHANGED TR. 18857 TO TR. 21025	<i>W.D. W.</i>	8-24-77
Δ	ADDED REF. TO TENT. TR. 18857	<i>W.D. W.</i>	8-24-77

CITY OF RIVERSIDE, CALIFORNIA
 DEPARTMENT OF PUBLIC WORKS
 APPROVED BY *William S. Adams*
 DIRECTOR OF PUBLIC WORKS
 DATE 12-27-78

SEWER PLAN AND PROFILE	PROJECT NO.
TRACT 8399 STA. 0+00 TO 0+40	5-1186
EDGEWILD DRIVE	SHEET 3 OF 4
TRACT 18857 STA. 0+40 TO 1+30.39	FILE NO. 5554
HORIZ. SCALE: 1" = 40'	VERT. SCALE: 1" = 4'



CURVE DATA

① $\Delta = 7^\circ 12' 50''$
 $R = 505.00'$
 $L = 63.55'$
 $T = 31.83'$

FOR CONSTRUCTION AND GENERAL NOTES SEE SHEET NO. 1

BENCH MARK:
 CITY OF RIVERSIDE B.M. F6F,
 SPIKE AND LEAD IN NORTH END
 OF EASTERLY HEADWALL,
 WASHINGTON ST. & GAGE CANAL.
 *As built 9-24-85 ELEV = 1010.56' INDEXED RMF

CITY OF RIVERSIDE
 DOMESTIC SYSTEM

Willy Hoffman
 CHIEF UTILITIES ENGINEER, WATER

DATE 8-24-77

J. F. DAVIDSON ASSOCIATES
 CIVIL ENGINEERS - SURVEYORS - PLANNERS
 RIVERSIDE, CALIFORNIA

APPROVED BY *John W. Carty* DATE 7/13/77
 R.E. No. 17550

W.O. 81-7401 FOR ARLINGTON PROP. F.B. 10/1/63

DESIGNED BY AW	DRAWN BY AW	CHECKED BY SRH
CHANGED TR. 18851 TO TR. 21025	W.D. Miller	DATE 12-27-78
ADDED REF. TO TENT. TR. 18851	DATE 12-27-78	
REVISIONS	APPR. DATE	

CITY OF RIVERSIDE, CALIFORNIA
 DEPARTMENT OF PUBLIC WORKS

APPROVED BY *William D. Davidson* DATE 12-27-78
 DIRECTOR OF PUBLIC WORKS

CHIEF P. W. ENGR.

SEWER PLAN AND PROFILE	PROJECT NO.
TRACT #8857 Δ 21025 Δ	9-1186
EDGEWILD DRIVE 7+90.39 TO 11+00.00	SHEET 4 OF 4
HORIZ. SCALE: 1" = 40'	VERT. SCALE: 1" = 4'
FILE NO. 5554	