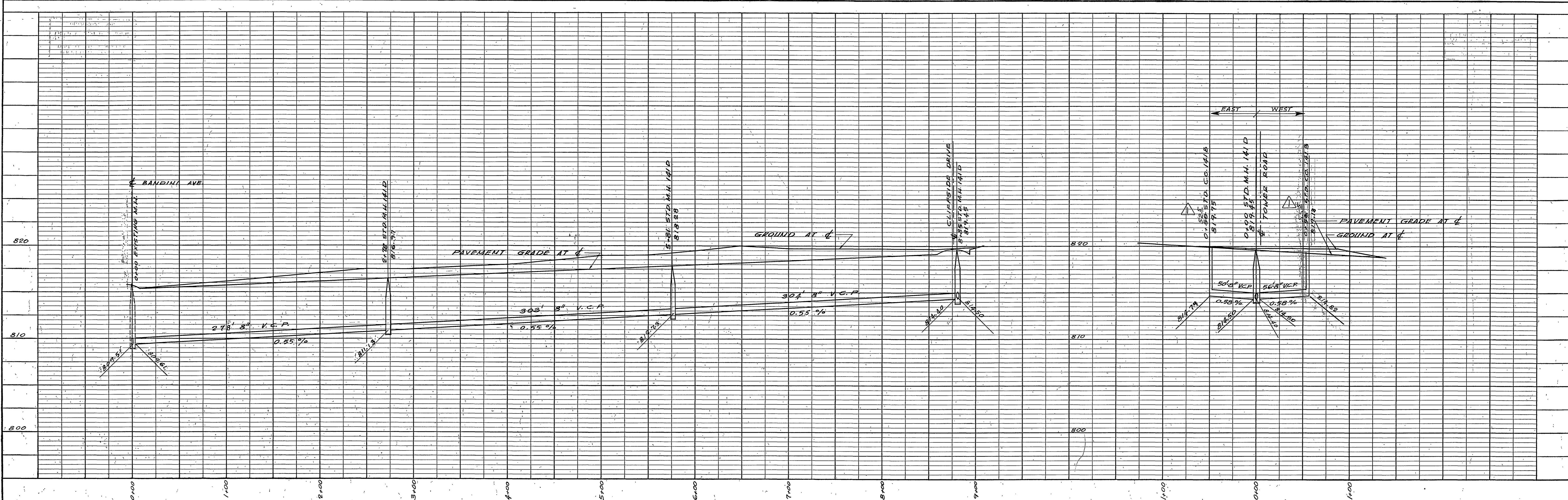
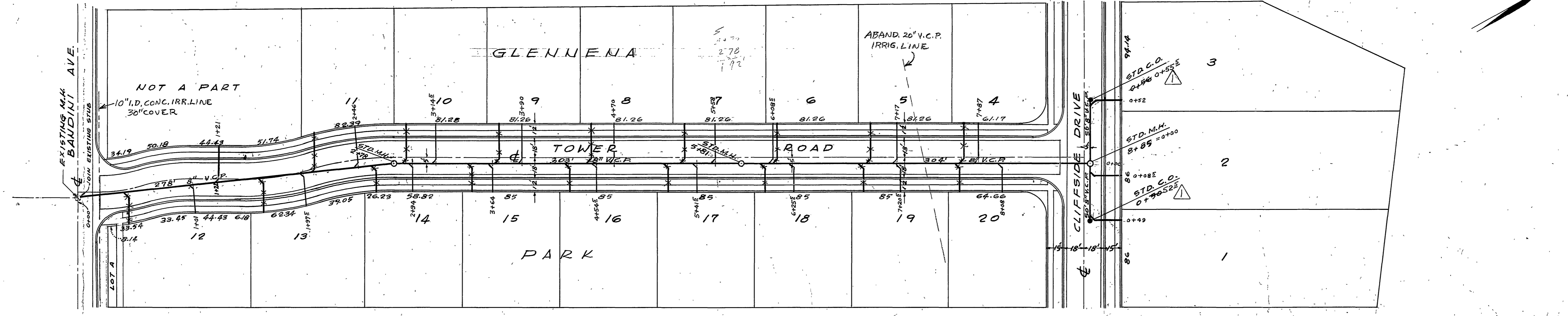


NO.	2410
DATE	BA
BY	
REVISIONS	
CHECKED	
DESIGNED	
DRAWN	
APPROVED	



ESTIMATE OF QUANTITIES  
 991 LIN. FT. 8" V.C.P. SEWER  
 617 LIN. FT. 4" IRRIG. LINE  
 20 - 8"x4" WYES  
 3 MANHOLES  
 2 CLEANOUTS

NO.	2410
DATE	BA
BY	
REVISIONS	
CHECKED	
DESIGNED	
DRAWN	
APPROVED	



NOTE:  
 WYES & LATERALS TO BE LOCATED IN THE FIELD LAY ALL WYES & LATERALS ON MINIMUM GRADE CARRY LATERALS TO P.L.

B.M. SPIKE IN P.P. NO. 60174  
 ELEV. = 817.51

REVISIONS	
AS BUILT	7-1-58

ERIC W. EMTMAN CIVIL ENGINEER  
 R.E. No. 4813  
 RIVERSIDE, CALIFORNIA  
 APPROVED BY [Signature] DATE Feb. 22 1958  
 CITY OF RIVERSIDE, CALIFORNIA  
 DEPARTMENT OF PUBLIC WORKS

SEWER PLAN & PROFILE  
 GLENNENA PARK

HORIZ. SCALE 1"=50' VERT. SCALE 1"=5'

APPROVED BY [Signature]  
 Director of Public Works  
 DATE May 21 1958  
 NO. S-120  
 SHEET 1 OF 1