

General Notes:

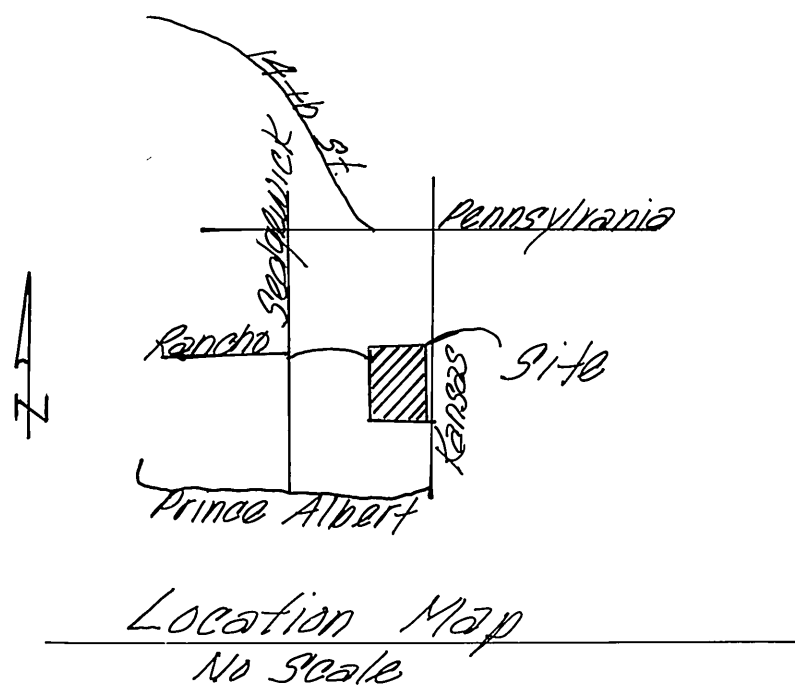
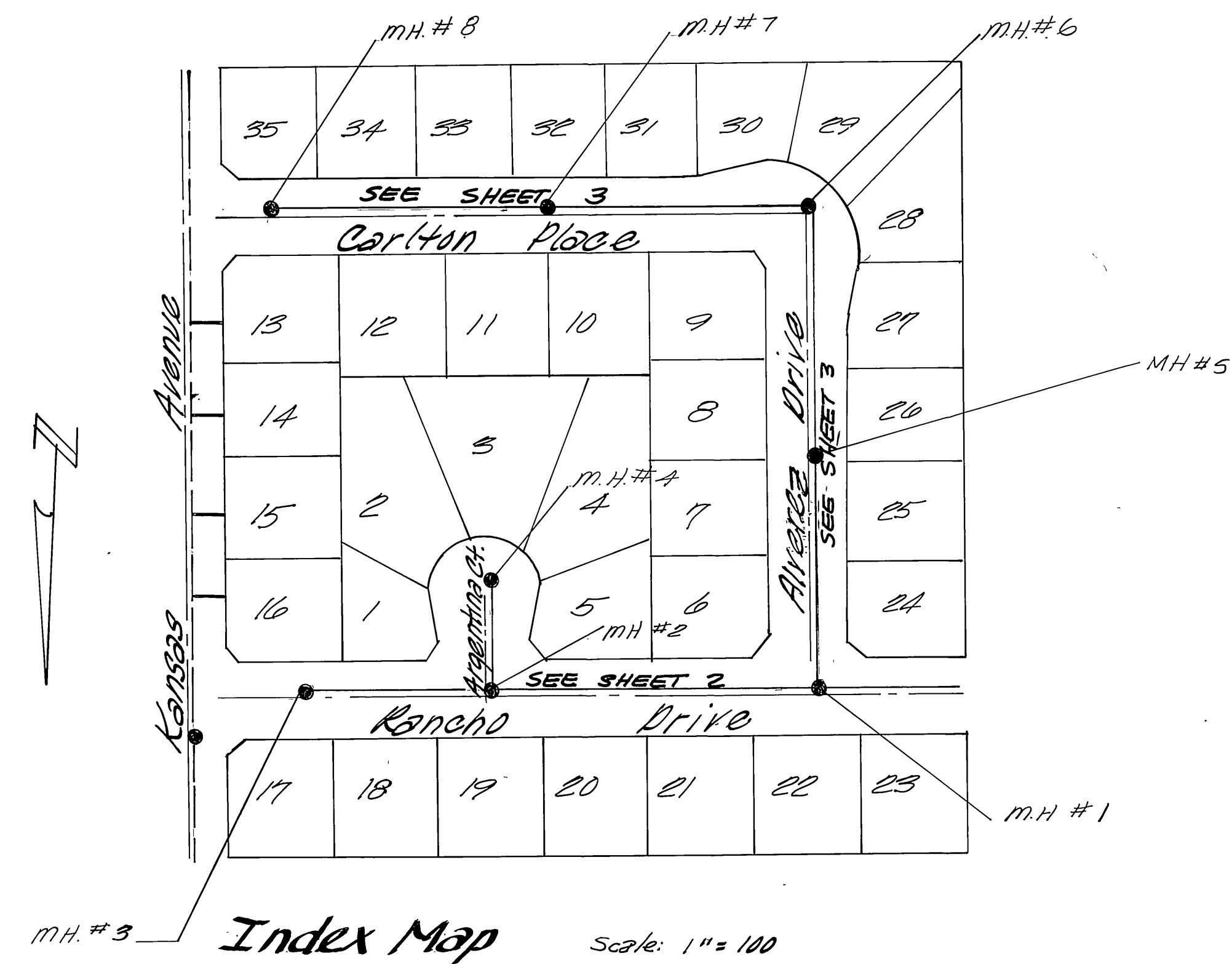
1. Construction shall be in accordance with the standard specifications for Public Works Construction, 1976 Edition and the City of Riverside Standard Drawings.
2. It shall be the responsibility of the contractor to clear the Right of Way, in accordance with the provisions of the law as it affects each utility including irrigation lines and appurtenances and no east to the city.
3. Pipe shall be bedded per Case III STD No. 452
4. Location of wyes to be determined in the field at the direction of the owner. Avoid conflict with proposed and/or existing facilities.
5. All stubs and laterals to be constructed in accordance with standard Drawings No. 502
6. Manhole Frames and covers to be set as noted in profile by sewer contractor after final paving of the streets.
7. Laterals are to be 4" and extend to property line at min. 1/4" per foot slope.
8. Prior to construction of sewer, contractor is to expose the existing sewer and contact the Engineer for verification of existing location and elevation.
9. All flagged elevations shall be staked in the field by the Private Engineer
10. A plug shall be installed and will remain in place where the New sewer connects with existing sewer until such time as new sewer is accepted by the City.
11. The private Engineer signing these plans is responsible for the accuracy and acceptability of the work here on. In the event of discrepancies arising during construction the Private Engineer shall be responsible for determining an acceptable solution and revising the plans for approval by the City.

Notice to Contractor:

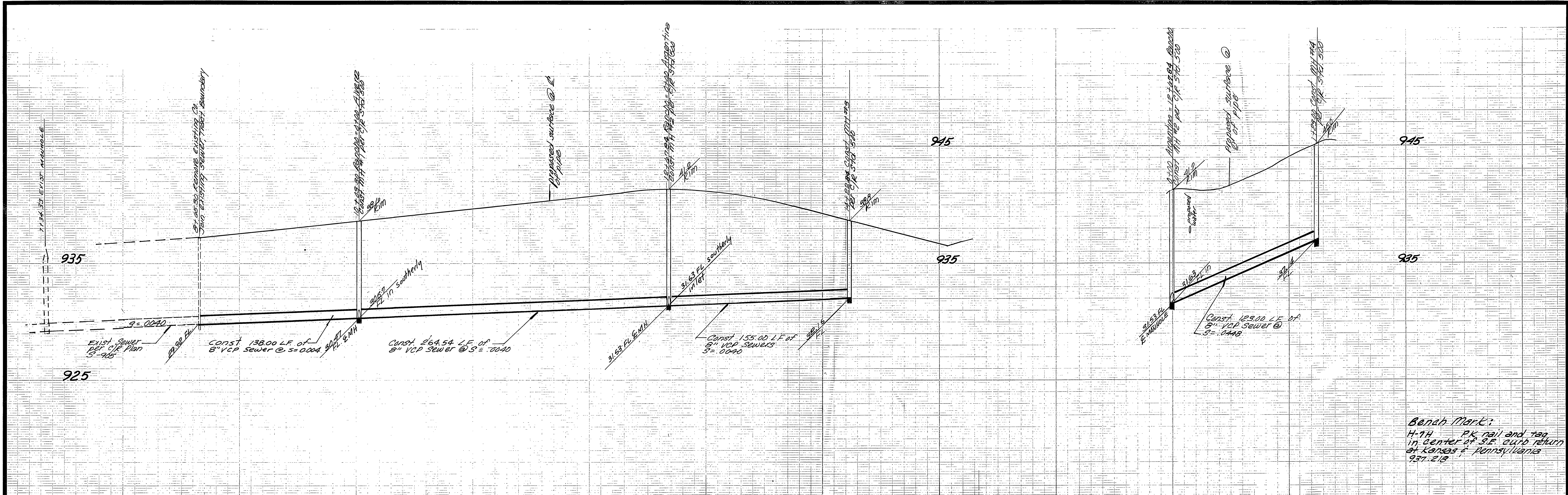
The existence and location of underground utility pipes or structure shown on these plans are obtained by a search of the available records to the best of our knowledge there are no existing utilities except as shown on these plans. The Contractor is required to take due precautionary measures to protect the utility lines shown and any other lines not of record or not shown on these plans.

Bench Mark:

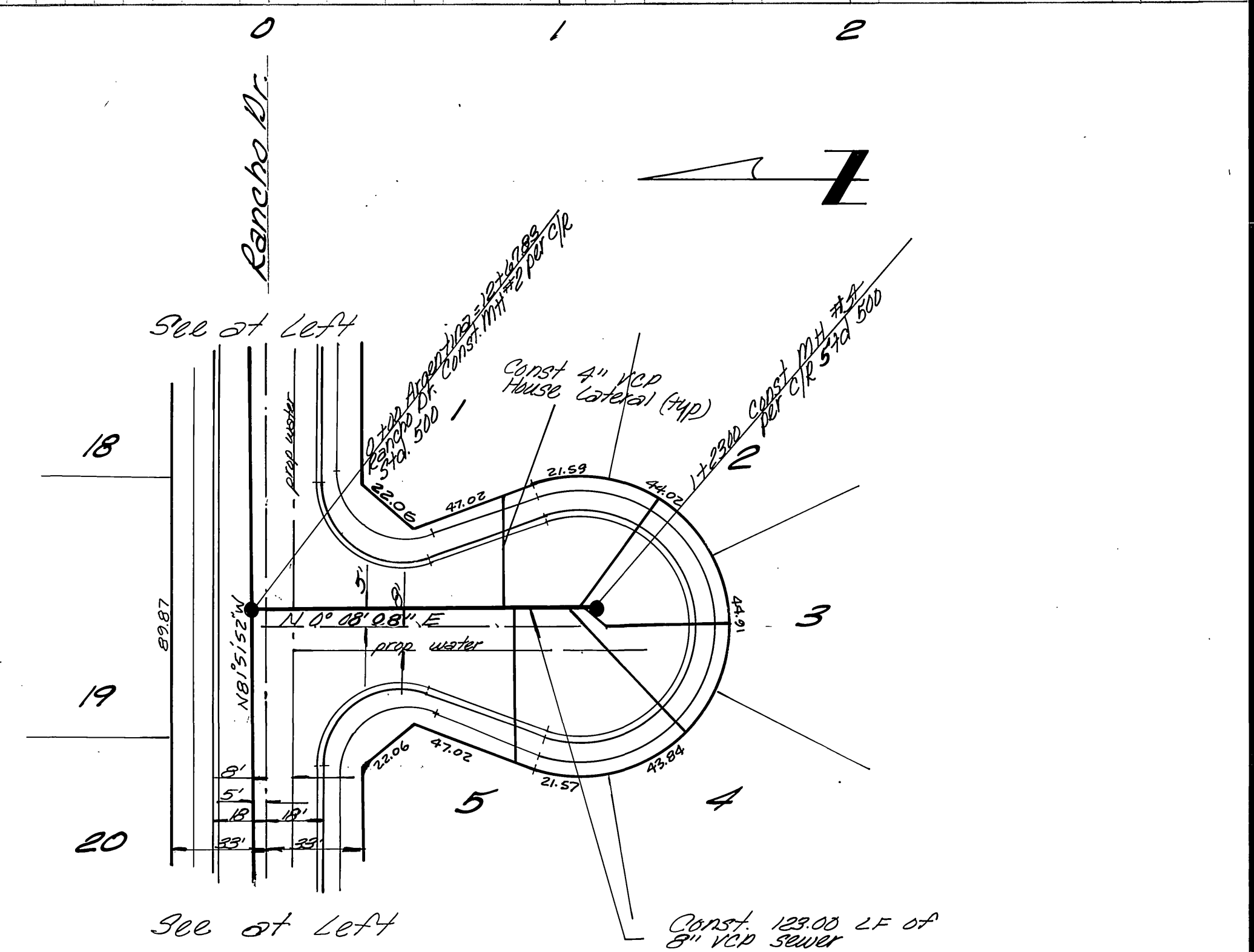
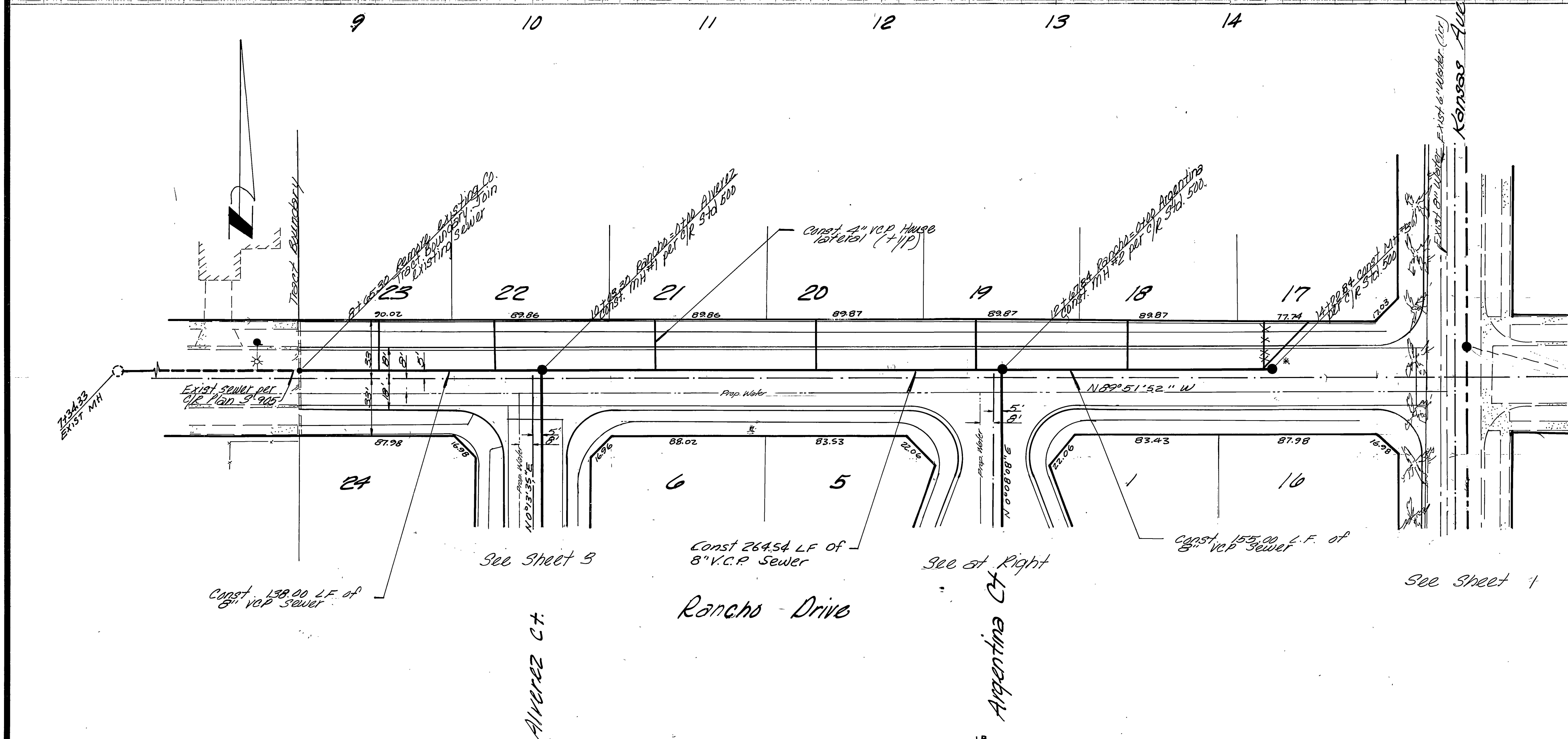
H-T-H PK. nail and tag in center of S.E. curb return at Kansas & Pennsylvania 937.218.



PLANS CHECKED AND FOUND TO COMPLY WITH CITY OF RIVERSIDE REQUIREMENTS: <i>5/16/79</i> BY: <i>See Diagram</i> <i>5-8-79</i> BERRYMAN & STEPHENSON INC. DATE	City of Riverside Domestic System Approved By: <i>See Diagram</i> Chief Utilities Engineer	Esqate Lansing & Assoc. Civil Engineers San Bernardino, Calif. Approved By: <i>See Diagram</i> R.C.E. 21884 Date: <i>5/16/79</i>	CITY OF RIVERSIDE, CALIFORNIA DEPARTMENT OF PUBLIC WORKS APPROVED BY: <i>See Diagram</i> PRINCIPAL ENGINEER PARK DEPARTMENT TRAFFIC DIVISION CHIEF P. W. ENGR.	* AS BUILT SET 4-3-81 INDEXED RME PROJECT NO. 77-11 S-1201 SHEET 1 OF 3 FILE NO. 77-11-5 HORIZ. SCALE: 1" = VERT. SCALE: 1" =
	DESIGNED BY: <i>BE</i> DRAWN BY: <i>R.D.</i> CHECKED BY:			DATE: <i>5/16/79</i>



Bench Mark:
 H-74 PK rail and top
 in center of S.E. curb return
 at Kansas & Pennsylvania
 937.218

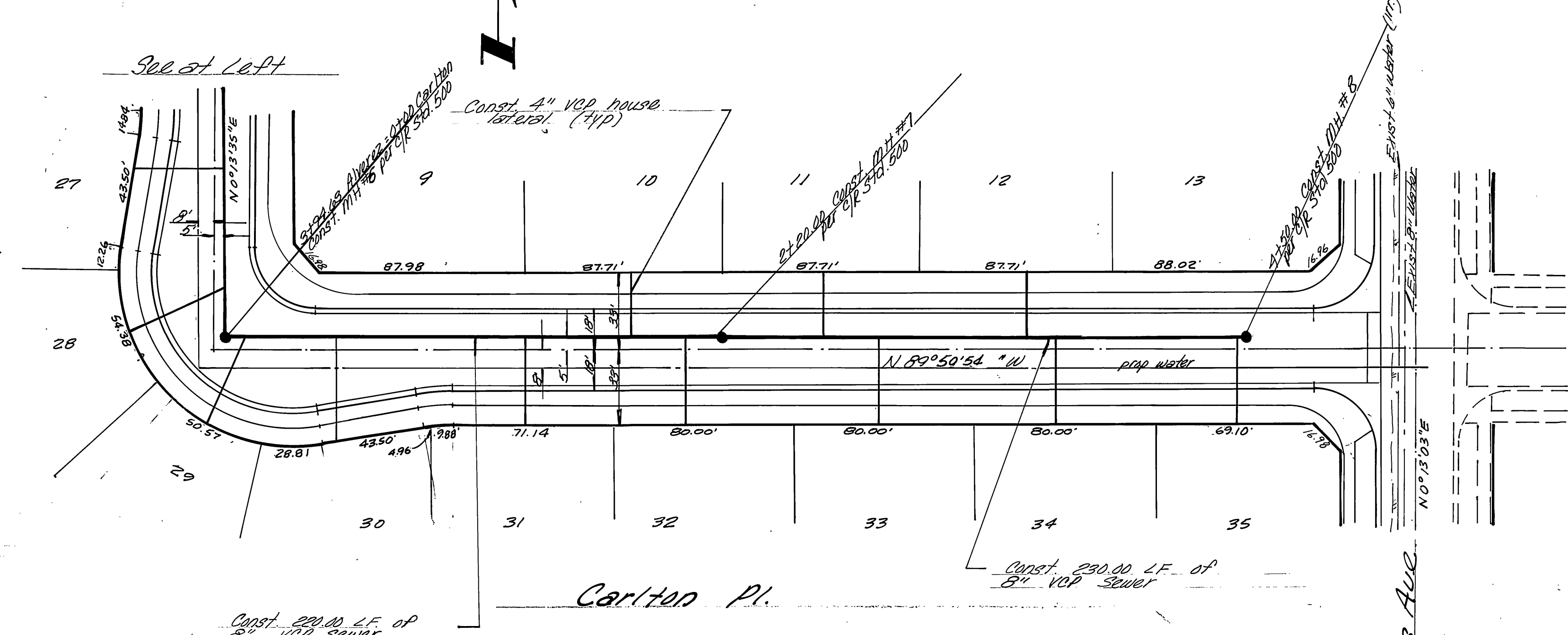
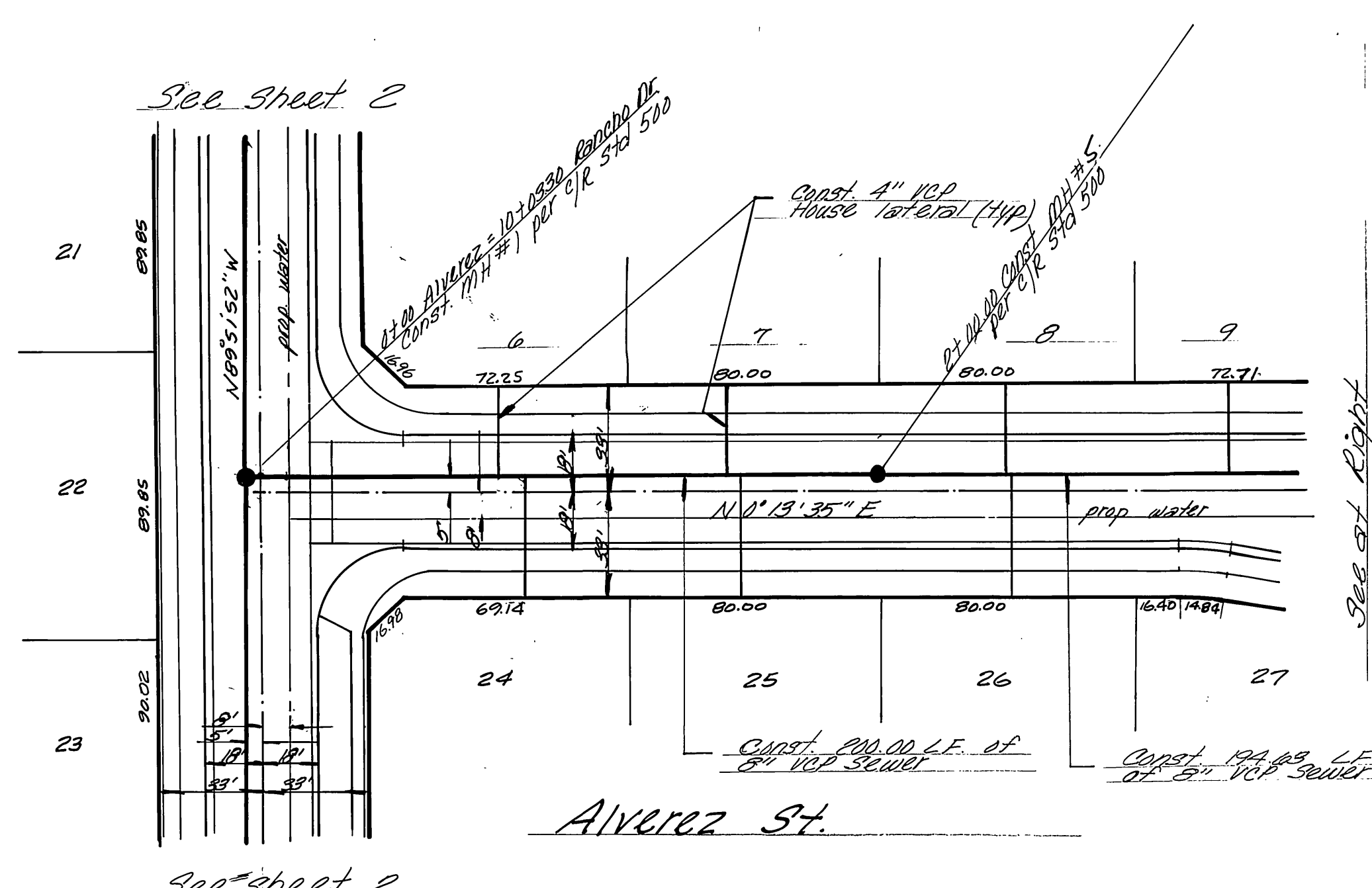
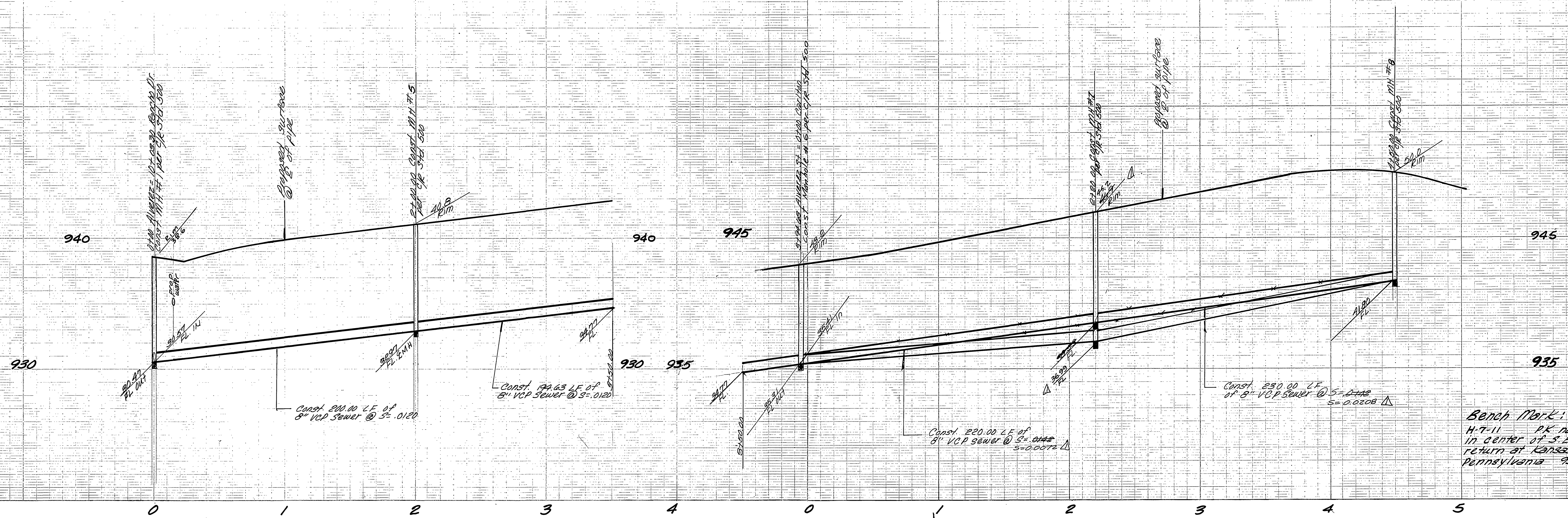


Note: see sheet #1 for General Notes

* * * BUILT Part 4/3/81

Indorsed RWF

PLANS CHECKED AND FOUND TO COMPLY WITH CITY OF RIVERSIDE REQUIREMENTS: 4/16/51/77 BY: <i>Ray J. Perryman</i> CIVILS 5-8-79 BERRIMAN & STEPHENSON INC. DATE	City of Riverside Domestic System Approved By <i>David Rantz</i> Date 5/16/79 Chief Utilities Engineer, Water	Esqate Lansing & Assoc. Civil Engineer San Bernardino, Calif. Approved By <i>Brigid Esqate</i> R.C.E. 01884 Date 4/3/78	CITY OF RIVERSIDE, CALIFORNIA DEPARTMENT OF PUBLIC WORKS	Sewer Plan & Profile Rancho Drive Between Alvarez & Kansas Argentina Court Southernly of Rancho Tract 10958	PROJECT NO. 77-11 S-1201 SHEET 2 OF 3 FILE NO. 77-11-B
	APPROVED BY PRINCIPAL ENGINEER PARK DEPARTMENT TRAFFIC DIVISION CHIEF P. W. ENGR.	BY: <i>[Signature]</i> DATE: 5/11/79	APPROVED BY DIRECTOR OF PUBLIC WORKS DATE: 5/16/79	HORIZ. SCALE: 1" = 40' VERT. SCALE: 1" = 4'	Indorsed RWF



Note: see sheet #1 for General Notes

City of Riverside Domestic System Approved By: <i>[Signature]</i> Chief Utilities Engineer Date: 5/16/79		Esqate, Lansing & Assoc. Civil Engineers San Bernardino, Calif. Approved By: <i>[Signature]</i> R.C.E. 21884 Date: 5/16/79		Lowered MH # 7 to provide sufficient cover on sewer 5-24-79		CITY OF RIVERSIDE, CALIFORNIA DEPARTMENT OF PUBLIC WORKS Approved By: <i>[Signature]</i> Chief P. W. Engr. Date: 5/16/79		Sewer Plan & Profile Carlton Place Alverez to Kansas Rancho to Carlton Alverez Street Tract 10958 HORIZ. SCALE: 1" = 40' VERT. SCALE: 1" = 4'		PROJECT NO. 77-11 S-1201 SHEET 3 OF 3 FILE NO. 77-11-B	
--	--	--	--	--	--	--	--	---	--	---	--

PLANS CHECKED AND FOUND TO COMPLY WITH CITY OF RIVERSIDE REQUIREMENTS: 5/16/79

BY: BERTRAMAN & STEPHENSON INC. DATE: 5-9-79

* 85 BUILT Part 4-3-81

Indexed RMP