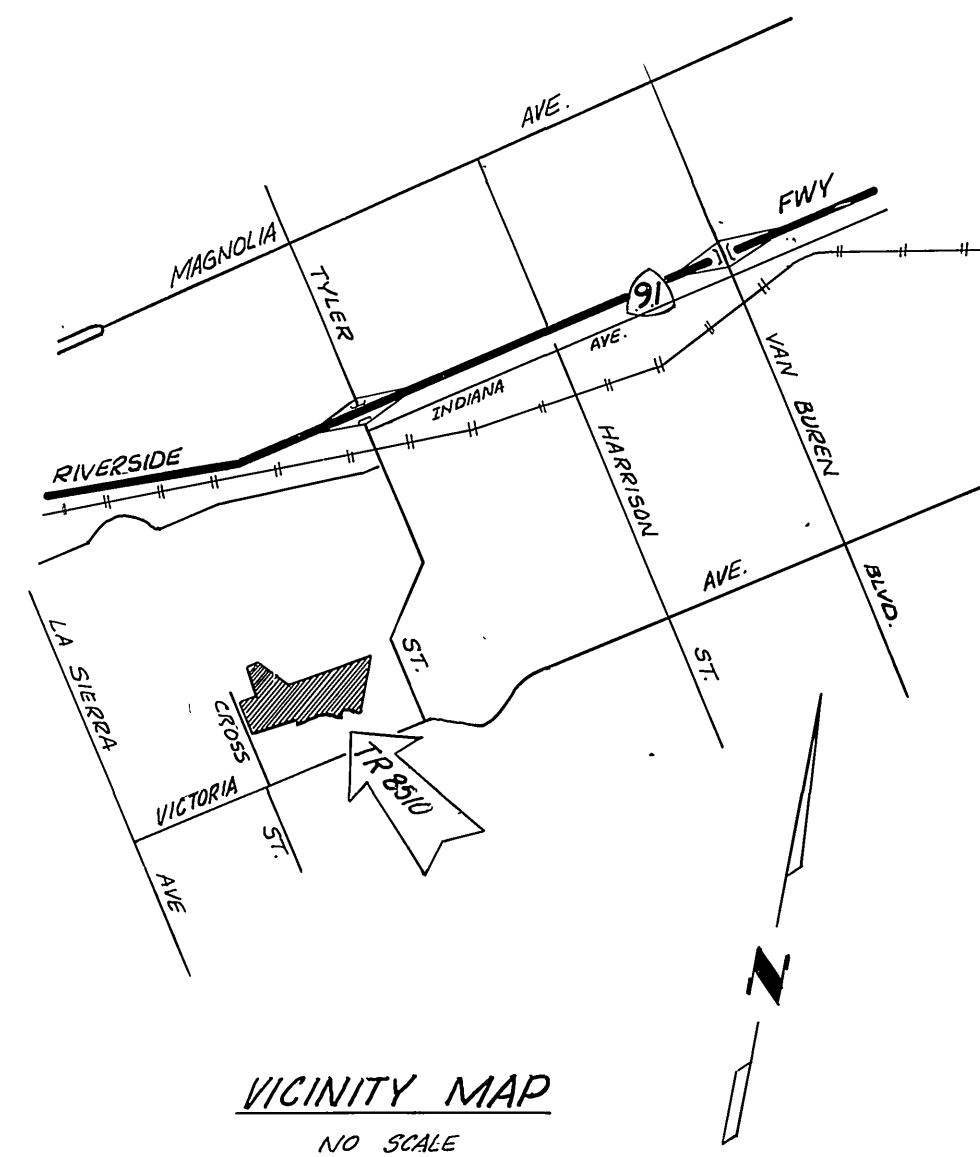


INDEX MAP  
SCALE 1" = 100'



GENERAL NOTES:

1. Construction shall be in accordance with Standard Specifications for Public Works Construction, 1976 Edition, and City of Riverside Standard Drawings.
2. It shall be the responsibility of the Contractor to clear the right of way in accordance with the provisions of law as it affects each utility including irrigation lines and appurtenances and at no cost to the City.
3. Location of vyes and laterals to be determined at the direction of the Owner.
4. Manhole frames and covers to be set to proposed pavement grades.
5. Laterals are 4-inches and extend to the property line.
6. Prior to construction of sewer, Contractor is to expose existing sewer and contact Engineer for verification of existing elevation.
7. The sewer Contractor shall adjust manholes to final grades after paving is completed.
8. A plug shall be installed and will remain in place where the new sewer connects with the existing sewer until the new sewer is accepted by the City.
9. All flagged elevations shall be staked in the field by the private engineer.
10. The private engineer signing these plans is responsible for assuring the accuracy and acceptability of the work hereon. In the event of discrepancies arising during construction as a result of errors or omissions, the private engineer signing these plans shall be responsible for determining an acceptable solution and revising the plans for approval by the city.
11. Since high ground water is common in this area, the contractor shall place crushed rock bedding in all trenches per City of Riverside Standard Drawing No. 452.

CONSTRUCTION NOTES:

1. Construct manholes per city of Riverside Standard Drawing No. 500.
2. Construct cleanout per City of Riverside Standard Drawing No. 560.
3. Construct laterals per City of Riverside Standard Drawing No. 562.

NOTICE TO CONTRACTOR:

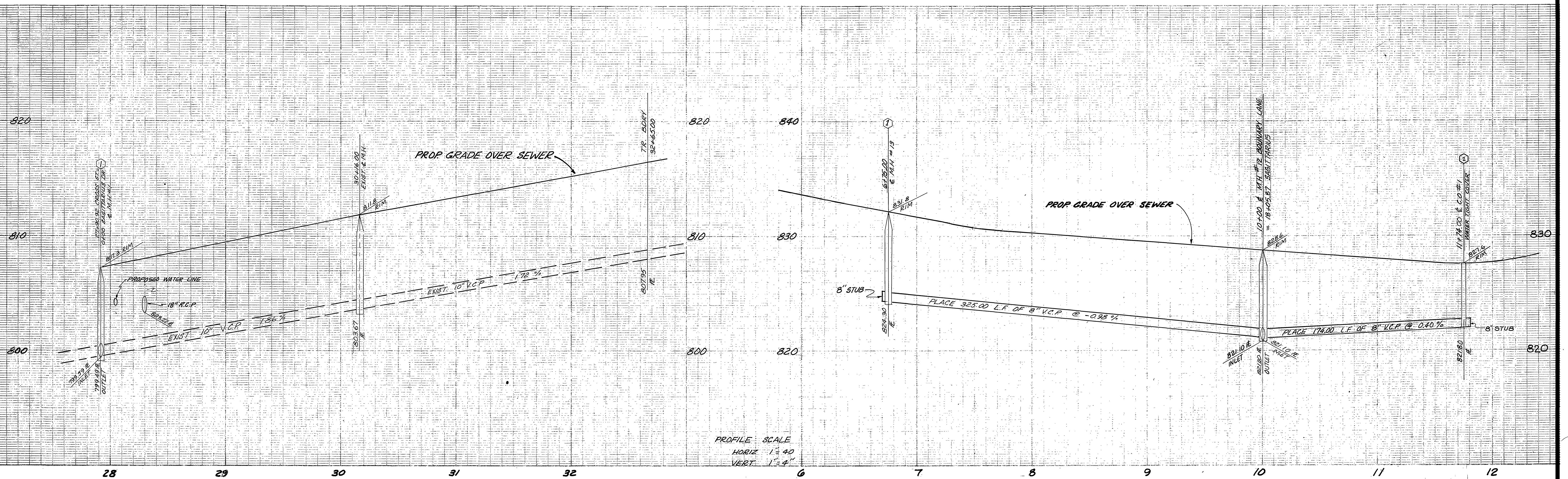
THE EXISTENCE AND LOCATION OF ANY UNDERGROUND UTILITY PIPES OR STRUCTURES SHOWN ON THESE PLANS ARE OBTAINED BY A SEARCH OF AVAILABLE RECORDS. TO THE BEST OF OUR KNOWLEDGE THERE ARE NO EXISTING UTILITIES EXCEPT AS SHOWN ON THESE PLANS. THE CONTRACTOR IS REQUIRED TO TAKE PRECAUTIONARY MEASURES TO PROTECT THE UTILITY LINES SHOWN AND OTHER LINES NOT OF RECORD OR NOT SHOWN ON THESE PLANS.

BENCH MARK:

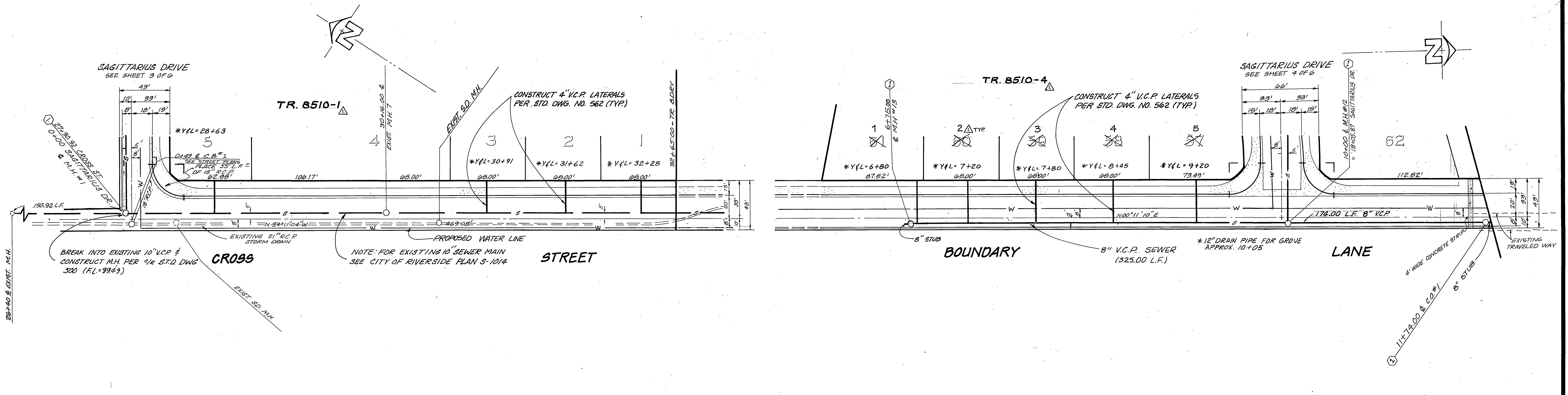
PK NAIL # TAG IN CULVERT HEADWALL ON NLY SIDE OF VICTORIA 30' WLY OF CROSS ST. - FB 739/64. ELEVATION = 829.204 FT.

\*As built 10-86 TG

PLANS CHECKED AND FOUND TO COMPLY WITH CITY OF RIVERSIDE REQUIREMENTS Approved by: <i>Max Sloan</i> R.E. 10334 11-8-79 BERRYMAN & STEPHENSON INC. date	SOUTHERN CALIFORNIA GAS CO. Approved by: <i>J. E. Carson</i> 9/19/79 date	CITY OF RIVERSIDE DOMESTIC WATER SYSTEM APPROVED BY: <i>James H. D. ...</i> 2/28/79 CHIEF UTILITIES ENGINEER, WATER DATE	J. F. DAVIDSON ASSOCIATES CIVIL ENGINEERS - SURVEYORS - PLANNERS RIVERSIDE, CALIFORNIA APPROVED BY: <i>John W. ...</i> DATE 7/27/79 R.E. No. 17550	CITY OF RIVERSIDE, CALIFORNIA DEPARTMENT OF PUBLIC WORKS APPROVED BY: <i>John C. ...</i> DATE 11/13/79 DIRECTOR OF PUBLIC WORKS	SEWER PLANS <b>TRACT NO. 8510-1-4</b> TITLE SHEET	PROJECT NO. <b>5-1219</b>
						SHEET <b>1</b> OF <b>6</b> HORIZ. SCALE: 1" = ... VERT. SCALE: 1" = ... FILE NO. 5570



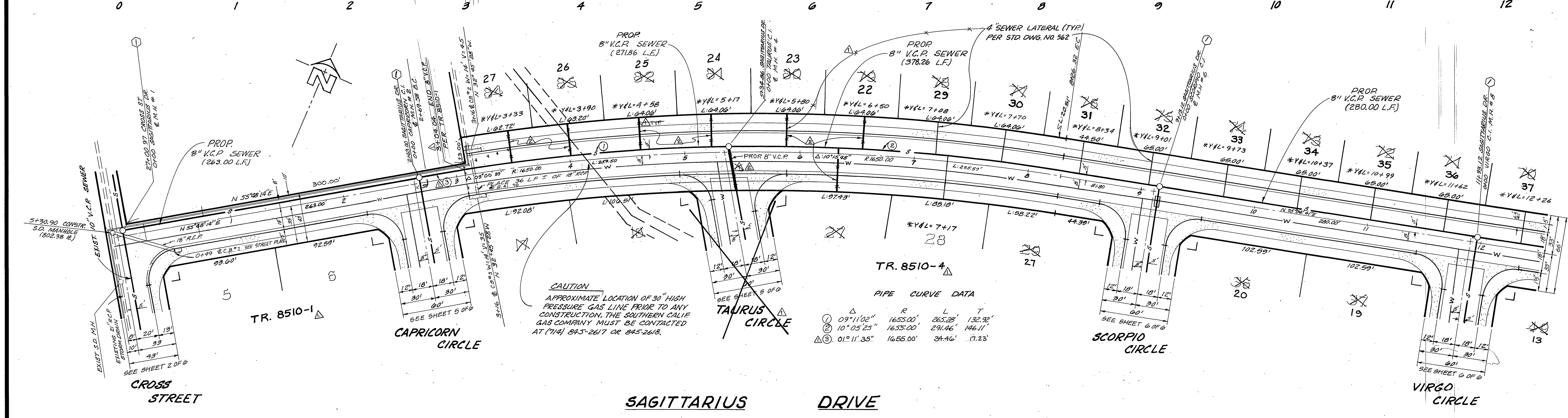
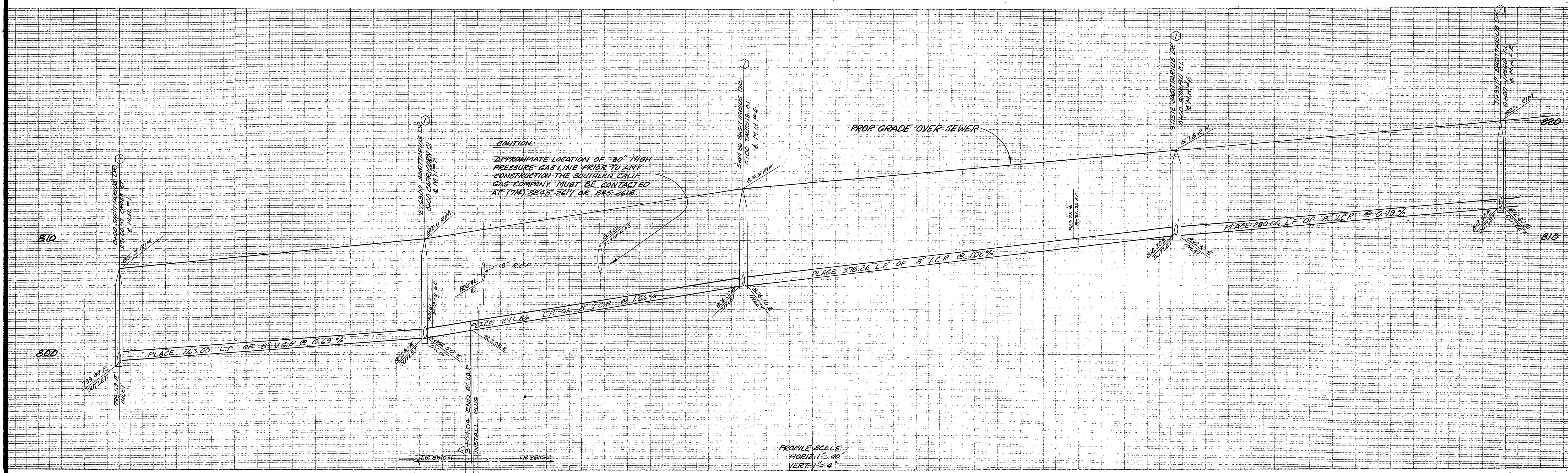
PROFILE SCALE  
 HORIZ 1" = 40'  
 VERT 1" = 4'



BENCH MARK:  
 PK NAIL & TAG IN CULVERT HEADWALL ON  
 NLY SIDE OF VICTORIA AVE. 50' WLY OF  
 CROSS ST. - F.B. 739/64. ELEV. = 829.204 FT.

\* As built 10-86 T&E

PLANS CHECKED AND FOUND TO COMPLY WITH CITY OF RIVERSIDE REQUIREMENTS Approved by: <i>Max Sloan</i> ECE 10354 11-8-79 BERRYMAN & STEPHENSON INC. date	SOUTHERN CALIFORNIA GAS CO. Approved by: <i>[Signature]</i> 9/19/79 date	CITY OF RIVERSIDE DOMESTIC WATER SYSTEM APPROVED BY: <i>[Signature]</i> 2/28/79 CHIEF UTILITIES ENGINEER, WATER DATE	J. F. DAVIDSON ASSOCIATES CIVIL ENGINEERS - SURVEYORS - PLANNERS RIVERSIDE, CALIFORNIA APPROVED BY: <i>[Signature]</i> DATE 9/21/79 R.E. No. 17550 W.O. 5159 FOR PACESETTER F.B.	CITY OF RIVERSIDE, CALIFORNIA DEPARTMENT OF PUBLIC WORKS APPROVED BY: <i>[Signature]</i> DATE 11/13/79 PRINCIPAL ENGINEER PARK DEPARTMENT TRAFFIC DIVISION CHIEF P. W. ENGR.	SEWER PLANS & PROFILE <b>TRACT 8510-1 &amp; 8510-4</b> CROSS STREET BOUNDARY LANE		PROJECT NO. <b>5-1219</b>
					INDEXED R.M.F.		SHEET <b>2</b> OF <b>6</b>



PIPE CURVE DATA

Station	R	L	T
① 09°11'02"	1653.00'	265.28'	132.92'
② 10°05'25"	1653.00'	291.46'	146.11'
③ 01°11'35"	1655.00'	34.46'	17.23'

**BENCH MARK:**  
 PK NAIL & TAG IN CULVERT HEADWALL ON NLY SIDE OF VICTORIA AVE. 50' W/LY OF CROSS ST. - FB 739/64. ELEVATION = 829.204 FT.

PLANS CHECKED AND FOUND TO COMPLY WITH CITY OF RIVERSIDE REQUIREMENTS  
 Approved by:  
 Max S. Lee PCE 10354 11-8-79  
 BERRYMAN & STEPHENSON INC. date

SOUTHERN CALIFORNIA GAS CO.  
 Approved by:  
 J. F. Davidson 2/10/79  
 date

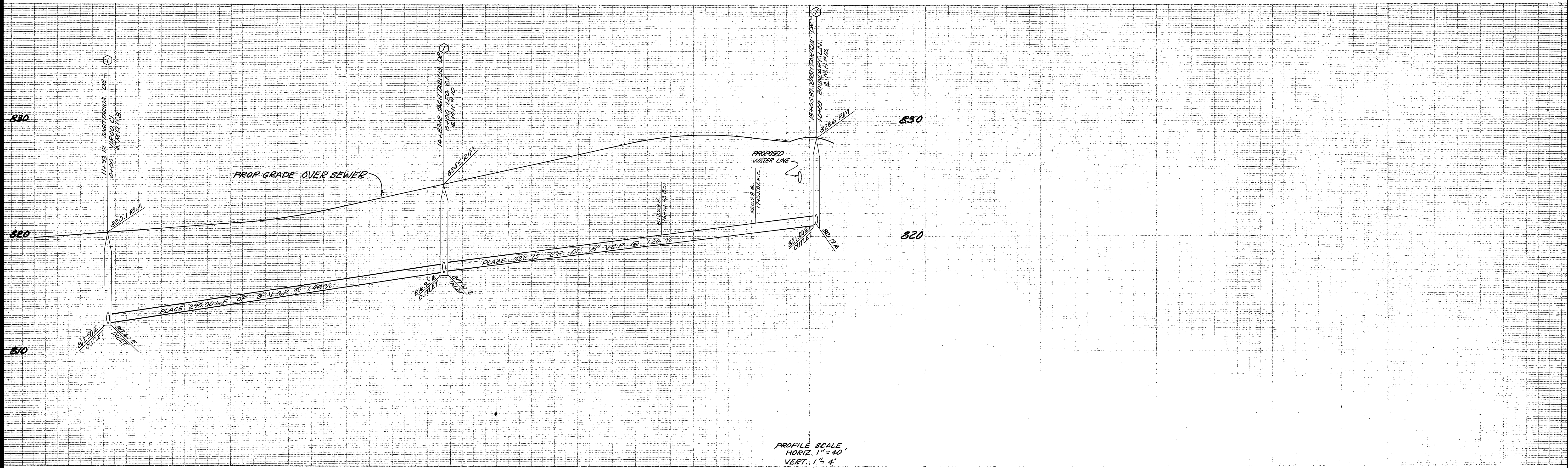
CITY OF RIVERSIDE  
 DOMESTIC WATER SYSTEM  
 APPROVED BY:  
 James A. Van Wagoner 2/12/79  
 CHIEF UTILITIES ENGINEER, WATER DATE

J. F. DAVIDSON ASSOCIATES  
 CIVIL ENGINEERS - SURVEYORS - PLANNERS  
 RIVERSIDE, CALIFORNIA  
 APPROVED BY: J. W. City DATE 2/27/79  
 R.E. No. 17550

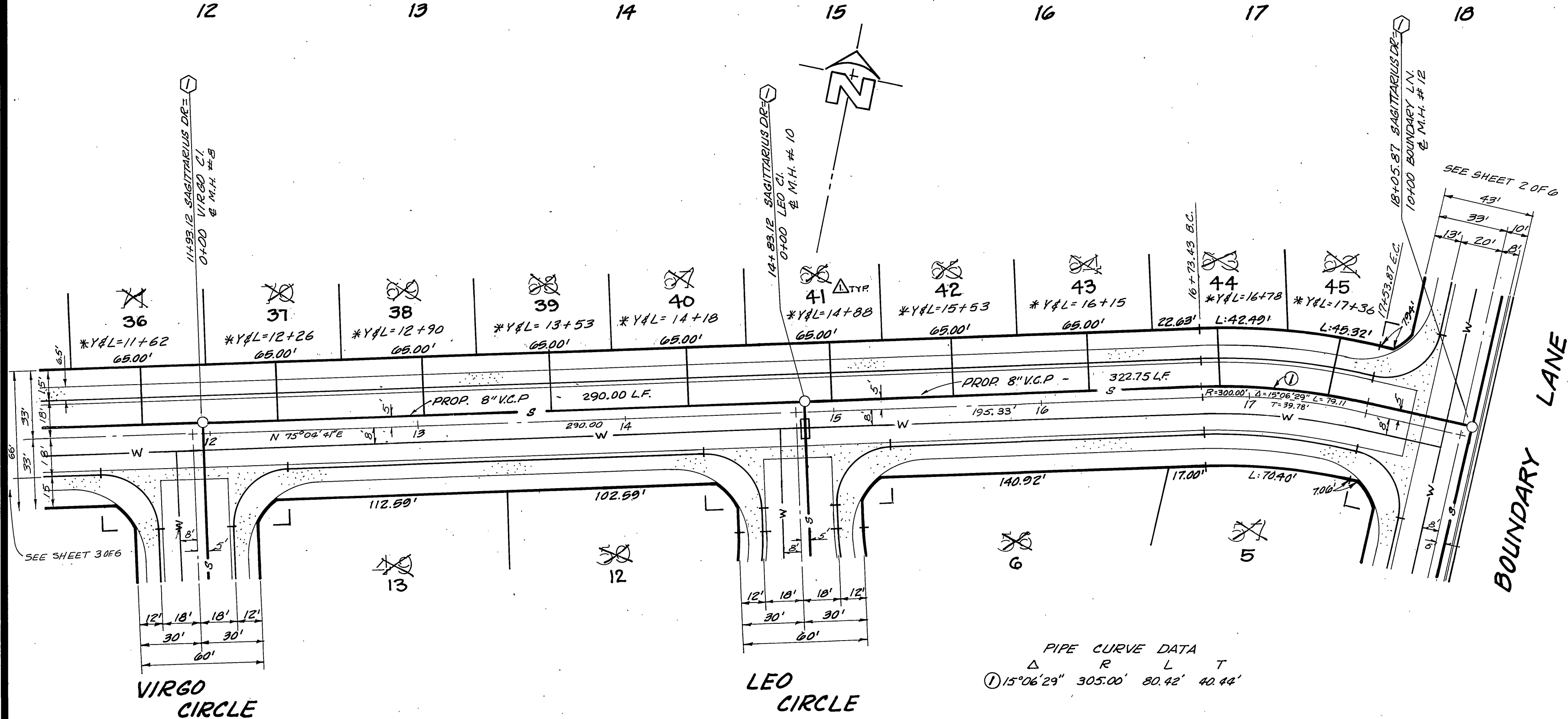
ADDED LATERALS (FUTURE LOTS)  
 W.M. 11-9-84  
 DESIGNER: S.R.H. DRAWN BY: C.M.F. CHECKED BY: S.R.H.

CITY OF RIVERSIDE, CALIFORNIA  
 DEPARTMENT OF PUBLIC WORKS  
 APPROVED BY: [Signature] DATE 11/13/79  
 DIRECTOR OF PUBLIC WORKS

SEWER PLANS & PROFILE  
 TRACT 8510-1 & 8510-4  
 SAGITTARIUS DRIVE  
 PROJECT NO. S-1219  
 SHEET 3 OF 6  
 HORIZ. SCALE: 1" = 40' VERT. SCALE: 1" = 4' FILE NO. 5570



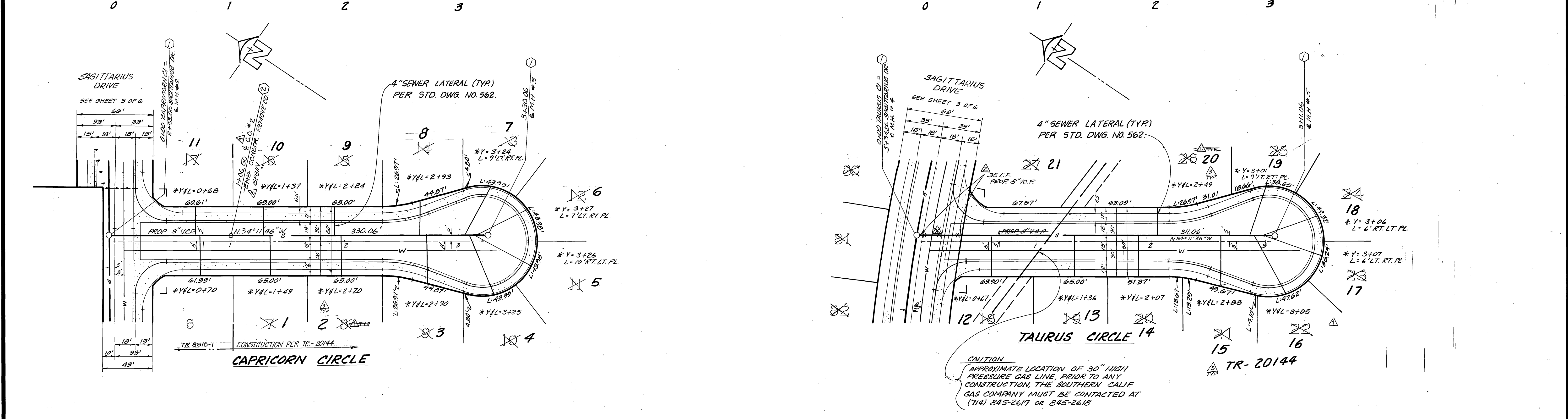
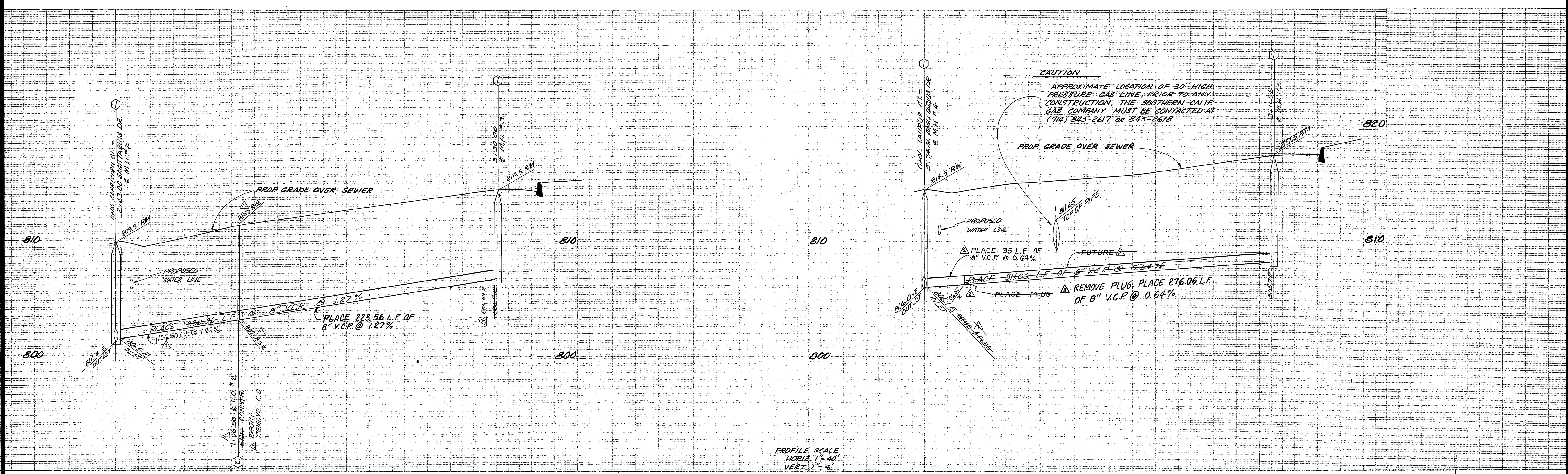
PROFILE SCALE,  
HORIZ. 1" = 40'  
VERT. 1" = 4'



**SAGITTARIUS DRIVE**

**BENCH MARK:**  
PK. NAIL & TAG IN CULVERT HEADWALL ON NLY SIDE OF VICTORIA AVE. 50' WLY OF CROSS ST. - F.B. 739/64.  
ELEVATION = 829.204 FT.

PLANS CHECKED AND FOUND TO COMPLY WITH CITY OF RIVERSIDE REQUIREMENTS Approved by: <i>Max Sloan</i> RCE 10354 11-8-77 BERRYMAN & STEPHENSON INC. date	<b>CITY OF RIVERSIDE</b> DOMESTIC WATER SYSTEM APPROVED BY: <i>James H. Van Wagner</i> 2/21/79 CHIEF UTILITIES ENGINEER, WATER DATE	<b>J. F. DAVIDSON ASSOCIATES</b> CIVIL ENGINEERS - SURVEYORS - PLANNERS RIVERSIDE, CALIFORNIA APPROVED BY: <i>J. F. Davidson</i> DATE 9/27/77 R.E. No. 17550 W.O. 5159 FOR: PACESETTER F.B.	<b>CITY OF RIVERSIDE, CALIFORNIA</b> DEPARTMENT OF PUBLIC WORKS		<b>SEWER PLANS &amp; PROFILE</b>	PROJECT NO. <b>S-1219</b>
			APPROVED BY: <i>[Signature]</i> DATE 11/12/79 CHIEF P. W. ENGR.	APPROVED BY: <i>[Signature]</i> DATE 11/12/79 DIRECTOR OF PUBLIC WORKS	TRACT NO. 8510-4 SAGITTARIUS DRIVE	SHEET 4 OF 6



**BENCH MARK:**  
 PK. NAIL & TAG IN CULVERT HEADWALL ON NLY SIDE OF VICTORIA AVE. 50' WLY OF CROSS ST. F.B. 739/64. ELEVATION = 829.204 FT.

PLANS CHECKED AND FOUND TO COMPLY WITH CITY OF RIVERSIDE REQUIREMENTS  
 Approved by: *[Signature]* 11-8-79  
 BERRYMAN & STEPHENSON INC. date

SOUTHERN CALIFORNIA GAS CO.  
 Approved by: *[Signature]* 9/19/79  
 date

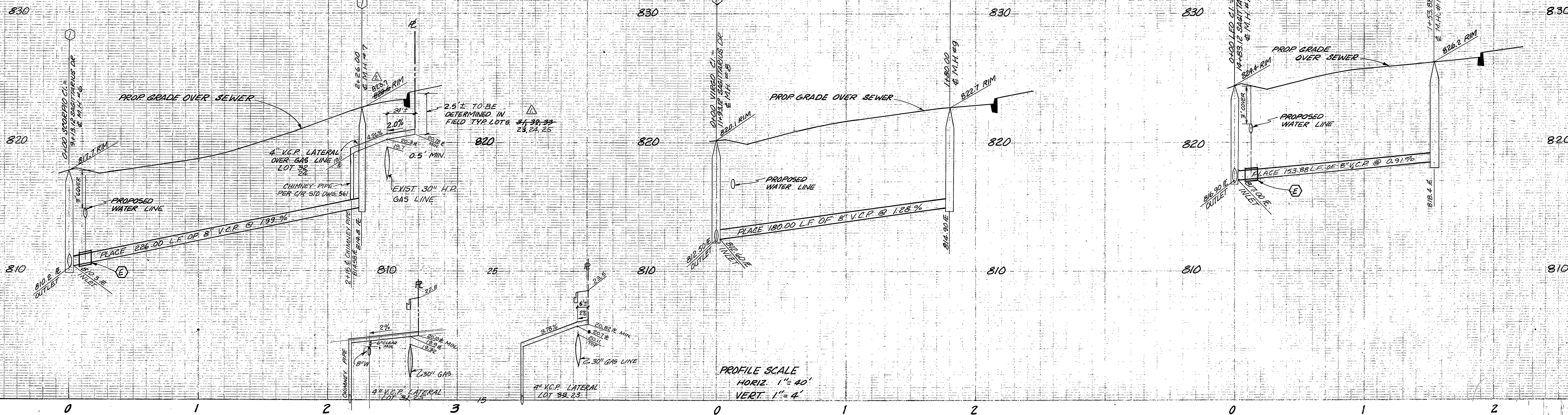
CITY OF RIVERSIDE  
 DOMESTIC WATER SYSTEM  
 APPROVED BY: *[Signature]* 2/29/79  
 CHIEF UTILITIES ENGINEER, WATER DATE

J. F. DAVIDSON ASSOCIATES  
 CIVIL ENGINEERS - SURVEYORS - PLANNERS  
 RIVERSIDE, CALIFORNIA  
 APPROVED BY: *[Signature]* DATE 2/21/77  
 R.E. No. 17550

MARK	REVISIONS	APPR.	DATE
CONSTRUCTION LIMITS & LOT NUMBERS FOR TR-20144	11/1/79		
ADDED 8" V.C.P. STUB PAST PAYMENT	11/1/79		
ADDED TYPICAL OF CONSTRUCTION FOR TR-20144	11/1/79		

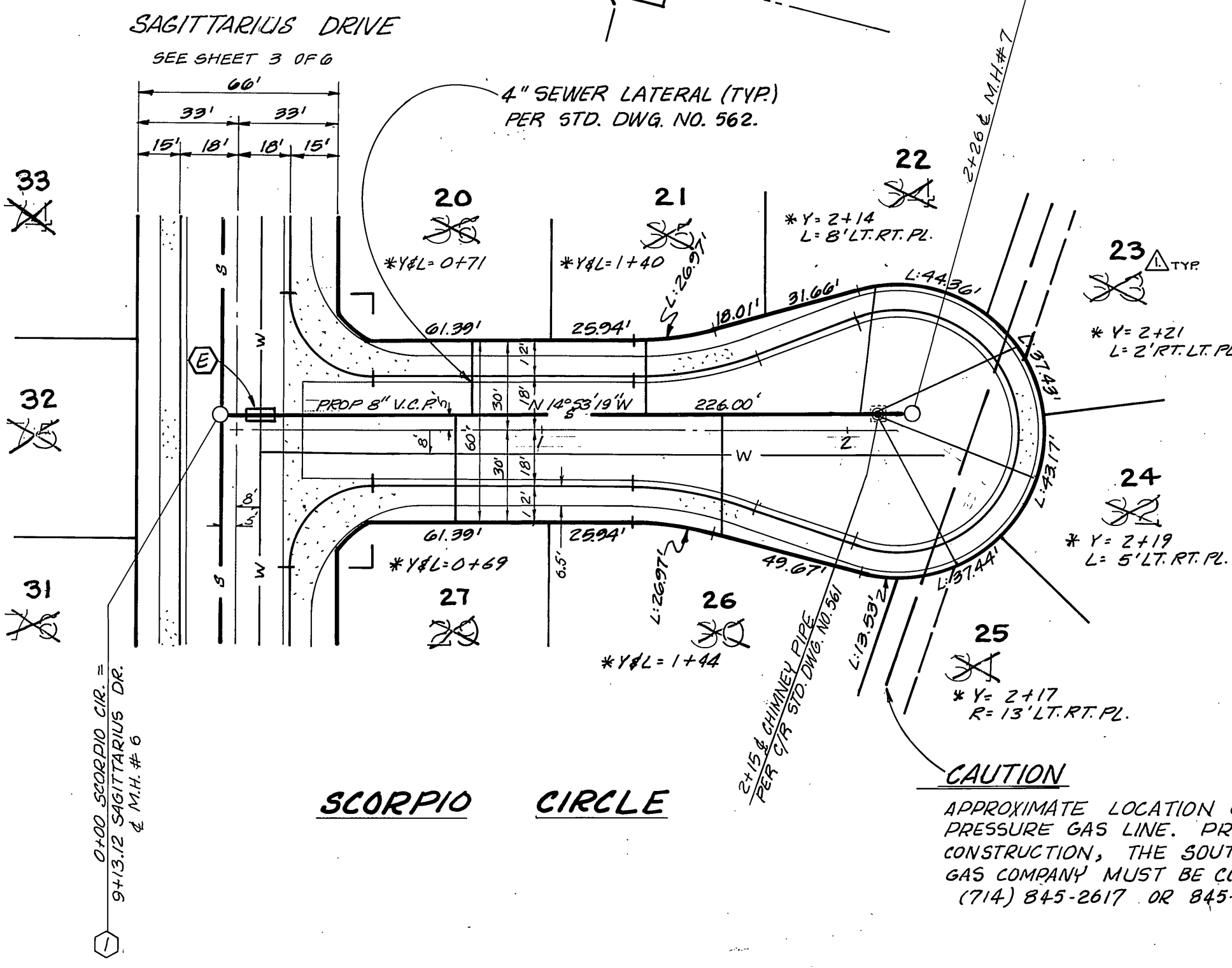
CITY OF RIVERSIDE, CALIFORNIA  
 DEPARTMENT OF PUBLIC WORKS  
 APPROVED BY: *[Signature]* DATE 11/1/79  
 TRAFFIC DIVISION  
 CHIEF P. W. ENGR.

SEWER PLANS & PROFILE  
**TRACT 8510-1&4**  
**CAPRICORN CIRCLE**  
**TAURUS CIRCLE**  
 PROJECT NO. **S-1219**  
 SHEET **5** OF **6**  
 HORIZ. SCALE: 1" = 40' VERT. SCALE: 1" = 4' FILE NO. 5570

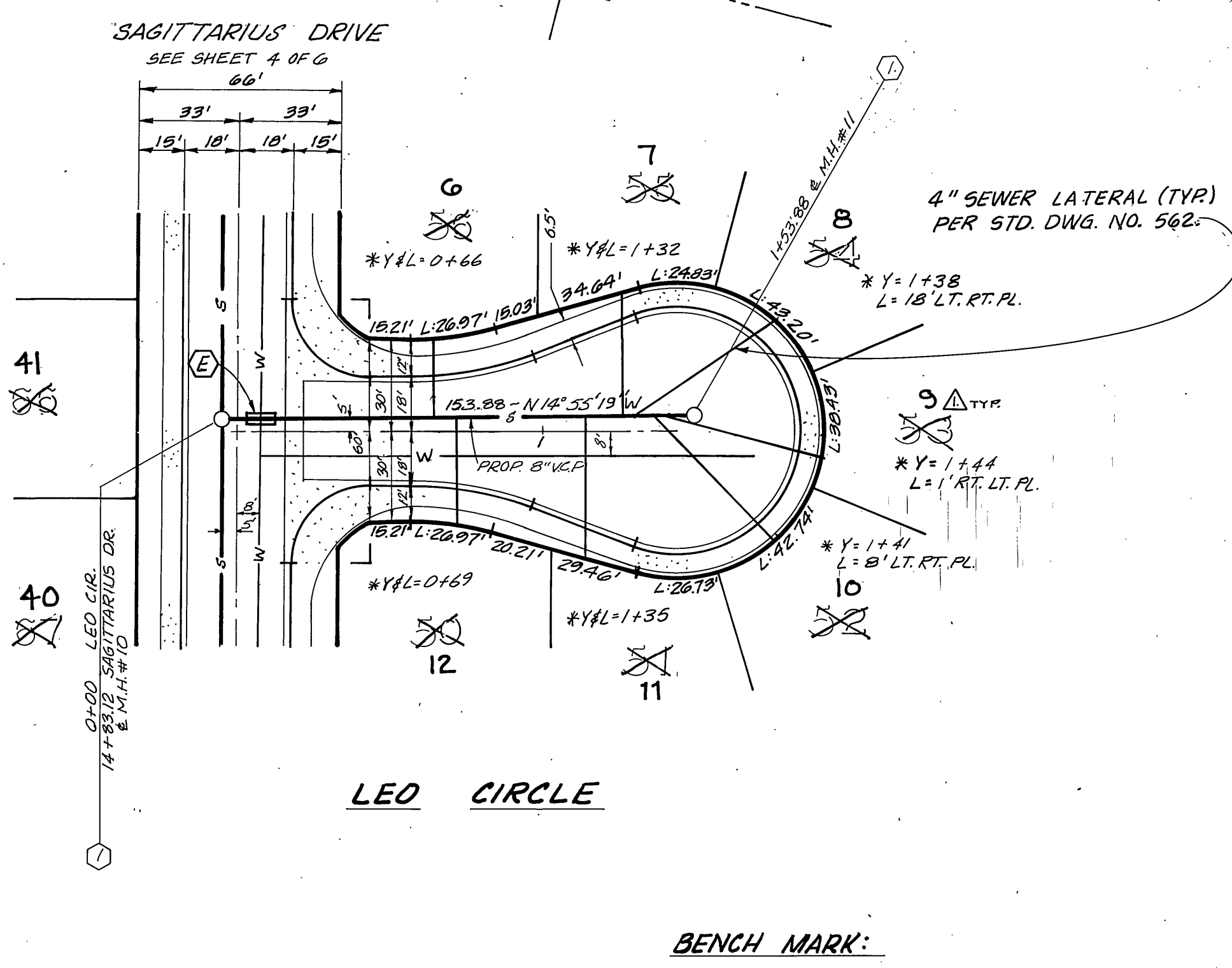
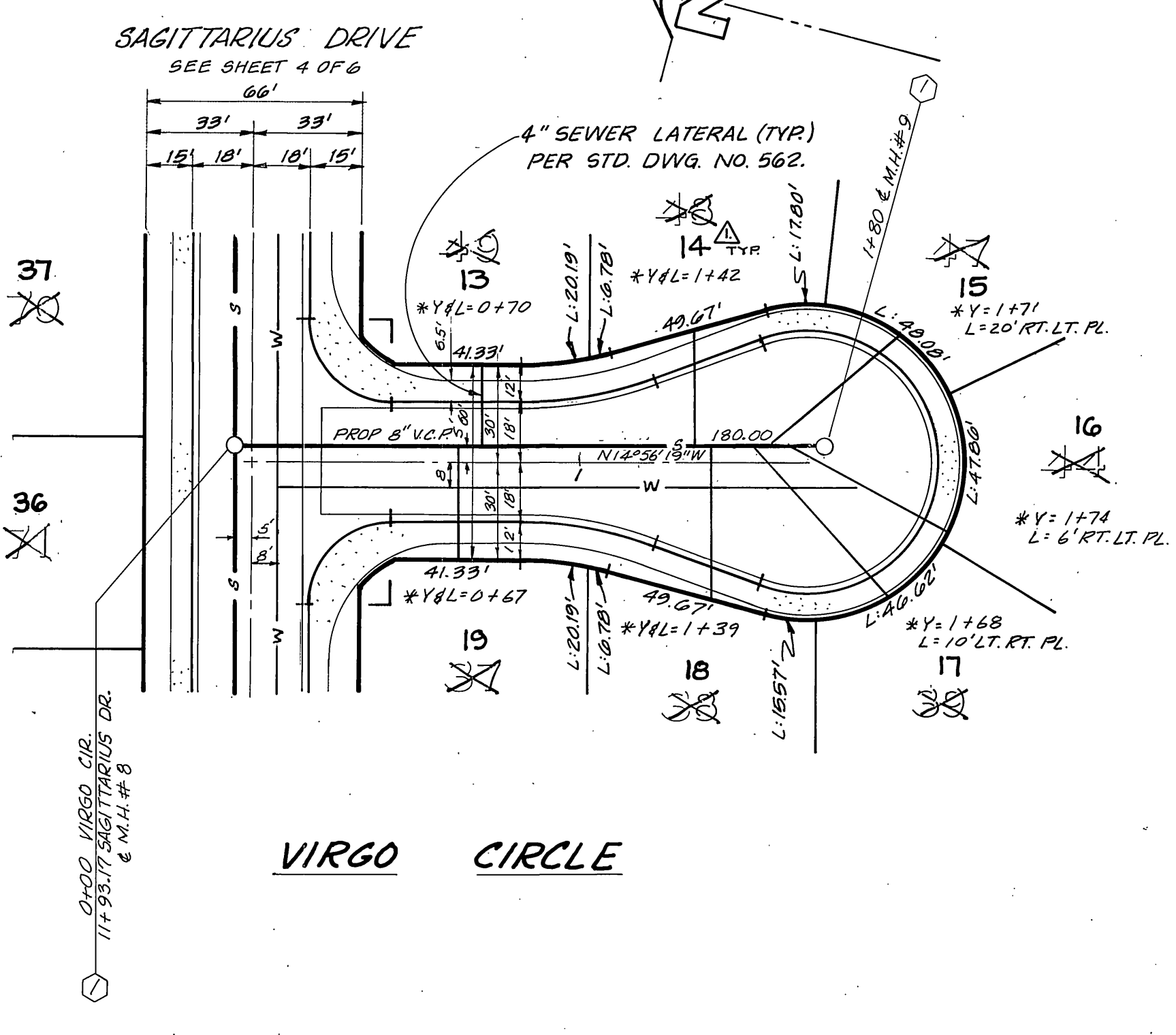


PROFILE SCALE  
 HORIZ. 1" = 40'  
 VERT. 1" = 4'

CONSTRUCTION NOTE:  
 (E) ENCASE SEWER 4.5' EACH SIDE OF WATERLINE WITH TYPE "C" CONCRETE ENCASEMENT AS PER STD. DWG. C.W.D.-023



CAUTION  
 APPROXIMATE LOCATION OF 30" HIGH PRESSURE GAS LINE. PRIOR TO ANY CONSTRUCTION, THE SOUTHERN CALIF. GAS COMPANY MUST BE CONTACTED AT (714) 845-2617 OR 845-2618.



BENCH MARK:  
 PK. NAIL & TAG IN CULVERT HEADWALL ON N'LY SIDE OF VICTORIA AVE. 50' W'LY OF CROSS ST. - F.B. 739/64. ELEVATION = 829.204 FT.

PLANS CHECKED AND FOUND TO COMPLY WITH CITY OF RIVERSIDE REQUIREMENTS  
 Approved by: *Max Stan* PCE 10352 11-8-79  
 BERRYMAN & STEPHENSON, INC. date

SOUTHERN CALIFORNIA GAS CO.  
 Approved by: *John Johnson* 9/19/79  
 date

CITY OF RIVERSIDE  
 DOMESTIC WATER SYSTEM  
 APPROVED BY: *Fred Lawt* 11/9/79  
 CHIEF UTILITIES ENGINEER, WATER DATE

J. F. DAVIDSON ASSOCIATES  
 CIVIL ENGINEERS - SURVEYORS - PLANNERS  
 RIVERSIDE, CALIFORNIA  
 APPROVED BY: *J. F. Davidson* DATE 9/21/79  
 R.E. No. 17550

REVISIONS  
 MARK REVISIONS APPR. DATE  
 DESIGNED BY *BRH* DRAWN BY *C.M.E.* CHECKED BY *BRH*

CITY OF RIVERSIDE, CALIFORNIA  
 DEPARTMENT OF PUBLIC WORKS  
 APPROVED BY: *John W. ...* DATE 11/13/79  
 DIRECTOR OF PUBLIC WORKS

SEWER PLANS & PROFILE  
 TRACT NO. 8510-4  
 SCORPIO CIRCLE, LEO CIRCLE AND VIRGO CIRCLE

PROJECT NO. S-1219  
 SHEET 6 OF 6  
 FILE NO. 5570