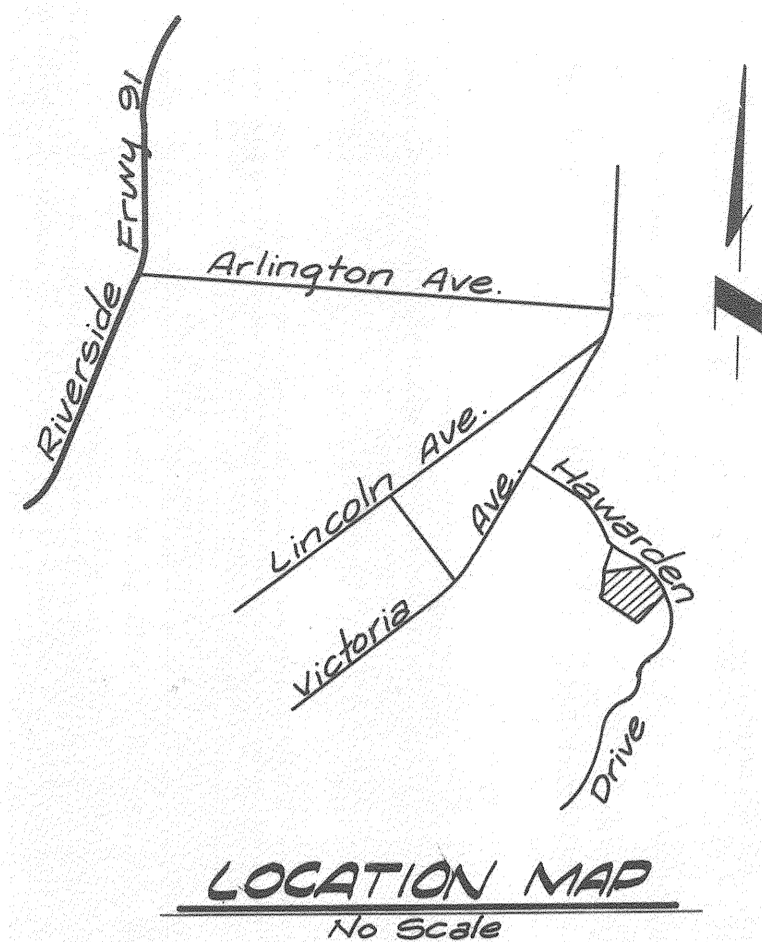


GENERAL NOTES

1. The private engineer signing these plans is responsible for the accuracy and acceptability of the work hereon. In the event of discrepancies arising during construction, the private engineer signing these plans shall be responsible for determining an acceptable solution and revising the plans for approval by the City.
2. Construction shall be in accordance with the Standard Specifications for Public Works Construction 1979 Edition and per City of Riverside Standard Drawings.
3. It shall be the responsibility of the Contractor to clear the Right of Way in accordance with the provisions of law as it affects each utility including irrigation lines and appurtenances and at no cost to the City.
4. Pipe shall be bedded per case I, Standard Drawing No. 452, unless otherwise specified on the plans.
5. Location of Wye's, Laterals and Saddles to be determined in the field at the direction of the owner.
6. All stubs and laterals to be constructed in accordance with Standard Drawing No. 562. Stubs shall be plugged and capped.
7. Manhole frames and covers to be set as noted in profile by Sewer Contractor after final paving of streets.
8. Laterals are to be 4" V.C.P. and extended to property line.
9. Prior to construction of the sewer. The Contractor is to expose the existing sewer and contact the Engineer for verification of existing location and elevation.
10. Plugs shall be installed and will remain in place where the new sewer connects with the existing sewer until such time as the new sewer is accepted by the City.



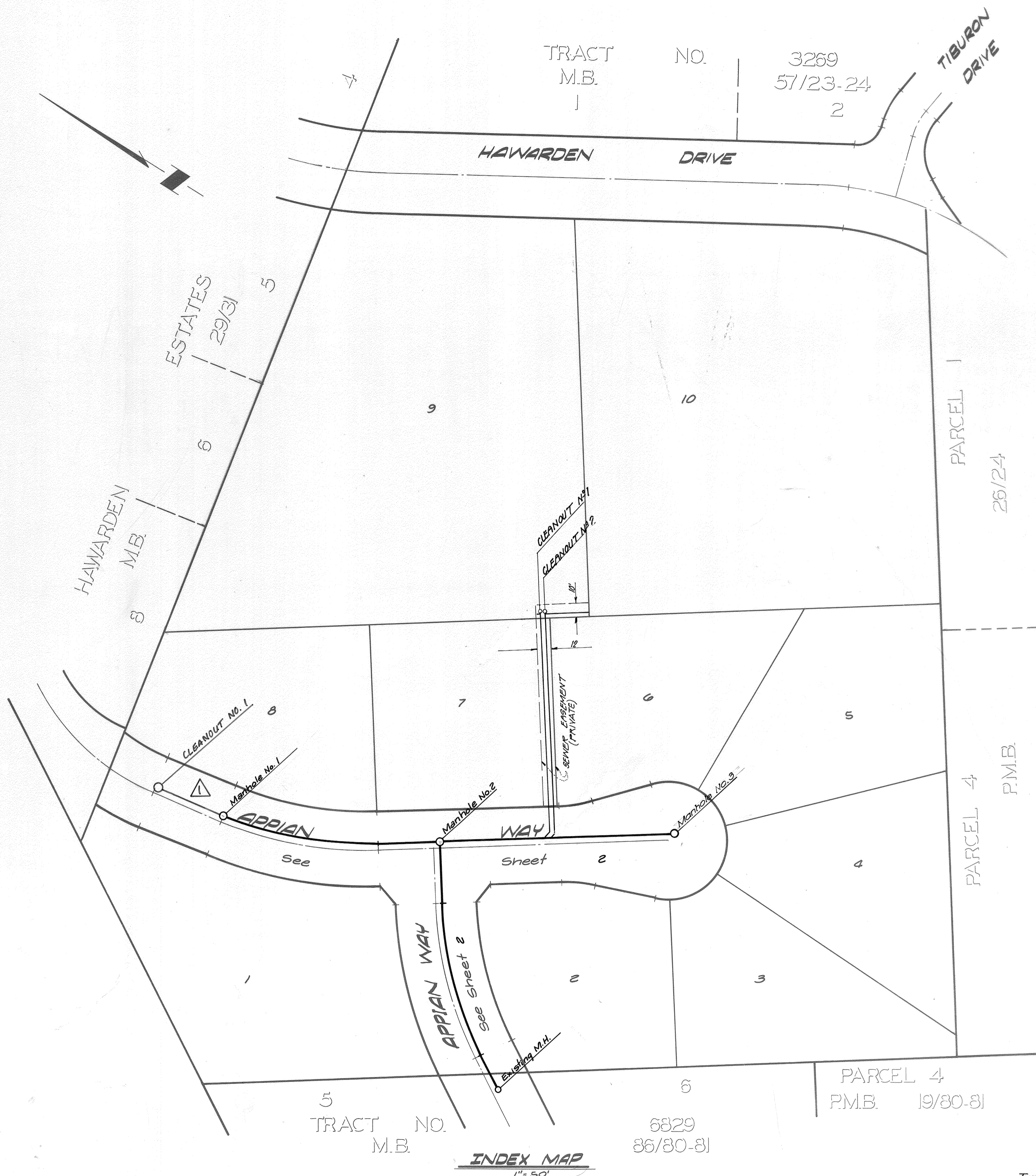
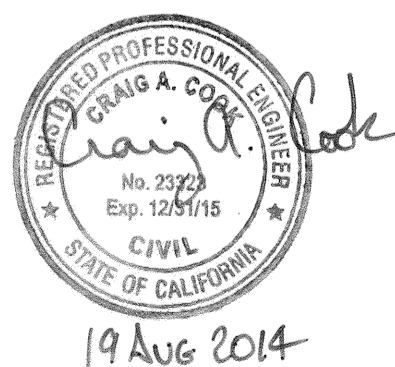
CONSTRUCTION NOTES

1. Construct 4" V.C.P Lateral to property line.
2. Construct 8" V.C.P Sewer Line.
3. Construct Manhole per City Standard No. 500.
4. Construct Cleanout per City Standard No. 560.
5. CONSTRUCT SEWER LATERAL WITH PL CLEANOUT PER CITY STANDARD NO. 562.
6. CONSTRUCT 8" PVC SEWER LINE.

NOTICE TO CONTRACTOR

The existence and location of underground utility pipes or structures shown on these plans are obtained by a search of the available records. To the best of our knowledge there are no existing utilities except as shown on these plans. The Contractor is required to take due precautionary measures to protect the utility lines shown and any other lines not of record or not shown on these plans.

PW 13-0317
ALL REVISIONS MARKED AS PREPARED UNDER THE DIRECTION OF:
GABEL, COOK AND ASSOCIATES, INC.
7177 BROCKTON AVE, # 399
RIVERSIDE, CA 92506
(951) 788-8092
BUS. TAX ID 012144 EXP. 12-31-2014
ENGINEER: CRAIG A. COOK, R.C.E. 23323



PLANS CHECKED AND FOUND TO COMPLY WITH CITY OF RIVERSIDE REQUIREMENTS.

BY *Paul S. Schuster* 11/2/99
C & G ENGINEERING DATE

CITY OF RIVERSIDE
DOMESTIC SYSTEM

Paul S. Schuster 11/1/79
Chief Utilities Engineer - Water Date

L. A. WAINSCOTT & ASSOCIATES

CIVIL ENGINEERS
GRAND TERRACE, CALIFORNIA
(714) 824-1775

APPROVED BY *L.A. Waincott* DATE 1-5-78
R.C.E. 16056

W.O. 02106 FOR R&L Development Co. F.B. 1

EXTENSION OF SEWER LINE ADD CLEANOUT AND SEWER LATERAL WITH CLEANOUT.

MARK REVISIONS APPR. DATE

BENCH MARK:

Pk. nail and tag in culvert headwall @ wily corner of Victoria Ave. and Anna St. B.M. # 66-G F.B. 838/60
Elevation = 960.565

DESIGNED BY PH. DRAWN BY PH. JR. CHECKED BY

CITY OF RIVERSIDE, CALIFORNIA
DEPARTMENT OF PUBLIC WORKS

APPROVED BY *[Signature]* DATE 2/22/80
OFFICE ENGINEER
PARK DEPARTMENT
TRAFFIC DIVISION
ASSISTANT CITY ENG.

SEWER PLAN AND PROFILE

TRACT No. 10772
INDEX MAP

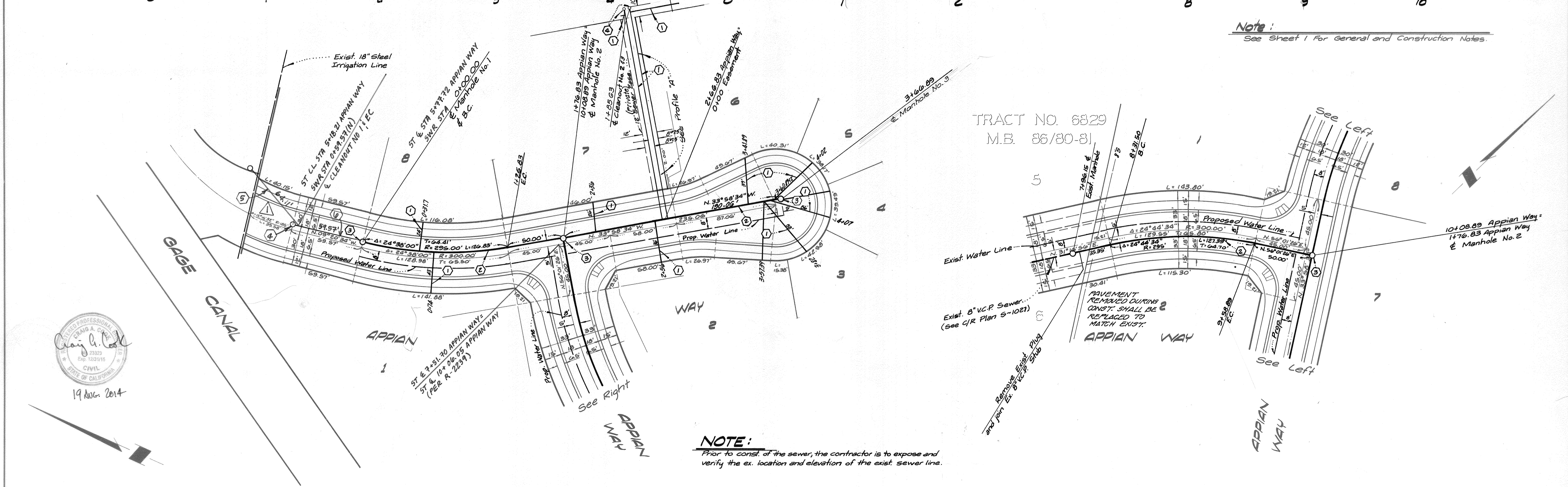
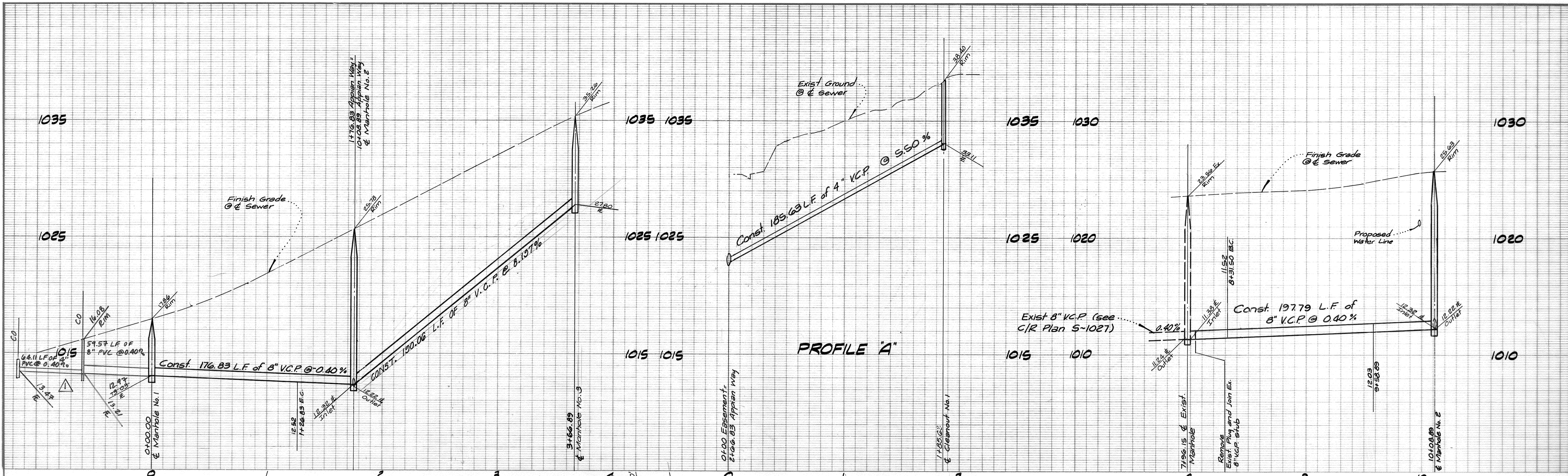
SCALE: AS SHOWN

S-1223

SHT. 1 OF 2

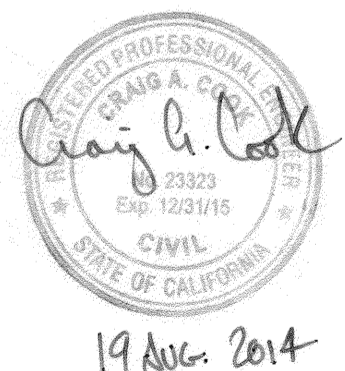
W.O. 02106-B

Indexed RKE



Note:
See Sheet 1 For General and Construction Notes.

NOTE:
Prior to const. of the sewer, the contractor is to expose and verify the ex. location and elevation of the exist. sewer line.



PLANS CHECKED AND FOUND TO COMPLY WITH CITY OF RIVERSIDE REQUIREMENTS.

BY Fred Sant 11/17/14
C G ENGINEERING DATE

CITY OF RIVERSIDE
DOMESTIC SYSTEM

Fred Sant Chief Utilities Engineer - Water
11/17/14

L A WAINSCOTT & ASSOCIATES
CIVIL ENGINEERS
GRAND TERRACE, CALIFORNIA
(714) 824-1775

APPROVED BY L.A. Waincott DATE 1-5-78
R.C.E. 16086

W.O. 021.05 FOR R&L Development Co. F.B.

MARK	REVISIONS	APPR.	DATE
▲	EXTENSION OF SEWER LINE, ADD CLEANOUT AND SEWER LATERAL WITH CLEANOUT.	RJK	8/26/14

BENCH MARK:
P.K. nail and tag in culvert headwall @ W. corner of Victoria Ave. and Anna St. B.M. # 60-6 FB 838/60
Elevation = 960.505

CITY OF RIVERSIDE, CALIFORNIA
DEPARTMENT OF PUBLIC WORKS

APPROVED BY	BY	DATE	APPROVED BY
OFFICE ENGINEER			
PARK DEPARTMENT			
TRAFFIC DIVISION			
ASSISTANT CITY ENG.			

DATE 2/22/80

SEWER PLAN AND PROFILE
TRACT No. 10772
APPIAN WAY

SCALE: HORIZ. 1"=40' VERT. 1"=4'

S-1223
SHT. 2 OF 2
W.D. 021.05-B

Indexed RKE