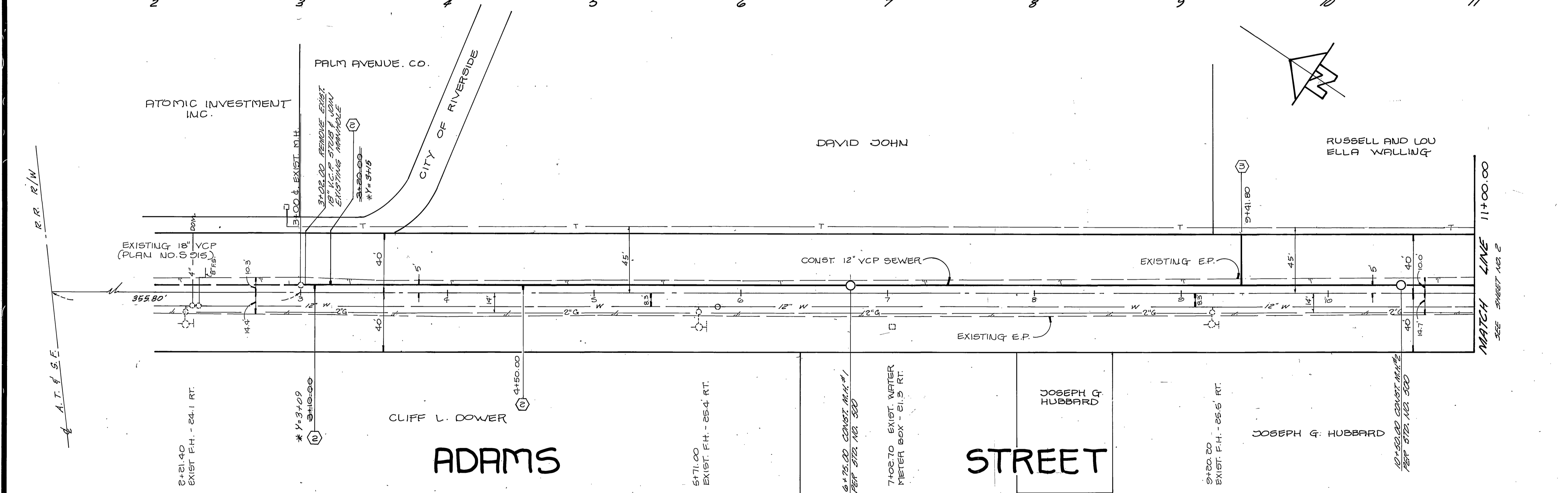


PROFILE SCALE
 HORIZ. 1"=40'
 VERT. 1"=4'



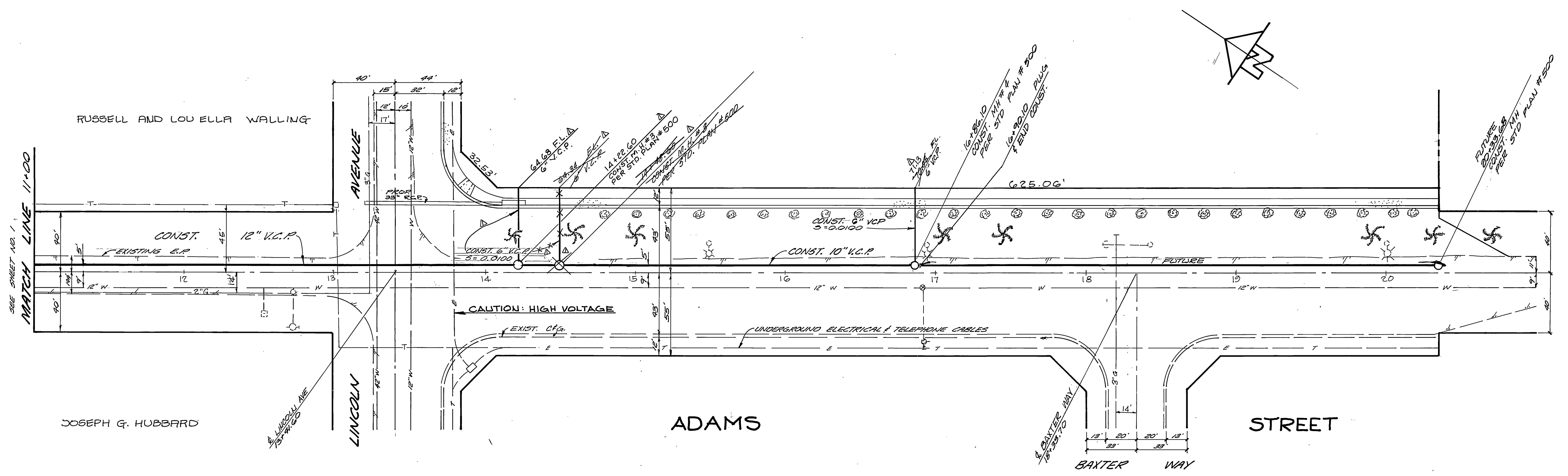
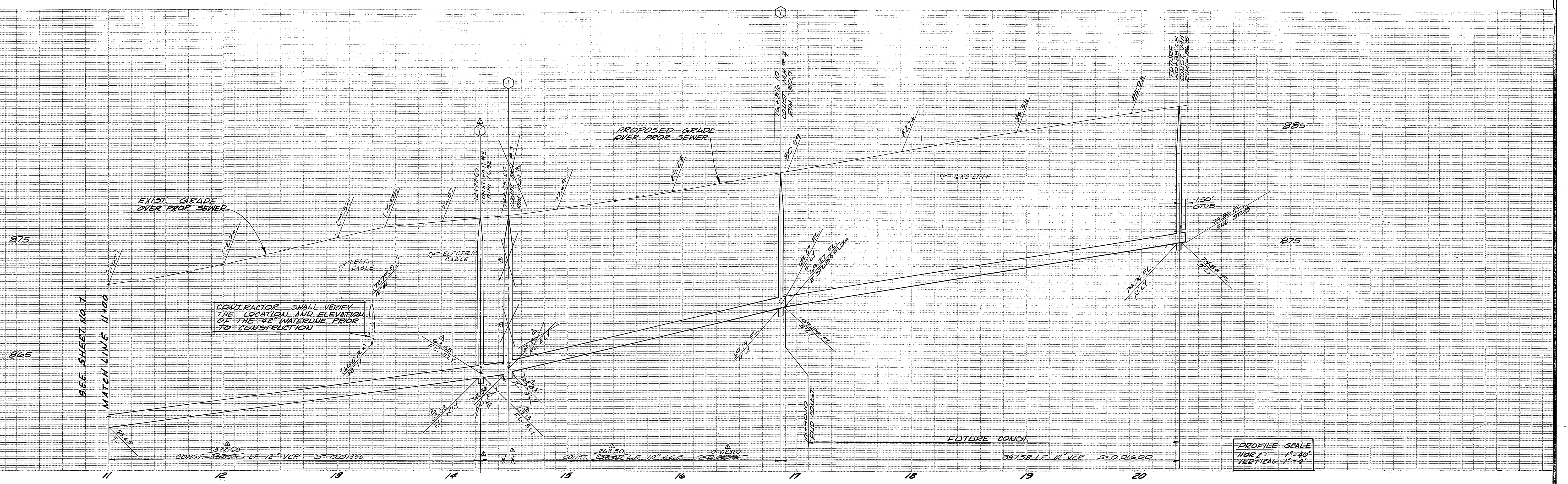
- GENERAL NOTES**
- CONSTRUCTION SHALL BE IN ACCORDANCE WITH THE CITY OF RIVERSIDE, DEPARTMENT OF PUBLIC WORKS, STANDARD DRAWINGS, AND THE STANDARD SPECIFICATIONS FOR PUBLIC WORKS CONSTRUCTION, 1988 EDITION.
 - IT SHALL BE THE RESPONSIBILITY OF THE CONTRACTOR TO CLEAR THE RIGHT OF WAY IN ACCORDANCE WITH THE PROVISIONS OF LAW AS IT AFFECTS EACH UTILITY INCLUDING IRRIGATION LINES AND APPURTENANCES AND AT NO COST TO THE CITY.
 - CONTRACTOR IS TO VERIFY EXISTING SEWER ELEVATION PRIOR TO CONSTRUCTION.
 - THE SEWER CONTRACTOR SHALL ADJUST MANHOLES TO FINAL GRADE AFTER PAVING IS COMPLETED.
 - ALL STARTINGS ON SEWER CENTERLINE.
 - NO FINISHED FLOOR ELEVATION SHALL BE LESS THAN 4' ABOVE THE SEWER FLOW LINE AT POINT OF CONNECTION WITHOUT HAVING A PROPER BACKWATER VALVE INSTALLED IN THE LATERAL.
 - BACKFILL AND RESURFACING SHALL BE IN ACCORDANCE WITH CITY OF RIVERSIDE STD. DWG. NO. 453.
 - PIPE SHALL BE BEDDED PER CASE 1, CITY OF RIVERSIDE STD. DWG. NO. 452.
 - ANY TRAFFIC CONTROL STRIPING OBLITERATED AND/OR BADLY WORN DURING CONSTRUCTION SHALL BE RESTORED BY THE CONTRACTOR WITHIN FIVE DAYS AFTER NOTIFICATION FROM THE CITY INSPECTORS.
 - ALL STARTINGS ON SEWER CENTERLINE.
 - A BENCH MARK SHALL BE INSTALLED AND WILL REMAIN IN PLACE UNTIL THE NEW SEWER IS ACCEPTED BY THE CITY.
 - THE PRIVATE ENGINEER PREPARING THESE PLANS SHALL BE RESPONSIBLE FOR PRESERVING OR RE-ESTABLISHING AND REFERENCING SURVEY MONUMENTS DESTROYED, DISTURBED OR BURIED AS A RESULT OF CONSTRUCTION SHOWN HEREON.

- CONSTRUCTION NOTES**
- CONSTRUCT MANHOLE PER CITY OF RIVERSIDE STD. DWG 500.
 - CONSTRUCT 4" SERVICE WYE AND PLUG PER CITY OF RIVERSIDE STD. DWG. 562.
 - CONSTRUCT 6" SEWER LATERAL PER CITY OF RIVERSIDE STD. DWG 562 (PIPE TO BE INSTALLED AT 1%)

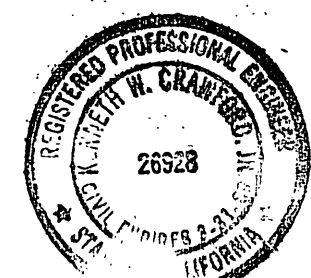
NOTICE TO CONTRACTOR
 THE EXISTENCE AND LOCATION OF ANY UNDERGROUND UTILITY LINES OR STRUCTURES SHOWN ON THIS PLAN ARE BASED UPON A SEARCH OF THE AVAILABLE RECORDS TO THE BEST OF OUR KNOWLEDGE THERE ARE NO EXISTING UTILITIES EXCEPT AS SHOWN ON THESE PLANS. THE CONTRACTOR IS REQUIRED TO TAKE DUE PRECAUTIONARY MEASURES TO PROTECT THE UTILITY LINES SHOWN AND ANY OTHER LINES NOT OF RECORD OR NOT SHOWN ON THIS PLAN.

THE PRIVATE ENGINEER SIGNING THESE PLANS IS RESPONSIBLE FOR THE ACCURACY AND ACCEPTABILITY FOR THE WORK HEREON. IN THE EVENT OF DISCREPANCIES ARISING DURING CONSTRUCTION, THE PRIVATE ENGINEER SIGNING THESE PLANS SHALL BE RESPONSIBLE FOR DETERMINING AN ACCEPTABLE SOLUTION AND REVISING THE PLANS FOR APPROVAL BY THE CITY.
BENCH MARK F5-F
 SET PK NAIL AND CITY ENGINEER TAG IN CONC. CURB ADJACENT TO THE S'LY SIDE OF A DIRT DRIVEWAY ON THE W'LY SIDE OF ADAMS ST. 150' N'LY OF VICTORIA AVE. P.B. 739/79 ELEV. 896.317

SOUTHERN CAL. GAS CO. APPROVED BY: <i>[Signature]</i> 1/19/79 DATE: 1/19/79		CITY OF RIVERSIDE PUBLIC UTILITIES DEPT. ELECTRICAL DIVISION APPROVED BY: <i>[Signature]</i> 10-5-79 DATE: 10-5-79 CHIEF UTILITIES ENGINEER, ELECTRICAL-DIVISION		CITY OF RIVERSIDE PUBLIC UTILITIES DEPT. WATER DIVISION APPROVED BY: <i>[Signature]</i> 11/4/79 DATE: 11/4/79 CHIEF UTILITIES ENGINEER, WATER - DIVISION		HAWKINS, ROBERTSON & ASSOC. ENGINEERS & SURVEYORS RIVERSIDE CALIFORNIA <i>[Signature]</i> 7/19/79 DATE: 7/19/79 R.C.E. 16012		CITY OF RIVERSIDE PUBLIC WORKS DEPARTMENT APPROVED BY: <i>[Signature]</i> 1/16/80 DATE: 1/16/80 PRINCIPAL ENGINEER PARK DEPARTMENT TRAFFIC DIVISION CHIEF P.W. ENGINEER		SEWER PLAN & PROFILE ADAMS STREET FROM 1038' N/O LINCOLN AVE. SOUTHERLY DRAWING CASE MP-13-782 HORIZ. SCALE: 1"=40' VERT. SCALE: 1"=4' ACCOUNT NO. 5-1224 SHEET 1 OF 2 79-320	
---	--	---	--	---	--	---	--	---	--	---	--



-CAUTION- PACIFIC TELEPHONE CABLES UNDERGROUND BEFORE EXCAVATING.
 CALL COLLECT:
 7:30 A.M. to 5 P.M. & Holidays
 Orange County 714-633-0811 714-547-6606
 Riverside County 714-684-0071 714-547-6606
 Inyo County 714-684-0071 714-547-6606
 San Bernardino County 714-684-0071 714-547-6606
 Los Angeles County 213-621-3111
 Ventura County 213-621-3111
 San Diego County 714-298-0595 714-233-0037
24 HOUR SERVICE
 FOR FREE CABLE LOCATING SERVICE

18'-52.4" @ 30.0%
 EXIST. WATER METER BOX
 12'-7" @ 25.8%
 EXIST. F.I.

 KENNETH W. CRAWFORD JR. R.C.E. 26928 EXP. 3-31-89 DATE 3-25-89

HAWKINS, ROBERTSON ASSOC.
 ENGINEERS SURVEYORS
 RIVERSIDE CALIFORNIA
 APPROVED BY:
Fred Rant 11/4/79 DATE
 CHIEF UTILITIES ENGR., WATER
 RFP: ALBANO, NOBLE & WILLIAMS

DESIGNED BY: L.S. DRAWN BY: R.L.R. CHECKED BY: L.S.
 MARK REVISIONS
 REVISIONS
 APPR. DATE
 REVISIONS
 APPR. DATE

CITY OF RIVERSIDE
 PUBLIC WORKS DEPARTMENT
 APPROVED BY: *Robert J. Miller* DATE 1/16/80
 PUBLIC WORKS DIRECTOR
 CHIEF P.W. ENGINEER
 DATE 1/16/80

BENCH MARK F.S.F.
 SET PK NAIL AND CITY ENGINEER TAG IN CONC. CURB ADJACENT TO THE S'LY SIDE OF A DIRT DRIVEWAY ON THE W'LY SIDE OF ADAMS ST. 150'± N'LY OF VICTORIA AVE. F.B. 139/19 ELEV. 896.317
SEWER PLAN & PROFILE
ADAMS STREET
 FROM 1038' 1/2 LINCOLN AVE. SOUTHERLY 1730'
 ZONING CASE # MP-13-789
 HORIZ. SCALE: 1" = 40' VERT. SCALE: 1" = 4'
 ACCOUNT NO. **S-1224**
 SHEET **2** OF **2**
 79-3000