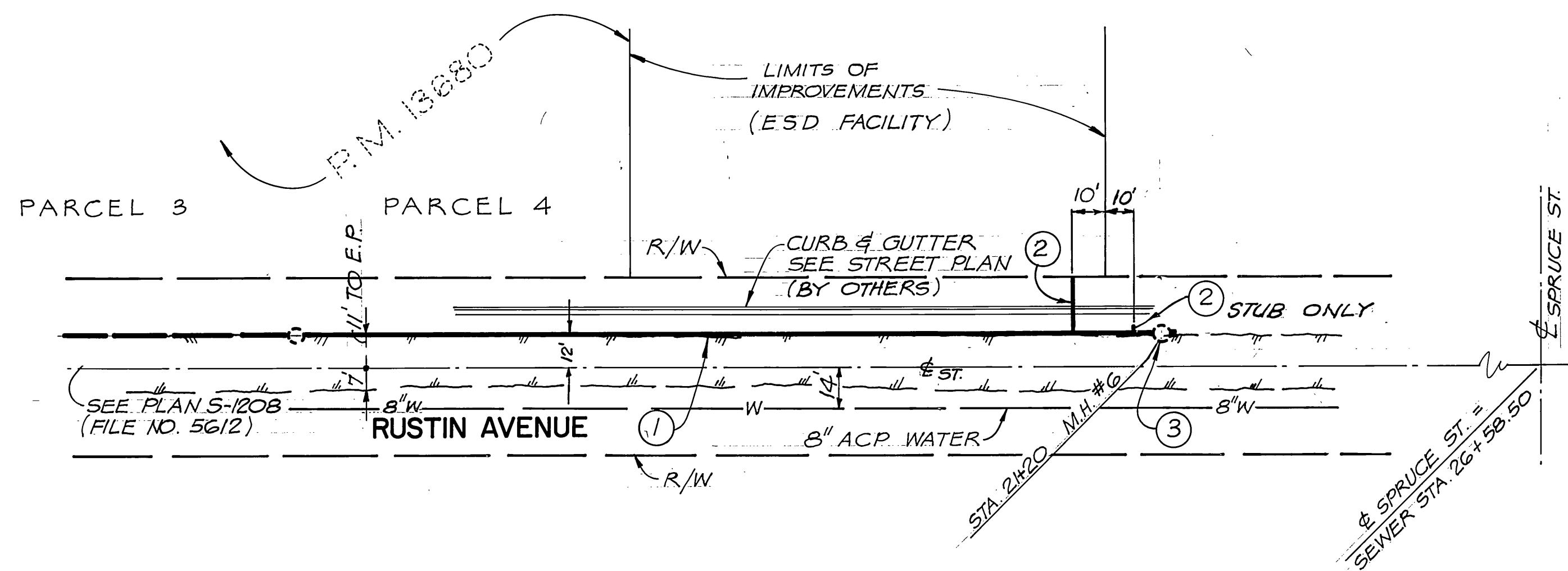


PROFILE

SCALE: HORIZ. 1" = 40'
VERT. 1" = 4'



GENERAL NOTES

- CONSTRUCTION SHALL BE IN ACCORDANCE WITH THE CITY OF RIVERSIDE, DEPARTMENT OF PUBLIC WORKS, STANDARD DRAWINGS, AND THE STANDARD SPECIFICATIONS OF PUBLIC WORKS CONSTRUCTION, 1979 EDITION.
- THE CONTRACTOR SHALL FURNISH CONSTRUCTION SIGNING PER "CALIFORNIA MANUAL OF SIGNS, LIGHTS AND DEVICES FOR USE IN PERFORMANCE OF WORK UPON HIGHWAYS".
- THE PRIVATE ENGINEER SIGNING THESE PLANS IS RESPONSIBLE FOR ASSURING THE ACCURACY AND ACCEPTABILITY OF THE WORK HERON. IN THE EVENT OF DISCREPANCIES ARISING DURING CONSTRUCTION AS A RESULT OF ERRORS OR OMISSIONS, THE PRIVATE ENGINEER SHALL BE RESPONSIBLE FOR DETERMINING AN ACCEPTABLE SOLUTION AND REVISING THE PLANS FOR APPROVAL BY THE CITY.

CONSTRUCTION NOTES

- CONSTRUCT 8" V.C.P. SEWER MAIN
- CONSTRUCT 4" V.C.P. SEWER LATERAL (PLUG END)
- CONSTRUCT MANHOLE PER CITY OF RIVERSIDE STD. 500



666 Baker St Suite 253
Costa Mesa CA 92626
(714) 549-7511

PLANS PREPARED UNDER
SUPERVISION OF

George M. Paulsen

Date *Oct 16 79* R.C.E. No. *19830*

CITY OF RIVERSIDE
DOMESTIC SYSTEM

Fred Lantz 2/5/80
CHIEF UTILITIES ENGINEER, WATER DATE

CITY OF RIVERSIDE, CALIFORNIA
DEPARTMENT OF PUBLIC WORKS

APPROVED BY *[Signature]* DATE *2/5/80*
PRINCIPAL ENGINEER
TRAFFIC DIVISION
CHIEF P. W. ENGR. *[Signature]* 2.7
DATE *2/5/80*

RUSTIN AVENUE
MP-3-790
SEWER EXTENSION
RUSTIN STA. 18+00 TO STA. 21+20

PROJECT NO. 32-577-526

S-1229

SHEET 1 OF 1

HORIZ. SCALE: 1" = 40' VERT. SCALE: 1" = 4'

FILE NO.