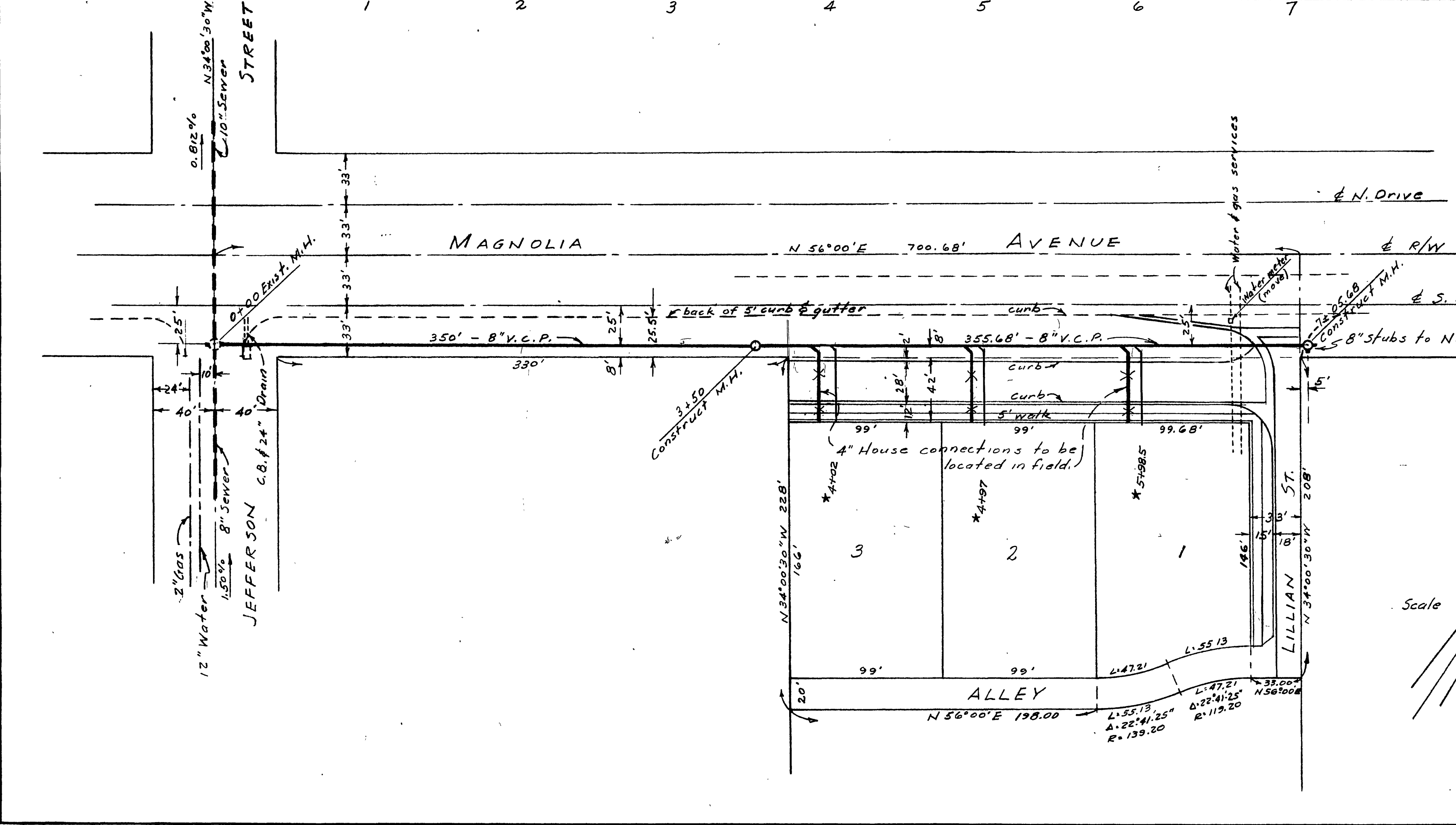
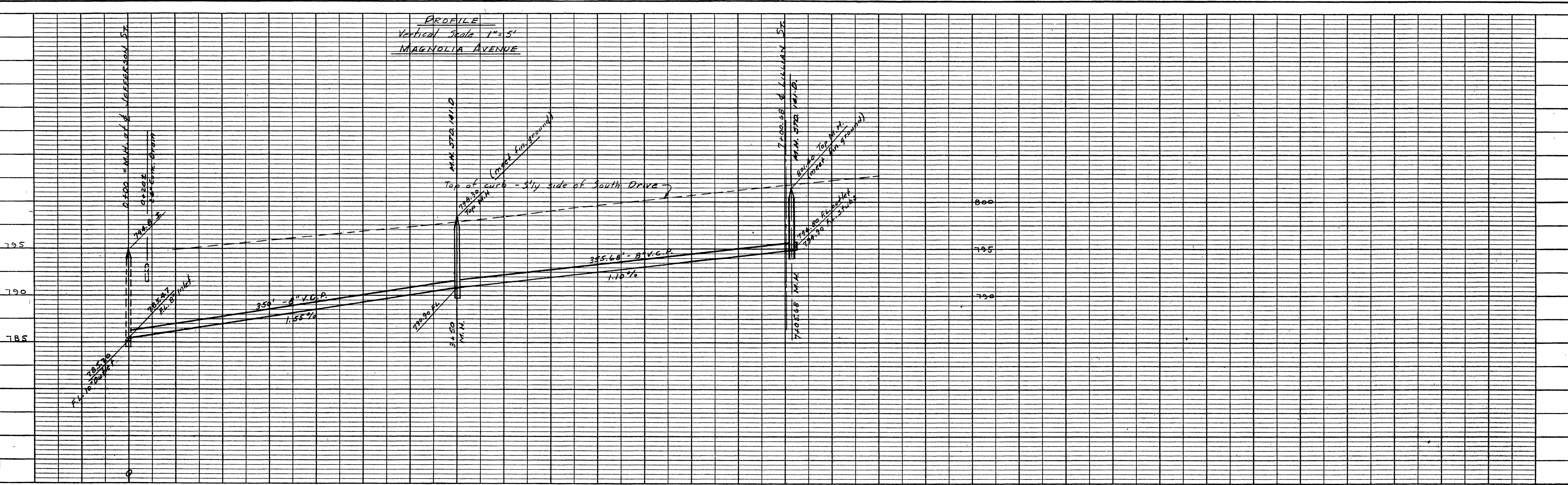


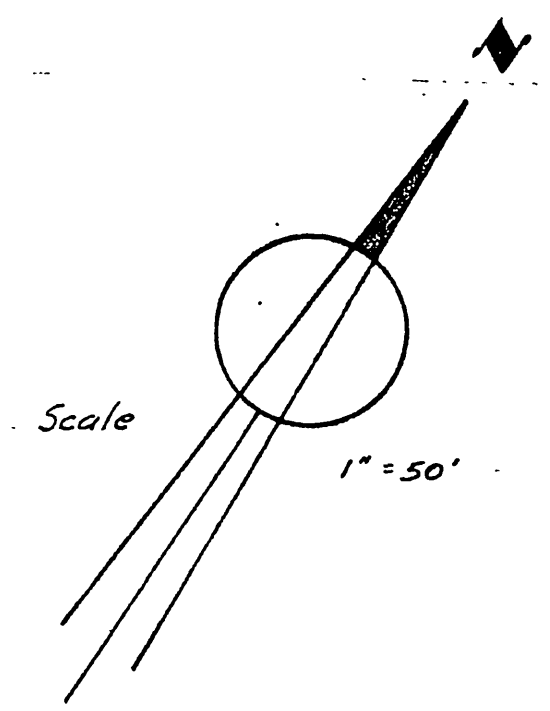
PLATE 1 - PLAN & PROFILE  
CLEANING MACHINE CO. S. F. CAL.  
NO. 10098



**NOTES -**  
B.M. Sp. in lead in Catch Basin SW. cor. Jefferson & Magnolia - Elev. 794.61  
Construction to be in accordance with City of Riverside Dept. of Public Works Standards and Specifications.

**ESTIMATE OF QUANTITIES**

8" V.C. Pipe	705 lin. ft.
4" V.C. House Connections	150 lin. ft.
Std. M.H. per City Std. 1A1-D	2
Wyes (8" x 4")	3



Reimb Contract # 32

\* "As Built" sewer laterals, 3-25-59, H. Ball

PROPERTY OF  
CITY OF RIVERSIDE  
DEPT. OF PUBLIC WORKS  
ENGINEERING DIVISION

PREPARED BY ALBERT A. WEBB ASSOCIATES  
CIVIL ENGINEERS  
APPROVED BY *[Signature]* DATE 4/2/58  
R.E. 9876

CITY OF RIVERSIDE, CALIFORNIA  
DEPARTMENT OF PUBLIC WORKS

SEWER PLAN & PROFILE  
OF  
MAGNOLIA AVE. & LILLIAN ST.  
IN  
WALNUT ACRES

HORIZ. SCALE 1"=50' VERTICAL SCALE 1"=5'

APPROVED BY *[Signature]*  
DIRECTOR OF PUBLIC WORKS

NO. **5-123**  
DATE *May 26, 1958* SHEET 1 OF 1

W.O. 57-354  
F.B. 354 J.B.

F.L.

D.N. 57-354-B

**PROFILE**

NO.	DATE

**PLAN**

NO.	DATE