

PLANS CHECKED AND FOUND TO COMPLY WITH CITY OF RIVERSIDE REQUIREMENTS.

BY *Neil K. Christman* 12/31/78  
C. G. ENGINEERING DATE

CITY OF RIVERSIDE  
DOMESTIC SYSTEM

*Wesley Hylan* 12-30-77  
CHIEF UTILITIES ENGINEER, WATER DATE

J. F. DAVIDSON ASSOCIATES  
CIVIL ENGINEERS - SURVEYORS - PLANNERS  
RIVERSIDE, CALIFORNIA

APPROVED BY *J. F. Davidson* DATE 4-27-77  
R.E. No. 17550

CHANGED LOT NOS. - TR. 9200	DATE 2/15/78	BY <i>S.H.B.</i>
CHANGE STREET NAME <i>DRIVE</i>	DATE 5/18/78	BY <i>S.H.B.</i>
ADD TR. BDRY FOR TR. 9200-182	DATE 5/18/78	BY <i>S.H.B.</i>
REVISIONS	APPR. DATE	ASSISTANT CITY ENG.
DESIGNED BY S.R.H.	DRAWN BY C.M.F.	CHECKED BY P.A.

CITY OF RIVERSIDE, CALIFORNIA  
DEPARTMENT OF PUBLIC WORKS

APPROVED BY *John C. White* DATE 2/9/79  
DIRECTOR OF PUBLIC WORKS

SEWER PLAN & PROFILE

TRACT 9200  
RHINELANDER DRIVE

HORIZ. SCALE: 1" = 40' VERT. SCALE: 1" = 4'

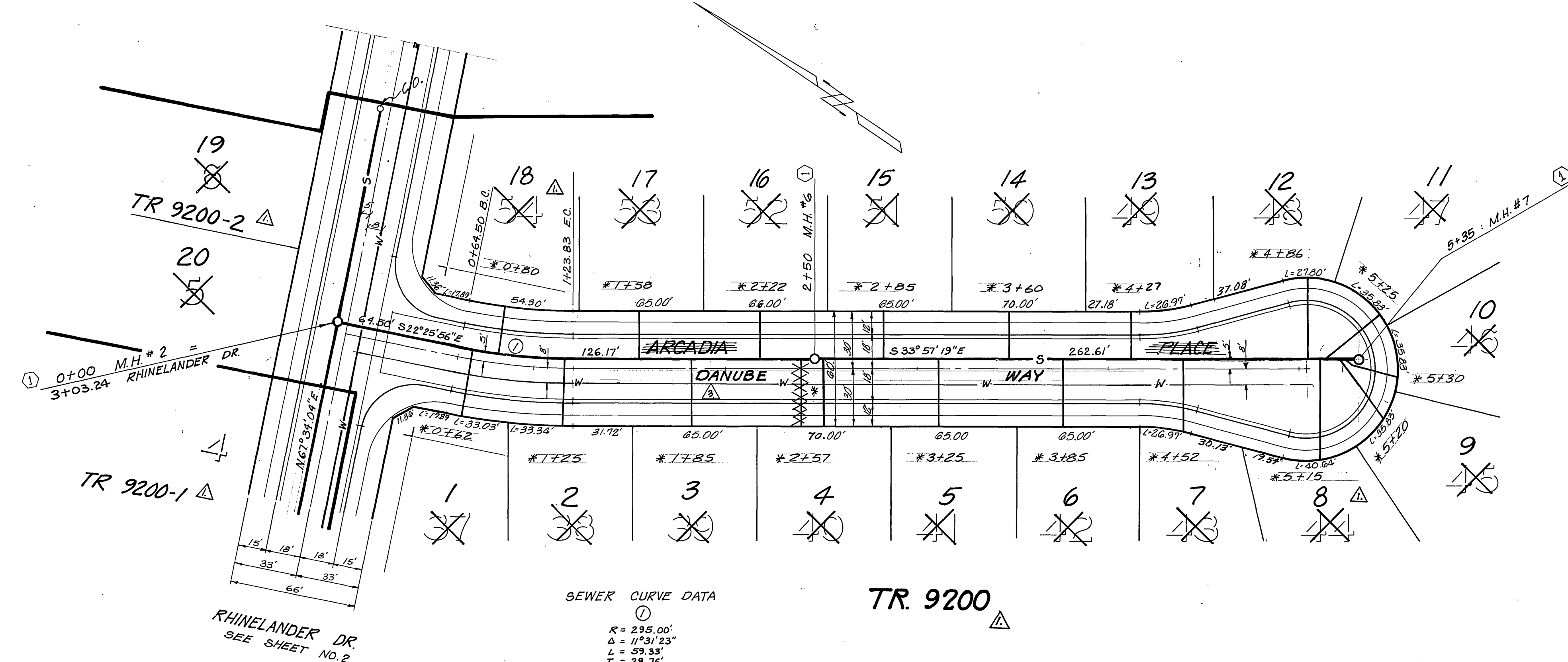
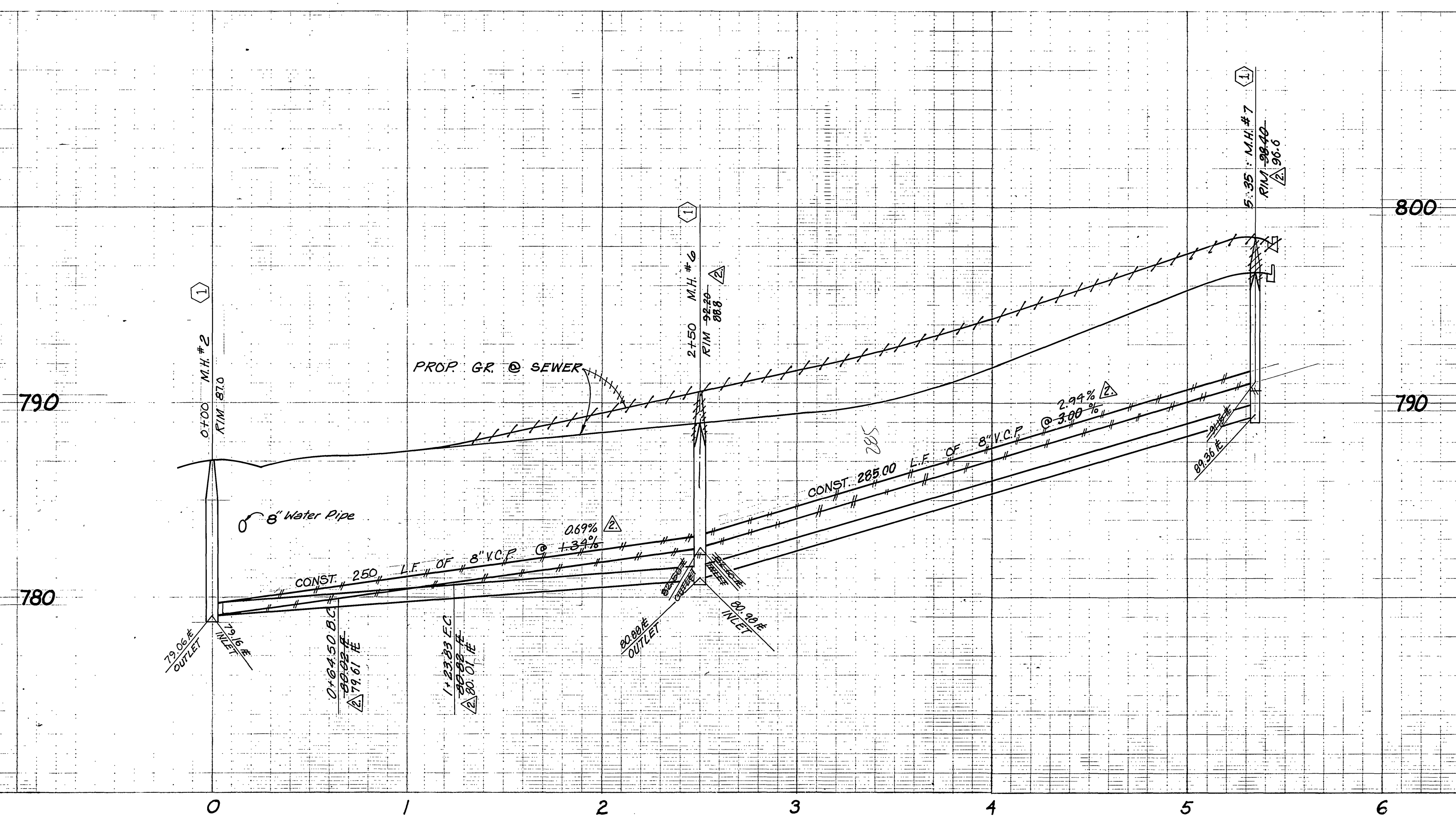
PROJECT NO. S-1230

SHEET 2 OF 4

FILE NO. 5548

BENCH MARK: City of Riverside B.M. E3E, Pk. Nail S.E. curb return Tyler & Balmoral Elev. 808.53

\* As built 9-9-85 76



\*As built 9-9-85 T4

BENCH MARK: City of Riverside B.M. E3E, P.K. Nail S.E. curb return Tyler & Balmoral Elev. 808.53 Indexed RW

PLANS CHECKED AND FOUND TO COMPLY WITH CITY OF RIVERSIDE REQUIREMENTS.  
 BY *Tyler & Chotiana* 12/31/79  
 C. G. ENGINEERING DATE

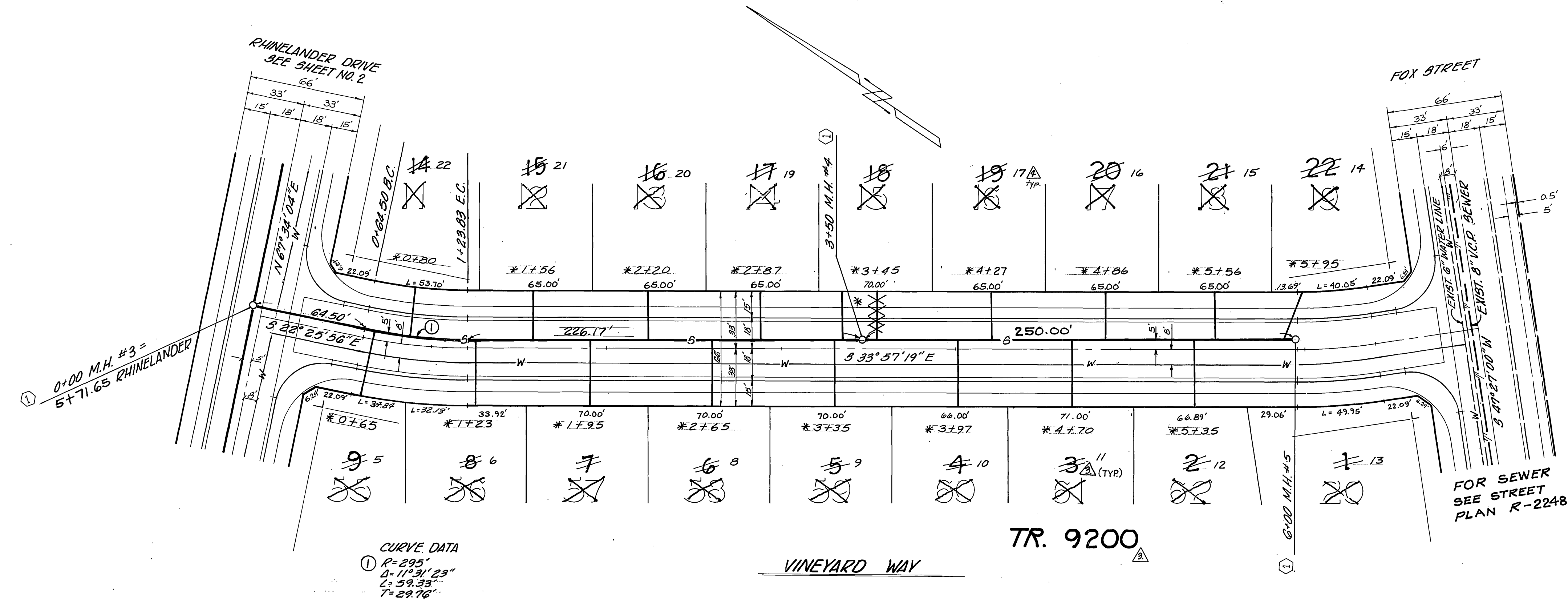
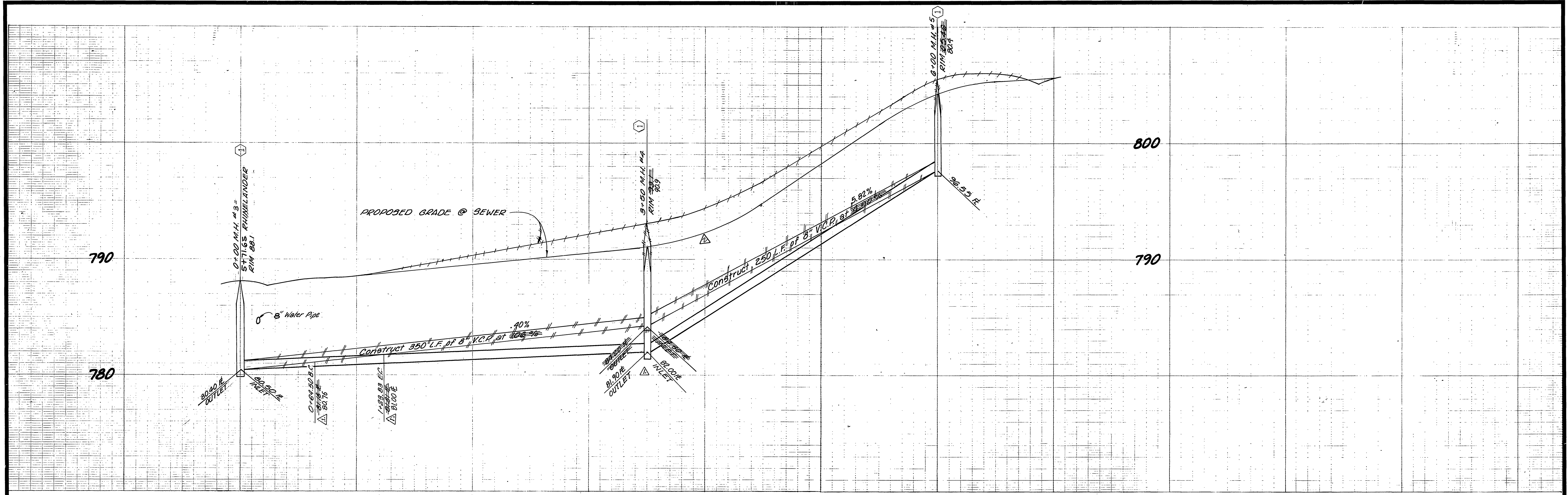
CITY OF RIVERSIDE  
 DOMESTIC SYSTEM  
*Walter J. Johnson* 12-30-77  
 CHIEF UTILITIES ENGINEER, WATER DATE

J. F. DAVIDSON ASSOCIATES  
 CIVIL ENGINEERS - SURVEYORS - PLANNERS  
 RIVERSIDE, CALIFORNIA  
 APPROVED BY *[Signature]* DATE 12-27-77  
 S.E. No. 172320  
 W.D. 3536 FOR STANDARD SPECIFIC

CHANGE STREET NAME <i>DWC</i>	APPROVED BY <i>[Signature]</i>	DATE
REVISED SEWER GRADES <i>JWC</i>	OFFICE ENGINEER	DATE
Delimited Tr. Bary for Tr. 9200-1A-2	PARK DEPARTMENT	DATE
REVISIONS	TRAFFIC DIVISION	DATE
DESIGNED BY SRH	ASSISTANT CITY ENG.	DATE
DRAWN BY SMF		
CHECKED BY RA		

CITY OF RIVERSIDE, CALIFORNIA  
 DEPARTMENT OF PUBLIC WORKS  
 APPROVED BY *[Signature]*  
 DIRECTOR OF PUBLIC WORKS  
 DATE 2/1/80

SEWER PLAN & PROFILE	PROJECT NO.
TRACT 9200	S-1230
ARCADIA PLACE	SHEET 3 OF 4
DANUBE WAY	FILE NO. 5548
HORIZ. SCALE: 1" = 40'	VERT. SCALE: 1" = 4'



CURVE DATA  
 ① R=293'  
 Δ=113°21'23"  
 L=59.33'  
 T=29.76'

PLANS CHECKED AND FOUND TO COMPLY WITH CITY OF RIVERSIDE REQUIREMENTS.  
 BY *Neil K. Suter* 12/21/77  
 C. E. ENGINEERING DATE

CITY OF RIVERSIDE  
 DOMESTIC SYSTEM  
*Walter Johnson*  
 CHIEF UTILITIES ENGINEER, WATER 12-30-77  
 DATE

J. F. DAVIDSON ASSOCIATES  
 CIVIL ENGINEERS - SURVEYORS - PLANNERS  
 RIVERSIDE, CALIFORNIA  
 APPROVED BY *J. F. Davidson* DATE 2/2/78  
 R.E. No. 17530  
 W.O. 5536 FOR Standard Pacific

CHANGED LOT NOS. - TR 9200 1/15/77	MLK 2/15/84
Added new lot numbers to 9200 CML	
REVISED STREET PROFILE OVER SEWER	
REVISED SEWER GRADES QWC	
MARK REVISIONS	APPR. DATE
DESIGNED BY SRH	DRAWN BY SMF
CHECKED BY ZJA	

CITY OF RIVERSIDE, CALIFORNIA  
 DEPARTMENT OF PUBLIC WORKS  
 APPROVED BY *Walter Johnson*  
 OFFICE ENGINEER  
 PARK DEPARTMENT  
 TRAFFIC DIVISION  
 ASSISTANT CITY ENG. 2-11-78  
 DATE 2/4/80

BENCH MARK: City of Riverside B.M. E3E, P.K. Neil S.E. curb Elev. 808.53  
 \*As. built 9-9-85 7/2  
 INDEXED RMP  
 SEWER PLAN & PROFILE  
 TRACT 9200  
 VINEYARD WAY  
 PROJECT NO. S-1230  
 SHEET 4 OF 4  
 FILE NO. 5548  
 HORIZ. SCALE: 1" = 40'  
 VERT. SCALE: 1" = 4'