

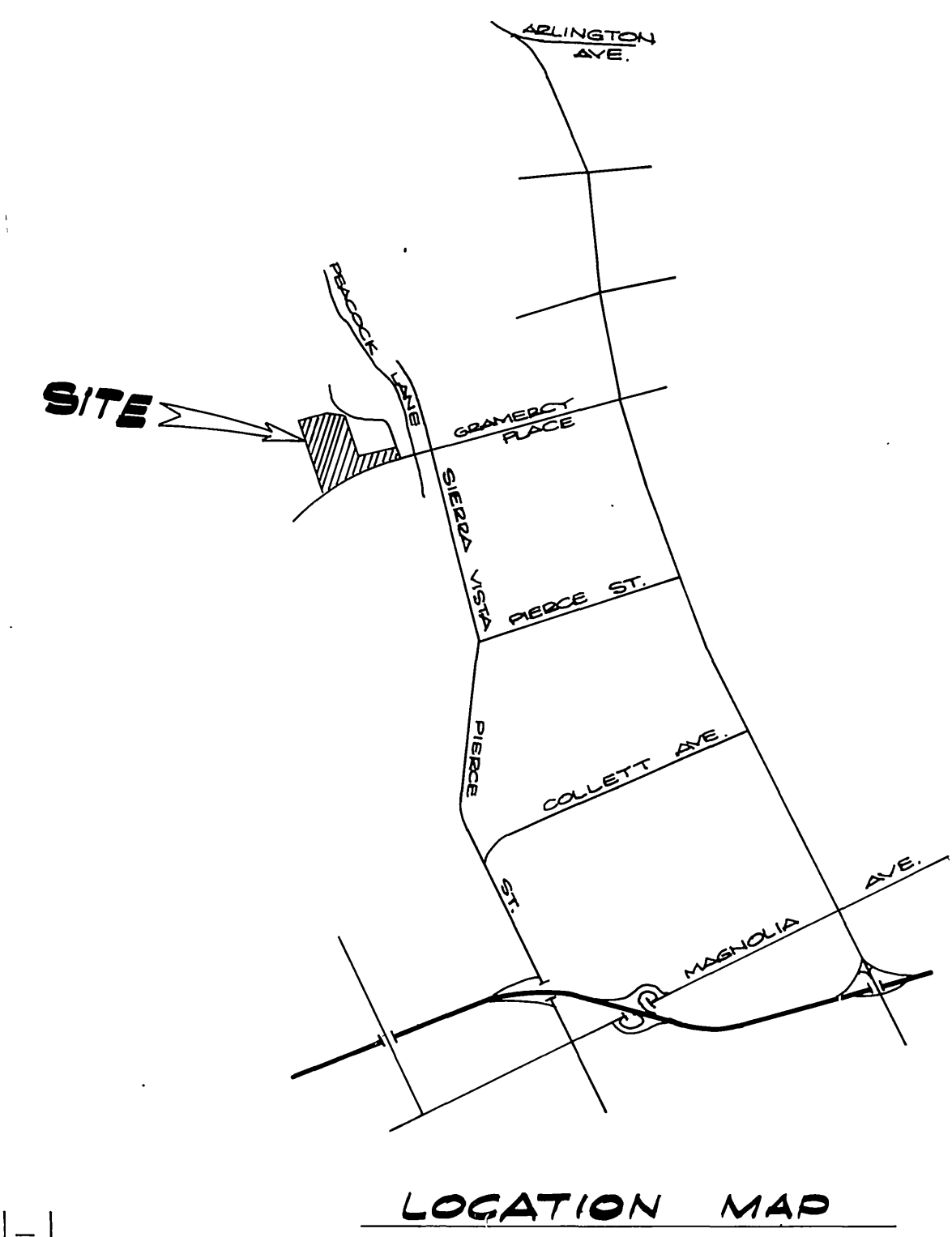
GENERAL NOTES:

1. THE PRIVATE ENGINEER SIGNING THESE PLANS IS RESPONSIBLE FOR THE ACCURACY AND ACCEPTABILITY OF THE WORK HEREON. IN THE EVENT OF DISCREPANCIES ARISING DURING CONSTRUCTION, THE PRIVATE ENGINEER SHALL BE RESPONSIBLE FOR DETERMINING AN ACCEPTABLE SOLUTION, AND REVISING THE PLANS FOR APPROVAL BY THE CITY.
2. CONSTRUCTION SHALL BE IN ACCORDANCE WITH STANDARD SPECIFICATIONS FOR PUBLIC WORKS CONSTRUCTION 1937 EDITION AND THE CITY OF RIVERSIDE PUBLIC WORKS DEPT. STANDARD DRAWINGS.
3. IT SHALL BE THE RESPONSIBILITY OF THE CONTRACTOR TO CLEAR THE RIGHT OF WAY IN ACCORDANCE WITH THE PROVISIONS OF THE LAW AS IT AFFECTS EACH UTILITY INCLUDING IRRIGATION LINES AND APPURTENANCES AND AT NO COST TO THE CITY.
4. PIPE SHALL BE BEDDED PER CASE 1, STANDARD DRAWING NO. 482, UNLESS OTHERWISE SPECIFIED ON THE PLANS.
5. LOCATION OF WYES AND LATERALS TO BE DETERMINED IN THE FIELD AT THE DIRECTION OF THE OWNER. AVOID CONFLICT WITH PROPOSED AND/OR EXISTING FACILITIES.
6. ALL STUBS AND LATERALS TO BE CONSTRUCTED IN ACCORDANCE WITH STANDARD DRAWING NO. 562, STUBS SHALL BE PLUGGED AND CAPPED.
7. MANHOLE FRAMES AND COVERS TO BE SET AS NOTED IN PROFILES BY SEWER CONTRACTOR AFTER FINAL PAVING OF STREET.
8. LATERALS ARE TO BE 4" V.C.P. AND EXTENDED TO PROPERTY LINE.
9. PRIOR TO CONSTRUCTION OF SEWER, CONTRACTOR IS TO EXPOSE THE EXISTING SEWER AND CONTACT THE ENGINEER FOR VERIFICATION OF EXISTING LOCATION AND ELEVATION.
10. PLUG SHALL BE INSTALLED AND REMAIN IN PLACE WHERE THE NEW SEWER CONNECTS WITH THE EXISTING SEWER UNTIL SUCH TIME AS THE NEW SEWER IS ACCEPTED BY THE CITY.
11. SEWER AND WATER MAIN ENCASUREMENT SHALL BE CONSTRUCTED PER CITY WATER DIVISION STD. DRAWINGS C.W.D.-022 & C.W.D.-023.

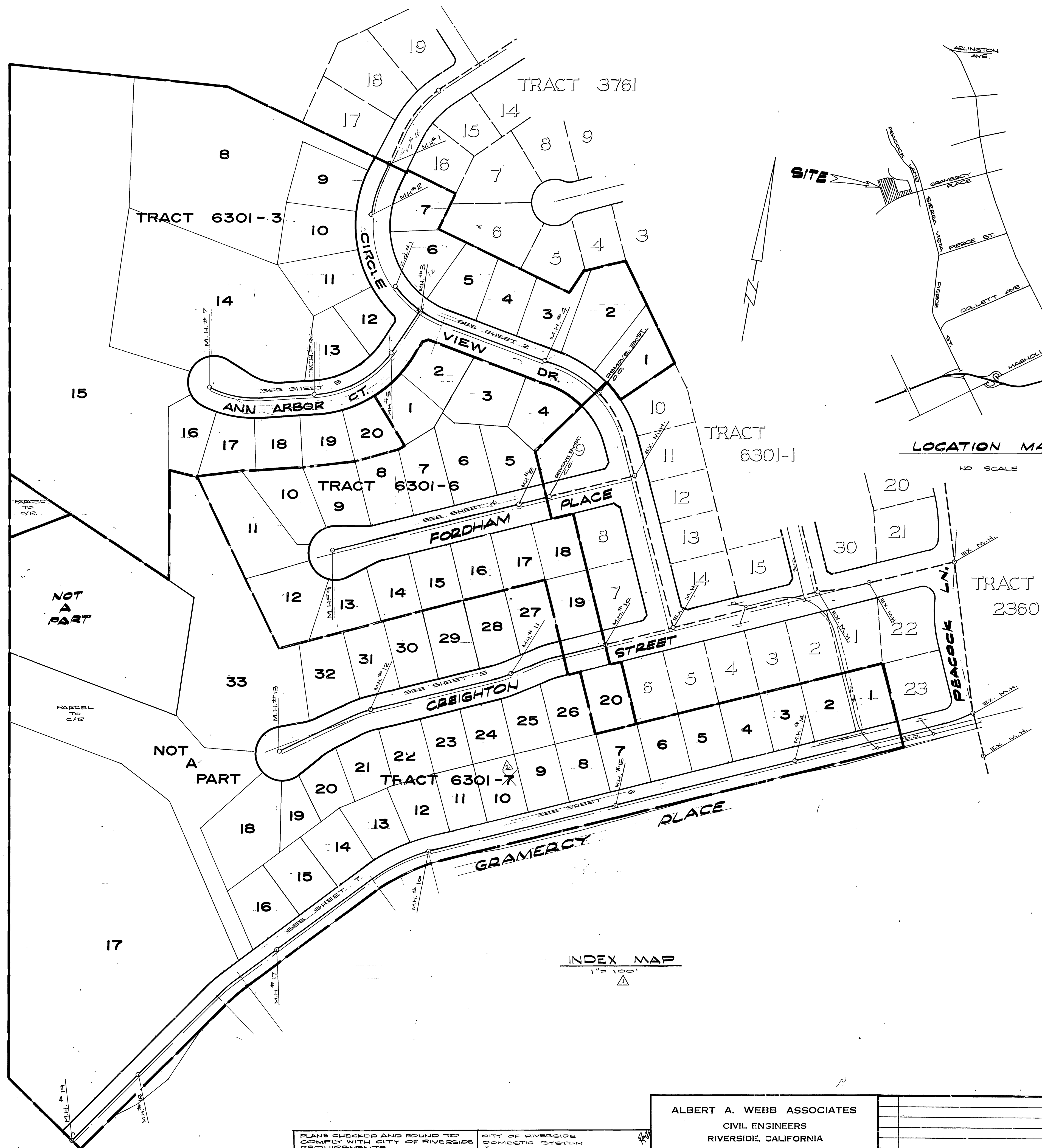
NOTICE TO CONTRACTOR:

THE EXISTENCE AND LOCATION OF UNDERGROUND UTILITY PIPES OR STRUCTURES SHOWN ON THESE PLANS ARE OBTAINED BY A SEARCH OF THE AVAILABLE RECORDS. TO THE BEST OF OUR KNOWLEDGE THERE ARE NO EXISTING UTILITIES EXCEPT AS SHOWN ON THESE PLANS.

THE CONTRACTOR IS REQUIRED TO TAKE DUE PRECAUTIONARY MEASURES TO PROTECT THE UTILITY LINES SHOWN AND ANY OTHER LINES NOT OF RECORD OR NOT SHOWN ON THESE PLANS.



INDEX MAP
1" = 100'



BENCH MARK:

BRASS DISC IN 12" CONC. MONUMENT, SW. CORNER OF GRAMERCY & SERBA VISTA. ON BACK OF CURB AT THE N.W. END OF SIDEWALK PLANTER. CITY B.M. FI-A ELEV. = 806.587

PLANS CHECKED AND FOUND TO COMPLY WITH CITY OF RIVERSIDE DOMESTIC SYSTEM REQUIREMENTS
BY: *John A. Stearns*
DATE: 3/3/82

CITY OF RIVERSIDE DOMESTIC SYSTEM REQUIREMENTS
BY: *Fred Runk*
DATE: 3/3/82

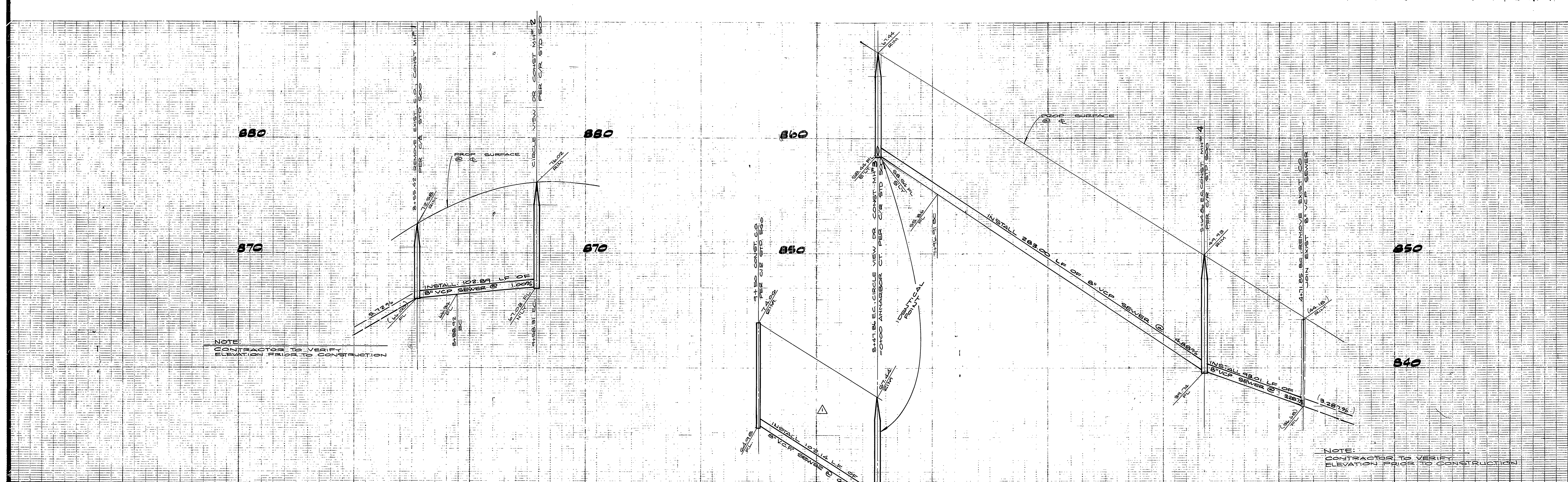
ALBERT A. WEBB ASSOCIATES
CIVIL ENGINEERS
RIVERSIDE, CALIFORNIA
APPROVED BY: *R. Michael Codd* DATE: 1-7-80
R.E. No. 20266

REVISIONS	DATE	BY
REVISOR'S MARK	DATE	BY

CITY OF RIVERSIDE, CALIFORNIA
PUBLIC WORKS DEPARTMENT
APPROVED BY: *[Signature]* DATE: 1/12/80
PRINCIPAL ENGINEER
PARK DEPARTMENT
TRAFFIC DIVISION
CHIEF PUB. WKS. ENGR.

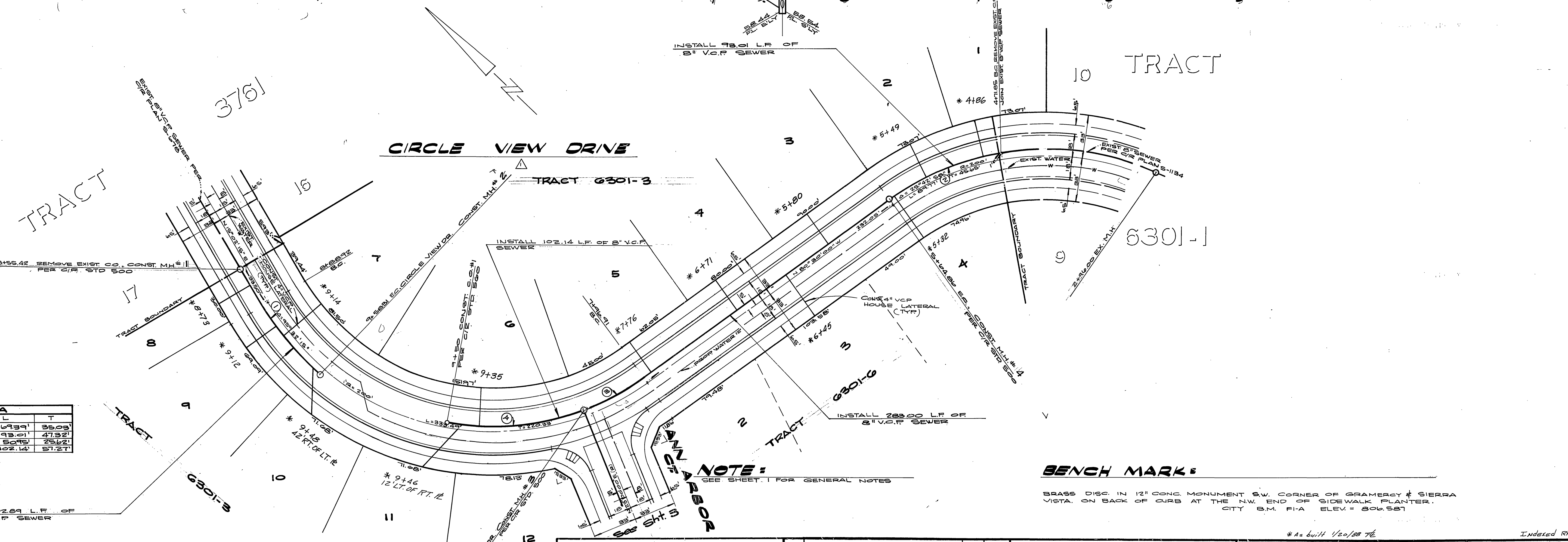
SEWER PLAN & PROFILE
TRACT NO. 6301-3, 6 & 7
INDEX MAP

ACCOUNT No. 77-168
DRAWING NUMBER
S-1234
SHEET 1 OF 7
77-168



NOTE:
CONTRACTOR TO VERIFY
ELEVATION PRIOR TO CONSTRUCTION

NOTE:
CONTRACTOR TO VERIFY
ELEVATION PRIOR TO CONSTRUCTION



CURVE DATA			
No.	Δ	R	T
1	19° 23' 38"	205.00'	35.09'
2	25° 59' 44"	205.00'	47.32'
3	14° 58' 13"	115.00'	25.62'
4	30° 00' 40"	175.00'	31.21'

PLANS CHECKED AND FOUND TO COMPLY WITH CITY OF RIVERSIDE REQUIREMENTS

CITY OF RIVERSIDE DOMESTIC SYSTEM

BY: *John A. Stan* 2/15/80
DATE

BY: *Fred Lewis* 3/5/80
DATE

ALBERT A. WEBB ASSOCIATES
CIVIL ENGINEERS
RIVERSIDE, CALIFORNIA

APPROVED BY: *R. Michael Coff* DATE 1-7-80
R.E. No. 30266

W.D. THIS FOR CALMARK PROPERTIES INC. F.B. 1039

DESIGNED BY: *E.P.* DRAWN BY: *E.P.* CHECKED BY: *M.C.*

MARK REVISIONS

MARK	REVISIONS	APPR.	DATE
Δ	DELETED ANAPOLIS ST. EXTENSION SEWER - 541.90 TO 543.00 (11.10)	AVM	2/22/80

CITY OF RIVERSIDE, CALIFORNIA
PUBLIC WORKS DEPARTMENT

APPROVED BY: *R. Michael Coff* DATE 2/22/80
PRINCIPAL ENGINEER
PARK DEPARTMENT
TRAFFIC DIVISION
CHIEF P.W.S. ENGR.

SEWER PLAN & PROFILE

TRACT NO. 6301-3
CIRCLE VIEW DR.

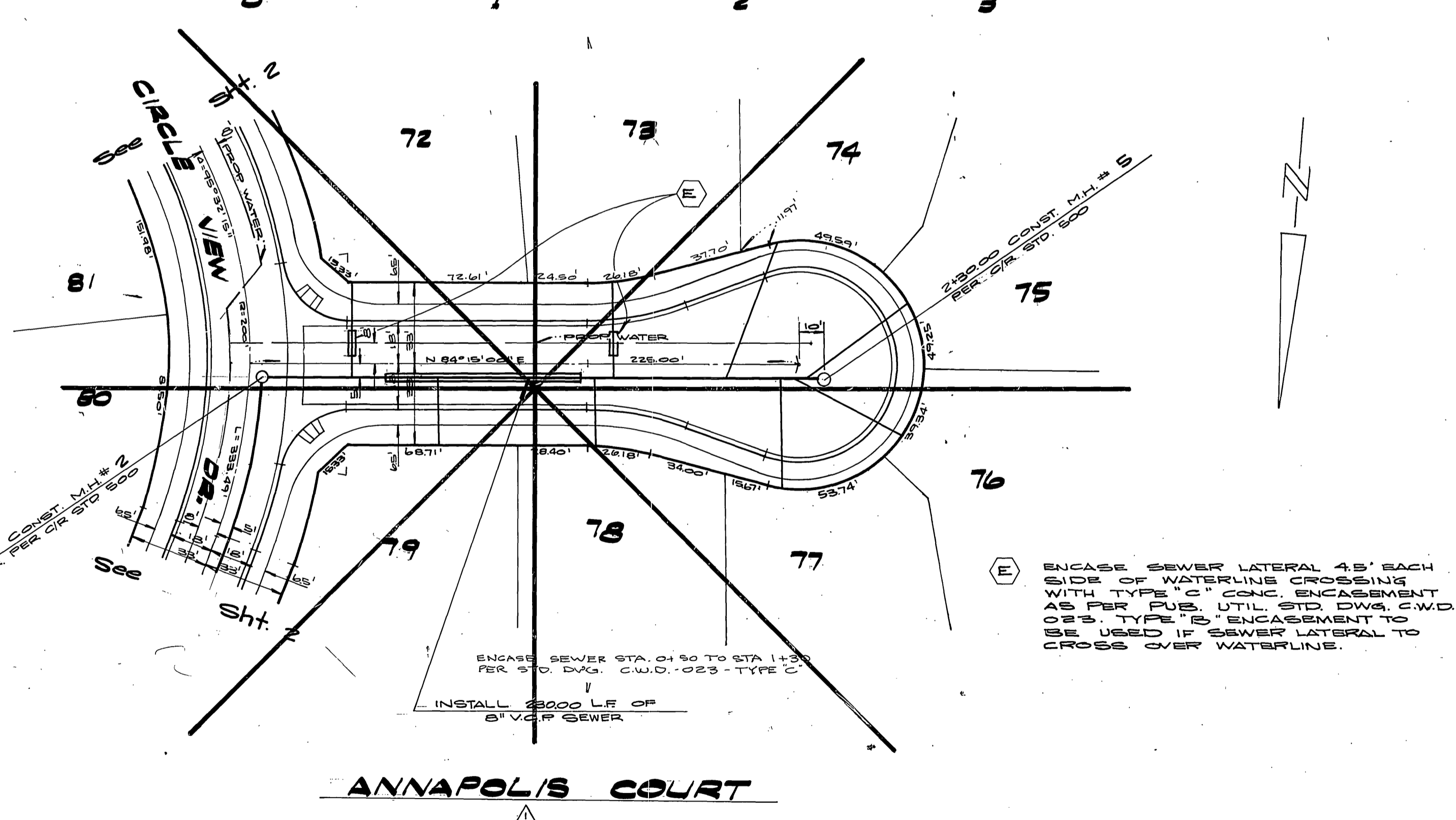
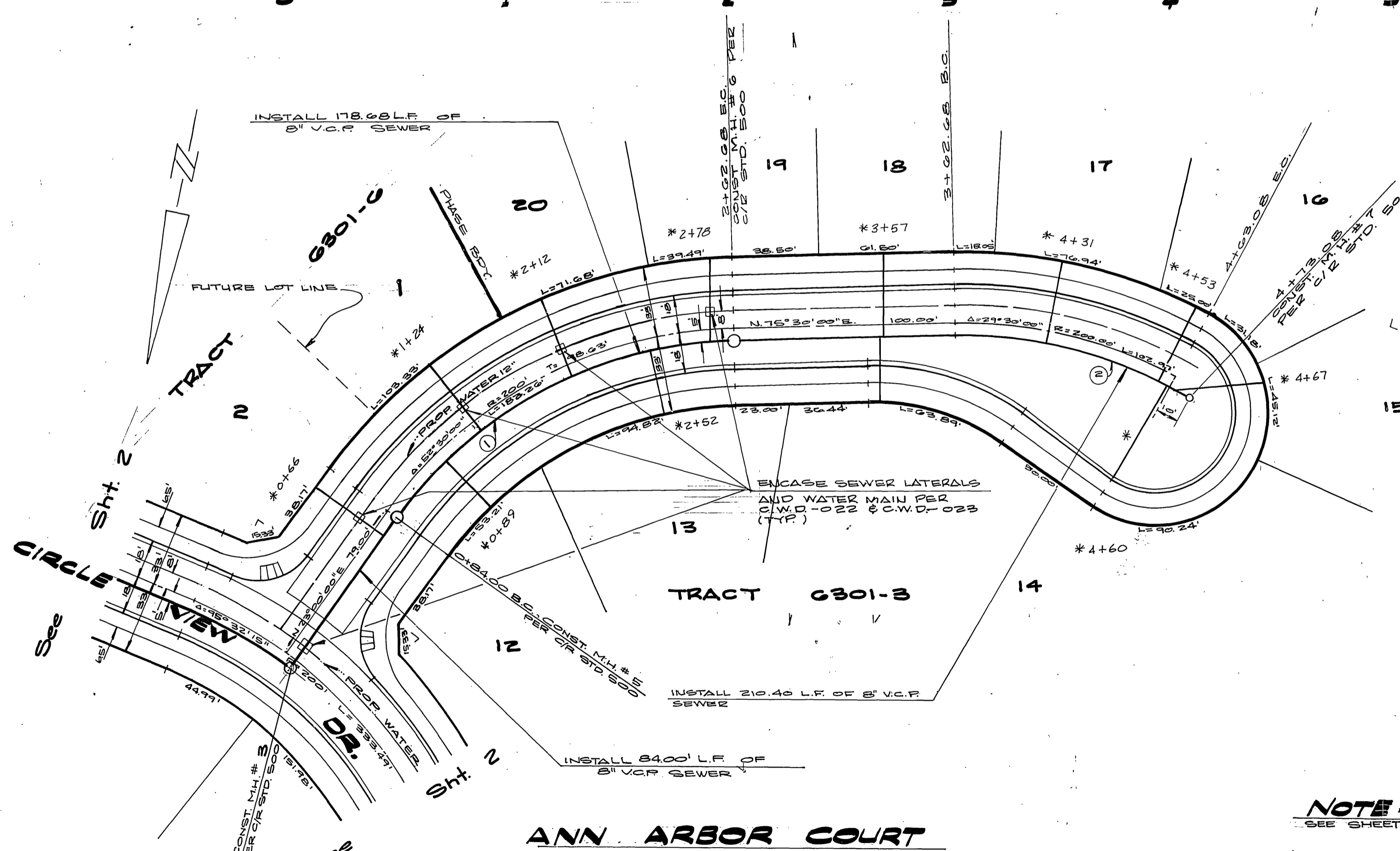
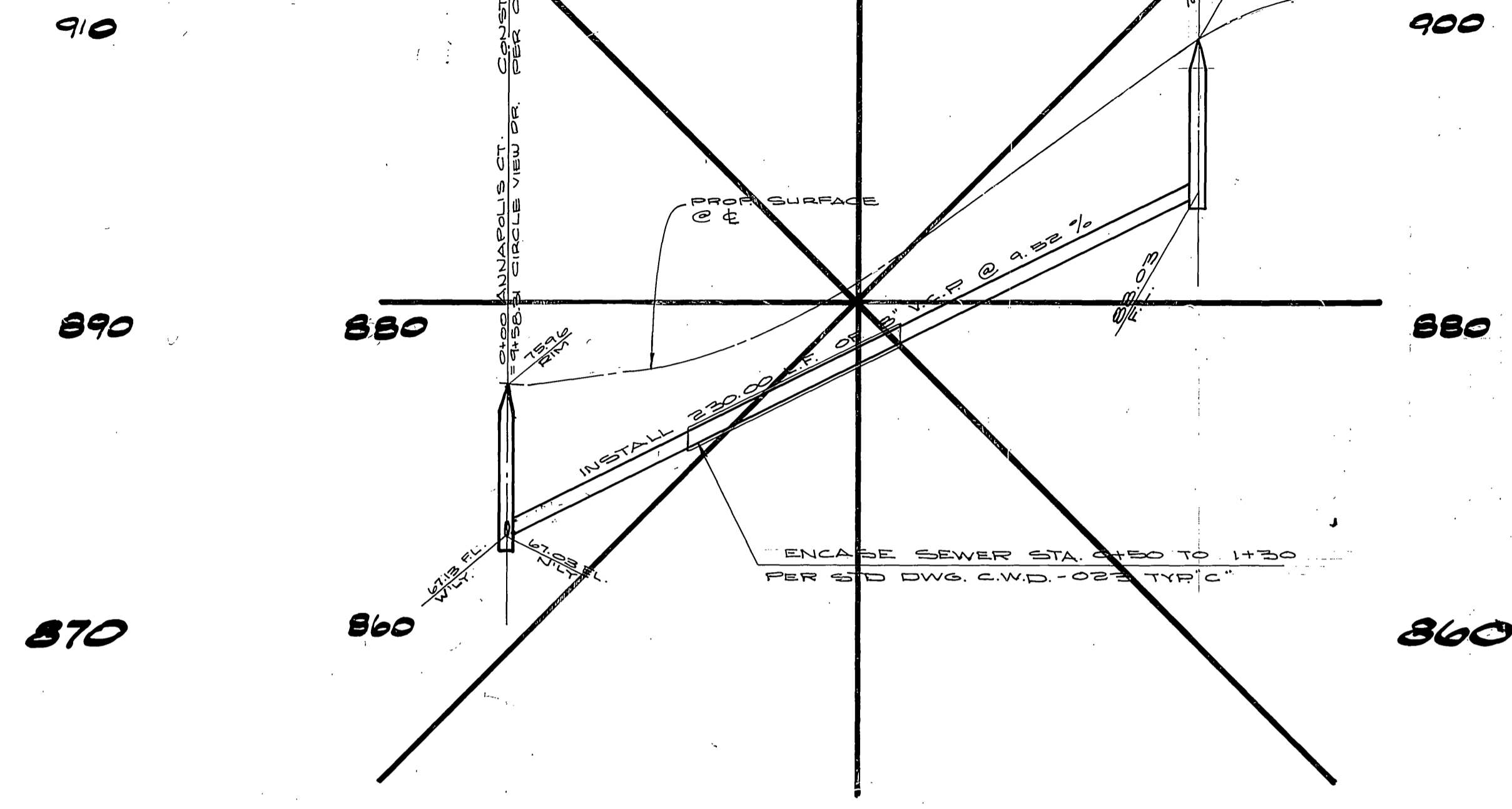
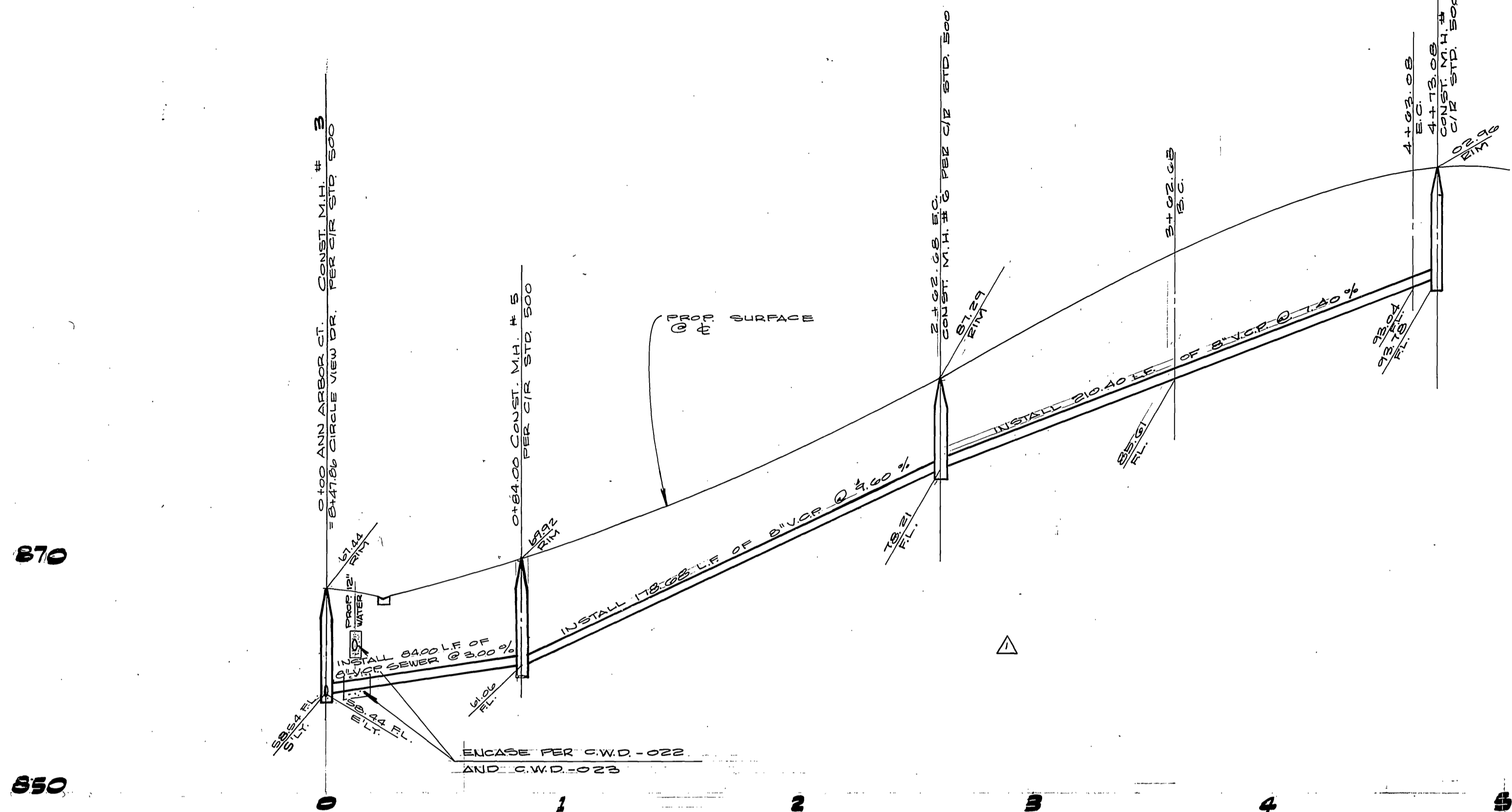
SCALE: HORIZ. 1" = 40', VERT. 1" = 4'

ACCOUNT No. 77-168
DRAWING NUMBER

S-1234

SHEET 2 OF 7

77-168



NOTE:
SEE SHEET 1 FOR GENERAL NOTES

BENCH MARK:
BRASS DISC IN 12" CONC MONUMENT SW CORNER OF GRAMERCY & SIERRA VISTA, ON BACK OF CURB AT THE N.W. END OF SIDEWALK PLANTER. CITY S.M. FI-A ELEV. = 806.587

No.	Δ	R	L	T
1	62°32'00"	185.00'	178.08'	99.13'
2	23°32'00"	185.00'	100.40'	51.34'

PLANS CHECKED AND FOUND TO COMPLY WITH CITY OF RIVERSIDE DOMESTIC SYSTEM REQUIREMENTS.
CITY OF RIVERSIDE
APPROVED BY: *Fred Raut* 3/3/80
C.E. ENGINEERS DATE

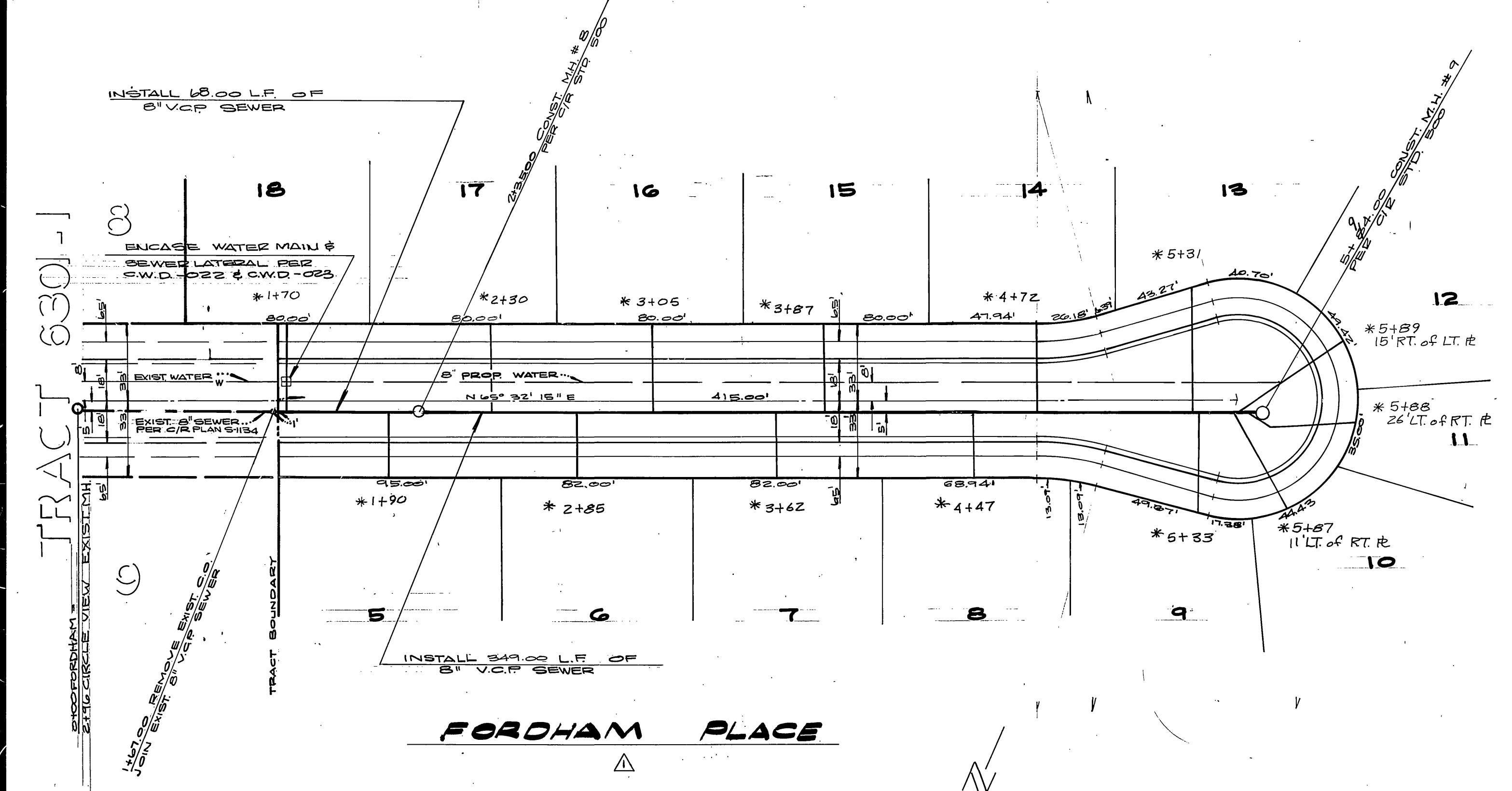
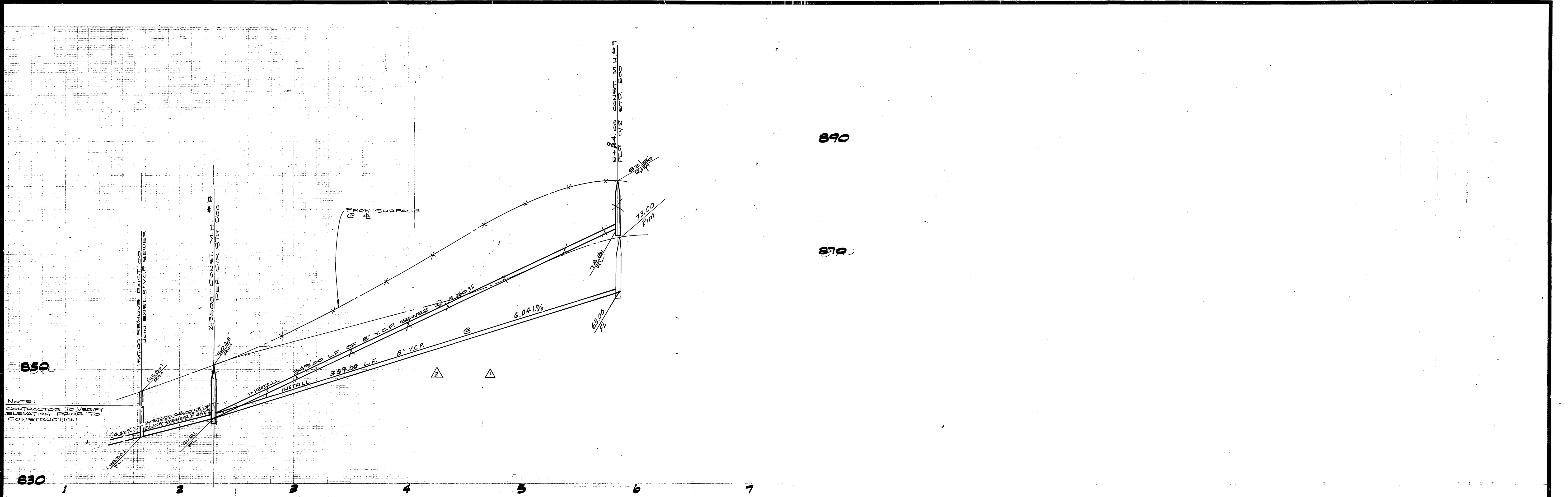
ALBERT A. WEBB ASSOCIATES
CIVIL ENGINEERS
RIVERSIDE, CALIFORNIA
APPROVED BY: *R. Michael Coel* DATE 1-7-80
R.E. No. 30266
W.D. 77-168 FOR CALMARK PROPERTIES INC. P.B. 1039

DESIGNED BY: *R.P.* DRAWN BY: *R.P.* CHECKED BY: *M.C.*

CITY OF RIVERSIDE, CALIFORNIA
PUBLIC WORKS DEPARTMENT
APPROVED BY: *R. Michael Coel* DATE 2/22/80
PRINCIPAL ENGINEER
PARK DEPARTMENT
TRAFFIC DIVISION
CHIEF PUB. WKS. ENGR.

SEWER PLAN & PROFILE
TRACT No. 6301-3
ANNAPOLIS CT., ANNARBOR CT.
SCALE: HORIZ. 1"=40' VERT. 1"=8'

ACCOUNT No. 77-168
DRAWING NUMBER
S-1234
SHEET 3 OF 7
77-168



NOTE:
SEE SHEET 1 FOR GENERAL NOTES

BENCH MARK:

BRASS DISC. IN 12" CONC. MONUMENT S.W. CORNER OF GRAMERCY & SIERRA VISTA. ON BACK OF CURB AT THE N.W. END OF SIDEWALK PLANTER. CITY S.M. F.I.A. ELEV. = 606587.

PLANS CHECKED AND FOUND TO COMPLY WITH CITY OF RIVERSIDE REQUIREMENTS

BY: *John A. Smith* 2/15/80
C.E. ENGINEERING DATE

CITY OF RIVERSIDE DOMESTIC SYSTEM

BY: *Fred Rount* 3/5/80
CHIEF UTILITIES ENGINEER WATER DATE

ALBERT A. WEBB ASSOCIATES
CIVIL ENGINEERS
RIVERSIDE, CALIFORNIA

APPROVED BY: *R. Michael Cell* DATE 1-7-80
R.E. No. 302412

MARK	REVISIONS	APPR.	DATE
△	REVISED SEWER TO MATCH NEW STREET ALIGNMENT (PLAN ONLY)	<i>AW</i>	1/14/80
△	REVISED SEWER TO MATCH NEW GRADES	<i>AW</i>	1/15/80

CITY OF RIVERSIDE, CALIFORNIA
PUBLIC WORKS DEPARTMENT

APPROVED BY: *R. Michael Cell* DATE 1-7-80
PRINCIPAL ENGINEER

APPROVED BY: *R. Michael Cell* DATE 1-7-80
DIRECTOR OF PUBLIC WORKS

CHIEF PUB. WKS. ENGR. *AW* DATE 1/22/80

SEWER PLAN & PROFILE

TRACT NO. 6301-6

FORDHAM PL.

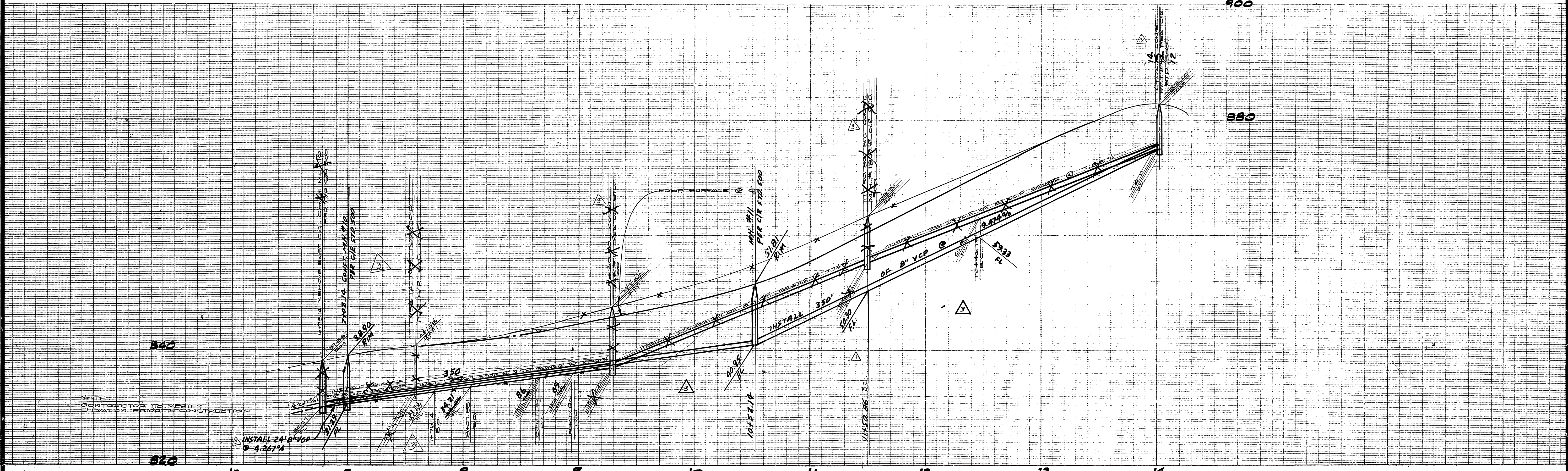
SCALE: HORIZ. 1" = 40' VERT. 1" = 8'

ACCOUNT No. 77-168

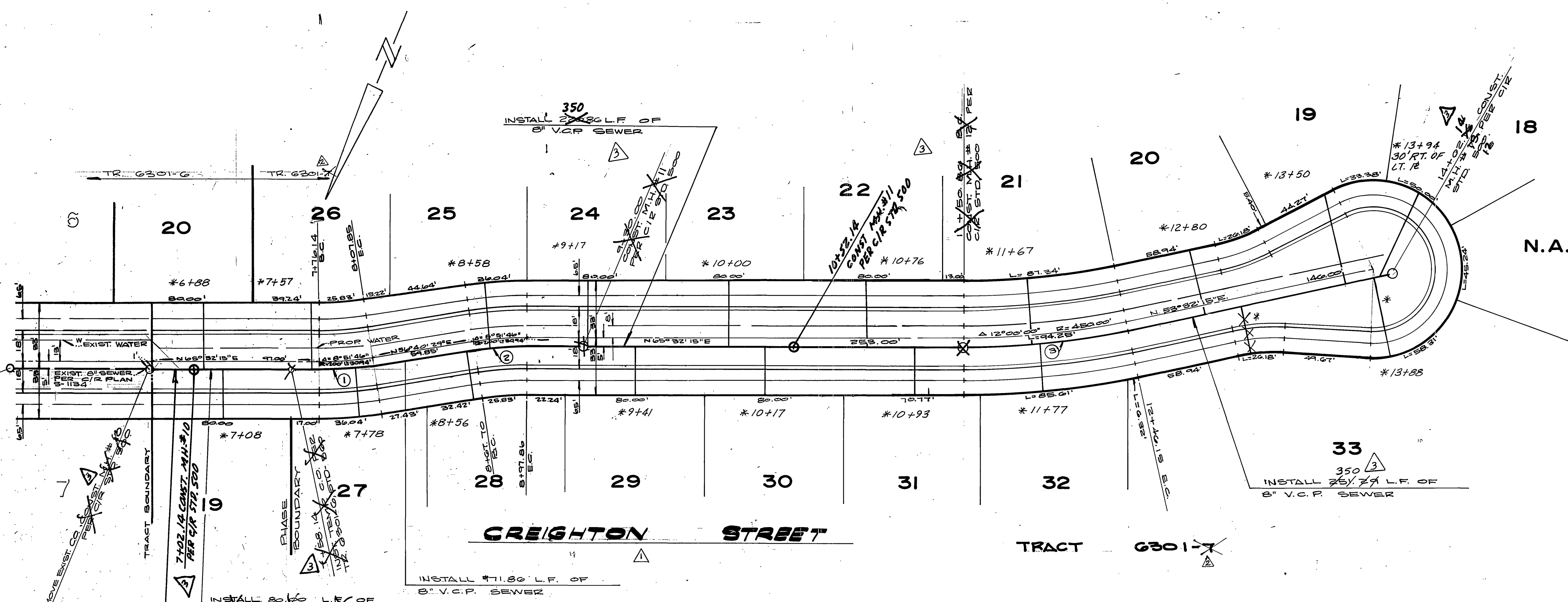
DRAWING NUMBER S-1234

SHEET 4 OF 7

77-168



NOTE:
CONTRACTOR TO VERIFY
ELEVATION PRIOR TO CONSTRUCTION



NOTE:
SEE SHEET 1 FOR GENERAL NOTES

BENCH MARK.

BRASS DISC IN 12" CONC. MONUMENT SW. CORNER OF GRAMERCY & SIERRA VISTA. ON BACK OF CURB AT THE N.W. END OF SIDEWALK PLANTER. CITY B.M. F-1-A ELEV. = 806.587

* As built 1/20/80 76

NO.	Δ	R	L	T
1	05° 51' 46"	205.00'	31.71'	15.89'
2	05° 51' 46"	195.00'	30.16'	15.11'
3	12° 00' 00"	425.00'	65.24'	47.32'

PLANS CHECKED AND FOUND TO COMPLY WITH CITY OF RIVERSIDE REQUIREMENTS
 CITY OF RIVERSIDE DOMESTIC SYSTEM
 APPROVED BY: *[Signature]* DATE: 2/15/80
 E.C. ENGINEERING DATE: 2/15/80
 CHIEF UTILITIES ENGINEER/WATER DATE: 3/3/80

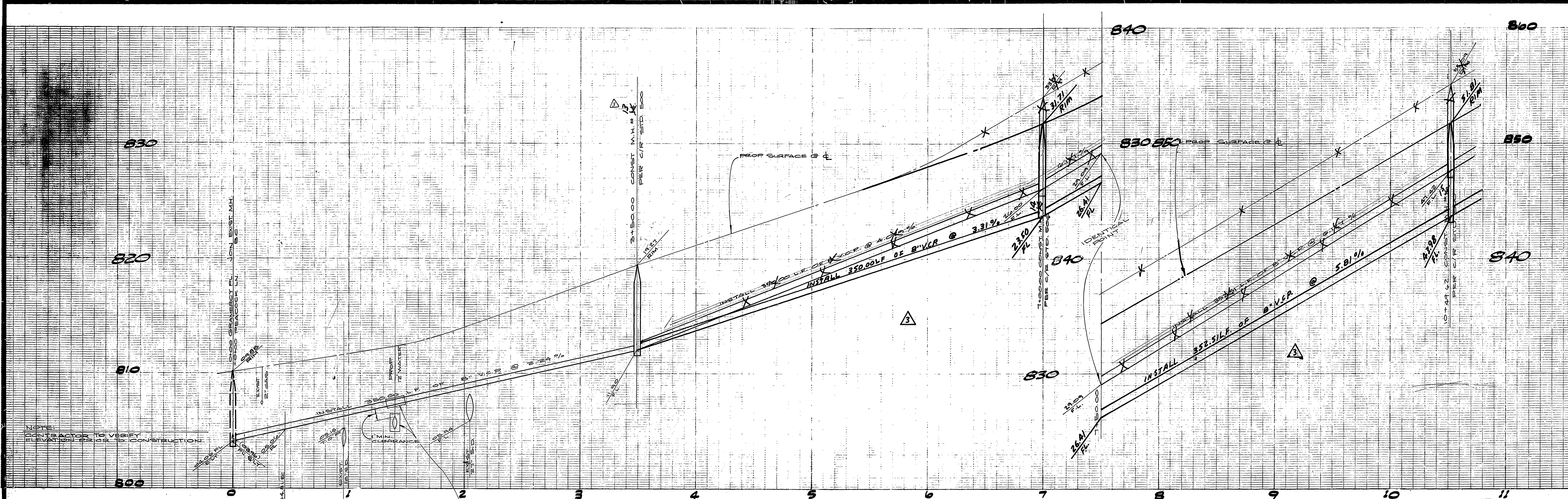
ALBERT A. WEBB ASSOCIATES
 CIVIL ENGINEERS
 RIVERSIDE, CALIFORNIA
 APPROVED BY: *[Signature]* DATE: 1-7-80
 R.E. No. 32866
 W. UTILITIES FOR CALMARK PROPERTIES INC. P. 103A

REVISION	DATE
1. REVISED SEWER TO MATCH REVISIONS	9/14/80
2. REVISED TRACT NUMBER	9/14/80
3. REVISED SEWER TO MATCH NEW	11/22/80
4. SPREADSHEET MATCH NEW	11/22/80
5. REVISED SEWER TO MATCH NEW	11/22/80
6. REVISED SEWER TO MATCH NEW	11/22/80
7. REVISED SEWER TO MATCH NEW	11/22/80
8. REVISED SEWER TO MATCH NEW	11/22/80
9. REVISED SEWER TO MATCH NEW	11/22/80
10. REVISED SEWER TO MATCH NEW	11/22/80
11. REVISED SEWER TO MATCH NEW	11/22/80
12. REVISED SEWER TO MATCH NEW	11/22/80
13. REVISED SEWER TO MATCH NEW	11/22/80
14. REVISED SEWER TO MATCH NEW	11/22/80
15. REVISED SEWER TO MATCH NEW	11/22/80
16. REVISED SEWER TO MATCH NEW	11/22/80
17. REVISED SEWER TO MATCH NEW	11/22/80
18. REVISED SEWER TO MATCH NEW	11/22/80
19. REVISED SEWER TO MATCH NEW	11/22/80
20. REVISED SEWER TO MATCH NEW	11/22/80
21. REVISED SEWER TO MATCH NEW	11/22/80
22. REVISED SEWER TO MATCH NEW	11/22/80
23. REVISED SEWER TO MATCH NEW	11/22/80
24. REVISED SEWER TO MATCH NEW	11/22/80
25. REVISED SEWER TO MATCH NEW	11/22/80
26. REVISED SEWER TO MATCH NEW	11/22/80
27. REVISED SEWER TO MATCH NEW	11/22/80
28. REVISED SEWER TO MATCH NEW	11/22/80
29. REVISED SEWER TO MATCH NEW	11/22/80
30. REVISED SEWER TO MATCH NEW	11/22/80
31. REVISED SEWER TO MATCH NEW	11/22/80
32. REVISED SEWER TO MATCH NEW	11/22/80
33. REVISED SEWER TO MATCH NEW	11/22/80

CITY OF RIVERSIDE, CALIFORNIA
 PUBLIC WORKS DEPARTMENT
 APPROVED BY: *[Signature]* DATE: 2/22/80
 DIRECTOR OF PUBLIC WORKS
 CHIEF PUB. WKS. ENGR. DATE: 2/22/80

SEWER PLAN & PROFILE
 TRACT NO. 6301-6
 CREIGHTON ST.
 SCALE: HORIZ. 1"=40' VERT. 1"=8'

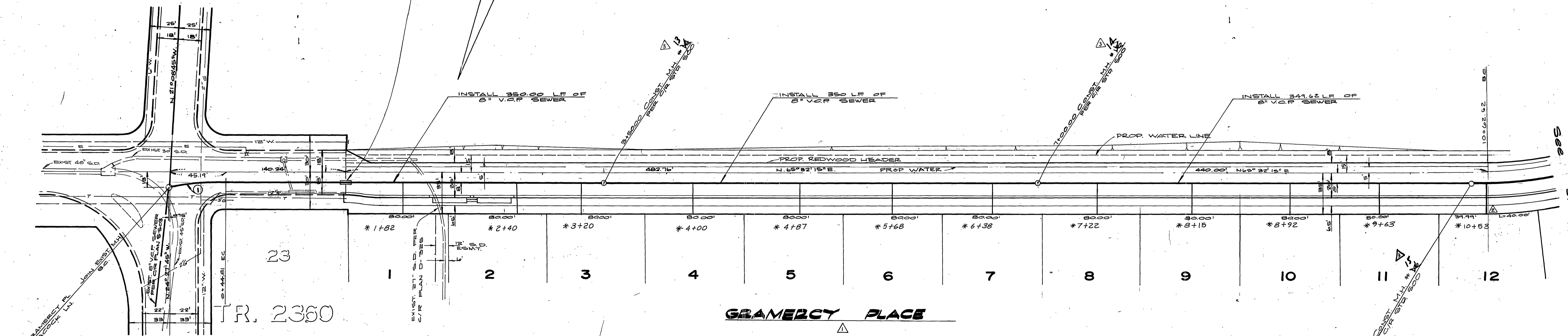
ACCOUNT No. 77-168
 DRAWING NUMBER
 S-1234
 SHEET 5 OF 7
 77-168



NOTE:
CONTRACTOR TO VERIFY
ELEVATION PRIOR TO CONSTRUCTION.

PEACOCK
LANE

ENCASE SEWER MAIN AND WATER
MAIN FOR STD. C.W.D.-022 &
C.W.D.-028.



TR. 2360

GRAMERCY PLACE

NOTE:
SEE SHEET 1 FOR GENERAL NOTES

BENCH MARK:

BRASS DISC IN 12" CONC. MONUMENT SW. CORNER OF GRAMERCY & SIERRA
SIDEWALK PLANTER. ON BACK OF CURB AT THE N.W. END OF
CITY S.M. F.I.A. ELEV. # 804.887

CURVE DATA			
No.	A	L	T
1	12° 50' 19"	200.00'	44.81' 22.50'

PLANS CHECKED AND FOUND TO
COMPLY WITH CITY OF RIVERSIDE
REQUIREMENTS:
BY: *John A. Smith* 2/15/80
C.E. ENGINEERING DATE

CITY OF RIVERSIDE
DOMESTIC SYSTEM
BY: *Red Rant* 1/24/80
CITY UTILITIES ENGINEER, WATER DATE

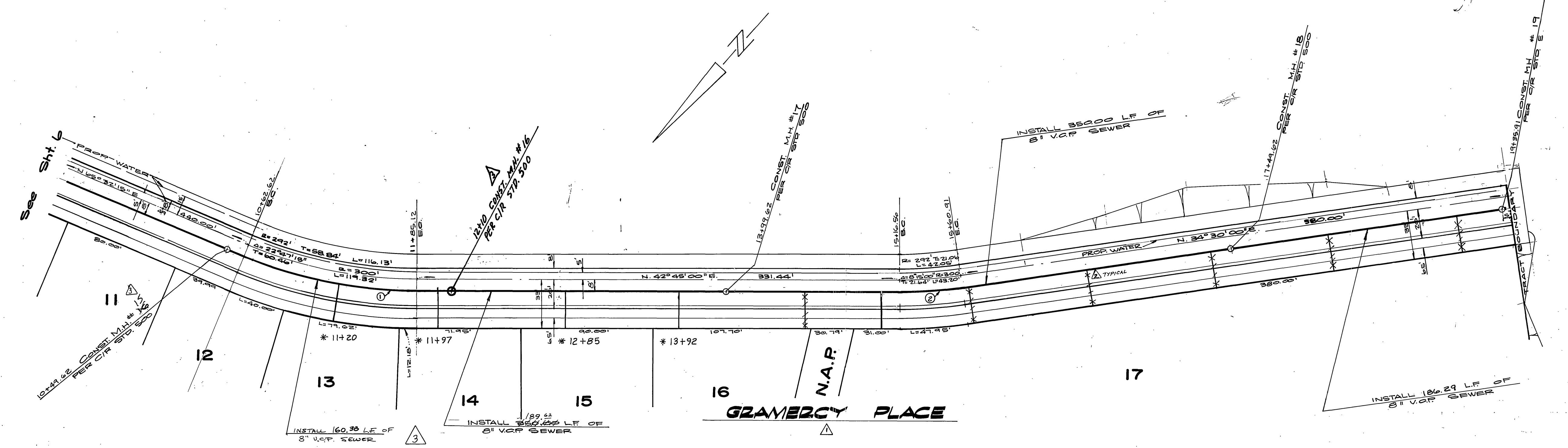
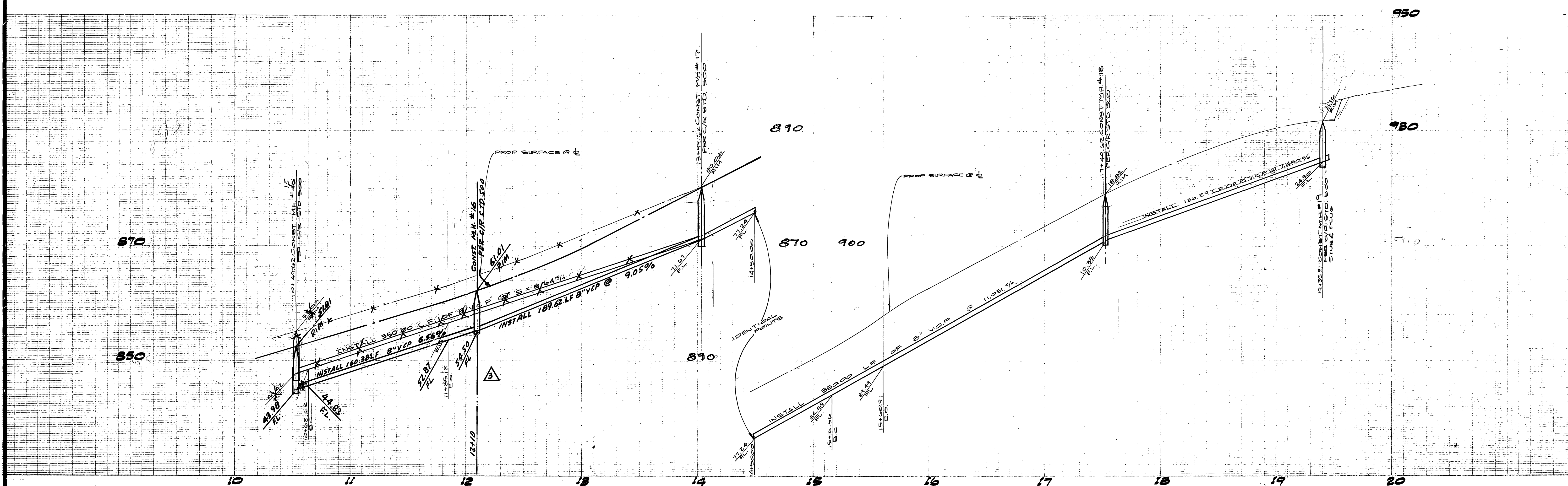
ALBERT A. WEBB ASSOCIATES
CIVIL ENGINEERS
RIVERSIDE, CALIFORNIA
APPROVED BY: *X. Michael Gail* DATE 1-7-80
R.E. No. 30260

MARK	REVISIONS	APPR.	DATE
△	REVISED SEWER GRADES TO MEET REVISED ST. GRADES 817.84 REL. OF	<i>W.K.C.</i>	1/22/80
△	REVISED TRACT NUMBER & LATERAL	<i>W.K.C.</i>	1/22/80
△	REVISED LOTS & NOS. (1-18)	<i>W.K.C.</i>	1/22/80

CITY OF RIVERSIDE, CALIFORNIA
PUBLIC WORKS DEPARTMENT
APPROVED BY: *W.K.C.* DATE 2/22/80
PRINCIPAL ENGINEER
TRAFFIC DIVISION
CHIEF PUB. WKS. ENGR. DATE 2/22/80

SEWER PLAN & PROFILE
TRACT NO. 6301-7
GRAMERCY PLACE
SCALE: HORIZ. 1"=40', VERT. 1"=4'

ACCOUNT No. 77-168
DRAWING NUMBER
S-1234
SHEET 6 OF 7
77-168A



CURVE DATA			
NO.	Δ	R	T
1	22° 47' 15"	308.00'	62.07'
2	8° 15' 00"	308.00'	22.21'

NOTE:
SEE SHEET 1 FOR GENERAL NOTES

BENCH MARK:
BRASS DISC IN 12" CONC. MONUMENT S.W. CORNER OF GRAMERCY & SIERRA VISTA. ON BACK OF CURB AT THE N.W. END OF SIDEWALK PLANTED. CITY B.M. FI-A ELEV. = 824.887

PLANS CHECKED AND FOUND TO COMPLY WITH CITY OF RIVERSIDE REQUIREMENTS!
 BY: *John A. Ste...* 4/5/80
 C.E. ENGINEERING DATE

CITY OF RIVERSIDE DOMESTIC SYSTEM
 BY: *Fred...* 3/28
 SUPERVISOR ENGINEER DATE

ALBERT A. WEBB ASSOCIATES
 CIVIL ENGINEERS
 RIVERSIDE, CALIFORNIA
 APPROVED BY: *R. Michael...* DATE 1-7-80
 R.E. No. 32266

REVISIONS	DATE	APPROVED BY
REVISED SEWER GRADE TO MEET REVISED ST. GRADES - PLUMBING	1/7/80	<i>[Signature]</i>
REVISED TRACT NUMBERS & LATERALS	1/7/80	<i>[Signature]</i>
REVISED LOTS & NOS (1-81)	1/7/80	<i>[Signature]</i>

CITY OF RIVERSIDE, CALIFORNIA
 PUBLIC WORKS DEPARTMENT
 APPROVED BY: *[Signature]* BY DATE: 2/22/80
 PRINCIPAL ENGINEER
 PARK DEPARTMENT
 TRAFFIC DIVISION
 CHIEF PUB. WKS. ENGR. DATE: 2/22/80

SEWER PLAN & PROFILE
 TRACT NO. 6301-7
 GRAMERCY PLACE
 ACCOUNT No. 77-168
 DRAWING NUMBER
 S-1234
 SHEET 7 OF 7
 SCALE: HORIZ. 1" = 40' VERT. 1" = 5'