

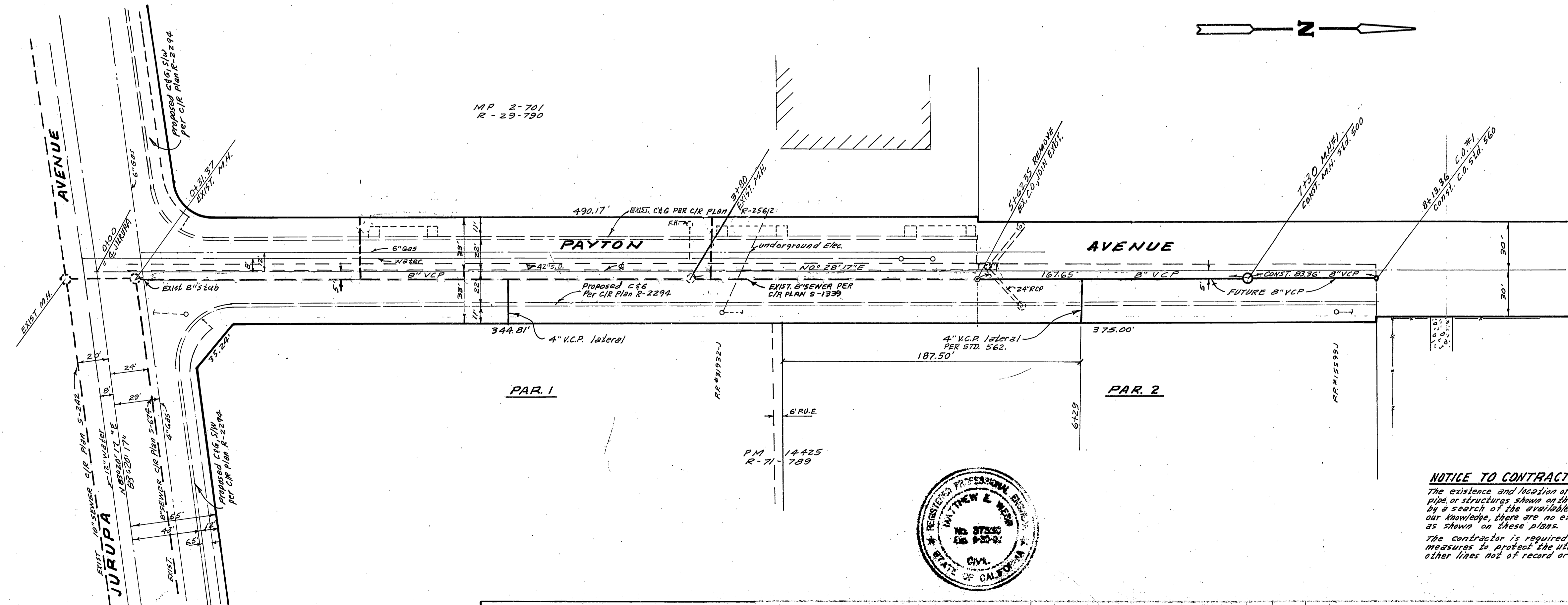
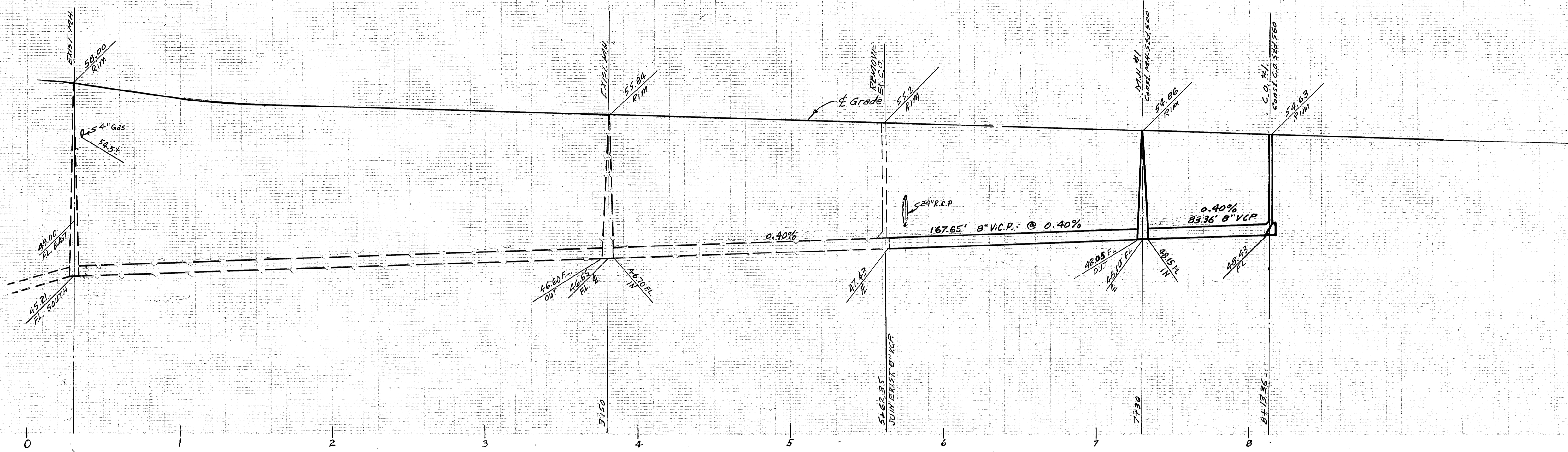
765

755

745

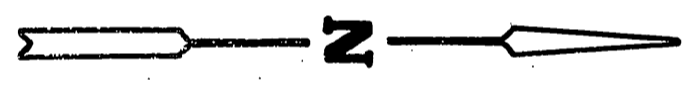
755

745



GENERAL NOTES

1. The private engineer signing these plans is responsible for the accuracy and acceptability of the work herein. In the event of discrepancies arising during construction, the private engineer shall be responsible for determining an acceptable solution and revising the plans for approval by the City.
2. It shall be the responsibility of the contractor to clear the right of way in accordance with the provisions of law as it affects each utility including irrigation lines and appurtenances and at no cost to the City.
3. Construction shall be in accordance with the City of Riverside, Department of Public Works, Standard Drawings, Std. Drawing #10 to the Standard Specifications for Public Works Construction, current Edition.
4. Location of laterals to be determined in the field at the direction of the owner. Avoid conflict with proposed and/or existing facilities.
5. Contractor is to verify existing sewer location/elevation prior to construction.
6. The sewer contractor shall adjust manholes to final grade after paving is completed.
7. A plug shall be installed and will remain in place where the new sewer connects, with the existing sewer until the new sewer is accepted by the City.
8. The contractor shall call in a location request to underground service alert (u.s.a.), Phone No. 1-800-422-4133, two working days before digging. No construction permit will be issued by the Public Works Department involving excavation for underground facilities unless the applicant has been provided an inquiry identification number by U.S.A.
9. No finished floor elevation shall be less than 4' above the sewer flow line at point of connection without having a proper backwater valve installed in the lateral.



NOTICE TO CONTRACTOR

The existence and location of any underground utility pipe or structures shown on these plans are obtained by a search of the available records. To the best of our knowledge, there are no existing utilities except as shown on these plans.

The contractor is required to take due precautionary measures to protect the utilities lines shown and any other lines not of record or not shown on these plans.

BENCH MARK: Elev. 788.314

C.R. B.M. #4-A-A, P.K. nail 4 1/2" in base of St. Light on N. Side Jurupa Ave. 40' W of Rear R/R Spur.



SD. CALIF GAS CO.
 APPROVED BY: *RR Baughman* DATE: 3-31-89
 CITY OF RIVERSIDE PUBLIC UTILITIES, ELEC.
 APPROVED BY: *Sam Cordelucci* DATE: 5-15-89
 CITY OF RIVERSIDE WATER SYSTEM
 APPROVED BY: *Sam Cordelucci* DATE: 5-15-89

ALBERT A. WEBB ASSOCIATES
 CIVIL ENGINEERS
 RIVERSIDE, CALIFORNIA
 APPROVED BY: *Matthew E. Will* DATE: 3/15/89
 RE NO. 37385
 W-77-270 FOR Sam Cordelucci F.B. 1003

CITY OF RIVERSIDE, CALIFORNIA
 DEPARTMENT OF PUBLIC WORKS
 APPROVED BY: *Matthew E. Will* DATE: 3/15/89
 TRAFFIC DIVISION
 SUPERVISOR: *W.A. G. 630*
 DATE: 6/30/89

SEWER PLAN & PROFILE
PAYTON AVENUE
 EAST SIDE NORTH OF JURUPA AVE.
 R-71-789
 ACCOUNT NO. DRAWING NUMBER
 S-1245
 SHEET 1 OF 1
 77-270-B
 INDEXED 8-8-89