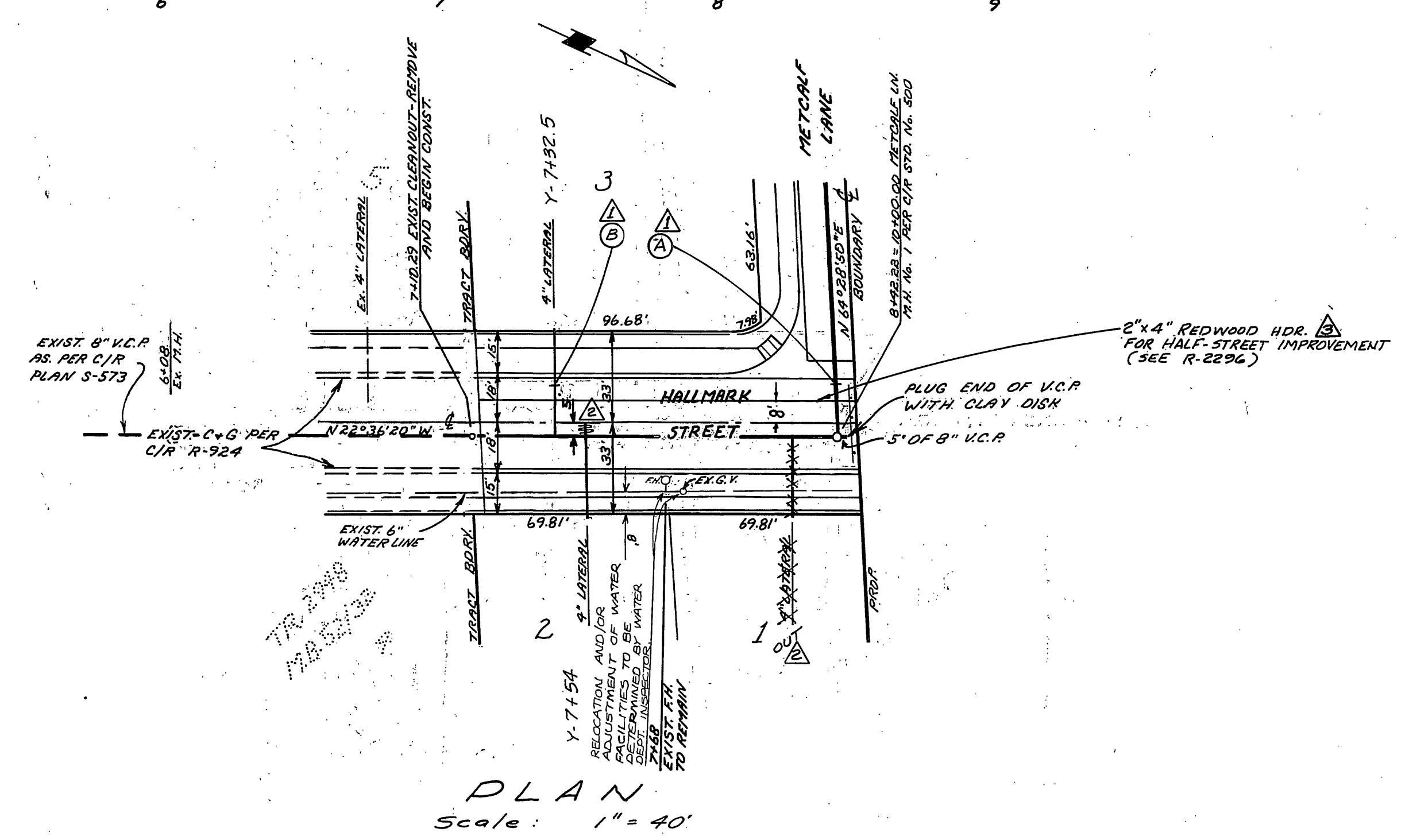
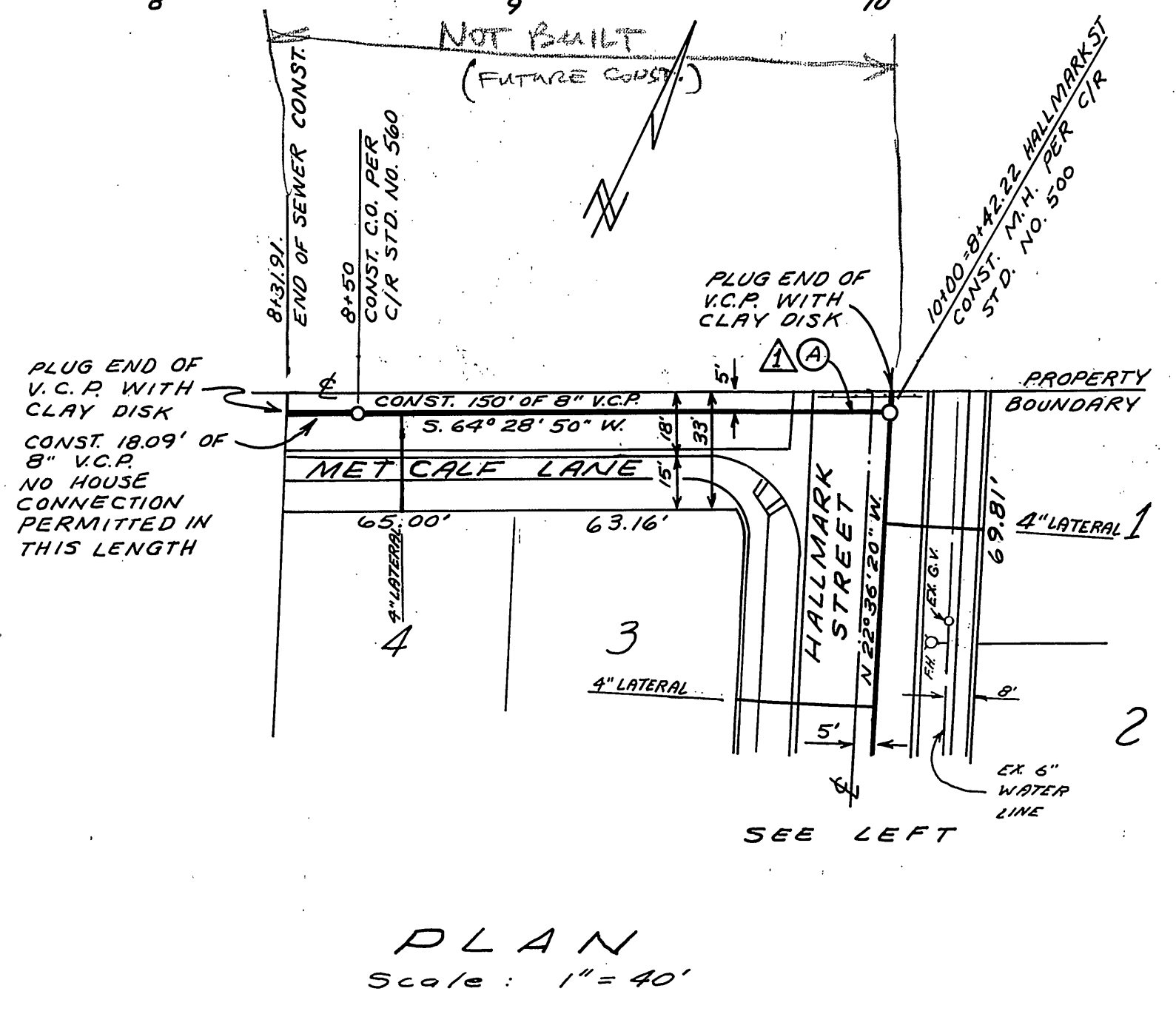


**PROFILES**  
 SCALE: HORIZ. 1" = 40'  
 VERT. 1" = 4'

**BENCH MARK**  
 BK. NAIL IN SOUTHWESTERLY CURB RETURN  
 AT CAMPBELL & LA SIERRA. BENCH MARK  
 NO. 62-B. ELEV. 771.04



**PLAN**  
 Scale: 1" = 40'



**PLAN**  
 Scale: 1" = 40'

**GENERAL NOTES**

- CONSTRUCTION SHALL BE IN ACCORDANCE WITH THE CITY OF RIVERSIDE DEPT. OF PUBLIC WORKS, STANDARD DRAWINGS, AND STANDARD SPECIFICATIONS OF PUBLIC WORKS CONSTRUCTION, 1976 EDITION.
- IT SHALL BE THE RESPONSIBILITY OF THE CONTRACTOR TO CLEAR THE RIGHT OF WAY IN ACCORDANCE WITH THE PROVISIONS OF THE LAW AS IT AFFECTS EACH UTILITY INCLUDING IRRIGATION LINES AND APPURTENANCES, AND AT NO COST TO THE CITY.
- JOINTS IN VITRIFIED CLAY PIPE SEWERS SHALL CONFORM TO A.S.T.M. STD. C-425-60 T, OR THE LATEST REVISION THEREOF.
- PIPE SHALL BE BEDDED PER CASE II, STD. DWG. NO. 452, UNLESS OTHERWISE SPECIFIED ON PLAN.
- LOCATION OF WYES AND LATERALS TO BE DETERMINED IN THE FIELD.
- ALL STUBS AND LATERALS TO BE CONSTRUCTED IN ACCORDANCE WITH STD. DWG. 562. STUBS SHALL BE PLUGGED AND CAPPED.
- THE PRIVATE ENGINEER SIGNING THESE PLANS IS RESPONSIBLE FOR ASSURING THE ACCURACY AND ACCEPTABILITY OF THE WORK HEREON. IN THE EVENT OF DISCREPANCIES ARISING DURING CONSTRUCTION, AS A RESULT OF ERRORS OR OMISSIONS, THE PRIVATE ENGINEER SHALL BE RESPONSIBLE FOR DETERMINING AN ACCEPTABLE SOLUTION AND REVISING THE PLANS FOR APPROVAL BY THE CITY.
- CONTRACTOR IS TO VERIFY EXISTING SEWER ELEVATION PRIOR TO CONSTRUCTION.
- THE SEWER CONTRACTOR SHALL ADJUST MANHOLES TO FINAL GRADE AFTER PAVING IS COMPLETED.
- A PLUG SHALL BE INSTALLED AND WILL REMAIN IN PLACE WHERE THE NEW SEWER CONNECTS WITH THE EXISTING SEWER UNTIL THE NEW SEWER IS ACCEPTED BY THE CITY.

- ⊙A CONST. 10'-8" VCP AND PLUG END WITH CLAY DISK.
- ⊙B CONST. 10'-4" LATERAL PER CITY OF RIVERSIDE STD. NO. 562.
- ⊙ PARTIAL CONSTRUCTION OF SEWER LINE ALL ON HALLMARK ST AS REVISED ON PLAN.

AKERS & MUSSER - CIVIL ENGR.  
 AND LAND SURVEYING  
 P.O. BOX 306, PERRIS, CA. 92570-0306  
 APPROVED: GARY L. AKERS  
 RCE 23713

APPROVED BY:  
 RST DATE 9/2/80  
 Fred Rant  
 WATER SYSTEMS MANAGER  
 WATER DIVISION

LYNN A. TERRY & ASSOCIATES  
 CIVIL ENGINEERING  
 CORONA-NORCO, CALIFORNIA  
 APPROVED: L.A.T. DATE 7/6/77  
 R.C.E. 19640

DESIGNED BY L.A.T. DRAWN BY M.L.L. CHECKED BY L.A.T.

CITY OF RIVERSIDE, CALIFORNIA  
 DEPARTMENT OF PUBLIC WORKS  
 APPROVED BY: [Signature]  
 DIRECTOR OF PUBLIC WORKS  
 DATE 4/19/80

\* AS BUILT 3-14-85 BRET!  
 INDEXED BY BLD  
 PROJECT NO. S-1246  
 SHEET 1 OF 1  
 FILE NO.  
 HORIZ. SCALE: 1" = 40' VERT. SCALE: 1" = 4'