

**INDEX**  
No Scale

**GENERAL NOTES**

1. The private engineer signing these plans is responsible for the accuracy and acceptability of the work hereon. In the event of discrepancies arising during construction, the private engineer shall be responsible for determining an acceptable solution and revising the plans for approval by the City.
2. It shall be the responsibility of the contractor to clear the right of way in accordance with the provisions of law as it affects each utility including irrigation lines and appurtenances and at no cost to the city.
3. Construction shall be in accordance with the City of Riverside, Dept. of Public Works, Standard Drawings, and the Standard Specifications for Public Works Construction, 1979 Edition.
4. Location of laterals to be determined in the field at the direction of the owner. Avoid conflict with proposed and/or existing facilities.
5. Contractor is to verify existing sewer location and elevation prior to construction.
6. The sewer contractor shall adjust manhole rims to final grade after paving is completed.
7. A plug shall be installed and remain in place where the new sewer connects with the existing sewer until the new sewer is accepted by the City.

**NOTICE TO CONTRACTOR**

The existence and location of any underground utility pipes or structures shown on these plans are obtained by a search of the available records. To the best of our knowledge, there are no existing utilities except as shown on these plans.

The contractor is required to take due precautionary measures to protect the utility lines shown and any other lines not of record or not shown on these plans.

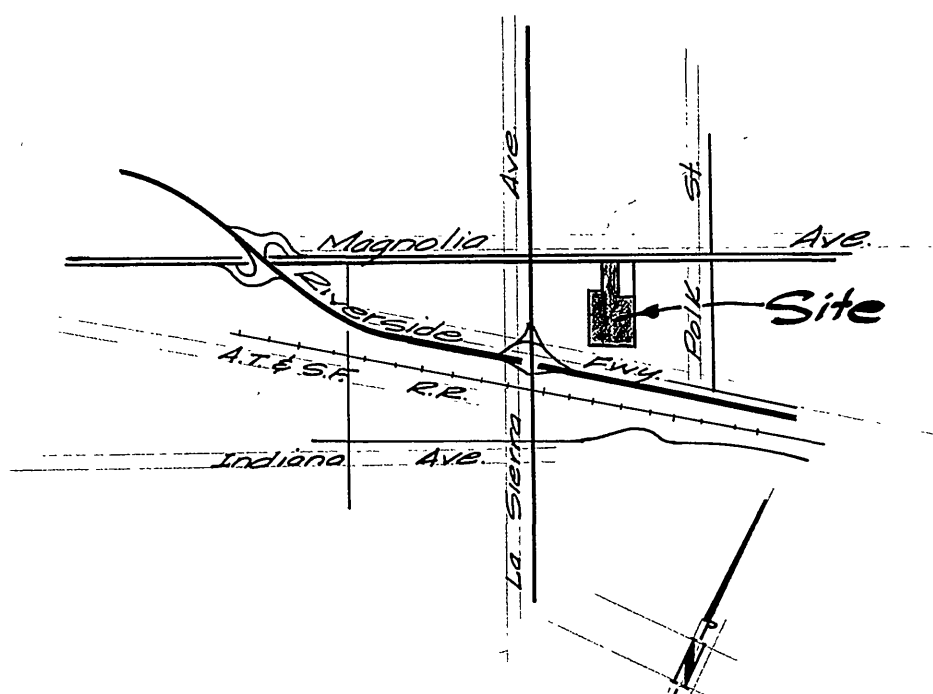
**BENCH MARK**

SEPT. 4, 1979, (A. A. WEBB FB 1032/45) A LEVEL RUN WAS ESTABLISHED BETWEEN CITY BENCH MARK 601-25-68 (NEAR TYLER AND INDIANA) AND CITY BENCH MARK 601-27-68 (AT POLK AND MAGNOLIA).

ELEVATION 726.665 WAS THE STARTING ELEVATION FOR BENCH MARK 601-27-68. AN ELEVATION OF 717.141 WAS ESTABLISHED FOR CITY BENCH MARK 601-27-68 VS. A RECORD ELEVATION OF 717.161 FOR THIS POINT. AT THIS TIME A TEMPORARY BENCH MARK HAVING AN ELEVATION OF 726.096 WAS ESTABLISHED ON A CHISELED SQUARE ON TOP OF CURB AT SCR AT S.E. CURB RETURN AT POLK AND WHITE OAK.

AUGUST 27, 1979, (A. A. WEBB FB 1046/99) A LEVEL RUN WAS ESTABLISHED, USING AN ELEVATION OF 717.161 FOR BENCH MARK 601-27-68. SEPTEMBER 5, 1980, (A. A. WEBB FB 1046/157) A LEVEL RUN WAS ESTABLISHED, USING AN ELEVATION OF 726.096 ON THE TEMPORARY BENCH MARK DESCRIBED ABOVE, WHICH ESTABLISHED AN ELEVATION OF 716.814 FOR BENCH MARK 601-27-68 VS. THE RECORD ELEVATION OF 717.161.

FROM THIS IT MAY BE SEEN THAT THE RUN ESTABLISHED IN AUGUST 1979 WAS BASED UPON A DATUM WHICH WAS 0.347 TOO HIGH (717.161 ELEVATION ASSIGNED MINUS 716.814 ELEVATION DETERMINED IN SEPTEMBER 1980). THEREFORE, YOU MUST SUBTRACT 0.347, OR 0.35, FROM ALL ELEVATIONS SHOWN ON THIS PLAN TO OBTAIN 1970 PRECISE DATUM.



**LOCATION MAP**  
No Scale

*Rest with*  
City of Riverside  
Domestic & Irrigation  
Systems  
  
*Fred Lantz*  
Water Systems Manager  
7/14/80  
Date

ALBERT A. WEBB ASSOCIATES  
CIVIL ENGINEERS  
RIVERSIDE, CALIFORNIA  
APPROVED BY *E. A. Webb* DATE 6/18/80  
R.E. No. 2876

MARK	REVISIONS	APPR.	DATE
DESIGNED BY <i>ECT</i>	DRAWN BY <i>ECT</i>	CHECKED BY <i>PA</i>	DATE

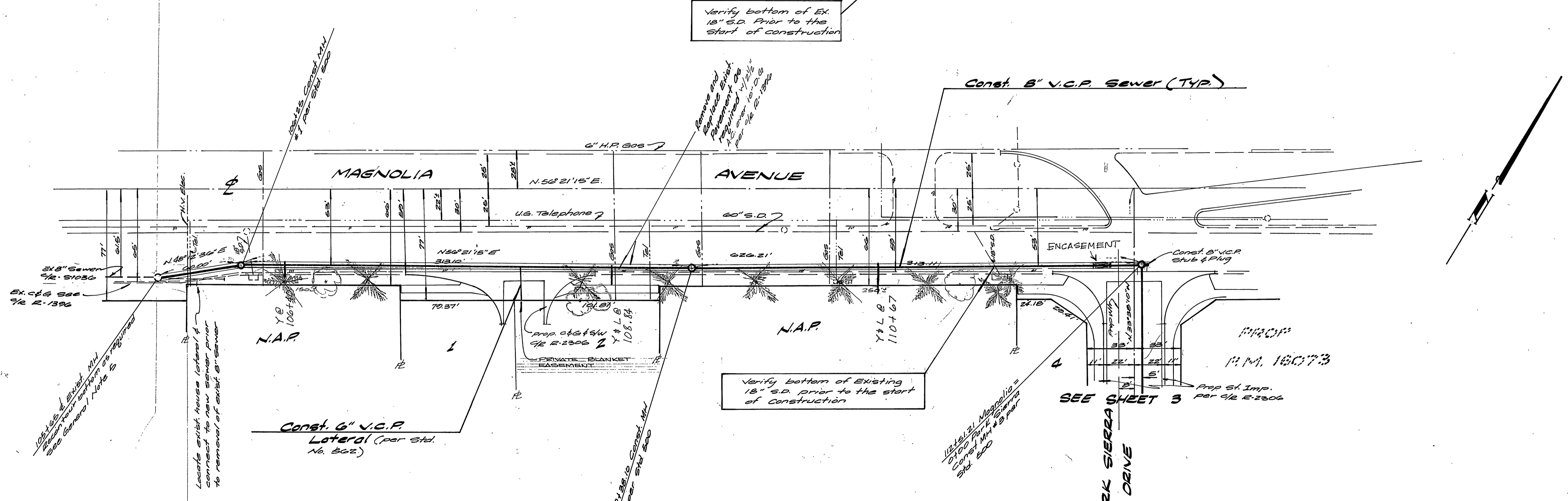
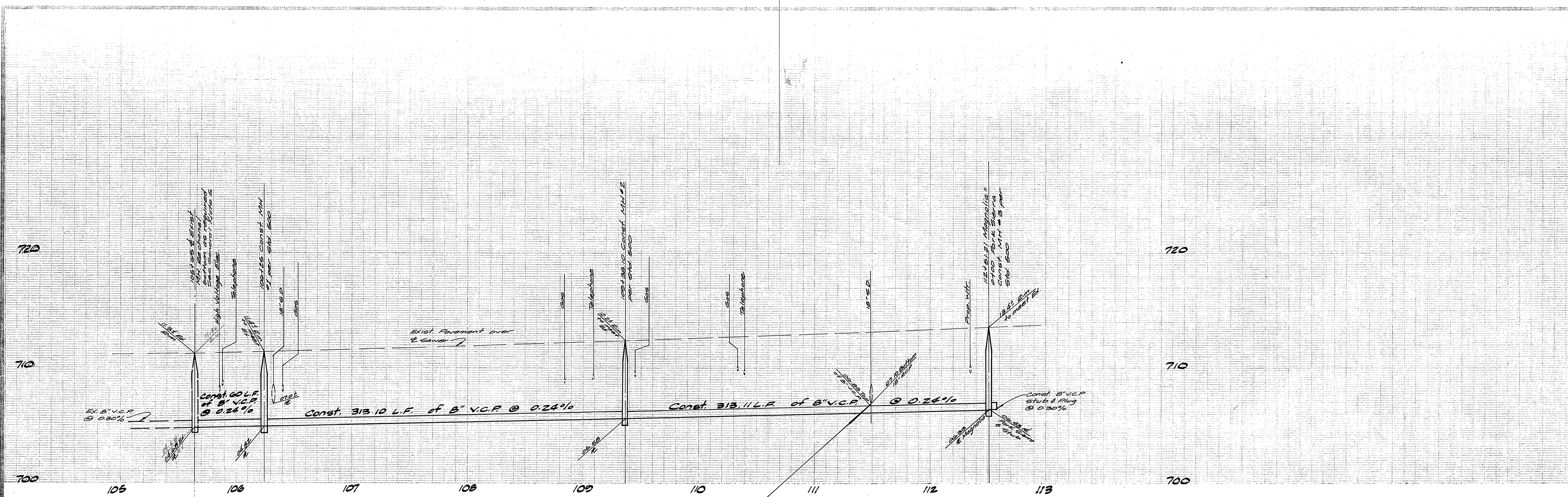
CITY OF RIVERSIDE, CALIFORNIA  
PUBLIC WORKS DEPARTMENT  
APPROVED BY *E. A. Webb* DATE 6/18/80  
PRINCIPAL ENGINEER  
PARK DEPARTMENT  
TRAFFIC DIVISION  
CHIEF PUB. WKS. ENGR. *ECT* DATE 7/14/80

**SEWER PLAN & PROFILE**  
**INDEX**  
R.M. No. 15817  
SCALE: As Shown

ACCOUNT No. 5-1251  
DRAWING NUMBER  
SHEET 1 OF 5  
70-215-B

\* AS BUILT 3-16-84 P&P!

INDEXED BLD



City of Riverside  
 Domestic & Irrigation Systems  
**Fred Lantz** 7/14/80  
 Water Systems Manager Date

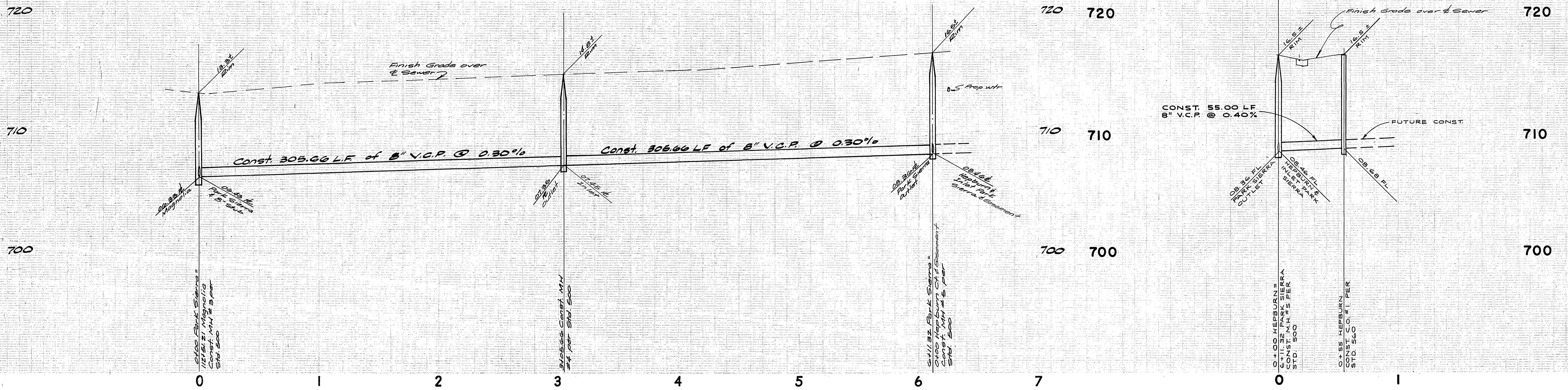
**BENCH MARK**  
 Brass disc in conc. stamped  
 601-27-68 flush with ground  
 80' S.W. from E Polk St. &  
 5' S.E. of Magnolia Ave.  
 Elevation: 716.814 (BASIS FOR  
 THIS PROJECT) VS RECORD ELEV.  
 OF 717.161. THEREFORE, SUBTRACT  
 0.35 FROM ALL ELEVATIONS  
 SHOWN TO OBTAIN 1970  
 PRECISE DATUM.

ALBERT A. WEBB ASSOCIATES CIVIL ENGINEERS RIVERSIDE, CALIFORNIA		CITY OF RIVERSIDE, CALIFORNIA DEPARTMENT OF PUBLIC WORKS	
APPROVED BY: <i>[Signature]</i>	DATE: 6/18/80	APPROVED BY: <i>[Signature]</i>	DATE: 7/14/80
R.E. No. 2876	DESIGNED BY: <i>[Signature]</i>	TRAFFIC DIVISION	PLANNING

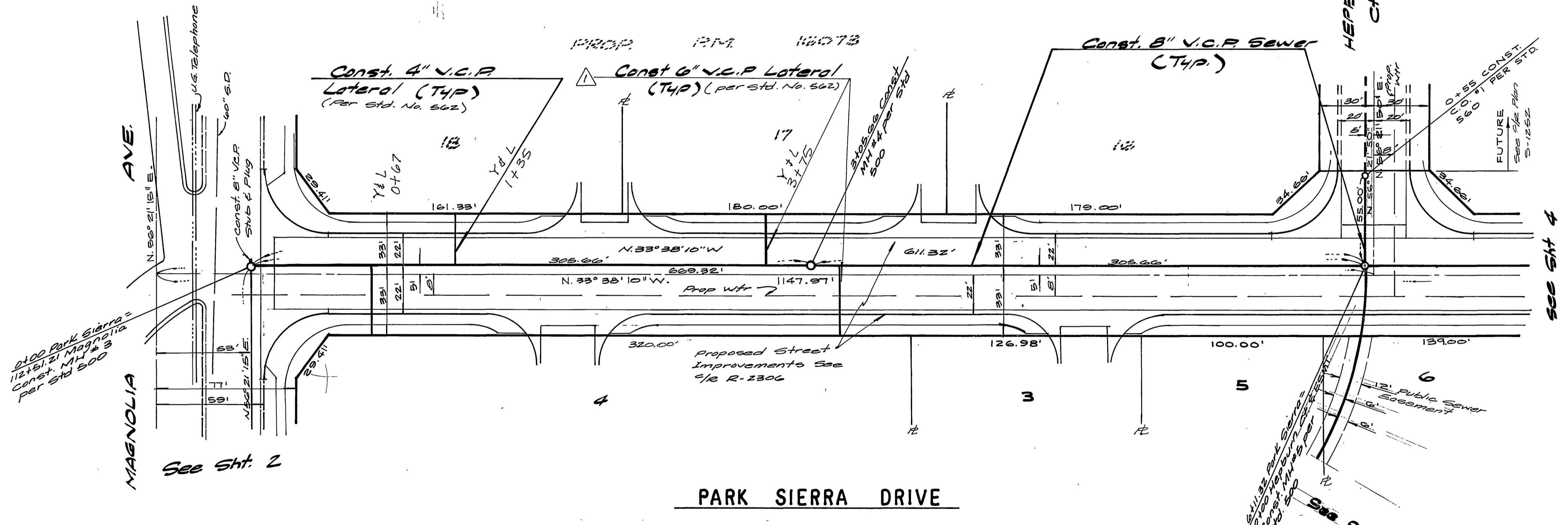
NOTE: See Sheet 1 for General Notes  
 For Exist. St. Improvements See 2/2 Plan R-1780  
 " " Sewer " " 2/2 Plan S-1030  
 " " S.D. " " 2/2 Plan D-243

\* AS BUILT 3-16-84 Prof!

INDEXED BLD	ACCOUNT No.
SEWER PLAN AND PROFILE	DRAWING NUMBER
MAGNOLIA AVENUE PARCEL MAP N <sup>o</sup> 15817	S-1251
SCALE: Horiz. 1"=40' Vert. 1"=4'	SHEET 2 OF 5
	70-215-B



PROFILE  
HEPBURN CT.

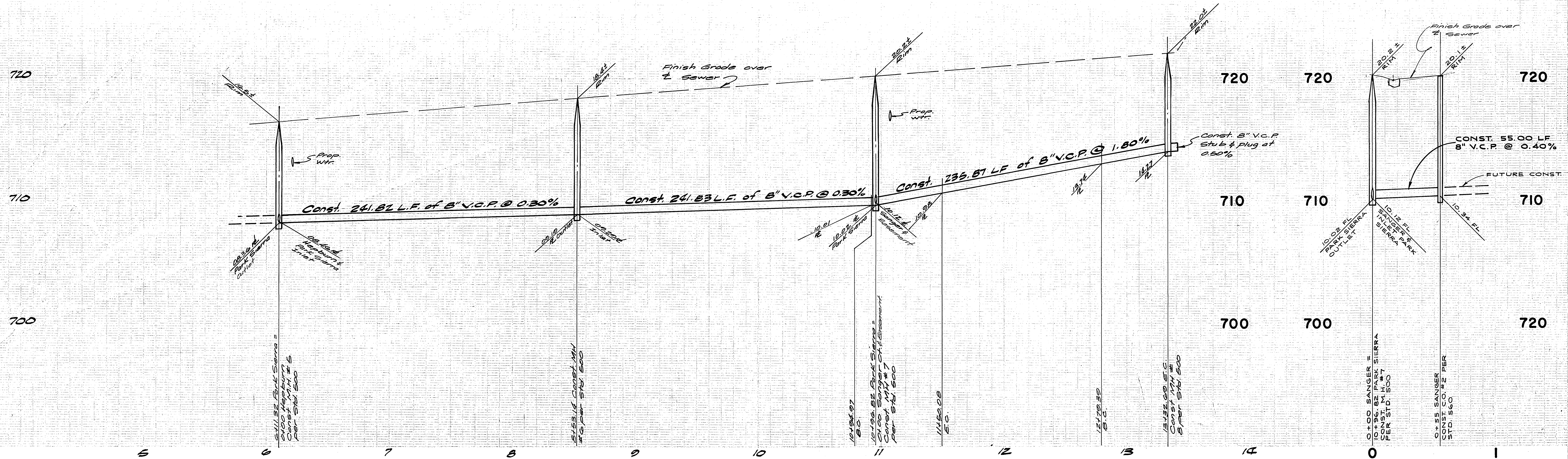


**BENCH MARK:**  
BRASS DISC IN CONC. STAMPED 601-27-68 FLUSH WITH GROUND  
281 S.W. FROM E. FOLK ST. & 9' S.E. OF E. MAGNOLIA AVE.  
ELEVATION: 716.814 (BASIS FOR THIS PROJECT) VS. RECORD ELEV.  
OF 717.161. THEREFORE, SUBTRACT 0.35 FROM ALL ELEVATIONS  
SHOWN TO OBTAIN 1970 PRECISE DATUM.

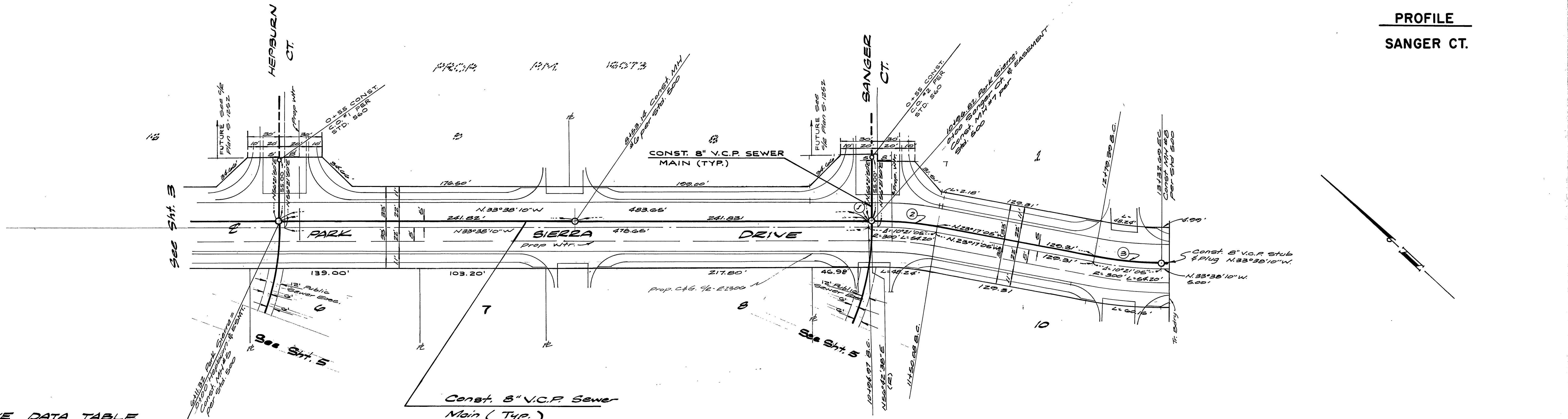
Note: For General Notes see sheet 1.

\* AS BUILT 3-10-84 Brier!

City of Riverside Domestic & Irrigation Systems Fred Lant Water Systems Manager 9/14/80 Date	ALBERT A. WEBB ASSOCIATES CIVIL ENGINEERS RIVERSIDE, CALIFORNIA APPROVED BY: <i>[Signature]</i> DATE: 6/13/80 R.E. No. 9812 W.D. 79-215 FOR: TFS F.B. 1042	CITY OF RIVERSIDE, CALIFORNIA DEPARTMENT OF PUBLIC WORKS APPROVED BY: <i>[Signature]</i> DATE: 12/1/80 DIRECTOR OF PUBLIC WORKS CHIEF P. W. ENGR. <i>[Signature]</i> DATE: 12/1/80 PLANNING	INDEXED RLD ACCOUNT No.
			SEWER PLAN & PROFILE PARK SIERRA DR. PARCEL MAP No 15817 SHEET 3 OF 5 79-215-B



**PROFILE  
SANGER CT.**



**CURVE DATA TABLE**

No.	Δ	R	L	T
①	0°20'48"	305.00'	1.85'	0.92'
②	10°00'17"	305.00'	53.26'	26.70'
③	10°21'05"	296.00'	53.30'	26.72'

**BENCH MARK**  
 Brass disc in conc. stamped  
 02127-65 flush with ground  
 80' S.W. from E. Park St &  
 9' S.E. of E. Magnolia Ave.  
 Elevation: 716.814 (BASIS FOR  
 THIS PROJECT) VS. RECORD  
 ELEV. OF 717.161. THEREFORE,  
 SUBTRACT 0.35 FROM ALL ELEV-  
 ATIONS SHOWN TO OBTAIN

*ASST MGR*  
 City of Riverside  
 Domestic & Irrigation Systems  
*Fred Land*  
 Water Systems Manager  
 7/14/10  
 Date

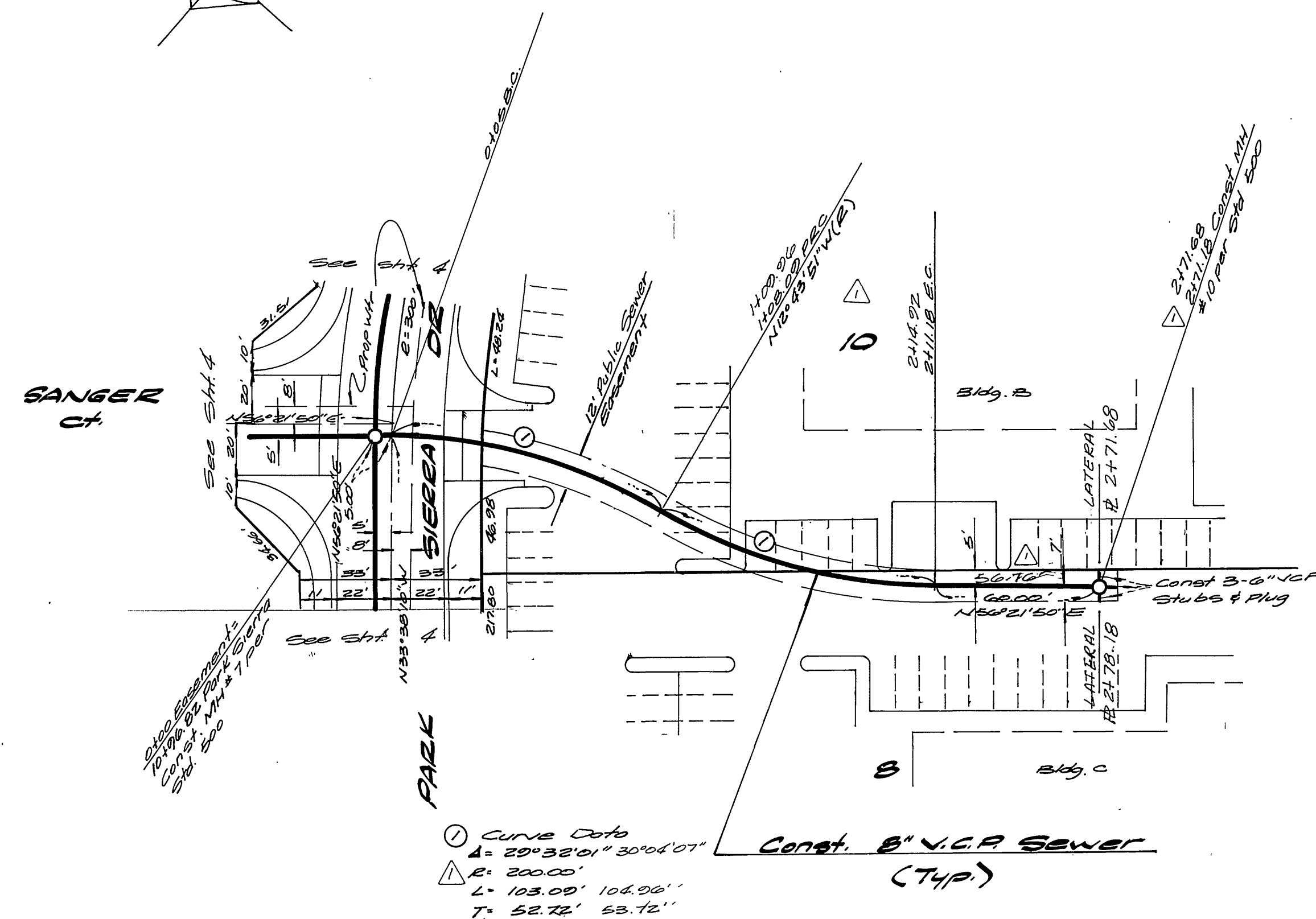
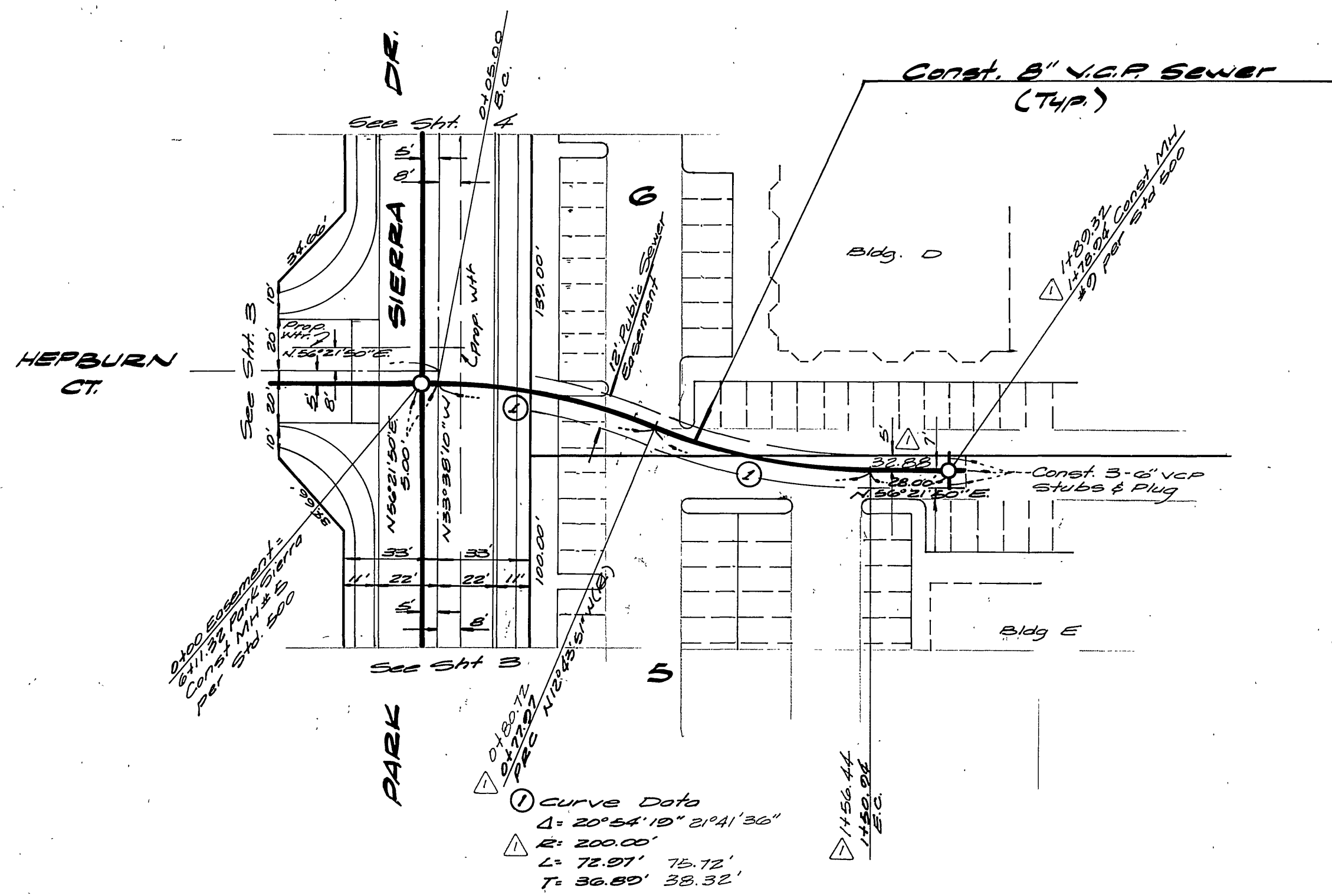
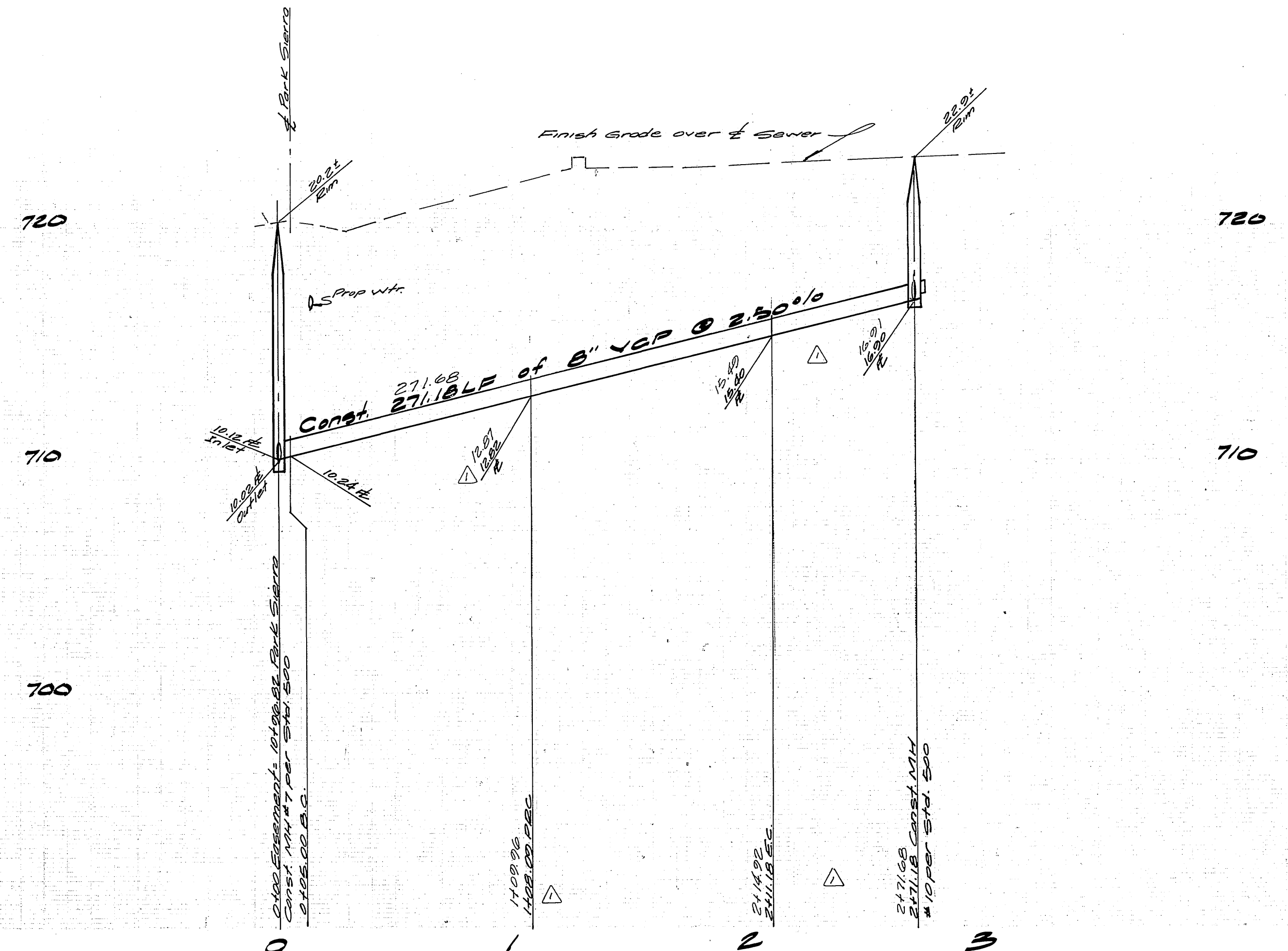
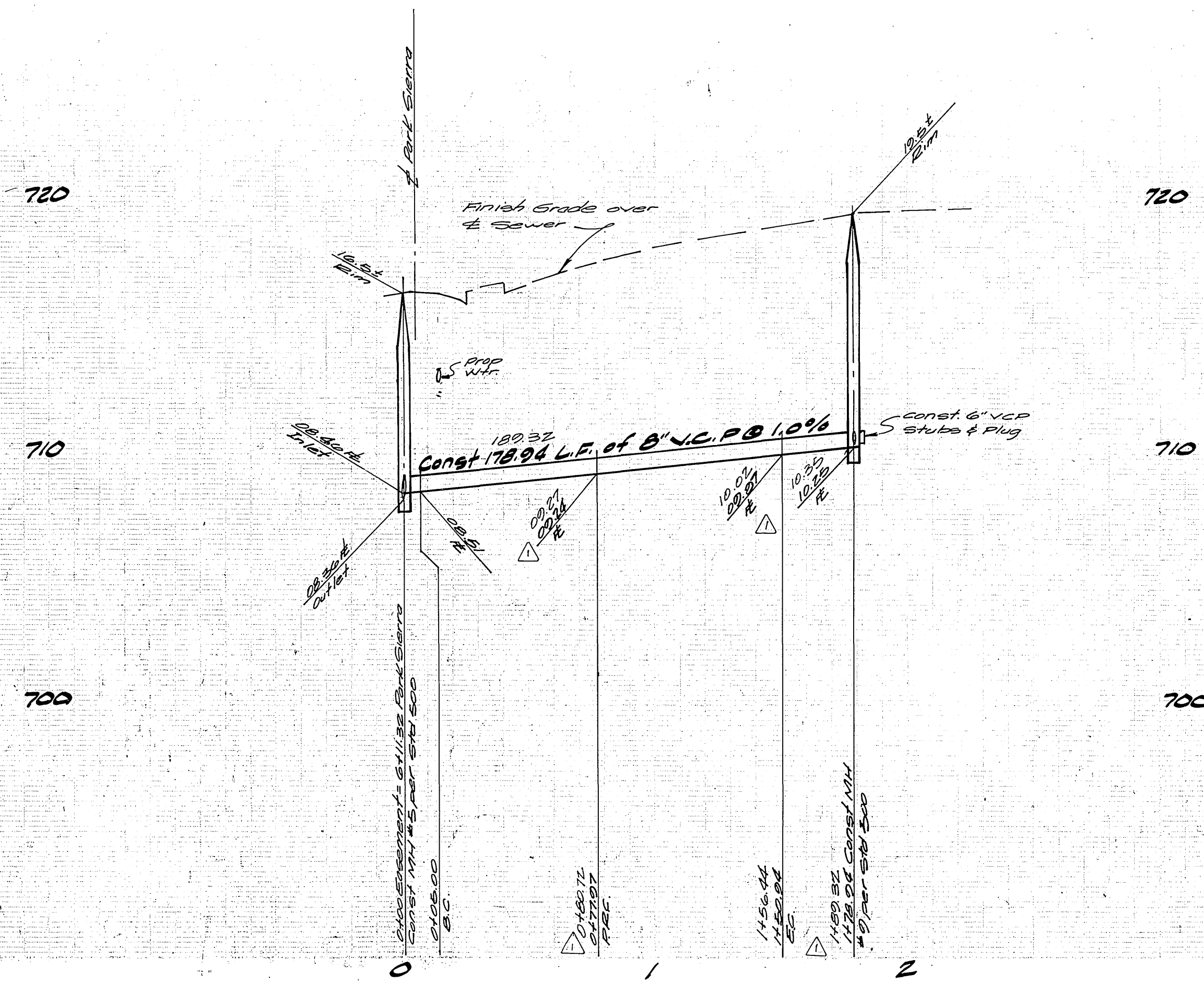
ALBERT A. WEBB ASSOCIATES  
 CIVIL ENGINEERS  
 RIVERSIDE, CALIFORNIA  
 APPROVED BY *[Signature]* DATE 6/18/80  
 P.E. No. 2872

Note: For General Notes see sheet 1

CITY OF RIVERSIDE, CALIFORNIA  
 DEPARTMENT OF PUBLIC WORKS  
 APPROVED BY *[Signature]* DATE 12/14/80  
 PRINCIPAL ENGINEER  
 TRAFFIC DIVISION  
 CHIEF P. W. ENGR.  
 PLANNING

**SEWER PLAN & PROFILE**  
 PARK SIERRA DRIVE  
 PARCEL MAP No. 15017  
 SCALE: Horiz: 1"=40' Vert: 1"=4'

INDEXED BLD  
 ACCOUNT No.  
 DRAWING NUMBER  
**S-1251**  
 SHEET **4** OF **5**  
**79-215-B**



Curve Data  
 Δ = 20° 54' 15" 2' 41' 36"  
 R = 200.00'  
 L = 72.91' 75.72'  
 T = 39.65' 38.32'

Curve Data  
 Δ = 29° 33' 01" 30' 04' 01"  
 R = 200.00'  
 L = 103.00' 104.98'  
 T = 52.72' 53.75'

Note: For General Notes see sheet 1.

\* AS BUILT 3-16-84 BRET!

**BENCH MARK**

Cross disc in conc. stamped  
 001-27-08 flush with ground 86'w.  
 of E Magnolia Ave. Elevation: 716.814  
 (Basis for this project) vs. Record  
 Elevation 717.161, therefore  
 subtract 0.35 from all elevations  
 shown to obtain 1970 precise  
 datum.

City of Riverside  
 Domestic & Irrigation Systems  
 Approved by: *Fred Lantz* 11/18/80  
 Water Systems Manager

ALBERT A. WEBB ASSOCIATES  
 CIVIL ENGINEERS  
 RIVERSIDE, CALIFORNIA  
 Approved by: *Albert Webb*  
 R.E. No. 9876  
 W.D. 70-215 FOR 745

DESIGNED BY: *BLT* DRAWN BY: *BLT* CHECKED BY: *PA*  
 DATE: 11-18-80

CITY OF RIVERSIDE, CALIFORNIA  
 DEPARTMENT OF PUBLIC WORKS  
 APPROVED BY: *F. P. ...*  
 DIRECTOR OF PUBLIC WORKS  
 DATE: 12/1/80

**SEWER PLAN & PROFILE**  
**EASEMENTS**  
**PARCEL MAP No. 15817**  
 SCALE: Horiz: 1" = 40' Vert: 1" = 4'

INDEXED BLD  
 ACCOUNT NO.  
 DRAWING NUMBER  
**3-1251**  
 SHEET **5** OF **5**  
**70-215-B**