

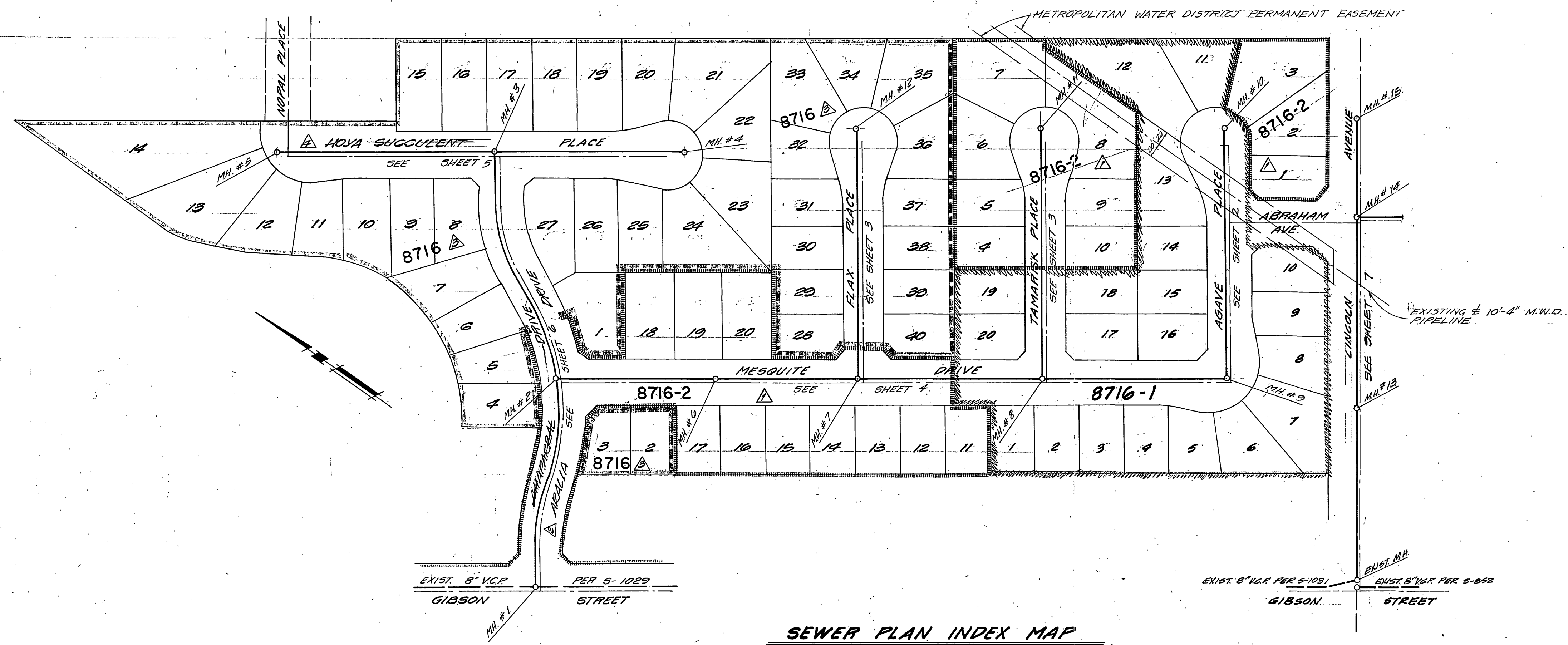
- GENERAL SEWER NOTES
- CONSTRUCTION SHALL BE IN ACCORDANCE WITH THE STANDARD SPECIFICATIONS FOR PUBLIC WORKS CONSTRUCTION, 1979 EDITION, AND CITY OF RIVERSIDE STANDARD DRAWINGS.
 - IT SHALL BE THE RESPONSIBILITY OF THE CONTRACTOR TO CLEAR THE RIGHT OF WAY IN ACCORDANCE WITH THE PROVISIONS OF THE LAW AS IT AFFECTS EACH UTILITY INCLUDING IRRIGATION LINES AND APPURTENANCES AND AT NO COST TO THE CITY.
 - THE PIPE SHALL BE BEDDED PER CASE I, STANDARD DRAWING NO. 452.
 - LOCATION OF WYES AND LATERALS TO BE DETERMINED AT THE TIME OF CONSTRUCTION AT THE DIRECTION OF THE OWNER. AVOID CONFLICT WITH PROPOSED AND/OR EXISTING FACILITIES.
 - ALL STUBS AND LATERALS TO BE CONSTRUCTED PER STANDARD DRAWING NO. 562. STUBS SHALL BE PLUGGED AND CAPPED.
 - MANHOLE FRAMES AND COVERS TO BE SET TO FINISH GRADE BY THE SEWER CONTRACTOR AFTER THE FINAL PAVING OF STREETS.
 - LATERALS TO BE 4" VCP AND EXTENDED TO THE PROPERTY LINE.
 - A PLUG SHALL BE INSTALLED AND WILL REMAIN IN PLACE WHERE THE NEW SEWER CONNECTS TO THE EXISTING SEWER UNTIL THE NEW SEWER IS ACCEPTED BY THE CITY.
 - CONTRACTOR IS TO VERIFY EXISTING SEWER ELEVATION PRIOR TO CONSTRUCTION.

NOTICE TO CONTRACTOR

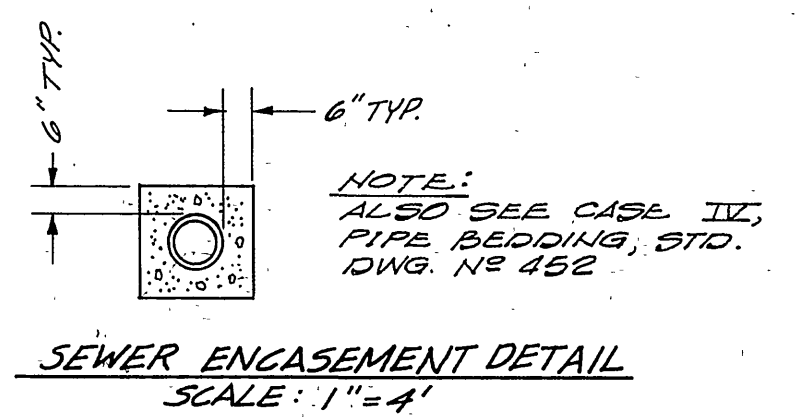
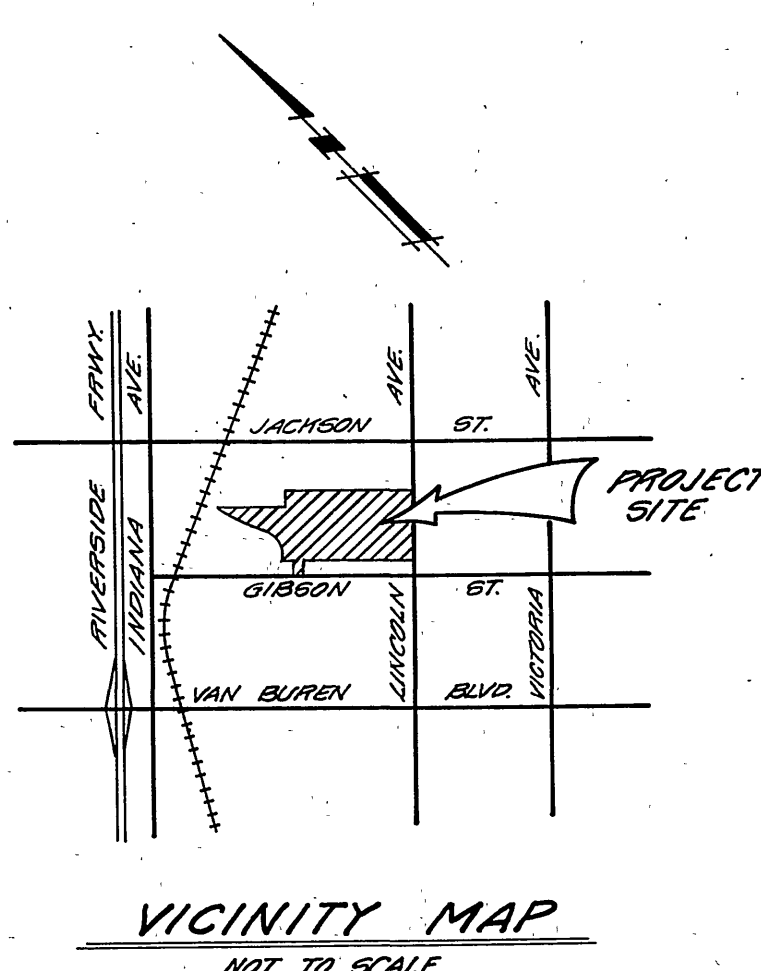
THE EXISTENCE AND LOCATION OF ANY UNDERGROUND UTILITY PIPES OR STRUCTURES SHOWN ON THESE PLANS ARE OBTAINED BY A SEARCH OF THE AVAILABLE RECORDS. TO THE BEST OF OUR KNOWLEDGE, THERE ARE NO EXISTING UTILITIES EXCEPT AS SHOWN ON THESE PLANS.

THE CONTRACTOR IS REQUIRED TO TAKE DUE PRECAUTIONARY MEASURES TO PROTECT THE UTILITY LINES SHOWN AND ANY OTHER LINES NOT OF RECORD OR NOT SHOWN ON THESE PLANS.

THE CONTRACTOR IS REQUIRED TO CALL METROPOLITAN WATER DISTRICT AT (213) 626-4282 EXT. 422, 2 DAYS PRIOR TO CONSTRUCTION ACROSS AQUEDUCT. ATTENTION: ART KNOOP.



SEWER PLAN INDEX MAP
SCALE: 1" = 100'



NOTICE

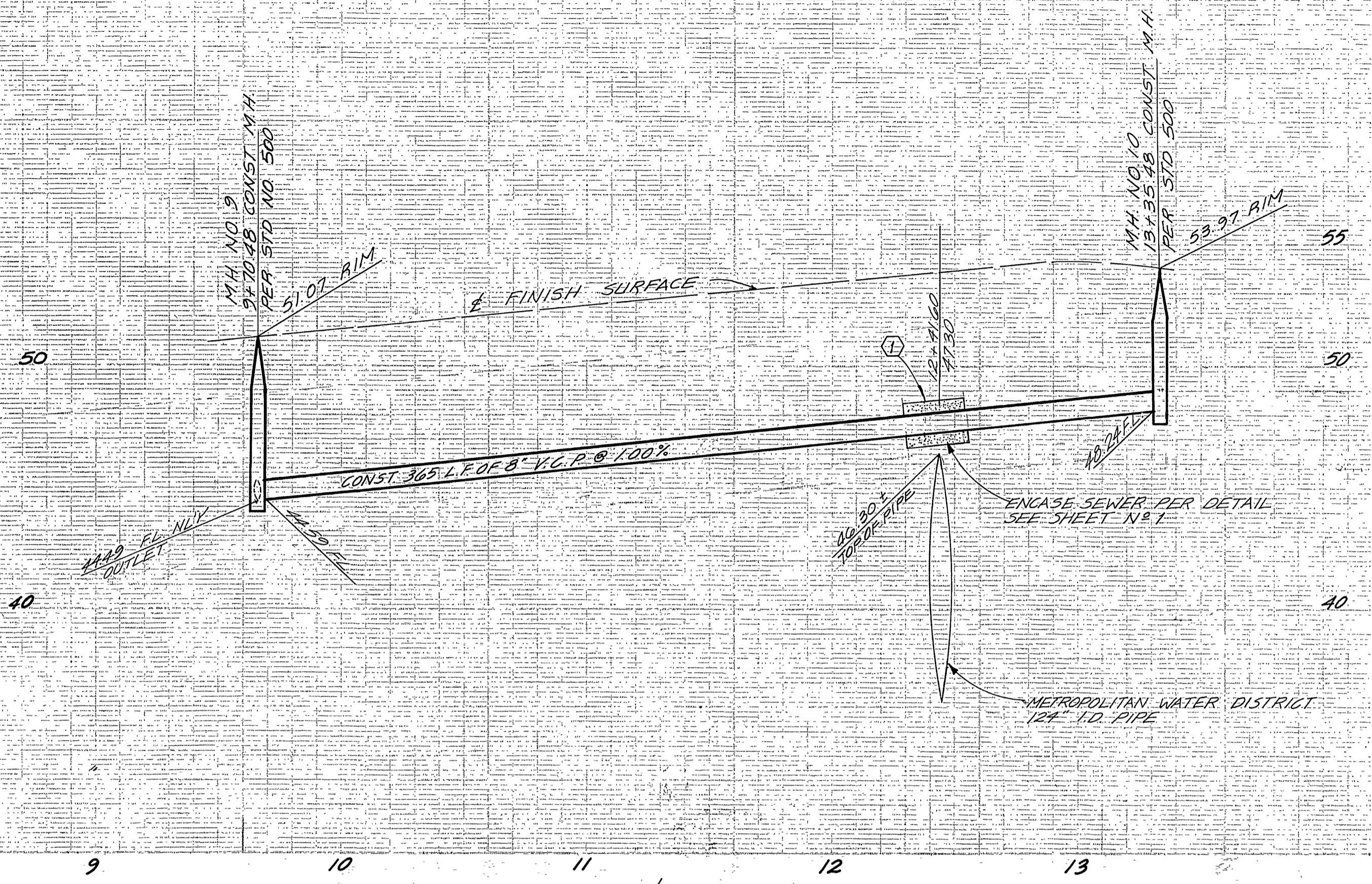
THE PRIVATE ENGINEER SIGNING THESE PLANS IS RESPONSIBLE FOR ASSURING THE ACCURACY AND ACCEPTABILITY OF THE WORK HEREON. IN THE EVENT OF DISCREPANCIES ARISING DURING CONSTRUCTION AS A RESULT OF ERRORS OR OMISSIONS, THE PRIVATE ENGINEER SHALL BE RESPONSIBLE FOR DETERMINING AN ACCEPTABLE SOLUTION AND REVISING THE PLANS FOR APPROVAL BY THE CITY.

BENCH MARK

CITY BENCHMARK NO. E4-1 P.K. NAIL AND TAG IN NORTHEAST CORNER OF CONCRETE GUTTER ON NORTHERLY SIDE VICTORIA AVENUE 300' WESTERLY OF JACKSON STREET. ELEVATION 871.412

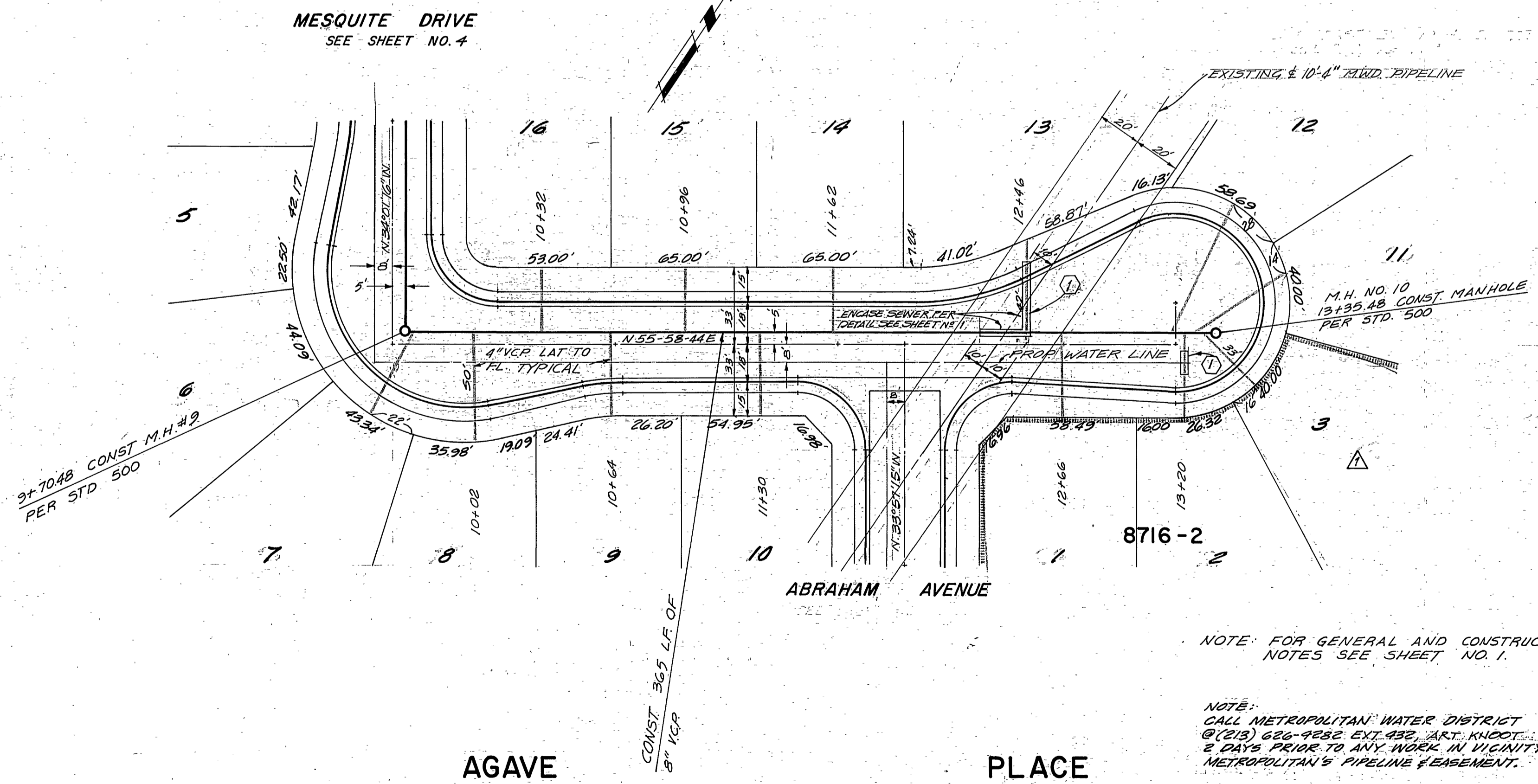
PHASE 1 & 2 ONLY.
* AS BUILT 3/14/84 BEET!

PLANS CHECKED AND FOUND TO COMPLY WITH CITY OF RIVERSIDE REQUIREMENTS. BY <u>Man Sosa</u> REF 10351 9-24-80 BERRYMAN & STEPHENSON INC. DATE	CITY OF RIVERSIDE DOMESTIC SYSTEM	PREPARED BY: CLIFFORD A. FORKERT 22311 BROOKHURST ST. SUITE "I" HUNTINGTON BEACH, CA. 92646 TEL. (714) 963-6793	CITY OF RIVERSIDE, CALIFORNIA DEPARTMENT OF PUBLIC WORKS	SEWER PLAN TRACT 8716-1 8716-2 INDEX 8716	INDEXED & D.D. PROJECT NO. S-1259
	BY <u>Fred Lantz</u> FOR 11/11/80 CHIEF UTILITIES ENGINEER, WATER DATE	BY <u>Clifford A. Forkert</u> 8-18-80 R.C.E. 7211 DATE	APPROVED BY PRINCIPAL ENGINEER PARK DEPARTMENT TRAFFIC DIVISION CHIEF P. W. ENGR. PLANNING DEPT.	APPROVED BY DIRECTOR OF PUBLIC WORKS DATE 11/10/80	SHEET 1 OF 7



① ENCASE SEWER 4' S EACH SIDE OF WATER CROSSING WITH TYPE "C" ENLARGEMENT AS PER PUBLIC UTILITY DWG. 023

BENCH MARK
CITY BENCHMARK NO. E4-1 P.K. NAIL AND TAG
IN NORTHEAST CORNER OF CONCRETE GUTTER ON NORTHERLY
SIDE VICTORIA AVENUE 300' WESTERLY OF JACKSON STREET.
ELEVATION 871.412



NOTE: FOR GENERAL AND CONSTRUCTION NOTES SEE SHEET NO. 1.

NOTE: CALL METROPOLITAN WATER DISTRICT (951) 962-4400 EXT. 432, ART. KNIGHT & DAY, PRIOR TO ANY WORK IN VICINITY OF METROPOLITAN'S PIPELINE EASEMENT.

PLANS CHECKED AND FOUND TO COMPLY WITH CITY OF RIVERSIDE REQUIREMENTS.
BY: *Mac Sloan* RCF 10354 9-24-80
BERRYMAN & STEPHENSON, INC. DATE

CITY OF RIVERSIDE
DOMESTIC SYSTEM
Fred Lant 10/1/77
CHIEF UTILITIES ENGINEER, WATER DATE

PREPARED BY:
CLIFFORD A. FORKERT
22311 BROOKHURST ST. SUITE "I"
HUNTINGTON BEACH, CAL. 92646
TEL. (714) 963-6753
Clifford A. Forkert 8-18-80
R.C.E. 7211 DATE

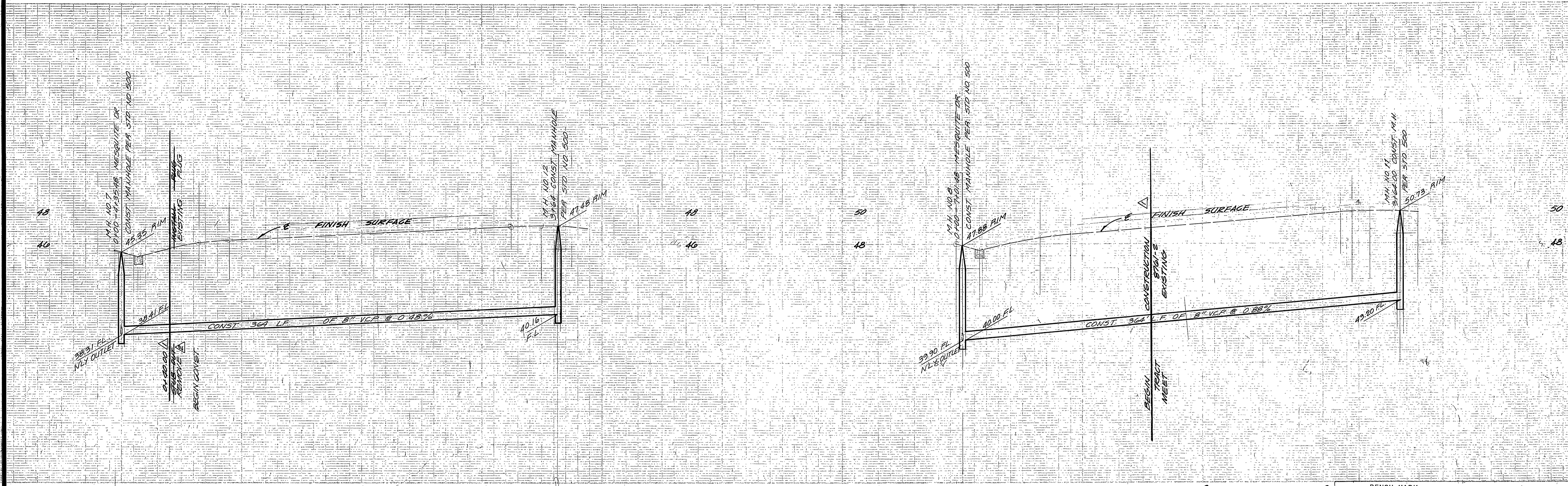
DESIGNED BY *G.A.S.* DRAWN BY *R.M.* CHECKED BY *G.A.S.*

CITY OF RIVERSIDE, CALIFORNIA
DEPARTMENT OF PUBLIC WORKS
APPROVED BY: *[Signature]*
PRINCIPAL ENGINEER
TRAFFIC DIVISION
DATE: 11/10/80

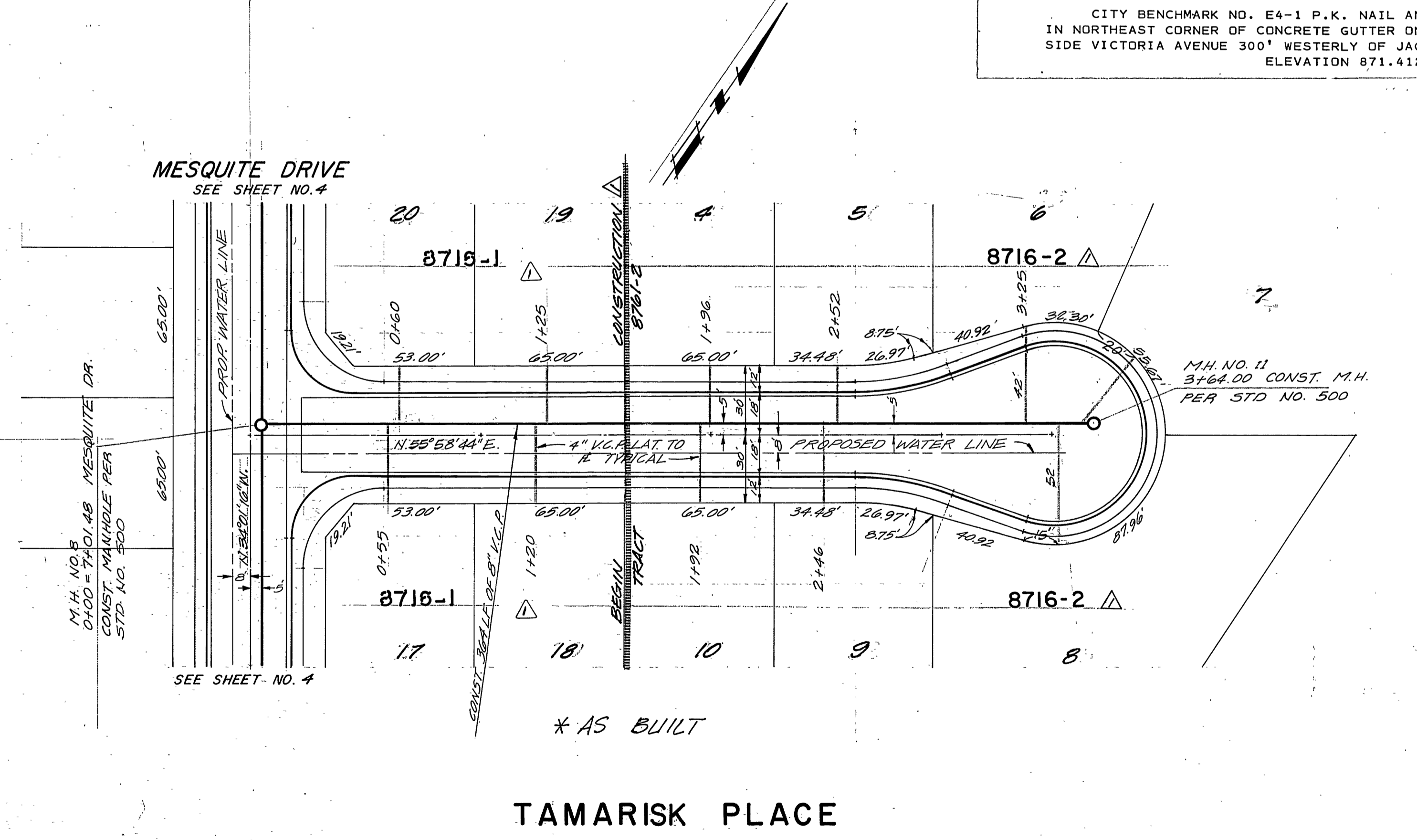
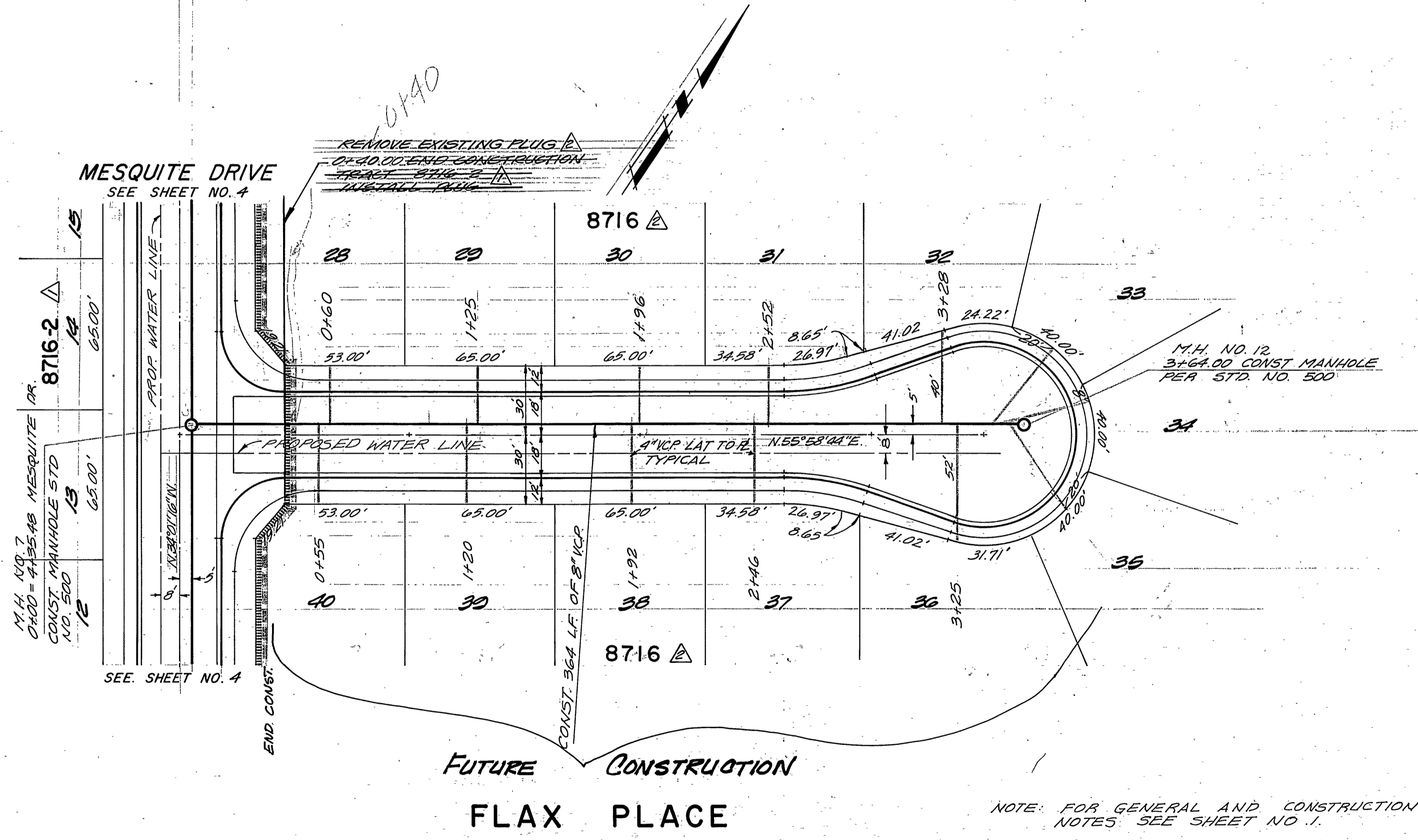
SEWER PLAN & PROFILE
TRACT 8716-1 8716-2
AGAVE PLACE
HORIZ. SCALE: 1" = 40'
VERT. SCALE: 1" = 4'

PROJECT NO.
S-1259
SHEET 2 OF 7
FILE NO.

* AS BUILT 3-14-84 BRET!



BENCH MARK
CITY BENCHMARK NO. E4-1 P.K. NAIL AND TAG
IN NORTHEAST CORNER OF CONCRETE GUTTER ON NORTHERLY
SIDE VICTORIA AVENUE 300' WESTERLY OF JACKSON STREET.
ELEVATION 871.412



PLANS CHECKED AND FOUND TO COMPLY WITH
CITY OF RIVERSIDE REQUIREMENTS!
BY Max Sloan RCE 10354 9-24-80
BERRYMAN & STEPHENSON INC. DATE

CITY OF RIVERSIDE
DOMESTIC SYSTEM
Fred Faint for 11/10/77
CHIEF UTILITIES ENGINEER, WATER DATE

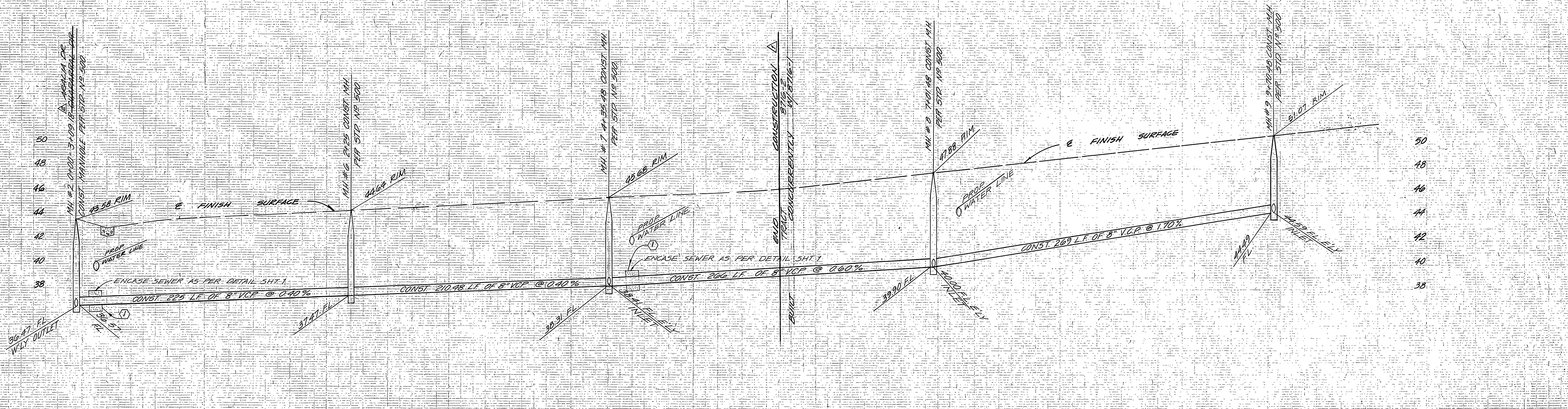
PREPARED BY:
CLIFFORD A. FORKERT
22311 BROOKHURST ST. SUITE "I"
HUNTINGTON BEACH, CA. 92646
TEL. (714) 963-6793
Clifford A. Forkert 8-18-80
DATE R.Q.E. 7211

MARK	REVISIONS	DATE	APPR.	DATE
Δ	REVISED TO SHOW 8716 CONST. 4-10-80	5-2-83		
Δ	REVISED TO SHOW 8716 CONST. 4-10-80	5-2-83		

CITY OF RIVERSIDE, CALIFORNIA
DEPARTMENT OF PUBLIC WORKS
APPROVED BY: [Signature] DATE: 11/10/80
PRINCIPAL ENGINEER
TRAFFIC DIVISION
CHIEF P. W. ENGR.
DESIGNED BY: G.H.S. DRAWN BY: R.M. CHECKED BY: G.H.S.

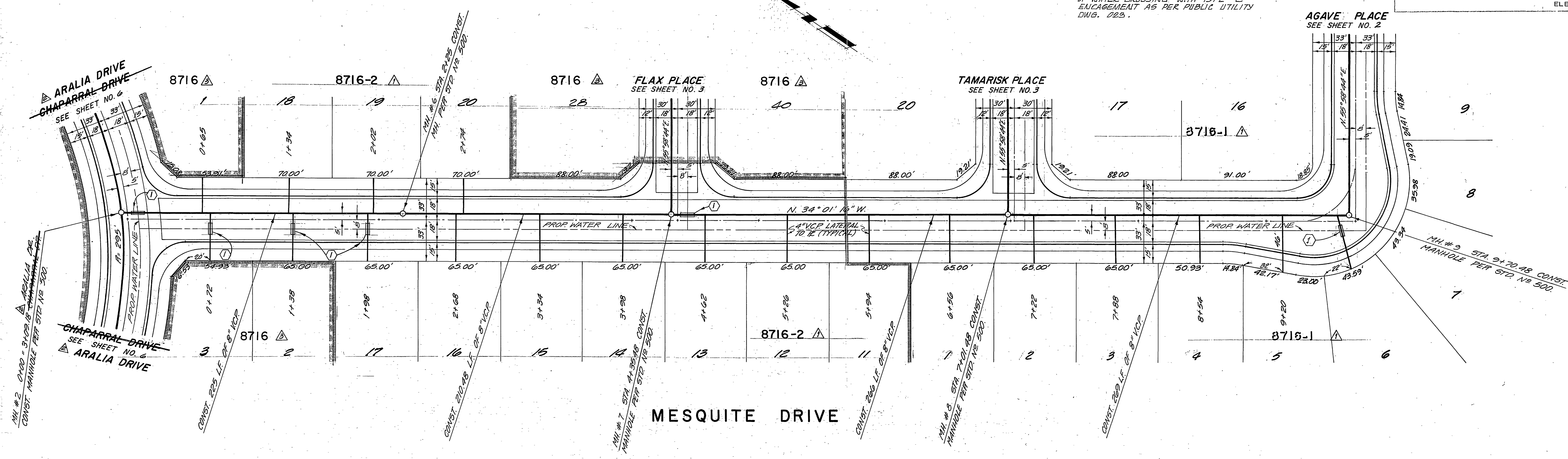
SEWER PLAN & PROFILE
TRACT 8716-1, 8716-2
FLAX PLACE 8716
TAMARISK PLACE
HORIZ. SCALE: 1" = 40' VERT. SCALE: 1" = 4'

PROJECT NO. S-1259
SHEET 3 OF 7
FILE NO.



BENCH MARK
 CITY BENCHMARK NO. E4-1 P.K. NAIL AND TAG
 IN NORTHEAST CORNER OF CONCRETE GUTTER ON NORTHERLY
 SIDE VICTORIA AVENUE 300' WESTERLY OF JACKSON STREET.
 ELEVATION 871.412

① ENCASE SENEW 4.5' EACH SIDE
 OF WATER CROSSING WITH TYPE "C"
 ENCAGEMENT AS PER PUBLIC UTILITY
 DWG. 022.



PLANS CHECKED AND FOUND TO COMPLY WITH
 CITY OF RIVERSIDE REQUIREMENTS.
 BY Max Sloan REF 10358 9-24-88
 BERRYMAN & STEPHENSON INC. DATE

CITY OF RIVERSIDE
 DOMESTIC SYSTEM
 Prepared by:
 Clifford A. Forkert
 22311 BROOKHURST ST. SUITE "I"
 HUNTINGTON BEACH, CA. 92646
 TEL. (714) 963-6793
 Chief Utilities Engineer, Water DATE 4/10/99

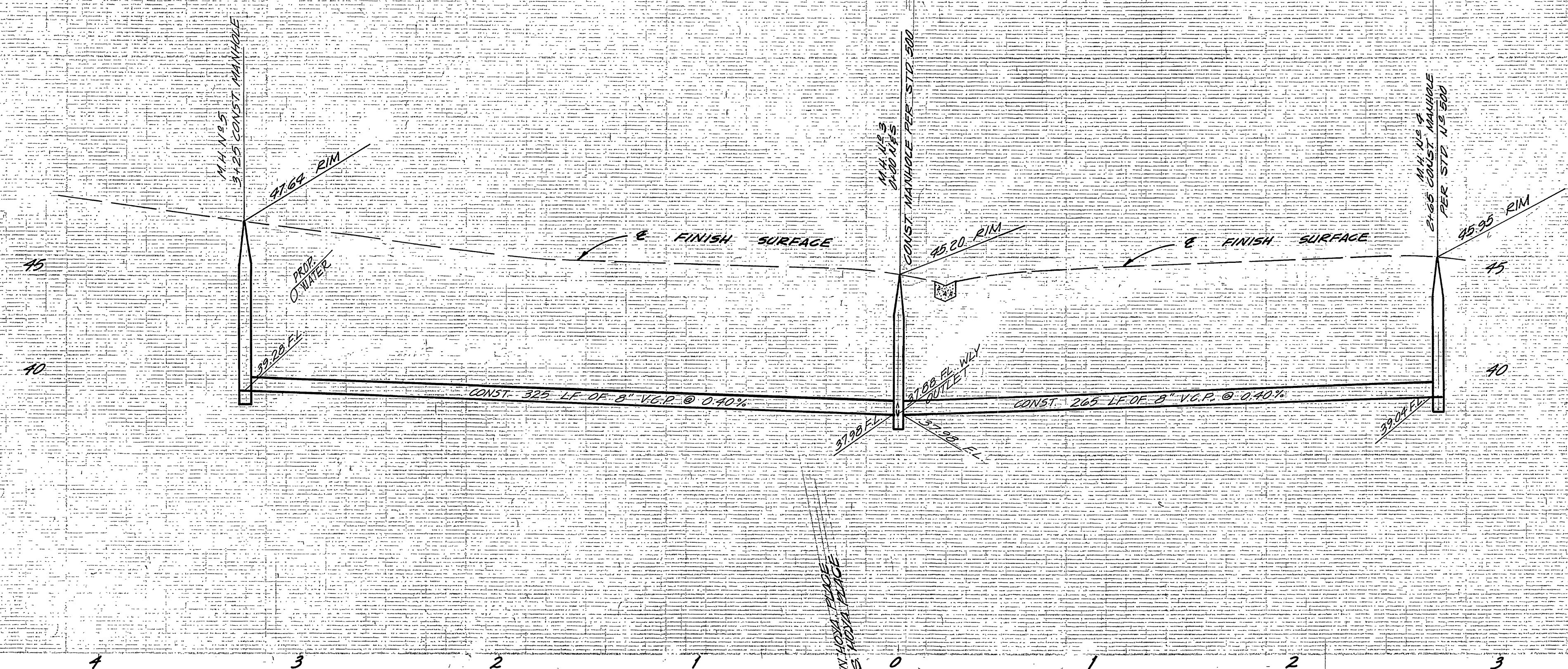
DESIGNED BY G.A.S. DRAWN BY R.M. CHECKED BY G.A.S.
 REVISIONS
 1. REVISED TO SHOWING CONST. 4-10-88 BRET
 2. REVISED STREET NAME 4-2-89
 3. REVISED TO SHOW STREETS CONST. 4-2-89
 4. REVISED TO SHOW STREETS CONST. 4-2-89
 5. REVISED TO SHOW STREETS CONST. 4-2-89
 6. REVISED TO SHOW STREETS CONST. 4-2-89
 7. REVISED TO SHOW STREETS CONST. 4-2-89
 8. REVISED TO SHOW STREETS CONST. 4-2-89
 9. REVISED TO SHOW STREETS CONST. 4-2-89
 10. REVISED TO SHOW STREETS CONST. 4-2-89
 11. REVISED TO SHOW STREETS CONST. 4-2-89
 12. REVISED TO SHOW STREETS CONST. 4-2-89
 13. REVISED TO SHOW STREETS CONST. 4-2-89
 14. REVISED TO SHOW STREETS CONST. 4-2-89
 15. REVISED TO SHOW STREETS CONST. 4-2-89
 16. REVISED TO SHOW STREETS CONST. 4-2-89
 17. REVISED TO SHOW STREETS CONST. 4-2-89
 18. REVISED TO SHOW STREETS CONST. 4-2-89
 19. REVISED TO SHOW STREETS CONST. 4-2-89
 20. REVISED TO SHOW STREETS CONST. 4-2-89
 21. REVISED TO SHOW STREETS CONST. 4-2-89
 22. REVISED TO SHOW STREETS CONST. 4-2-89
 23. REVISED TO SHOW STREETS CONST. 4-2-89
 24. REVISED TO SHOW STREETS CONST. 4-2-89
 25. REVISED TO SHOW STREETS CONST. 4-2-89
 26. REVISED TO SHOW STREETS CONST. 4-2-89
 27. REVISED TO SHOW STREETS CONST. 4-2-89
 28. REVISED TO SHOW STREETS CONST. 4-2-89
 29. REVISED TO SHOW STREETS CONST. 4-2-89
 30. REVISED TO SHOW STREETS CONST. 4-2-89
 31. REVISED TO SHOW STREETS CONST. 4-2-89
 32. REVISED TO SHOW STREETS CONST. 4-2-89
 33. REVISED TO SHOW STREETS CONST. 4-2-89

MARK	REVISIONS	DATE
1	REVISED TO SHOWING CONST. 4-10-88 BRET	4-10-88
2	REVISED STREET NAME 4-2-89	4-2-89
3	REVISED TO SHOW STREETS CONST. 4-2-89	4-2-89
4	REVISED TO SHOW STREETS CONST. 4-2-89	4-2-89
5	REVISED TO SHOW STREETS CONST. 4-2-89	4-2-89
6	REVISED TO SHOW STREETS CONST. 4-2-89	4-2-89
7	REVISED TO SHOW STREETS CONST. 4-2-89	4-2-89
8	REVISED TO SHOW STREETS CONST. 4-2-89	4-2-89
9	REVISED TO SHOW STREETS CONST. 4-2-89	4-2-89
10	REVISED TO SHOW STREETS CONST. 4-2-89	4-2-89
11	REVISED TO SHOW STREETS CONST. 4-2-89	4-2-89
12	REVISED TO SHOW STREETS CONST. 4-2-89	4-2-89
13	REVISED TO SHOW STREETS CONST. 4-2-89	4-2-89
14	REVISED TO SHOW STREETS CONST. 4-2-89	4-2-89
15	REVISED TO SHOW STREETS CONST. 4-2-89	4-2-89
16	REVISED TO SHOW STREETS CONST. 4-2-89	4-2-89
17	REVISED TO SHOW STREETS CONST. 4-2-89	4-2-89
18	REVISED TO SHOW STREETS CONST. 4-2-89	4-2-89
19	REVISED TO SHOW STREETS CONST. 4-2-89	4-2-89
20	REVISED TO SHOW STREETS CONST. 4-2-89	4-2-89
21	REVISED TO SHOW STREETS CONST. 4-2-89	4-2-89
22	REVISED TO SHOW STREETS CONST. 4-2-89	4-2-89
23	REVISED TO SHOW STREETS CONST. 4-2-89	4-2-89
24	REVISED TO SHOW STREETS CONST. 4-2-89	4-2-89
25	REVISED TO SHOW STREETS CONST. 4-2-89	4-2-89
26	REVISED TO SHOW STREETS CONST. 4-2-89	4-2-89
27	REVISED TO SHOW STREETS CONST. 4-2-89	4-2-89
28	REVISED TO SHOW STREETS CONST. 4-2-89	4-2-89
29	REVISED TO SHOW STREETS CONST. 4-2-89	4-2-89
30	REVISED TO SHOW STREETS CONST. 4-2-89	4-2-89
31	REVISED TO SHOW STREETS CONST. 4-2-89	4-2-89
32	REVISED TO SHOW STREETS CONST. 4-2-89	4-2-89
33	REVISED TO SHOW STREETS CONST. 4-2-89	4-2-89

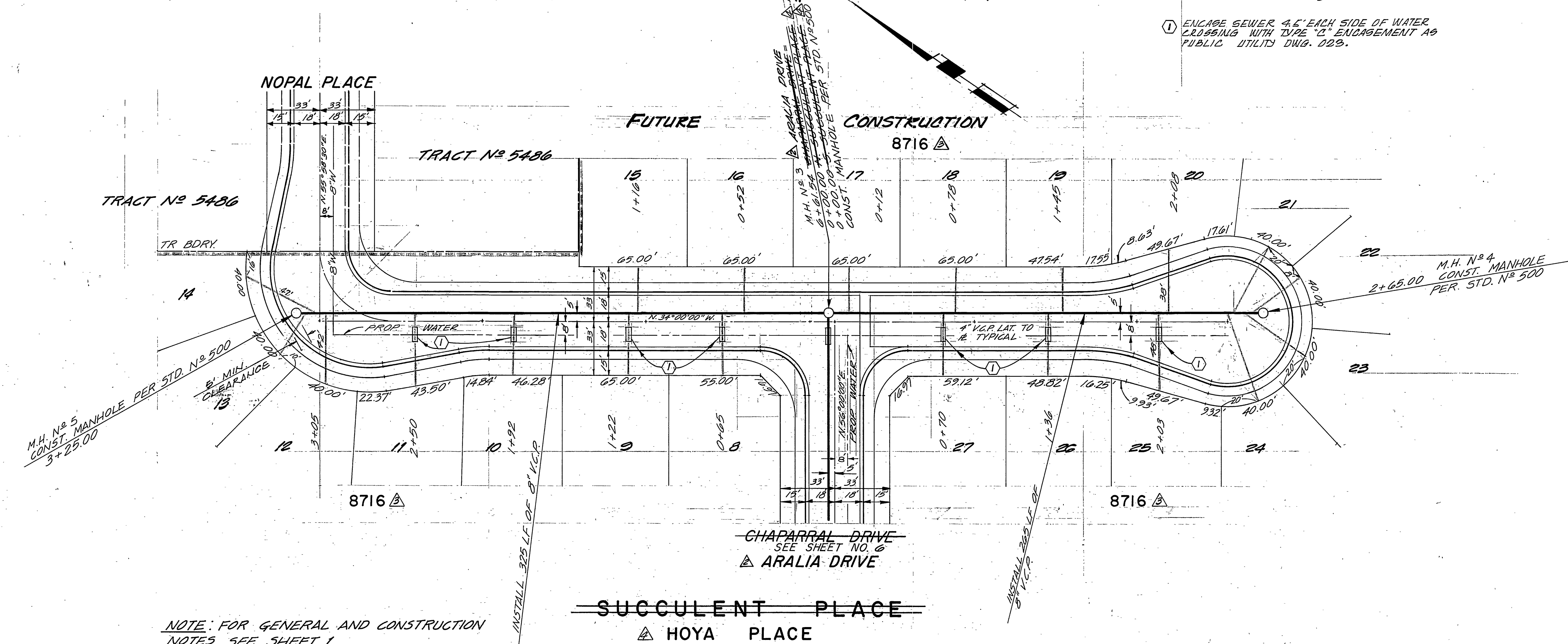
CITY OF RIVERSIDE, CALIFORNIA
 DEPARTMENT OF PUBLIC WORKS
 APPROVED BY: [Signature]
 DIRECTOR OF PUBLIC WORKS
 DATE: 4/10/99

SEWER PLAN & PROFILE
 TRACT 8716-1
 MESQUITE DRIVE
 HORIZ. SCALE: 1" = 40'
 VERT. SCALE: 1" = 4'

PROJECT NO. S-1259
 SHEET 4 OF 7
 FILE NO.



BENCH MARK
 CITY BENCHMARK NO. E4-1 P.K. NAIL AND TAG
 IN NORTHEAST CORNER OF CONCRETE GUTTER ON NORTHERLY
 SIDE VICTORIA AVENUE 300' WESTERLY OF JACKSON STREET,
 ELEVATION 871.412



NOTE: FOR GENERAL AND CONSTRUCTION NOTES SEE SHEET 1

NOT COMPLETED
 FUTURE CONSTRUCTION
 BRET! 3-14-84

PLANS CHECKED AND FOUND TO COMPLY WITH
 CITY OF RIVERSIDE REQUIREMENTS
 BY Max Sloan RCE 10354 9-24-80
 BERRYMAN & STEPHENSON INC. DATE

CITY OF RIVERSIDE
 DOMESTIC SYSTEM
 PREPARED BY:
 CLIFFORD A. FORKERT
 22311 BROOKHURST ST. SUITE "I"
 HUNTINGTON BEACH, CA. 92646
 TEL. (714) 965-6793
Fred Lent 11/10/77
 CHIEF UTILITIES ENGINEER, WATER DATE

REVISIONS
 1. REVISED STREET NAME FROM NIPAL TO NOPAL
 2. REVISED TO SHOW 8\"/>

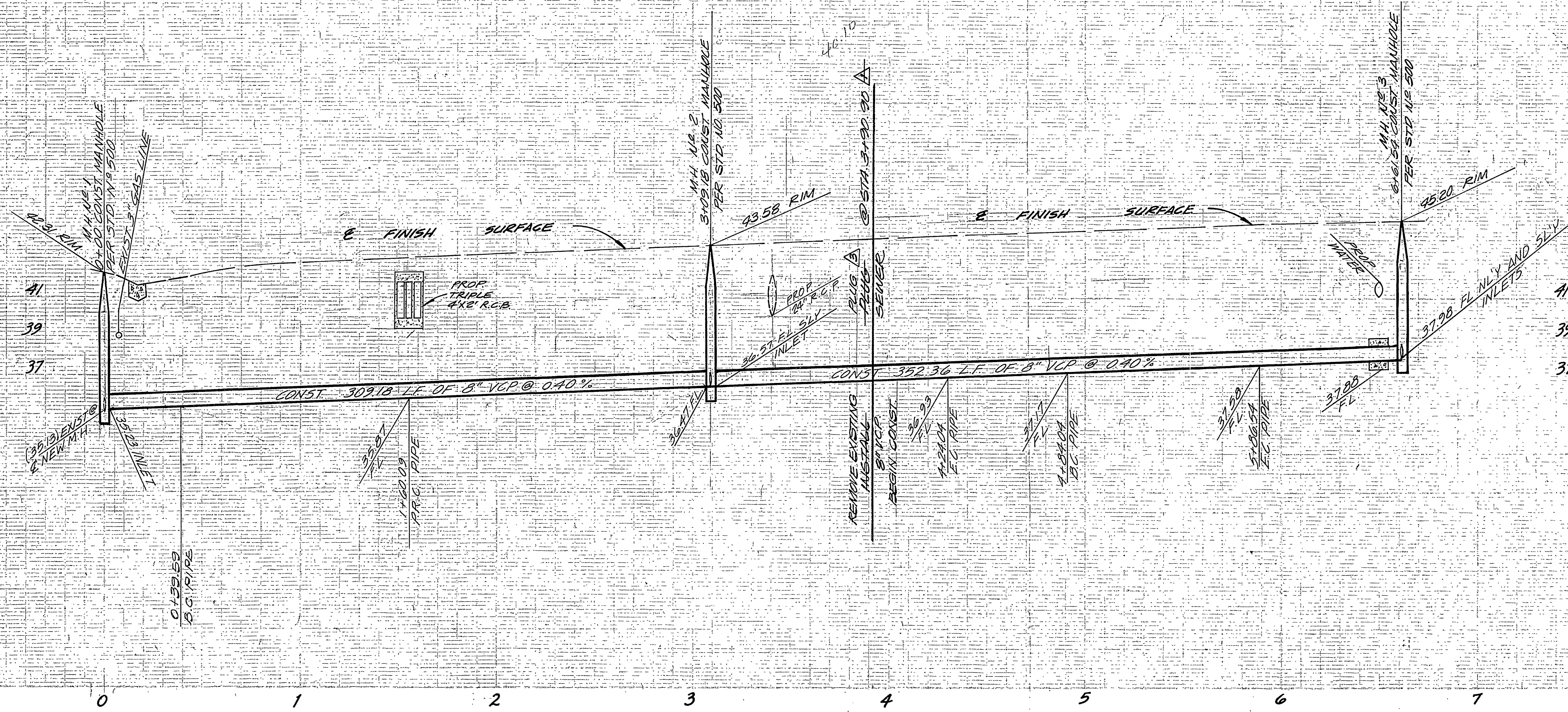
DESIGNED BY G.A.E. DRAWN BY R.M. CHECKED BY G.A.E.
 DATE 11-9-80

CITY OF RIVERSIDE, CALIFORNIA
 DEPARTMENT OF PUBLIC WORKS
 APPROVED BY: [Signature] DATE 11/10/80
 PRINCIPAL ENGINEER
 PARK DEPARTMENT
 TRAFFIC DIVISION
 CHIEF P. W. ENGR.
 PLANNING DEPT.

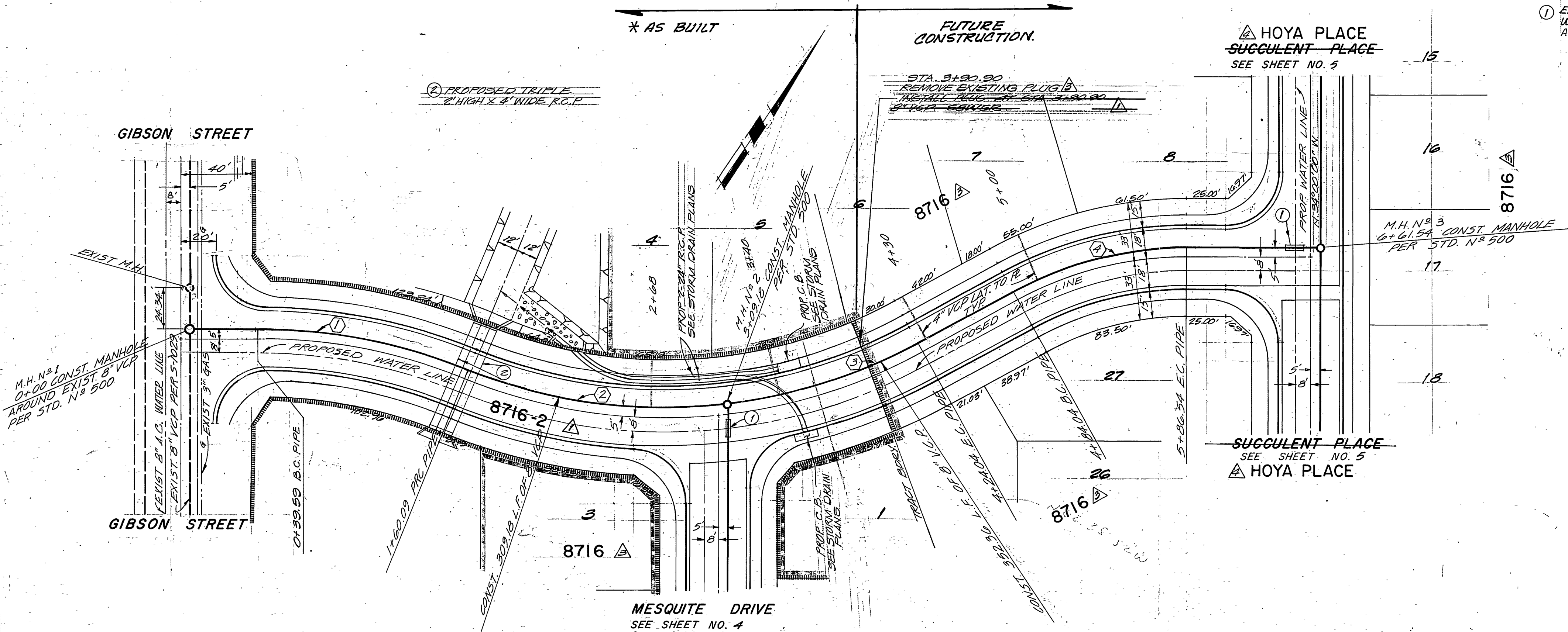
SEWER PLAN & PROFILE
 TRACT 8716-1 8716-2
 8716
 SUCCULENT PLACE
 HOYA PLACE

PROJECT NO.
 S-1259
 SHEET 5 OF 7
 FILE NO.

HORIZ. SCALE: 1" = 40' VERT. SCALE: 1" = 4'



BENCH MARK
CITY BENCHMARK NO. E4-1 P.K. NAIL AND TAG
IN NORTHEAST CORNER OF CONCRETE GUTTER ON NORTHERLY
SIDE VICTORIA AVENUE 300' WESTERLY OF JACKSON STREET.
ELEVATION 871.412



① ENCASE SEWER 4.5' EACH SIDE OF
WATER CROSSING WITH TYPE "C" ENCASEMENT
AS PER PUBLIC UTILITY DWG. 028.

ARALIA CHAPARRAL

PIPE CURVE DATA				
N ^o	Δ	R	L	T
①	22° 38' 25"	305'	120.52'	61.06'
②	28° 57' 28"	295'	149.09'	76.18'
③	22° 18' 33"	295'	114.86'	58.17'
④	28° 38' 52"	205'	102.50'	52.35'

NOTE: FOR GENERAL AND CONSTRUCTION
NOTES SEE SHEET 1

PLANS CHECKED AND FOUND TO COMPLY WITH
CITY OF RIVERSIDE REQUIREMENTS
BY Max Sloan PCE 10354 9-24-80
BERRYMAN & STEPHENSON INC. DATE

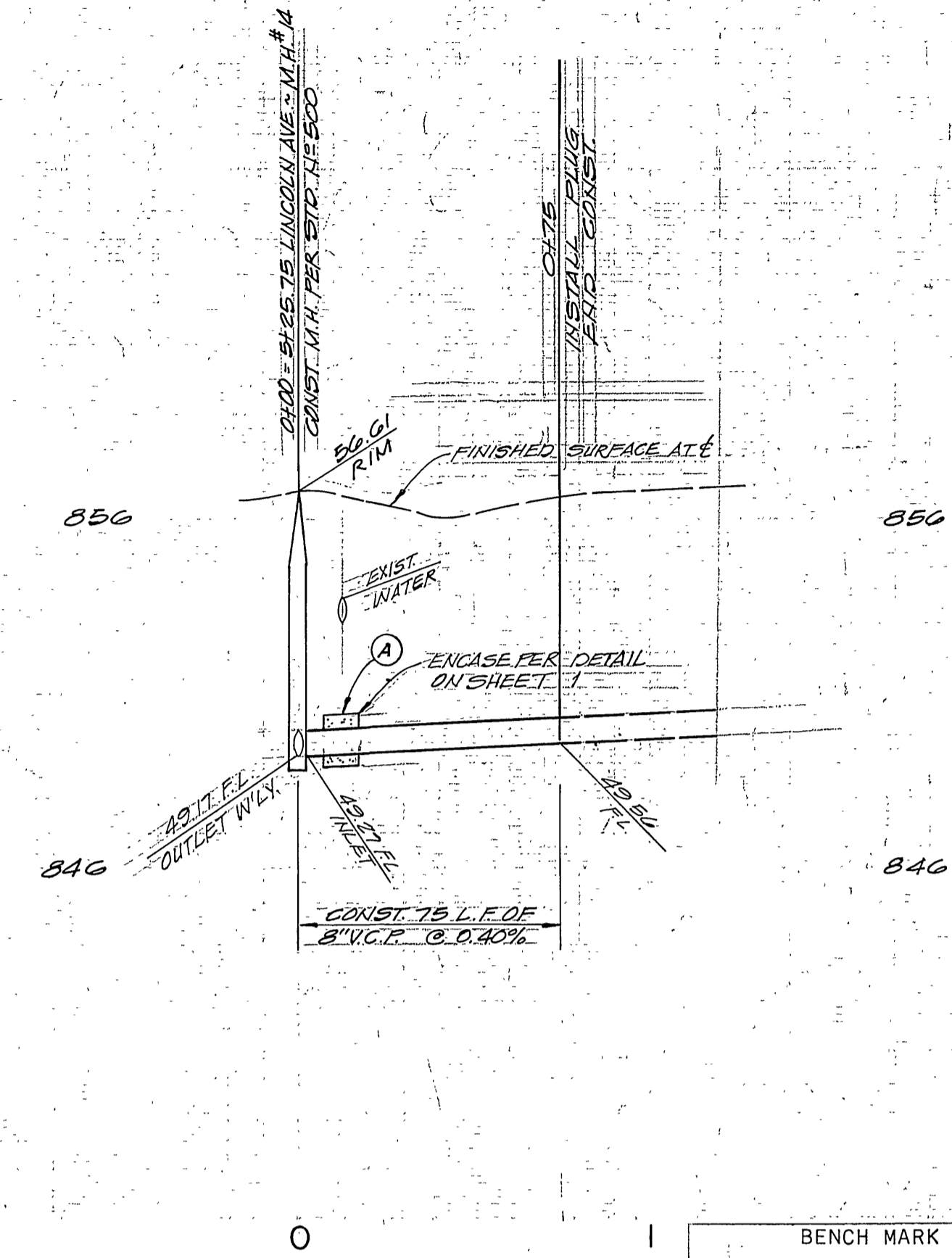
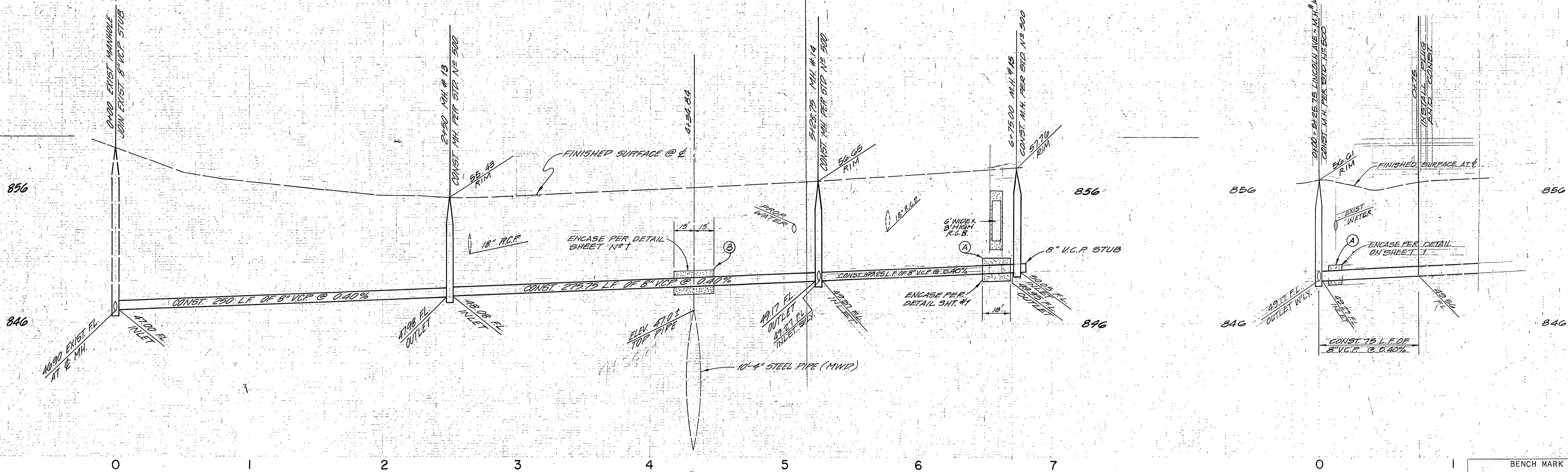
CITY OF RIVERSIDE
DOMESTIC SYSTEM
APPROVED BY: Fred Lantz 10/1/77
CHIEF UTILITIES, ENGINEER, WATER DATE

PREPARED BY:
CLIFFORD A. FORKERT
22311 BROOKHURST ST. SUITE "I"
HUNTINGTON BEACH, CAL. 92646
TEL. (714) 963-6793
R.O.E. 7211 DATE

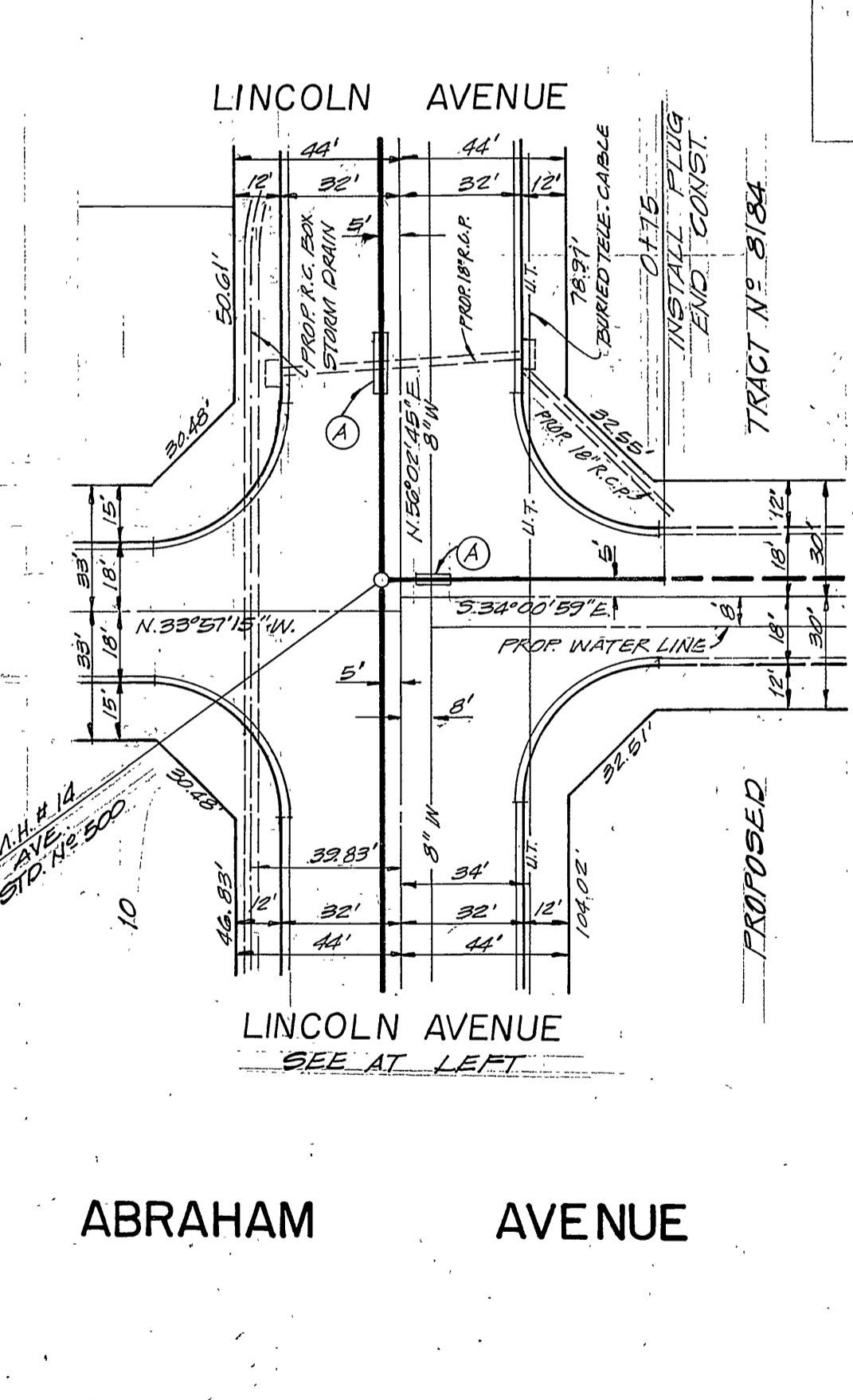
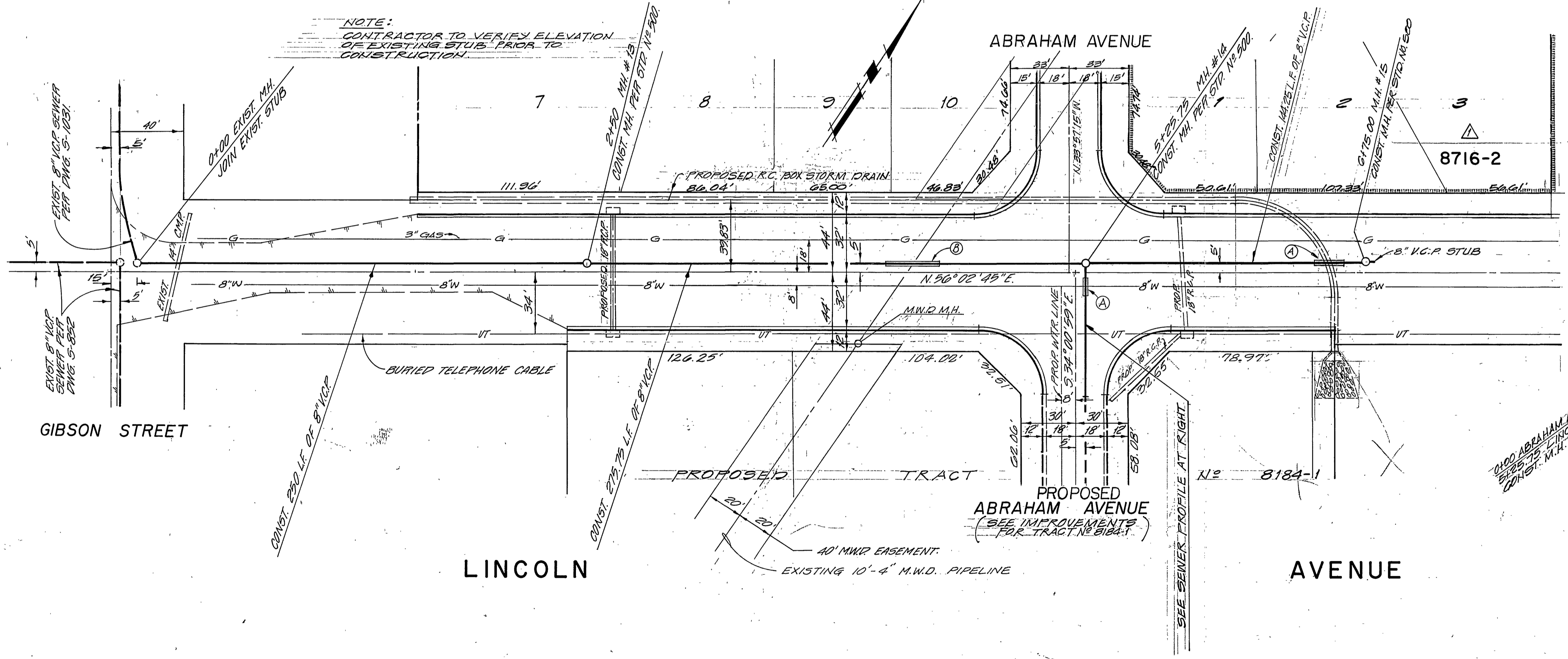
REVISIONS
DESIGNED BY G.A.E. DRAWN BY R.M. CHECKED BY G.A.E.

CITY OF RIVERSIDE, CALIFORNIA
DEPARTMENT OF PUBLIC WORKS
APPROVED BY: [Signature]
DIRECTOR OF PUBLIC WORKS
DATE 11/1/80

SEWER PLAN & PROFILE
TRACT 8716-1-8716-2
ARALIA DRIVE 8716
CHAPARRAL DRIVE
S-1259
SHEET 6 OF 7
HORIZ. SCALE: 1" = 40' VERT. SCALE: 1" = 4'



BENCH MARK
 CITY BENCHMARK NO. E4-1 P.K. NAIL AND TAG
 IN NORTHEAST CORNER OF CONCRETE GUTTER ON NORTHERLY
 SIDE VICTORIA AVENUE, 300' WESTERLY OF JACKSON STREET.
 ELEVATION 871.412



NOTE:
 CONTRACTOR TO VERIFY ELEVATION
 OF EXISTING STUBS PRIOR TO
 CONSTRUCTION.

- Ⓐ - ENCASE SEWER AS PER DETAIL SHEET '1' & PER C.W.D. 023
- Ⓑ - ENCASE SEWER AS PER DETAIL SHEET '1' & PER M.W.D. DWG. C-11632 & C9547

PLANS CHECKED AND FOUND TO COMPLY WITH
 CITY OF RIVERSIDE REQUIREMENTS
 BY *Max Sloan* PCE 10354 9-24-80
 BERRYMAN & STEPHENSON INC. DATE

CITY OF RIVERSIDE
 DOMESTIC SYSTEM
Fred Lantz FOR 10/10/80
 CHIEF UTILITIES ENGINEER, WATER DATE

NOTES:
 1. FOR GENERAL AND CONSTRUCTION NOTES SEE SHEET NO. 1
 2. CALL METROPOLITAN WATER DISTRICT AT (949) 626-4522 EXT. 432 2 DAYS PRIOR TO CONSTRUCTION ACROSS AGENCY ATTENTION: "ART KNOT"

PREPARED BY:
 CLIFFORD A. FORKERT
 2231 BROOKHURST ST. SUITE "1"
 HUNTINGTON BEACH, CA. 92646
 TEL. (714) 963-6793
Clifford A. Forkert 8-18-80
 R.C.E.7211 DATE

REVISIONS
 DESIGNED BY G.A.S. DRAWN BY L.S.F. CHECKED BY G.A.S.
 PLANNING DEPT. DATE 11/10/80

CITY OF RIVERSIDE, CALIFORNIA
 DEPARTMENT OF PUBLIC WORKS
 APPROVED BY *[Signature]* DATE 11/10/80
 CHIEF OF PUBLIC WORKS

* AS BUILT 3-14-84 BRET!
 CITY OF RIVERSIDE, CALIFORNIA
 DEPARTMENT OF PUBLIC WORKS
 TRACT 8716-1 8716-2
LINCOLN AVENUE
ABRAHAM AVENUE
 S-1259
 SHEET 7 OF 7
 HORIZ. SCALE: 1" = 40'
 VERT. SCALE: 1" = 4'