

CITY OF RIVERSIDE, CALIFORNIA TRUNK SEWER REHABILITATION SECOND STAGE

INDEX

1958

SHEET NO.

SHEET NO.	DESCRIPTION
1	TITLE SHEET
2	KEY MAP AND LEGEND
3	VICTORIA TRUNK STA. 0+00 TO STA. 13+00
4	VICTORIA TRUNK STA. 13+00 TO STA. 25+00
5	VICTORIA TRUNK STA. 25+00 TO STA. 31+55
6	BROCKTON TRUNK ON BROCKTON AVENUE
7	BROCKTON TRUNK ON 13 TH STREET
8	DETAILS

MAYOR

EDWARD V. DALES

COUNCIL MEMBERS

JOHN H. BACKSTRAND
WILLIAM H. BONNETT
NANCY C. O'NEILL

JOHN B. BERGIN
CHARLES H. JOHNSON
JAMES A. SMUTZ

ULRICH L. VORIS

CITY MANAGER

TED B. ADSIT

DIRECTOR OF PUBLIC WORKS
AND CITY ENGINEER

JAMES F. MARTINEK

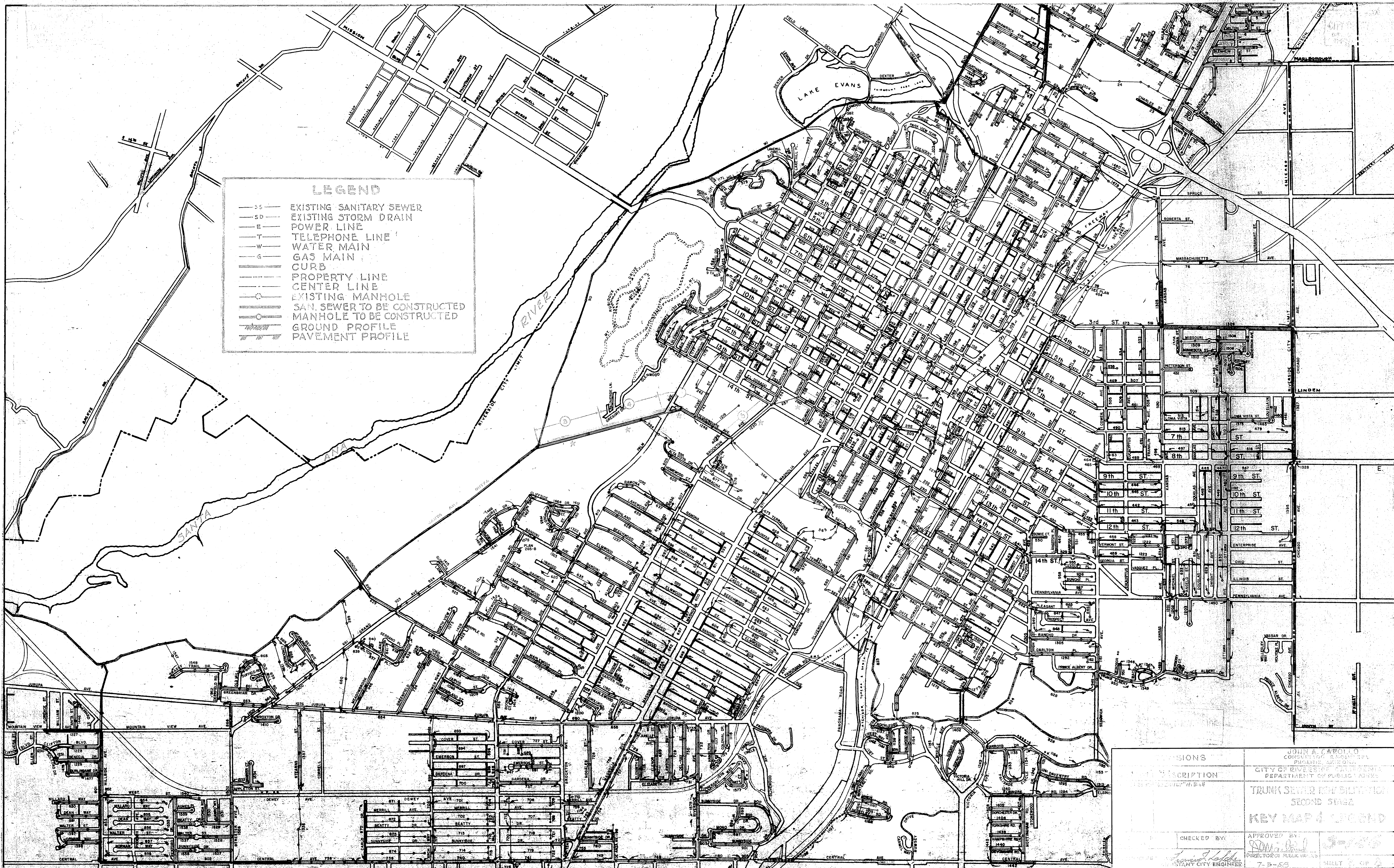
ASST. CITY ENGINEER

FRANK F. LEFEBER

CITY ATTORNEY

ALBERT H. FORD

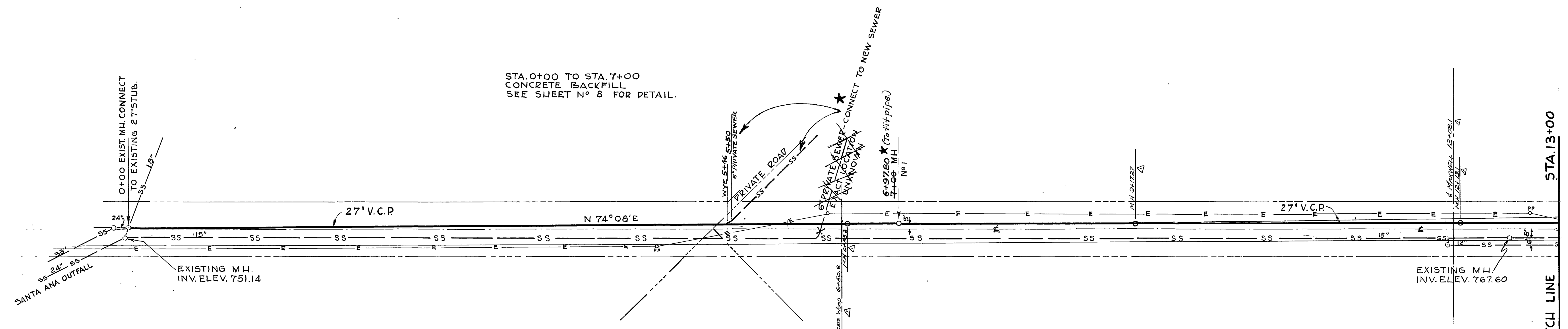
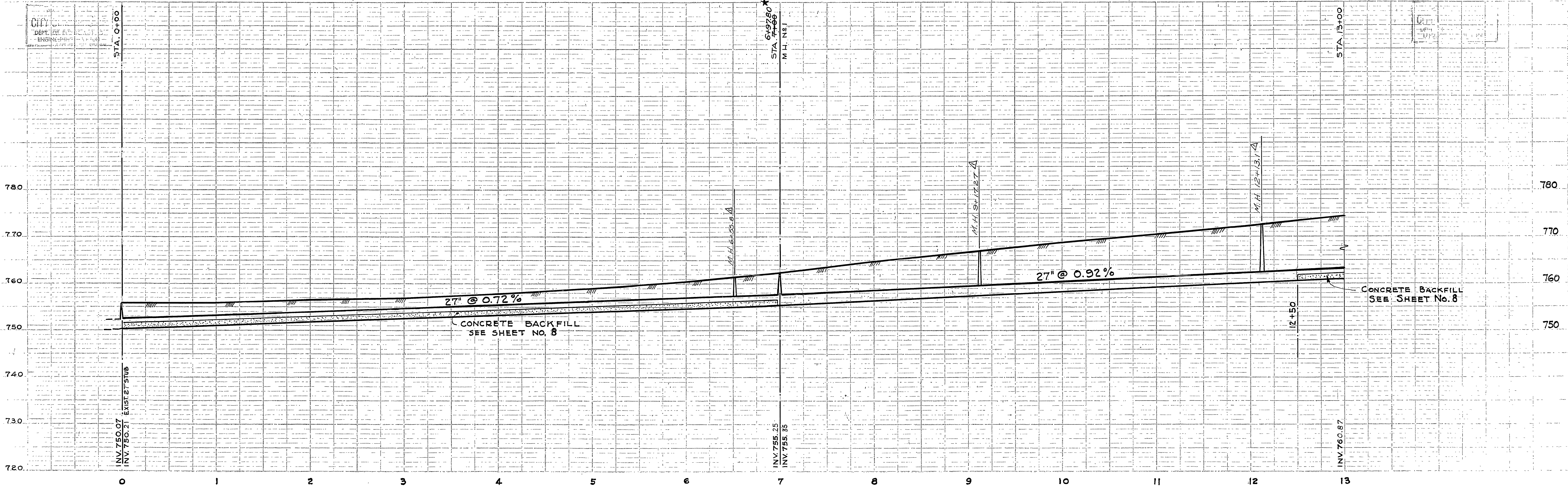
JOHN A. CAROLLO
CONSULTING ENGINEERS
PHOENIX ARIZONA



LEGEND

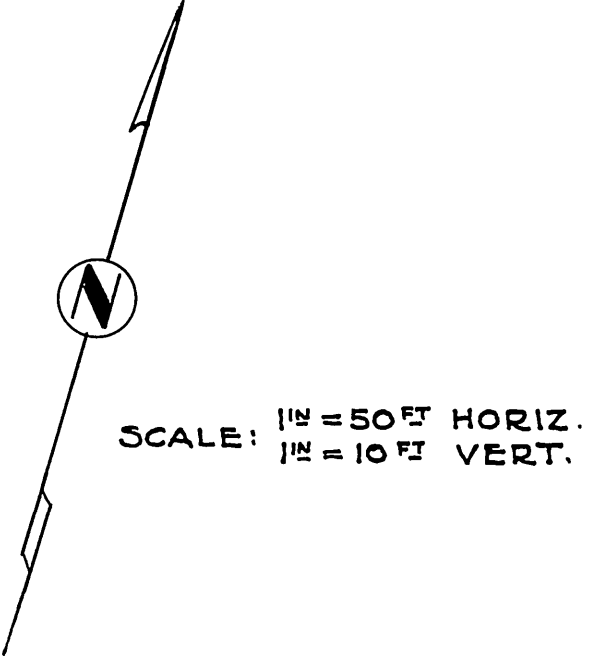
- SS— EXISTING SANITARY SEWER
- SD— EXISTING STORM DRAIN
- E— POWER LINE
- T— TELEPHONE LINE
- W— WATER MAIN
- G— GAS MAIN
- Curb
- Property Line
- Center Line
- EXISTING MANHOLE
- SAN. SEWER TO BE CONSTRUCTED
- MANHOLE TO BE CONSTRUCTED
- Ground Profile
- Pavement Profile

<p>DESCRIPTION</p> <p>TRUNK SEWER FOR DISTRICT</p> <p>SECOND STAGE</p> <p>KEY MAP & LEGEND</p>	<p style="text-align: center;">JOHN A. CAWOLLO</p> <p style="text-align: center;">CONSULTING ENGINEER</p> <p style="text-align: center;">CITY OF RIVERSIDE, CALIFORNIA</p> <p style="text-align: center;">DEPARTMENT OF PUBLIC WORKS</p> <p style="text-align: center;">7-5-53</p>
<p>CHECKED BY:</p> <p><i>James J. Kelly</i></p> <p>ASSISTANT CITY ENGINEER</p>	<p>APPROVED BY:</p> <p><i>John A. Cawollo</i></p> <p>DIRECTOR OF PUBLIC WORKS</p>



B.M. "□" ON SE. COR. BRIDGE
170 FT. WEST OF STA. 0+00 ELEV. 757.38

TEQUESQUITE AVENUE



MATCH LINE
SEE SHEET NO. 4

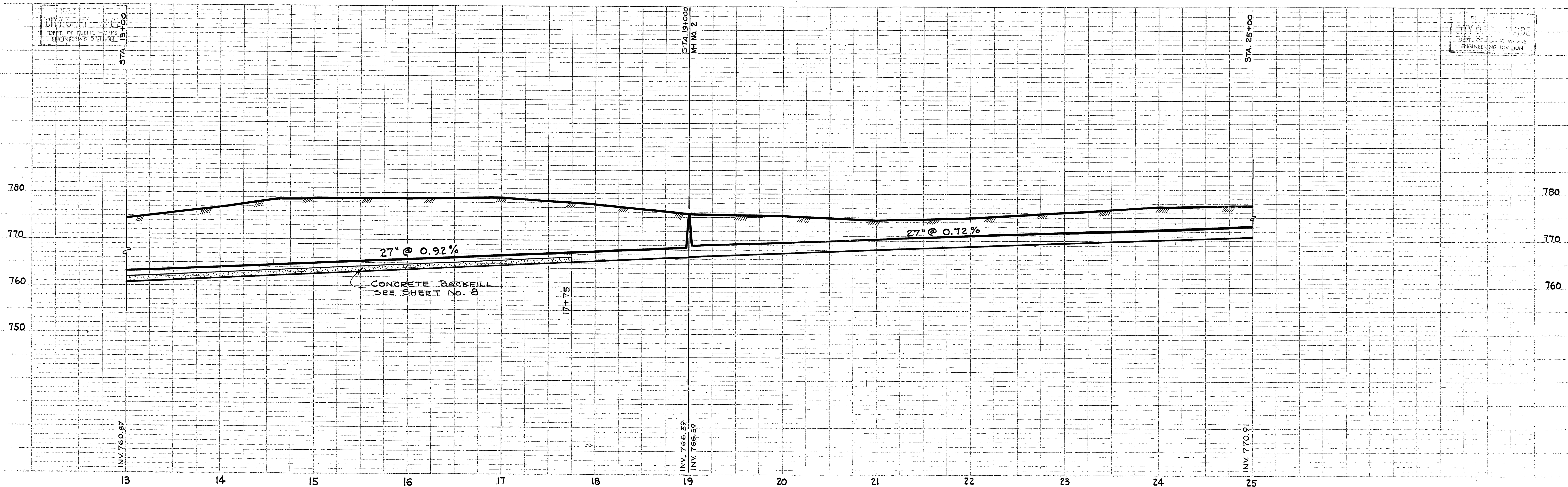
CITY OF RIVERSIDE
DEPT. OF PUBLIC WORKS
ENGINEERING DIVISION

REVISIONS			JOHN A. CAROLLO CONSULTING ENGINEERS PHOENIX, ARIZONA CITY OF RIVERSIDE CALIFORNIA DEPARTMENT OF PUBLIC WORKS
MARK	DATE	DESCRIPTION	
*	5-20-59	"AS BUILT" M.H.#1	TRUNK SEWER REHABILITATION SECOND STAGE VICTORIA TRUNK STA. 0+00 TO STA. 13+00
Δ	4-73	"AS BUILT" E.A.B.	
DESIGNED BY: R.D.L.		CHECKED BY: G.C.W.	APPROVED BY:
DRAWN BY: B.D.-G.C.W.			<i>[Signature]</i> DIRECTOR OF PUBLIC WORKS
RECOMMENDED BY: <i>[Signature]</i> ASSISTANT CITY ENGINEER			DATE: 7-3-58

5-126
SHEET 3 OF 8
4522-B-1096

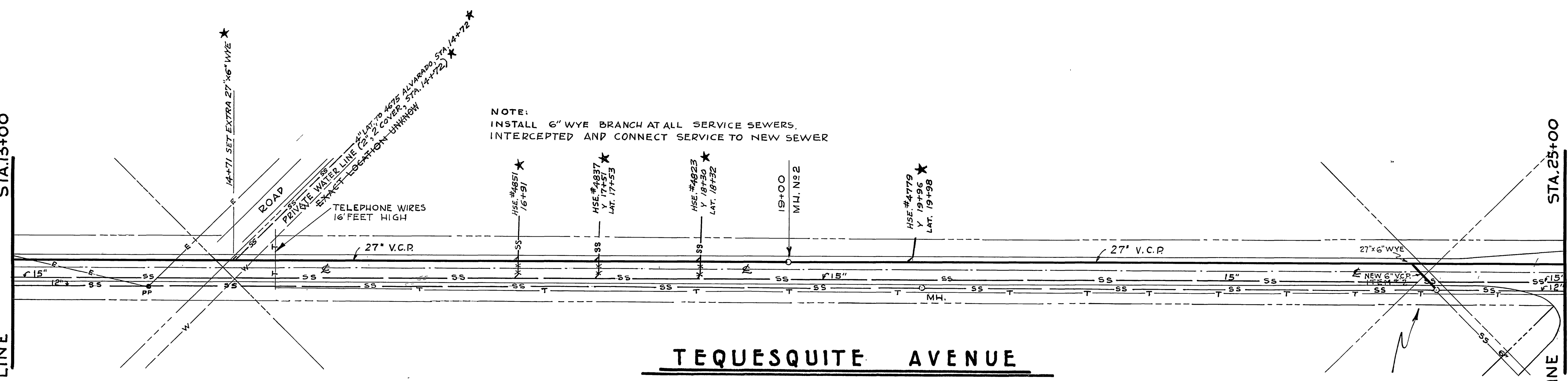
CITY OF RIVERSIDE
DEPT. OF PUBLIC WORKS
ENGINEERING DIVISION

CITY OF RIVERSIDE
DEPT. OF PUBLIC WORKS
ENGINEERING DIVISION



SEE SHEET NO. 3
MATCH LINE STA. 13+00

STA. 25+00
MATCH LINE
SEE SHEET NO. 5



TEQUESQUITE AVENUE

B.M. CUT NAIL IN POLE
15 FT. RT. STA. 18+40
ELEV. 778.50

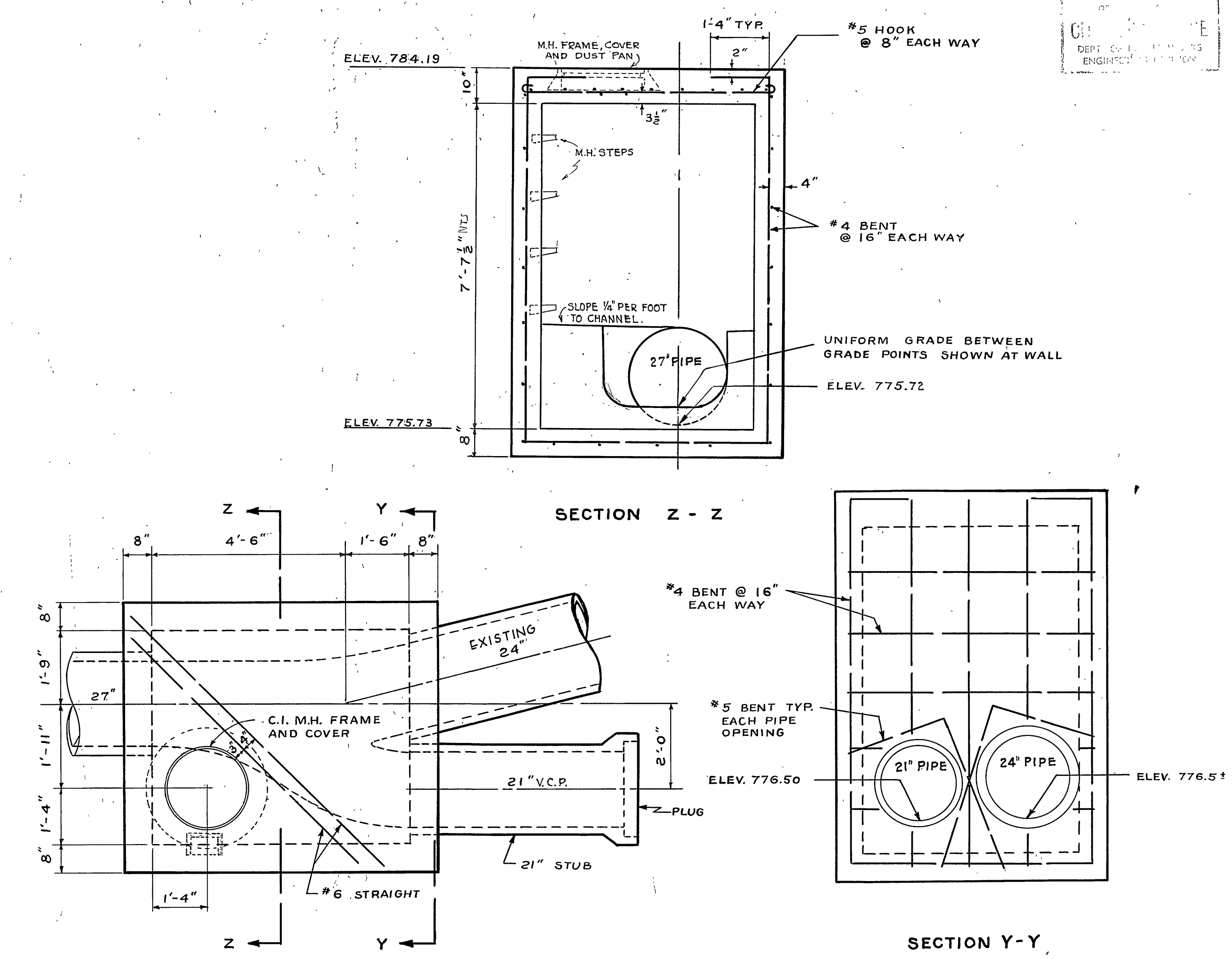
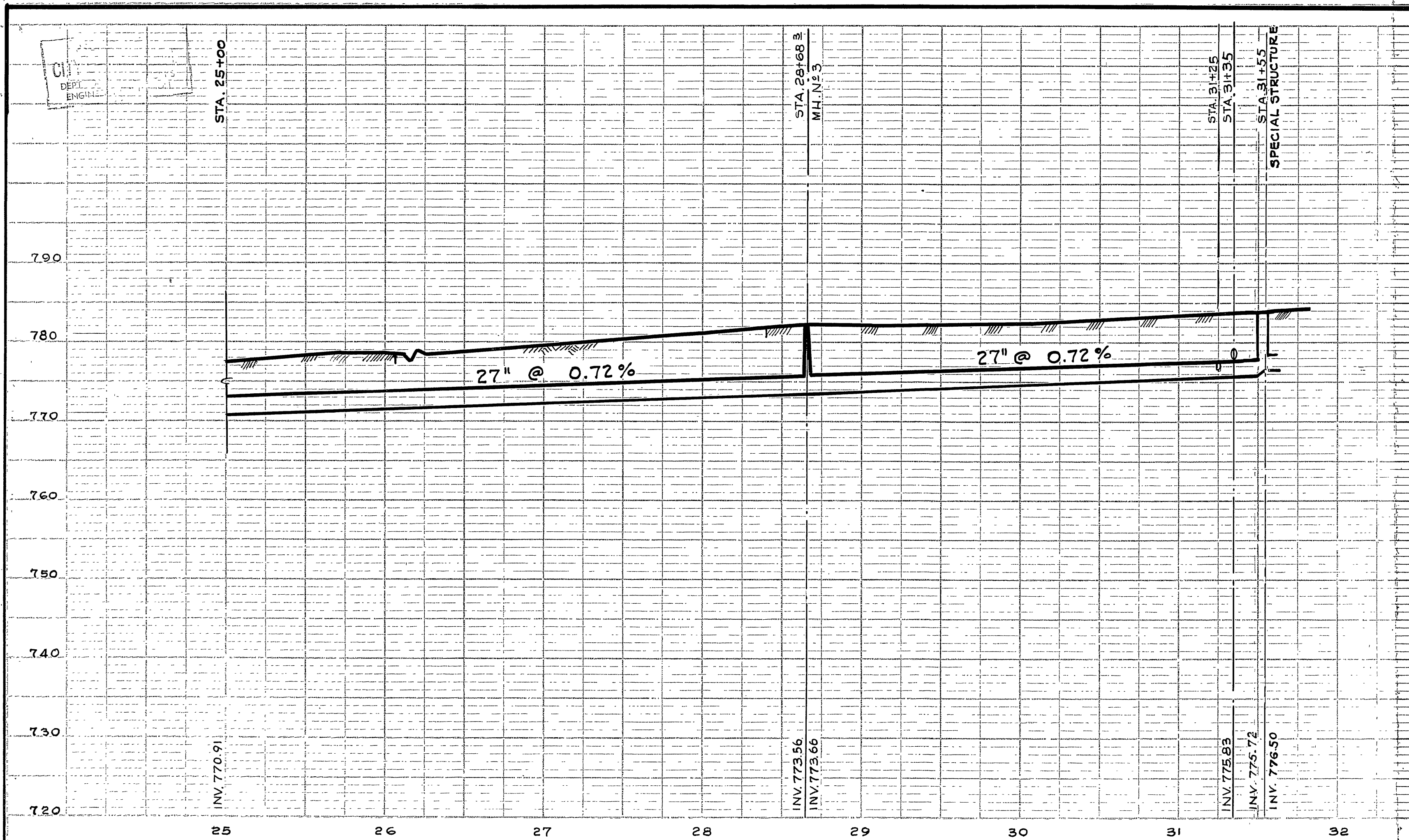
SCALE: 1" = 50' HORIZ.
1" = 10' VERT.

NOTE: LAY 6" V.C.P. AFTER NEW 27" V.C.P. IS COMPLETED AND OLD 15" LINE IS DEAD. CUT NEW CHANNEL IN BOTTOM OF EXIST. M.H. ALL WORK TO BE INCLUDED IN ITEM # 2

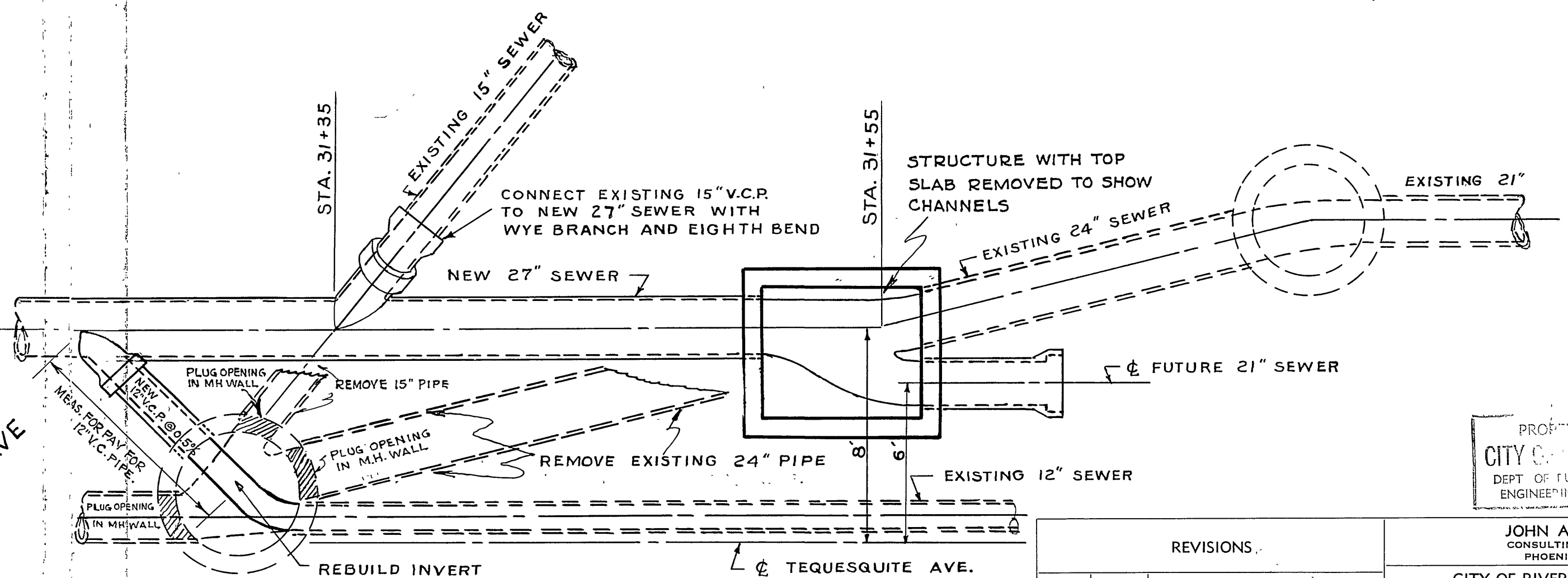
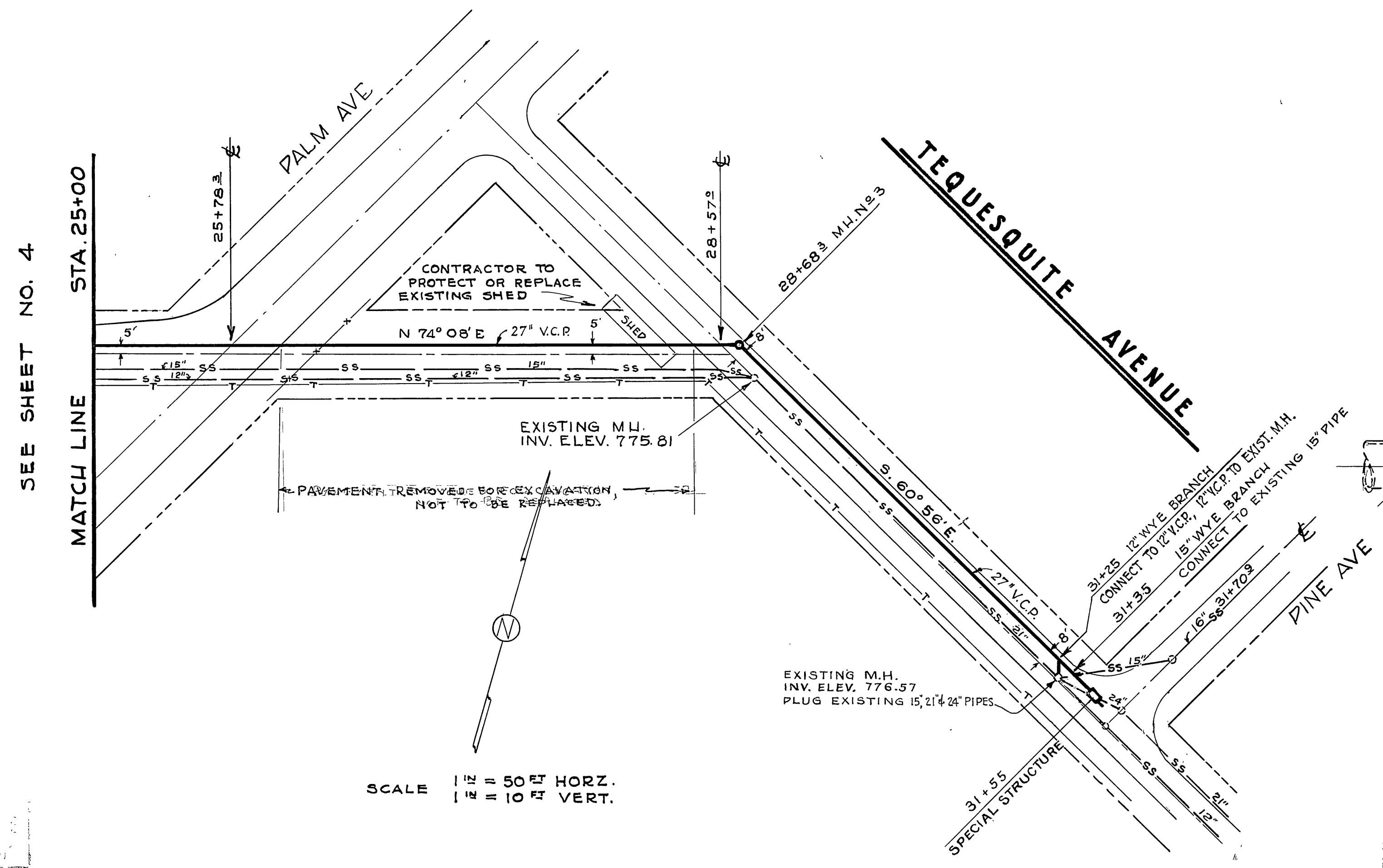
★ TIED IN, 10-31-58.

REVISIONS			JOHN A. CAROLLO CONSULTING ENGINEERS PHOENIX, ARIZONA CITY OF RIVERSIDE, CALIFORNIA DEPARTMENT OF PUBLIC WORKS.
MARK	DATE	DESCRIPTION	
★	5-20-59	As BUILT 4.8.58	TRUNK SEWER REHABILITATION SECOND STAGE VICTORIA TRUNK STA. 13+00 TO STA. 25+00
DESIGNED BY:	R.D.L.	CHECKED BY:	
DRAWN BY:	B.D.-G.C.W.	APPROVED BY:	<i>[Signature]</i>
RECOMMENDED BY:	<i>[Signature]</i>	DIRECTOR OF PUBLIC WORKS	
ASSISTANT CITY ENGINEER		DATE	7-3-58

S-126
SHEET 4 OF 8
4521-B-1096



NOTE: BID FOR STRUCTURE AT 31+55 SHALL INCLUDE M.H. FRAME, COVER & DUST PAN, M.H. STEPS, 21" V.C.P. STUB, FORMING CHANNEL, HANDLING SEWAGE FLOWS, ETC.
STRUCTURE STA. 31+55
 SCALE: 3/8" = 1'

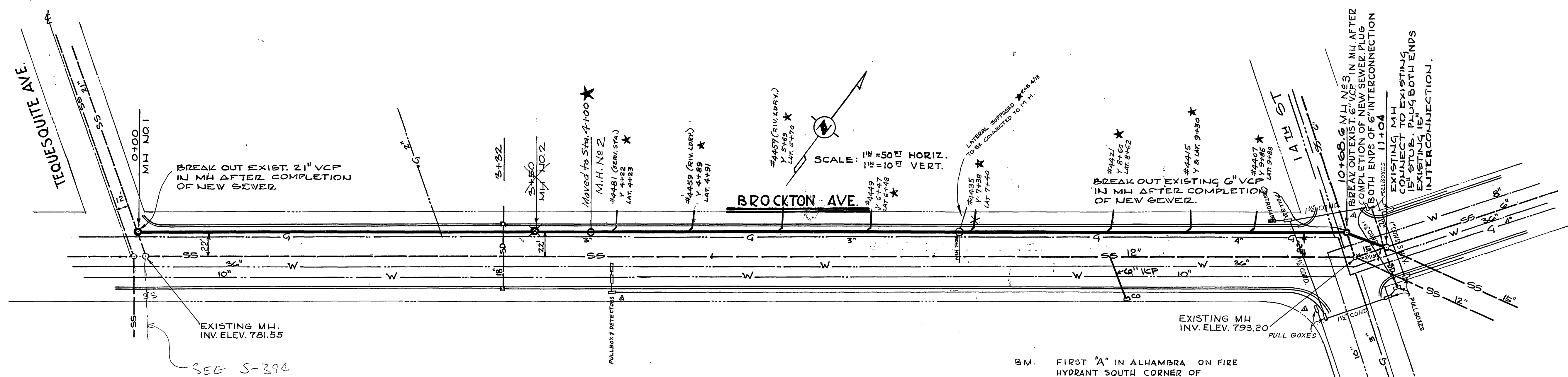


JUNCTION DETAIL
 STA. 31+35 & STA. 31+55
 SCALE: 1" = 4'

PROPERTY OF
CITY OF RIVERSIDE
 DEPT. OF PUBLIC WORKS
 ENGINEERING DIVISION

REVISIONS		
MARK	DATE	DESCRIPTION
5-20-59		AS BUILT H.B. 11

JOHN A. CAROLLO
 CONSULTING ENGINEERS
 PHOENIX, ARIZONA
 CITY OF RIVERSIDE, CALIFORNIA
 DEPARTMENT OF PUBLIC WORKS
TRUNK SEWER REHABILITATION
SECOND STAGE
VICTORIA TRUNK
 STA. 25+00 TO STA. 31+55
 DESIGNED BY R.D.L. CHECKED BY G.C.W. APPROVED BY *John A. Carollo*
 DRAWN BY B.D. - G.C.W. DIRECTOR OF PUBLIC WORKS
 RECOMMENDED BY *Thomas J. Lohler* ASSISTANT CITY ENGINEER DATE 7-3-58
S-126
 SHEET 5 OF 8



BREAK OUT EXIST. 21" VCP IN MH AFTER COMPLETION OF NEW SEWER.

EXISTING MH. INV. ELEV. 781.55

SEE S-394

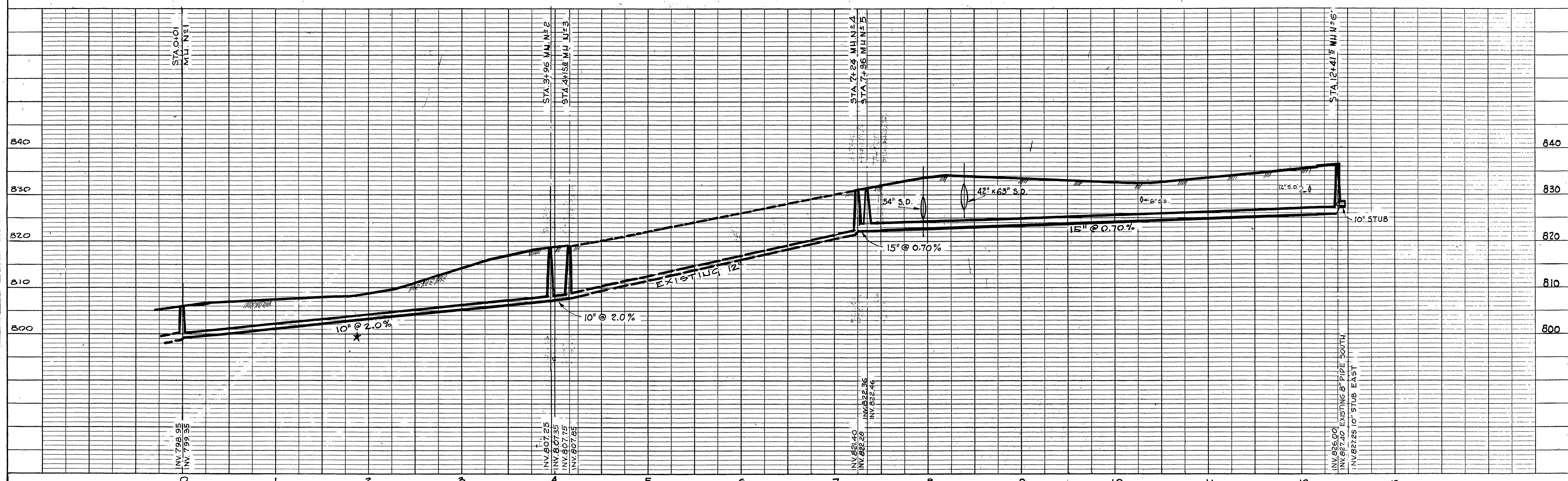
NOTE: INSTALL 6" WYE BRANCH AT ALL SERVICE SEWERS INTERCEPTED AND CONNECT SERVICE TO NEW SEWER

BREAK OUT EXISTING 6" VCP IN MH AFTER COMPLETION OF NEW SEWER.

EXISTING MH TO EXISTING 6" VCP. PLUG BOTH ENDS INTERCONNECTION.

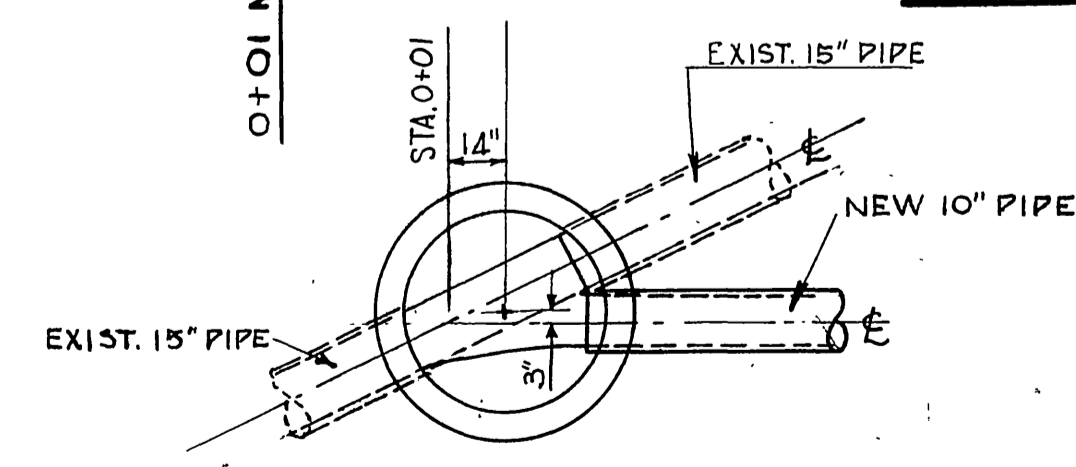
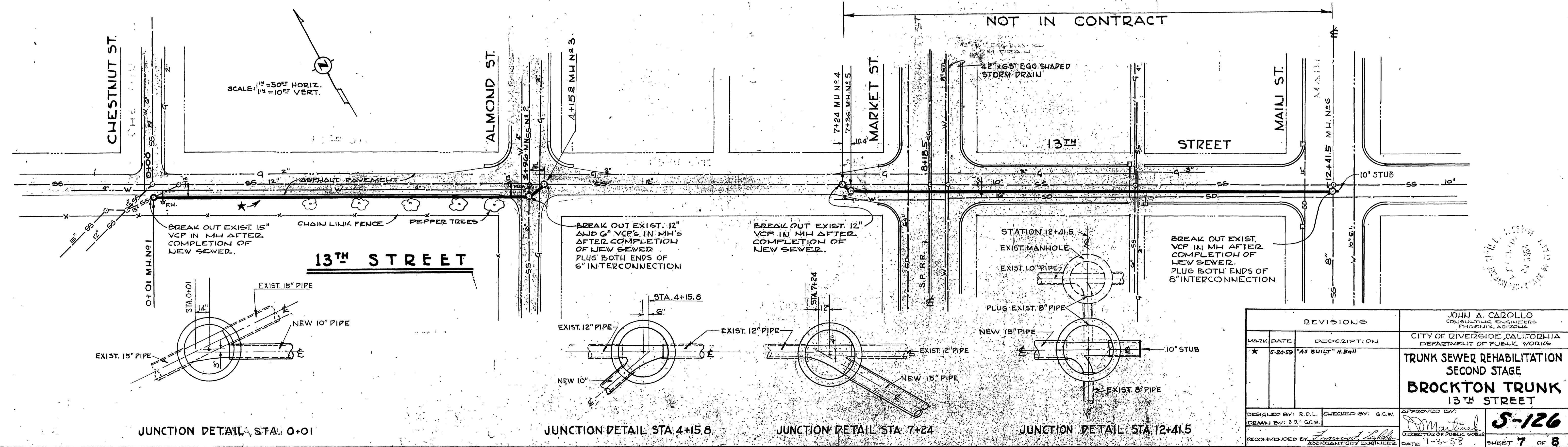
REVISIONS		JOHN A. CAROLLO CONSULTING ENGINEERS PASADENA, CALIFORNIA CITY OF RIVERSIDE, CALIFORNIA DEPARTMENT OF PUBLIC WORKS
MARK	DATE	
A	9/22/58	ADDED PULLBOXES & COND. BL.
*	5-20-59	"AS BUILT" H. 2411

DESIGNED BY: R.D.L.	CHECKED BY:	APPROVED BY:
DRAWN BY: S.D.-GCW		<i>[Signature]</i>
RECOMMENDED BY: <i>[Signature]</i>	DATE: 7-3-58	DIRECTOR OF PUBLIC WORKS

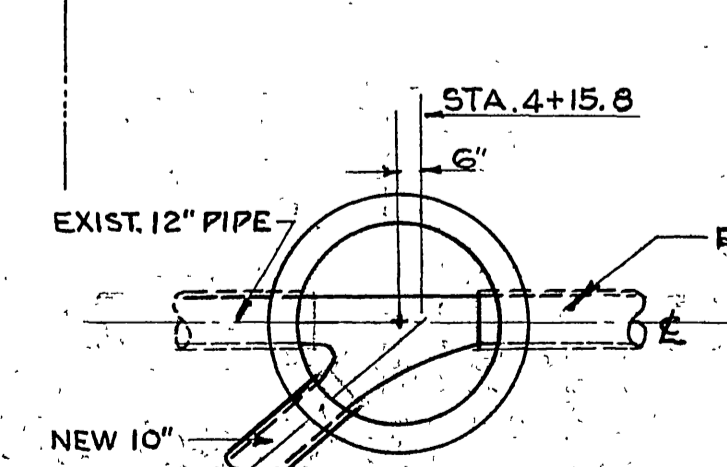


BM:
WEST SIDE OF C.I. RING - EXISTING MH.
13 FT. LT. STA. 0+28
ELEV. 806.85

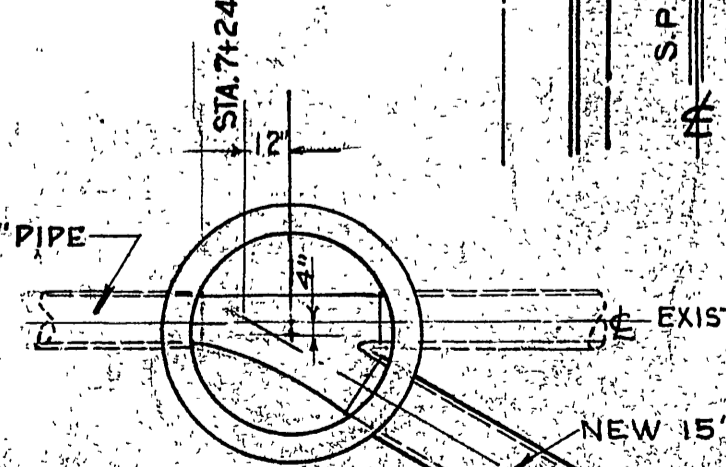
BM:
SW. COR. TOP OF CONC. CATCH BASIN
15 FT. RT. STA. 10+40
ELEV. 832.31



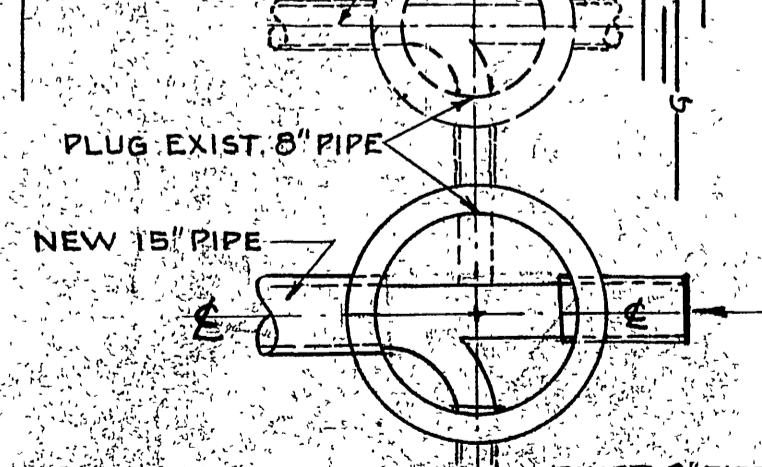
JUNCTION DETAIL STA. 0+01



JUNCTION DETAIL STA. 4+15.8



JUNCTION DETAIL STA. 7+24



JUNCTION DETAIL STA. 12+41.5

REVISIONS		
MARK	DATE	DESCRIPTION
*	5-20-59	"AS BUILT" N.B.G.

JOHN A. CAROLLO
CONSULTING ENGINEERS
PHOENIX, ARIZONA

CITY OF DIVERSIDE, CALIFORNIA
DEPARTMENT OF PUBLIC WORKS

**TRUNK SEWER REHABILITATION
SECOND STAGE
BROCKTON TRUNK
13TH STREET**

DESIGNED BY: R.D.L. CHECKED BY: G.C.W.
DRAWN BY: B.P.-G.C.W.

APPROVED BY: *[Signature]*
DIRECTOR OF PUBLIC WORKS

RECOMMENDED BY: *[Signature]*
ASSISTANT CITY ENGINEER

DATE: 7-3-58

S-126

SHEET 7 OF 8

