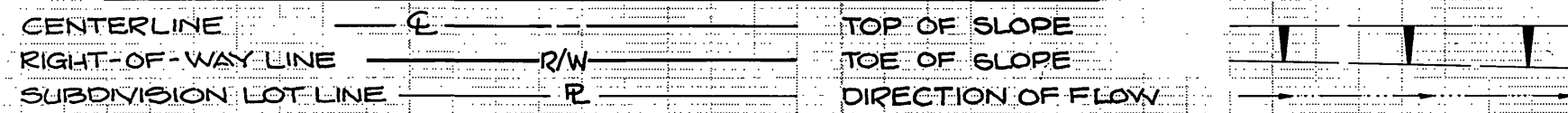


CONSTRUCTION LEGEND

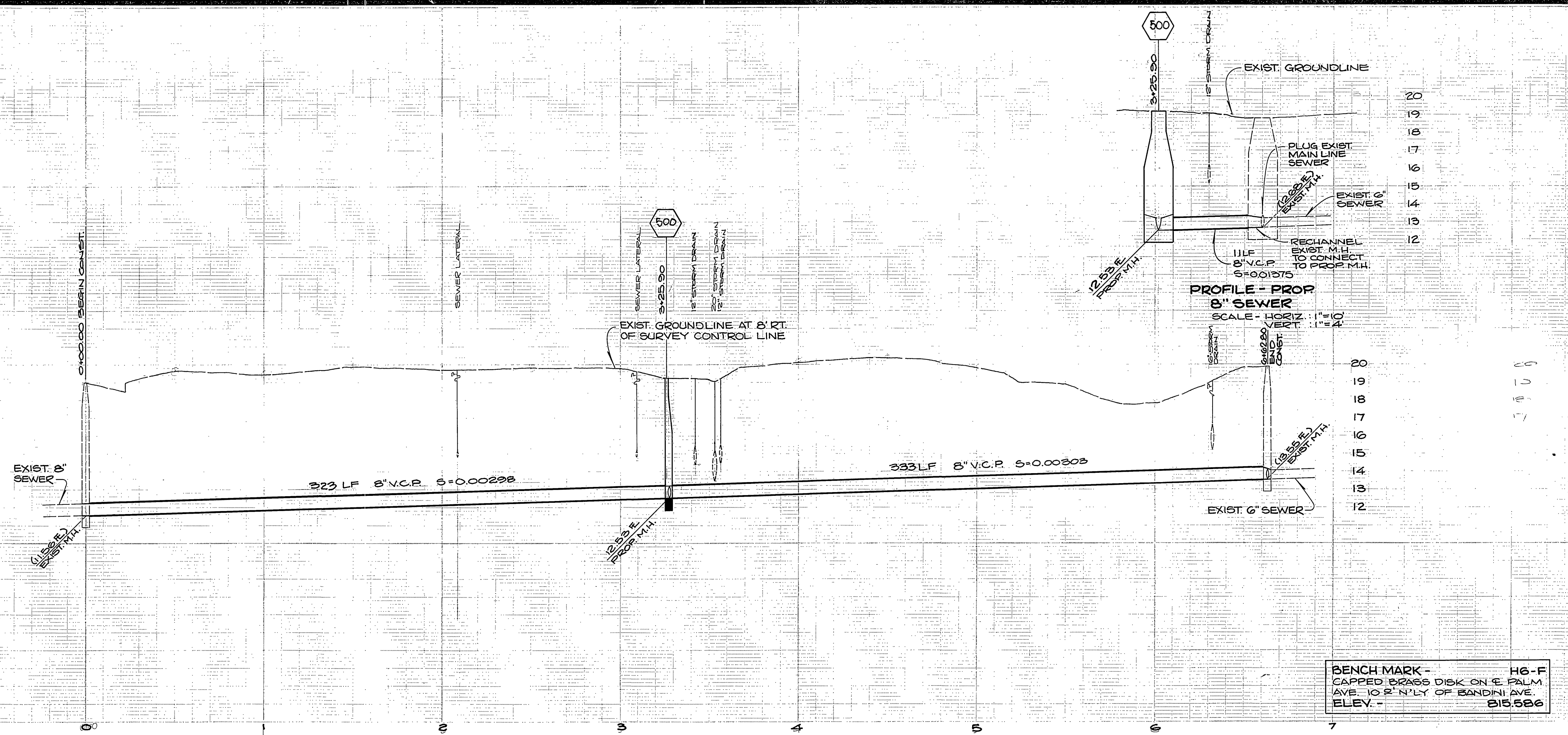


SPECIAL CONSTRUCTION NOTES

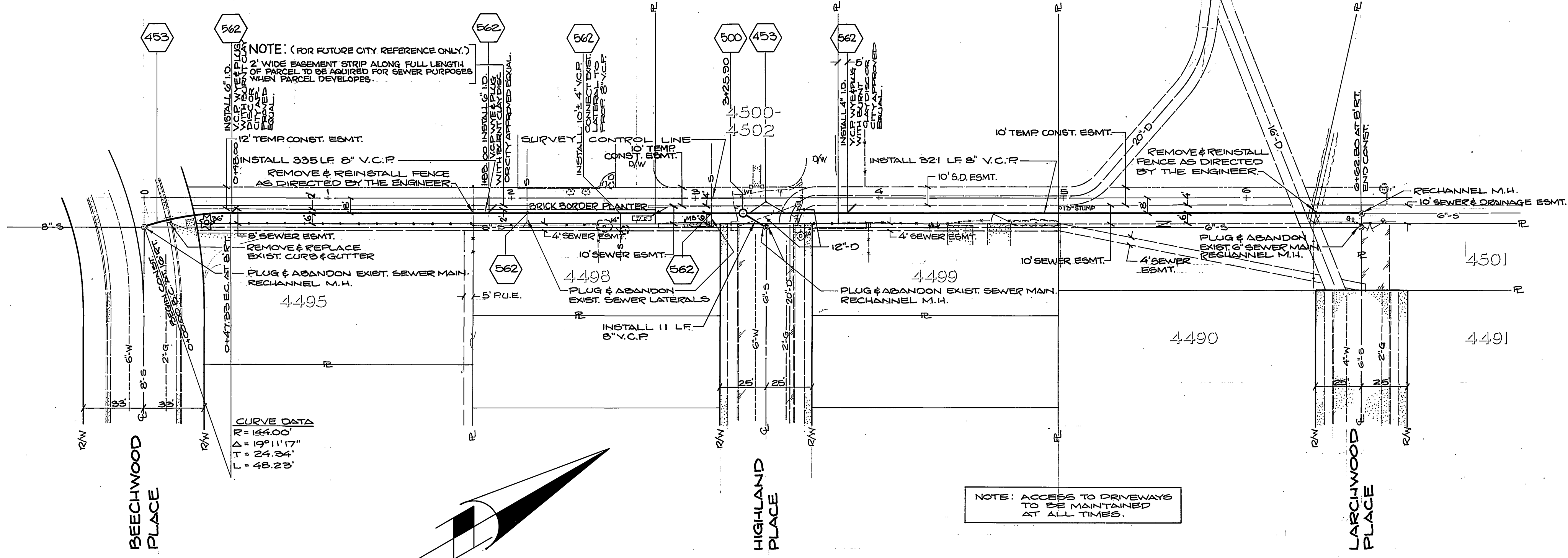
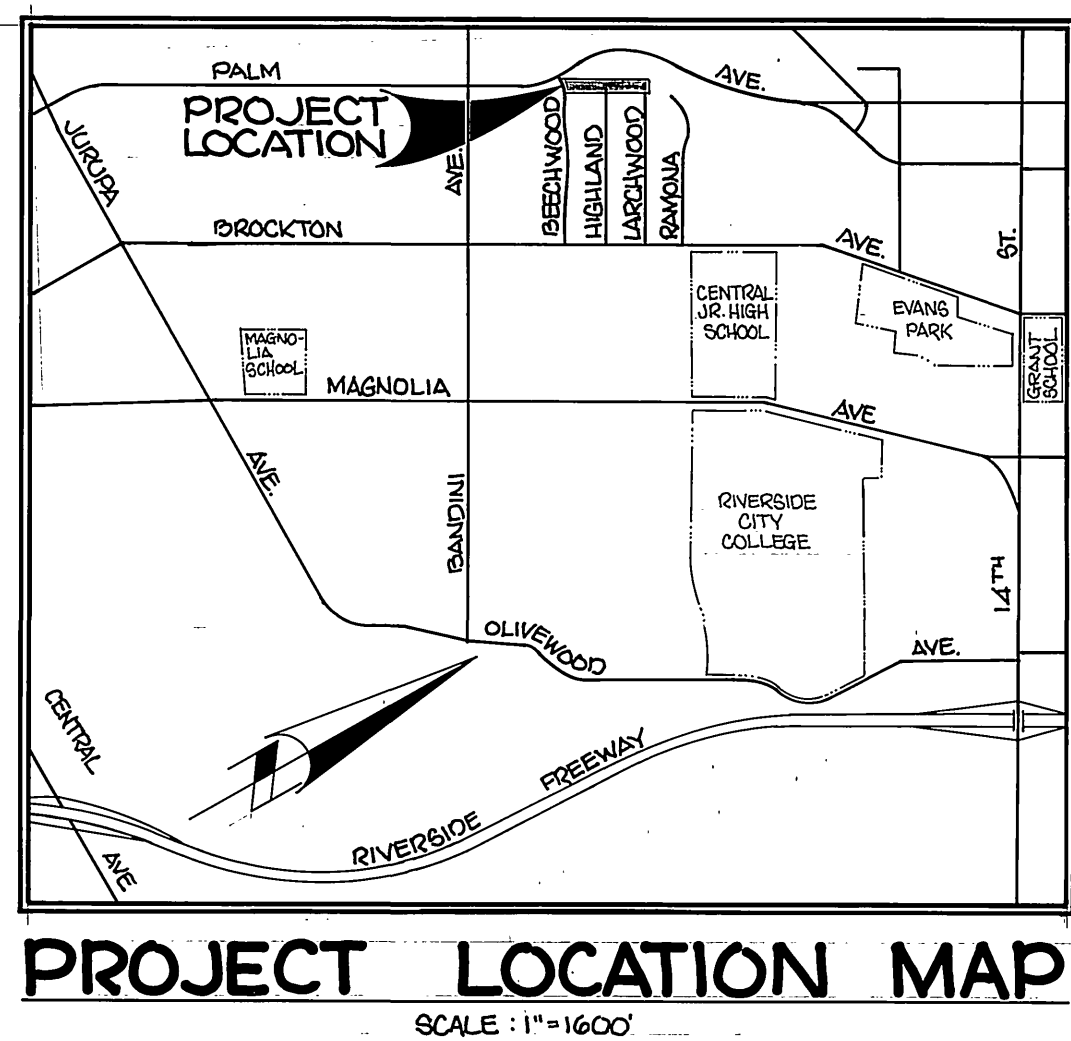
NUMBERS ABOVE 100 IN A HEXAGON ON THE PLAN REFER TO THE RESPECTIVE STANDARD DRAWING AND SHALL BE CONSTRUCTED ACCORDINGLY, UNLESS MODIFICATIONS ARE NOTED ON THE PLAN OR IN THE NOTES BELOW. ANY NUMBER SHOWN BELOW THE STANDARD DRAWING NUMBER INDICATES THE SPECIFIC ALTERNATE TO BE CONSTRUCTED.

GENERAL CONSTRUCTION NOTES

- EXISTING UTILITIES SHOWN ON THIS PLAN, ARE PLOTTED FROM UTILITY RECORDS. THE CONTRACTOR IS REQUIRED TO TAKE DUE PRECAUTIONARY MEASURES TO LOCATE AND PROTECT ALL UTILITIES WHETHER OR NOT SHOWN ON THIS PLAN. IF THE COVER OF A UTILITY IS KNOWN IT IS SHOWN IN THE PROFILE. UTILITIES SHOWN IN THE PROFILE AS ---^2 INDICATES THAT THE COVER IS UNKNOWN, BUT THE UTILITY IS NOT EXPECTED TO CONFLICT WITH THE PROPOSED IMPROVEMENTS.
- RIGHTS OF ENTRY HAVE BEEN OBTAINED FOR WORK SHOWN ON PRIVATE PROPERTY.
- ALL ELEVATIONS SHOWN ON THE PLAN SHALL BE STAKED IN THE FIELD.
- LOCATIONS OF SEWER LATERALS SHOWN ON THE PLAN ARE APPROXIMATE. SEWER LATERALS SHALL BE LOCATED IN THE FIELD BY THE CONTRACTOR AT THE TIME OF CONSTRUCTION.



BENCH MARK - H6-F
 CAPPED BRASS DISK ON E PALM AVE
 10 S N'LY OF BANDINI AVE.
 ELEV. - 815.526



CITY OF RIVERSIDE PUBLIC WORKS DEPARTMENT		PALM AVE. SEWER BEECHWOOD TO LARCHWOOD		INDEXED LF ACCOUNT NO. 32-577-546
APPROVED BY PRINCIPAL ENGINEER <i>[Signature]</i>		APPROVED BY PUBLIC WORKS DIRECTOR <i>[Signature]</i>		S-1278 SHEET 1 OF 1
DESIGNED BY <i>BIM</i>		DATE JUNE 28, 1982		