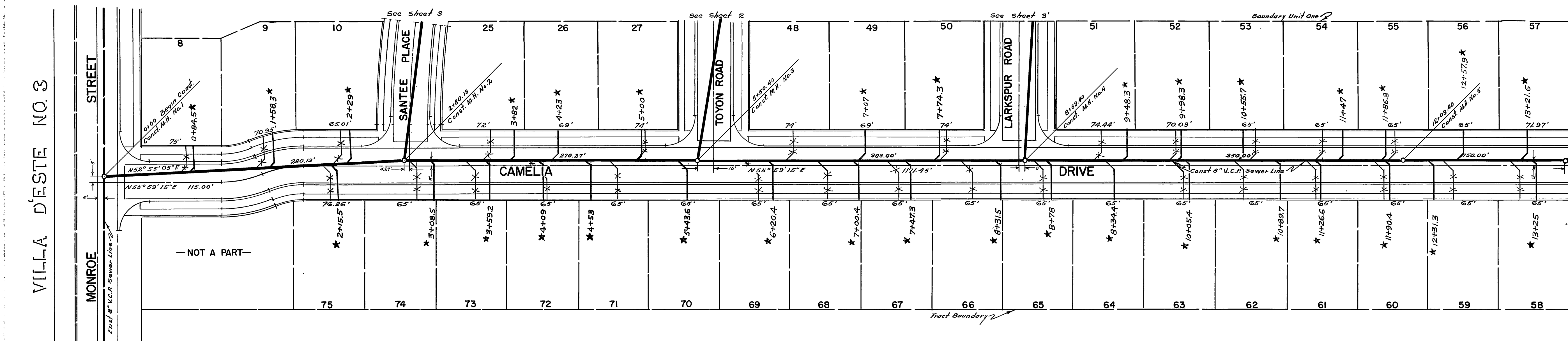


B.M. = PK. Nail in West Curb at Colorado & Monroe 2' North of Curb Return ELEV. = 750.39

NOTE:
Exact Location of House Connections to be Determined in the Field



No. Std. Drop Manholes.....1
 No. Std. Manholes.....9
 No. Std. Cleanouts.....1
 Lineal ft. 8" V.C.P.2250.06'
 No. House Connections.....75

RIVERSIDE ENGINEERING CO. INC.
 RIVERSIDE, CALIFORNIA
 APPROVED BY *George O. Crowley* R.E. 2455 DATE June 10, 1959
CITY OF RIVERSIDE, CALIFORNIA
 DEPARTMENT OF PUBLIC WORKS

— CAMELIA DRIVE —
 SEWER PLAN & PROFILE
 HALECREST HOMES UNIT I
 1" = 50' HORZ 1" = 5' VERT
 APPROVED BY *Francis A. Zofaber*
 NO. **S-129**
 DATE 31 July 1959 SHEET 1 OF 3

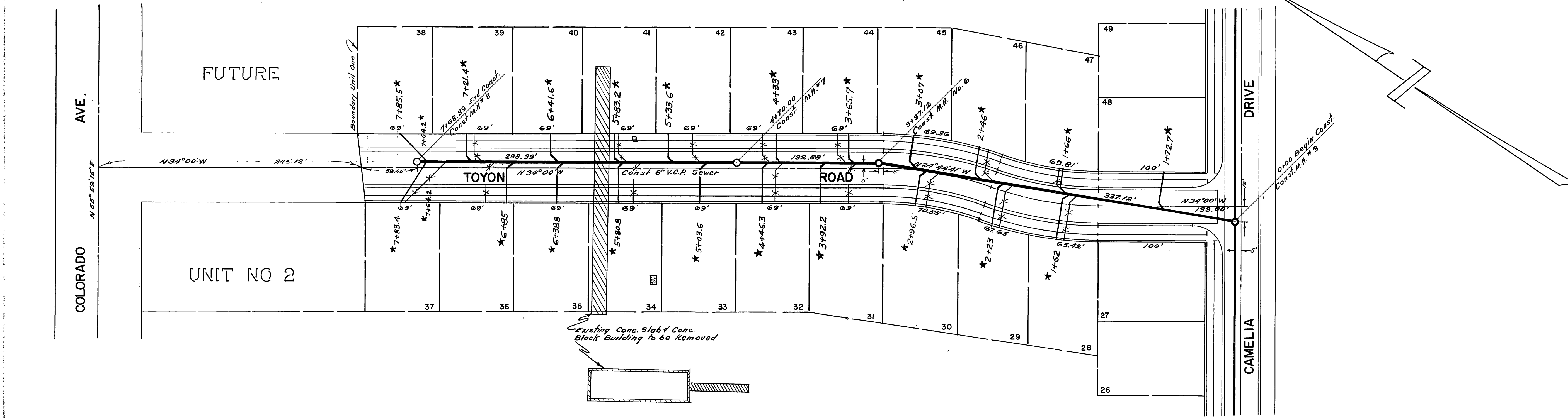
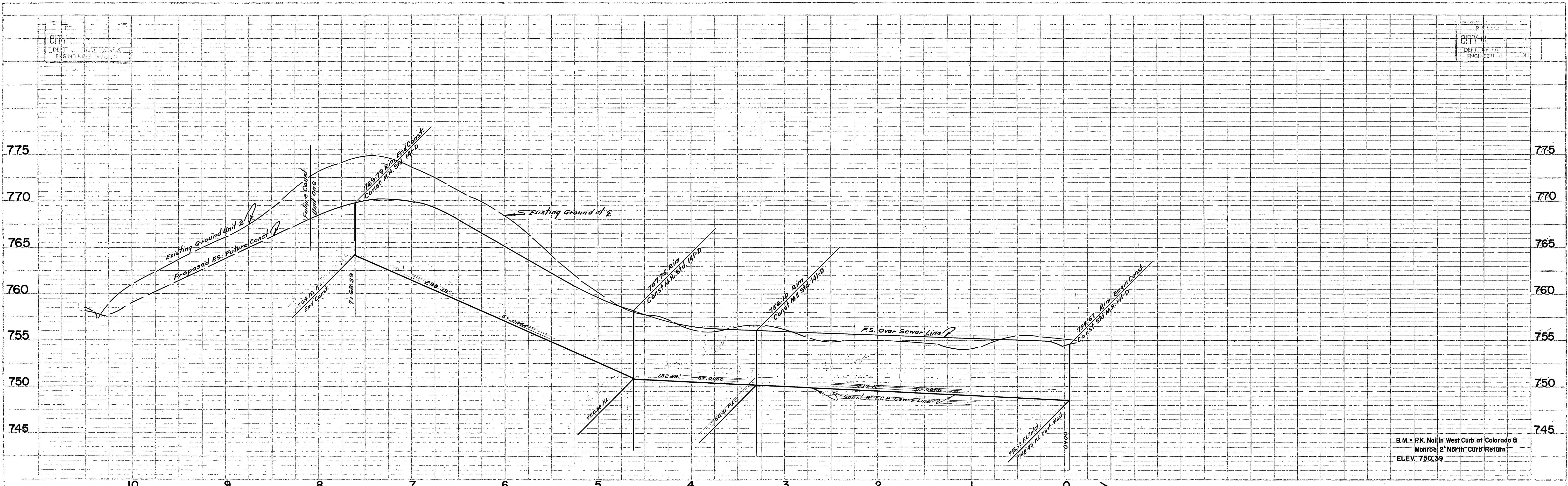
* = "As Built" sewer laterals, 2-19-59, H. Ball

PROFILE SHEET
 PROJECT: HAILECREST HOMES
 SHEET NO. 1 OF 3
 DATE: 31 July 1959

PLAN SHEET
 PROJECT: HAILECREST HOMES
 SHEET NO. 1 OF 3
 DATE: 31 July 1959

CITY OF RIVERSIDE
 DEPT. OF PUBLIC WORKS
 ENGINEERING DIVISION

CITY OF RIVERSIDE
 DEPT. OF PUBLIC WORKS
 ENGINEERING DIVISION



NOTE:
Exact Location of House Connections to be Determined in the Field.

RIVERSIDE ENGINEERING CO. INC.
 APPROVED BY *George O. Crawley* R.E. PASS. DATE *6/10/58*
CITY OF RIVERSIDE, CALIFORNIA
DEPARTMENT OF PUBLIC WORKS

TOYON ROAD
 — SEWER PLAN & PROFILE —
 HALECREST HOMES UNIT I

1"=50' HORZ 1"=5' VERT

APPROVED BY *Francis L. Leffler* NO. **S-129**
 DATE *31 July 1958* SHEET **2** OF **3**

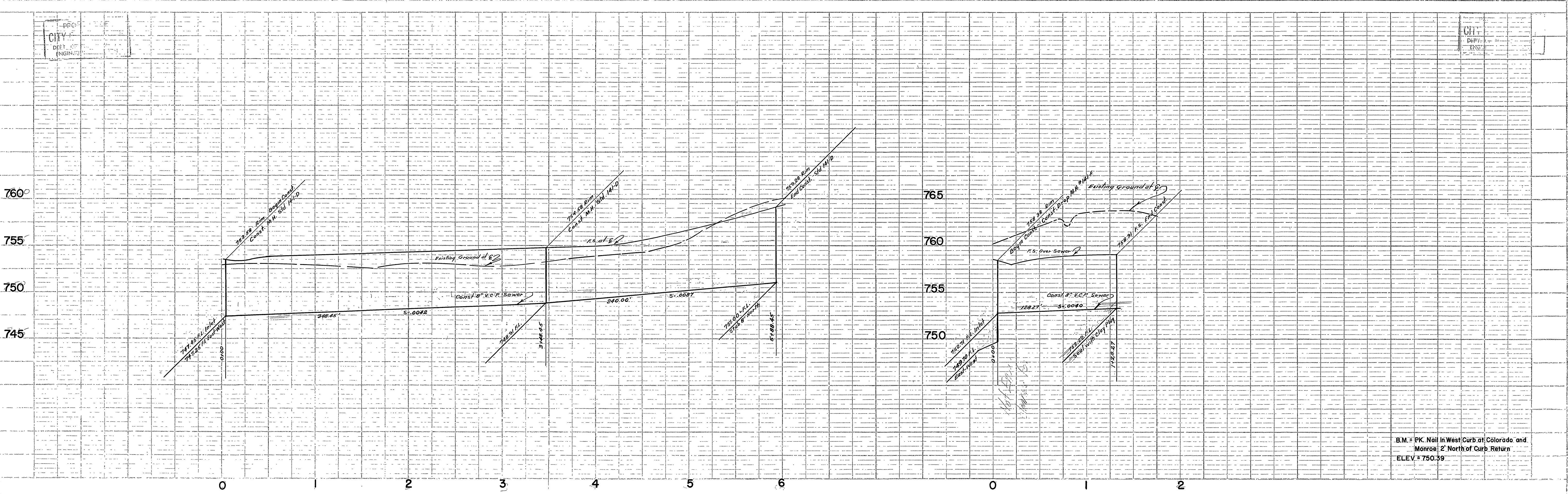
★ = "As Built" sewer laterals, 2-19-59, H.Ball

J.O. 2125, FB. 53

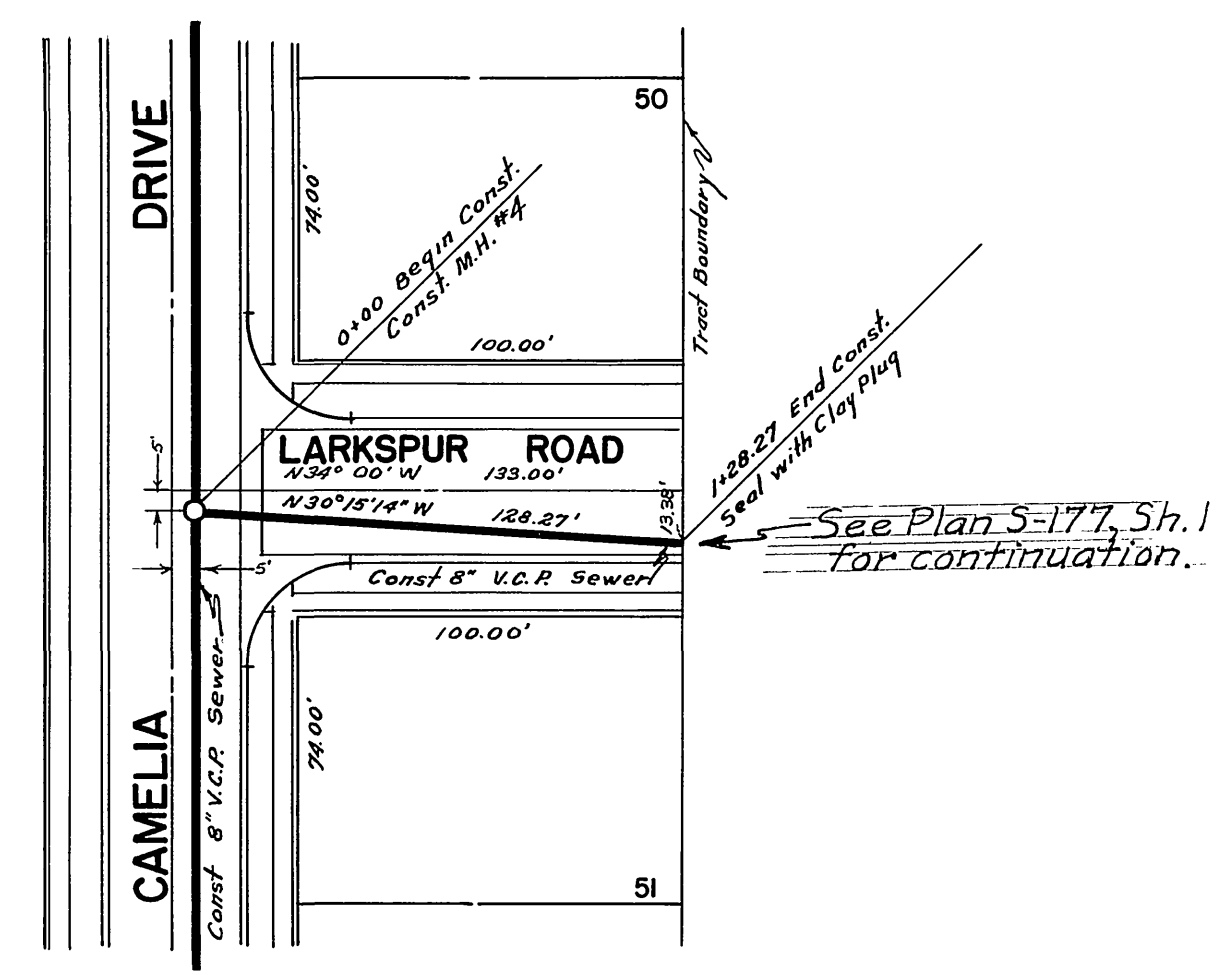
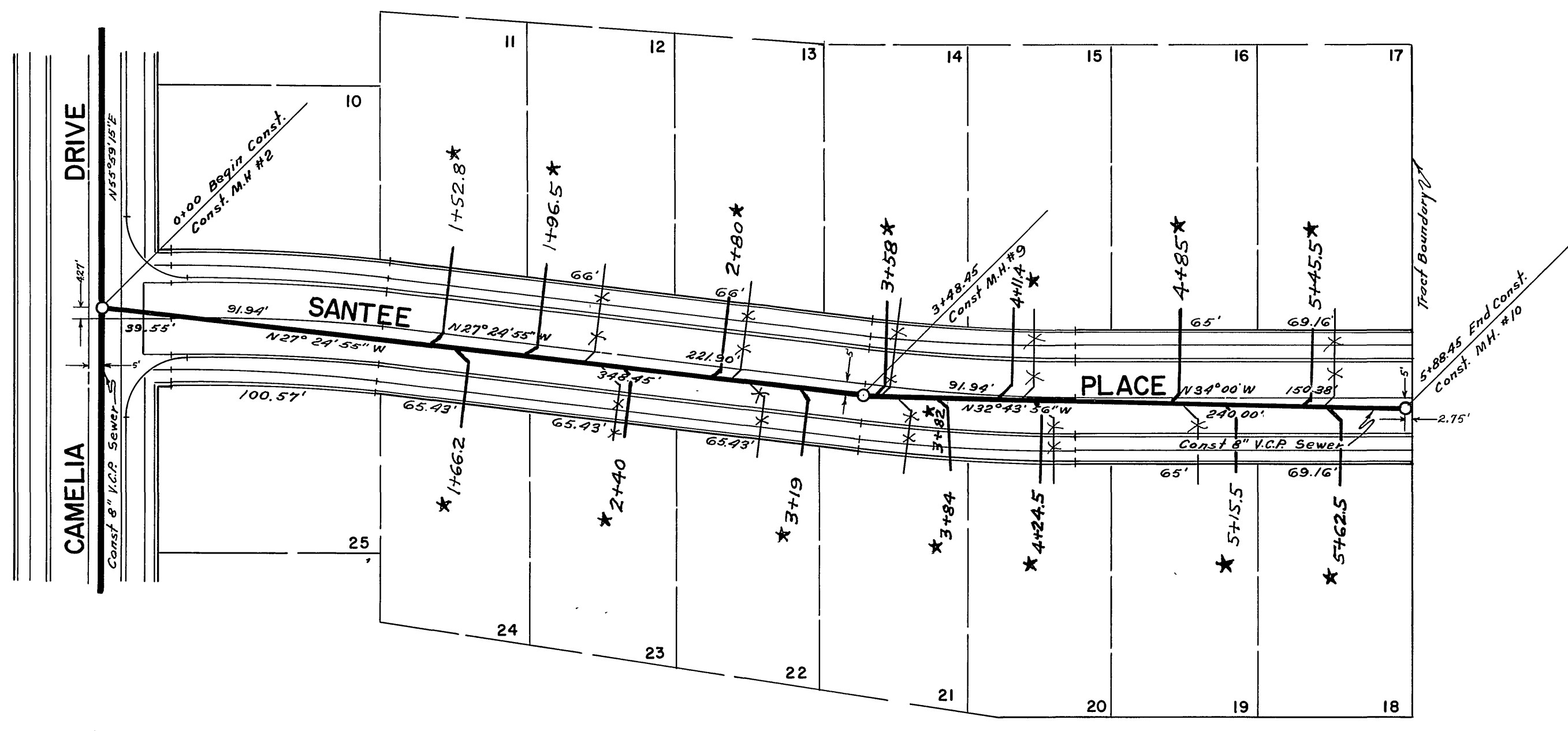
PROJECT	HALECREST HOMES UNIT I
DATE	7/31/58
BY	FRANCIS L. LEFFLER
CHECKED	GEORGE O. CRAWLEY
IN CHARGE	FRANCIS L. LEFFLER
APPROVED	GEORGE O. CRAWLEY
ENGINEER	FRANCIS L. LEFFLER

PROJECT	HALECREST HOMES UNIT I
DATE	7/31/58
BY	FRANCIS L. LEFFLER
CHECKED	GEORGE O. CRAWLEY
IN CHARGE	FRANCIS L. LEFFLER
APPROVED	GEORGE O. CRAWLEY
ENGINEER	FRANCIS L. LEFFLER

CITY OF RIVERSIDE
 DEPT. OF PUBLIC WORKS
 ENGINEERING



B.M. = P.K. Nail in West Curb at Colorado and Monroe 2' North of Curb Return
ELEV = 750.39



NOTE:
EXACT LOCATION OF HOUSE CONNECTIONS TO BE DETERMINED IN THE FIELD.

RIVERSIDE ENGINEERING CO. INC.

APPROVED BY *George A. Hawley* REVISION DATE 6-10-58

CITY OF RIVERSIDE, CALIFORNIA
DEPARTMENT OF PUBLIC WORKS

UNIT I
HALECREST HOMES
SANTEE PLACE - LARKSPUR ROAD
SEWER PLAN &
PROFILE

1" = 50' HORZ 1" = 5' VERT.

APPROVED BY *Francis S. Tolpin* NO. **S-129**

DATE *31 July 1958* SHEET 3 OF 3

* = 'As Built' sewer laterals, 2-19-59, H.B. 11

PROFILE	SHEET NO.	DATE
NO. 1	3	

PLAN	SHEET NO.	DATE
NO. 1	3	